

User Manual

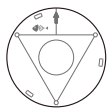
Integrated Antenna Ceiling Access Point

ASC175

Package Contents



Access Point
1PC



Alignment Sticker
1PC



Mounting Bracket
1PC



Quick Installation
Guide
1PC



Butterfly Nut
3PCS



Machine Screw
(Use with Butterfly Nut)
3PCS

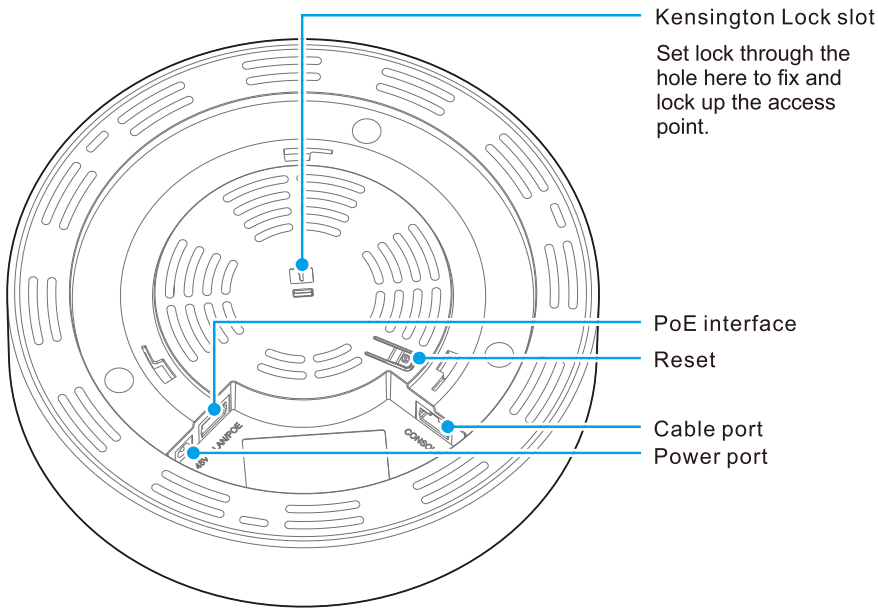


Expansion Plug
3PCS



Tapping Screw
(Use with Expansion
Plug) 3PCS

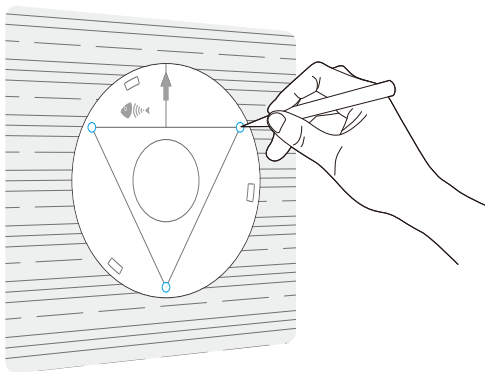
Product Overview



LED	Color	Status	Description
SYS	Blue/ Red	Blue	Initializing
		Steady blue with occasional flashing	Working properly
		Red	Equipment failure

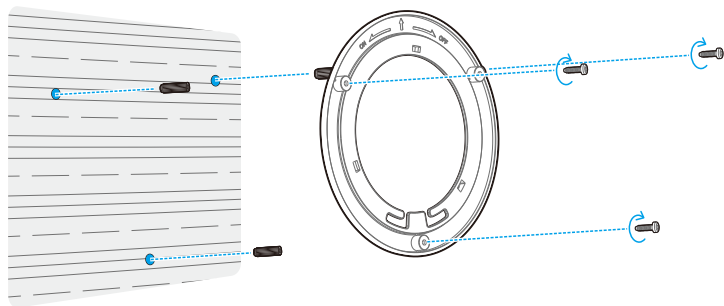
Installation Method:

- 1 Locate mounting holes: position the alignment sticker at the desired location on the wall, mark the positions of screws then drill the pilot holes.

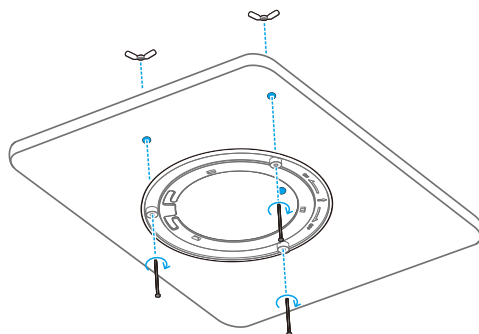


- 2 Fix the mounting bracket.

Solid wall: insert the expansion screws into the pilot holes to fix the mounting bracket.

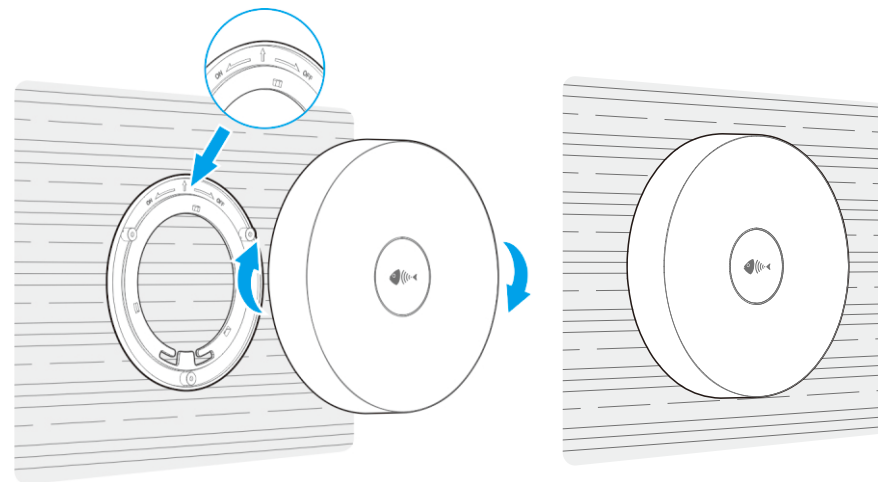


Movable wall:
use the butterfly screws to fix the mounting bracket.

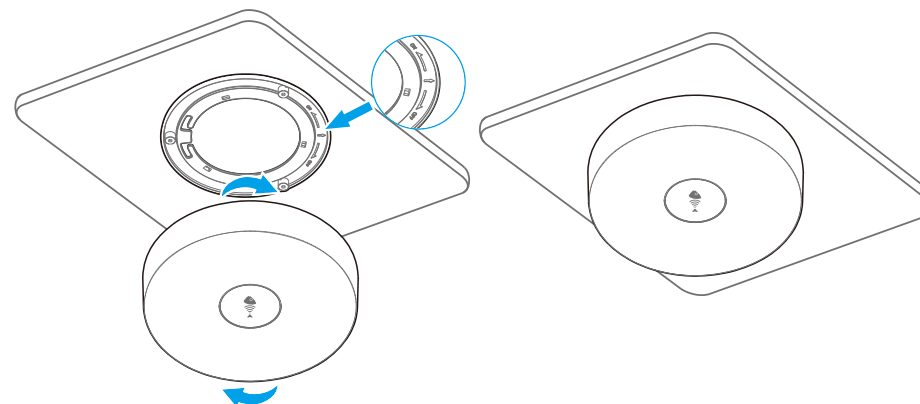


- 3 Install the access point: connect the cable to the Ethernet port and align the AP with the arrow on the mounting bracket. Turn the AP clockwise until it locks into place.

Solid wall installation sketch map:



Movable wall installation sketch map:



Setup Guide

1.AP Operation Mode Description:

Thin mode (coordinated mode)

Fat mode (standalone mode)

Thin mode as a default is under direct management of AXILSPOT hardware controller.

If there's a need to be used alone, or, with Access Manager, the operation mode should be switched to Fat.

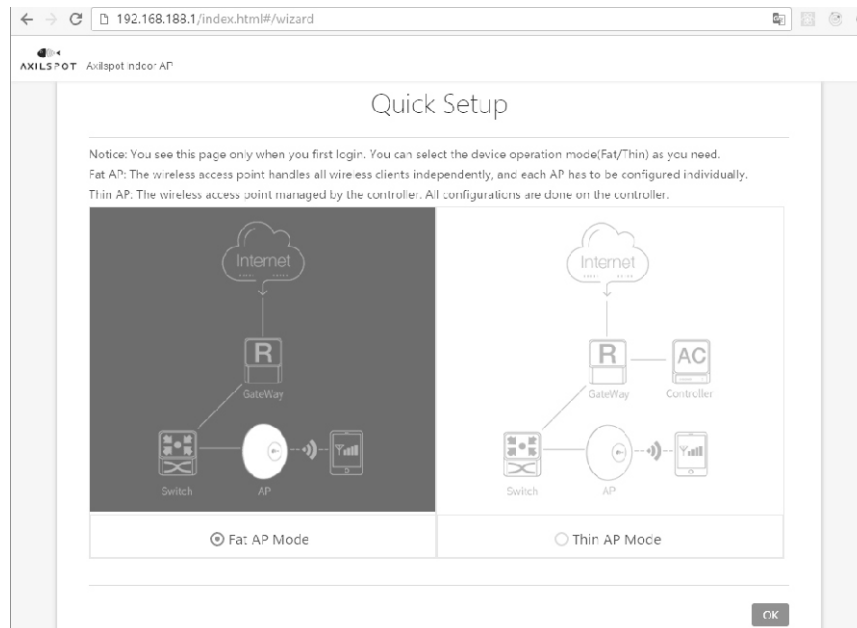
2.About Factory Default Settings:

Thin mode is default, and the IP address is automatically assigned by controller; to switch to Fat mode, please login 192.168.188.1; default login password: admin.

3.Switch Instruction:

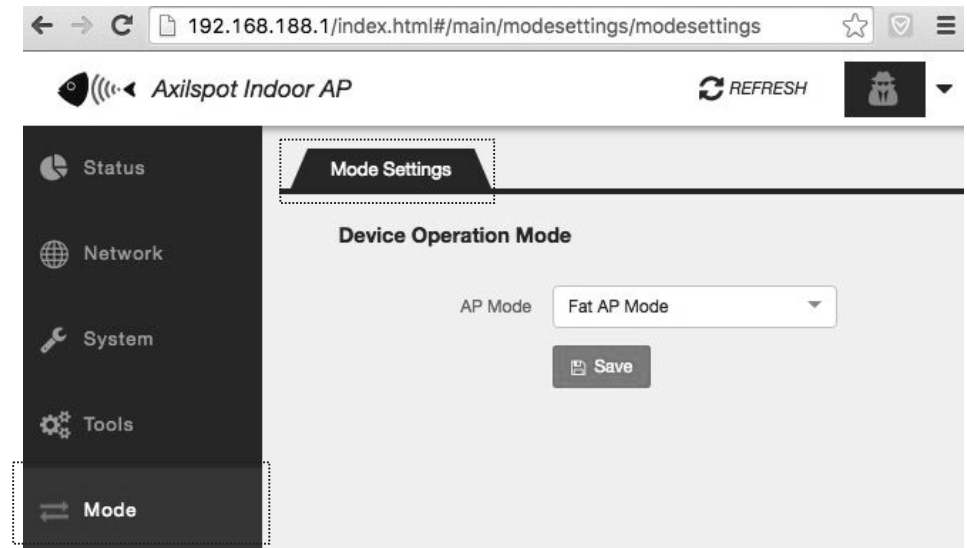
3.1 To switch single AP's operation mode, please connect PC and LAN port, and set 192.168.188.x as PC's IP address, then login 192.168.188.1 on browser.

Operation Mode Switch at Quick Setup:



Switch at First Login

Or switch at Mode Settings of AP Web Interface :

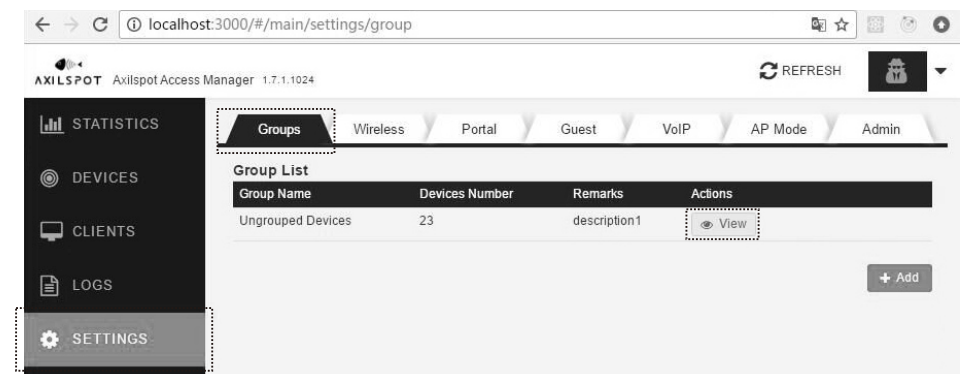


Fat Mode Switch in Web Interface

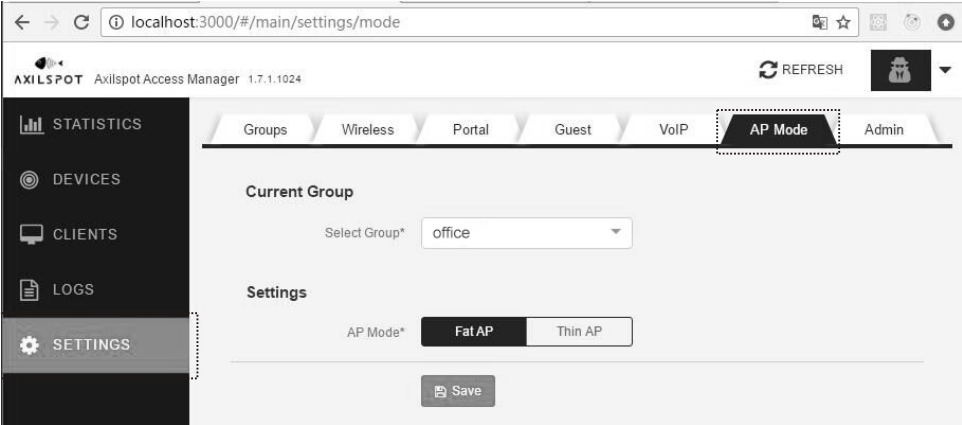
3.2 To switch in bulk, please operate on Access Manager.

Note: ONLY when Access Manager and APs are both in layer 2 can APs be found and managed by Access Manager.

1) Click Groups to check AP group list.



2) Set AP mode and save.



3) Effectuated after restart.

Hardware Specs	
Network interface	1*10/100/1000Mbps
Console	1
Power supply	PoE or local power supply
PoE	IEEE 802.3at
Local power supply	48V DC
Weight	≤400g
Indicator	1*SYS Light, 2 Color Display
Antenna	2.4G:3 dBi 5.8G:3 dBi
Dimensions	Φ195mm*41mm
Reset	Supported
Mounting	Ceiling/Wall Mount
Protection grade	IP 41
Anti-theft design	Supported
Power consumption	≤17W
Environmental conditions	Operating temperature:-10°C ~ 55°C (-14°F ~ 131°F) Storage temperature:- 40°C ~ 70°C (-40°F ~ 158°F) Operating humidity: 5% ~ 95% non-condensing Storage humidity: 5% ~ 95% non-condensing

RF Parameters	
Wi-Fi standards	IEEE 802.11a/b/g/n/ac
Frequency	(Subject to local regulations limits) 2.400 - 2.4835 Ghz 5.150 - 5.250 Ghz 5.725 - 5.850 GHz
Spatial streams	3
Support channels	802.11a,802.11n,802.11ac(802.11a compliant): 9 channels 802.11b, 802.11g, 802.11n(802.11b/g compliant): 11 channels
RF technology	OFDM : BPSK@6/9Mbps, QPSK@12/18Mbps、 16-QAM@24Mbps、64-QAM@48/54Mbps DSSS : DBPSK@1Mbps、DQPSK@2Mbps、CCK@5.5/11Mbps MIMO-OFDM (11n) : MCS 0-23 MIMO-OFDM (11ac) : MCS 0-9
Modulation type	11b:DSS:CCK@5.5/11Mbps,DQPSK@2Mbps, DBPSK@1Mbps 11a/g:OFDM:64QAM@48/54Mbps,16QAM@24Mbps, QPSK @12/18Mbps,BPSK@6/9Mbps 11n:MIMO-OFDM:BPSK,QPSK,16QAM,64QAM 11ac:MIMO-OFDM:BPSK,QPSK,16QAM,64QAM, 256QAM
Modulation type	20/40/80 MHz
Max. TX Rate of single frequency	2.4GHz:450Mbps; 5GHz:1300Mbps;
TX power(subject to local regulations limit)	≤26dBm
Adjustable power range	1dBm~ (Subject to local regulations limit)
Automatic/Manual channel adjustment	Supported
Automatic/Manual power adjustment	Supported
RF switch	Support custom auto on/off, or manually turn on/off wireless signal

Introduction:

Thanks for choosing Axilspot Dorado Access Point product. The Quick Installation Guide is designed to guide you through installation and includes warranty terms. For more information please visit Axilspot website: <http://www.axilspot.com>

Statement:

©2016 Axilspot Communication Co., Ltd. All rights reserved.

No unit or individual shall extract or copy the contents of this guide or disseminate in any form without the company's written permission.

“AXILSPOT” is registered trademark of Axilspot Communication Co., Ltd.

Unless otherwise agreed, this manual is used only as a guide, all statements in this manual, information and recommendations do not constitute any express or implied warranty.

Contents of this manual are subject to change without prior notice.

Product Warranty

Thank you for purchasing AXILSPOT products. In order to protect your rights, please read the following terms.

- Axilspot warrants that starting from the date of shipment by Axilspot to the original purchaser ("customer"), the purchase price includes a one-year limited warranty for the hardware components.
- If we determine that the hardware components of a Product do not conform to this Product Warranty during the applicable warranty period we will, at our option, repair or replace the Product, or refund the original purchase price of the Product.
- Any repaired or replacement products will be warranted for the remainder of the original Warranty Period or Ninety (90) days after receipt of the repaired or replacement product(s), whichever is longer. If the hardware product is purchased from an Axilspot reseller, the reseller will handle and be responsible for the warranty return process for its end users.
- If the hardware product was purchased directly from Axilspot, the end user will be responsible for the warranty return process.
- This warranty is provided only to the original end user, and is not transferrable. The warranty ends upon transfer of the hardware product to a new owner.

Warranty Exclusions

This product warranty will not apply if the hardware has been:

- Altered or disassembled by anyone other than us or as authorized by us.
- Subjected to abnormal physical or electrical stress or misuse.
- Rebranded, painted for physically modified.
- Improperly installed or not used according to product operation instruction.
- Damaged by using third party firmware.
- Not received by us within 30 days of insurance of the RMA.

RMA and Software Upgrade Service

Please log on Axilspot website <http://www.axilspot.com> for detailed RMA process, product information and download the latest software.

Special Announcement

This service commitment applies to Axilspot products sold out of mainland China. After-sales service provisions agreed separately shall be subject to contract.

Note: Axilspot company interpretation and amendments shall prevail within the limits of national laws and regulations.



CE Mark Warning

This is a Class B Product. In a domestic environment, this product may cause radio interference, in which case the user may be required to take adequate measures. This device complies with EU 1999/5/EC.

NOTE:

- (1) The manufacturer is not responsible for any radio or TV interference caused by unauthorized modifications to this equipment.
- (2) To avoid unnecessary radio interference, it is recommended to use a shielded RJ45 cable.



Federal Communication Commission Interference Statement

This equipment has been tested and found to comply with the limits for a Class B digital device, pursuant to Part 15 of the FCC Rules. These limits are designed to provide reasonable protection against harmful interference in a residential installation. This equipment generates, uses and can radiate radio frequency energy and, if not installed and used in accordance with the instructions, may cause harmful interference to radio communications. However, there is no guarantee that interference will not occur in a particular installation. If this equipment does cause harmful interference to radio or television reception, which can be determined by turning the equipment off and on, the user is encouraged to try to correct the interference by one of the following measures:

- Reorient or relocate the receiving antenna.
- Increase the separation between the equipment and receiver.
- Connect the equipment into an outlet on a circuit different from that to which the receiver is connected.
- Consult the dealer or an experienced radio/TV technician for help.

FCC Caution: Any changes or modifications not expressly approved by the party responsible for compliance could void the user's authority to operate this equipment.

This device complies with Part 15 of the FCC Rules. Operation is subject to the following two conditions: (1) This device may not cause harmful interference, and (2) this device must accept any interference received, including interference that may cause undesired operation.

This device and its antenna(s) must not be co-located or operating in conjunction with any other antenna or transmitter.

IMPORTANT NOTE:

FCC Radiation Exposure Statement:

This equipment complies with FCC radiation exposure limits set forth for an uncontrolled environment. This equipment should be installed and operated with minimum distance 20cm between the radiator & your body.

5GHz

5150-5250MHz band is restricted to indoor operations only.

Axilspot Communication Co., Ltd.

A302 Han's Innovation Building, No.9018 Beihuan Ave., Nanshan District, Shenzhen, China, 518000

support@axilspot.com

www.axilspot.com