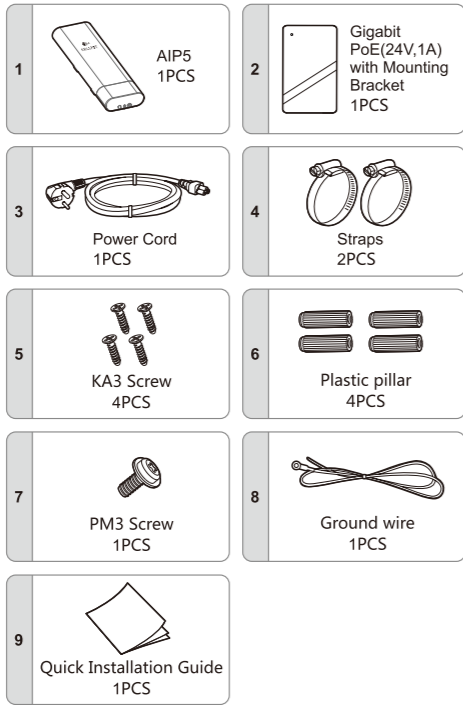


## Quick Installation Guide

900M 11ac Wireless Bridge

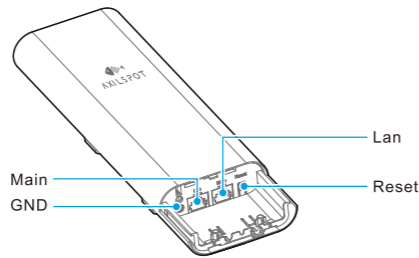
Model: AIP5

### Package Contents

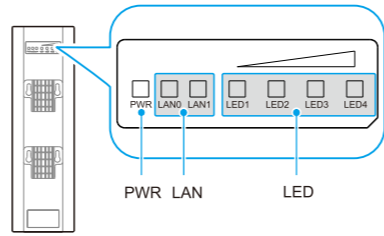


### Port, Button, LED Indicators Description:

View from left to right, the ports are explained below:



Port and Button	Description
GND	Connect the GND terminal to earth ground through grounding cable.
Main LAN	This Gigabit LAN port is used to connect with PoE injector by cable.
LAN	This Gigabit LAN port is used to extend Ethernet, and supports PoE-Out (24V).
Reset	Press the button for about 10 seconds while AIP5 is power on, it will reboot to factory default settings.

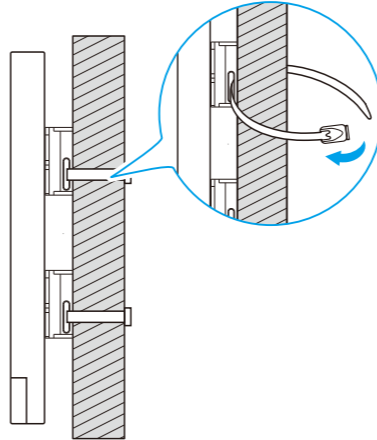


LED	Description
PWR	POWER LED will light blue when AIP5 is Power on.
LAN	LAN LED light solid blue when an active Ethernet connection, and light flash blue when Ethernet data is transmitting.
LED	Signal LED light blue when the wireless function working. <ul style="list-style-type: none"><li>In AP mode, all the four LEDs will light blue.</li><li>In Client or Repeater mode, the corresponding LED(s) will light up when the RSSI value reaches the RSSI Threshold. For example, if the RSSI value is 30, the RSSI Threshold of the four LED are 15, 25, 35, 45 respectively, and then the LEDs whose RSSI Threshold are 15 and 25 will light up.</li></ul>

### Mounting and Connection:

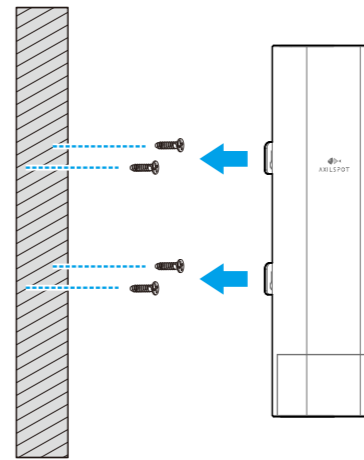
#### Pole Mounting

Place the straps through the slots on the back of the AIP5, and then around the pole. Tighten the straps.



#### Wall Mounting

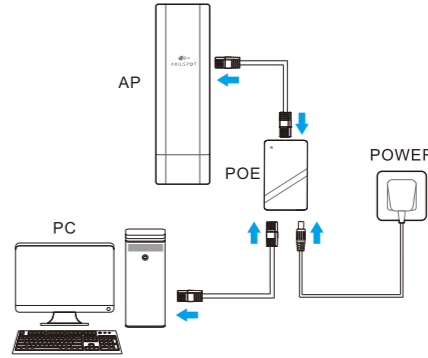
Hammer the attached nails into the wall and make sure the position is exactly matching the device. Then, hang the AIP5 on the wall.



**Note:** Choosing a suitable location, where buildings, trees and other large structures will not obstruct the antenna signals and offers maximum LOS (Line of Sight) to the client's side.

#### Connect the device:

- As below illustrated, connect AIP5 and "PoE" port of the PoE injector with an CAT5e (or above) Cable;
- Connect another CAT5e (or above) Cable between PoE injector "LAN" port and a computer Ethernet port;
- Connect the PoE adapter to the DC injector and plug it into a power socket;
- Make sure both the Power LED and the Network LED light blue.



#### Introduction:

Thanks for choosing Axilspot Seal Access Point product. The Quick Installation Guide is designed to guide you through installation and includes warranty terms. For more information please visit Axilspot website: <http://www.axilspot.com>

#### Statement:

©2016 Axilspot Communication Co., Ltd. All rights reserved.  
No unit or individual shall extract or copy the contents of this guide or disseminate in any form without the company's written permission.

"AXILSPOT" is registered trademark of Shenzhen Axilspot Communication Co., Ltd. Unless otherwise agreed, this manual is used only as a guide, all statements in this manual, information and recommendations do not constitute any express or implied warranty.

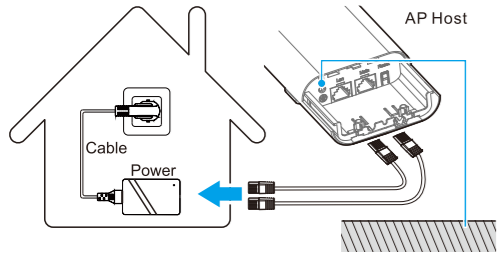
Contents of this manual are subject to change without prior notice.

Axilspot Communication Co., Ltd.  
A302 Han's Innovation Building, No.9018 Beihuan Ave., Nanshan District, Shenzhen, China, 518000  
[support@axilspot.com](mailto:support@axilspot.com)  
[www.axilspot.com](http://www.axilspot.com)

### Lightning & ESD Protection:

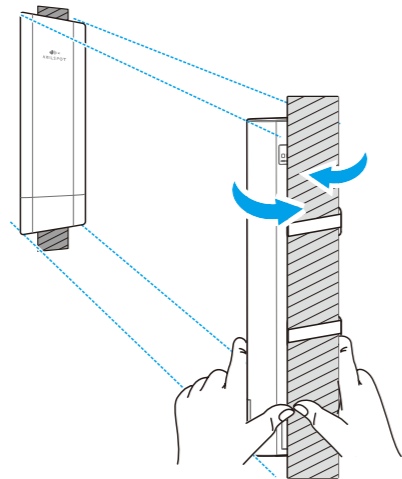
Proper grounding measures are extremely important in outdoor deployment.

- Using shielded CAT5e (or above) cable with ground wire for the connection with provided PoE Adapter, ESD risk can be effectively eliminated.
- If using the general CAT5e cable for the connection, then it is necessary to connect the grounding terminal of the AIP5 to earth ground through grounding cable.

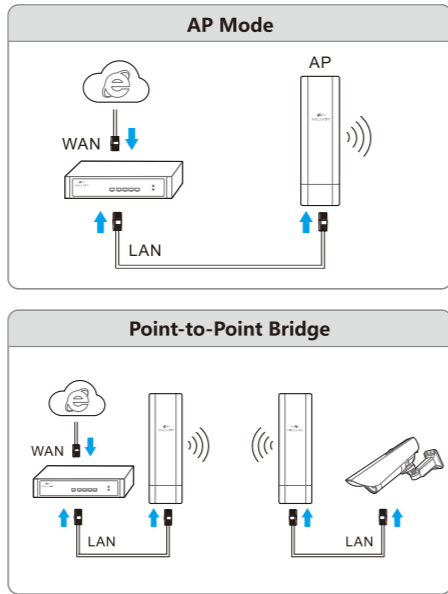


### Antenna Alignment:

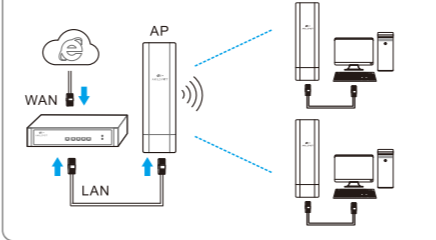
To get the best performance, you can precisely align the direction of the AIP5 with the assistance of 'Wireless Signal Quality Index' on the AIP5 Web Page. Adjust the direction of the AIP5 until get the Best SNR.



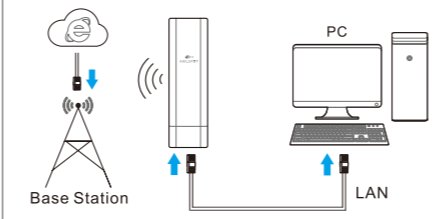
### Typical Applications:



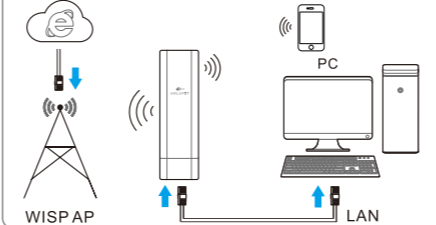
### Point-to-Multipoint Bridge



### Station



### Repeater



### Product Warranty

Thank you for purchasing AXILSPOT products. In order to protect your rights, please read the following terms.

- Axilspot warrants that starting from the date of shipment by Axilspot to the original purchaser ("customer"), the purchase price includes a one-year limited warranty for the hardware components.
- If we determine that the hardware components of a Product do not conform to this Product Warranty during the applicable warranty period we will, at our option, repair or replace the Product, or refund the original purchase price of the Product.
- Any repaired or replacement products will be warranted for the remainder of the original Warranty Period or Ninety (90) days after receipt of the repaired or replacement product(s), whichever is longer. If the hardware product is purchased from an Axilspot reseller, the reseller will handle and be responsible for the warranty return process for its end users.
- If the hardware product was purchased directly from Axilspot, the end user will be responsible for the warranty return process.
- This warranty is provided only to the original end user, and is not transferrable. The warranty ends upon transfer of the hardware product to a new owner.

### Warranty Exclusions

- This product warranty will not apply if the hardware has been:
- Altered or disassembled by anyone other than us or as authorized by us.
  - Subjected to abnormal physical or electrical stress or misuse.
  - Rebranded, painted for physically modified.
  - Improperly installed or not used according to product operation instruction.
  - Damaged by using third party firmware.
  - Not received by us within 30 days of insurance of the RMA.

### RMA and Software Upgrade Service

Please log on Axilspot website <http://www.axilspot.com> for detailed RMA process, product information and download the latest software.

### Special Announcement

This service commitment applies to Axilspot products sold out of mainland China. After-sales service provisions agreed separately shall be subject to contract.

**Note:** Axilspot company interpretation and amendments shall prevail within the limits of national laws and regulations.



### CE Mark Warning

This is a Class B Product. In a domestic environment, this product may cause radio interference, in which case the user may be required to take adequate measures. This device complies with EU 1999/5/EC.

#### NOTE:

- The manufacturer is not responsible for any radio or TV interference caused by unauthorized modifications to this equipment.
- To avoid unnecessary radio interference, it is recommended to use a shielded RJ45 cable.



### Federal Communication Commission Interference Statement

This equipment has been tested and found to comply with the limits for a Class B digital device, pursuant to Part 15 of the FCC Rules. These limits are designed to provide reasonable protection against harmful interference in a residential installation. This equipment generates, uses and can radiate radio frequency energy and, if not installed and used in accordance with the instructions, may cause harmful interference to radio communications. However, there is no guarantee that interference will not occur in a particular installation. If this equipment does cause harmful interference to radio or television reception, which can be determined by turning the

equipment off and on, the user is encouraged to try to correct the interference by one of the following measures:

- Reorient or relocate the receiving antenna.
- Increase the separation between the equipment and receiver.
- Connect the equipment into an outlet on a circuit different from that to which the receiver is connected.
- Consult the dealer or an experienced radio/TV technician for help.

FCC Caution: Any changes or modifications not expressly approved by the party responsible for compliance could void the user's authority to operate this equipment.

This device complies with Part 15 of the FCC Rules. Operation is subject to the following two conditions: (1) This device may not cause harmful interference, and (2) this device must accept any interference received, including interference that may cause undesired operation.

This device and its antenna(s) must not be co-located or operating in conjunction with any other antenna or transmitter.

#### IMPORTANT NOTE:

**FCC Radiation Exposure Statement:**  
This equipment complies with FCC radiation exposure limits set forth for an uncontrolled environment. This equipment should be installed and operated with minimum distance 20cm between the radiator & your body.