



Shenzhen Centre Quality Accreditation Technology Co., Ltd.

Address: 1 F., Block B of Complex Building, Baisha Logistics Park, No.3011
Shahe West Road, Nanshan District, Shenzhen, China

Telephone: +86-755-26648640
Fax: +86-755-26648637
Website: www.cqa-cert.com

Report No.: CQASZ161001345E-01
Report Version: V01

MEASUREMENT REPORT

Test Report

1 Cover page

Applicant: Smart Power Technology Co., Ltd.

Address of Applicant: Area 201#, Entrepreneurial Dream Block, Greenland Rose city, No#129 of North RD of Ai xi hu, High Tech Industrial Development Zone, Nanchang, Jiangxi Province, China

Manufacturer: Smart Power Technology Co., Ltd.

Address of Manufacturer: Area 201#, Entrepreneurial Dream Block, Greenland Rose city, No#129 of North RD of Ai xi hu, High Tech Industrial Development Zone, Nanchang, Jiangxi Province, China

Equipment Under Test (EUT):

Product: Smart Thermometer

Model No.: ZNWXZNTWJ

Brand Name: N/A

FCC ID: 2AKIO-ZNTWJ

Standards: 47 CFR Part 15, Subpart C

Date of Test: 2016-11-01 to 2016-11-28

Date of Issue: 2016-11-28

Test Result : **PASS***

Reviewed By:

(Aaron Ma)

Approved By:

(Owen Zhou)



* In the configuration tested, the EUT complied with the standards specified above.

2 Version

Revision History Of Report

Report No.	Version	Description	Issue Date
CQASZ161001345E-01	Rev.01	Initial report	2016-11-28

3 Test Summary

Test Item	Test Requirement	Test method	Result
Antenna Requirement	47 CFR Part 15, Subpart C Section 15.203	ANSI C63.10 (2013)	PASS
Field Strength of the Fundamental Signal	47 CFR Part 15, Subpart C Section 15.249 (a)	ANSI C63.10 (2013)	PASS
Spurious Emissions	47 CFR Part 15, Subpart C Section 15.249 (a)/15.209	ANSI C63.10 (2013)	PASS
Restricted bands around fundamental frequency (Radiated Emission)	47 CFR Part 15, Subpart C Section 15.249(a)/15.205	ANSI C63.10 (2013)	PASS
20dB Occupied Bandwidth	47 CFR Part 15, Subpart C Section 15.215 (c)	ANSI C63.10 (2013)	PASS
AC Power Line Conducted Emission	47 CFR Part 15, Subpart C Section 15.207	ANSI C63.10 (2013)	N/A

Note: The EUT power supply by CR2032 Button cell, so the EUT don't need to test AC power line conducted

4 Contents

	Page
1 COVER PAGE.....	1
2 VERSION	2
3 TEST SUMMARY	3
4 CONTENTS	4
5 GENERAL INFORMATION.....	5
5.1 CLIENT INFORMATION.....	5
5.2 GENERAL DESCRIPTION OF EUT	5
5.3 TEST ENVIRONMENT AND MODE	7
5.4 DESCRIPTION OF SUPPORT UNITS.....	7
5.5 TEST LOCATION	7
5.6 STATEMENT OF THE MEASUREMENT UNCERTAINTY	7
5.7 TEST FACILITY	8
5.8 DEVIATION FROM STANDARDS.....	8
5.9 ABNORMALITIES FROM STANDARD CONDITIONS	8
5.10 OTHER INFORMATION REQUESTED BY THE CUSTOMER.....	8
5.11 EQUIPMENT LIST	9
6 TEST RESULTS AND MEASUREMENT DATA.....	10
6.1 ANTENNA REQUIREMENT	10
6.2 RADIATED EMISSION.....	11
6.3 20dB BANDWIDTH.....	18
7 PHOTOGRAPHS	21
7.1 RADIATED EMISSION TEST SETUP	21
7.2 EUT CONSTRUCTIONAL DETAILS	22
END OF THE REPORT	27

5 General Information

5.1 Client Information

Applicant:	Smart Power Technology Co., Ltd.
Address of Applicant:	Area 201#, Entrepreneurial Dream Block, Greenland Rose city, No#129 of North RD of Ai xi hu, High Tech Industrial Development Zone, Nanchang, Jiangxi Province, China
Manufacturer:	Smart Power Technology Co., Ltd.
Address of Manufacturer:	Area 201#, Entrepreneurial Dream Block, Greenland Rose city, No#129 of North RD of Ai xi hu, High Tech Industrial Development Zone, Nanchang, Jiangxi Province, China

5.2 General Description of EUT

Name:	Smart Thermometer
Model No.:	ZNWXZNTWJ
Trade Mark :	N/A
Hardware Version:	V1.2
Software Version:	V0.50
Frequency Range:	2405 MHz ~ 2480MHz
Modulation Type:	ZigBee, IEEE 802.15.4: OQPSK
Number of Channels:	16 (declared by the client)
Sample Type:	Portable production
Test Software of EUT:	RF test (manufacturer declare)
Antenna Type:	Integral antenna
Antenna Gain:	3.3dBi
Power Supply:	DC3.0V (CR2032: Button cell)

Note: The Button cell battery is new battery.

Operation Frequency each of channel							
Channel	Frequency	Channel	Frequency	Channel	Frequency	Channel	Frequency
0	2405MHz	4	2425MHz	8	2445MHz	12	2465MHz
1	2410MHz	5	2430MHz	9	2450MHz	13	2470MHz
2	2415MHz	6	2435MHz	10	2455MHz	14	2475MHz
3	2420MHz	7	2440MHz	11	2460MHz	15	2480MHz

Note:

In section 15.31(m), regards to the operating frequency range over 10 MHz, the Lowest frequency, the middle frequency, and the highest frequency of channel were selected to perform the test, and the selected channel see below:

Channel	Frequency
The Lowest channel(CH0)	2405MHz
The Middle channel(CH07)	2440MHz
The Highest channel(CH15)	2480MHz

5.3 Test Environment and Mode

Operating Environment:	
Temperature:	24.0 °C
Humidity:	52 % RH
Atmospheric Pressure:	1008 mbar
Test Mode:	Use test software (RF test) to set the lowest frequency, the middle frequency and the highest frequency keep transmitting of the EUT.

5.4 Description of Support Units

The EUT has been tested with associated equipment below.

Description	Manufacturer	Model No.	Remark	FCC certification
Button cell	PANASONIC	CR2032	Provide by client	/
Notebook	Lenovo	Lenovo ideapad 100-14IBY	Provide by lab	DOC

5.5 Test Location

All tests were performed at:

Shenzhen Tongce Testing Lab,

1F, Leinuo Watch Building, Fuyong Town, Baoan Dist, Shenzhen, China

5.6 Statement of the measurement uncertainty

The data and results referenced in this document are true and accurate.

The reader is cautioned that there may be errors within the calibration limits of the equipment and facilities.

The measurement uncertainty was calculated for all measurements listed in this test report acc. to CISPR 16 - 4 „Specification for radio disturbance and immunity measuring apparatus and methods – Part 4: Uncertainty in EMC Measurements“ and is documented in the **Shenzhen Tongce Testing Lab** quality system acc. to DIN EN ISO/IEC 17025.

Furthermore, component and process variability of devices similar to that tested may result in additional deviation. The manufacturer has the sole responsibility of continued compliance of the device.

Hereafter the best measurement capability for **TCT** laboratory is reported:

Test	Range	Uncertainty	Notes
Radiated Emission	Below 1GHz	±3.92dB	(1)
Radiated Emission	Above 1GHz	±4.28dB	(1)
Conducted Disturbance	0.15~30MHz	±2.56dB	(1)

(1) This uncertainty represents an expanded uncertainty expressed at approximately the 95% confidence level using a coverage factor of k=2.

5.7 Test Facility

The test facility is recognized, certified, or accredited by the following organizations:

FCC – Registration No.: 572331

Shenzhen Tongce Testing Lab has been registered and fully described in a report filed with the (FCC) Federal Communications Commission. The acceptance letter from the FCC is maintained in our files. Registration 572331

5.8 Deviation from Standards

None.

5.9 Abnormalities from Standard Conditions

None.

5.10 Other Information Requested by the Customer

None.

5.11 Equipment List

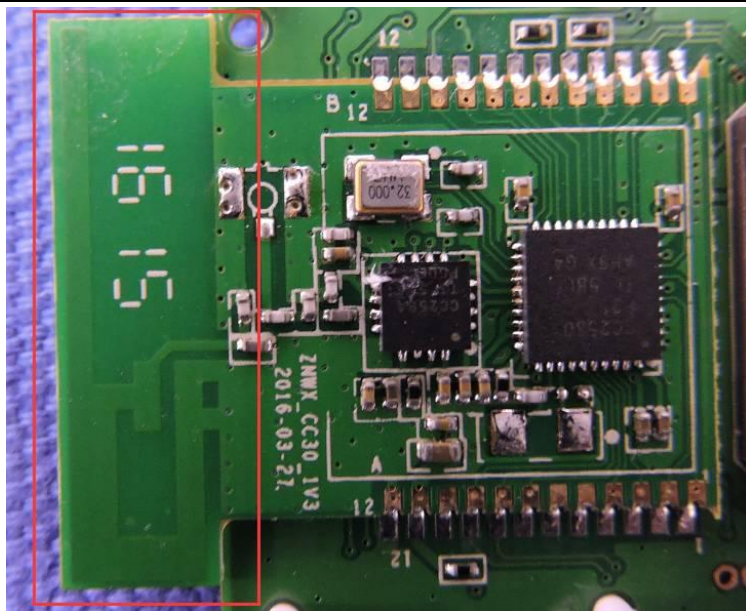
Item	Test Equipment	Manufacturer	Model No.	Serial No.	Calibration Due Date
1	ESPI Test Receiver	R&S	ESVD	100008	2017/08/11
2	Spectrum Analyzer	R&S	FSEM	848597/001	2017/08/11
3	Spectrum Analyzer	Agilent	N9020A	MY49100060	2017/08/12
4	Pre-amplifier	EM Electronics Corporation CO.,LTD	EM30265	07032613	2017/08/11
5	Pre-amplifier	HP	8447D	2727A05017	2017/08/11
6	Loop antenna	ZHINAN	ZN30900A	12024	2017/08/13
7	Broadband Antenna	R&S	VULB9163	340	2017/08/13
8	Horn Antenna	R&S	BBHA 9120D	631	2017/08/13
9	Horn Antenna	R&S	BBHA 9170	373	2017/08/13
10	Antenna Mast	CCS	CC-A-4M	N/A	N/A
11	Coax cable (9KHz~40GHz)	TCT	RE-low-01	N/A	2017/08/11
12	Coax cable (9KHz~40GHz)	TCT	RE-high-02	N/A	2017/08/11
13	Coax cable (9KHz~40GHz)	TCT	RE-low-02	N/A	2017/08/11
14	Coax cable (9KHz~40GHz)	TCT	RE-high-04	N/A	2017/08/11
15	Spectrum Analyzer	R&S	FSU	200054	2017/08/11
16	Antenna Connector	TCT	RFC-01	N/A	2017/08/12
17	RF cable(9KHz~40GHz)	TCT	RE-06	N/A	2017/08/12
18	LISN	R&S	NSLK 8126	8126453	2017/08/16

Note:

The temporary antenna connector is soldered on the PCB board in order to perform conducted tests and this temporary antenna connector is listed in the equipment list.

6 Test results and Measurement Data

6.1 Antenna Requirement

Standard requirement:	47 CFR Part 15C Section 15.203
<p>15.203 requirement:</p> <p>An intentional radiator shall be designed to ensure that no antenna other than that furnished by the responsible party shall be used with the device. The use of a permanently attached antenna or of an antenna that uses a unique coupling to the intentional radiator, the manufacturer may design the unit so that a broken antenna can be replaced by the user, but the use of a standard antenna jack or electrical connector is prohibited.</p>	
EUT Antenna:	
<p>The antenna is integrated on the main PCB and no consideration of replacement. The best case gain of the antenna is 3.3dBi.</p>	

6.2 Radiated Emission

Test Requirement:	47 CFR Part 15C Section 15.249 and 15.209 and 15.205				
Test Method:	ANSI C63.10: 2013				
Test Site:	Measurement Distance: 3m (Semi-Anechoic Chamber)				
Receiver Setup:	Frequency	Detector	RBW	VBW	Remark
	0.009MHz-0.090MHz	Peak	10kHz	30KHz	Peak
	0.009MHz-0.090MHz	Average	10kHz	30KHz	Average
	0.090MHz-0.110MHz	Quasi-peak	10kHz	30KHz	Quasi-peak
	0.110MHz-0.490MHz	Peak	10kHz	30KHz	Peak
	0.110MHz-0.490MHz	Average	10kHz	30KHz	Average
	0.490MHz -30MHz	Quasi-peak	10kHz	30kHz	Quasi-peak
	30MHz-1GHz	Quasi-peak	120 kHz	300KHz	Quasi-peak
	Above 1GHz	Peak	1MHz	3MHz	Peak
		Peak	1MHz	10Hz	Average
Note: For fundamental frequency, RBW=5MHz, VBW=5MHz, Peak detector is for PK value, RMS detector is for Average value.					
Limit: (Spurious Emissions and band edge)	Frequency	Field strength (microvolt/meter)	Limit (dBuV/m)	Remark	Measurement distance (m)
	0.009MHz-0.490MHz	2400/F(kHz)	-	-	300
	0.490MHz-1.705MHz	24000/F(kHz)	-	-	30
	1.705MHz-30MHz	30	-	-	30
	30MHz-88MHz	100	40.0	Quasi-peak	3
	88MHz-216MHz	150	43.5	Quasi-peak	3
	216MHz-960MHz	200	46.0	Quasi-peak	3
	960MHz-1GHz	500	54.0	Quasi-peak	3
	Above 1GHz	500	54.0	Average	3
	Note: 1) 15.35(b), Unless otherwise specified, the limit on peak radio frequency emissions is 20dB above the maximum permitted average emission limit applicable to the equipment under test. This peak limit applies to the total peak emission level radiated by the device. 2) Emissions radiated outside of the specified frequency bands, except for harmonics, shall be attenuated by at least 50 dB below the level of the fundamental or to the general radiated emission limits in Section 15.209, whichever is the lesser attenuation.				
Limit: (Field strength of the fundamental signal)	Frequency	Limit (dBuV/m @3m)		Remark	
	2400MHz-2483.5MHz	94.0		Average Value	
		114.0		Peak Value	

Test Setup:

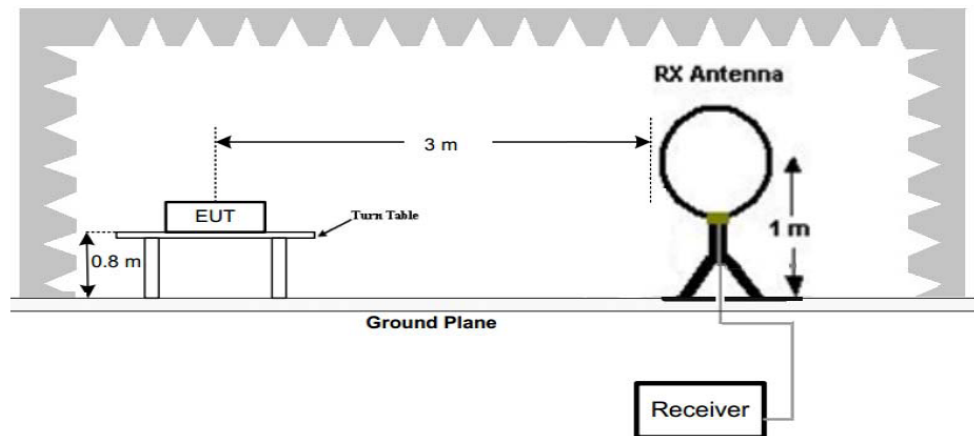


Figure 1. Below 30MHz

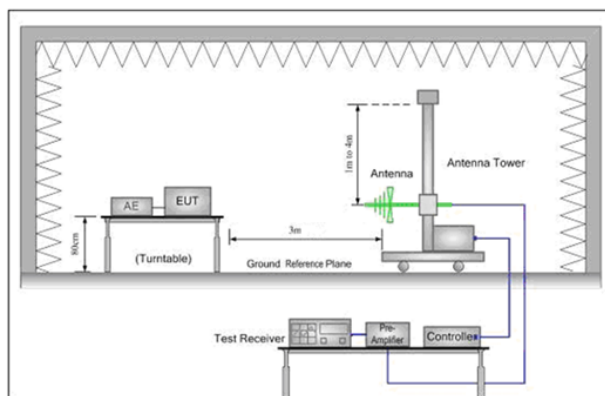


Figure 2. 30MHz to 1GHz

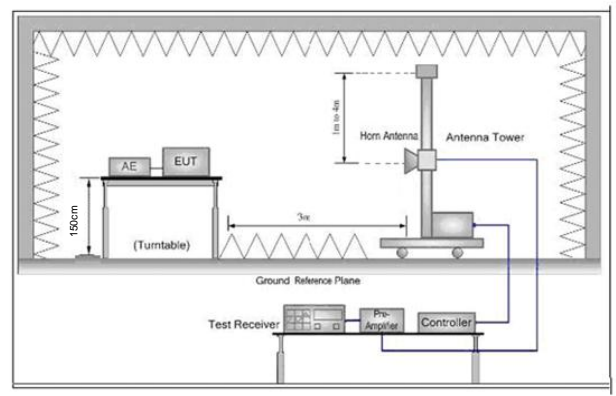


Figure 3. Above 1 GHz

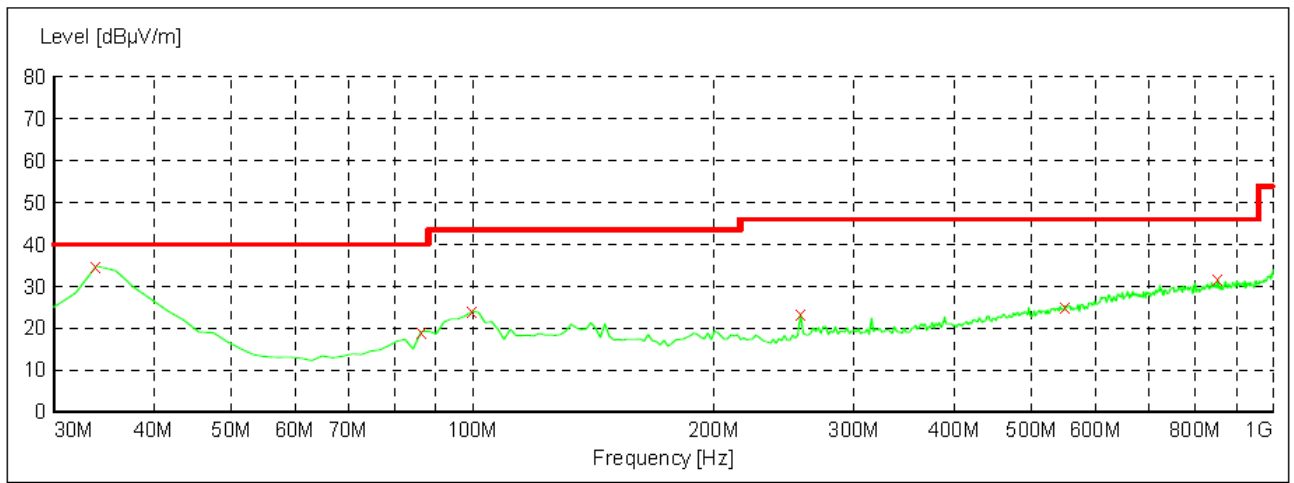
Test Procedure:

- a. 1) Below 1G: The EUT was placed on the top of a rotating table 0.8 meters above the ground at a 3 meter semi-anechoic chamber. The table was rotated 360 degrees to determine the position of the highest radiation.
2) Above 1G: The EUT was placed on the top of a rotating table 1.5 meters above the ground at a 3 meter semi-anechoic chamber. The table was rotated 360 degrees to determine the position of the highest radiation.
Note: For the radiated emission test above 1GHz:
Place the measurement antenna away from each area of the EUT determined to be a source of emissions at the specified measurement distance, while keeping the measurement antenna aimed at the source of emissions at each frequency of significant emissions, with polarization oriented for maximum response. The measurement antenna may have to be higher or lower than the EUT, depending on the radiation pattern of the emission and staying aimed at the emission source for receiving the maximum signal. The final measurement antenna elevation shall be that which maximizes the emissions. The measurement antenna elevation for maximum emissions shall be restricted to a range of heights of from 1 m to 4 m above the ground or reference ground plane.
- b. The EUT was set 3 meters away from the interference-receiving antenna, which was mounted on the top of a variable-height antenna tower.
- c. The antenna height is varied from one meter to four meters above the ground to determine the maximum value of the field strength. Both horizontal and vertical polarizations of the antenna are set to make the measurement.
- d. For each suspected emission, the EUT was arranged to its worst case and then the antenna was tuned to heights from 1 meter to 4 meters (for the test frequency of below 30MHz, the antenna was tuned to heights 1 meter) and the rotatable table was turned from 0 degrees to 360 degrees to find the maximum reading.

	<p>e. The test-receiver system was set to Peak Detect Function and Specified Bandwidth with Maximum Hold Mode.</p> <p>f. If the emission level of the EUT in peak mode was 10dB lower than the limit specified, then testing could be stopped and the peak values of the EUT would be reported. Otherwise the emissions that did not have 10dB margin would be re-tested one by one using peak, quasi-peak or average method as specified and then reported in a data sheet.</p> <p>g. Test the EUT in the lowest channel,the middle channel,the Highest channel</p> <p>h. The radiation measurements are performed in X, Y, Z axis positioning for Transmitting mode,And found the X axis positioning which it is worse case.</p> <p>i. Repeat above procedures until all frequencies measured was complete.</p>
Instruments Used:	Refer to section 5.10 for details
Exploratory Test Mode:	Transmitting mode
Final Test Mode:	<p>Pretest the EUT at Transmitting mode, found the Transmitting mode which it is worse case</p> <p>Pretest the EUT at Transmitting mode, For below 1GHz part, through pre-scan, the worst case is the lowest channel.</p> <p>Only the worst case is recorded in the report.</p>
Test Voltage:	DC3.0V
Test Results:	Pass

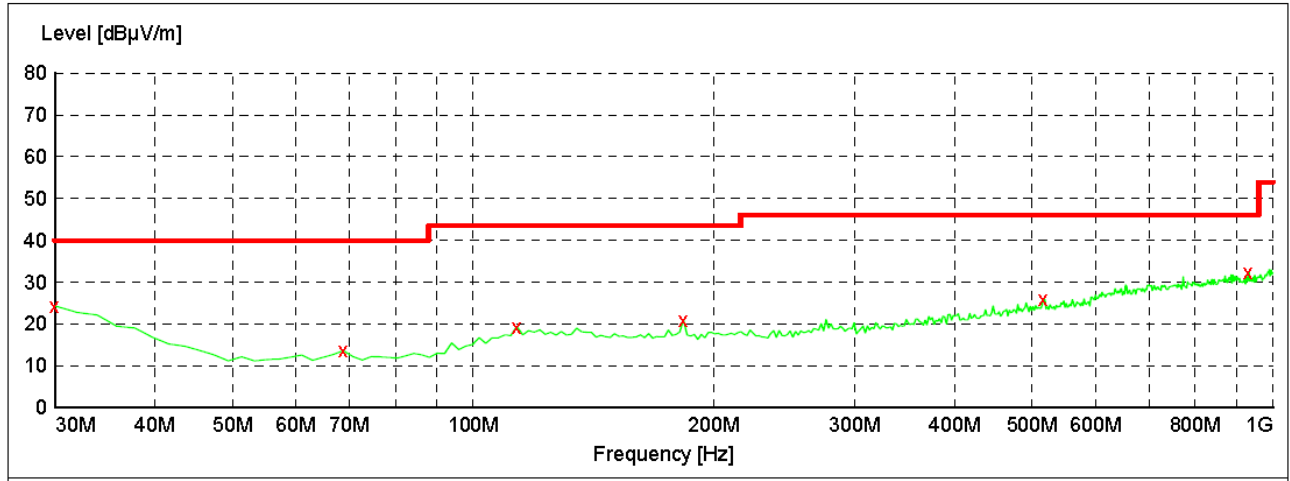
Measurement Data

30MHz~1GHz		
Test mode:	Transmitting (lowest channel)	Vertical



Frequency MHz	Level dBμV/m	Transd dB	Limit dBμV/m	Margin dB	Det.
33.880000	34.90	17.7	40.0	5.1	-PK-
86.260000	19.20	9.0	40.0	20.8	-PK-
99.840000	24.00	11.1	43.5	19.5	-PK-
256.980000	23.50	14.4	46.0	22.5	-PK-
549.920000	25.30	21.0	46.0	20.7	-PK-
854.500000	31.70	25.2	46.0	14.3	-PK-

Test mode:	Transmitting (lowest channel)	Horizontal
------------	-------------------------------	------------



Frequency MHz	Level dBμV/m	Transd dB	Limit dBμV/m	Margin dB	Det.
30.000000	24.30	20.8	40.0	15.7	-PK-
68.800000	13.60	8.2	40.0	26.4	-PK-
113.420000	19.40	14.0	43.5	24.1	-PK-
183.260000	21.10	13.1	43.5	22.4	-PK-
516.940000	25.90	20.3	46.0	20.1	-PK-
934.040000	32.30	26.3	46.0	13.7	-PK-

Above 1GHz							
Test mode:		Transmitting	Test channel:		Lowest		
Frequency	Meter Reading	Factor	Emission Level	Limits	Over	Detector Type	Ant. Pol.
(MHz)	(dBμV)	(dB)	(dBμV/m)	(dBμV/m)	(dB)		H/V
2390	46.91	-4.36	42.55	74	-31.45	peak	H
2390	35.05	-4.36	30.69	54	-23.31	AVG	H
2400	53.76	-4.36	49.40	74	-24.60	peak	H
2400	40.33	-4.36	35.97	54	-18.03	AVG	H
2405	105.90	-4.37	101.53	114	-12.47	peak	H
2405	97.36	-4.37	92.99	94	-1.01	AVG	H
4810	49.62	-5.18	44.44	74	-29.56	peak	H
4810	36.14	-5.18	30.96	54	-23.04	AVG	H
7215	49.27	-6.45	42.82	74	-31.18	peak	H
7215	35.33	-6.45	28.88	54	-25.12	AVG	H
2390	49.62	-4.36	45.26	74	-28.74	peak	V
2390	35.84	-4.36	31.48	54	-22.52	AVG	V
2400	54.39	-4.36	50.03	74	-23.97	peak	V
2400	40.65	-4.36	36.29	54	-17.71	AVG	V
2405	102.45	-4.37	98.08	114	-15.92	peak	V
2405	93.34	-4.37	88.97	94	-5.03	AVG	V
4810	49.17	-5.18	43.99	74	-30.01	peak	V
4810	36.12	-5.18	30.94	54	-23.06	AVG	V
7215	48.76	-6.45	42.31	74	-31.69	peak	V
7215	36.38	-6.45	29.93	54	-24.07	AVG	V

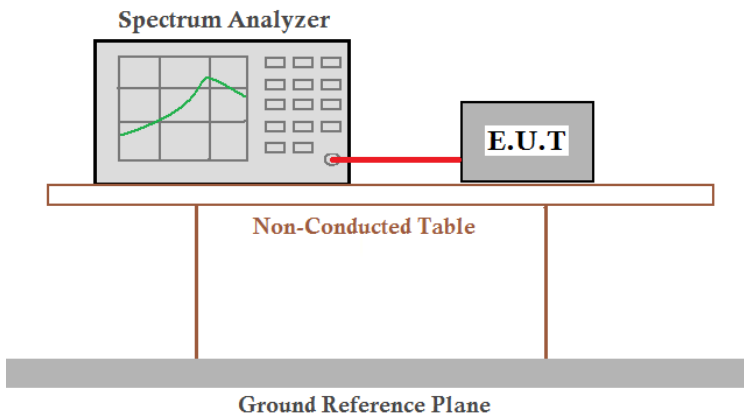
Test mode:		Transmitting		Test channel:		Middle	
Frequency	Meter Reading	Factor	Emission Level	Limits	Over	Detector Type	Ant. Pol.
(MHz)	(dB μ V)	(dB)	(dB μ V/m)	(dB μ V/m)	(dB)		H/V
2440	102.43	-4.39	98.04	114	-15.96	peak	H
2440	92.61	-4.39	88.22	94	-5.78	AVG	H
4880	50.21	-5.19	45.02	74	-28.98	peak	H
4880	36.60	-5.19	31.41	54	-22.59	AVG	H
7320	49.43	-6.47	42.96	74	-31.04	peak	H
7320	36.93	-6.47	30.46	54	-23.54	AVG	H
2440	99.03	-4.39	94.64	114	-19.36	peak	V
2440	89.98	-4.39	85.59	94	-8.41	AVG	V
4880	49.56	-5.19	44.37	74	-29.63	peak	V
4880	36.74	-5.19	31.55	54	-22.45	AVG	V
7320	50.18	-6.47	43.71	74	-30.29	peak	V
7320	35.38	-6.47	28.91	54	-25.09	AVG	V

Test mode:		Transmitting	Test channel:		Highest		
Frequency	Meter Reading	Factor	Emission Level	Limits	Over	Detector Type	Ant. Pol.
(MHz)	(dBμV)	(dB)	(dBμV/m)	(dBμV/m)	(dB)		H/V
2480	100.19	-4.22	95.97	114	-18.03	peak	H
2480	91.80	-4.22	87.58	94	-6.42	AVG	H
2483.5	56.57	-4.22	52.35	74	-21.65	peak	H
2483.5	45.39	-4.22	41.17	54	-12.83	AVG	H
4960	49.40	-5.2	44.20	74	-29.80	peak	H
4960	37.16	-5.2	31.96	54	-22.04	AVG	H
7440	49.63	-6.47	43.16	74	-30.84	peak	H
7440	37.05	-6.47	30.58	54	-23.42	AVG	H
2480	97.58	-4.22	93.36	114	-20.64	peak	V
2480	89.12	-4.22	84.90	94	-9.10	AVG	V
2483.5	57.35	-4.22	53.13	74	-20.87	peak	V
2483.5	45.27	-4.22	41.05	54	-12.95	AVG	V
4960	51.04	-5.2	45.84	74	-28.16	peak	V
4960	38.78	-5.2	33.58	54	-20.42	AVG	V
7440	50.50	-6.47	44.03	74	-29.97	peak	V
7440	36.08	-6.47	29.61	54	-24.39	AVG	V

Remark:

- 1) The field strength is calculated by adding the Antenna Factor, Cable Factor & Preamplifier. The basic equation with a sample calculation is as follows:
Final Test Level = Receiver Reading + Antenna Factor + Cable Factor – Preamplifier Factor
- 2) Scan from 9kHz to 25GHz, The disturbance above 10GHz and below 30MHz was very low, and the above harmonics were the highest point could be found when testing, so only the above harmonics had been displayed. The amplitude of spurious emissions from the radiator which are attenuated more than 20dB below the limit need not be reported .

6.3 20dB Bandwidth

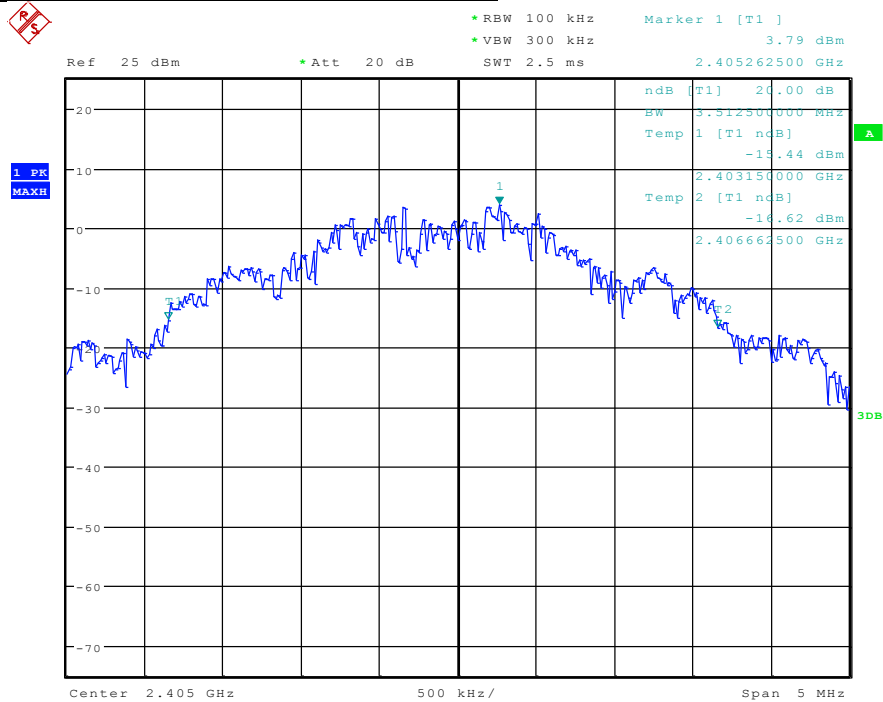
Test Requirement:	47 CFR Part 15C Section 15.215
Test Method:	ANSI C63.10:2013
Test Setup:	
Instruments Used:	Refer to section 5.10 for details
Test Mode:	Transmitting with OQPSK modulation.
Limit:	N/A
Test Results:	Pass

Measurement Data

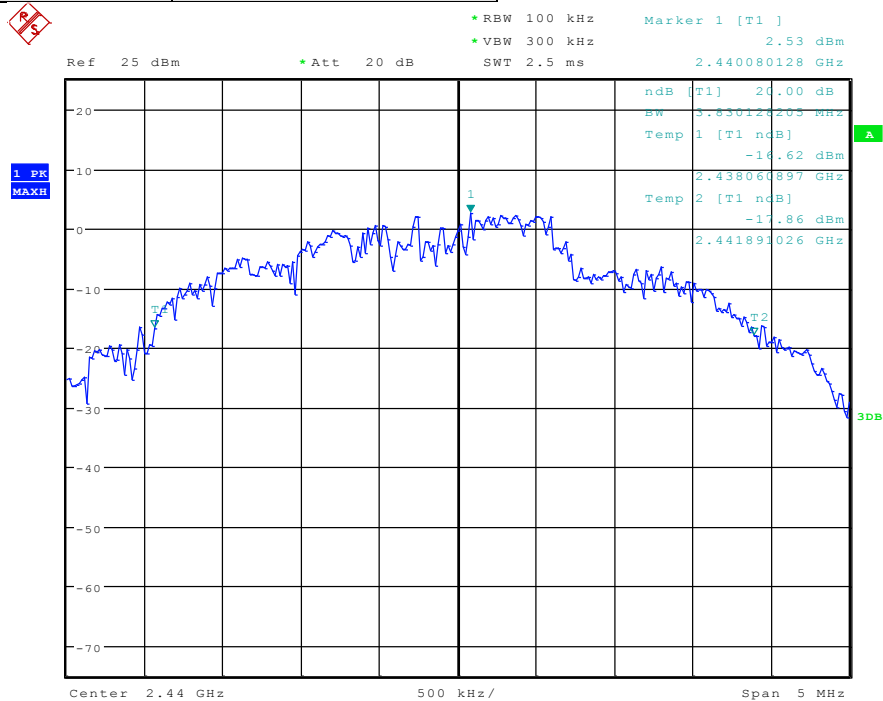
Test channel	20dB bandwidth (MHz)	Results
Lowest	3.513	Pass
Middle	3.830	Pass
Highest	3.029	Pass

Test plot as follows:

Test channel: **Lowest**



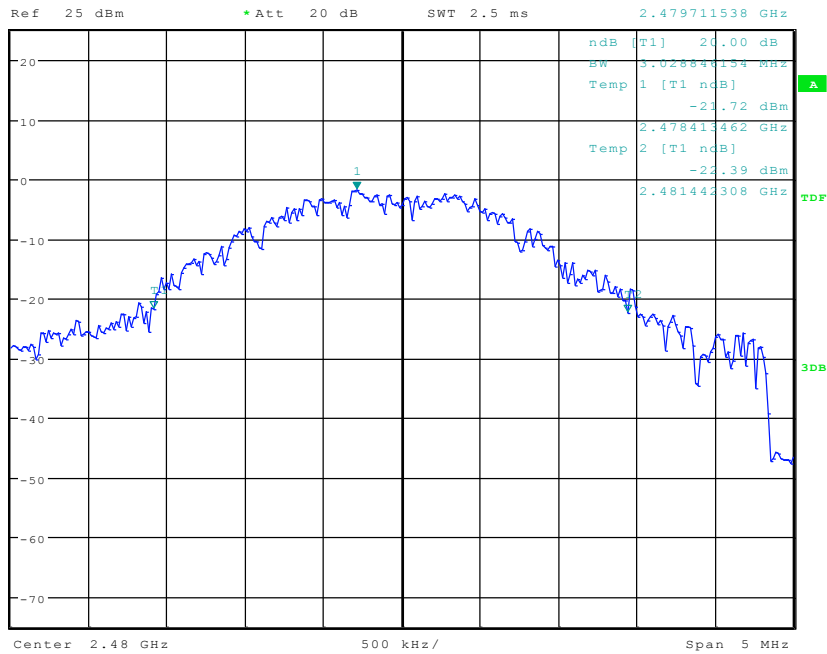
Test channel: **Middle**



Test channel: Highest



* RBW 100 kHz Marker 1 [T1] -1.69 dBm
 * VBW 300 kHz
 SWT 2.5 ms 2.479711538 GHz



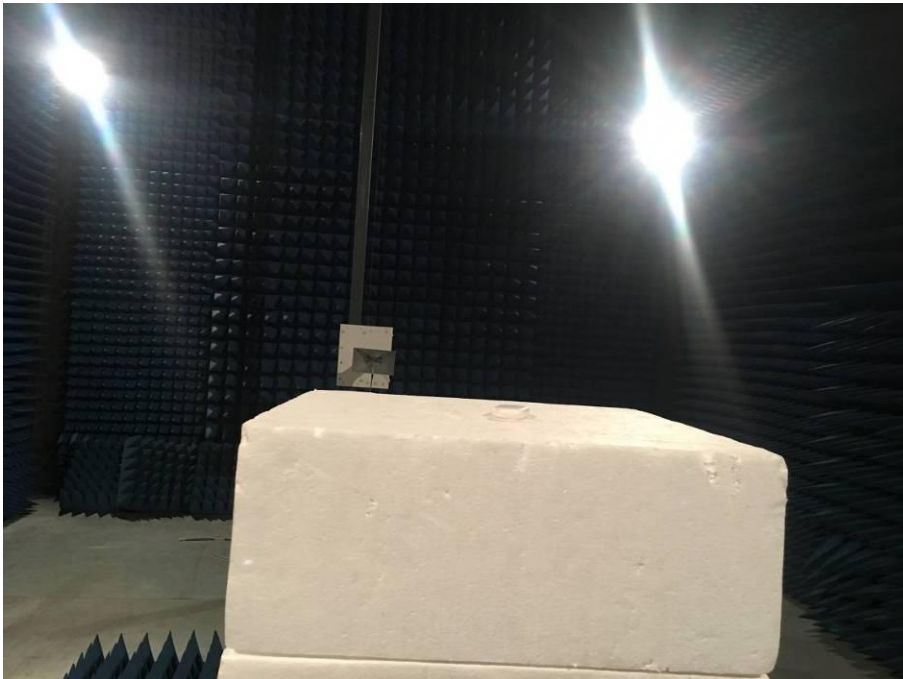
7 Photographs

7.1 Radiated Emission Test Setup

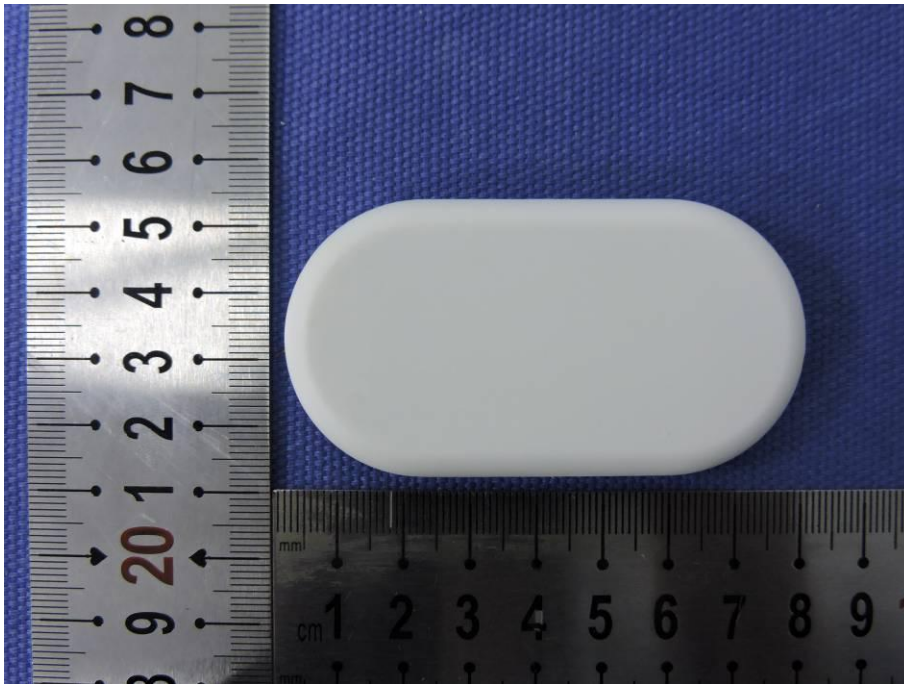
Below 1GHz:



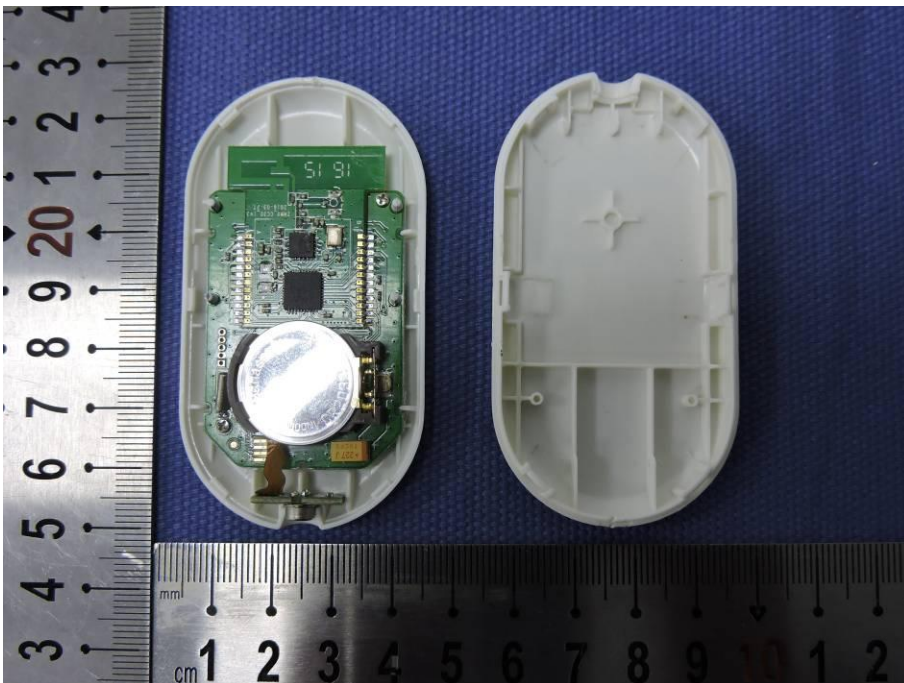
Above 1GHz:

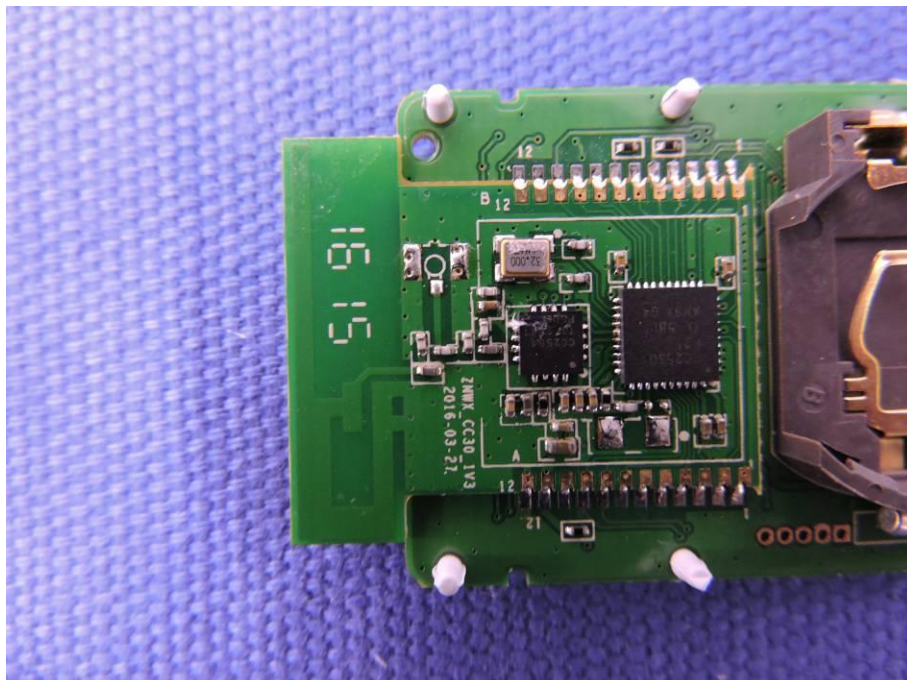
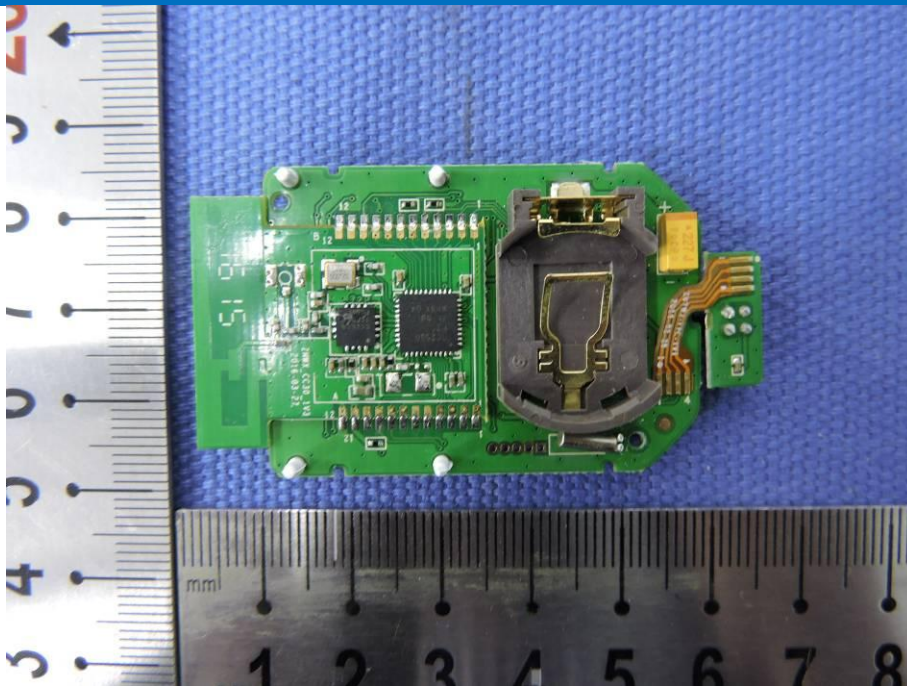


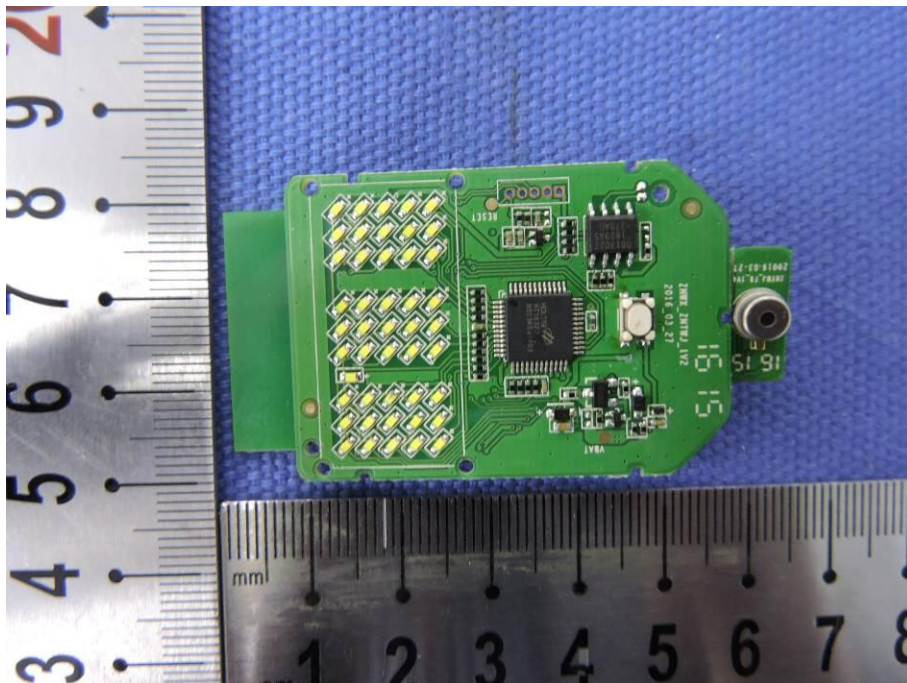
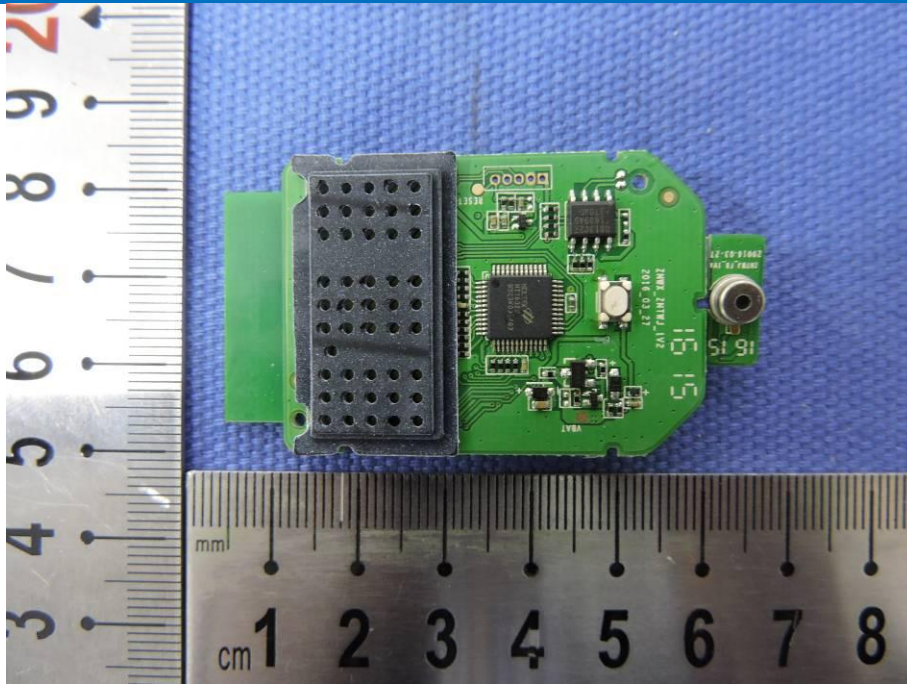
7.2 EUT Constructional Details

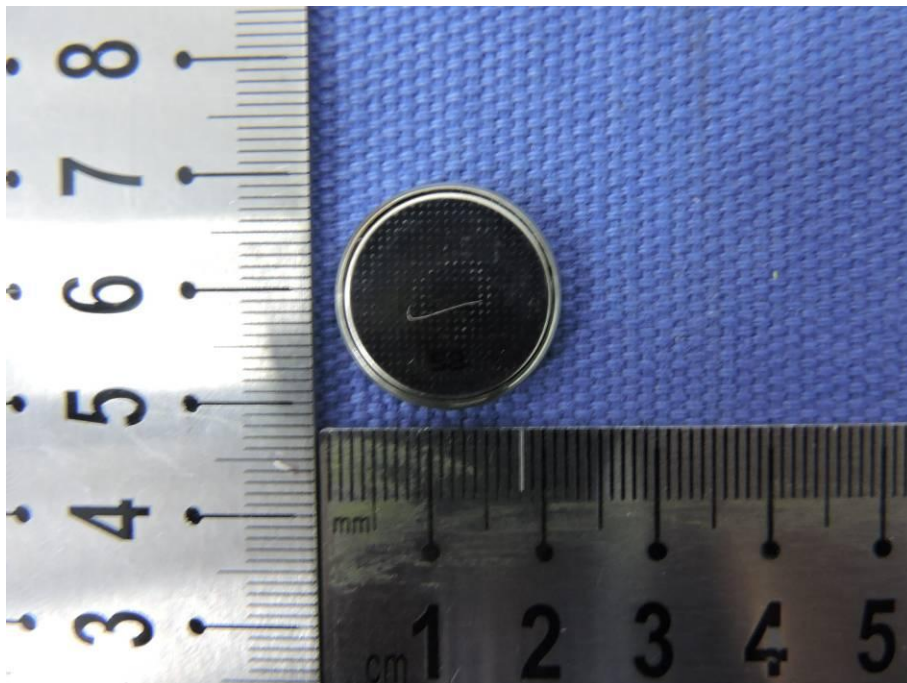
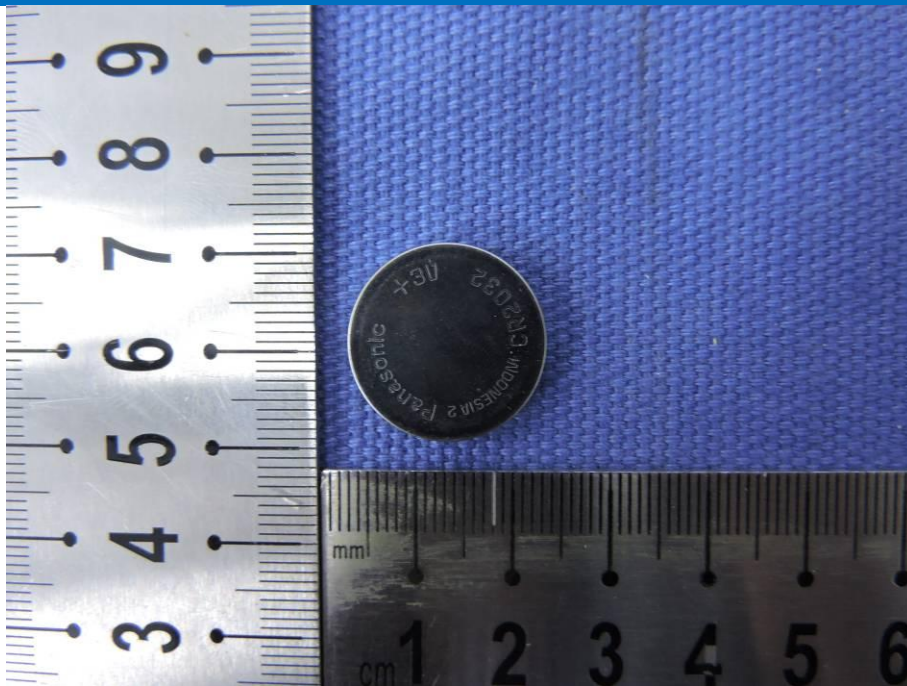












END OF THE REPORT