

**FCC 47 CFR PART 15 SUBPART C**

**CERTIFICATION TEST REPORT**

*For*

Touch, Infinity Dock

MODEL No.: FT102-Z, FT115-Z

FCC ID: 2AKHBFT102

Trademark: FANTEM

REPORT NO.: ES161013031E4

ISSUE DATE: October 31, 2016

*Prepared for*

Fantem Technologies(Shenzhen) Co.,Ltd

5th Floor, Yingtang Building, South 5th Road, HI-tech Park, Nanshan District,  
Shenzhen, Guangdong, China, 518057

*Prepared by*

EMTEK (SHENZHEN) CO., LTD.

Bldg 69, Majialong Industry Zone, Nanshan District, Shenzhen,  
Guangdong, China

TEL: 86-755-26954280

FAX: 86-755-26954282

## Table of Contents

<b>1</b>	<b>TEST RESULT CERTIFICATION.....</b>	<b>3</b>
<b>2</b>	<b>EUT TECHNICAL DESCRIPTION.....</b>	<b>4</b>
<b>3</b>	<b>SUMMARY OF TEST RESULT.....</b>	<b>8</b>
<b>4</b>	<b>TEST METHODOLOGY.....</b>	<b>9</b>
4.1	GENERAL DESCRIPTION OF APPLIED STANDARDS.....	9
4.2	MEASUREMENT EQUIPMENT USED.....	9
4.3	DESCRIPTION OF TEST MODES.....	10
<b>5</b>	<b>FACILITIES AND ACCREDITATIONS.....</b>	<b>11</b>
5.1	FACILITIES.....	11
5.2	LABORATORY ACCREDITATIONS AND LISTINGS.....	11
<b>6</b>	<b>TEST SYSTEM UNCERTAINTY.....</b>	<b>12</b>
<b>7</b>	<b>SETUP OF EQUIPMENT UNDER TEST.....</b>	<b>13</b>
7.1	RADIO FREQUENCY TEST SETUP 1.....	13
7.2	RADIO FREQUENCY TEST SETUP 2.....	13
7.3	CONDUCTED EMISSION TEST SETUP.....	14
7.4	BLOCK DIAGRAM CONFIGURATION OF TEST SYSTEM.....	15
7.5	SUPPORT EQUIPMENT.....	15
<b>8</b>	<b>TEST REQUIREMENTS.....</b>	<b>16</b>
8.1	OCCUPIED BANDWIDTH.....	16
8.2	FREQUENCY STABILITY.....	18
8.3	RADIATED SPURIOUS EMISSION.....	19
8.4	CONDUCTED EMISSION TEST.....	28
<b>9</b>	<b>ANTENNA APPLICATION.....</b>	<b>31</b>
<b>10</b>	<b>PHOTOS OF TEST SETUP.....</b>	<b>32</b>
<b>11</b>	<b>PHOTOS OF THE EUT.....</b>	<b>34</b>

## 1 TEST RESULT CERTIFICATION

Applicant: Fantem Technologies(Shenzhen) Co.,Ltd  
5th Floor, Yingtang Building, South 5th Road, HI-tech Park, Nanshan District,  
Shenzhen, Guangdong, China, 518057

Manufacturer: Fantem Technologies(Shenzhen) Co.,Ltd  
North, 3/F, Yitao Technology Industrial Park, Baihua Yuan Rd., The Second Industrial  
Area, Guangming Sub-district Office, Guangming New District, Shenzhen,  
Guangdong, China

EUT Description: Touch, Infinity Dock

Model Number: FT102-Z, FT115-Z

File Number: ES161013031E4

Date of Test: October 15, 2016 to October 31, 2016


Measurement Procedure Used:


APPLICABLE STANDARDS	
STANDARD	TEST RESULT
FCC 47 CFR Part 2, Subpart J FCC 47 CFR Part 15, Subpart C	PASS

The above equipment was tested by EMTEK (SHENZHEN) CO., LTD. The test data, data evaluation, test procedures, and equipment configurations shown in this report were made in accordance with the procedures given in ANSI C63.10 (2013) and the energy emitted by the sample EUT tested as described in this report is in compliance with the requirements of FCC Rules Part 2 and Part 15.225

The test results of this report relate only to the tested sample identified in this report

Date of Test : October 15, 2016 to October 31, 2016

Prepared by :   
Joe Xia/Editor

Reviewer :   
Yaping Shen/Supervisor

Approve & Authorized Signer :   
Lisa Wang/Manager

## 2 EUT TECHNICAL DESCRIPTION

Characteristics	Description
<b>Device Type</b>	Bluetooth 4.0 with classic model
<b>Data Rate</b>	1Mbps for BT v2.0/v2.1/v3.0 BR GFSK modulation 2Mbps for BT v2.0/v2.1/v3.0 EDR pi/4-DQPSK modulation 3Mbps for BT v2.0/v2.1/v3.0 EDR 8DPSK modulation
<b>Modulation:</b>	GFSK modulation for BT v2.0/v2.1/v3.0 BR(1Mbps) pi/4-DQPSK modulation for BT v2.0/v2.1/v3.0 EDR(2Mbps) 8DPSK modulation for BT v2.0/v2.1/v3.0 EDR (3Mbps)
<b>Operating Frequency Range(s):</b>	2402-2480MHz for BT v2.0 BR /2.0+EDR; 2402-2480MHz for BT v2.1 BR /2.1+EDR; 2402-2480MHz for BT v3.0 BR /3.0+ EDR;
<b>Number of Channels:</b>	79 channels for BT v2.0/v2.1/v3.0 BR; 79 channels for BT v2.0/v2.1/v3.0 EDR;
<b>Transmit Power Max:</b>	4.330dBm for BT v2.0/v2.1/v3.0 EDR; 4.864dBm for BT v2.0/v2.1/v3.0 BR;
<b>Antenna Type :</b>	FPC Antenna
<b>Antenna Gain:</b>	1.43dBi;
<b>Power supply:</b>	<input checked="" type="checkbox"/> DC supply: DC 3.8/4000mAh from Li-ion Battery and DC 5V from USB Port
	<input checked="" type="checkbox"/> Adapter supply: Model: G101U-050200B-1 Input: 100-240V~, 50-60Hz, 0.25A Output: DC 5V, 2A

**Note:** for more details, please refer to the User's manual of the EUT.

Characteristics	Description
Device Type	Bluetooth 4.0 with BLE model
Data Rate	1Mbps;
Modulation	GFSK;
Operating Frequency Range	2402-2480MHz
Number of Channels	40 Channels
Transmit Power Max	-2.599dBm for BT;
Antenna Type	FPC Antenna
Antenna Gain	1.43dBi
Power supply:	<input checked="" type="checkbox"/> DC supply: DC 3.8/4000mAh from Li-ion Battery and DC 5V from USB Port
	<input checked="" type="checkbox"/> Adapter supply: Model: G101U-050200B-1 Input: 100-240V~, 50-60Hz, 0.25A Output: DC 5V, 2A

**Note:** for more details, please refer to the User's manual of the EUT.

Characteristics	Description
Device Type	Wifi 2.4G Device
IEEE 802.11 WLAN Mode Supported	<input checked="" type="checkbox"/> 802.11b(20MHz bandwidth) <input checked="" type="checkbox"/> 802.11g(20MHz bandwidth) <input checked="" type="checkbox"/> 802.11n(20MHz bandwidth) <input checked="" type="checkbox"/> 802.11n(40MHz bandwidth)
Data Rate	<input checked="" type="checkbox"/> 802.11 b:1,2,5.5,11Mbps <input checked="" type="checkbox"/> 802.11 g:6,9,12,18,24,36,48,54Mbps <input checked="" type="checkbox"/> 802.11n(HT20):MCS0-MCS7 <input checked="" type="checkbox"/> 802.11n(HT40):MCS0-MCS7
MIMO Mode	N/A
Modulation	DSSS with DBPSK/DQPSK/CCK for 802.11b OFDM with BPSK/QPSK/16QAM/64QAM for 802.11g/n
Operating Frequency Range	<input checked="" type="checkbox"/> 2412-2462MHz for 802.11b/g <input checked="" type="checkbox"/> 2412-2462MHz for 802.11n(HT20) <input checked="" type="checkbox"/> 2422-2452MHz for 802.11n(HT40)
Number of Channels	<input checked="" type="checkbox"/> 11 channels for 802.11b/g <input checked="" type="checkbox"/> 11 channels for 802.11n(HT20) <input checked="" type="checkbox"/> 7 channels for 802.11n(HT40)
Transmit Power Max	16.18dBm for 802.11b 14.23dBm for 802.11g 14.24dBm for 802.11n(HT20) 14.22dBm for 802.11n(HT40)
Antenna Type	FPC Antenna
Smart system	<input checked="" type="checkbox"/> SISO for 802.11b/g/n <input type="checkbox"/> MIMO for 802.11n
Antenna Gain	1.43dBi
Power supply:	<input checked="" type="checkbox"/> DC supply: DC 3.8/4000mAh from Li-ion Battery and DC 5V from USB Port
	<input checked="" type="checkbox"/> Adapter supply: Model: G101U-050200B-1 Input: 100-240V~, 50-60Hz, 0.25A Output: DC 5V, 2A

**Note:** for more details, please refer to the User's manual of the EUT.

Characteristics	Description
Device Type	NFC
Modulation:	ASK
Operating Frequency Range(s):	13.56MHz
Number of Channels:	1 channel
Antenna Type :	Induction coil
Power supply:	<input checked="" type="checkbox"/> DC supply: DC 3.8/4000mAh from Li-ion Battery and DC 5V from USB Port
	<input checked="" type="checkbox"/> Adapter supply: Model: G101U-050200B-1 Input: 100-240V~, 50-60Hz, 0.25A Output: DC 5V, 2A

**Note:** for more details, please refer to the User's manual of the EUT.

### 3 SUMMARY OF TEST RESULT

FCC Part Clause	Test Parameter	Verdict	Remark
2.1049	Occupied Bandwidth	Pass	
15.225(e)	Frequency stability	Pass	
15.225(d) 15.209 15.205	Radiated Spurious Emissions	Pass	
15.207	Conducted Emission	Pass	
15.203	Antenna Requirement	Pass	
NOTE1: N/A (Not Applicable) NOTE2: The report use radiated measurements in the restricted frequency bands. In addition, the radiated test is also performed to ensure the emissions emanating from the device cabinet also comply with the applicable limits.			

#### RELATED SUBMITTAL(S) / GRANT(S):

This submittal(s) (test report) is intended for FCC ID: 2AKHBFT102 filing to comply with Section 15.225 of the FCC Part 15, Subpart C Rules.

The system with mutil-fuction is compliance with Subpart B is authorized under a DOC procedure



## 4 TEST METHODOLOGY

### 4.1 GENERAL DESCRIPTION OF APPLIED STANDARDS

According to its specifications, the EUT must comply with the requirements of the following standards:  
FCC 47 CFR Part 2, Subpart J  
FCC 47 CFR Part 15, Subpart C

### 4.2 MEASUREMENT EQUIPMENT USED

#### 4.2.1 Conducted Emission Test Equipment

EQUIPMENT TYPE	MFR	MODEL NUMBER	SERIAL NUMBER	LAST CAL.
Test Receiver	Rohde & Schwarz	ESCI	26115-010-0027	May 28, 2016
L.I.S.N.	Rohde & Schwarz	ENV216	101161	May 28, 2016
50Ω Coaxial Switch	Anritsu	MP59B	6100175589	May 29, 2016
Voltage Probe	Rohde & Schwarz	ESH2-Z3	100122	May 29, 2016

#### 4.2.2 Radiated Emission Test Equipment

EQUIPMENT TYPE	MFR	MODEL NUMBER	SERIAL NUMBER	LAST CAL.
EMI Test Receiver	Rohde & Schwarz	ESU	1302.6005.26	May 29, 2016
Pre-Amplifier	HP	8447D	2944A07999	May 28, 2016
Pre-Amplifier	A.H.	PAM-0126	1415261	May 28, 2016
Bilog Antenna	Schwarzbeck	VULB9163	142	May 28, 2016
Loop Antenna	Schwarzbeck	FMZB 1519	1519-012	May 28, 2016
Horn Antenna	Schwarzbeck	BBHA 9170	BBHA9170399	May 29, 2016
Horn Antenna	Schwarzbeck	BBHA 9120	1178	May 29, 2016
Cable	Schwarzbeck	AK9513	ACRX1	May 29, 2016
Cable	Rosenberger	N/A	FP2RX2	May 29, 2016
Cable	Schwarzbeck	AK9513	CRPX1	May 29, 2016
Cable	Schwarzbeck	AK9513	CRRX2	May 29, 2016
Cable	H+B	0.5M SF104-26.5	289147/4	May 29, 2016
Cable	H+B	3M SF104-26.5	295838/4	May 29, 2016
Cable	H+B	6M SF104-26.5	295840/4	May 29, 2016

#### 4.2.3 Radio Frequency Test Equipment

EQUIPMENT TYPE	MFR	MODEL NUMBER	SERIAL NUMBER	LAST CAL.
Spectrum Analyzer	Agilent	E4407B	88156318	May 29, 2016
Signal Analyzer	Agilent	N9010A	My53470879	May 29, 2016
Power meter	Anritsu	ML2495A	0824006	May 29, 2016
Power sensor	Anritsu	MA2411B	0738172	May 29, 2016

**Remark:** Each piece of equipment is scheduled for calibration once a year.

### 4.3 DESCRIPTION OF TEST MODES

The EUT has been tested under its typical operating condition.

The EUT configuration for testing is installed on RF field strength measurement to meet the Commissions requirement and operating in a manner which intends to maximize its emission characteristics in a continuous normal application.

The Transmitter was operated in the normal operating mode. The TX frequency was fixed which was for the purpose of the measurements.

Test of channel included the lowest and middle and highest frequency to perform the test, then record on this report.

Those modulation ASK were used for all test.

Pre-defined engineering program for regulatory testing used to control the EUT for staying in continuous transmitting and receiving mode is programmed.

☒ Frequency and Channel list:

Channel	Frequency (MHz)	Channel	Frequency (MHz)	Channel	Frequency (MHz)
1	13.56				

☒ Test Frequency and Channel list:

Channel	Frequency (MHz)	Channel	Frequency (MHz)	Channel	Frequency (MHz)
1	13.56				

## 5 FACILITIES AND ACCREDITATIONS

### 5.1 FACILITIES

All measurement facilities used to collect the measurement data are located at

Bldg 69, Majialong Industry Zone District, Nanshan District, Shenzhen, China

The sites are constructed in conformance with the requirements of ANSI C63.7, ANSI C63.10 and CISPR Publication 22.

### 5.2 LABORATORY ACCREDITATIONS AND LISTINGS

Site Description

EMC Lab.

: Accredited by CNAS, 2016.10.24

The certificate is valid until 2022.10.28

The Laboratory has been assessed and proved to be in compliance with CNAS-CL01:2006 (identical to ISO/IEC 17025:2005)

The Certificate Registration Number is L2291.

Accredited by TUV Rheinland Shenzhen 2016.05.19

The Laboratory has been assessed according to the requirements ISO/IEC 17025.

Accredited by FCC, Valid until 2017/07/12

The Certificate Registration Number is 709623.

Accredited by Industry Canada, November 24, 2015

The Certificate Registration Number is 4480A.

Name of Firm

: EMTEK (SHENZHEN) CO., LTD.

Site Location

: Bldg 69, Majialong Industry Zone,  
Nanshan District, Shenzhen, Guangdong, China

## 6 TEST SYSTEM UNCERTAINTY

The following measurement uncertainty levels have been estimated for tests performed on the apparatus:

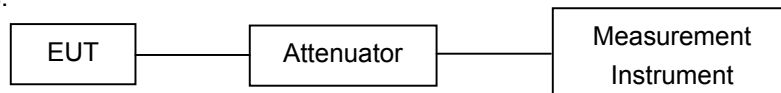
Parameter	Uncertainty
Radio Frequency	$\pm 1 \times 10^{-5}$
Conducted Emissions Test	$\pm 2.0\text{dB}$
Radiated Emission Test	$\pm 2.0\text{dB}$
Occupied Bandwidth Test	$\pm 1.0\text{dB}$
All emission, radiated	$\pm 3\text{dB}$
Temperature	$\pm 0.5$
Humidity	$\pm 3\%$

Measurement Uncertainty for a level of Confidence of 95%

## 7 SETUP OF EQUIPMENT UNDER TEST

### 7.1 RADIO FREQUENCY TEST SETUP 1

The NFC component's antenna ports(s) of the EUT are connected to the measurement instrument per an appropriate attenuator. The EUT is controlled by PC/software to emit the specified signals for the purpose of measurements.



### 7.2 RADIO FREQUENCY TEST SETUP 2

The test site semi-anechoic chamber has met the requirement of NSA tolerance 4 dB according to the standards: ANSI C63.10. The test distance is 3m. The setup is according to the requirements in ANSI C63.10-2013 and CAN/CSA-CEI/IEC CISPR 22.

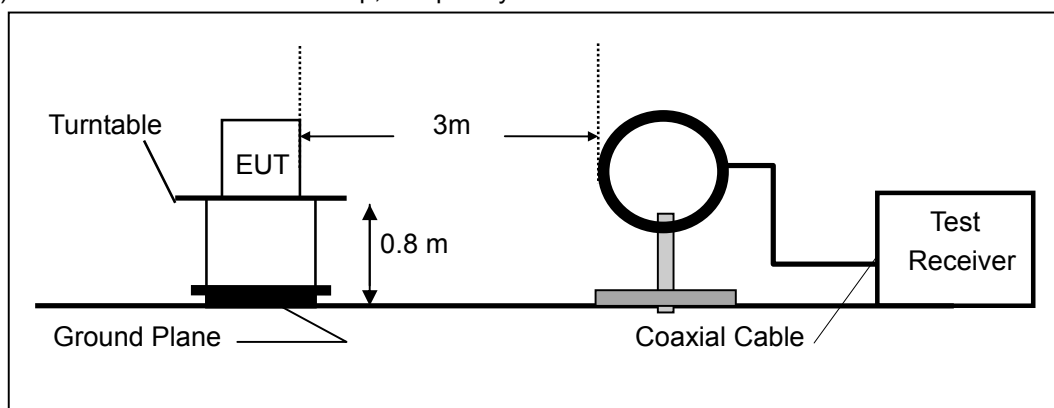
Below 30MHz :

The EUT is placed on a turntable 0.8 meters above the ground in the chamber, 3 meter away from the antenna (loop antenna). The Antenna should be positioned with its plane vertical at the specified distance from the EUT and rotated about its vertical axis for maximum response at each azimuth about the EUT. The center of the loop shall be 1 m above the ground. For certain applications, the loop antenna plane may also need to be positioned horizontally at the specified distance from the EUT.

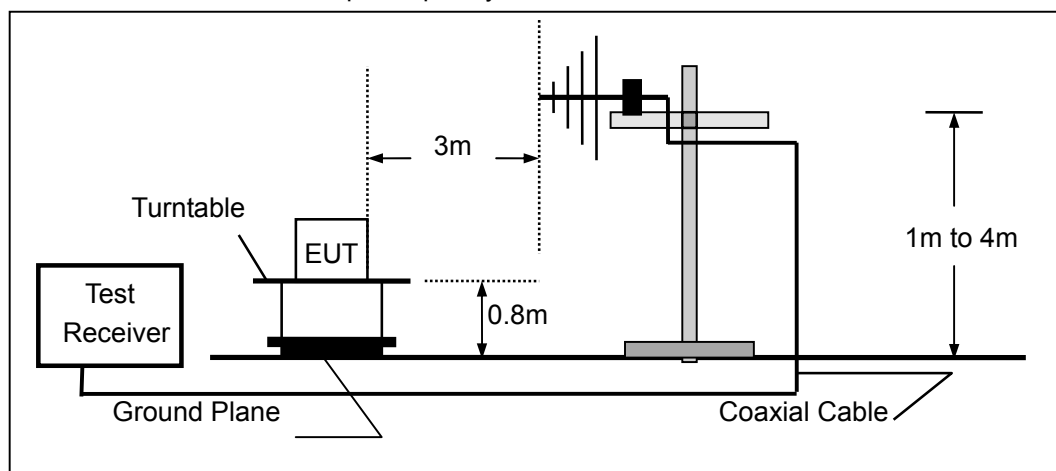
Above 30MHz :

The EUT is placed on a turntable 0.8 meters above the ground in the chamber, 3 meter away from the antenna. The maximal emission value is acquired by adjusting the antenna height, polarisation and turntable azimuth. Normally, the height range of antenna is 1 m to 4 m, the azimuth range of turntable is 0° to 360°, and the receive antenna has two polarizations Vertical (V) and Horizontal (H).

(a) Radiated Emission Test Set-Up, Frequency Below 30MHz



(b) Radiated Emission Test Set-Up, Frequency Below 1000MHz

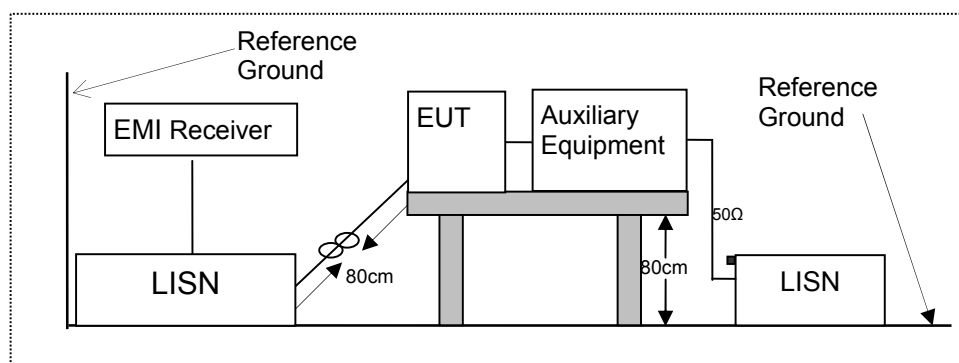


### 7.3 CONDUCTED EMISSION TEST SETUP

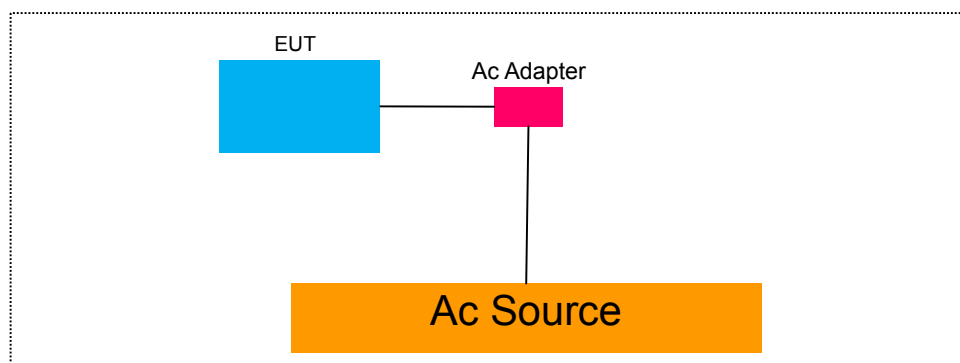
The mains cable of the EUT (maybe per AC/DC Adapter) must be connected to LISN. The LISN shall be placed 0.8 m from the boundary of EUT and bonded to a ground reference plane for LISN mounted on top of the ground reference plane. This distance is between the closest points of the LISN and the EUT. All other units of the EUT and associated equipment shall be at least 0.8m from the LISN.

Ground connections, where required for safety purposes, shall be connected to the reference ground point of the LISN and, where not otherwise provided or specified by the manufacturer, shall be of same length as the mains cable and run parallel to the mains connection at a separation distance of not more than 0.1 m.

According to the requirements in ANSI C63.10-2013 Conducted emissions from the EUT measured in the frequency range between 0.15 MHz and 30 MHz using CISPR Quasi-Peak and average detector mode.



#### 7.4 BLOCK DIAGRAM CONFIGURATION OF TEST SYSTEM



#### 7.5 SUPPORT EQUIPMENT

Item	Equipment	Mfr/Brand	Model/Type No.	FCC ID	Series No.	Note
N/A	N/A	N/A	N/A	N/A	N/A	N/A

**Notes:**

1. All the equipment/cables were placed in the worst-case configuration to maximize the emission during the test.
2. Grounding was established in accordance with the manufacturer's requirements and conditions for the intended use.

## 8 TEST REQUIREMENTS

### 8.1 OCCUPIED BANDWIDTH

#### 8.1.1 Applicable Standard

According to FCC Part 2.1049

#### 8.1.2 Conformance Limit

No limit requirement.

#### 8.1.3 Test Configuration

Test according to clause 7.1 radio frequency test setup

#### 8.1.4 Test Procedure

The EUT was operating in transmit mode and controlled its channel. Printed out the test result from the spectrum by hard copy function.

The RF output of EUT was connected to the spectrum analyzer by RF cable and attenuator. The path loss was compensated to the results for each measurement.

Set to the maximum power setting and enable the EUT transmit continuously

Set RBW = 1% occupied bandwidth.

Set the video bandwidth (VBW) = 3 times RBW.

Set Span= approximately 2 to 3 times the occupied bandwidth

Set Detector = Peak.

Set Trace mode = max hold.

Set Sweep = auto couple.

The EUT should be transmitting at its maximum data rate. Allow the trace to stabilize. Use the marker-to-peak function to set the marker to the peak of the emission. Use the marker-delta function to measure 99% down one side of the emission. Reset the markerdelta function, and move the marker to the other side of the emission, until it is (as close as possible to) even with the reference marker level. The marker-delta reading at this point is the 99% bandwidth of the emission.

If this value varies with different modes of operation (e.g., data rate, modulation format, etc.), repeat this test for each variation.

Measure and record the results in the test report.

#### 8.1.5 Test Results

Temperature :	28	Test Date :	October 20, 2016
Humidity :	65 %	Test By:	King Kong

Modulation Mode	Channel Number	Channel Frequency (MHz)	Measurement Bandwidth (kHz)	Limit (kHz)	Verdict
ASK	1	13.56	599.65	N/A	PASS
Note: N/A (Not Applicable)					



Test Model	Occupied Bandwidth Channel 0: 13.56MHz ASK Modulation
------------	---



## 8.2 FREQUENCY STABILITY

### 8.2.1 Applicable Standard

According to FCC Part 2.1055

### 8.2.2 Conformance Limit

According to part 15.225(e), The frequency tolerance of the carrier signal shall be maintained within  $\pm 0.01\%$  of the operating frequency over a temperature variation of  $-20$  degrees to  $+50$  degrees C at normal supply voltage, and for a variation in the primary supply voltage from 85% to 115% of the rated supply voltage at a temperature of 20 degrees C. For battery operated equipment, the equipment tests shall be performed using a new battery.

### 8.2.3 Test Configuration

Test according to clause 7.1 radio frequency test setup

### 8.2.4 Test Procedures

Connect the EUT to frequency analyzer via the antenna connector.

EUT was placed at temperature chamber and connected to an external power supply.

Temperature and voltage condition shall be tested to confirm frequency stability.

(a) Frequency measurements shall be made at the extremes of the specified temperature range and at intervals of not more than  $10^{\circ}$  centigrade through the range. A period of time sufficient to stabilize all of the components of the oscillator circuit at each temperature level shall be allowed prior to frequency measurement. The short-term transient effects on the frequency of the transmitter due to keying (except for broadcast transmitters) and any heating element cycling normally occurring at each ambient temperature level also shall be shown. Only the portion or portions of the transmitter containing the frequency determining and stabilizing circuitry need be subjected to the temperature variation test.

(b) The frequency stability shall be measured with variation of primary supply voltage as follows:

(1) Vary primary supply voltage from 85 to 115 percent of the nominal value for other than hand carried battery equipment.

(2) For hand carried, battery powered equipment, reduce primary supply voltage to the battery operating end point, which shall be specified by the manufacturer.

### 8.2.5 Test Results

Operation Mode	Channel Number	Test Condition		Channel Frequency (MHz)	Freq.Dev. (Hz)	Deviation (ppm)	Limit (ppm)
		Voltage (V)	Temp ( )				
ASK	CH1	Vnom	-20	13.56	98.11	7.24	10
			-10	13.56	113.36	8.36	10
			0	13.56	104.06	7.67	10
			10	13.56	94.97	7.00	10
			20	13.56	96.34	7.10	10
			30	13.56	98.84	7.29	10
			40	13.56	80.31	5.92	10
			50	13.56	89.25	6.58	10
		85% Vnom	20	13.56	88.49	6.53	10
		115% Vnom	20	13.56	84.66	6.24	10
VERDICT				PASS			

### 8.3 RADIATED SPURIOUS EMISSION

#### 8.3.1 Applicable Standard

According to FCC Part 15.225, 15.209 and 15.205.

#### 8.3.2 Conformance Limit

Field Strength of Fundamental Emissions and Spectrum Mask					
Emissions	(uV/m)@30m	(dBuV/m)@30m	(dBuV/m)@10m	(dBuV/m)@3m	(dBuV/m)@1m
Fundamental	15848	84.0	103.1	124.0	143.1

Quasi peak measurement of the fundamental.

Spectrum Mask					
Freq. of Emission (MHz)	(uV/m)@30m	(dBuV/m)@30m	(dBuV/m)@10m	(dBuV/m)@3m	(dBuV/m)@1m
1.705~13.110	30	29.5	48.6	69.5	88.6
13.110~13.410	106	40.5	59.6	80.5	99.6
13.410~13.553	334	50.5	69.6	90.5	109.6
13.553~13.567	15848	84.0	103.1	124.0	143.1
13.567~13.710	334	50.5	69.6	90.5	109.6
13.710~14.010	106	40.5	59.6	80.5	99.6
14.010~30.000	30	29.5	48.6	69.5	88.6

According to FCC Part15.205, Restricted bands

MHz	MHz	MHz	GHz
0.090-0.110	16.42-16.423	399.9-410	4.5-5.15
10.495-0.505	16.69475-16.69525	608-614	5.35-5.46
2.1735-2.1905	16.80425-16.80475	960-1240	7.25-7.75
4.125-4.128	25.5-25.67	1300-1427	8.025-8.5
4.17725-4.17775	37.5-38.25	1435-1626.5	9.0-9.2
4.20725-4.20775	73-74.6	1645.5-1646.5	9.3-9.5
6.215-6.218	74.8-75.2	1660-1710	10.6-12.7
6.26775-6.26825	123-138	2200-2300	14.47-14.5
8.291-8.294	149.9-150.05	2310-2390	15.35-16.2
8.362-8.366	156.52475-156.52525	2483.5-2500	17.7-21.4
8.37625-8.38675	156.7-156.9	2690-2900	22.01-23.12
8.41425-8.41475	162.0125-167.17	3260-3267	23.6-24.0
12.29-12.293	167.72-173.2	3332-3339	31.2-31.8
12.51975-12.52025	240-285	3345.8-3358	36.43-36.5
12.57675-12.57725	322-335.4	3600-4400	(2)
13.36-13.41			

According to FCC Part15.205, the level of any transmitter spurious emission in Restricted bands shall not exceed the level of the emission specified in the following table

Restricted Frequency(MHz)	Field Strength (uV/m)	Field Strength (dBuV/m)	Measurement Distance
0.009-0.490	2400/F(KHz)	48.5 - 13.8	300
0.490-1.705	24000/F(KHz)	33.8 - 23.0	30
1.705-30	30	29.5	30
30-88	100	40.0	3
88-216	150	43.5	3
216-960	200	46.0	3
Above 960	500	54.0	3

### 8.3.3 Test Configuration

Test according to clause 7.2 radio frequency test setup

### 8.3.4 Test Procedure

This test is required for any spurious emission that falls in a Restricted Band, as defined in Section 15.205. It must be performed with the highest gain of each type of antenna proposed for use with the EUT. Use the following spectrum analyzer settings:

The EUT was placed on a turn table which is 0.8m above ground plane.

Maximum procedure was performed on the highest emissions to ensure EUT compliance.

Span = wide enough to fully capture the emission being measured

RBW = 100 kHz for  $f < 1$  GHz(30MHz to 1GHz), 200Hz for  $f < 150$ KHz(9KHz to 150KHz), 9KHz for  $f < 30$ MHz(150KHz to 30KHz)

VBW  $\geq$  RBW

Sweep = auto

Detector function = peak

Trace = max hold

Follow the guidelines in ANSI C63.10-2013 with respect to maximizing the emission by rotating the EUT, measuring the emission while the EUT is situated in three orthogonal planes (if appropriate), adjusting the measurement antenna height and polarization, etc. A pre-amp and a high pass filter are required for this test, in order to provide the measuring system with sufficient sensitivity. Allow the trace to stabilize. The peak reading of the emission, after being corrected by the antenna factor, cable loss, pre-amp gain, etc., is the peak field strength, which must comply with the limit specified in Section 15.35(b). Submit this data.

Now set the VBW to 10 Hz, while maintaining all of the other instrument settings. This peak level, once corrected, must comply with the limit specified in Section 15.209. If the dwell time per channel of the hopping signal is less than 100 ms, then the reading obtained with the 10 Hz VBW may be further adjusted by a "duty cycle correction factor", derived from  $20\log(\text{dwell time}/100 \text{ ms})$ , in an effort to demonstrate compliance with the 15.209 limit. Submit this data.

Repeat above procedures until all frequency measured was complete.

### 8.3.5 Test Results

■ Spurious Emission below 150kHz (9KHz to 150kHz)

Temperature:	24	Test Date:	October 20, 2016
Humidity:	53 %	Test By:	KK
Test mode:	TX Mode		

Freq. (MHz)	Ant.Pol. H/V	Emission Level (dBuV/m)	Limit 3m (dBuV/m)	Over (dB)	Result
--	--	--	--	--	--
<b>Note:</b> (1)Emission Level= Reading Level+Probe Factor +Cable Loss. (2) Data of measurement within this frequency range shown “ -- ” in the table above means the reading of emissions are attenuated more than 20dB below the permissible limits or the field strength is too small to be measured.					

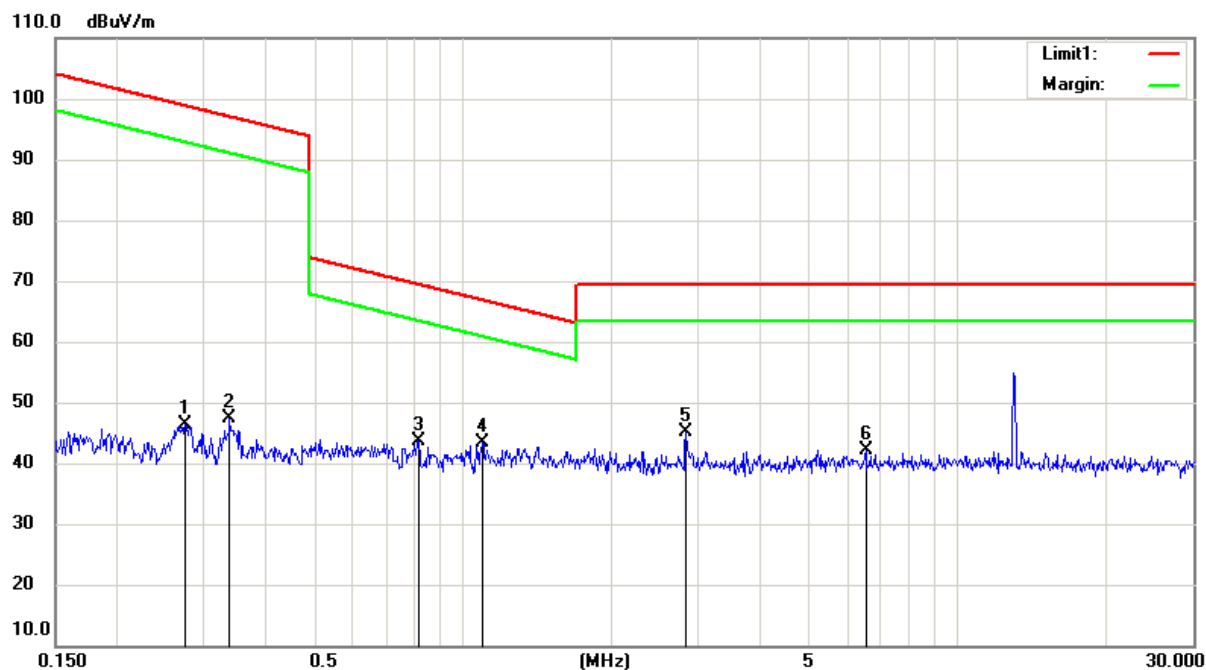
Note: the amplitude of spurious emission that is attenuated by more than 20dB below the permissible limit has no need to be reported.

Distance extrapolation factor =  $40\log(\text{Specific distance/ test distance})$  ( dB);

Limit line=Specific limits(dBuV) + distance extrapolation factor

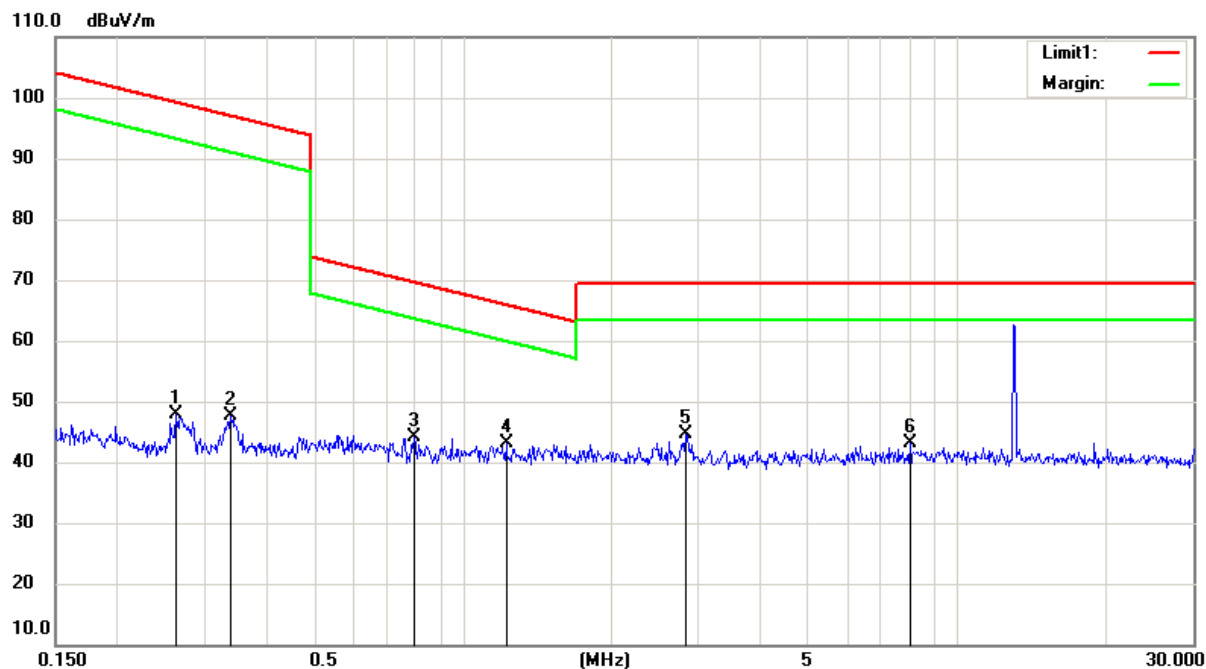
■ Spurious Emission below 30MHz (150KHz to 30MHz)

Test Model	Spurious Emission below 30MHz (150KHz to 30MHz)		
	TX Mode	Polarity: H	
	Temperature: 24	Test By: King Kong	
	Humidity: 53 %	Test Date: October 20, 2016	



Freq. (MHz)	Ant.Pol. H/V	Emission Level (dBuV/m)	Limit 3 (dBuV/m)	Over (dB)	Result
--	--	--	--	--	--
--	--	--	--	--	--
--	--	--	--	--	--
--	--	--	--	--	--
--	--	--	--	--	--
<b>Note:</b> (1)Emission Level= Reading Level+Probe Factor +Cable Loss. (2) Data of measurement within this frequency range shown "--" in the table above means the reading of emissions are attenuated more than 20dB below the permissible limits or the field strength is too small to be measured.					

Test Model	Spurious Emission below 30MHz (150KHz to 30MHz)		
	TX Mode		Polarity: V
	Temperature: 24		Test By: King Kong
	Humidity: 53 %		Test Date: October 20, 2016

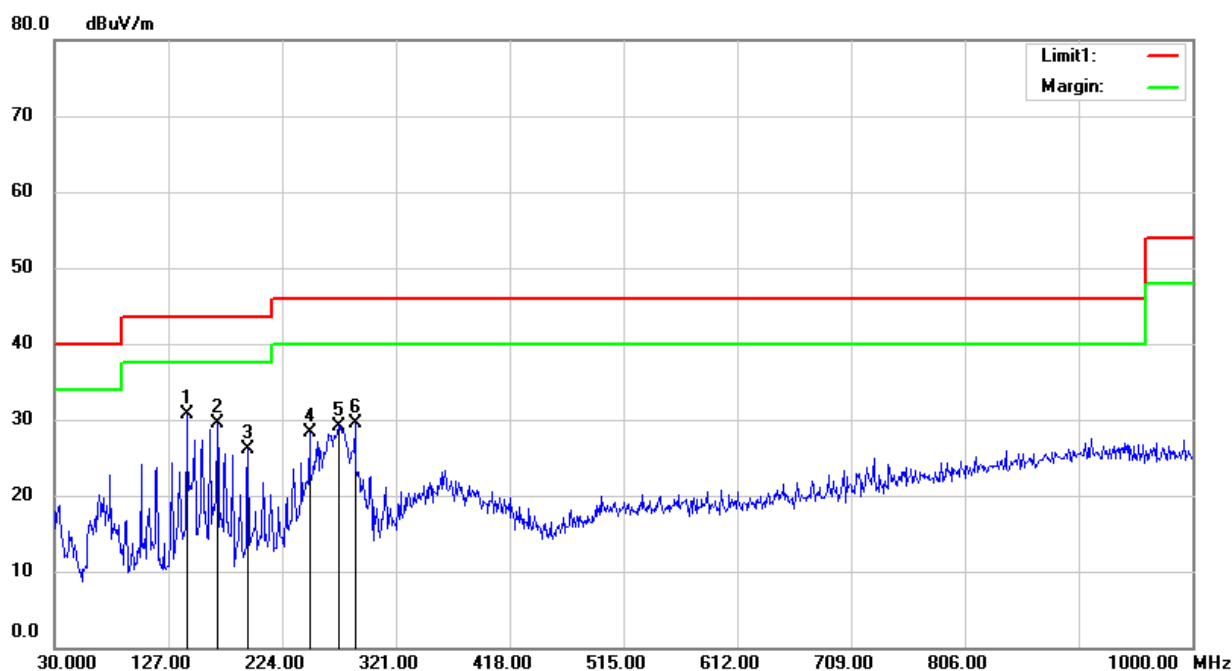


Freq. (M z)	Ant.Po . H/V	Emission Level (dBuV/m)	Limit 3m (dBuV/m)	Over (dB)	Result
--	--	--	--	--	--
--	--	--	--	--	--
--	--	--	--	--	--
--	--	--	--	--	--
--	--	--	--	--	--
--	--	--	--	--	--

**Note:** (1)Emission Level= Reading Level+Probe Factor +Cable Loss.  
(2) Data of measurement within this frequency range shown “ -- ” in the table above means the reading of emissions are attenuated more than 20dB below the permissible limits or the field strength is too small to be measured.

■ Spurious Emission below 1GHz (30MHz to 1GHz)

Spurious Emission below 1GHz (30MHz to 1GHz)		
Test Model	ASK	Polarity: H
	13.56MHz	Test By: King Kong
	Temperature: 24	Test Date: October 20, 2016
	Humidity: 53 %	

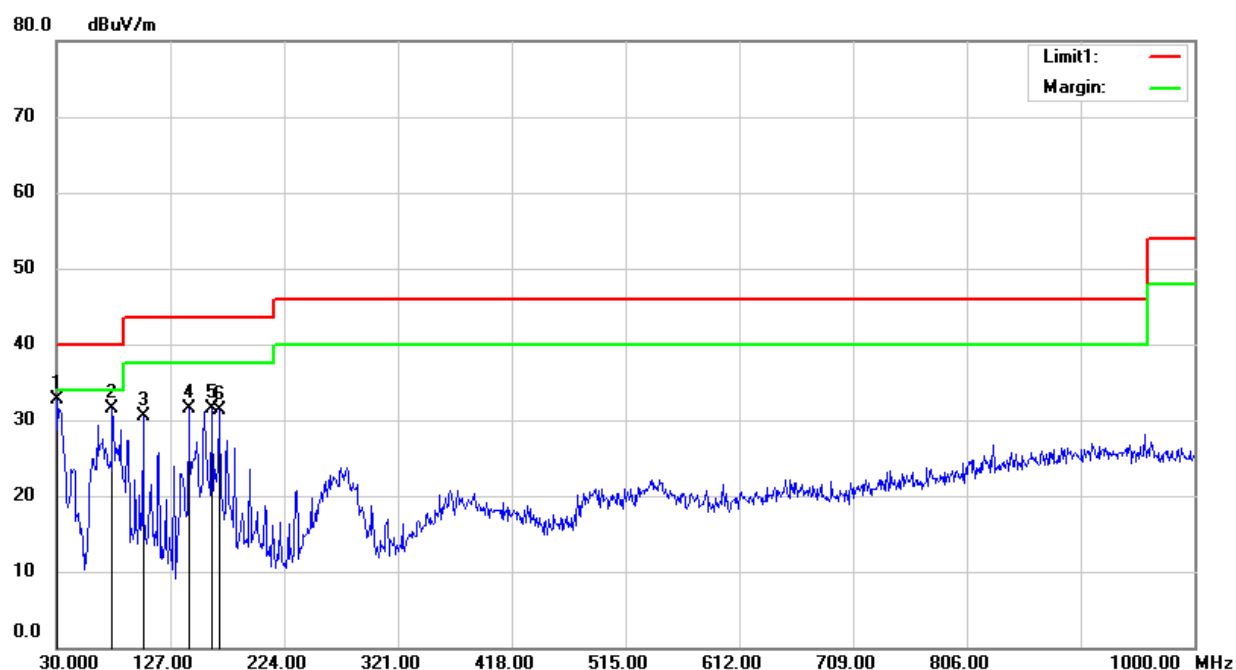


Freq. (MHz)	Ant.Pol. /V	Emission Level(dBuV/m)	Limit 3m(dBuV/m)	Over(dB)
142.52	H	30.72	43.50	-12.78
168.71	H	29.50	43.50	-14.00
194.90	H	26.12	3.50	-17.38
247.28	H	28.31	46.00	-17.69
272.50	H	29.19	46.00	-16.81
286.08	H	29.43	46.00	-16.57

**Note:** (1) Emission Level= Reading Level+Probe Factor +Cable Loss.  
(2) Data of measurement within this frequency range shown "--" in the table above means the reading of emissions are attenuated more than 20dB below the permissible limits or the field strength is too small to be measured.



Spurious Emission below 1GHz (30MHz to 1GHz)		
Test Model	ASK	Polarity: V
	13.56MHz	Test By: King Kong
	Temperature: 24	Test Date: October 20, 2016
	Humidity: 53 %	



Freq. (MHz)	Ant.Pol. H/V	Emission Level(dBuV/m)	Limit 3m(dBuV/m)	Over(dB)
30.00	V	32.73	40.00	-7.27
77.53	V	31.48	40.00	-8.52
103.72	V	30.50	43.50	-13.00
142 52		31.41	43.50	-12.09
161.92	V	31.47	43.50	-12.03
168.71	V	31.27	43.50	-12.23
<b>Note:</b> (1)Emission Level= Reading Level+Probe Factor +Cable Loss. (2) Data of measurement within this frequency range shown "--" in the table above means the reading of emissions are attenuated more than 20dB below the permissible limits or the field strength is too small to be measured.				

■ Field Strength of Fundamental Emissions and Spectrum Mask

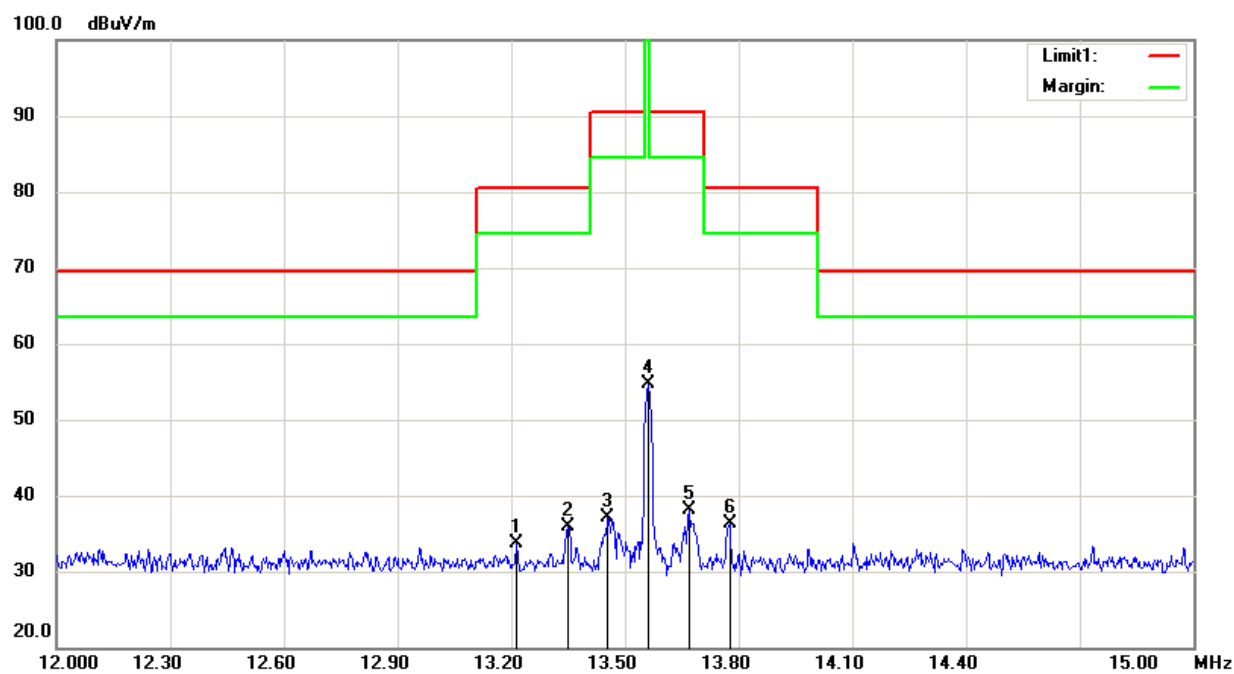
Field Strength of Fundamental Emissions and Spectrum Mask		
Test Model	ASK	Polarity: H
	13.56MHz	Test By: King Kong
	Temperature: 24	Test Date: October 20, 2016
	Humidity: 53 %	



Freq. (MHz)	Ant.Pol. H/V	Emission Level (dBuV/m)	Limit 3m (dBuV/m)	Over (dB)	Result
12.50	H	35.95	69.50	-33.55	Pass
12.92	H	41.91	69.50	-27.59	Pass
13.35	H	50.03	80.50	-30.47	Pass
13.56	H	60.53	124.00	-63.47	Pass
13.77	H	45.33	80.50	-35.17	Pass
12.50	H	35.95	69.50	-33.55	Pass

**Note:** (1) Emission Level = Reading Level + Probe Factor + Cable Loss.  
 (2) Data of measurement within this frequency range shown "--" in the table above means the reading of emissions are attenuated more than 20dB below the permissible limits or the field strength is too small to be measured.

Test Model	Field Strength of Fundamental Emissions and Spectrum Mask		
	ASK	Polarity: V	
	13.56MHz	Test By: King Kong	
	Temperature: 24	Test Date: October 20, 2016	
	Humidity: 53 %		



Freq. (MHz)	Ant.Pol. H/V	Em ssion Level (dBuV/m)	Limit 3m (dBuV/m)	Over (dB)	Result
13.22	V	33.73	80.50	-46.77	Pass
13.35	V	35.94	80.50	-44.56	Pass
13.46	V	37.16	90.50	-53.34	Pass
13.56	V	54.67	124.00	-69.33	Pass
13.67	V	38.12	90.50	-52.38	Pass
13.78	V	36.21	80.50	-44.29	Pass

**Note:** (1) Emission Level= Reading Level+Probe Factor +Cable Loss.  
(2) Data of measurement within this frequency range shown "--" in the table above means the reading of emissions are attenuated more than 20dB below the permissible limits or the field strength is too small to be measured.

## 8.4 CONDUCTED EMISSION TEST

### 8.4.1 Applicable Standard

According to FCC Part 15.207(a)

### 8.4.2 Conformance Limit

Conducted Emission Limit		
Frequency(MHz)	Quasi-peak	Average
0.15-0.5	66-56	56-46
0.5-5.0	56	46
5.0-30.0	60	50
Note: 1. The lower limit shall apply at the transition frequencies 2. The limit decreases in line with the logarithm of the frequency in the range of 0.15 to 0.50MHz.		

### 8.4.3 Test Configuration

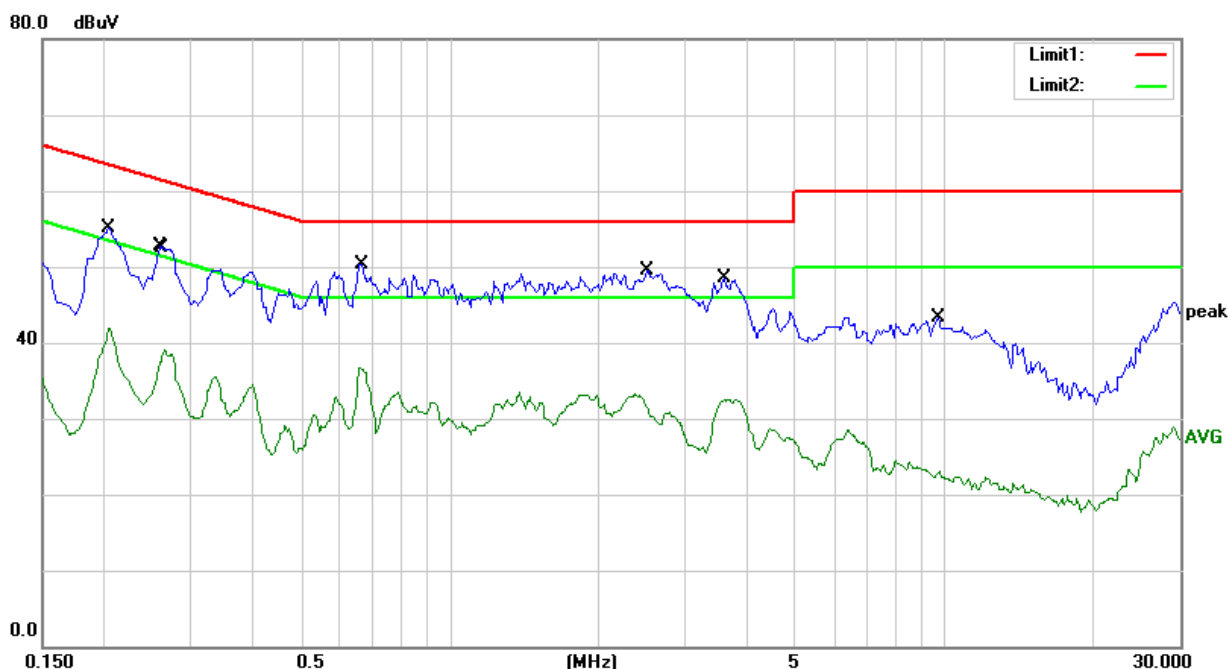
Test according to clause 7.3 conducted emission test setup

### 8.4.4 Test Procedure

The EUT was placed on a table which is 0.8m above ground plane.  
 Maximum procedure was performed on the highest emissions to ensure EUT compliance.  
 Repeat above procedures until all frequency measured were complete.

### 8.4.5 Test Results

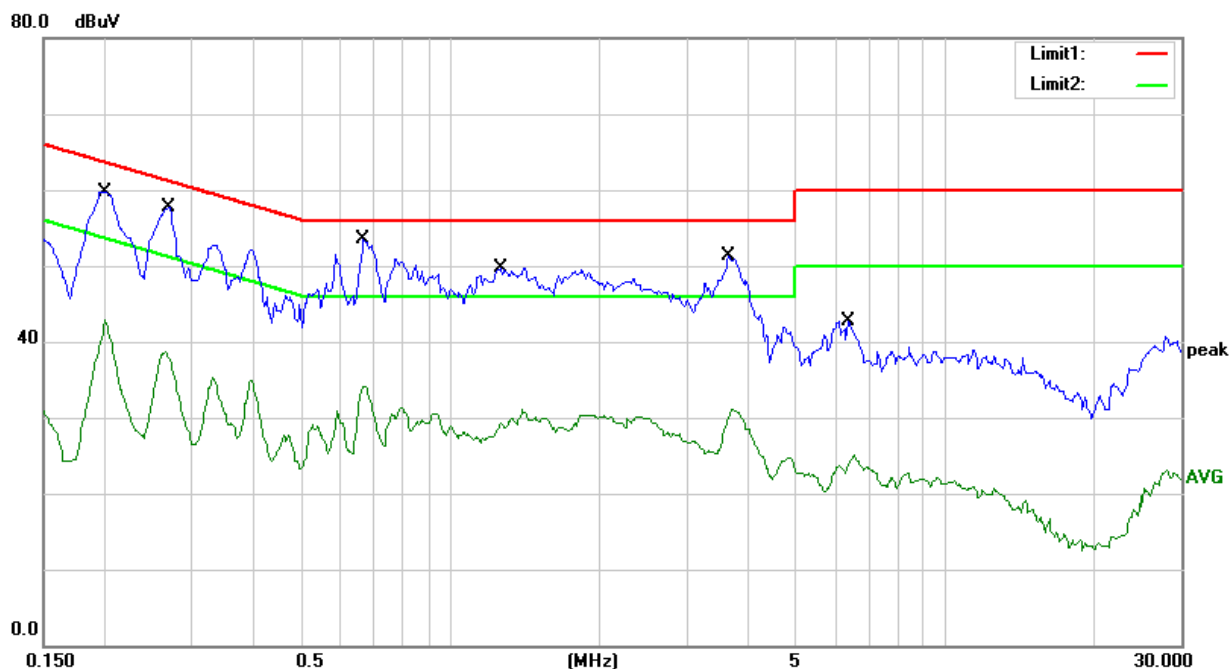
Test Model	Conducted Emissions Test		Test Line: Line		
	TX mode			Test By: King Kong	
	Temperature: 24				Test Date: October 20, 2016
	Humidity: 53 %				



Test Line	Frequency MHz	Emission Level QP dB(μV)	Emission Level AV dB(μV)	Limits QP dB(μV)	Limits AV dB(μV)	Over QP dB(μV)	Over AV dB(μV)
Line	0.21	55.09	41.99	63.41	53.41	-8.32	-11.42
	0.27	52.69	39.05	61.43	51.27	-8.74	-12.22
	0.67	50.26	36.65	56.00	46.00	-5.74	-9.35
	2.51	49.57	33.46	56.00	46.00	-6.43	-12.54
	3.59	48.44	32.49	56.00	46.00	-7.56	-13.51
	9.71	43.28	28.58	60.00	50.00	-16.72	-21.42

**Note:** (2) Emission Level = Reading Level + Factor + Cable Loss.  
(3) Data of measurement within this frequency range shown “ -- ” in the table above means the reading of emissions are attenuated more than 20dB below the permissible limits or the field strength is too small to be measured.

Test Model	Conducted Emissions Test		Test Line: Neutral	
	TX mode			Test By: King Kong
	Temperature: 24			
	Humidity: 53 %			



Test Line	Frequency MHz	Emission Level QP dB(μV)	Emission Level AV dB(μV)	Limits QP dB(μV)	Limits AV dB(μV)	Over QP dB(μV)	Over AV dB(μV)
Neutral	0.20	56.23	42.91	63.61	53.61	-7.38	-10.70
	0.27	55.23	38.63	61.12	51.12	-5.89	-12.49
	0.67	50.14	34.07	56.00	46.00	-5.86	-11.93
	1.27	47.63	31.19	56.00	46.00	-8.37	-14.81
	3.65	50.23	31.07	56.00	46.00	-5.77	-14.93
	6.37	42.74	25.06	60.00	50.00	-17.26	-24.94
<b>Note:</b> (2)Emission Level= Reading Level+ Factor +Cable Loss. (3) Data of measurement within this frequency range shown “ -- ” in the table above means the reading of emissions are attenuated more than 20dB below the permissible limits or the field strength is too small to be measured.							

## 9 ANTENNA APPLICATION

### 9.1.1 Antenna Requirement

Standard	Requirement
FCC CRF Part 15.203	An intentional radiator shall be designed to ensure that no antenna other than that furnished by the responsible party shall be used with the device. The use of a permanently attached antenna or of an antenna that uses a unique coupling to the intentional radiator shall be considered sufficient to comply with the provisions of this section. The manufacturer may design the unit so that a broken antenna can be replaced by the user, but the use of a standard antenna jack or electrical connector is prohibited. This requirement does not apply to carrier current devices or to devices operated under the provisions of §15.211, §15.213, §15.217, §15.219, or §15.221. Further, this requirement does not apply to intentional radiators that must be professionally installed, such as perimeter protection systems and some field disturbance sensors, or to other intentional radiators which, in accordance with §15.31(d), must be measured at the installation site. However, the installer shall be responsible for ensuring that the proper antenna is employed so that the limits in this part are not exceeded.

For intentional device, according to FCC 47 CFR Section 15.203, an intentional radiator shall be designed to ensure that no antenna other than that furnished by the responsible party shall be used with the device.

### 9.1.2 Result

PASS.

The EUT has 1 antenna: a FPC Antenna for BT3.0 with classic model.

The EUT has 1 antenna: a FPC Antenna for BT4.0 with BLE model.

The EUT has 1 antenna: a FPC Antenna for wifi 2.4G.

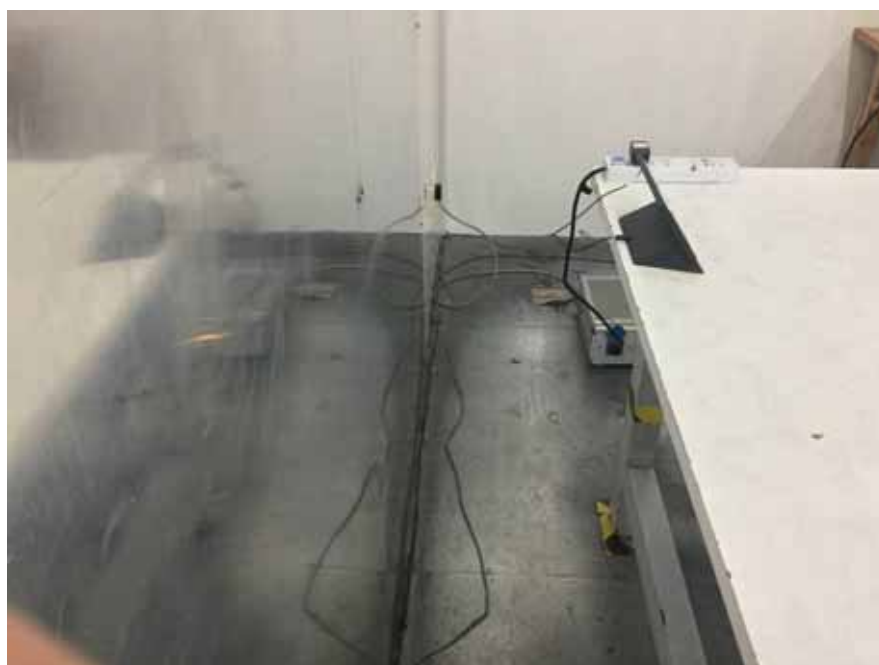
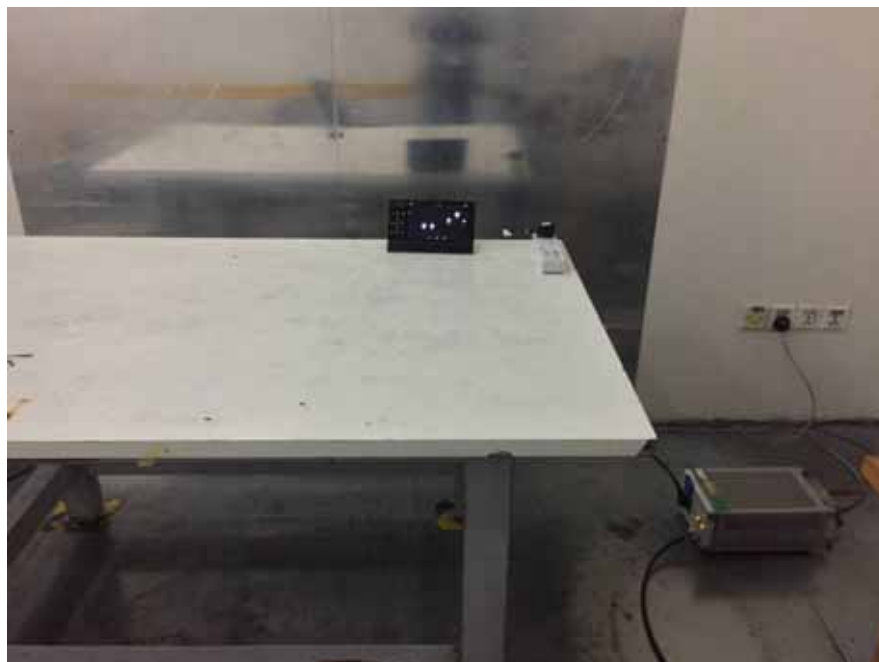
The EUT has 1 antenna: a Induction coil Antenna for NFC.

Note: ☒ Antenna use a permanently attached antenna which is not replaceable.  
☐ Not using a standard antenna jack or electrical connector for antenna replacement  
☐ The antenna has to be professionally installed (please provide method of installation)

which in accordance to section 15.203, please refer to the internal photos.

## 10 PHOTOS OF TEST SETUP

### ■ For Conducted Emission

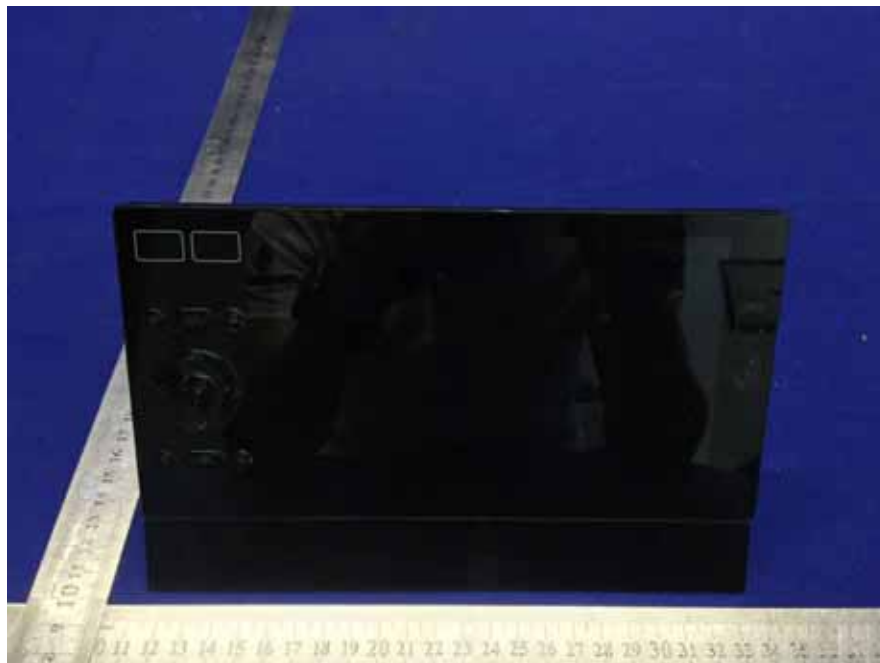


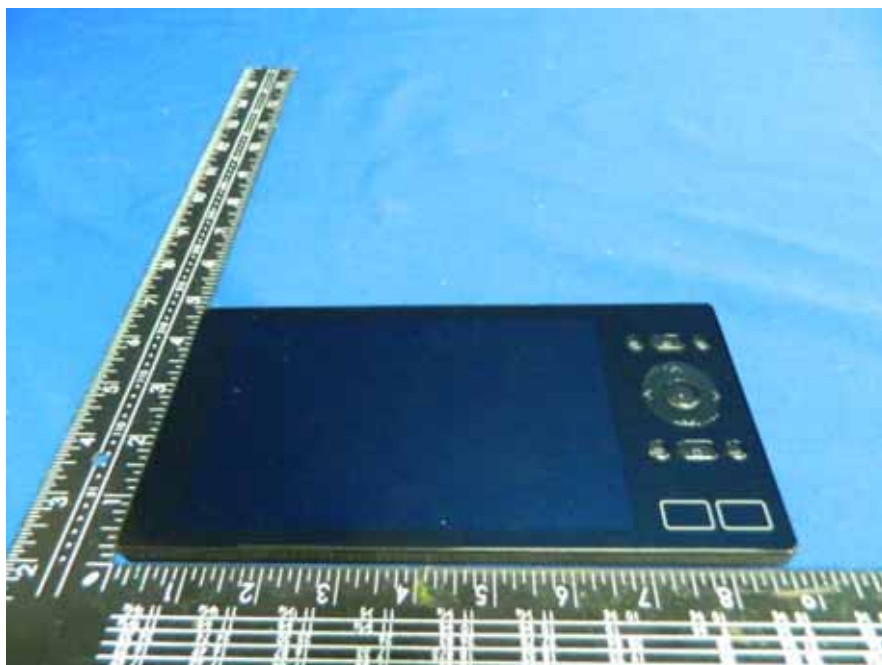
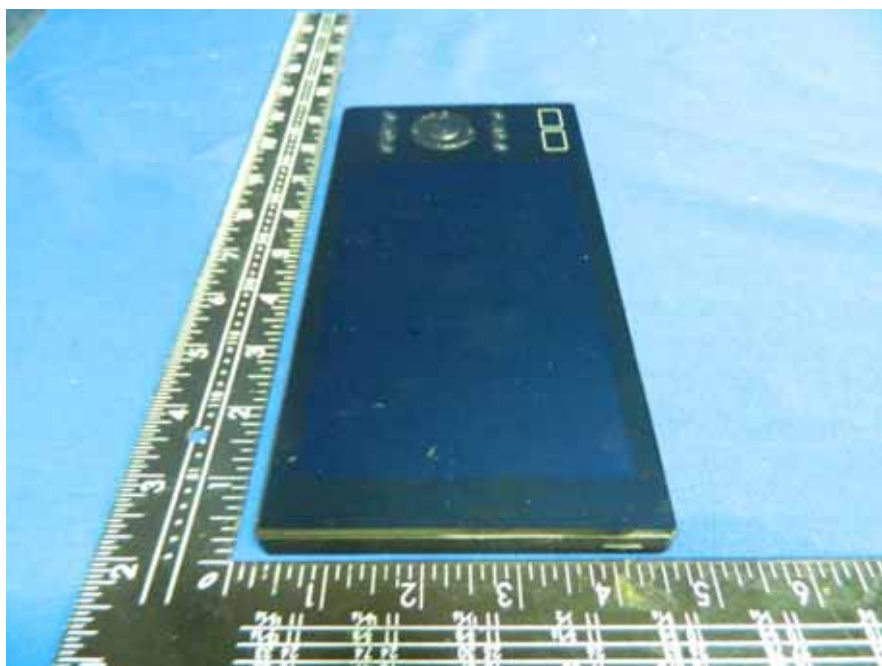


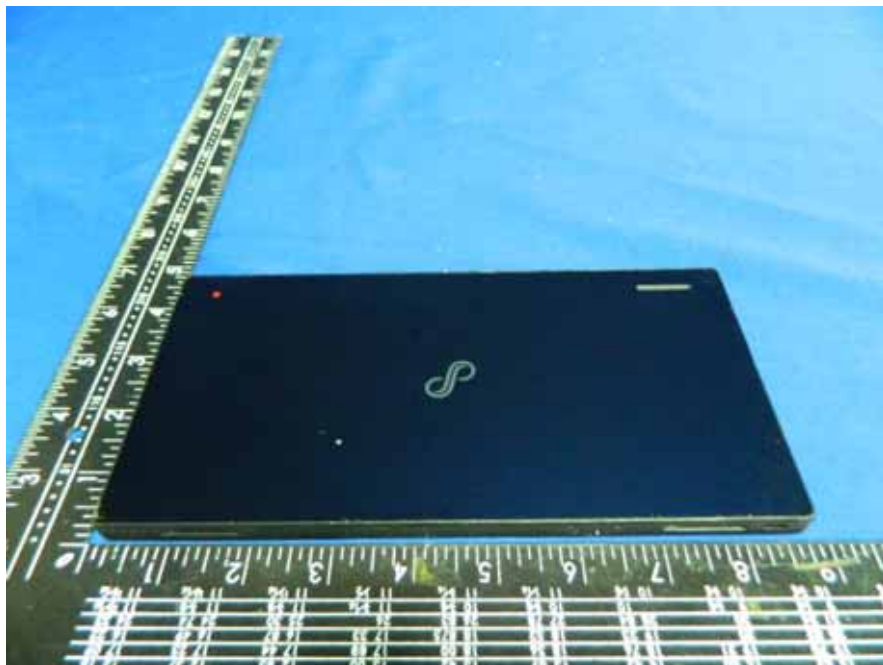
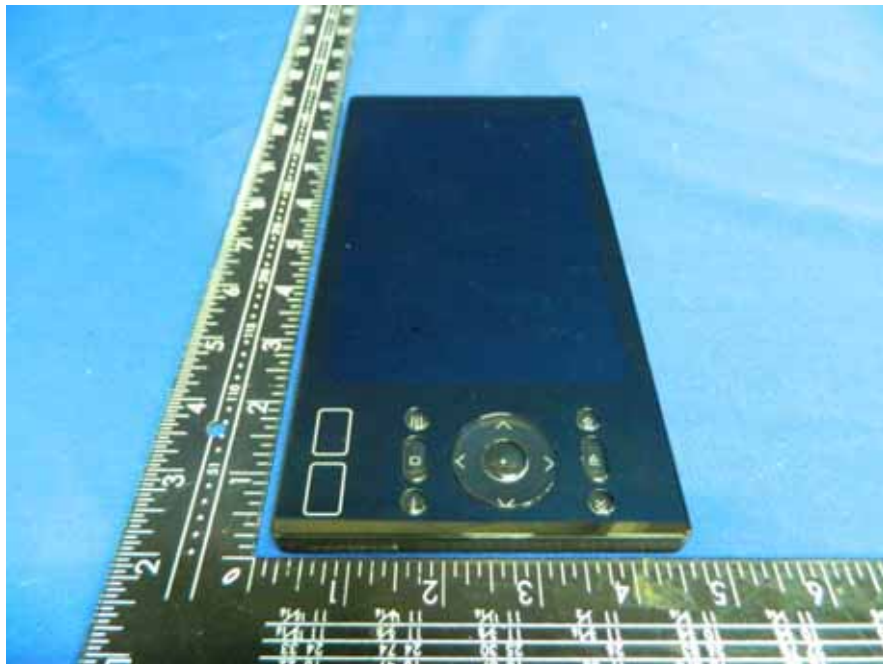
■ For Radiated Spurious Emission

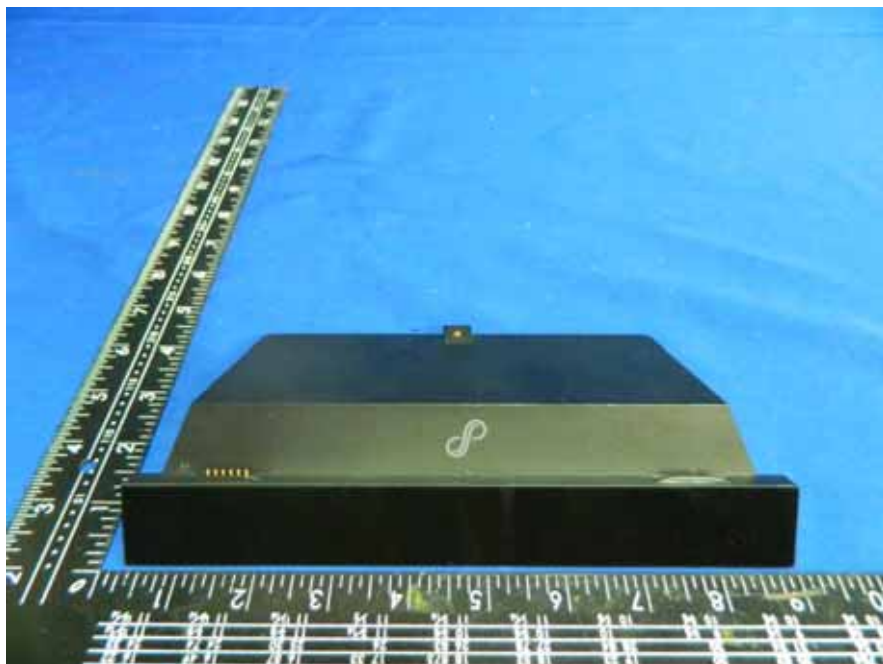


## 11 PHOTOS OF THE EUT

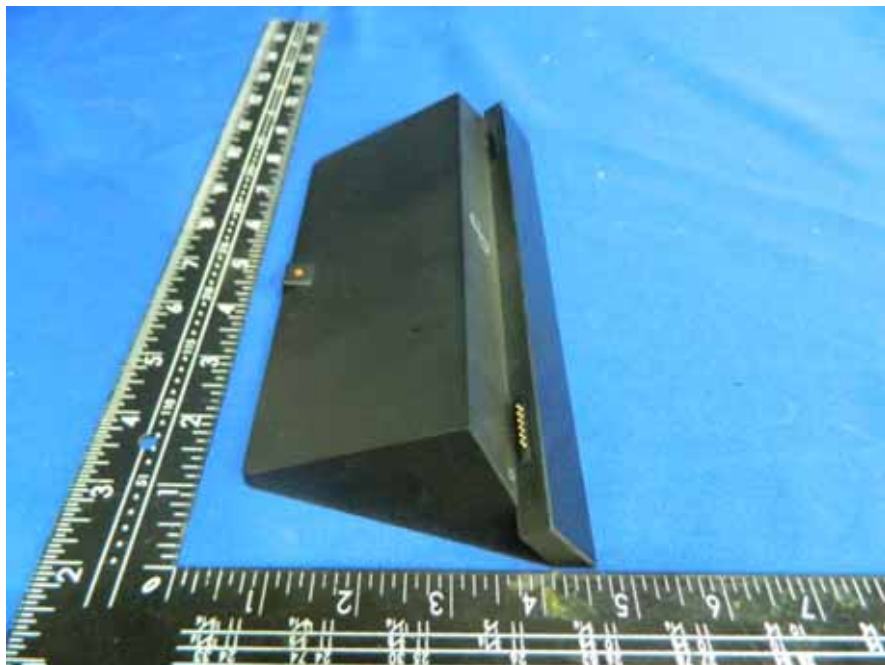
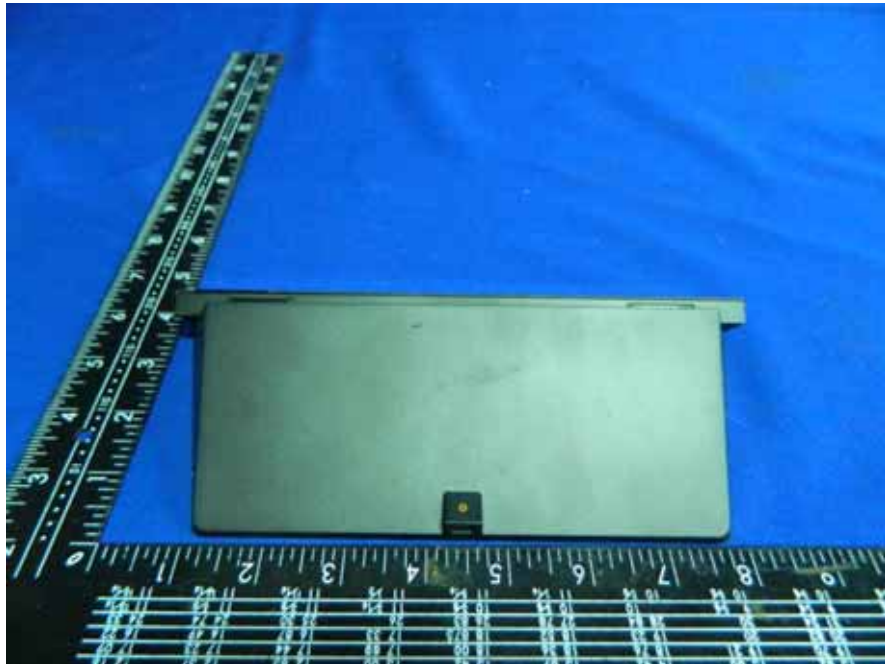


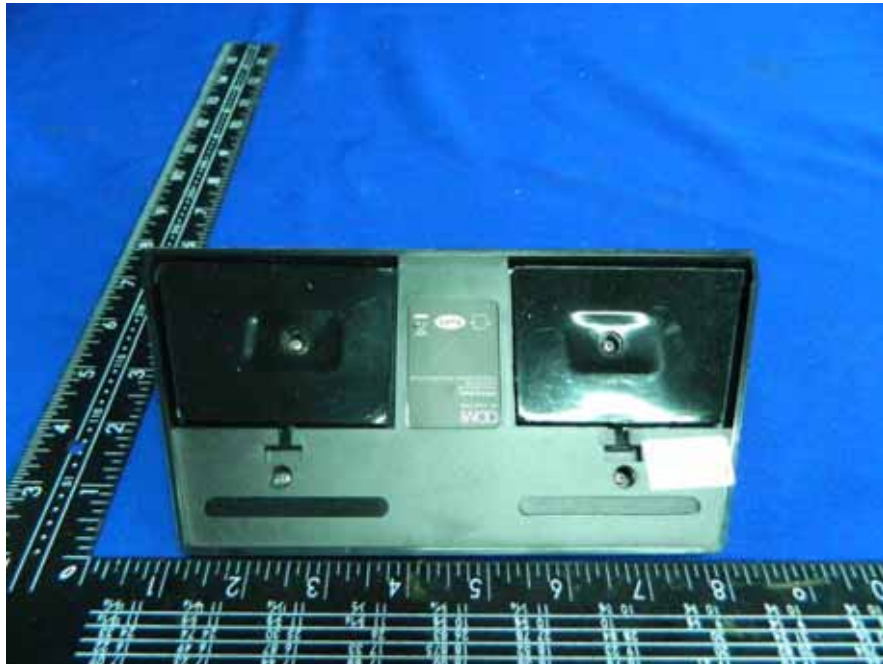


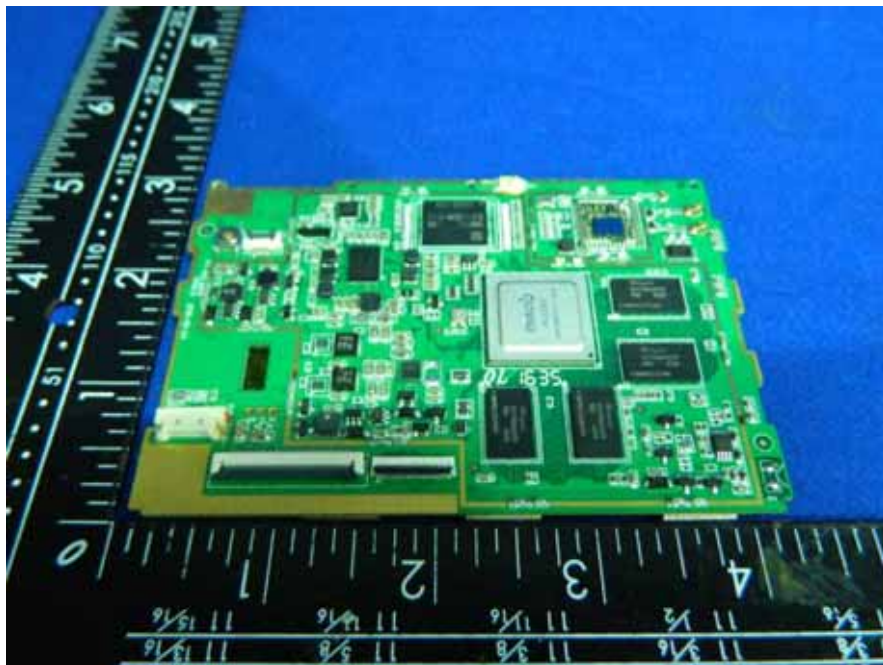
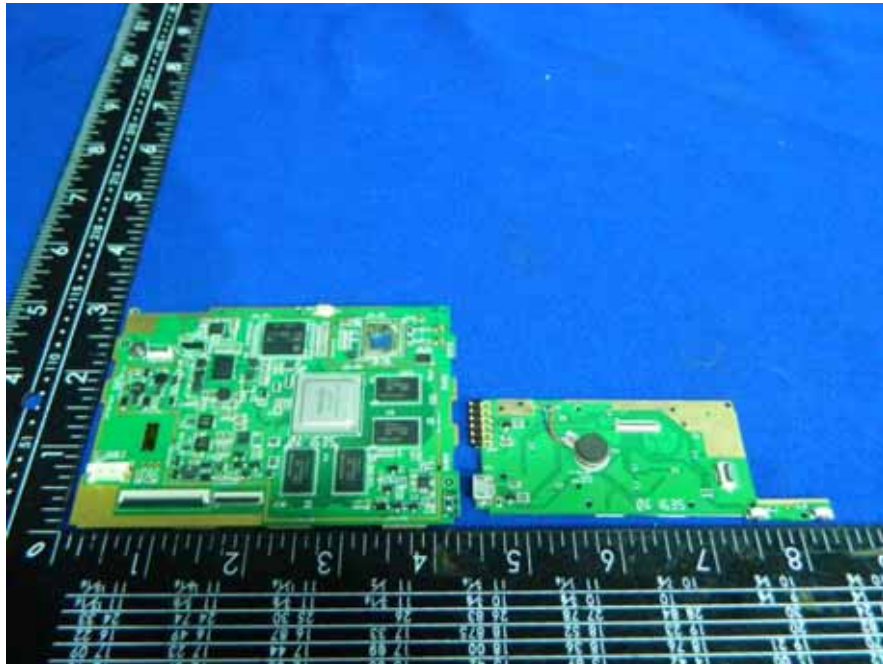




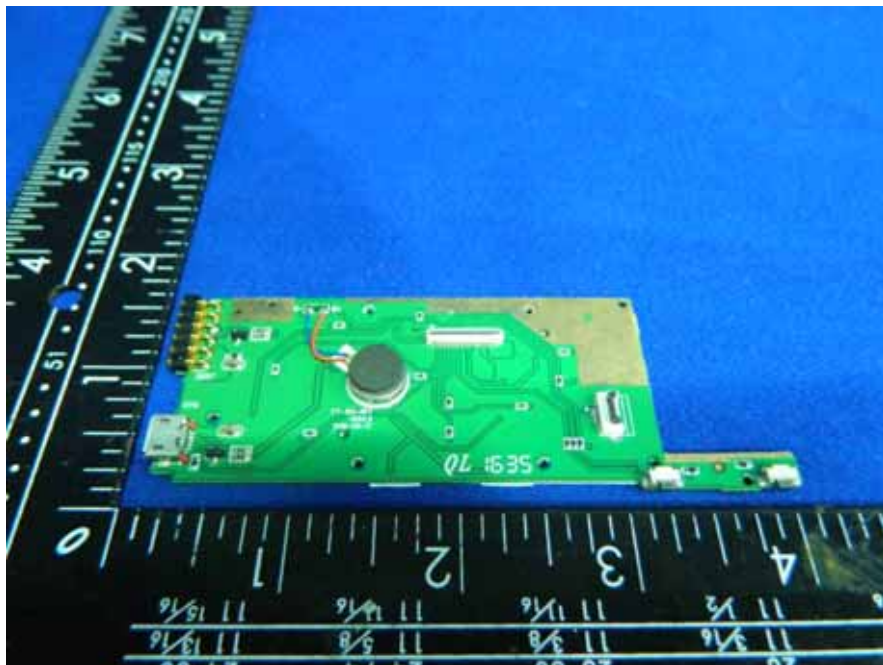
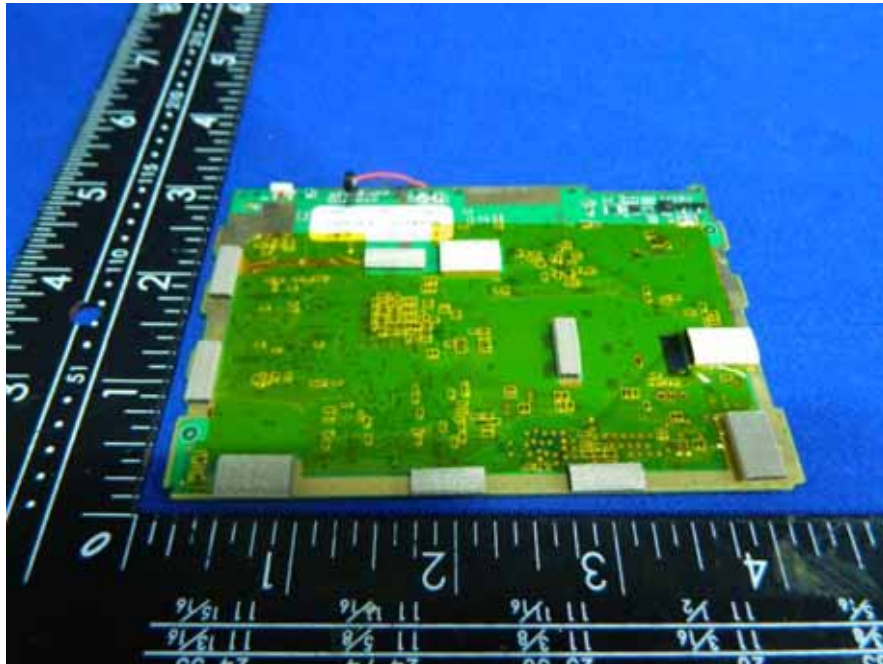


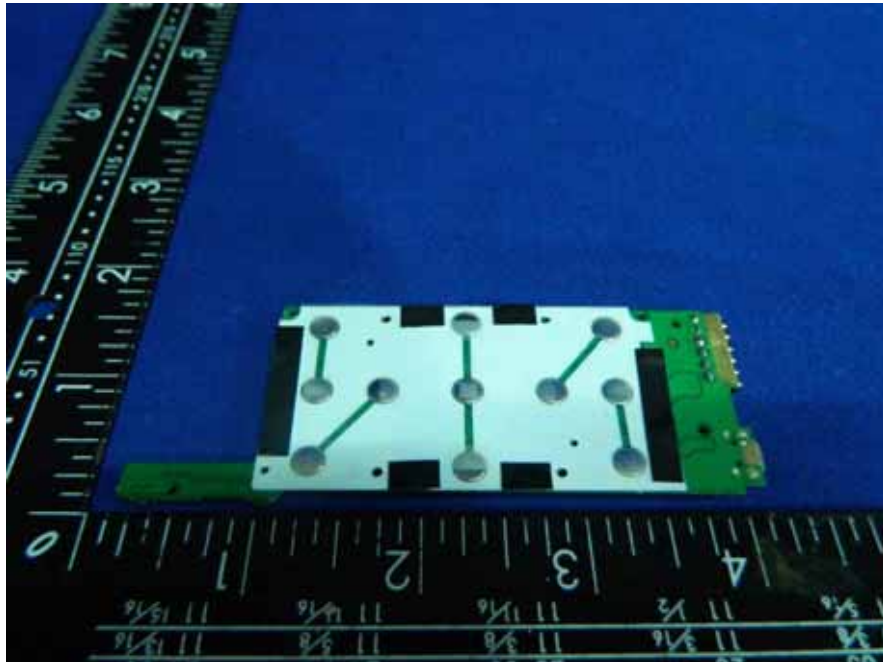


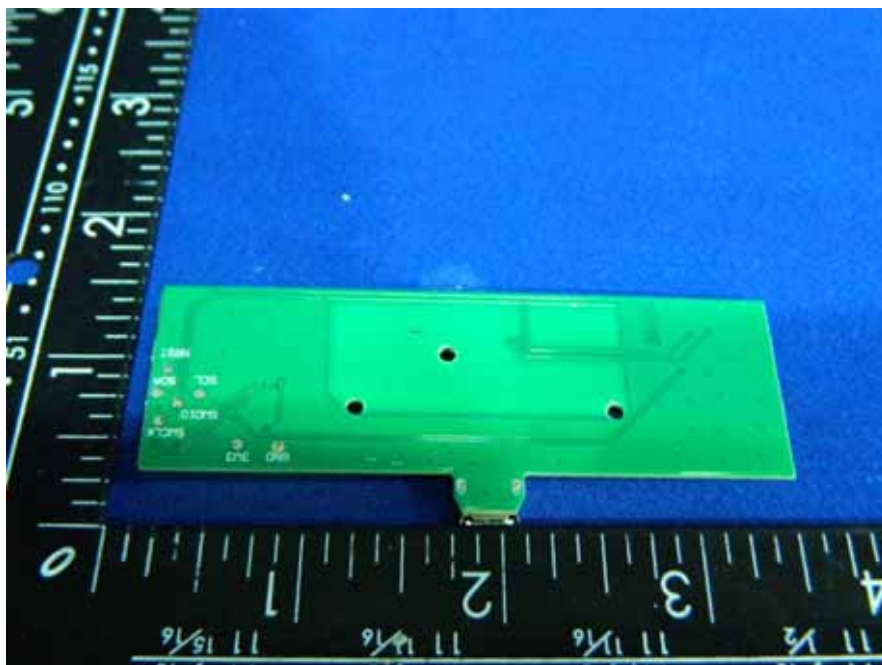
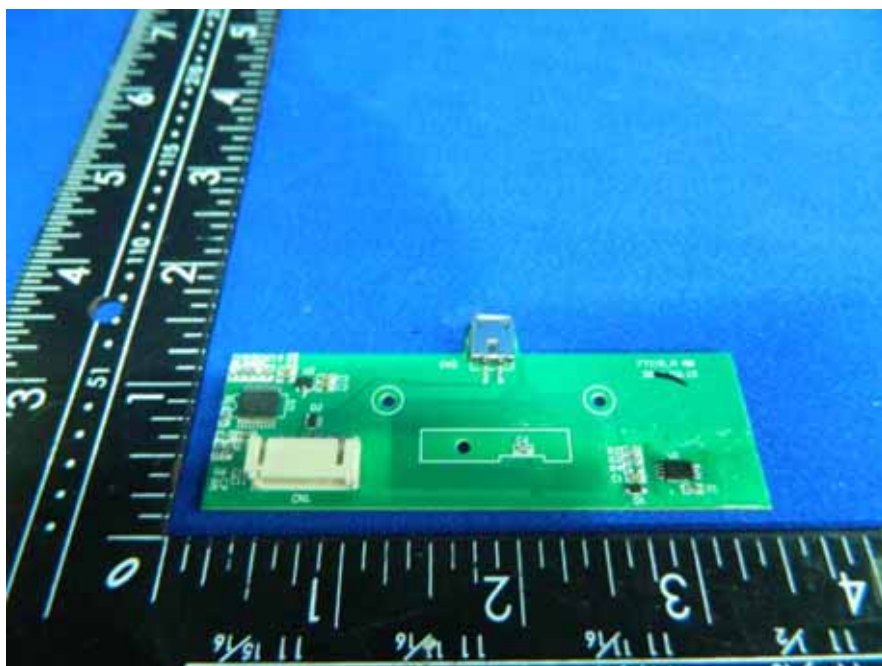














-----The end-----