



Figure 1: Top View of the CM42B

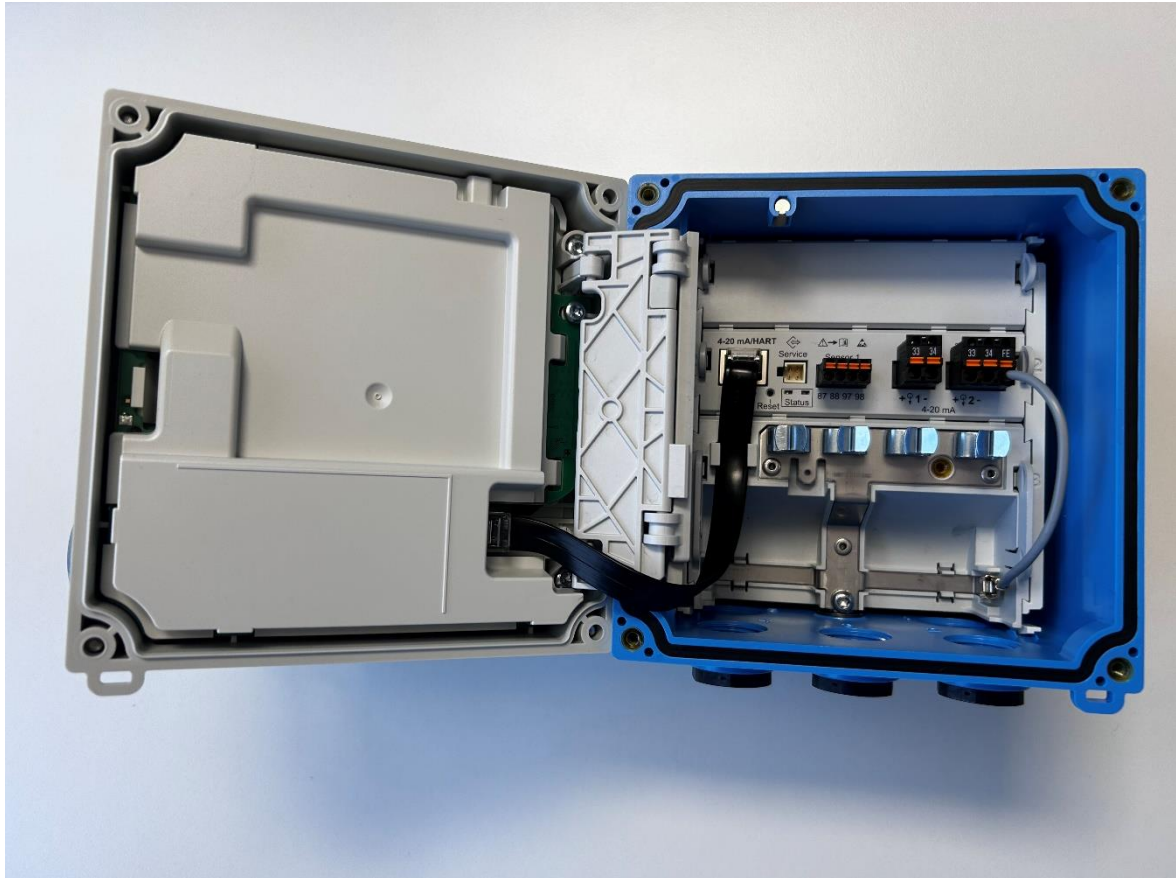


Figure 2 : View of the opened Top Side

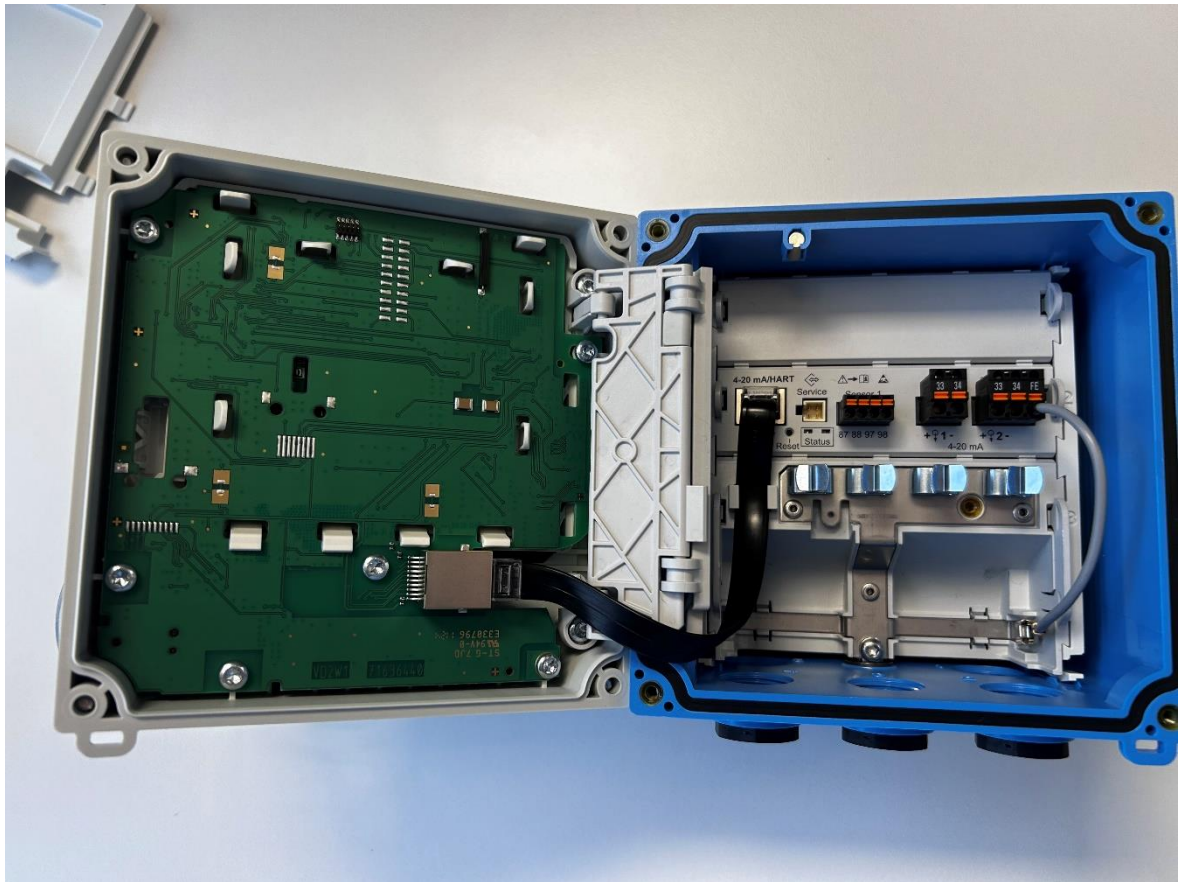


Figure 3 : View of the opened Top Side - Cover of display circuit board removed

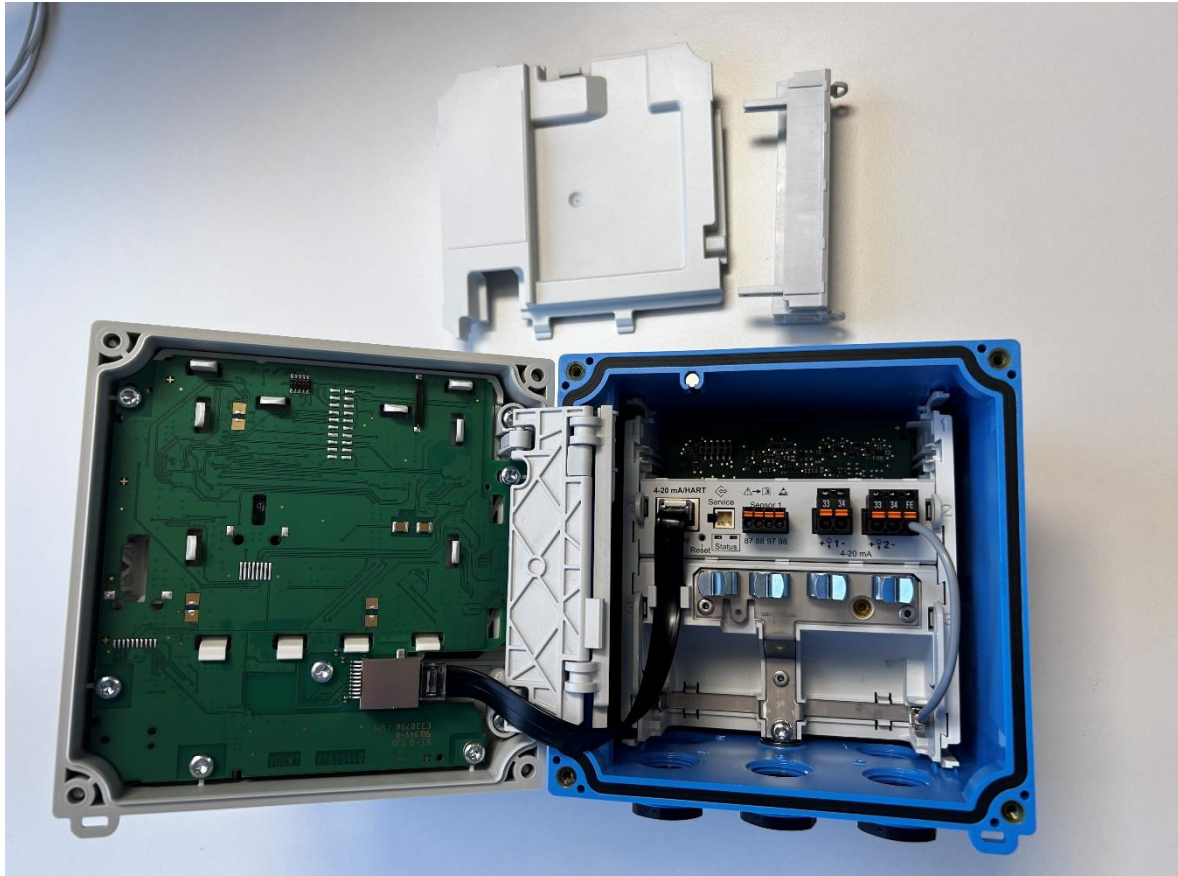
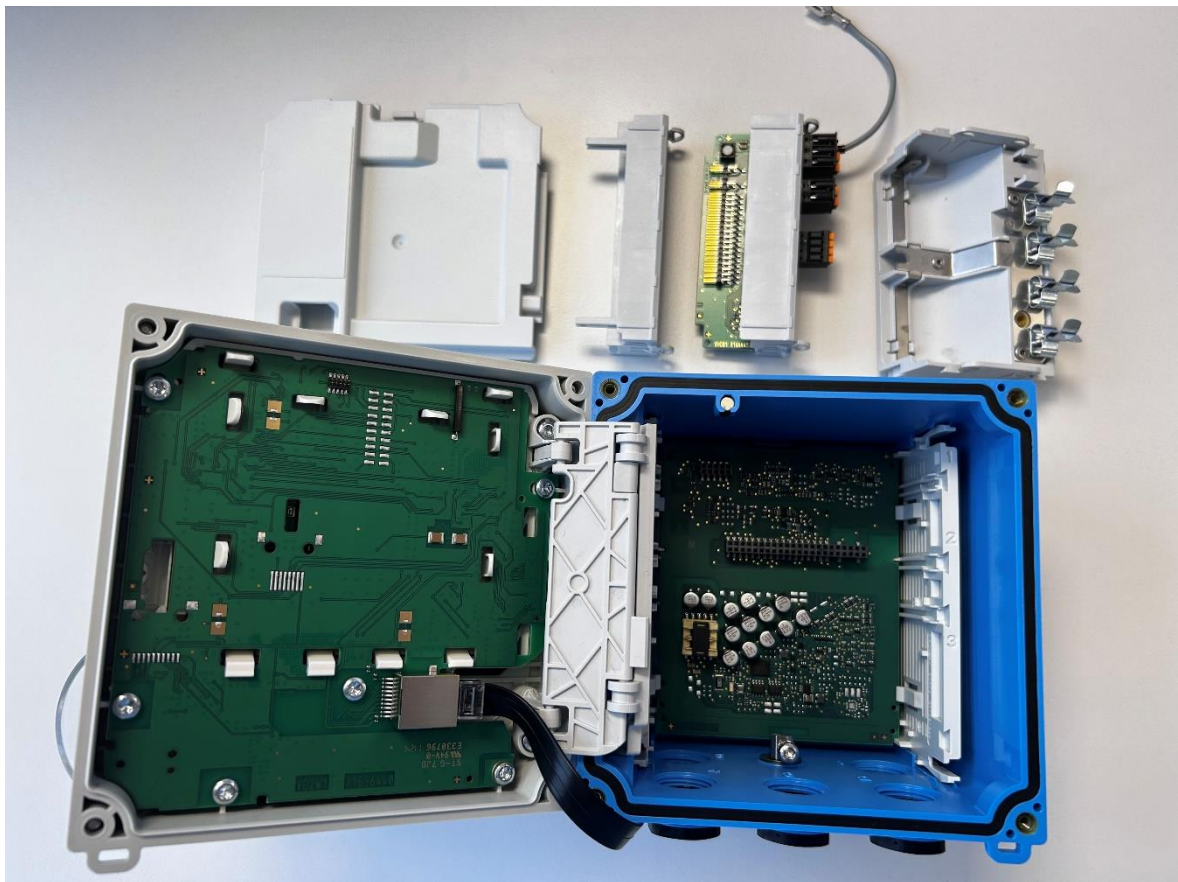


Figure 4 : View of the Opened Top Side – Upper blanking plate removed





*Figure 5 : View of the Opened Top Side – middle Module removed*



*Figure 6 : View of the Opened Top Side – bottom module cover shielding*



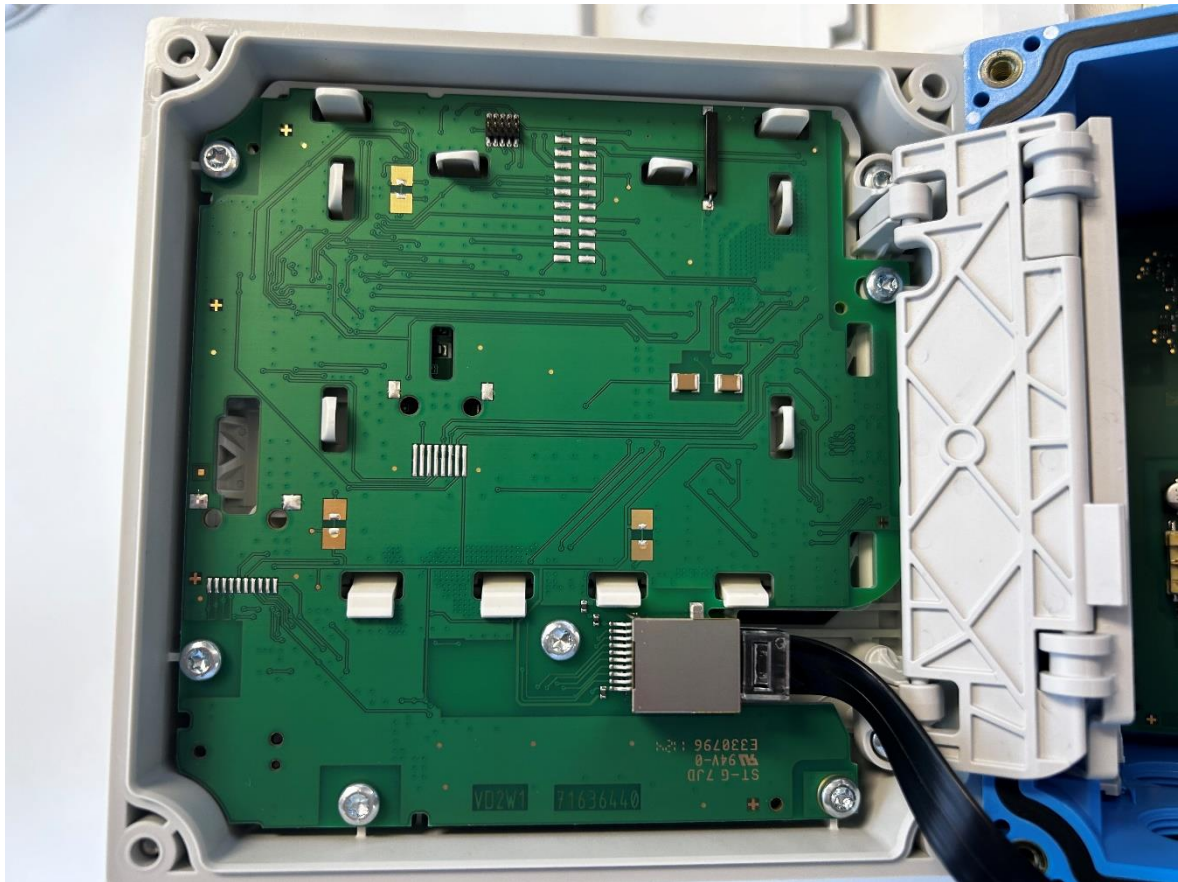


Figure 7: PCB VD2W1

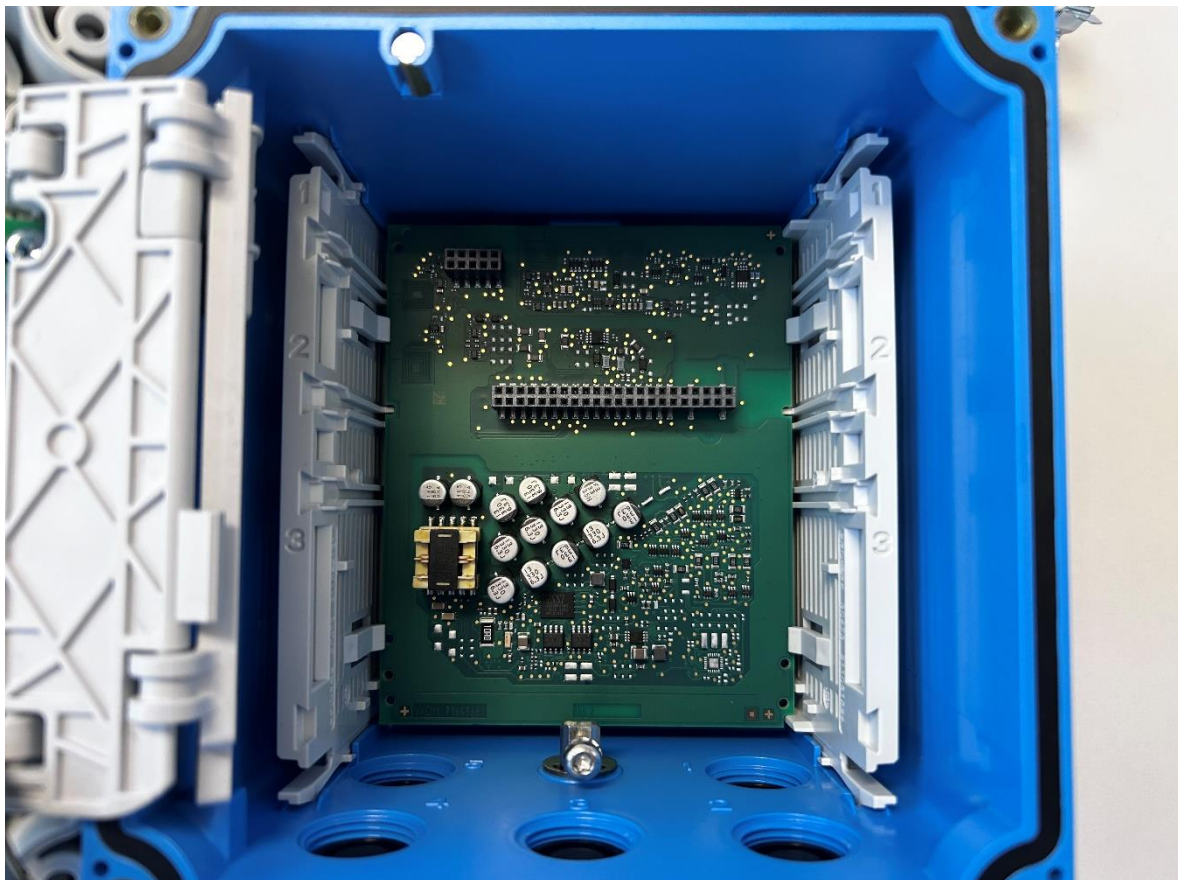


Figure 8: PCB VXCM1

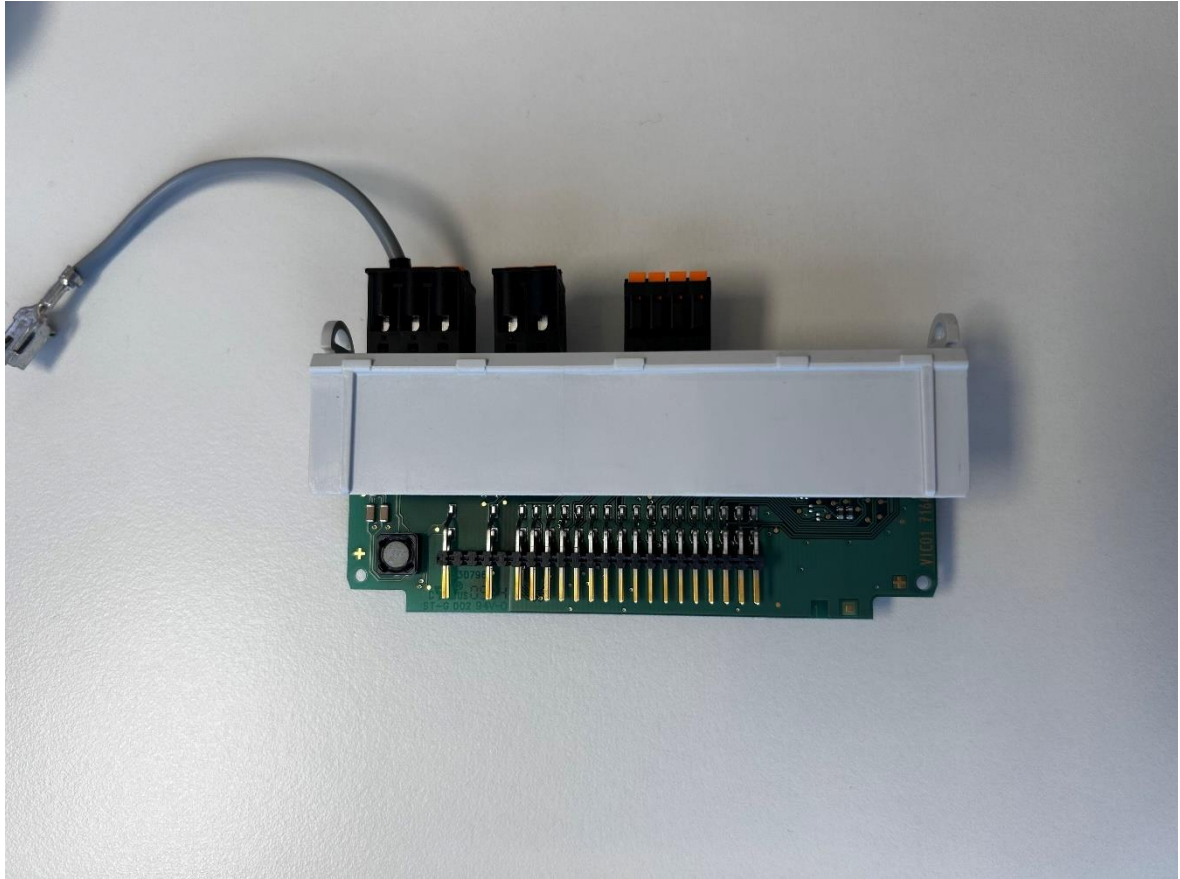


Figure 9: PCB VICO1

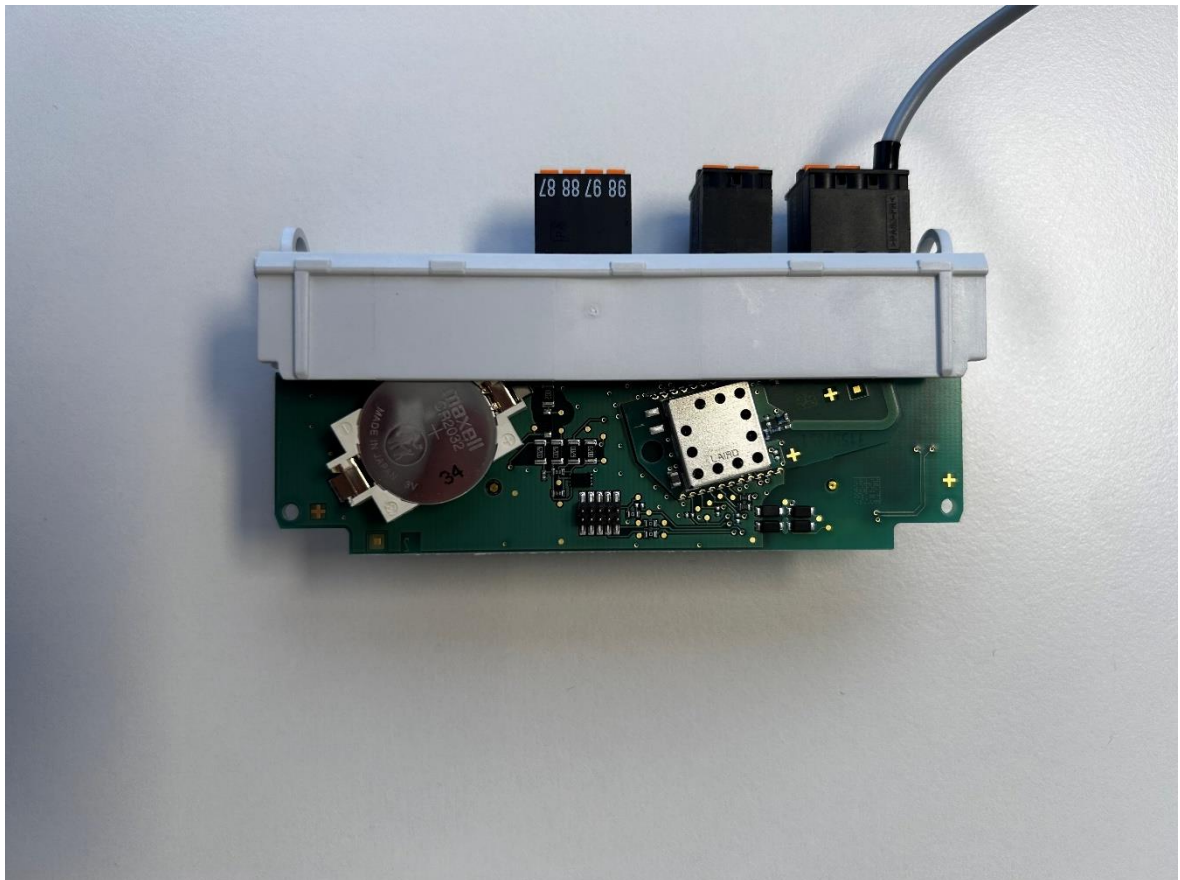


Figure 10: PCB VICO1