

■ What's in the box?

- 1 × Bluetooth Speaker
- 1 × User Operating manual
- 3PCS 3A battcres

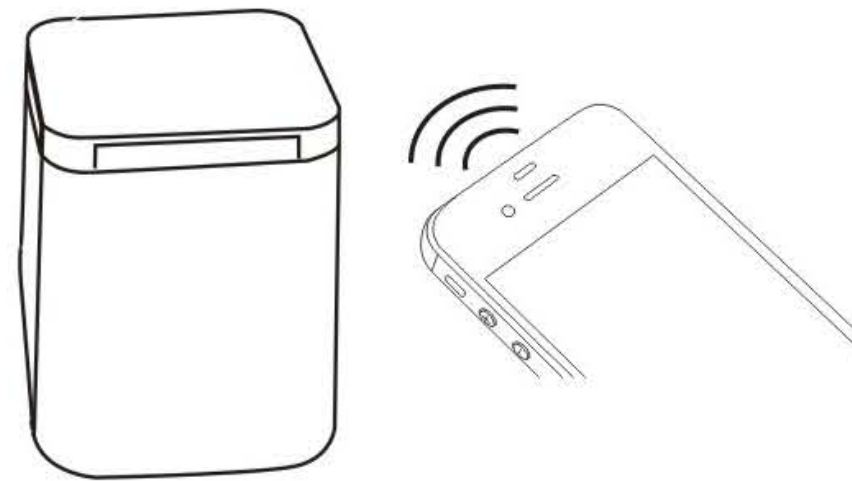
■ Bluetooth Speaker Operation

Note:the Bluetooth Speaker name is TILE Speaker,
Pairing code is 0000

- Powering on the Speaker:
 - 1.Push the swtich at the bottom of the speaker to ON position to power on the speaker
 2. When the prompt tone sounds and the blue indicator flashes,the speaker has turned on.
- Pairing a Device to the Bluetooth Speaker:
 1. On the device to be paired(phone,tablet,etc.),select Bluetooth device "TILE Speaker"
 2. If prompted for a password,enter the pairing code "0000", and press "Yes" to connect your device.
Note that some devices can be connected directly without entering a pairing code.
 3. The Bluetooth speaker is ready for use.
- Bluetooth Reconnection

1. When the device and Bluetooth speaker are separated beyond the effective range (≥ 30 ft), the Bluetooth communication will be disconnected.
2. Return the device to the effective range (≤ 30 ft.) to reconnect with the Bluetooth speaker.

- To power off the speaker, Push the switch at the bottom of speaker to "OFF" position to turn off the speaker



Specifications

Speaker:	D40mm (120HZ-20KHZ)
Power output:	4 Ω 3W
SNR:	$\geq 85 \pm 2$ dB
Bluetooth version:	3.0
Bluetooth effective range:	up to 30 ft
3pcs 3A batteries:	200mAh
Playing time:	1.5 hours
Product size:	89mmx76mm
Single weight:	160g

FCC STATEMENT :

This device complies with Part 15 of the FCC Rules. Operation is subject to the following

two conditions:

- (1) This device may not cause harmful interference, and
- (2) This device must accept any interference received, including interference that may cause undesired operation.

Warning: Changes or modifications not expressly approved by the party responsible for compliance could void the user's authority to operate the equipment.

NOTE: This equipment has been tested and found to comply with the limits for a Class B digital device, pursuant to Part 15 of the FCC Rules. These limits are designed to provide reasonable protection against harmful interference in a residential installation. This equipment generates uses and can radiate radio frequency energy and, if not installed and used in accordance with the instructions, may cause harmful interference to radio communications. However, there is no guarantee that interference will not occur in a particular installation. If this equipment does cause harmful interference to radio or television reception, which can be determined by turning the equipment off and on, the user is encouraged to try to correct the interference by one or more of the following

measures:

- n Reorient or relocate the receiving antenna.
- n Increase the separation between the equipment and receiver.
- n Connect the equipment into an outlet on a circuit different from that to which the receiver is connected.
- n Consult the dealer or an experienced radio/TV technician for help.

RF warning statement:

The device has been evaluated to meet general RF exposure requirement. The device can be used in portable exposure condition without restriction.