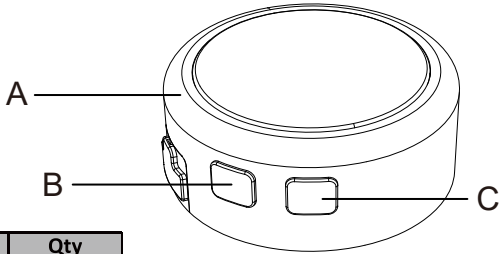


UNDER CABINET LIGHT PUCK 3”

UNDCABRN3A300ST8SC33INWH



Part	Description	Qty
A	Fixture body	1
B	CCT selectable push button	1
C	Stepless dimming push button	1

For warranty coverage, please register at www.ledvanceUS.com

⚠ WARNING

- Turn off electricity at circuit breaker box (or main fuse box) before beginning installation by removing fuse (or switching off circuit breaker).
- Be careful not to damage or cut the wire insulation (covering) during fixture installation. Do not allow wires to contact any surface having a sharp edge. To do so may damage or cut the wire insulation, which could cause serious injury or death from electric shock.
- All electrical connections must agree with local codes, ordinances or the national electric code (NEC). Contact your municipal building department to learn about your local codes, permits and/or inspections.
- Risk of fire – most dwellings built before 1985 have supply wire rated for 140°F/60°C. Consult a qualified electrician before installation.

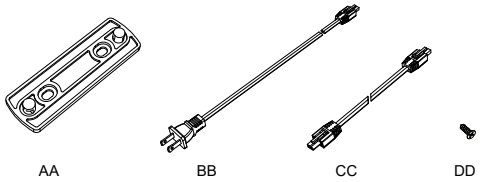
Preparation:

Before beginning assembly, installation or operation of product, make sure all parts are present. Compare parts with package contents list and diagram on previous page. If any part is missing or damaged, do not attempt to assemble, install or operate the product. Contact customer service for replacement parts..

TOOLS REQUIRED (not supplied)



CONTENT



Part	Description	Qty
AA	Mounting Bracket	1
BB	72” plug-in cable	1
CC	18” Linking cable	1
DD	Mounting screws	2

FCC STATEMENT

This device complies with Part 15 of the FCC Rules. Operation is subject to the following two conditions: (1) This device may not cause harmful interference, and (2) This device must accept any interference received, including interference that may cause undesired operation. This equipment has been tested and found to comply with the limits for a Class B digital device, pursuant to part 15 of the FCC Rules. These limits are designed to provide reasonable protection against harmful interference in a residential installation. This equipment generates, uses and can radiate radio frequency energy and, if not installed and used in accordance with the instructions, may cause harmful interference to radio communications. However, there is no guarantee that interference will not occur in a particular installation. If this equipment does cause harmful interference to radio or television reception, which can be determined by turning the equipment off and on, the user is encouraged to try to correct the interference by one or more of the following measures:

- Reorient or relocate the receiving antenna.
- Increase the separation between the equipment and receiver.
- Connect the equipment into an outlet on a circuit different from that to which the receiver is connected.
- Consult the dealer or an experienced radio/ TV technician for help.

FCC Radiation Exposure Statement:

This equipment complies with FCC radiation exposure limits set forth for an uncontrolled environment. In order to avoid the possibility of exceeding the FCC radio frequency exposure limits, Human proximity to the antenna shall not be less than 20cm(8 inches)during normal operation. That changes or modifications not expressly approved by the party responsible for compliance could void the user's authority to operate the equipment. CAN ICES-005 (B)

FCC Supplier's Declaration of Conformity:
47 CFR § 2.1077 Compliance Information
Responsible Party: LEDVANCE LLC
1100 Tyrone Pike Versailles, KY 40383,
USA 1-800-544-4828
Unique Identifier: 63870

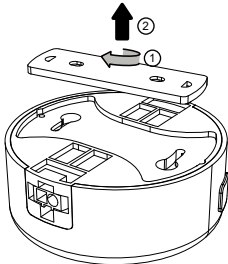
INSTALLATION

1. Turn Off Power

Before beginning the installation, make sure all power is off at the breaker box.

2. Take out the mounting bracket

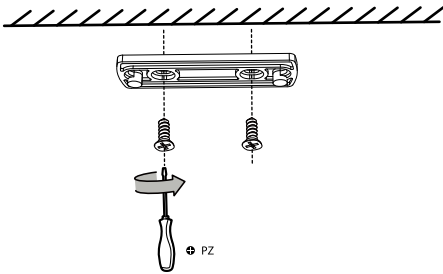
Remove the mounting bracket from the back of the puck light by rotating it clockwise.



3. Installing Mounting Bracket

- Find the desire place for the fixture light and mark clearly using the mounting brocket holes.
- Screw in the mounting bracket using he mounting screws DD on the desired location .

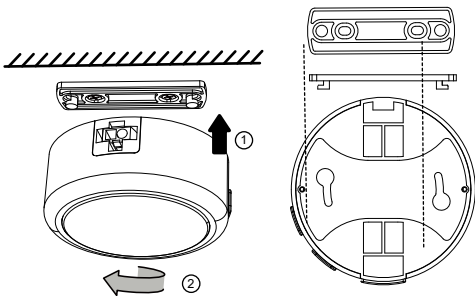
CAUTION: CHECK YOUR CABINET THICKNESS FIRST. BE CAREFUL NOT TO DRILL THROUGH CABINET



NOTE : Before mounting the fixture, plan the power cord path for neat and secure installation. The 5-foot cord needs to be near a 120V plug for connection. If unsure, consult a licensed electrician.

4. Mounting the lighting fixture

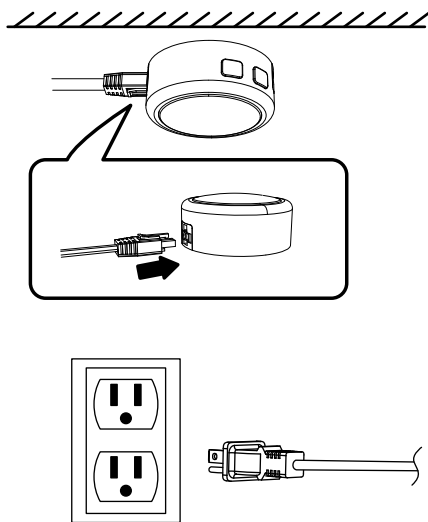
Raise the fixture up and align the keyholes on the fixture to the mounting bracket. Twist and lock the fixture into place by holding the fixture and gently rotating in the clockwise direction.



5. Connect power cord and turning power on

- Plug in on end of the power cord to fixture light .
- Connect the power cord to the power outlet on the wall.

NOTE: The input port is different from output port, forcing it in the wrong side may damage the fixture.



Two or More Fixture Installation

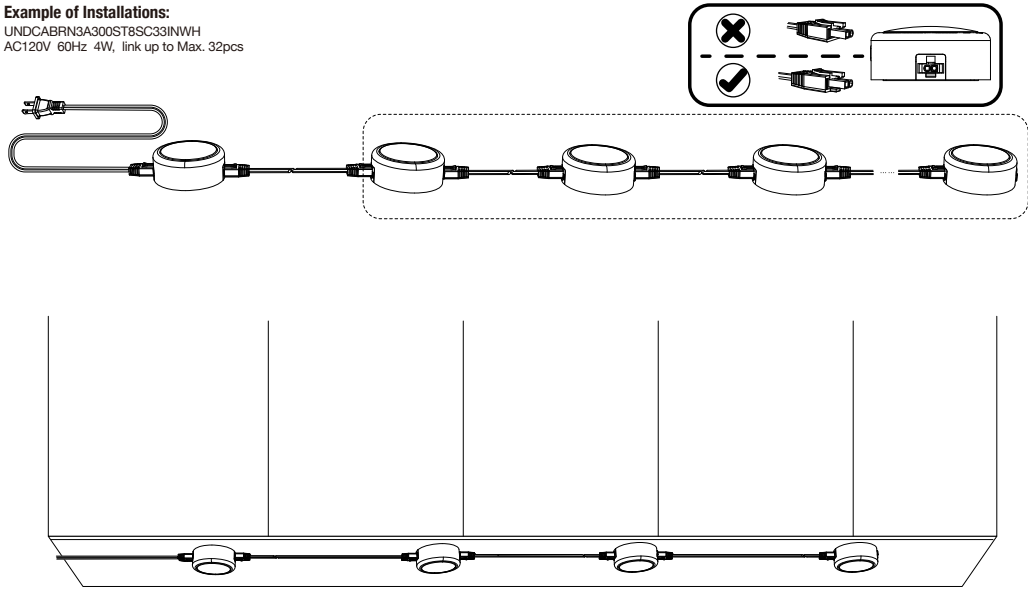
1. Installation

Repeat step 1 to step 4 to install multiple fixtures.

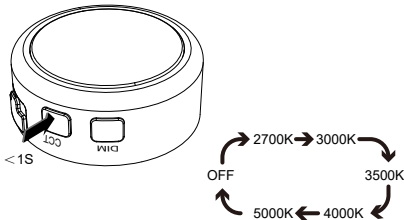
2. Additional Notes when installing multiple fixtures together

- NOTE : For installations with multiple fixtures, do NOT power on the fixture group until all electrical connections have been made and the fixtures are securely mounted. Tap Sync Series fixtures can be interconnected using the 18" linking cord supplied with this kit.
- Do NOT use linking cord as a means of turn fixtures on and off.

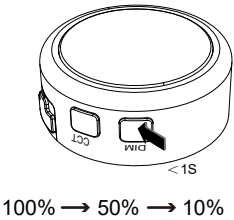
Example of Installations:
UNDCABRN3A300ST8SC33INWH
AC120V 60Hz 4W, link up to Max. 32pcs



Operating Instructions:



CCT Button: Choose from 5 CCTs
Long press for 6S to enter Pairing Mode



DIM Button: Change light levels to
100%, 50%, 10% and OFF

Pairing Fixtures to Fixtures

- After installation is done, turn the power ON.
- Long press the CCT button on the fixtures you want to pair for 6 seconds to enter pairing mode. Fixtures will start blinking slowly for about 45 seconds .
- Fixtures will pair automatically after the 45-second pairing window.

Note: If the product doesn't enter pairing mode, try one of these methods:

- 1.Power cycle the units by unplugging them and plugging them back in 3 times (off/on/off/on/off/on).
- 2.Alternatively, press the CCT button for about 6 second.

Changing Color Temperature:

- Select the desired color temperature by pressing the CCT push button on one of the units.
- All units will automatically follow and adjust to the same color temperature.

Adding Products to a Group:

- To add a unit to a group, press and hold the CCT button for 3 seconds on the unit you want to add to the group, and then press the CCT button on one unit from the group.

Pairing Fixtures to Remote (Sold separate)

- Long press the CCT button for 6 secs to enter pairing mode. product will start blinking slowly for about 45 seconds .
- Press the desired group for about 3 sec then the ALL button

Unpairing Fixtures from Remote or Groups:

Individual Fixtures:

- Press and hold the fixture switch for 6 seconds.
- The fixtures will pulse three times to indicate they are ready for the next command.

From Remote :

- Press and HOLD the group number you want to unpair for 4 seconds.
- Press the ON/OFF button.
- The units will pulse three times to indicate they are ready for the next command.

CARE AND MAINTENANCE

To clean, turn off and wipe with a damp, non-abrasive cloth.

TROUBLESHOOTING

1. The light does not come on at all:
 - a)Make sure the wall switch and circuit breaker are on.
 - b)Make sure the wiring is correct.
2. Fuse blows or circuit trips when light is turned on.
 - a)Check for crossed wires, ensure wiring is correct.

If unable to fix any of the above issues, please consult a certified electrician.

LIMITED WARRANTY

5 YEAR LIMITED WARRANTY: LEDVANCE warrants the Product to be free from defects in material and workmanship from date of purchase for the specified warranty period when used as directed. Failure to comply with Product warnings and instructions shall void the warranty. This warranty does not cover Product subject to accident, neglect, abuse, misuse, or acts of God, If Product fails to operate according to the warranty, return Product to place of purchase with proof of purchase date and LEDVANCE will replace with the same or similar Product free. LABOR IS NOT INCLUDED. LEDVANCE reserves the sole right to examine and determine whether the Product is defective. For additional information, contact 1-800 LIGHT- BULB(1-800-544-4828);Email: lightbulb@ledvance.com.THIS IS THE EXCLUSIVE REMEDY AVAILABLE. LIABILITY FOR INCIDENTAL OR CONSEQUENTIAL DAMAGES IS EXPRESSLY EXCLUDED. SOME STATES AND JURISDICTIONS DO NOT ALLOW THE EXCLUSION OR LIMITATION OF INCIDENTAL OR CONSEQUENTIAL DAMAGES, SO THE ABOVE LIMITATION OR EXCLUSION MAY NOT APPLY TO YOU. THIS WARRANTY GIVES YOU SPECIFIC LEGAL RIGHTS, AND YOU MAY ALSO HAVE OTHER RIGHTS WHICH VARY FROM STATE TO STATE OR PROVINCE. THIS WARRANTY IS IN LIEU OF ALL OTHER WARRANTIES, EXPRESS OR IMPLIED, INCLUDING THE WARRANTY OF MERCHANTABILITY OR FITNESS OF USE, WHICH ARE HEREBY EXCLUDED. IF UNDER APPLICABLE STATE LAW IMPLIED WARRANTIES MAY NOT VALIDLY BE DISCLAIMED OR EXCLUDED, THE DURATION IS LIMITED TO THE SPECIFIED WARRANTY PERIOD.

