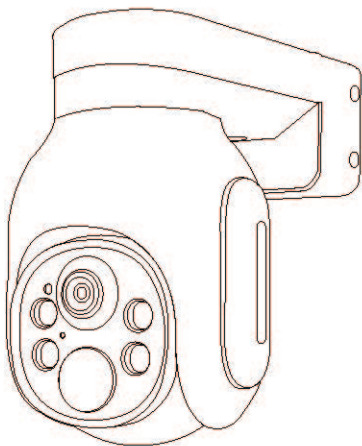


# Dome surveillance camera

## Quick Guide

\* Before using the product, please read the Quick Guide carefully and keep it well.



EN

CH

\* This instruction manual is for reference only.

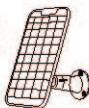


# Packing List

After opening the package, please check the low-power wireless battery camera (the "Equipment") to verify whether the following parts are complete.



Equipment



Solar panel



Bracket



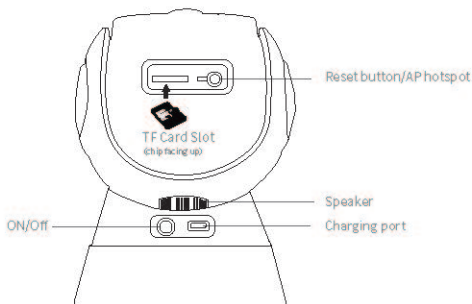
Screw Bag



User manual

## Appearance

### WiFi function introduction



Reset button AP hotspot	Press and hold for around 5 Secs, let it go when hear a “beep” sound, the device restores factory settings: Press and hold for around 8 secs and hear 2"beep", and then let it go, the device switches to AP hotspot mode, Hotspot password: 12345678
charging port	Type-C power supply and solar panel charging port
Speaker	Used to send out a system prompting sound and achieve voice dialogue
TF Card Slot	The user can insert 8G, 16G, 32G 64G 128G SD card (Please use branded card with C10 and above) to store video image files

## Installation Guide

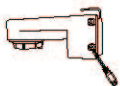
As shown in the figure, install the stand



- ① Please install and fixed the metal bracket well on the wall



- ② Adjust and match the camera bracket hole to the metal bracket hole



- ③ Screw the camera bracket and fixed it

## 1. APP INSTALLATION

(1.) Scan the following QR codes or search for "UBox" from the App Store(for iOS devices) or Google Play Store (for Android smartphones) to download and install the app.



## 2. APP REGISTRATION

(1.) Open the app then input your E-mail address then press 'Register'. Check and select to agree the agreement then your E-mail box will get an verification mail.

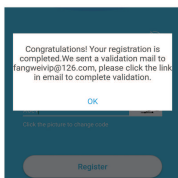
( For better user's experience, please allow to open all permissions to avoid missing any notifications from the app.)

A blue registration screen. At the top, it says "Please enter your email" with a text input field. Below the field is a white "Register" button. At the bottom, there is a checked checkbox and the text "Registered account means you agree to UBox User Agreement".

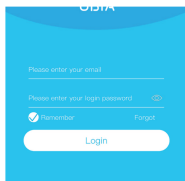
(2.) Set the login password and confirm the login password.  
Then press 'Register' to next step.  
(For your password safety the password requires more than 8 characters plus combination of letters)

A blue registration screen for password setup. It has two text input fields: "Enter password" and "Confirm password", each with a visibility toggle icon. Below the second field is a note: "Your password must be 8-32 characters and must include at least one number and one character". There is a "Code" field with a CAPTCHA image showing the letters "He JJ". Below the code field is the text "Click the picture to change code". At the bottom is a white "Register" button.

(3.) We send a verify mail to you, go to your mail box click the link to complete the verification.

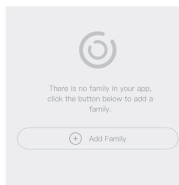


(4.) Enter your E-mail address, and password , click login .  
(APP will auto fill the account info)



### 3. WI-FI CONNECTION

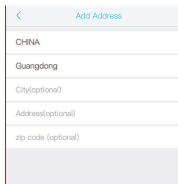
(1.) Press 'Add Family' then set the room or position as per reminders.



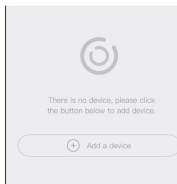
(2.) Enter your family name and then press 'Next'.



(3.) Input the necessary information just like Country, Province, then press 'Done'.



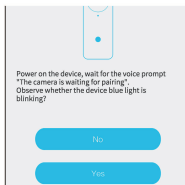
(4.) Press 'Add a device' to add a smart device



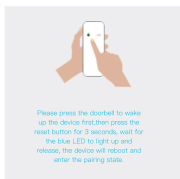
(5.) Connect the device with power supply, and make sure your mobile phone is connected to an available Wi-Fi. Then press 'Setup device'.



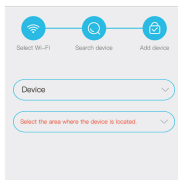
(6.) After the power on the device, wait for the device blue LED are blinking Which means your device in pairing mode



(7.) If the device blue are not blinking, please press the power/Call key to wake up the device first, then hold and press the RESET button until the blue indicator to light up and then release. The device will reboot and enter the pairing state.



( 8. ) Give device a name and select the device address before setup .the APP have a default name . after confirmed , go to next step.



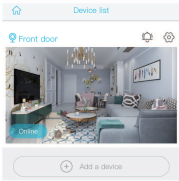
(9) The app will input the Wi-Fi name automatically, please input the correct Wi-Fi Password. Then you can choose the 'QR code configuration' or 'Sound wave configuration'.



(10) QR code configuration: Select the QR code configuration then the mobile phone display a QR code. Use the device to scan to the QR code 10cm away from the mobile phone.



(11.) The device will enter to the device list automatically.  
Setup success! The device is ready to use.

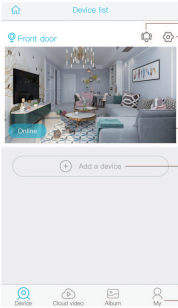


(12.) Notes about PIR detection

\*User can change the PIR detection sensitivity in device settings. we recommend to set sensitivity at "Disabled" or "Low" to reduce false alert and save the battery power in noisy environments.

- \*Disabled: disabled PIR detection.
- \*Low: delay 7 seconds PIR detects a moving.
- \*Medium: delay 5 seconds PIR detects a moving.
- \*High: delay 1 second PIR detects a moving.

4. USING THE APP



Enter to select your family or smart device location

Turn on/off the push notification.

Settings: Sharing, Cloud storage, Delete the device..

Press to enter the preview section.

Press to add a smart device

Account and value-added account management