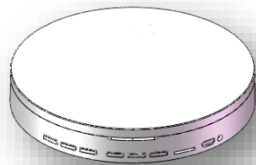


Dynamic styles



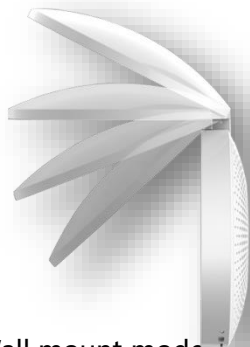
Closed mode
Music + Atmosphere lighting

P09



Table lamp mode
Music + Basic Illumination

P08



Wall mount mode
Music + Basic Illumination

P07

Parameters

Product Type	Seashell Music Light X1
Lumens	350lm
Beam Angle	120°
Typical Power	4W(Light) + 4W(Speaker)
CCT	3000K/4000K/Tune
CRI	Ra>80,
Life time @Ta=25°C	10000hrs
Input Voltage	5V
Ambient Temperature	-20°C -->40°C
Dimension	Ø128*H46mm
Certification	CCC, CE, RoHs
Weight	323g
Battery Capacity	4500mAH
Battery Life	8Hrs @ Speaker only 6Hrs @ Light only 03Hrs @ Full Power

Package information



Shell Music Light x1



USB Cable x1



Ø80 Wall Mount
Steel Stick x1



P03



P02



A SHELL MUSIC LIGHT

Instruction

P01

Bluetooth introduction

Bluetooth mode

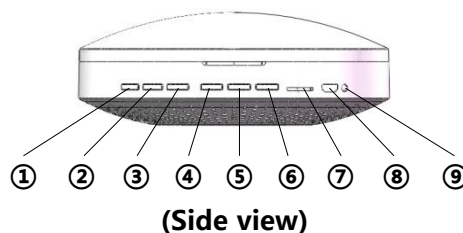
Bluetooth connection only work when in power on status.

Bluetooth connection

- 1 Power on the device. And turn on Bluetooth in the mobile phone or other devices. Press them 'searching' function.
- 2 Select the "Seashell light" when being found.
- 3 After successfully connection, the device will inform by voice "Bluetooth connected".

Mode switch

After press mode switch key, it will switch to TF card, and Bluetooth connection will automatically divided.



P18

Key and interface

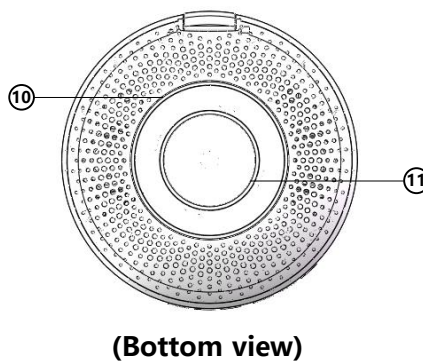
1. Mode switch : Short press the key, the light will on or off, long press the key will switch between Bluetooth mode or TF card mode.
2. Light adjustment + : Short press the key, increase the light level.
3. Light adjustment - : Short press the key, decrease the light level.
4. Music control + : Short press the key will play previous item, long press the key will increase the volume.
5. Music control - : Short press the key will play next item, long press the key will decrease the volume.
6. Play/Pause and On/off : Short press the key will Play or Pause the current playing item. Long press the key will Power on or off the device.
7. TF card interface
8. USB interface (only for charging)
9. LED: Blue – Normal mode, Red – Low power.

P15

P12

Battery and Charing

- 1 When first time using the device, please charge the battery. All battery time parameters is related to full power status.
- 2 When red LED flash and voice indication "low power", please charge battery immediately. The devices support USB charge. When LED turns to blue, it means the battery charging finished.
- 3 Please power off, if long time not use the device.



10. Anti-slip Ring.

11. Magnet

Magnet can be used to fix the device on the related metal surface. Please be aware the Metal surface should have relative strong loading capacities.

12. USB cable

Used for connect standard USB charger.

13. Metal Sheet

The Metal Sheet together with 3M glue sheet, could stick on any surface and mount the device on the wall.

P14

P11

Q&A

Bluetooth not connected

- 1 Check the device if in Bluetooth searching mode.
- 2 Check if too many Bluetooth devices surrounded. Close the others and re-connect.
- 3 Disconnect the last connection with the devices and reconnect.

Voice is too low

- 1 Check the Volume.
- 2 Check the Bluetooth devices' volume.
- 3 Check if the battery is to low.

Music not playing fluently

- 1 Check the distance between Bluetooth device and Shell light.
- 2 Check if there is any strong interruption devices nearby.

P16



13

P13

P10

Attention

Please store and use the device in the normal temperature.

Not put the device into water or high humid environment.

Not heavy press, through, or crash the device.

Not self open or repair the product.

Please use the standard USB adapter to charge the devices.

The warrant life time is not include any people made destroys on the devices.

FCC Warning Statement

Changes or modifications not expressly approved by the party responsible for compliance could void the user's authority to operate the equipment. This equipment has been tested and found to comply with the limits for a Class B digital device, pursuant to Part 15 of the FCC Rules. These limits are designed to provide reasonable protection against harmful interference in a residential installation. This equipment generates uses and can radiate radio frequency energy and, if not installed and used in accordance with the instructions, may cause harmful interference to radio communications. However, there is no guarantee that interference will not occur in a particular installation. If this equipment does cause harmful interference to radio or television reception, which can be determined by turning the equipment off and on, the user is encouraged to try to correct the interference by one or more of the following measures:

- - Reorient or relocate the receiving antenna.
- - Increase the separation between the equipment and receiver.
- - Connect the equipment into an outlet on a circuit different from that to which the receiver is connected.
- - Consult the dealer or an experienced radio/TV technician for help.