

USER MANUAL

FCC ID: 2AKET-SMIVYBS1

The Federal Communication Commission Statement

This equipment has been tested and found to comply with the limits for a Class B Digital Device, pursuant to Part 15 of the FCC rules. These limits are designed to provide reasonable protection against harmful interference in a residential installation. This equipment generates, uses and can radiate radio frequency energy and, if not installed and used in accordance with the instruction, may cause harmful interference to radio communication. However, there is no guarantee that interference will not occur in a particular installation. If this equipment does cause harmful interference to radio or television reception, which can be determined by turning the equipment off and on, the user is encouraged to try to correct the interference by one of more of the following measures: -

- **Reorient or relocate the receiving antenna.**
- **Increase the separation between the equipment and receiver.**
- **Connect the equipment into an outlet on a circuit different from that to which the receiver is connected.**
- **Consult the dealer or an experienced Radio/TV technician for help.**

Use only shielded cables to connect I/O devices to this equipment. You are cautioned that change or modifications not expressly approved by the party responsible for compliance could void your authority to operate the equipment.

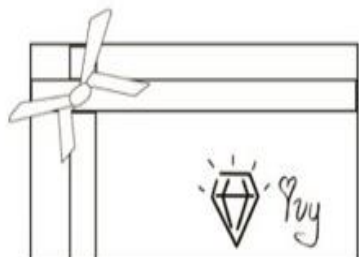
THIS DEVICE COMPLIES WITH PART 15 OF FCC RULES. OPERATION IS SUBJECT TO THE FOLLOWING TWO CONDITIONS:

- 1 This device may not cause harmful interference and
- 2 This device must accept any interference received, including interference that may cause undesired operation.

The antenna used for this transmitter must not be collocated or operation in conjunction with any other antenna or transmitter.

Notice : The changes or modifications not expressly approved by the party responsible for compliance could void the user's authority to operate the equipment.

IMPORTANT NOTE: To comply with the FCC RF exposure compliance requirements, no change to the antenna or the device is permitted. Any change to the antenna or the device could result in the device exceeding the RF exposure requirements and void user's authority to operate the device.



Thank you for purchasing IVY.

What's in the box?

1. IVY attached to necklace metal fitting and necklace chain
2. Bracelet metal fitting
3. Leather Bracelet
4. Tool to open IVY
5. 2x CR2032 batteries

5



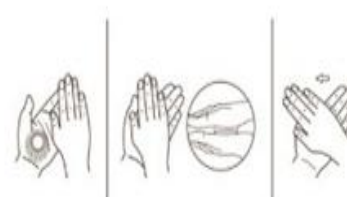
The top layer has IVY with necklace metal fitting and necklace chain attached to it already. You can take the top layer out completely and then take the chain out from the back and from the grooves at the corners. There is currently no battery inside IVY so the next step is to Add Battery.

2



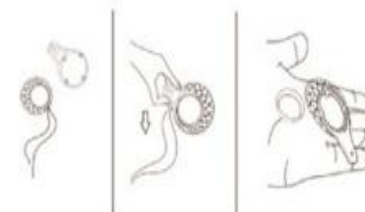
In the bottom layer, you will find 2x CR2032 batteries, bracelet metal fitting, leather bracelet and tool to open IVY.

3



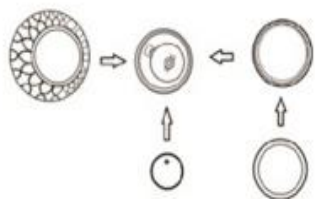
You have to open IVY to insert or replace battery, or to change from necklace to bracelet. The above picture shows how to open IVY using hand. Rotate anti-clockwise to open.

4



Or you can use the Tool to open IVY. Attach the tool on top of IVY (facing the stone) using the grooves on the side and then rotate anti-clockwise to open.

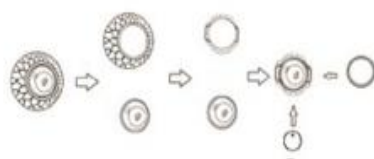
5



After IVY is open, put the battery where you see the battery contacts. Make sure the -ve side of battery is facing down and you can see the +ve side of the battery. After putting the battery, close the back cover either by hand or tool. Rotate clockwise to close.

In case necklace metal fitting came out while opening IVY, you can put it back in its slot. If water proofing rubber came out from inside back cover, you can put it inside before closing.

6



If you want to wear IVY as bracelet, the first thing to do is remove the necklace metal fitting and add bracelet metal fitting. Above picture shows how to do that. After putting the bracelet metal fitting, you can put the battery and close the back cover by hand or by tool.

7



And last thing is to attach the leather bracelet to bracelet metal fitting.

8

Updates, troubleshooting, assistance, safety instructions, warranty policy, specifications, compatibility and other info for your IVY can be found at www.getmyivy.com.

DESIGNED IN SINGAPORE.
MANUFACTURED IN TAIWAN.



© 2016 Smartfuture Pte Ltd. All rights reserved. IVY is registered trademark of Smartfuture Pte Ltd. All other trademarks are property of their respective owners.

International patents pending

SMARTFUTURE PTE LTD, #06-01,
178 Paya Lebar Road, Singapore 409030



GETTING STARTED