

Hand - drawn board wireless pairing guide

Step 1: Open the wireless pairing tool and plug the hand-drawn board and the wireless receiver into the computer separately

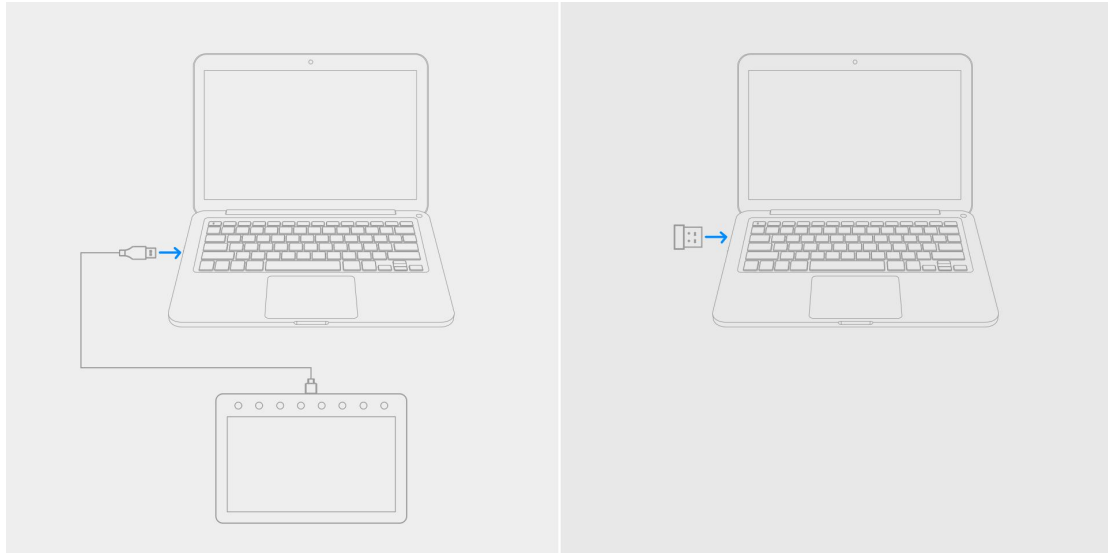


Figure 1- Connecting a hand-drawn board and a wireless receiver to the computer

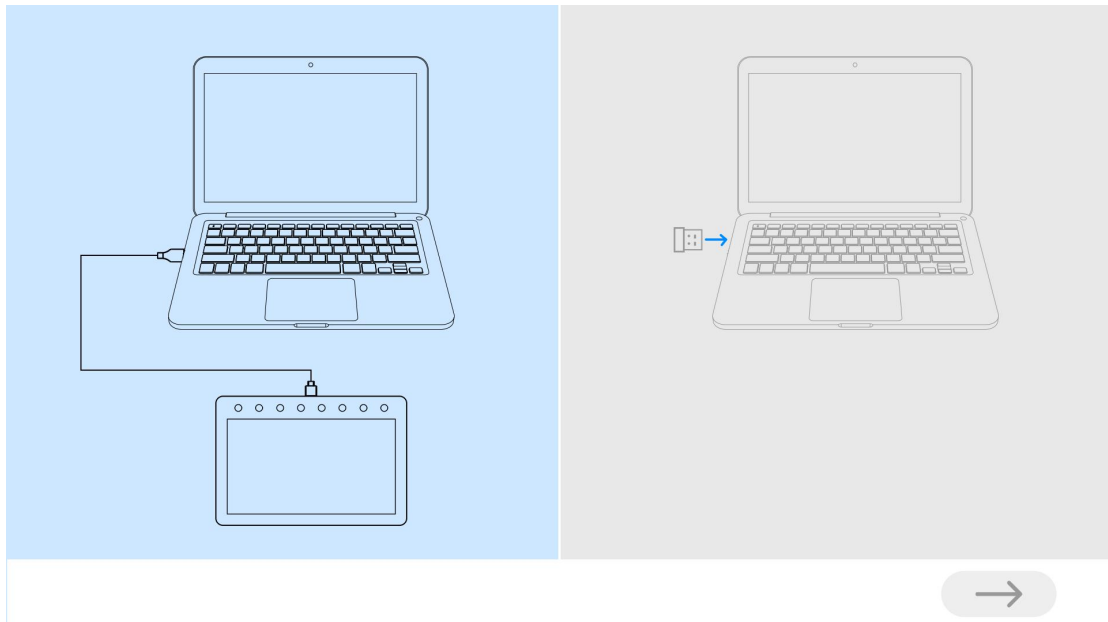


Figure 2-Hand-painted board connected to the computer

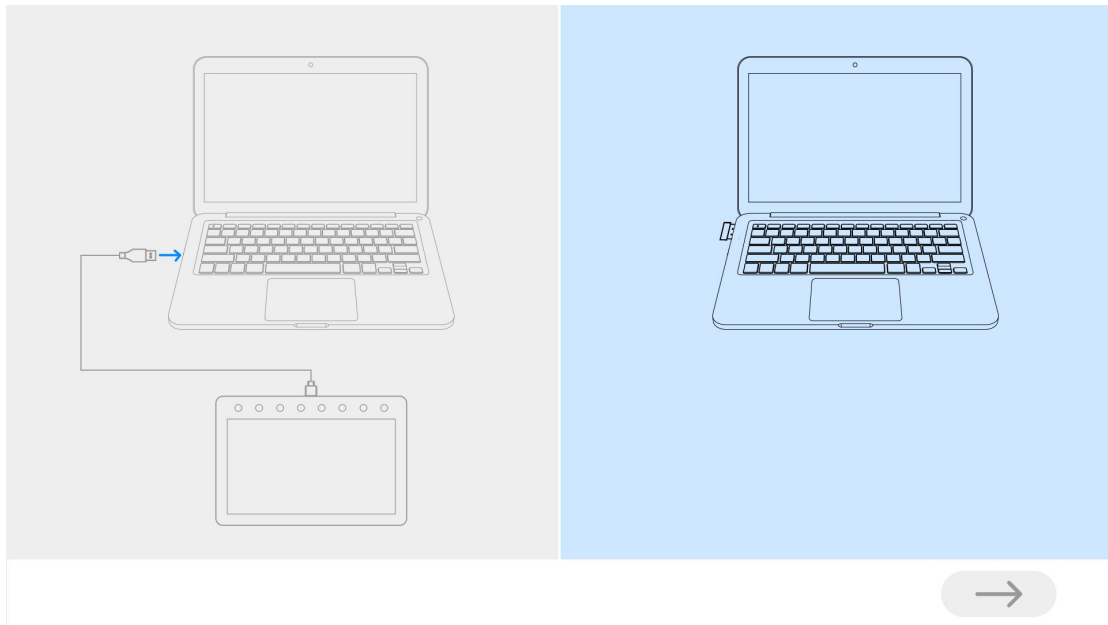


Figure 3--Wireless receiver connected to the computer

Step 2: Click the blue arrow to pair (about 2S)

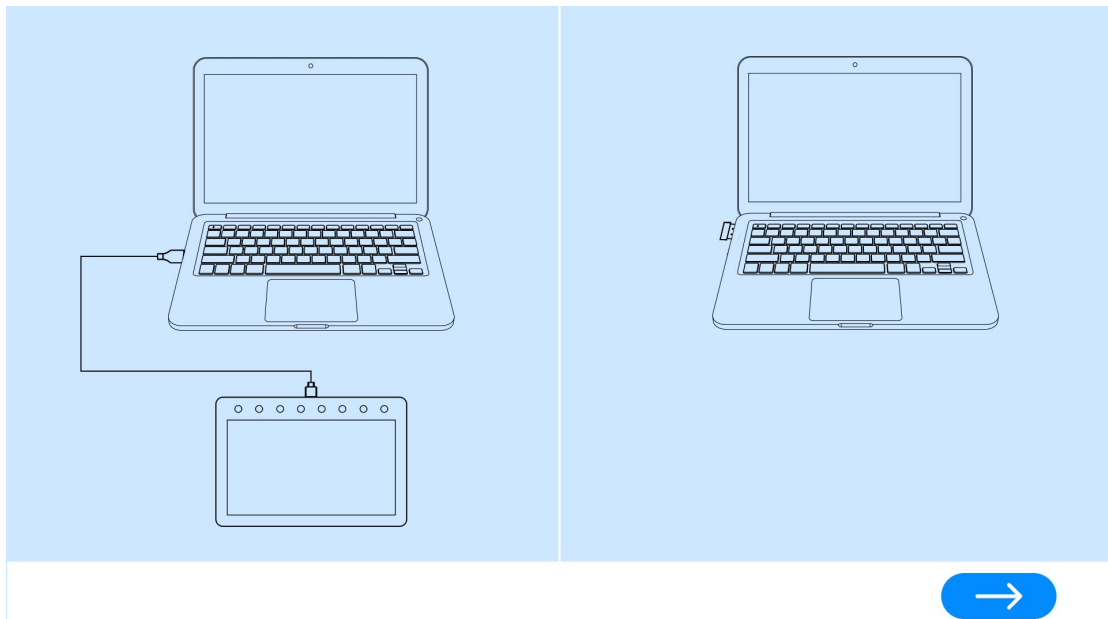


Figure 4--Hand-painted board & wireless receiver connected to the computer at the same time

Step 3: After the pairing is successful, unplug the USB cable and wireless receiver, reinsert the wireless receiver, and restart the hand-drawn board

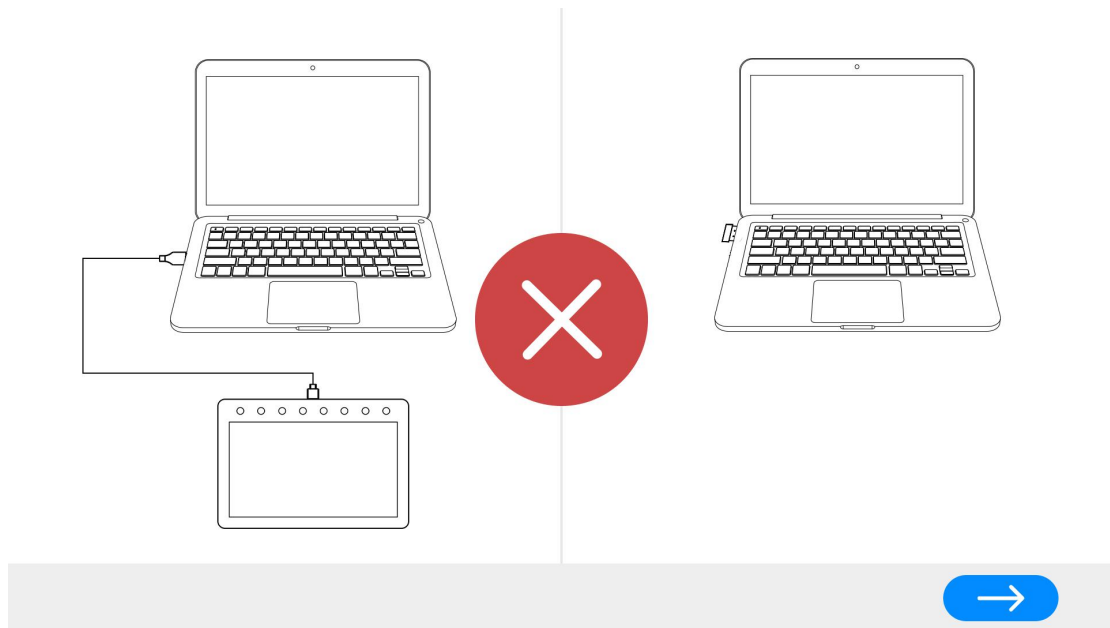


Figure 5-- Pairing failure,, Pairing failed

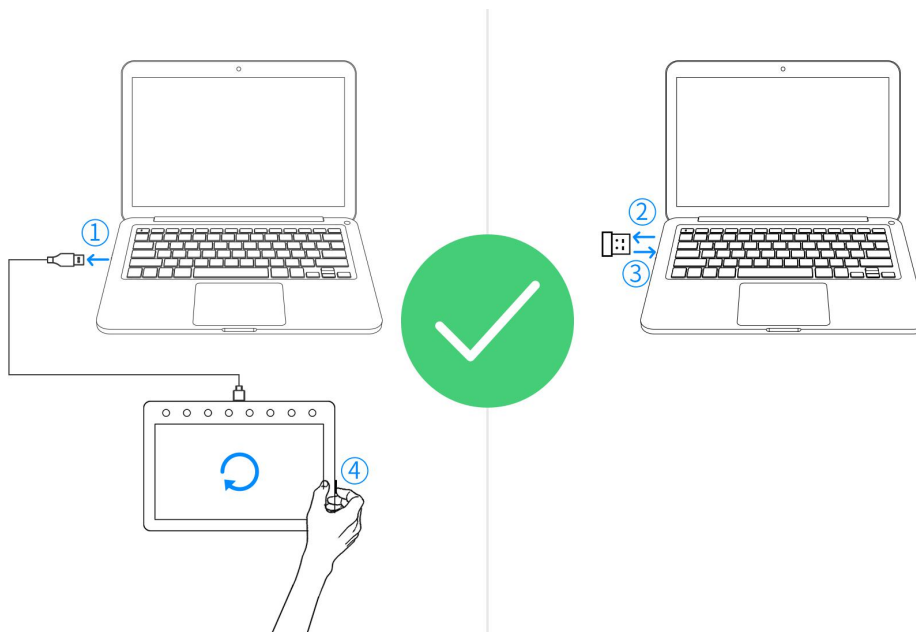


Figure 6- Successful pairing

1. Remove the USB connection of the computer
2. Remove the wireless receiver
3. Replug the wireless receiver
4. Restart the hand-painted board

FCC regulatory conformance:

This device complies with Part 15 of the FCC Rules. Operation is subject to the following two conditions:

- (1) This device may not cause harmful interference.
- (2) This device must accept any interference received, including interference that may cause undesired operation.

NOTE: This equipment has been tested and found to comply with the limits for a Class B digital device, pursuant to part 15 of the FCC Rules. These limits are designed to provide reasonable protection against harmful interference in a residential installation.

This equipment generates uses and can radiate radio frequency energy and, if not installed and used in accordance with the instructions, may cause harmful interference to radio communications. However, there is no guarantee that interference will not occur in a particular installation. If this equipment does cause harmful interference to radio or television reception, which can be determined by turning the equipment off and on, the user is encouraged to try to correct the interference by one or more of the following measures:

- Reorient or relocate the receiving antenna.
- Increase the separation between the equipment and receiver.
- Connect the equipment into an outlet on a circuit different from that to which the receiver is connected.
- Consult the dealer or an experienced radio/TV technician for help

NOTE: The manufacturer is not responsible for any radio or TV interference caused by unauthorized modifications to this equipment. Such modifications could void the user's authority to operate the equipment.

RF Exposure

This equipment complies with FCC radiation exposure limits set forth for an uncontrolled environment.