

STATIONPC

Product: Octa-Core 8K AI Industrial Computer

Model: EC-R3588SPC FD

FCC ID : 2AKCT-ECR3588SPCFD



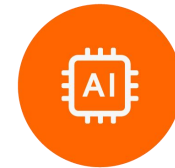
V1.0

Product features



8-Core 64bit processor

8-Core 64bit processor RK3588S
up to 2.4GHz
8nm lithography process



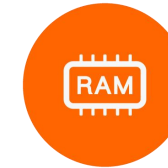
GPU / VPU / NPU

OpenGL ES3.2/2.0 , Vulkan1.1
8K@60fps H.265/VP9 Decoding
8K@30fps H.265/H.264 Encoding
6TOPS NPU computing power



Operating systems

Android 、
Ubuntu(desktop & Server)



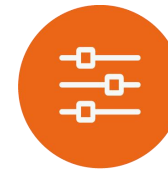
Super-large 32GB RAM

Up to 32GB RAM
Support
LPDDR4/LPDDR4x/LPDDR5



Fanless design

industrial-grade all-metal
enclosure, a fanless design,
efficient heat dissipation and stays
completely silent



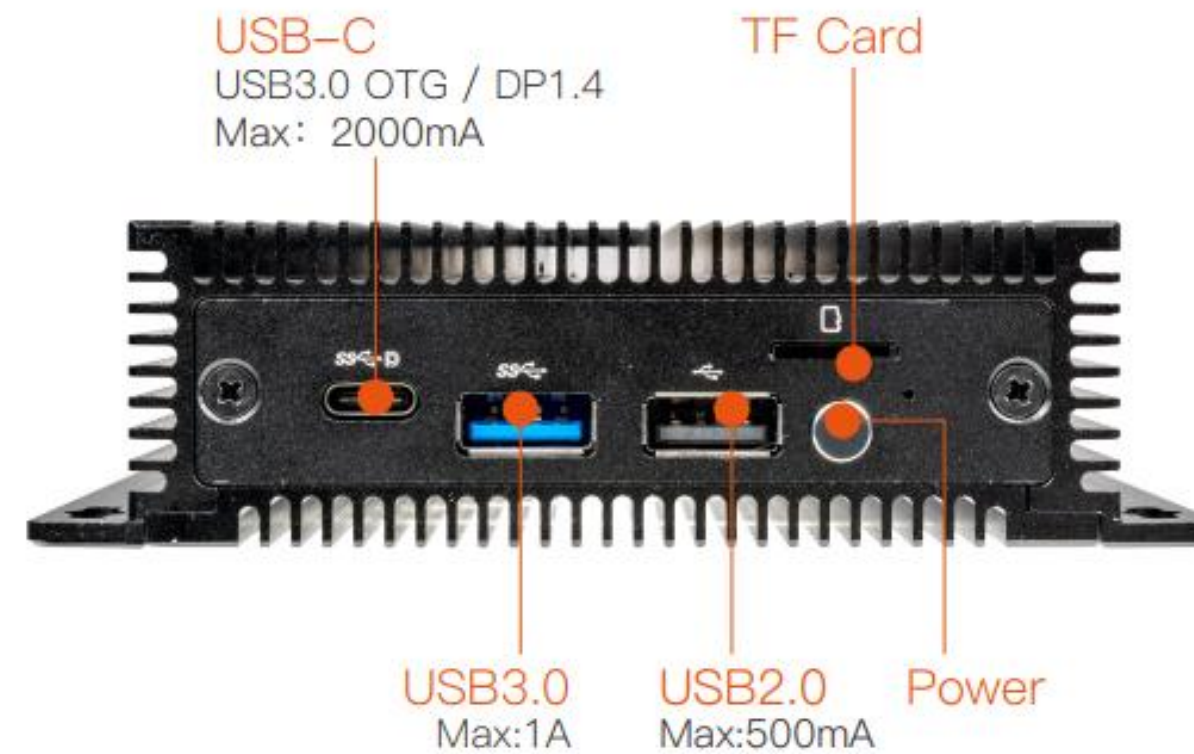
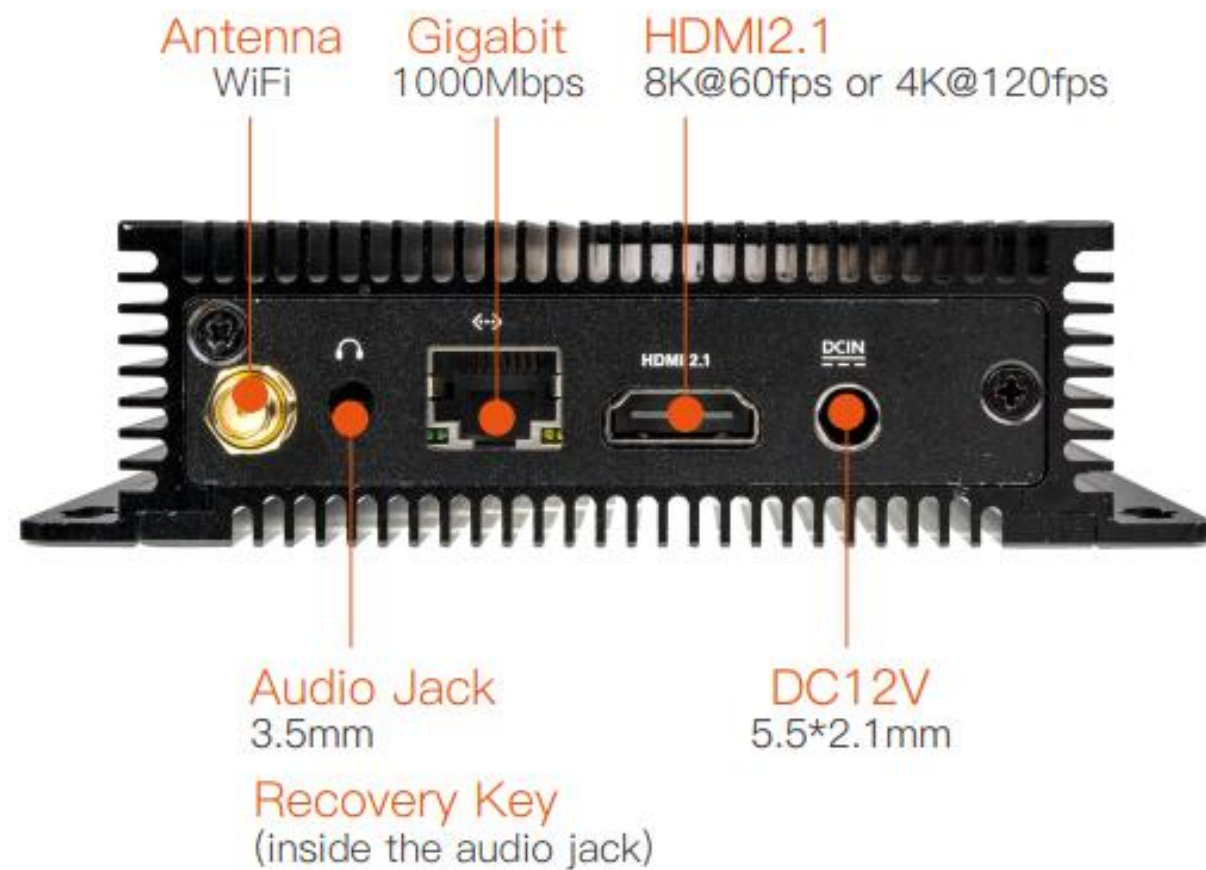
A variety of interfaces

HDMI2.1、Gigabit(1000Mbps)
USB3.0、USB2.0、USB-C (OTG /DP)

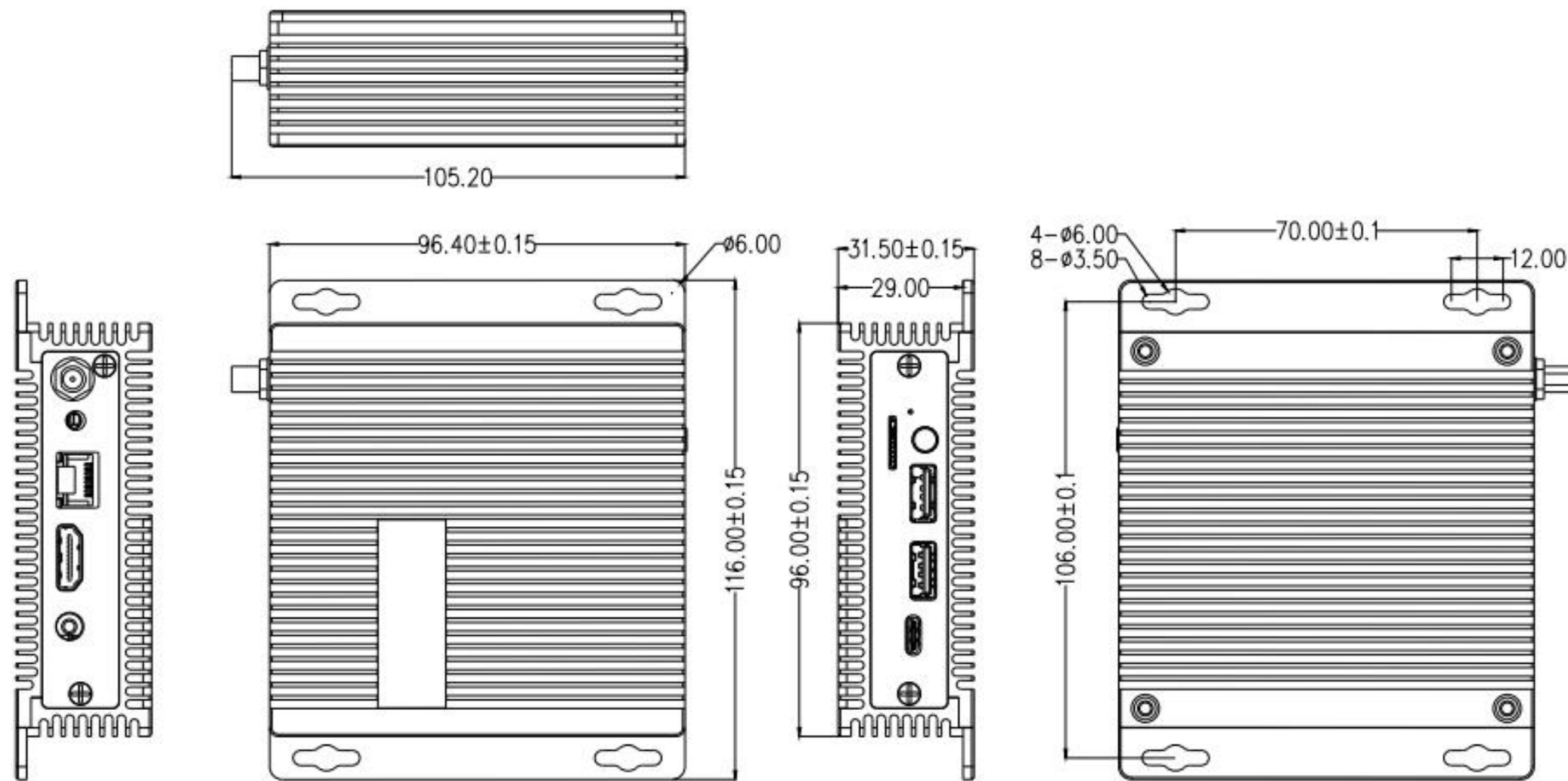
Specifications

Specifications	
SOC	RK3588S
CPU	8-64bit (4×Cortex-A76+4×Cortex-A55) , 8nm lithography process, up to 2.4GHz
GPU	ARM Mali-G610 MP4 GPU , Support OpenGL ES3.2 / OpenCL 2.2 / Vulkan1.1, 450 GFLOPS
NPU	6 TOPS , Support INT4/INT8/INT16 mixed operation,Support framework switching of TensorFlow / MXNet / PyTorch / Caffe
Codecs	Decoding : 8K@60fps H.265/VP9/AVS2、 8K@30fps H.264 AVC/MVC、 4K@60fps AV1、 1080P@60fps MPEG-2/-1/VC-1/VP8 Encoding : 8K@30fps H.265 / H.264
RAM	4GB/8GB/16GB/32GB LPDDR4
Storage	32GB/64GB/128GB/256GB eMMC
Storage Expansion	1 * TF Card
Ethernet	1 * Gigabit Ethernet (1000Mbps / RJ45)
Wireless	2.4G Hz/5GHz (5G full band) WiFi, 802.11 a/b/g/n/ac、 Bluetooth 4.2
Video	1 * HDMI2.1 (8K@60fps或4K@120fps) 、 1 * DP1.4 (8K@30fps) , Support dual screen output with different displays
Audio	1 * 3.5mm Audio jack (support Mic) 、 1 * HDMI2.1 Audio output 、 1 * DP1.4 Audio output
USB	1 * USB3.0 (Max:1A) 、 1 * USB2.0 (Max:500mA) 、 1 * USB-C (USB3.0 OTG / DP1.4) (Max:2A)
Power	DC 12V (5.5*2.1mm)
OS	Android , Ubuntu (desktop and Server)
Dimension	116mm * 96.4mm * 31.5mm
Weight	≈ 0.43kg
Power Consumption	Idle: ≈0.48W (12V/40mA), Typical: ≈1.8W(12V150mA), Max: ≈12W(12V/1A)
Environment	Operating temperature: -20°C-40°C , the product uses the adapter equipped with the machine for power supply. Operating temperature: -20°C-60°C, the product should use the adapter(a maximum ambient temperature is 60°C) for power supply.Storage Temperature: -20°C ~ 70°C , Storage Humidity: -40% ~ 70 %

Interface description



Dimension



FCC Warning

This device complies with part 15 of the FCC Rules. Operation is subject to the following two conditions:

- (1) this device may not cause harmful interference, and
- (2) this device must accept any interference received, including interference that may cause undesired operation.

Any changes or modifications not expressly approved by the party responsible for compliance could void the user's authority to operate the equipment.

NOTE: This equipment has been tested and found to comply with the limits for a Class B digital device, pursuant to Part 15 of the FCC Rules. These limits are designed to provide reasonable protection against harmful interference in a residential installation. This equipment generates, uses and can radiate radio frequency energy and, if not installed and used in accordance with the instructions, may cause harmful interference to radio communications. However, there is no guarantee that interference will not occur in a particular installation.

If this equipment does cause harmful interference to radio or television reception, which can be determined by turning the equipment off and on, the user is encouraged to try to correct the interference by one or more of the following measures:

- Reorient or relocate the receiving antenna.
- Increase the separation between the equipment and receiver.
- Connect the equipment into an outlet on a circuit different

from that to which the receiver is connected.

- Consult the dealer or an experienced radio/TV technician for help. To maintain compliance with FCC's RF Exposure guidelines, This equipment should be installed and operated with minimum distance between 20cm the radiator your body: Use only the supplied antenna.