

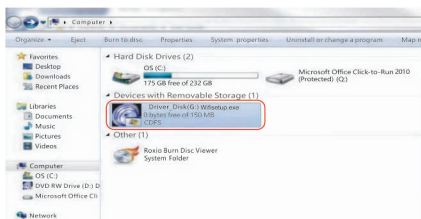
2 IN 1 USB Adapter Installation

Step 1 Install the Adapter Connect to a Computer



Step 2 Install Driver

a.Go to My Computer or This PC.

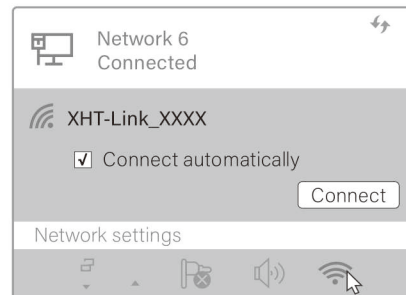


b.Double click the CD-ROM,then run SetupInstall.exe



Step 3 Join a Wireless Network

- Click the network icon (signal or globe) on the taskbar.
- Select your Wi-Fi network, enter the password when prompted.

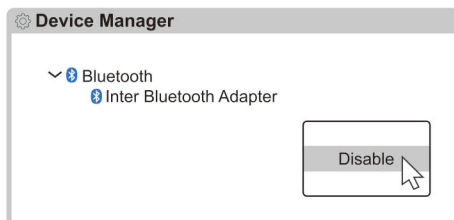


Notes: If you cannot find the setup program,
please download the driver at:
<https://bit.ly/3DSOaEL>



Check if there is built-in Bluetooth in your computer before use Bluetooth, need to disable :

Press the " Windows"+"X" to select "Device
Manager",If there is a "Bluetooth" icon in the "
Device Manager",please follow the steps below
to disable it;if not,please skip this part



Pair With Bluetooth Devices

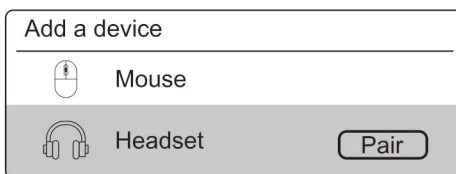
a. Right-click the Bluetooth icon on the
taskbar

Note
if the Bluetooth icon is not displayed, refer to FAQ > Q4

b. Select **Add a Bluetooth Device** or **Add a
Device** to scan for available devices.

c. Select your Bluetooth device from the list
and follow the onscreen instructions to
complete pairing

Note:
Make sure your device's Bluetooth is enabled and
discoverable.



Frequently Asked Questions(FAQ)

1.Why Slow speed or Unstable connection?

- Check Wi-Fi signal strength. If signal is weak,
move the computer closer to your router if
possible
- Try to switch between the 2.4G and 5G channels.
if it's a dual-band adapter.
- Connect to the USB 3.0 port on your computer
(if it's a USB 3.0 network card).

2.Why cannot connect to Wi-Fi

- Try to turn off and turn on/reboot your wireless
clients to connect to the Wi-Fi.(Computer and
Router)
- If the IP address is not obtained automatically,
change it to Obtain IP Address Automatically.
- Change router's wireless channel.

3.Why doesn't show WiFi6?

- If you purchased a Wi-Fi6 adapter,need pairing
it with a Wi-Fi6 router,can achieve optimal
performance

4.What should I do if the Bluetooth or Wi-Fi icon doesn't appear?

- Make sure you have turned on the Bluetooth or
Wi-Fi in Windows settings

NOTE: This equipment has been tested and found to comply with the limits for a Class B digital device, pursuant to part 15 of the FCC Rules. These limits are designed to provide reasonable protection against harmful interference in a residential installation. This equipment generates, uses and can radiate radio frequency energy and, if not installed and used in accordance with the instructions, may cause harmful interference to radio communications. However, there is no guarantee that interference will not occur in a particular installation. If this equipment does cause harmful interference to radio or television reception, which can be determined by turning the equipment off and on, the user is encouraged to try to correct the interference by one or more of the following measures:

- Reorient or relocate the receiving antenna.
- Increase the separation between the equipment and receiver.
- Connect the equipment into an outlet on a circuit different from that to which the receiver is connected.
- Consult the dealer or an experienced radio/TV technician for help

Changes or modifications not expressly approved by the party responsible for compliance could void the user's authority to operate the equipment.

This device complies with Part 15 of the FCC Rules. Operation is subject to the following two conditions:

(1) this device may not cause harmful interference, and (2) this device must accept any interference received, including interference that may cause undesired operation.

For USA: The frequency stability of all transmission frequencies of U-NII-1 and U-NII-3 meets the requirements of 47 CFR FCC Part15.407(g), and the manufacturer declares that their transmission is maintained at Band U-NII-1 and U-NII-3.