

A3 Single/Double Channel Touch Screen Free Stick-on Transmitter Operating Manual

Company reserves the right to change product design and specifications without prior notice then , photos are for reference only.

A/2 H12020

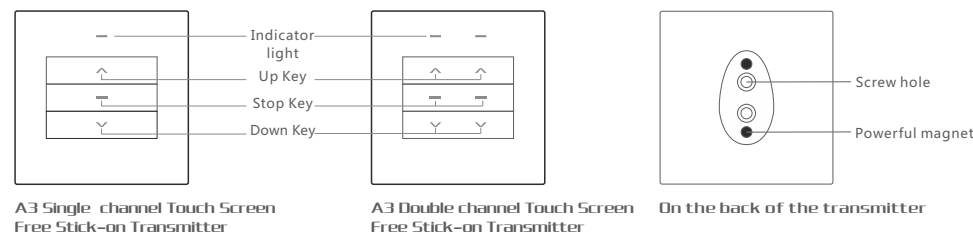
Product Features

- H** Flat Panel High hardness surface, excellent transparently
 - K** Touch screen fashion trend
 - J** Jogging move and continuous move control individually
 - S** 868MHz radio frequency has high sensitivity
 - C** Powerful magnet in back, stick to the wall conveniently
- A3 Touch Screen Free Stick-on Transmitter use 868 MHZ radio frequency, Remote-controlled distance is above 100m(visual-range), two reinforced concrete wall at least 30 m. 868 MHz radio frequency with a strong anti-jamming capability, high receiving sensitivity, stable center frequency and convenient debugging, etc function in wireless communications.

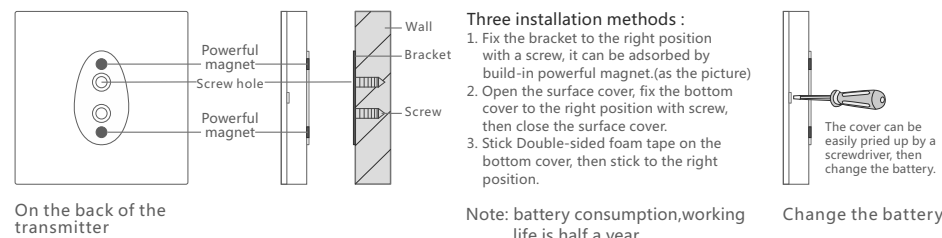
Working power supply :
3V button cell (CR2430)
Working frequency : 868MHz
Transmit power: 10mW
Working Temperature :
-20°C ~ 70°C
Working Humidity: (Max90%)

Note: electronic products need dampproof , can not use in high humidity with a long time.

Key functions

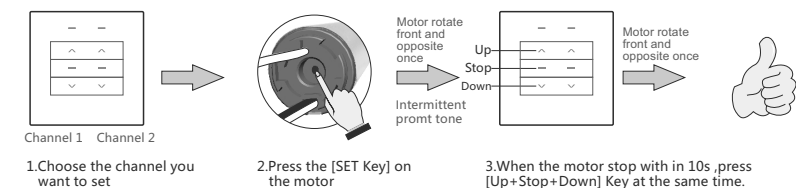


Install Sketch Map & Change the battery

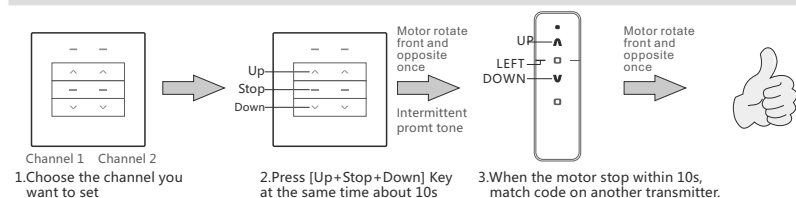


Programming operation method (FOR EXAMPLE: E24-EL-SA-1 VENETIAN MOTOR)

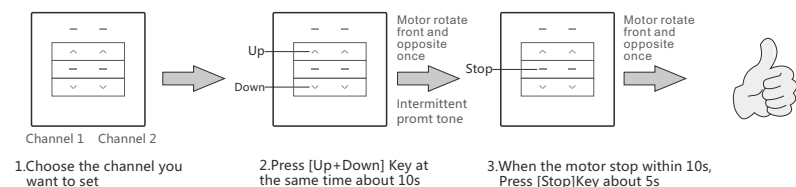
Match Code: The transmitter must match code with receiver, and then the receiver can be remote control by transmitter. * Repeat operating match code procedure once can delete the code (Delete code on transmitter).



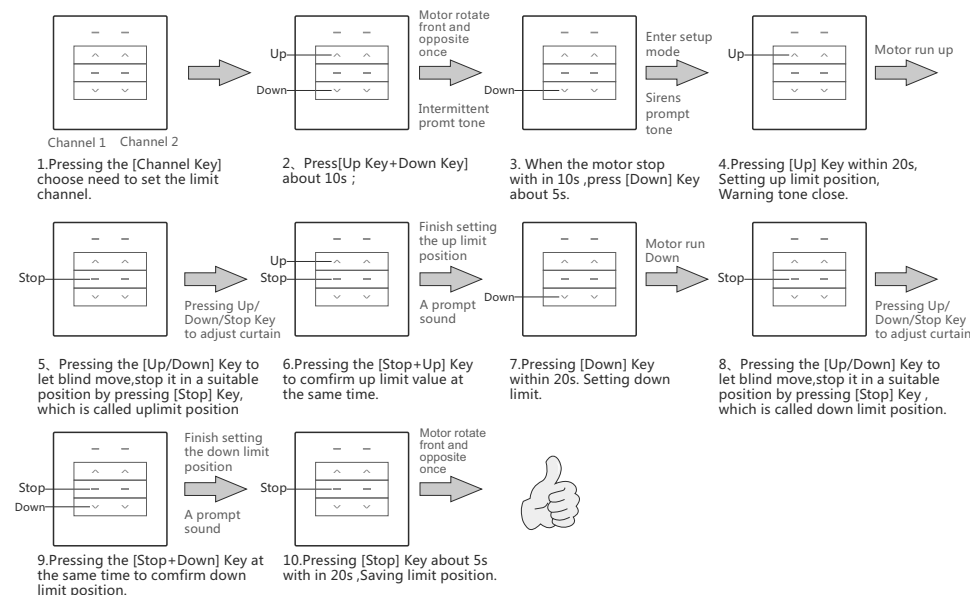
Channel copy: Increased another transmitter for the setting done transmitter, and the receiver can be control by multiple transmitter.



Change the direction: Change the direction for the code settled receiver. for example, before direction changed, if you press the Up Key on the Transmitter the curtain will go downwards , while after direction changed , curtain will go upwards when you press the Up Key !

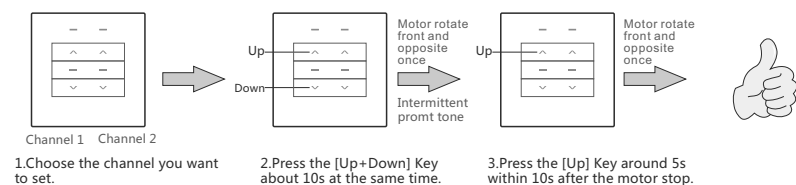


Up/Down limit setting: Up/Down limit means curtain run Up/run Down can reach high/low position. This function is only applicable to electronic limit function of the receiver(motor)



*Note: If you want to reset the limit position. Again operate Up/Down limit set up step.
**Note: Different motor have different prompting mode, please refer detail with specification.

Inching/Continuous move mode change: Switch key function for the code settled receiver (motor) after the switch , receiver (motor) rotate little if you press the Up or Down key on the transmitter (N09-N16 without this function)



Warning Statement

This device complies with part 15 of the FCC Rules. Operation is subject to the following two conditions: (1) This device may not cause harmful interference, and (2) this device must accept any interference received, including interference that may cause undesired operation.

Any Changes or modifications not expressly approved by the party responsible for compliance could void the user's authority to operate the equipment.

Note: This equipment has been tested and found to comply with the limits for a Class B digital device, pursuant to part 15 of the FCC Rules. These limits are designed to provide reasonable protection against harmful interference in a residential installation. This equipment generates uses and can radiate radio frequency energy and, if not installed and used in accordance with the instructions, may cause harmful interference to radio communications. However, there is no guarantee that interference will not occur in a particular installation. If this equipment does cause harmful interference to radio or television reception, which can be determined by turning the equipment off and on, the user is encouraged to try to correct the interference by one or more of the following measures:

- Reorient or relocate the receiving antenna.
- Increase the separation between the equipment and receiver.
- Connect the equipment into an outlet on a circuit different from that to which the receiver is connected.
- Consult the dealer or an experienced radio/TV technician for help.

The device has been evaluated to meet general RF exposure requirement. The device can be used in portable exposure condition without restriction.