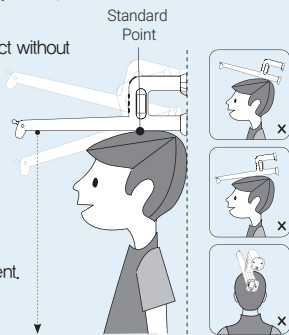


## | Precautions |

- This product measures height using ultrasonic waves.
- Don't block the ultrasonic waves generator(sensor).
- The angle of ultrasonic waves from the generator tend to spread up to 30 degree. Measures can be failed if there are obstacles near by
- Please do not measure on the soft floors such as carpet, rug and blanket.
- It can cause injuries if children touch or drop the product. Please be careful when handling and storing.
- Do not touch the product in wet condition. Humidity may cause the electronic shock. Please be careful
- Don't clean the product with water or sink it, It may cause malfunction.
- Please do not fix the broken pieces yourself, contact to the service center.
- In case of disassembling the product without permission, the free warranty will not be guaranteed.
- Please do not store where there are sunlight, heat transfer equipments, and rapid temperature changes.
- Specifications are subject to change without notice for product improvement.



## | Warranty |

This warranty covers the contents of the product purchased by the consumer under Fundementatl Law. In the event of a failure within one year of purchase (including batteries) under normal use, we will repair or replace them free of charge in accordance with the warranty regulations. Even within the period of a free repair, the repair cost will be charged if a fault or damage caused by users' mistake or modification, submersion, misuse, abuse, natural disaster etc., or if the warranty is not presented

※ The use of this product shall not be liable for any damage or loss caused by the device or for any claims made by a third party.

### • Customer Support

Please contact below if any problem is found.

[www.qoolsystem.com](http://www.qoolsystem.com)

### • Contact Phone : +82)2-762-8977

AM 9:30 ~ PM 6:00 (Closed on weekends and holidays)

Product Name	Smart Remote Extensometer
Model Number	QSHM-0B
Purchase Date	
Name	
Address	
Contact	

MSIP-REM-QOL-QSHM-0B

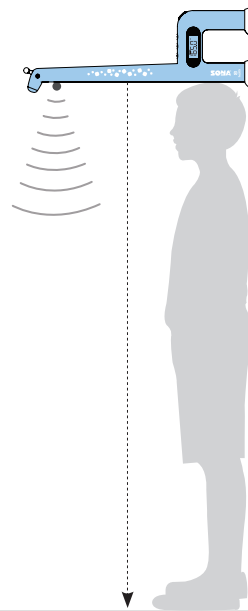
Innovative Item For Growing Children



## Easiest & Fastest Height Measure



M | a | n | u | a | l



(주)쿨시스템

[www.qoolsystem.com](http://www.qoolsystem.com)

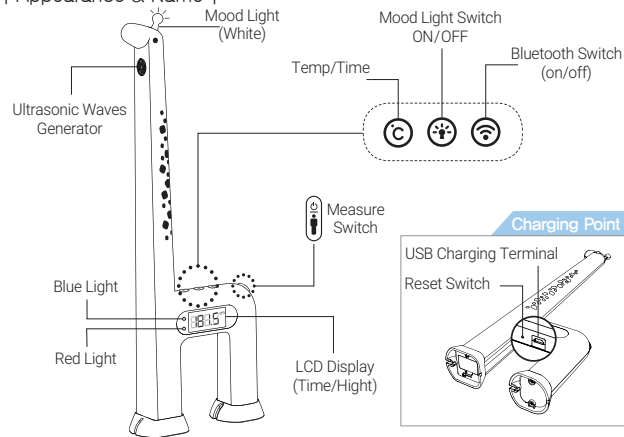
Customer Service Center

Tel. +82)2-762-8977

This product simply measures height by using ultrasonic waves.  
Please read the manual for safe and appropriate uses.

★ Check children's height and health with SONA app.★

| Appearance & Name |



**NOTE** Press buttons of SONA lightly

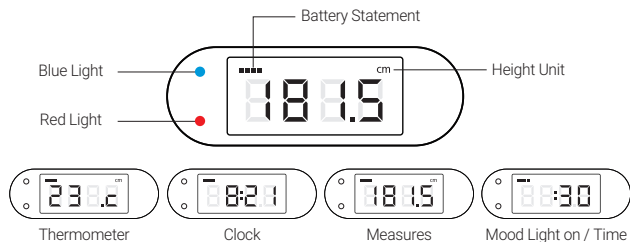
Ⓒ First press for the thermometer setting, Second press for the clock.

ex) Thermometer 23.2 °C Clock 8:21

- Press the button for the mood light(white), it goes out after set time later.
- Press buttons each time for turning on/off the bluetooth connection.
  - Please press the [Measure] button, when SONA is trying to connect to Bluetooth. At this time, the blue and red light on LCD display blink alternately.
  - The Blue Light goes on if bluetooth is connected correctly.

★ Check children's growth periodically.★

| LCD and LED Sign Guide |



● LED Sign Guide

Blue Light	Red Light	Action
Blink	Blink	Trying to connect Bluetooth (60 sec)
ON	OFF	Connected Bluetooth Correctly
OFF	ON	Battery Charging Complete
OFF	Blink	Battery Charging



- It shows up when it measures under 50cm, over 200cm, when there are obstacles, or when it is in non-horizontal and vertical condition. Please try again.
- ※ It will automatically show, after 10 seconds.



- This sign means the low battery statement.
- Please use after charging.

★ Increase Children's height by smart management system★

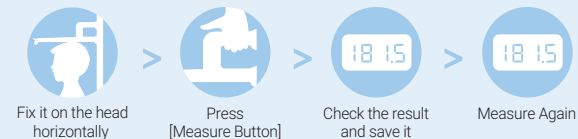
| How to Measure |

>> Measure with Bluetooth



※ When you measure, please press [Measure Button] lightly

>> Measure Directly



| Appropriate Measurement Process |

- Clean the floor[No Obstacles Required]
- Take off outers.
- Straighten the back and hold the correct position.
- Fix the product on the head horizontally and vertically.
- If everything is ready, press the [Measure] button lightly.
- The LCD display shows the result after measurement.

**For a Class B digital device or peripheral, the instructions furnished the user shall include the following or similar statement, placed in a prominent location in the text of the manual:**

NOTE: This equipment has been tested and found to comply with the limits for a Class B digital device, pursuant to part 15 of the FCC Rules. These limits are designed to provide reasonable protection against harmful interference in a residential installation. This equipment generates, uses and can radiate radio frequency energy and, if not installed and used in accordance with the instructions, may cause harmful interference to radio communications. However, there is no guarantee that interference will not occur in a particular installation. If this equipment does cause harmful interference to radio or television reception, which can be determined by turning the equipment off and on, the user is encouraged to try to correct the interference by one or more of the following measures:

- Reorient or relocate the receiving antenna.
- Increase the separation between the equipment and receiver.
- Connect the equipment into an outlet on a circuit different from that to which the receiver is connected.
- Consult the dealer or an experienced radio/TV technician for help.

**This device complies with Part 15 of the FCC Rules.**

**Operation is subject to the following two conditions: (1) this device may not cause harmful interference, and (2) this device must accept any interference received, including interference that may cause undesired operation.**

**FCC CAUTION:**

Any changes or modifications in construction of this device which are not expressly approved by the party responsible for compliance could void the user's authority to operate the equipment.

**FCC NOTE:**

The manufacturer is not responsible for any radio or TV interference caused by unauthorized modifications to this equipment. Such modifications could void the user's authority to operate the equipment.

---