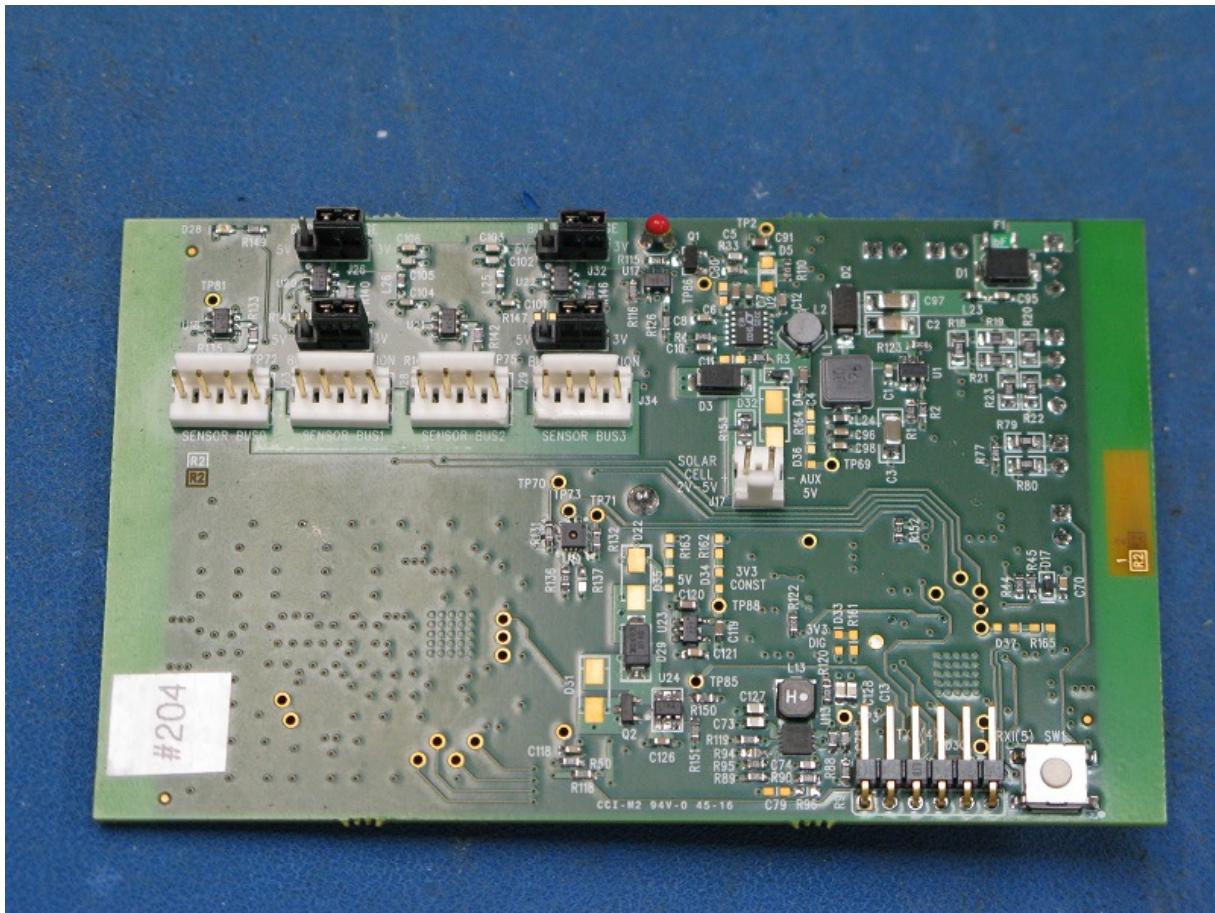
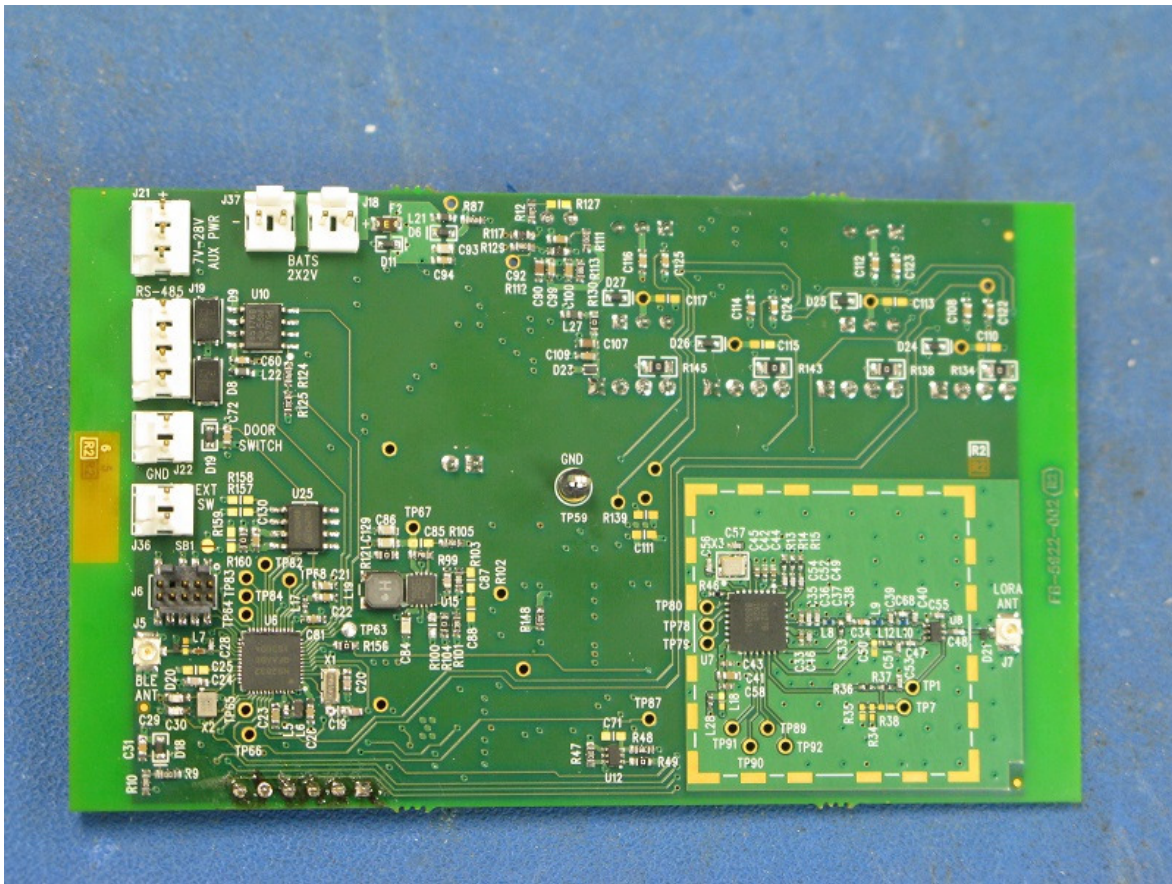


Major Components of the Transmitter: Green PCB (mounted vertically in enclosure) containing all digital circuitry and 2.4GHz BLE and 900MHz LoRa radios, two lead-acid batteries (cylindrical parts), and solar panel adhered to the enclosure cover (on the right)

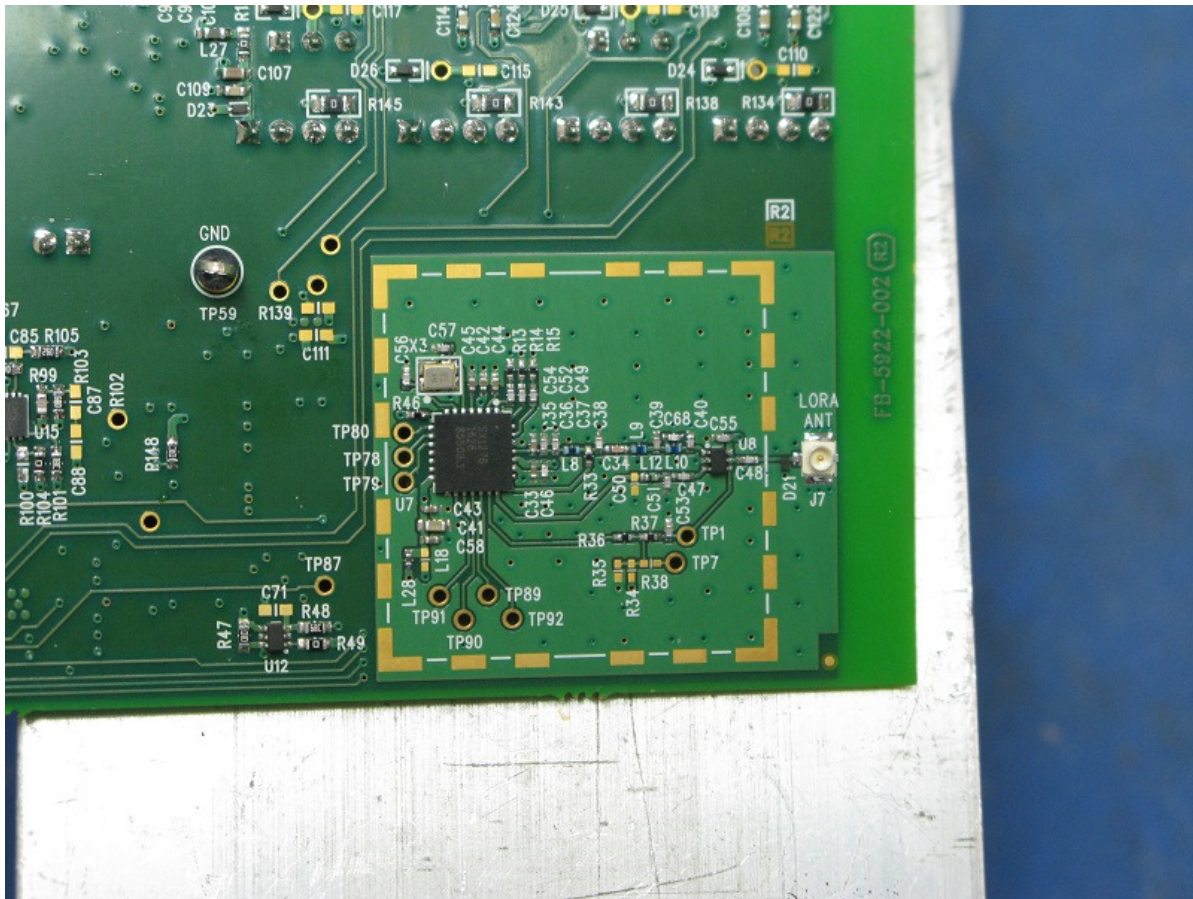


Populated Transmitter PCB (top side)



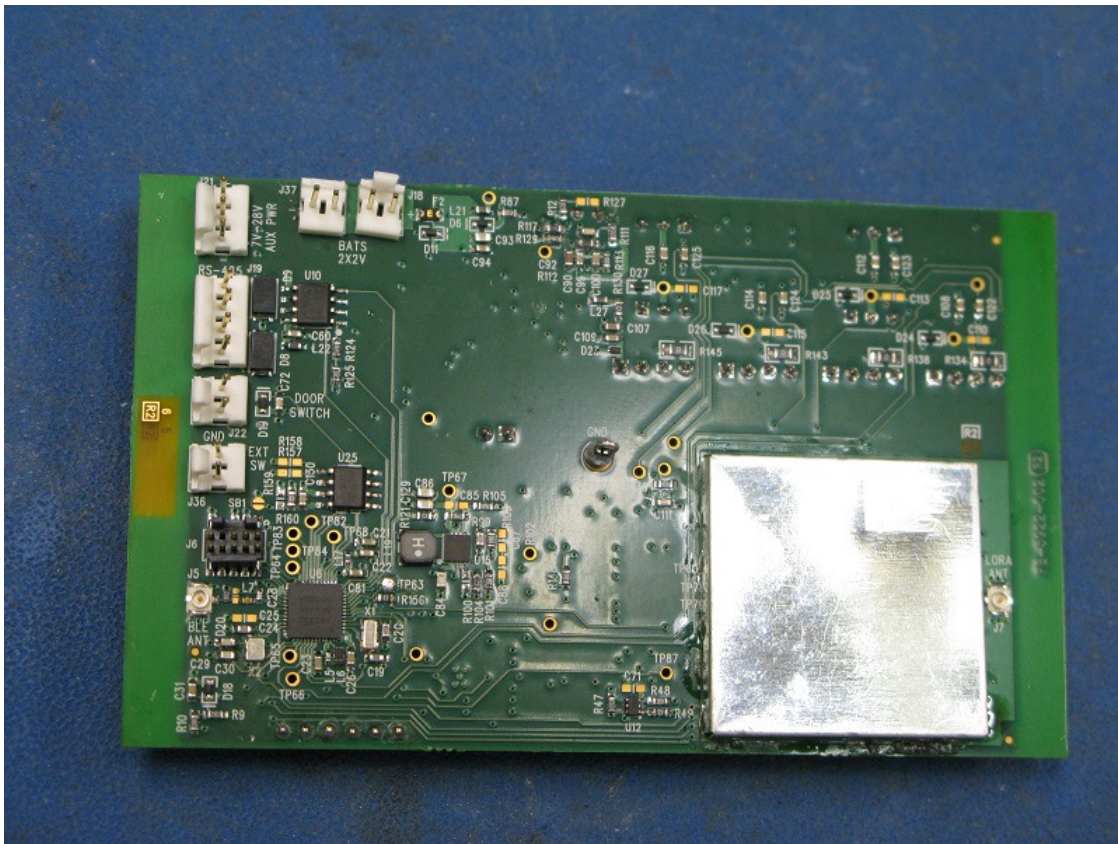


Populated Transmitter PCB (bottom side); 2.4GHz BLE radio & 900MHz LoRa radio shown; 900MHz LoRa radio is shown without the RF shield installed (on the bottom-right corner of this picture)

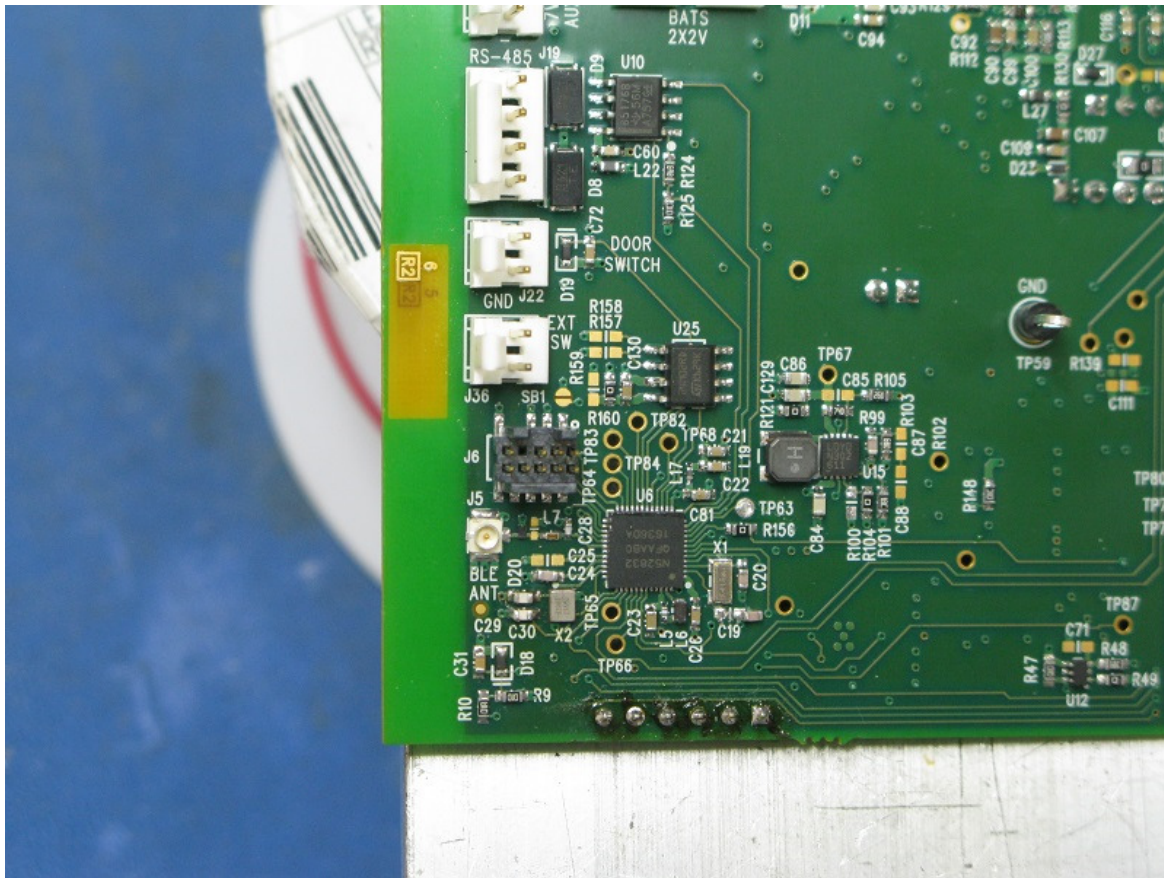


Close-up view of the 900MHz LoRa radio, shown without the RF shield installed





900MHz LoRa radio with the RF shield installed; note the antenna connector (J7) is outside the RF shield, and connects to external antenna through an U.FL-RPSMA(F) transition RF cable



Close-up view of the 2.4GHz BLE radio; note the antenna connector (J5) connects to external antenna through an U.FL-RPSMA(F) transition RF cable