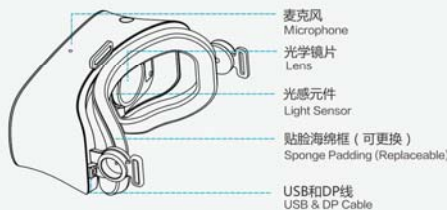


多功能按钮  
Function Button  
LOGO指示灯  
Logo Indicator

02



麦克风  
Microphone  
光学镜片  
Lens  
光感元件  
Light Sensor  
贴脸海绵框 (可更换)  
Sponge Padding (Replaceable)  
USB和DP线  
USB & DP Cable

03

## 3Wand介绍 / 3Wand Introduction

3Wand是由3Glasses自主研发设计的空间定位解决方案。它主要应用于室内娱乐。3Wand is the position tracking solution by 3Glasses, it allows user to have position tracking function indoor.

一套空间定位系统包括:  
2个游戏手柄; 1个摄像头;  
Position Tracking System includes:  
2\*3Wand-Controller;  
1\*3Wand-Camera;

温馨提示: 手柄不分左右, 外观功能一模一样。  
Tips: Two controllers are identical.

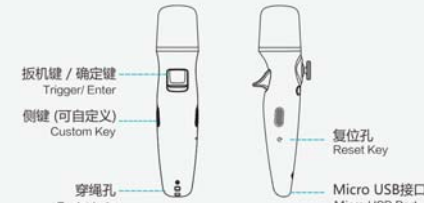
04

## 手柄外观 / Controller Outlook



3Wand-Controller 是您在虚拟世界里的双手, 它可以带给您全新的游戏体验。3Wand-Controller is your hand in the virtual reality world, they can bring you brand new gaming experience.

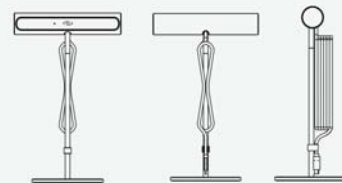
05



扳机键 / 确定键  
Trigger/Enter  
侧键 (可自定义)  
Custom Key  
复位孔  
Reset Key  
穿绳孔  
Eyelet hole  
Micro USB接口  
Micro USB Port

06

## 摄像头外观 / Camera Outlook



3Camera是一款红外摄像头, 用于拍摄室内环境下的红外光源, 它能精确的捕捉手柄上的红外光源并定位。3Camera is an infrared camera, which is use to track user's position.

07

## 娱乐范围 / About the Play Area

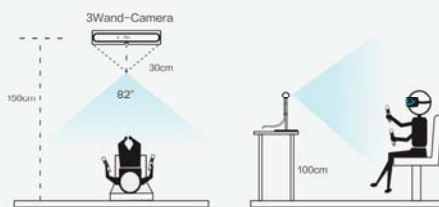
您的VR娱乐被限定在规定的范围内。娱乐范围的高度由摄像头的可捕捉范围决定, 宽度和深度如下一页所示。  
Use your VR device within the play area. The height of the play area depends on the range covered by the camera. The width and depth of the play area are shown in the illustration on the following page.

提前整理出一块大于娱乐范围的场地。  
Clear an area larger than the play area before using.

温馨提示: 太强的光线可能会影响摄像头的追踪功能。  
Tips: Intense light may influence the tracking function.  
不建议在户外使用本产品。  
For better performance, it is not recommended to play outdoor.

08

## 追踪范围 / Tracking Range



声明: 追踪范围会受到现场环境因素影响。  
Disclaimer: Tracking range can be affected by the environment.

09

## 使用 / Using

### 连接方式 / Connection

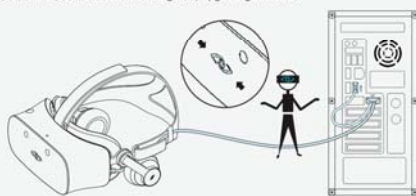
头盔连接电脑  
Plug your headset into your PC



温馨提示: 请先将DP线接入电脑的独立显卡, 然后再连接USB接口, 正确连接后, 头盔前方的LOGO灯会呈蓝色闪烁后长亮。  
Tips: Please plug the DP cable to graphics card first, and then plug the USB cable to PC. Afterwards, The logo LED will be lighting blue after flashing.

10

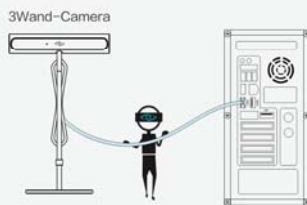
头盔状态LOGO指示灯 / The logo LED indicator at front  
蓝色: 头盔正常运行状态 / Color Blue, Normal Operation  
黄色闪烁: 头盔正在初始化 / Flashing Yellow, Initialization  
红色闪烁: 头盔处于更新固件状态 / Flashing Red, Upgrading Firmware



温馨提示: 每次开机, 都必须将头盔放在水平桌面上静置6秒, 让陀螺仪自动校准。  
Tips: Every time when you turn the headset on, gyroscope will take 6 secs for automatic calibration. Therefore, please put the headset on a horizontal desktop for a while.

11

## 摄像头连接电脑 Plug your camera into your PC



将3Wand-Camera的USB接口插入电脑, 启用摄像头时上面指示灯会亮起绿色。  
Plug USB cable into PC (USB 2.0 or higher), When camera start working, the LED will turn green.

12

## 手柄连接电脑 Connect your controller with your PC

按下手柄上的开关机键, 手柄上的logo灯亮起蓝色, 则说明手柄已经正常启动。  
Turn on the 3Wand-Controller, once the logo LED turns blue the 3Wand-Controller is ready to use.

温馨提示:  
任何无线信号 (例如Wi-Fi, 4G, 蓝牙等) 都会干扰手柄的连接, 所以在初次连接时尽量远离无线信号源 (例如手机, 路由器等)。  
Tips: Any wireless signal (such as Wi-Fi, 4G, Bluetooth and etc) will influence the connection, please keep away from these signal sources (such as mobile phone, router and etc).

每对手柄在出厂时已经做好匹配, 用户不需要进行匹配。  
Each pair of controllers have already been paired, user do not have to do the pairing again.

13

## 安装VRSHOW / Install VRSHOW

VRSHOW是3Glasses推出的内容管理平台, 使用它可轻松便捷的管理VR设备和内容资源。VRSHOW is a client which is developed by 3Glasses, it is used to manage VR device and content.



## 调整瞳距 / Adjust Pupil Distance

按图中指示, 调整瞳距, 直到眼前图像清晰完整。  
As the figure shown, adjust the pupil distance until display is clear.



温馨提示: 最大瞳距调节范围是14mm (单眼可最多调节7mm)  
Tips: The maximum adjustable range is 14mm (7mm for each eye)

17

## 选你想玩的 / Select Your Favorites



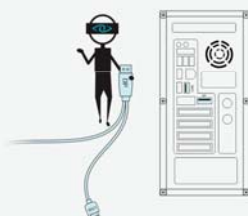
您可以直接通过VRSHOW的在线资源模块下载您喜欢的内容。在客户端中播放。  
You can select your favorite content from the online resource page on VRSHOW client and download it.

具体使用方法, 请参考VRSHOW使用指南。  
If you want to know more about the usage, please check with the VRSHOW user manual.

18

## 结束使用 / Finish

### 断开头盔连接 / Unplug the headset from PC



注意: 若未正常关机, 下次使用可能出现闪烁情况, 需要放置一段时间后才能恢复。  
Note: If shutdown improperly, the image may flicker during the next use. Let it idle for a while then it will function normally.

温馨提示: 先拔掉DP线, 再拔掉USB线。  
Tips: Unplug the DP cable first, and then the USB cable.

19

**NOTICE:**

This device complies with Part 15 of the FCC Rules

Operation is subject to the following two conditions:

- (1) this device may not cause harmful interference, and
- (2) this device must accept any interference received, including interference that may cause undesired operation.

Changes or modifications made to this equipment not expressly approved by VR Technology(shenzhen)Limited may void the FCC authorization to operate this equipment.

NOTE: This equipment has been tested and found to comply with the limits for a Class B digital device, pursuant to Part 15 of the FCC Rules. These limits are designed to provide reasonable protection against harmful interference in a residential installation. This equipment generates, uses and can radiate radio frequency energy and, if not installed and used in accordance with the instructions, may cause harmful interference to radio communications. However, there is no guarantee that interference will not occur in a particular installation. If this equipment does cause harmful interference to radio or television reception, which can be determined by turning the equipment off and on, the user is encouraged to try to correct the interference by one or more of the following measures:

- Reorient or relocate the receiving antenna.
- Increase the separation between the equipment and receiver.
- Connect the equipment into an outlet on a circuit different from that to which the receiver is connected.
- Consult the dealer or an experienced radio/TV technician for help.

**Radiofrequency radiation exposure Information:**

This equipment complies with FCC radiation exposure limits set forth for an uncontrolled environment. This equipment should be installed and operated with minimum distance of 20 cm between the radiator and your body. This transmitter must not be co-located or operating in conjunction with any other antenna or transmitter.

