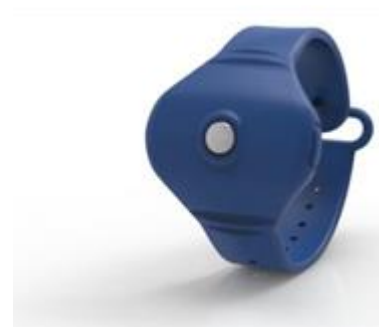


Watch-Temp™ Wearable Continuous Thermometer

User Manual



Contents

1) Introduction.....	2
2) Intended Use of the Watch-Temp	2
3) Safety Warnings.....	2
4) Product Contents.....	3
5) Instructions for Use	3
6) LED Indications	4
8) Care and Cleaning.....	4
9) Troubleshooting	4
10) Specifications.....	5
11) Service Information	6
12) Definition of Symbols	6
13) FCC Statement:.....	6
14) Electromagnetic Compatibility (EMC) Tables.....	7

1) Introduction

The purpose of this document is to describe the proper way to set up, use, and maintain the Watch-Temp wearable continuous thermometer.

The Watch-Temp and this manual are intended to be used by responsible adults in home environments. Prior to using the Watch-Temp, read and follow all instructions, labeling, and accompanying documents supplied with the Watch-Temp device. Failure to follow instructions could lead to misuse of the device, device malfunction, or injury to the wearer or operator.

2) Intended Use of the Watch-Temp

The Watch-Temp is intended to continuously monitor core body temperature of patients of all ages by applying the watch to the wrist of the wearer. The results are to be received via an application on a smart device.

The operator of the Watch-Temp may be any responsible adult (including the wearer if applicable).

3) Safety Warnings

1. The Watch-Temp™ system is designed as supplement to traditional temperature measurement and monitoring and is not a replacement for examinations by physicians or other healthcare professionals.
2. The device should not be used while the wearer is participating in physical activity. It is designed to measure under resting conditions only.
3. Do not use the device if it shows signs of physical damage.
4. Do not drop the watch or expose to heavy shock. The unit is not shock-proof.
5. Do not immerse the watch in water or another liquid. The unit is not water-proof.
6. Do not store the watch in direct sunlight, at high temperatures, in high humidity, or in dusty conditions. Improper storage may degrade the unit's performance.
7. Do not attempt to disassemble the watch.
8. Do not attempt to use any charging cable other than the one included to charge the watch. Always ensure that the charger used is compatible with the charge input rating of the device.
9. Placement and operation of the Watch-Temp™ should be performed by a responsible adult.
10. The watch should not remain on the wearer's wrist for longer than 48 hours.
11. All maintenance, repair, and modifications of the device (other than routine cleaning and charging) should be performed only by qualified personnel, not the user.
12. Do not attempt any maintenance activities while the device is in use.
13. Unauthorized modifications of the Watch-Temp device should not be attempted and may lead to device malfunction or injury to the operator or wearer.
14. The Watch-Temp contains Lithium batteries, which should be disposed of separately from general waste. Contact your local municipality's waste disposal service for detailed information of how to properly dispose of batteries.

4) **Product Contents**

1. Watch-Temp™
2. Base Unit
3. Charging cable
4. Instructions for Use

5) **Instructions for Use**

1. Install the Watch-Temp™ app on your smart device via either the Apple Store or Google Play Store.
2. Open the app and follow the on-screen instructions to set up an account for the user and a profile for the wearer.
3. Place and secure the watch on the wearer's wrist.
 - The watch should be placed slightly above the wrist, with the sensor section of the unit on the upper side of the arm.
 - The watch should be secured firmly around the wrist so that it stays in place while the wearer is moving. The watch should *not* be secured so tightly as to cause any pain or limit circulation.
 - There should not be any clothing, bandages, or other barriers separating the watch from the wearer's skin.
 - Improper placement of the device may lead to inaccurate measurements.



4. Press the button on the side of the watch to activate it. The LED on the top of the watch will blink to indicate it has been successfully activated.
5. Pair the watch with your smart device, following the on-screen instructions.
 - Make sure the watch is within 3 feet of the base unit (if applicable) or the smart device while pairing.
 - Make sure to use the proper device ID while pairing.
6. Use the app to receive continuous temperature data.
7. To terminate function of the watch, simply remove it from the wearer and it will turn off automatically after a short time.

6) LED Indications

LED Indication	Meaning
LED off	Device is off and not communicating
LED blinking once every 5 seconds	Device is functioning normally
LED blinking once every second	Device battery is low- please recharge

7) Charging

1. Remove the watch from the wearer's wrist before charging. The Watch-Temp™ is not designed to be used while charging.
2. Plug the charging cable into any USB port and clip the charging pins on the charging cable to the charging pads on the underside of the watch.
3. Do not use a charging cable other than the one provided with the Watch-Temp™.

8) Care and Cleaning

- Remove the watch from the wearer before cleaning.
- To clean, the surface may be wiped an alcohol swab or cotton swab moistened with 70% isopropyl alcohol or a soft, dry cloth.
- Never use an abrasive cleaner or submerge the watch in water or other liquids.
- After cleaning with alcohol, wait at least two minutes before reusing.
- Do not expose the watch to extreme temperatures, humidity, direct sunlight or shock.
- Store the watch at room temperature.
- The Watch-Temp™ should not require any routine maintenance beyond cleaning and charging. In the event further maintenance is required, it must be performed at the manufacturing facility.

9) Troubleshooting

Issue	Solution
App is not receiving data	<ul style="list-style-type: none"> • Ensure that the watch is properly charged and has been activated by pressing the button. • Ensure that the watch is within 3 feet of the base unit (if applicable) or the smart device. • If using the base unit, ensure that both it and the smart device are connected to the internet. • If connecting directly to a smart device, ensure the

	<p>Bluetooth feature has been activated.</p> <ul style="list-style-type: none"> Repair the device, making sure to use the proper device ID.
Consistently low temperatures detected	<ul style="list-style-type: none"> Ensure that the device has been properly placed (see section 5, step 3). Verify that the room temperature is within the acceptable range (60.8°F to 104°F). Warning! Low body temperature requires seeking immediate medical attention.
Consistently high temperatures detected	<ul style="list-style-type: none"> Ensure that the device has been properly placed (see section 5, step 3). Verify that the room temperature is within the acceptable range (60.8°F to 104°F). Warning! High fever requires seeking immediate medical attention.

10) Specifications

1. Physical Characteristics

Model: WT-001

Watch Body Dimensions: 38.15 mm x 22.5 mm x 11.7 mm

Watch Body Weight: 7.6 g

Watch Strap Length: 85-160 mm (adjustable)

Case Material: ABS Plastic (inner shell), TPE (strap)

Probe Material: Polycarbonate (lens), Stainless Steel (spot probe)

2. Electrical Characteristics

Battery: Li Ion, 50 mAh, rechargeable

Battery Life: Approximately 1 week per charge

Charging Port Rating: 5 V, 2 A

Measurement Location: Wrist

Firmware Version: WT-SW-001

Measurement Frequency: Every 5 minutes

Measurement Range (Temperature): 95°F to 107.6°F (35°C to 42°C)

Accuracy (Temperature): Complies with ASTM E 1112-00 standard requirements

Temperature Scale: Celsius or Fahrenheit

3. Environmental Conditions

Operation Environment Temperature: 60.8°F to 104°F (16°C to 40°C)

Operation Environment Humidity: 15%-95% humidity (non-condensing)

Operation Environment Pressure: 4 psi to 16 psi (74 kPa to 110 kPa)

Storage & Transport Environment Temperature: 14°F to 113°F (-10°C to 45°C)

Storage & Transport Environment Humidity: 15%-95% humidity (non-condensing)

Storage Environment Pressure: 4 psi to 16 psi (74 kPa to 110 kPa)

11) Service Information

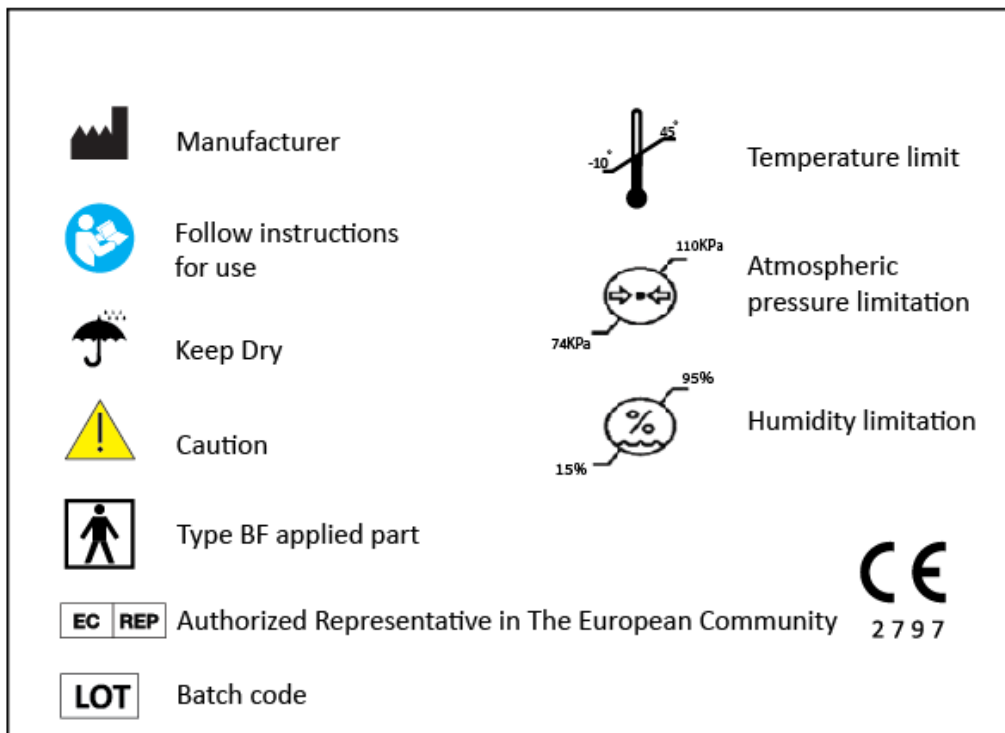
Type: BF Applied Part

Manufacturer: Medisim LTD

Tel: 972-2-5791921

Product of Israel. Packed in China

12) Definition of Symbols



13) FCC Statement:

1. *This device complies with Part 15 of the FCC Rules. Operation is subject to the following two conditions: (1) this device may not cause harmful interference, and (2) this device must accept any interference received, including interference that may cause undesired operation.*

This equipment complies with FCC radiation exposure limits set forth for an uncontrolled environment.

This transmitter must not be co-located or operating in conjunction with any other antenna or transmitter.

2. The FCC wants you to know:

This equipment has been tested and found to comply with the limits for a class B digital device, pursuant to part 15 of the FCC rules. These limits are designed to provide reasonable protection against harmful bf in a residential installation. This equipment generates, uses, and can radiate radio frequency energy and, if not installed and used in accordance with the instructions, may cause harmful interference to radio communications. However, there is no guarantee that

interference will not occur in a particular installation. If this equipment does cause harmful interference to radio or television reception, which can be demonstrated by turning the equipment off and on, the user is encouraged to correct the interference by one or more of the following measures:

- a) Reorient or relocate the receiving antenna.
- b) Increase the separation between the equipment and the receiver.
- c) Connect the equipment to an outlet on a circuit different from that to which the receiver is connected.
- d) Consult the dealer or experienced radio/TV technician.

FCC Warning: Modification not expressly approved by the manufacturer could void the user authority to operate the equipment under FCC rules.

14) Electromagnetic Compatibility (EMC) Tables

Guidance and Manufacturer's Declaration - Electromagnetic Immunity			
Immunity Test	IEC 60601 Test Level	Compliance Level	Electromagnetic Environment - Guidance
Electrostatic discharge (ESD) IEC 61000-4-2	Air Direct: $\pm(2,4,8,15)$ kV; Contact: ± 8 kV	IEC 61000-4-2:2008; Air Direct: $\pm(2,4,8,15)$ kV; Contact: ± 8 kV	Floors should be wood, concrete, or ceramic tile. If floors are covered with synthetic material, the relative humidity should be at least 30%.
Power frequency (50/60 Hz) magnetic field IEC 61000-4-6	30 A/m	3 A/m	The unit should be located at a height between 10 cm and 80 cm above the reference ground.
Radiated RF IEC 61000-4-3	80 MHz to 2.7 GHz; 10 V/m	80 MHz to 2.7 GHz; Professional Healthcare Environment: 3 V/m; Home Healthcare Environment: 10 V/m	<p>Portable and mobile RF communications equipment should be used no closer to any part of the Watch-Temp, including cables, than the recommended separation distance calculated from the equation applicable to the frequency of the transmitter.</p> <p>Recommended separation distance: $d = 1.2 \cdot (P^{1/2})$ @ 80 MHz to 800 MHz $d = 2.3 \cdot (P^{1/2})$ @ 800 MHz to 2.5 GHz where P is the maximum output power rating of the transmitter in watts (W) according to the transmitter manufacturer and d is the recommended separation distance in meters (m).</p> <p>Field strengths from fixed RF transmitters, as determined by an electromagnetic site survey, should be less than the compliance level in each frequency range.</p>