

SMART BT CONTROLLED LIGHT QUICK START GUIDE

POWER



Plug your smart bulb in the socket and power up.

CONNECT

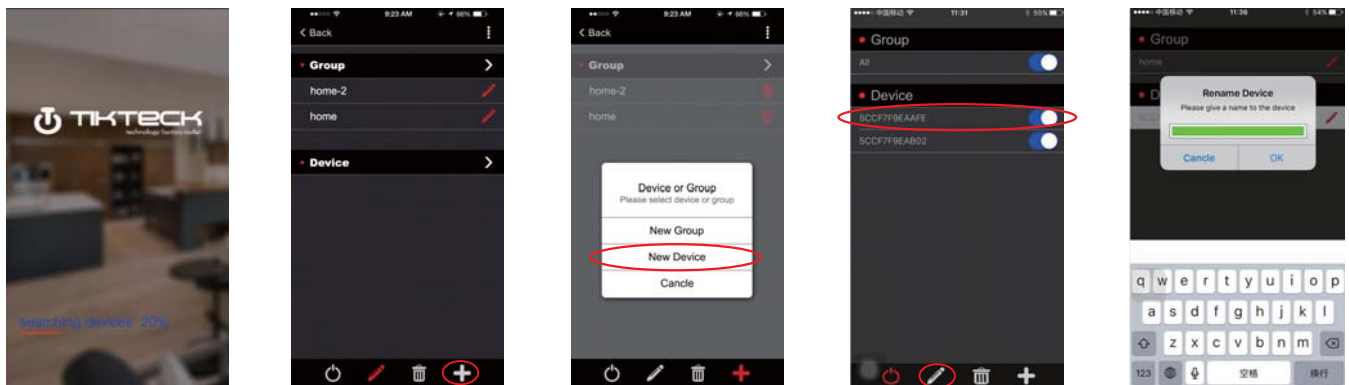


IOS



Android

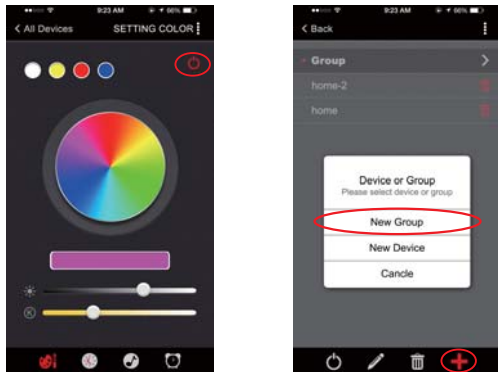
Download "Tiktech Ble Home" from App Store, or "Tiktech Smart Home V1" from Google Play, or scan the QR code to get APP. Turn on the smart phone Bluetooth function, then running the APP. It will scan and connect the devices around automatically, or you can add new devices by clicking on "+" icon and Change the light's name in the app as you like.



CONTROL

Choose any color from the palette to change your light color, and adjust brightness and color temperature below the palette. Tap the on/off icon to turn on/off the light. Tap the four icons on bottom for color mode setting, night mode setting, music setting and timer setting.

GROUP:



Any lights can be grouped for all control.

SPECIFICATION:

Power: 6.6W Socket: E26 Lumen: 600lm Input Voltage: 120Vac
 Operating Temperature: 0°C~40°C (32°F~104°F) Storage Temperature: -20°C~90°C (-4°F ~158°F) Operating Humidity: 10%-90% non-condensing Storage Humidity: 5%-90% non-condensing

Safety Warnings

Plug directly into correct light outlet
 For indoor use only
 DO NOT clean with liquid
 DO NOT use in wet or damp areas
 Keep children away from the smart light
 DO NOT exceed the recommended electrical ratings

Recommendations

Test device locally for safe operation before attempting to control it

Support:

For technical support, advanced features, and usage tips for the Smart light, please send email to: tiktech@USA.com

FCC Statement

This equipment has been tested and found to comply with the limits for a Class B digital device, pursuant to Part 15 of the FCC Rules. These limits are designed to provide reasonable protection against harmful interference in a residential installation. This equipment generates uses and can radiate radio frequency energy and, if not installed and used in accordance with the instructions, may cause harmful interference to radio communications. However, there is no guarantee that interference will not occur in a particular installation. If this equipment does cause harmful interference to radio or television reception, which can be determined by turning the equipment off and on, the user is encouraged to try to correct the interference by one or more of the following measures:

- Reorient or relocate the receiving antenna.
- Increase the separation between the equipment and receiver.
- Connect the equipment into an outlet on a circuit different from that to which the receiver is connected.
- Consult the dealer or an experienced radio/TV technician for help.

This device complies with part 15 of the FCC Rules. Operation is subject to the following two conditions:

(1) This device may not cause harmful interference, and (2) this device must accept any interference received, including interference that may cause undesired operation.

Changes or modifications not expressly approved by the party responsible for compliance could void the user's authority to operate the equipment.