



## ● Specification

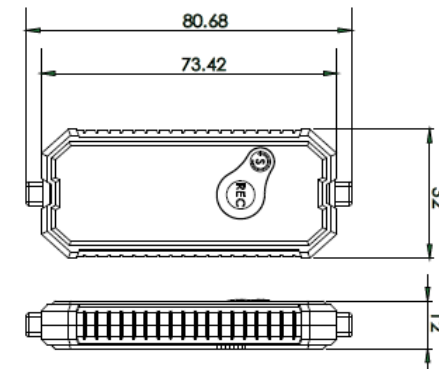
Model	M17-Z012
Chipset	ABC8000, 1GHz MIPS, MCU
Wireless Router	
Standards	IEEE 802.11 b/g/n standards compliant
RF Interface	i-PEX connector x1 & PCB antenna x1
Operating Frequency	2.412 - 2.483GHz(Subject to Local Regulations) USA(FCC): 2.412GHz ~ 2.462GHz Europe(ETSI): 2.412GHz ~ 2.472GHz
Data Rate	802.11b: 1, 2, 5.5, 11Mbps 802.11g: 6, 9, 12, 18, 24, 36, 48, 54Mbps 802.11n: up to 150Mbps
Number of Selectable Channels	802.11n 20MHz/40MHz; 802.11b/g USA(FCC) 11 channels Europe(ETSI) 13 channels
Transmit Power(EIRP)	802.11b: 8.75+/-1.5dBm @1Mbps 802.11g: 8.68+/-1.5dBm @6Mbps 802.11n HT20: 8.72+/-1.5dBm @MCS0 802.11n HT40: 8.63+/-1.5dBm @MCS0

Receiver Sensitivity	11b: $\leq$ -82dBm typical @ 11Mbps 11g: $\leq$ -71dBm typical @ 54Mbps 11n: $\leq$ -67dBm typical @ 20MHz $\leq$ -64dBm typical @ 20MHz
Environmental	
Operating	0~40℃. 10% to 90% Non-Condensing
Storage	-30 ~ 70℃. 10% to 95% Non-Condensing
Operating Voltage	5V/ 1A(5V/350mA-without camera)
Dimension	73.42mm (L) x 32mm (W) x 12mm (H)

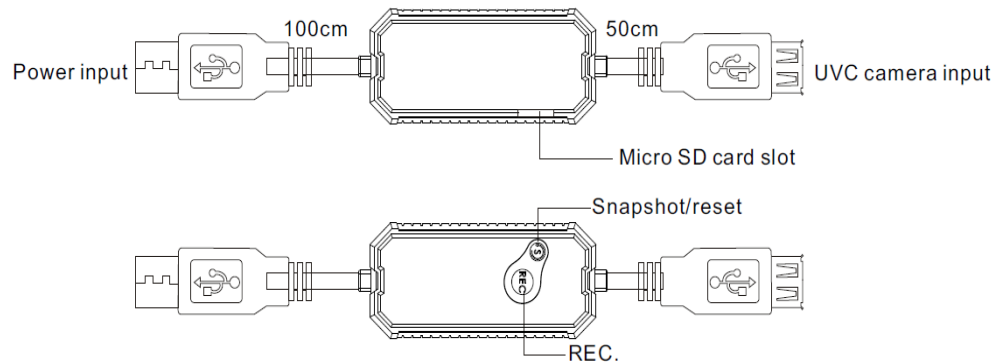
## ● Function

Function	
Support Snapshot, Record function and RTC	
Acceptable Video Format for UVC Camera	MJPEG, H264
Max. Recording Resolution	1080p@25fps
SD Card Capacity	up to 64GB

## ● Dimension(mm)



## ● Overview

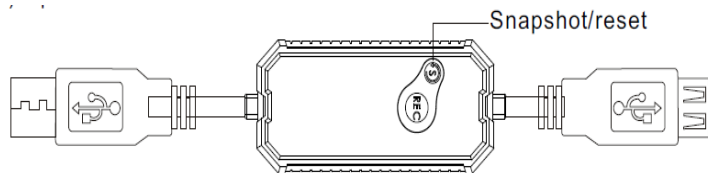


## ● Reset to factory default

1. Press "Snapshot/reset" button and keep 5 seconds to reset DVR.
2. Press "Snapshot/reset" button and keep 10 seconds to reset DVR to factory default.

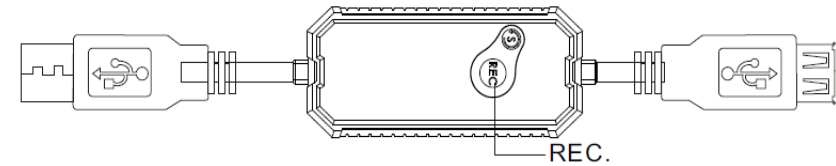
## ● Snapshot

Press "Snapshot/reset" button and keep 1 second to snapshot and image file stores to SD Card. Image file format is JPEG.



## ● Record

1. If the DVR does not record, press "REC" button to start recording.
2. If the DVR is recording, press "REC" button to stop record.



## ● LED Indicator

### Red Indicator

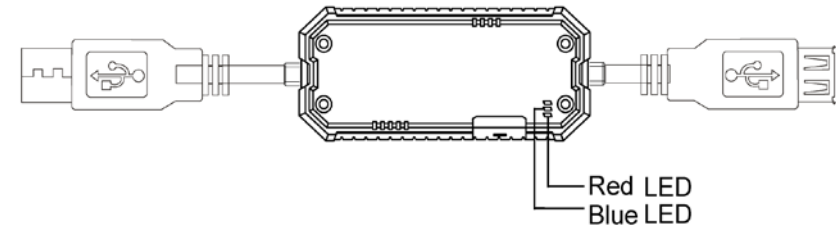
When the DVR connects to power, Red LED will be on.

When remove power from the DVR, Red LED will be off.

### Blue Indicator

When the DVR does not record, Blue LED will be off.

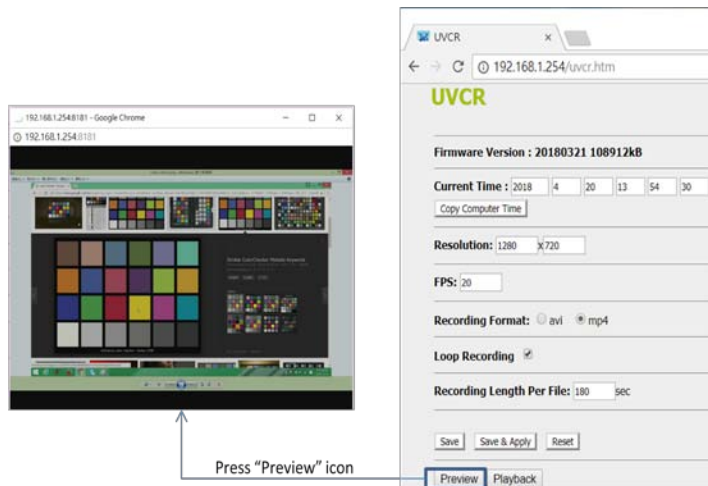
When the DVR is recording, Blue LED will be flashed.



## ● Preview

1. The power input of the DVR connects to power device (ex:5V/2A power adapter) and Red LED will be on.
2. After 30 seconds, Blue LED will be flashed once.
3. The NB or Android phone can search SSID(UVCR-xxxxxxxxxx) and connect with the DVR. Note: Don't any password.

4. Type "http://192.168.1.254/uvcr.htm" on Google Chrome browser.



Item	Description
Current Time	After press "copy computer time" icon, the DVR can get computer time
Resolution	Resolution setting(max): 1920x1080
FPS	Setting camera frame rate
Recording Format	Setting recording file: MJPEG: AVI H.264: mp4
Loop Recording	If micro sd card storage is full, new image file will overwrite older file.
Recording Length Per File	Save image file every 180 sec automatically.
Save & Apply	Save setting to the DVR
Reset	Restore default
Preview	Display video from UVC Camera
Playback	Preview SD Card recording file

## Federal Communication Commission Interference Statement

This device complies with Part 15 of the FCC Rules. Operation is subject to the following two conditions: (1) This device may not cause harmful interference, and (2) this device must accept any interference received, including interference that may cause undesired operation.

This equipment has been tested and found to comply with the limits for a Class B digital device, pursuant to Part 15 of the FCC Rules. These limits are designed to provide reasonable protection against harmful interference in a residential installation. This equipment generates, uses and can radiate radio frequency energy and, if not installed and used in accordance with the instructions, may cause harmful interference to radio communications. However, there is no guarantee that interference will not occur in a particular installation. If this equipment does cause harmful interference to radio or television reception, which can be determined by turning the equipment off and on, the user is encouraged to try to correct the interference by one of the following measures:

- Reorient or relocate the receiving antenna.
- Increase the separation between the equipment and receiver.
- Connect the equipment into an outlet on a circuit different from that to which the receiver is connected.
- Consult the dealer or an experienced radio/TV technician for help.

FCC Caution: Any changes or modifications not expressly approved by the party responsible for compliance could void the user's authority to operate this equipment.

This transmitter must not be co-located or operating in conjunction with any other antenna or transmitter.

**Radiation Exposure Statement:**

The product comply with the FCC portable RF exposure limit set forth for an uncontrolled environment and are safe for intended operation as described in this manual. The further RF exposure reduction can be achieved if the product can be kept as far as possible from the user body or set the device to lower output power if such function is available.

Note: The country code selection is for non-US model only and is not available to all US model. Per FCC regulation, all WiFi product marketed in US must fixed to US operation channels only.