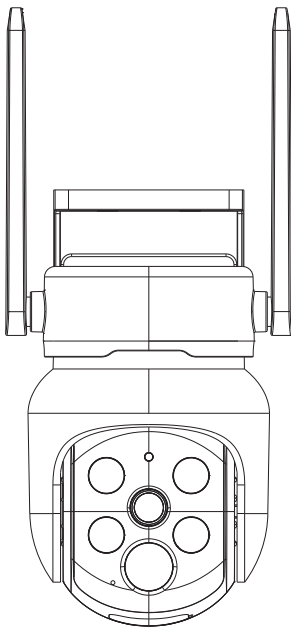


4G Battery Camera

User Manual



※Please read the Quick Guide carefully before using the product and keep it properly.

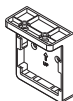
Contents

1. Packing List-----	01
2. Appearance Description-----	02
3. Safety Guidelines-----	03
4. Installation-----	03
5. Applications-----	04
6. Add Device-----	04
7. About SIM card-----	08
8. Power On the Camera-----	08
9. Add Camera to Mobile App-----	09
10. To view on EseeCloud Software on PC-----	12
11. FAQ-----	13

Packing List



1*Camera



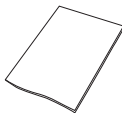
1*Camera Mount



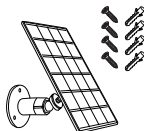
1*USB Cable



1*Screw Package

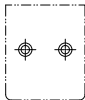


1*User Guide



(Optional)

1*Solar Panel

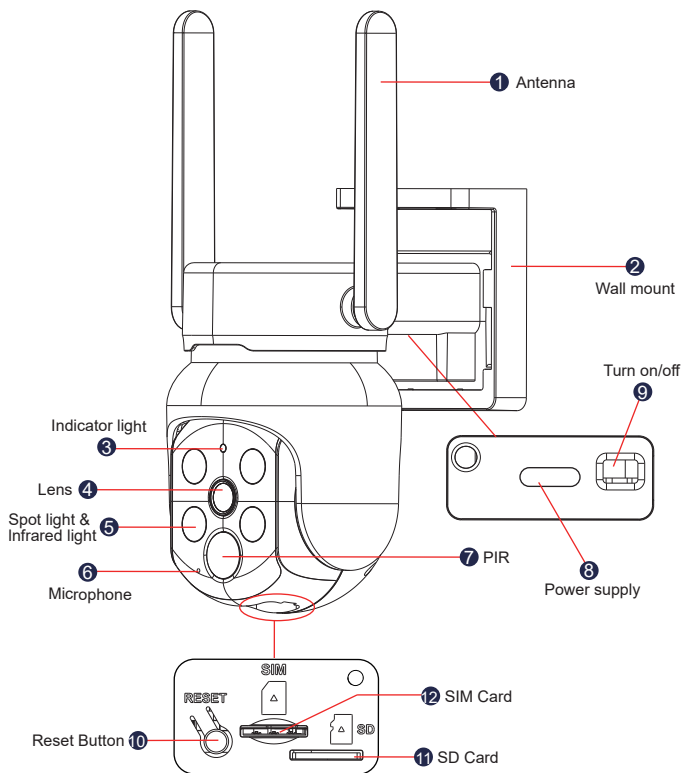


1*Positioning Sticker



1*SIM Card

Appearance Description

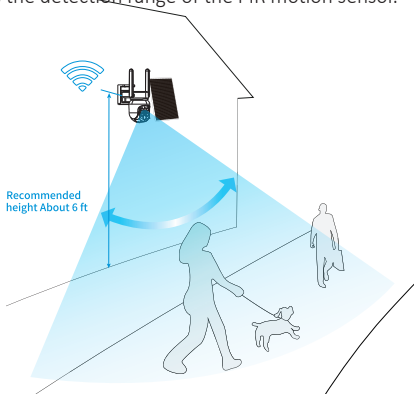


Safety Guidelines

- 1) Please do not put any fluid container on the product.
- 2) Please charge the camera for 2 hours when using the camera for the first time.
- 3) Please use the product in ventilated environment and prevent blocking the vents.
- 4) Please use included power supply with the product to prevent damage to the product.
- 5) Please use the product under its standard working temperature and humidity.

Installation

- In order to ensure that the camera can obtain a good network signal, please install the camera in a location with good signal and no signal interference.
- In order to avoid frequent alarms and rapid battery consumption, do not point the camera directly at the road or in crowded places.
- In order to better connect the 4G network, it is recommended to install the antenna upward or horizontally.
- In order to ensure better waterproof performance, after installation, please ensure that all rubber plugs on the surface of the camera are covered.
- Install the camera 2-3 meters (7-10ft) above the ground. This height maximizes the detection range of the PIR motion sensor.



Applications



Add Device

Software Download

1.1 Download Free App EseeCloud

Search free APP "EseeCloud" in App store or Google play. The phone App will be updated sometimes, if your phone App menu is different from the menu on the user manual, please contact us to get the latest user manual.



EseeCloud App

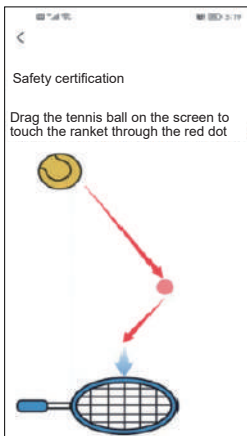
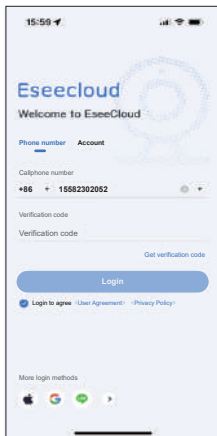


EseeCloud App download

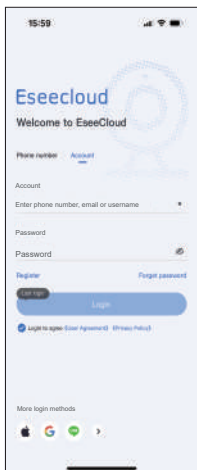
**Note: For IOS system, it requires IOS 9.0 version or above.
For Android, Android 5.0 or above.**

Register Account and log in .

- 1) Go to login interface , click" phone number" .
 - a: Choose the region code and input phone number
 - b: Manually press and hold the tennis ball drag it to the red and then drag it to the tennis racket to go to the next step.
 - c: You' ll receive a verification code input the verification code
 - d: Input the code and register successfully.

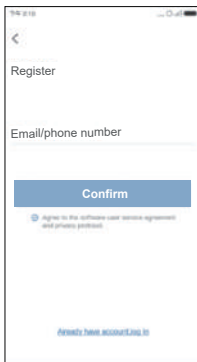


2) Account: Register account with your phone number or email to log in.



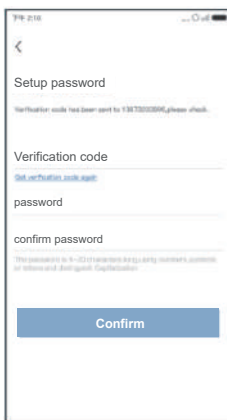
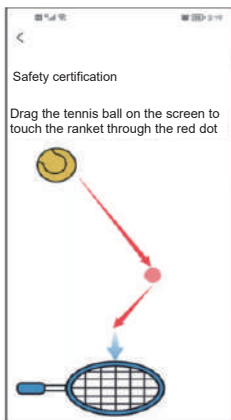
a. Click "Register".

b. Register with your phone number/email, and click "Confirm".

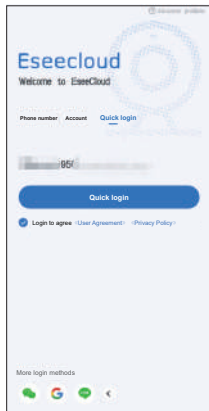


c. Manually press and hold the tennis ball, drag it to the red dot, then drag it to the tennis racket.

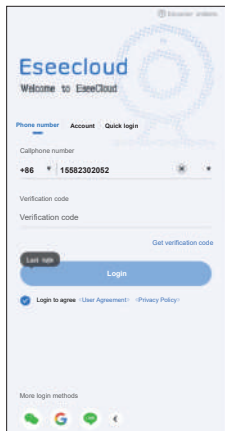
d. Next, you'll receive a verification code. Input the verification code and set up your password. Then click "Confirm" to finish.



3) Quick Login: After your first log in , the APP will automatically recognize your phone number, next time you can choose “quick login”.



4) More login method: you can log in via Wechat, Google or Line account .



About SIM Card

- This camera comes with a built-in 4G SIM card, which is provided by mainstream operators in your country and is a dedicated IoT SIM card that supports this camera.

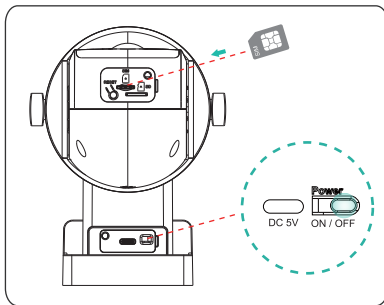
The advantages of this SIM card:

- You don't need to apply for and purchase an additional SIM card (it's not easy to apply for a new SIM card).
- Supports the 4G network of most mainstream operators in your country, with strong network compatibility and smooth 4G signals.
- Purchasing 4G data is convenient and fast, and you can subscribe with just one click within the mobile app.

Note: This SIM card is only compatible with this camera, please do not insert it into a smartphone or other electronic products.

Power On the Camera

1. Insert the SIM card into the card slot.
2. Switch the power button to ON, to ensure that the device is in working status.

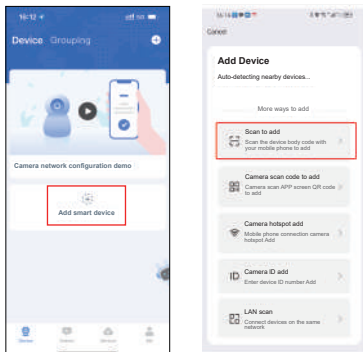


Switch the camera to "ON" to open. Reminder: if the device does not work after turning the switch to ON, please insert the solar panel connection cable and place the solar panel in sunlight for 1-2 hours to charge, or plug in a household charger to charge before trying again.

3. After the device is started, it will announce "connecting Network", please wait to send a dialing voice, after successfully dialing, you will hear the announcing "4G Lte connection succussed", and the indicator light will change from red light to blue light.

Add Camera to Mobile App

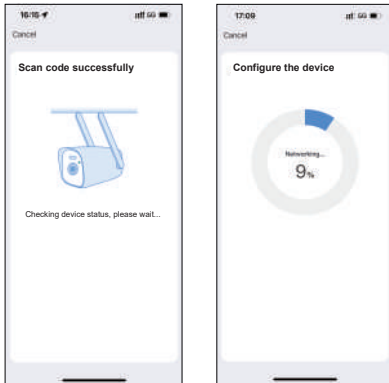
1. On the app's main page, click on the upper right corner of the "+" sign or click on "Add Camera" to enter the automatic search page. Then click "Scan to add" to enter the code scanning page.



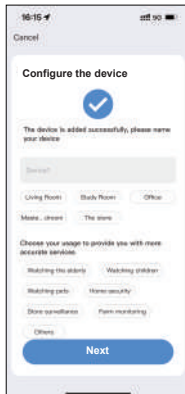
2. Scan the QR code on the body of the device, APP will automatically add the code-scanning device.



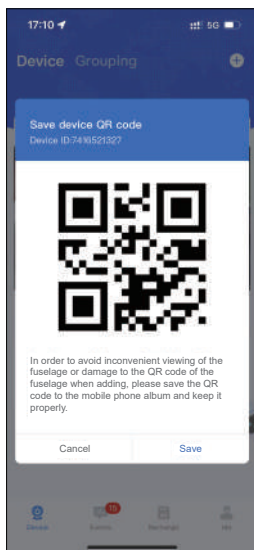
3. Then wait for the camera to configure and connect to the network.



4. Enter the configuration page, and the camera will start connecting to the smartphone. After the connection is completed, the application will redirect to the device "Create" page, then you can edit the camera name and then click "Finish".



5. In order to avoid inconvenient viewing of the fuselage or damage to the QR code of the fuselage when adding, please save the QR code to the mobile phone album and keep it properly.

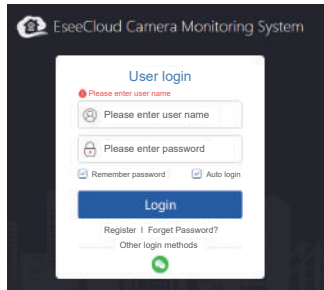


To view on EseeCloud Software on PC

You need to register an account of EseeCloud on your mobile phone and add the device first. So that you can remote view on PC. This is the link of Eseecloud software.

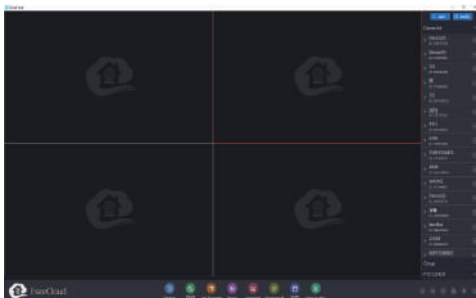
Windows: http://download.dvr163.com/tool/eseeccloud/EseeCloud_Setup_3.0.8.0.exe

MAC: http://download.dvr163.com/tool/EseeCloud-mac-2.0.8_20200228.zip



Please note the user name and password only can be entered by hand, do not paste.

- Input the same account and password of Eseecloud as your mobile terminal, click login.
- After logging in the account and password, the device will automatically synchronize to the computer.



FAQ

Q1. The solar camera stop working?

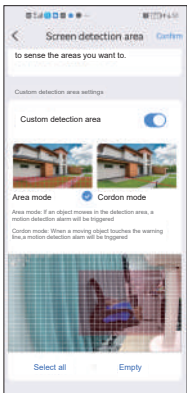
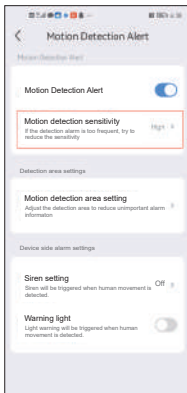
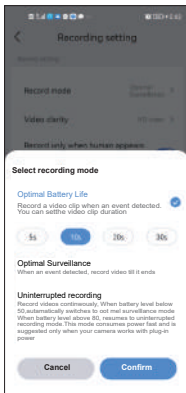
A. 1. Take down the camera to charge it. The blue light flashes and it is charging.

2. After the camera is charged, please delete the device on the app, then press reset button for 6s, add device again.


Q2. The camera consumes too much power?

A. 1. You can select optimal better life mode, select record time.

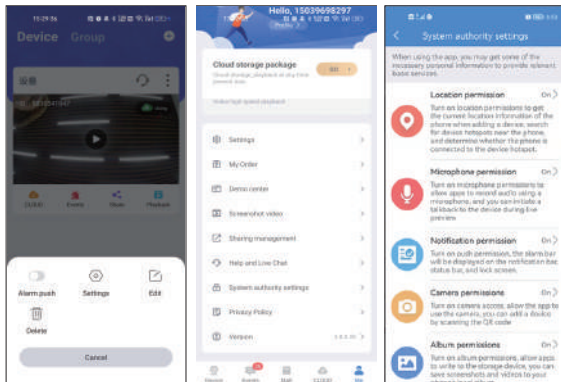
2. Adjust the motion detection sensitivity to low, reduce frequent camera detection and you can customize a detection area.



Q3: I didn't receive the motion detection alarm from my smartphone

A: 1. go to the App -- click  icon on upper right corner -- enable "Alarm push" .

2. if still not receive, go to Me -- System authority settings -- check if all permission is enable.



Q4: There is no recordings when I check playback?

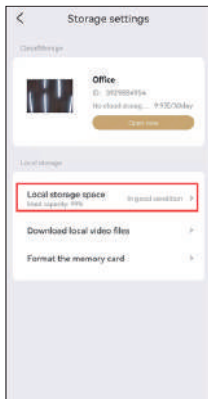
A: SD card storage:

1. Please go to setting interface-Storage settings-Local storage-check the status of the SD card. If there is no SD card. Please take the SD card out and insert it again.

2. If the SD card is in normal condition, for stability, please format the SD card before use.

Cloud storage:


Please go to setting interface-storage management-cloud storage-check the order for cloud storage (Cloud storage service is not free. You need pay for it) If these steps can't work, please contact with Technical Support Team for further assistance.



Q5: Can i add this camera to other EseeCloud security camera system?

A: Yes, this one camera is compatible with other EseeCloud wireless security camera system.

Q6: How can i set it to 24/7 recording?

A: Click  icon, click “settings”, click “Recording setting”, click “Record mode”, click “Uninterrupted recording”. Please note when battery level below 80, it will automatically switch to optimal surveillance mode, so the 24/7 recording of this camera only works with plug-in power.

FCC Statement

This equipment has been tested and found to comply with the limits for a Class B digital device, pursuant to part 15 of the FCC Rules. These limits are designed to provide reasonable protection against harmful interference in a residential installation. This equipment generates, uses and can radiate radio frequency energy and, if not installed and used in accordance with the instructions, may cause harmful interference to radio communications.

However, there is no guarantee that interference will not occur in a particular installation. If this equipment does cause harmful interference to radio or television reception, which can be determined by turning the equipment off and on, the user is encouraged to try to correct the interference by one or more of the following measures:

- Reorient or relocate the receiving antenna.

- Increase the separation between the equipment and receiver.

- Connect the equipment into an outlet on a circuit different from that to which the receiver is connected.

- Consult the dealer or an experienced radio/TV technician for help.

Caution: Any changes or modifications to this device not explicitly approved by manufacturer could void your authority to operate this equipment.

This device complies with part 15 of the FCC Rules. Operation is subject to the following two conditions: (1) This device may not cause harmful interference, and (2) this device must accept any interference received, including interference that may cause undesired operation.

RF Exposure Information

This equipment complies with FCC radiation exposure limits set forth for an uncontrolled environment. This equipment should be installed and operated with minimum distance 20cm between the radiator and your body.