

<div><div><div></div><div>ATEQ</div></div></div> <div>Page 1/7</div>	52205 board Assembly and Test SOP	Type of document	SOP
		Version	1.0
		Editor	Pin Liao
		Created/Updated	24/03/2025

**DISTRIBUTION:** ☐QUA ☒Involved department ☐Remote sites/ATEQ Branches

SCOPE 範圍	APPLICATION FIELD 應用領域	RELATED DOCUMENTS 相關文件
研發部門/ 電子板生產單位	電子板功能測試	

### 歷程表/History List：

日期 Date	版本 Version	內容 Evolution	作者 Redaction	確認 Verification
24/03/2025	1.0	建立檔案 First Version.	Pin Liao	

## ASSEMBLY AND TEST PROCEDURE SOP

**MODEL : 52205 ESP32+2.4G+WIFI 5G PIGGY BOARD**

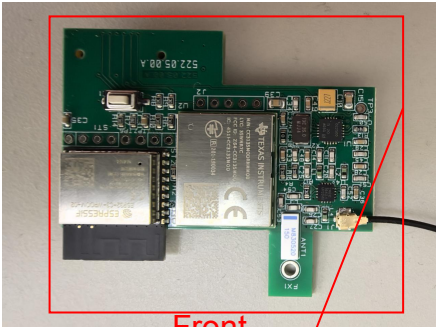
**MODEL VERSION : A0**

**SOP VERSION : 1.0**

**ERP P/N : 52205**

<div><div><div>ATEQ</div></div><div>Page 2/7</div></div>	52205 board Assembly and Test SOP	Type of document	SOP
		Version	1.0
		Editor	Pin Liao
		Created/Updated	24/03/2025

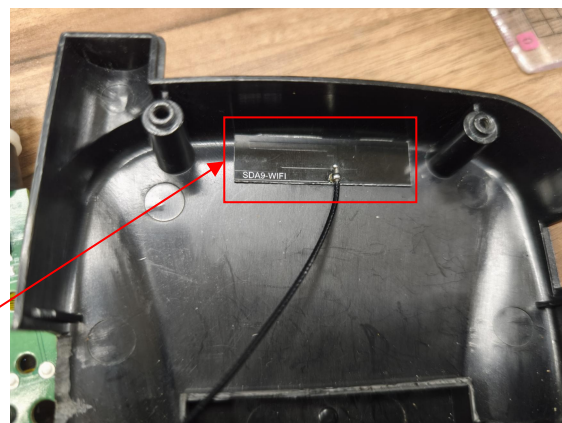
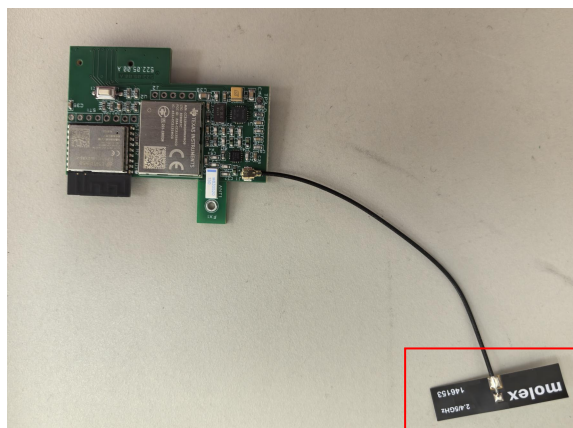
1, ESP32+2.4G+WIFI 5G board and antenna assembly (安裝 ESP32+2.4G+WIFI 5G 板及天線)



Insert the row needles on WiFi Piggy board(52205) into sockets on T56018 board.



<div><div><div></div><div>ATEQ</div></div></div> <div>Page 3/7</div>	52205 board Assembly and Test SOP	Type of document	SOP
		Version	1.0
		Editor	Pin Liao
		Created/Updated	24/03/2025



Remove the adhesive release paper on the back of the 2.4GHz OOK antenna and attach the antenna to the center of the front of the lower cover.

將 2.4GHz OOK 天線背面背膠離形紙撕除並將天線貼附於下蓋前端置中位置

<div><div><div></div><div>ATEQ</div></div></div> <div>Page 4/7</div>	52205 board Assembly and Test SOP	Type of document	SOP
		Version	1.0
		Editor	Pin Liao
		Created/Updated	24/03/2025

## 2, WiFi Test (WiFi 測試)



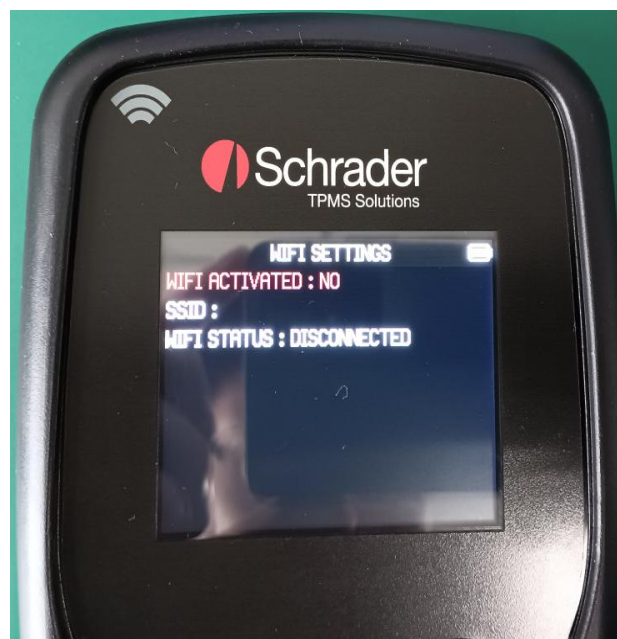
1、Select "MY TOOL"  
選擇"MY TOOL"



2、Select "UPDATE"  
選擇 "UPDATE"

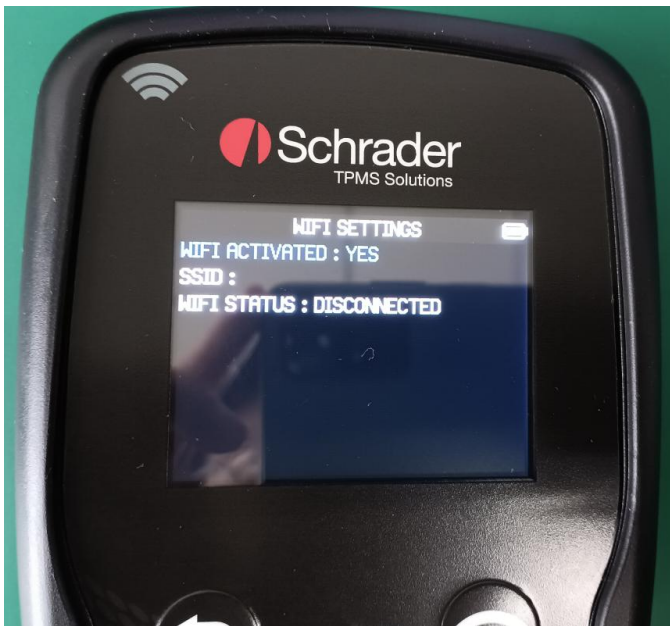


3、Select "WiFi SETTING"  
選擇"WiFi SETTING"

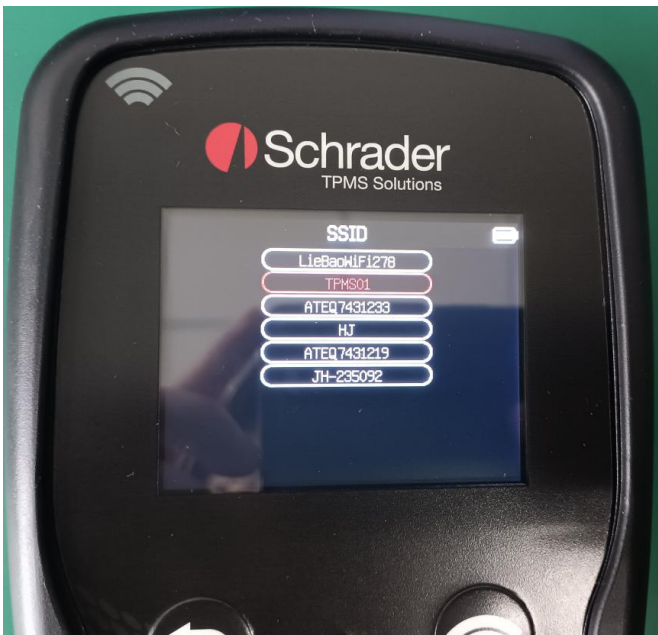


4、Select "WiFi ACTIVATED:NO"  
選擇"WiFi ACTIVATED:NO"





5、Select “WiFi ACTIVATED:YES”  
選擇 “WiFi ACTIVATED:YES”



6、Select “SSID”  
選擇 “SSID”




7、Input Password  
輸入密碼



8、Turn on WiFi  
開啟 WiFi



9 、Turn off WiFi  
關閉 WiFi

	52205 board Assembly and Test SOP	Type of document	SOP
		Version	1.0
		Editor	Pin Liao
		Created/Updated	24/03/2025
Page 7/7			

**FCC Caution:**

This device complies with part 15 of the FCC Rules. Operation is subject to the following two conditions: (1) this device may not cause harmful interference, and (2) this device must accept any interference received, including interference that may cause undesired operation.

Any changes or modifications not expressly approved by the party responsible for compliance could void the user's authority to operate the equipment.

NOTE: This equipment has been tested and found to comply with the limits for a Class B digital device, pursuant to Part 15 of the FCC Rules. These limits are designed to provide reasonable protection against harmful interference in a residential installation. This equipment generates, uses and can radiate radio frequency energy and, if not installed and used in accordance with the instructions, may cause harmful interference to radio communications. However, there is no guarantee that interference will not occur in a particular installation.

If this equipment does cause harmful interference to radio or television reception, which can be determined by turning the equipment off and on, the user is encouraged to try to correct the interference by one or more of the following measures:

- Reorient or relocate the receiving antenna.
- Increase the separation between the equipment and receiver.
- Connect the equipment into an outlet on a circuit different from that to which the receiver is connected.
- Consult the dealer or an experienced radio/TV technician for help.

To maintain compliance with FCC's RF Exposure guidelines, This equipment should be installed and operated with minimum distance between 20cm the radiator your body: Use only the supplied antenna.