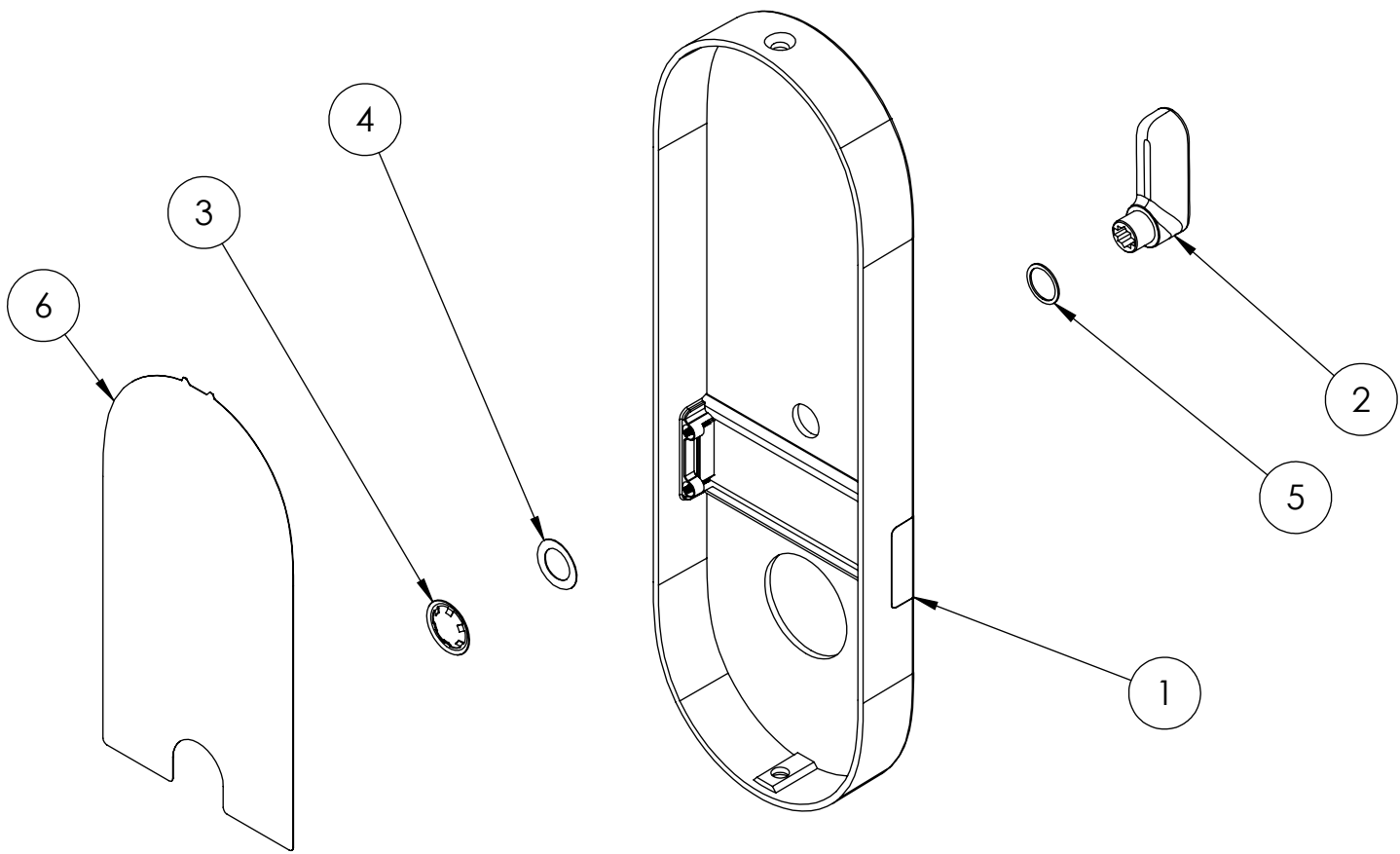
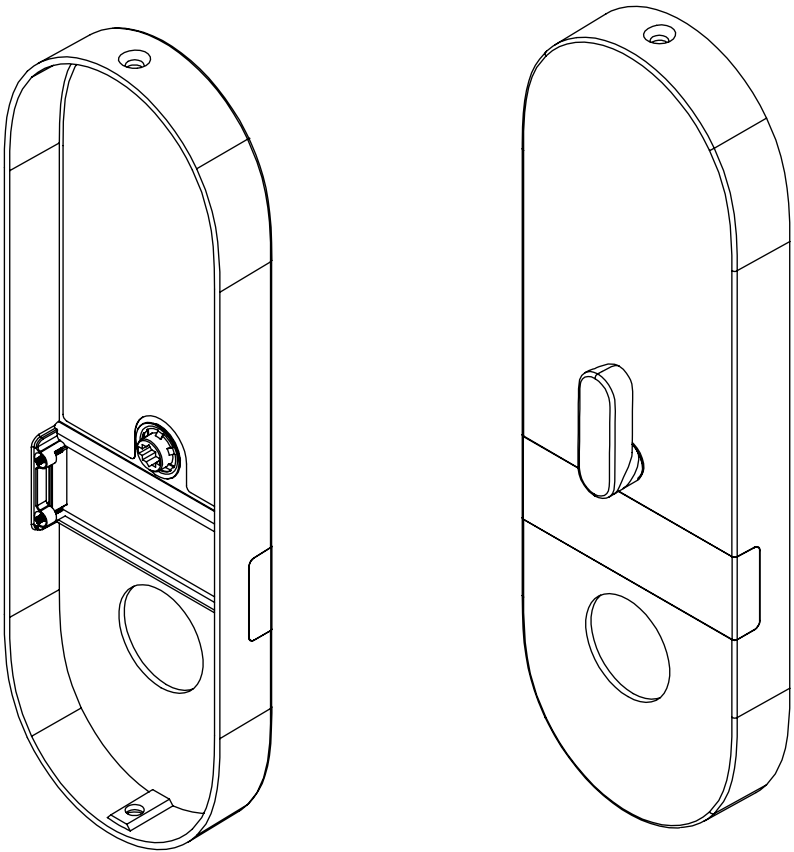


- NOTES (UNLESS OTHERWISE SPECIFIED):
1. ANY ARTWORK SHOWN IS FOR REFERENCE ONLY. FOR FULL ARTWORK DEFINITION, REFER TO FILE: N/A
 2. FOR COMPLETE PART DEFINITION, USE THIS DRAWING IN CONJUNCTION WITH DIGITAL DATA FILE 820-00084_00. ANY DIMENSIONS AND/OR TOLERANCES ON THIS DRAWING SUPERSEDE THE CAD DATABASE.
 3. ☒ INDICATES INCOMING QUALITY CONTROL (IQC) INSPECTION ITEMS. DRAWING CONTAINS 0 IQC ITEMS.
 4. ☒ INDICATES FIRST ARTICLE INSPECTION (FAI) ITEMS. DRAWING CONTAINS 0 FAI ITEMS.



REVISIONS					
ZONE	REV.	DESCRIPTION	DATE	DRAWN	APPROVED
-	00.00	INITIAL RELEASE.	07/06/2018	MFJ	TBS



ITEM NO.	PART NUMBER	DESCRIPTION	QTY.
1	LCT AS45314	M1 INNER COVER WINDOW ASSEMBLY	1
2	LCT 25319	LATCH THUMBTURN	1
3	TX-37	EXTERNAL RETAINING RING	1
4	TS 5806-124	WAVE WASHER	1
5	LCT 25320	THUMBTURN WASHER	1
6	440-00031	M2 INNER ESCUTCHEON LABEL	1

PROPRIETARY AND CONFIDENTIAL
THE INFORMATION CONTAINED IN THIS DRAWING IS THE SOLE PROPERTY OF LATCHABLE, INC. ANY REPRODUCTION IN PART OR AS A WHOLE WITHOUT THE WRITTEN PERMISSION OF LATCHABLE, INC. IS PROHIBITED.

UNLESS OTHERWISE SPECIFIED
DIMENSIONS ARE IN MM
TOLERANCES:
ANGULAR: MACH ± 1° BEND ± 3°
ONE PLACE DECIMAL ± 0.3
TWO PLACE DECIMAL ± 0.13

LATCH

450 W 33RD ST
FLOOR 12
NEW YORK, NY 10001
USA

TITLE:
M2 INNER TRIM SUBASSEMBLY

SIZE
B

DWG. NO.
820-00084

REV
00.00

SCALE: 1:2

DO NOT SCALE DRAWING

SHEET 1 OF 1