



All rights reserved. Brilliant TSCo., Ltd



Brilliant TSBPAY Manual

To ensure the proper use of this product, please read this manual carefully and keep it handy when you need it.

Getting started with BPAY


- Once finish sign in BPAY website, please turn on the card. (<http://hellobpay.com>)
- When you open the package, please check the card and charger battery condition and recharge it.
- When you are processing the initial registration, we recommend that you recharge it more than 3 mins.
- During the BPAY update, please keep the card in the BPAY Charger.
- Please be aware that when updating your BPAY card, it will consume a lot of battery. Please charge the card while updating the product.
- When you register the card with less than 50% battery and in case of power off, it may cancel all the previous registration.



Please download App on App Store or Android App website, and install the App following the introduction.

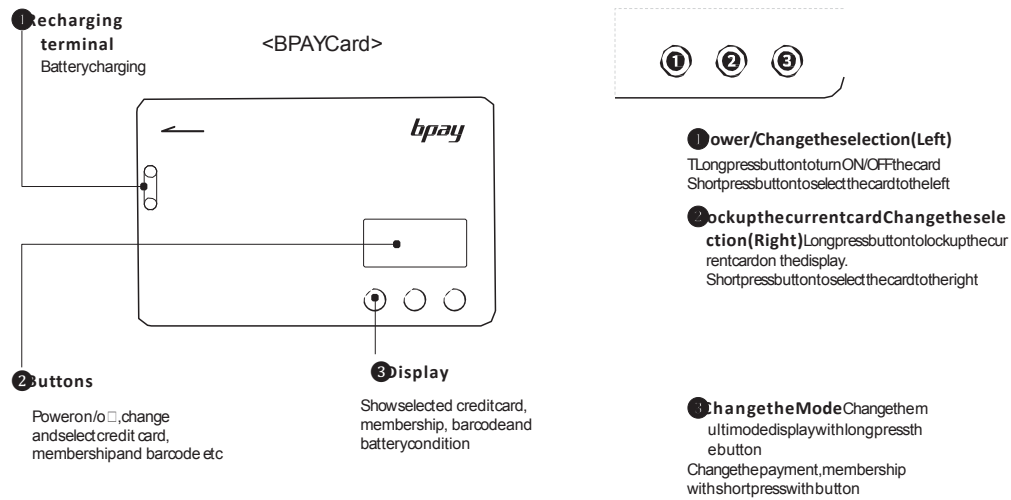
In the IC post terminal that needs to make a payment with IC chip first, please first insert the card into the insertion slot for IC chip and then switch to pay with magnetic.

Safety Caution

- Please do not put heavy things on the product.
- Please do not bend or break the product. Parts inside the product may be damaged.
- Please keep away from ignition sources.
- Please keep away from water, alcohol and Benzene etc. sources.
- Please keep away from humid and dusty condition.
- Please keep away from magnetic product.
- If you disassemble or fix it by yourself, you cannot have any customer services for the product repair.
- If it is necessary to cut the product, it may be dangerous to cut the battery inside the product. Please cut  the battery along the cutting line at the back of the product.
- Please put in the charging cradle when you update firmware, due to the power consumption.
- Please do not use the card in hot and humid places, such as Sauna and Spa.
- Please sign the signature with oil-based pen.
- Due to the nature of the display, the after image may occur temporarily at low temperatures, but there is no effect on product performance.
- BPAY Magnetic Stripe Emulator is a magnetic field generating device that meets international standard ISO7816. It may not be supported in some insert type, outdoor type terminals and some old type terminals depending on the terminal structure and installation environment. (temperature/humidity).
- The product may not be supported in terminals that comply with the JIS X6302 standard and those that collect the magnetic 1 track information of the ISO7816 standard.

Feature and role of BPAY

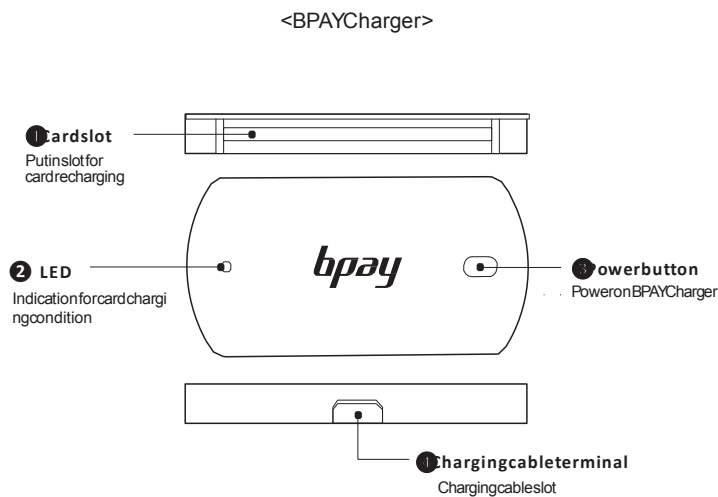
*The design of the real product could be slightly different



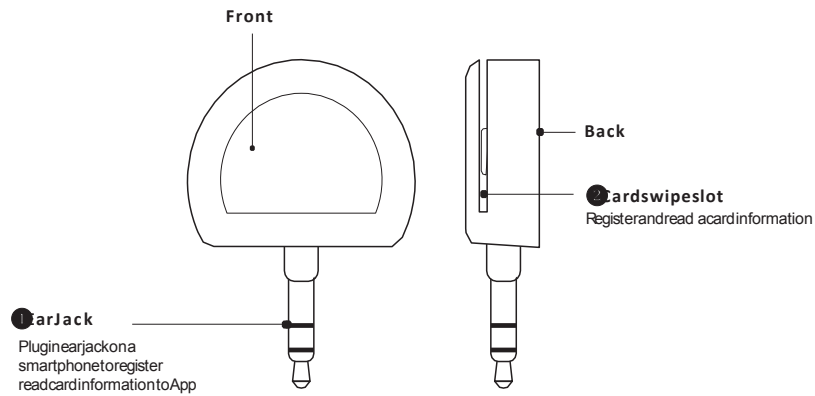
<Please note that the functionality of the control buttons may be changed after you upgrade the software.
For more information about buttons and display, please check our website or app.>

Feature and role of BPAY

*The design of the real product could be slightly different



<BPAY Card Reader>



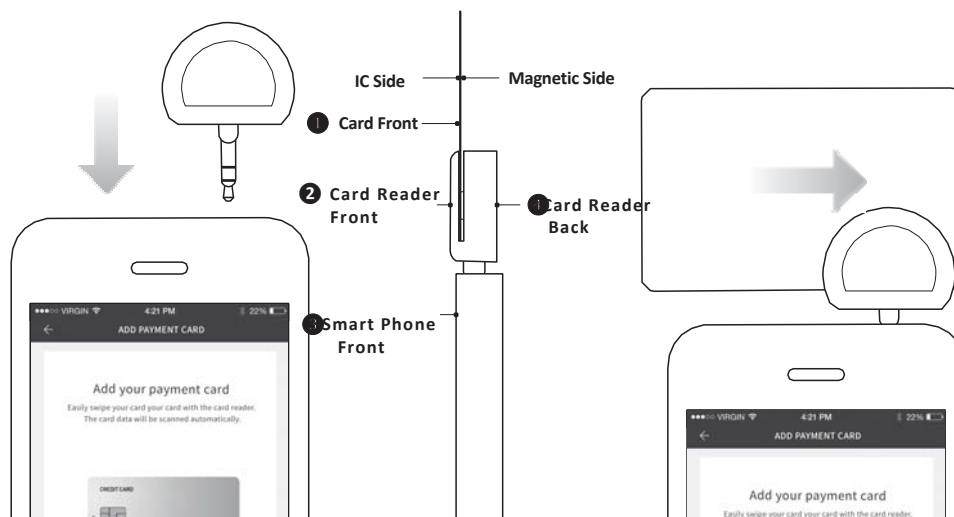
How to read the card

1) Insert card reader

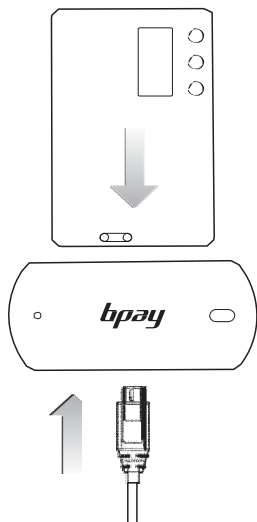
Insert the card reader into the ear jack port and start your app.

2) Read a card

After checking the magnetic direction on the card reader. Follow the introduction of the App, and swipe the card magnetic stripe. In order to use the card reader, please maximize the volume of your smartphone when registering the card.



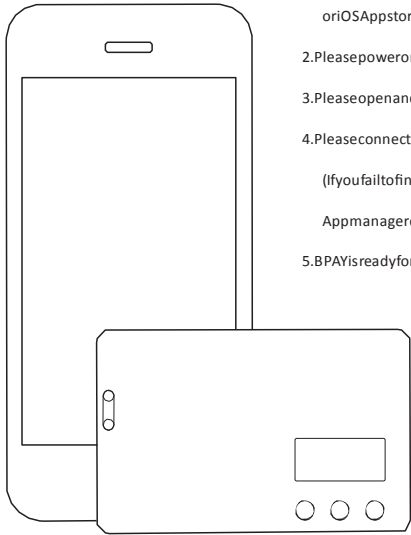
Howtocharge BPAY



- 1) WhenBPAYChargerisconnectedwithrechargingcable
ConnecttheChargerwithrechargingcable,puttheBPAYcardEnd
oftheslot.ALEDlightwillturnonwhenitstartstorecharge.
- 2) RechargingtheextrabatteryontheBPAYCharger
Withoutaconnectionwithpowercableitcanberechargingwith
extrabattery.InsideoftheBPAYCharger.PutBPAYcardintheslotan
dturndthepoweron,itwillstartrechargingwithturningLEDlighton.
- 3) LEDdisplayshowingbatterylevel

LED	Condition
Red	Charging
Green	Full charge
Orange	Error

ConnectwithBPAYApp



- 1.PleasedownloadBPAYManagerAppfromGooglePlayStore
oriOSAppstoreandinstallonyourphone.
- 2.PleasepoweronBPAYtoconnectwithadevice
- 3.PleaseopenandstartBPAYAppmanageronyoursmartphone.
- 4.PleaseconnectBPAYwithyourSmartphone.

(IfyoufailtofindconnectionBpaywithAppovertreetime,
AppmanagerdisplayrestartingmessageforBPAY.)
- 5.BPAYisreadyforuse,now!

YoucanfindmoreinformationwhenyoustarttheAppatthefirsttime.Pleas
echeckandfollowdetailexplanationforregistering.

Warranty

- With 90 days limited warranty, Brilliant TS guarantees the product is no defect for its design, material and tech solutions.
- If you need a warranty, please contact sales store or call center as below.

Safety information

- This is electromagnetic compatibility product. It is home electronics and it can use anywhere in the world.
- This wireless equipment is possible to have electric wave interference during the operation so it should not use for life safety related service.

Item standard and specification

Card battery	3.8V / 13mAh , Lithium-Polymer, Rechargeable
Standby time	The usage time of the card may vary depending on the safety mode you choose (refer to the app or homepage)
Charging time	About 1 and half hour
Cradle rated voltage/current	Input DC 5.0V / Output DC 4.35V / 13mA
Operating temperature	-10°C ~ 50°C
Size/weight	card size : 85.5mm x 54mm x 0.8mm / 6g Charger size : 73 mm x 35mm x 0.75mm / 16g Reader size : 47mm x 30mm x 11mm / 7g Charger cable : 17g
Display	1.1 inch E-paper display

- Corporate Name: Brilliant TS Co., Ltd.
- Item title (Model Name-Device): low power radio equipment and associated ancillary equipment for wireless data communications systems, BPAY-CMG-01
- Item title (Model Name-Device): Card charging cradle, BPAY-BTC-01
- Manufacturing date: refer to product marking
- Manufacturer/Country of Origin: Brilliant TS Co., Ltd./Korea

Other instructions

- Recharging battery can be lasting longer with proper maintenance.
If you don't use the item for long time, it may decrease the battery lifespan.
- Please keep away from over 35°C or under -5°C environment.
- If you want to maximize battery capacity, please use it in room temperature.
If you use the product in low temperature, the battery life may decrease.
- To satisfy FCC RF exposure requirements for mobile and base station transmission devices, a separation distance of 20 cm or more should be maintained between the antenna of this device and persons during operation. To ensure compliance, operation at closer than this distance is not recommended. The antenna(s) used for this transmitter must not be co-located or operating in conjunction with any other antenna or transmitter.

FCC Certification Requirements

- This device complies with Part 15 of the FCC Rules. Operation is subject to the following two conditions: (1) this device may not cause harmful interference, and (2) this device must accept any interference received, including interference that may cause undesired operation.
Note:
This equipment has been tested and found to comply with the limits for a class B digital device, pursuant to Part 15 of the FCC Rules. These limits are designed to provide reasonable protection against harmful interference in a residential installation. This equipment generates, uses and can radiate radio frequency energy and if not installed and used in accordance with the instructions, may cause harmful interference to radio communications. However, there is no guarantee that interference will not occur in a particular installation. If this equipment does cause harmful interference to radio or television reception, which can be determined by turning the equipment off and on, the user is encouraged to try to correct the interference by one or more of the following measures:
-Reorient or relocate the receiving antenna
-Increase the separation between the equipment and receiver
-Connect the equipment into an outlet on a circuit different from that to which the receiver is connected
-Consult the dealer or an experienced radio/TV technician for help.
CAUTION:
Changes or modifications not expressly approved by the party responsible for compliance could void the user's authority to operate the equipment.

BPAYServicecenter

- Servicecenter e-mail
- BPAY website

account@brilliant.com
<http://hell.obpay.com>

You can find more information on the website



10F, U-SPACE 2-A-dong, 570 Gaecheon-ro, Bundang-gu, Seongnam-city, Gyeonggi-do, 13464, KOREA