

For warranty and support, please visit www.mypinn.com or email us at info@mypinn.com

The Bluetooth word mark and logos are owned by Bluetooth SIG, Inc.
All other trademarks and trade names are those of their respective owners.



**The World's First Wearable Bluetooth Clip Combining
a Wireless Earbud, Speaker & Display**

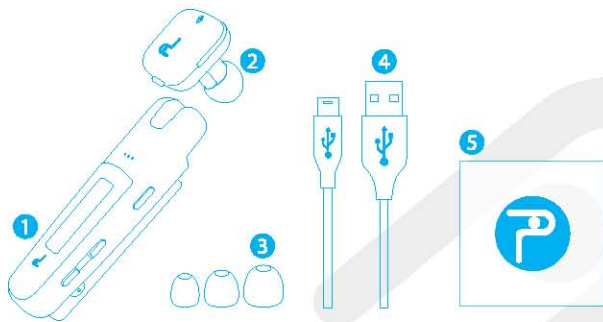


© 2017 Pinn™ ALL RIGHTS RESERVED.

www.mypinn.com

PACKAGE INCLUDES

1. Pinn Bluetooth Clip
2. Pinn Bluetooth Earbud
3. Ear Tips (3 different Sizes)
4. USB Charging Cable
5. Quick Guide



PINN EARBUD



* Make sure to wear your earbud microphone pointing toward your mouth for better communication experience.





POWER

When earbud is docked:

- Press and hold the power button to turn on/off the Pinn Clip & the Pinn Earbud.

When earbud is separated:

- Press and hold the earbud button to turn on/off the Pinn Earbud.
- Press and hold the power button to turn on/off the Pinn Clip.

CHARGING

Pinn Clip is charged by connecting a Micro-USB cable to the Micro USB port on the Pinn Clip.

Pinn Earbud can be charged by docking the earbud to the Pinn Clip.

PINN MOBILE APP

Download the Pinn Mobile App by searching “Pinn” from App Store or Play Store.

Through the Pinn App, you can control your Pinn’s setting and update Pinn’s firmware.



PAIRING

iOS

1. Download the Pinn App from the App Store.
2. Make sure the Pinn Earbud is docked to the Pinn Clip.
3. Power on the Pinn Clip by pressing & holding the power button (Once you power on the Pinn Clip, both Pinn Clip and Pinn Earbud will be entered into a pairing mode).
4. Sync the Pinn Earbud first by entering the Bluetooth settings menu on your mobile device and select Pinn Earbud.
5. Initiate and follow the instructions on the Pinn App to complete Bluetooth syncing process.

Android

1. Download the Pinn App from the Play Store.
2. Make sure the Pinn Earbud is docked to the Pinn Clip.
3. Power on the Pinn Clip by pressing & holding the power button (Once you power on the Pinn Clip, both Pinn Clip and Pinn Earbud will be entered into a pairing mode).
4. Initiate and follow the instructions on the Pinn App to complete Bluetooth syncing process.

ANSWERING/ENDING CALLS

Answering calls

- When the earbud is docked to the clip:
 - Undock the earbud to answer the call using an earbud.
 - Press select button to answer the call using a speakerphone.
- When the earbud is undocked:
 - Press the earbud button to answer the call.

Ending calls

- When using speakerphone:
 - Press the select button to end the call.
- When using the earbud:
 - Press the earbud button to end the call.

* To transition from speaker phone to earbud, simply undock the earbud from the clip to talk on the earbud and dock the earbud to the clip to talk on a speakerphone.

MISSED CALLS AND UNREAD MESSAGES

To check the most recent activities (missed call or unread message) you could simply press the select button to check.

Checking missed calls

- Double click the power button to access the main menu.
- Select the missed call [☎] icon.

Checking unread messages

- Double click the power button to access the main menu.
- Select the text message [✉] icon.

MUSIC CONTROL

Double click the power button to access the main menu and select the music [🎵] icon.

Playback control

- Press select button to play/pause your music.

Track change

- Press & hold the up/down button to change to next/previous track.

Volume control

- Press the up/down button to adjust the volume.

* Undock your earbud to listen to your music with earbud, dock earbud to listen to music with Pinn speaker

ROTATING THE SCREEN

- Double click the power button to access the main menu and select the gear [⚙️] icon.

- Select the rotating [🔄] icon to rotate the the screen by 180 degrees.

SELFIE CLICKER

Double click the power button to access the main menu.
Select the camera [📷] icon to enter the selfie clicker mode.

iOS

1. Turn on the iPhone camera and click the select button to take the photo.

Android

1. Once you select the camera [📷] icon from the main menu of the Pinn, your mobile device will automatically access the camera.
 2. Press the select button to take the photo.
- * Your mobile device must be unlocked in order for Pinn to access the camera automatically.

VOICE COMMAND ACTIVATION

Press and hold the select button to activate Siri/Google Now.
To exit the Voice Command mode, double click the power button.

SAFETY INFORMATION

Use Responsibly

Do not use headset when it's unsafe to do so: while operating a vehicle, crossing the street, or during any activity or in an environment where your full attention to your surrounding is required. It's dangerous to drive while wearing the headset and in many places it's illegal because it decreases your chance of hearing life-saving sounds outside of your vehicle, such as another car's horn and emergency vehicle sirens. Please avoid wearing our earbud while driving.

Listen Responsibly

To avoid hearing damage, make sure that the volume on your music player is turned down before connecting your headset. After placing the earbud in your ear, gradually turn up the volume until you reach a comfortable listening level. Noise levels are measured in decibels (dB); exposure to any noise at or above 85 dB can cause gradual hearing loss. Monitor your use; hearing loss is function of loudness versus time. The louder it is, the less time you can be exposed to it. The softer it is, the more time you can listen to it. To prevent possible hearing damage, do not listen at high volume levels for long periods.

WARRANTY

This Pinn product is warranted to be free from defects in materials or workmanship for one year from the date of purchase. Within this period, Pinn will, at its sole option, repair or replace any components that fail in normal use. Such repairs or replacement will be made at no charge to the customer for parts or labor, provided that the customer shall be responsible for any transportation cost. This warranty does not apply to: (i) cosmetic damage, such as scratches, nicks and dents; (ii) consumable parts, such as batteries, unless product damage has occurred due to a defect in materials or workmanship; (iii) damage caused by accident, abuse, misuse, water, flood, fire, or other acts of nature or external causes; (iv) damage caused by service performed by anyone who is not an authorized service provider of Pinn; or (v) damage to a product that has been modified or altered without the written permission of Pinn, or (vi) damage to a product that has been connected to power and/or data cables that are not supplied by Pinn. In addition, Pinn reserves the right to refuse warranty claims against products or services that are obtained and/or used in contravention of the laws of any country.

Repairs have a 90 day warranty. If the unit sent in is still under its original warranty, then the new warranty is 90 days or to the end of the original 1 year warranty, depending upon which is longer.

THE WARRANTIES AND REMEDIES CONTAINED HEREIN ARE EXCLUSIVE AND IN LIEU OF ALL OTHER WARRANTIES EXPRESS, IMPLIED, OR STATUTORY, INCLUDING ANY LIABILITY ARISING UNDER ANY WARRANTY OF MERCHANTABILITY OR FITNESS FOR A PARTICULAR PURPOSE, STATUTORY OR OTHERWISE. THIS WARRANTY GIVES YOU SPECIFIC LEGAL RIGHTS, WHICH MAY VARY FROM STATE TO STATE.

IN NO EVENT SHALL Pinn BE LIABLE FOR ANY INCIDENTAL, SPECIAL, INDIRECT, OR CONSEQUENTIAL DAMAGES, WHETHER RESULTING FROM THE USE, MISUSE, OR INABILITY TO USE THIS PRODUCT OR FROM DEFECTS IN THE PRODUCT. SOME STATES DO NOT ALLOW THE EXCLUSION OF INCIDENTAL OR CONSEQUENTIAL DAMAGES, SO THE ABOVE LIMITATIONS MAY NOT APPLY TO YOU.

Pinn retains the exclusive right to repair or replace (with a new or newly-overhauled replacement product) the device or software or offer a full refund of the purchase price at its sole discretion. SUCH REMEDY SHALL BE YOUR SOLE AND EXCLUSIVE REMEDY FOR ANY BREACH OF WARRANTY.

To obtain warranty service, contact your local Pinn authorized dealer or call Pinn Product Support for shipping instructions and an RMA tracking number. Securely pack the device and a copy of the original sales receipt, which is required as the proof of purchase for warranty repairs. Write the tracking number clearly on the outside of the package. Send the device, freight charges prepaid, to any Pinn warranty service station.

Online Auction Purchases: Products purchased through online auctions are not eligible for rebates or other special offers from Pinn warranty coverage. Online auction confirmations are not accepted for warranty verification. To obtain warranty service, an original or copy of the sales receipt from the original retailer is required. Pinn will not replace missing components from any package purchased through an online auction.

International Purchases: A separate warranty may be provided by International distributors for devices purchased outside the United States depending on the country. If applicable, this warranty is provided by the local in-country distributor and this distributor provides local service for your device. Distributor warranties are only valid in the area of intended distribution. Devices purchased in the United States or Canada must be returned to the Pinn service center in the United Kingdom, the United States, Canada, or Taiwan for service.

SPECIFICATIONS

• MICROPHONE

Directional Characteristic: Omni-directional
Frequency Range: 100Hz ~ KHz
Output Impedance: 450Ω @ 1kHz

• AUDIO SPECS

Impedance: 16 Ω at 1KHz
Frequency Range: 20-20,000 Hz
Output Sound: 105 dB SPL ± 2dB
Speaker Max Volume: +14 db
Earbud Max Volume: -9 db
Speaker Impedance (DC): Receiver : 16Ohm
Loud Speaker: 8Ohm(700mW)
Bandwidth: 20 hz~20khz
APT-X: High-quality Bluetooth sound
audio codec (CD quality)
CVC: Clear voice capture and noise reduction

• COMPATIBLE WITH

iOS 7.0 or above with Bluetooth 4.0 or later
Android 5.0.0 or above with Bluetooth 4.0 or later

• MATERIAL

Earbuds: PC Plastic
Ear-tips: Silicone
Unit: Aluminum, PC Plastic, Urethane, Silicone

• EARBUD

Dimensions: 22.5mm x 21.8 x 27.4mm
(0.88" x 0.85" x 1.08")

Weight: 4.59 g

Battery: 25 mAh Rechargeable Li-Ion Polymer
Charging Time: 120 minutes
Wireless: BT Classic 2.1
Wireless Range: 30 feet/ 10 meters

• CLIP

Dimensions: 21.69mm x 71.59mm x 15.47mm
(0.85"x2.81"x0.6")

Weight: 20.5g

Battery: 80 mAh Rechargeable Li-Ion Polymer
Charging Time: 140 minutes
Wireless: BLE 4.1
Charged Capsule Support: Clip docking charges
Charging Type: Standard Micro USB Connection

STATEMENT

Caution Statement

Any changes or modifications not expressly approved by the party responsible for compliance could void the user's authority to operate this equipment.

WARNING: Do not expose this product to liquid or excessive heat.

Disposal Information



The symbol indicates that this product and/or battery should not be disposed of with household waste. When you decide to dispose of this product and/or its battery, do so in accordance with local environmental laws and guidelines.

FCC Compliance Information

THIS DEVICE COMPLIES WITH PART 15 OF THE FCC RULES.

Operation is subject to the following two conditions:

- (1) This device may not cause harmful interference and
- (2) This device must accept any interference received, including interference that may cause undesired operation.

Note: This equipment has been tested and found to comply with the limits for a Class B digital device pursuant to part 15 of the FCC Rules. These limits are designed to provide reasonable protection against harmful interference in a residential installation. This equipment generates, uses, and can radiate radio frequency energy and, if not installed and used in accordance with the instructions, may cause harmful interference to radio communications. However, there is no guarantee that interference will not occur in a particular installation. If this equipment does cause harmful interference to radio or television reception, which can be determined by turning the equipment and on, the user is encouraged to try to correct the interference by one or more of the following measures:

- Reorient or relocate the receiving antenna.
- Increase the separation between the equipment and receiver.
- Connect the equipment into an outlet on a circuit different from that to which the receiver is connected.
- Consult the dealer or an experienced radio/TV technician for help.

FCCID : 2AK32PINN01CLIP / FCCID : 2AK32PINNEARBUD / Frequency Band : 2 402 MHz ~ 2 480 MHz

Modifications not expressly approved by the manufacturer could void the user's authority to operate the equipment under FCC rules.

FAQ

Please visit www.mypinn.com