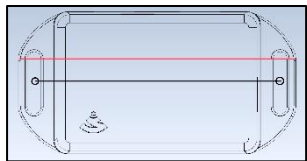


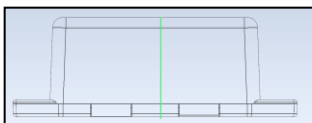
Dimensions and Template:



2.703 in. Length
2.396 in. between flange
center-holes

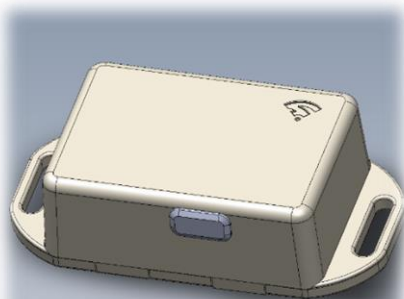


1.378 in. Width



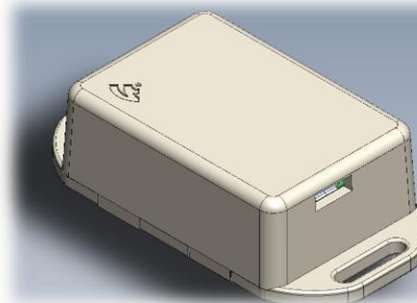
0.76 in. Depth

Quick-Start Guide



Zedly Trakkit

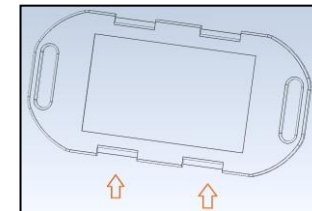
Meet your Trakkit



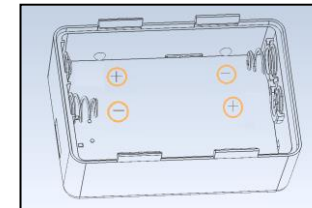
The most versatile device in the Zedly lineup, Trakkit provides an innovative solution for your tracking needs that includes GPS tracking, active alerts, motion detection and temperature monitoring. A micro USB port is provided to run off external power (this does not charge the battery).

Battery Installation & Removal

When you first unbox your Trakkit, batteries must be installed. To access the battery compartment in your Trakkit, remove the bottom plate by gently pinching the side barbs, one side at a time.



Once open, carefully insert AAA batteries one at a time, paying close attention to the positive and negative contact ends. Replace bottom cover in a way such that the grooves cover the batteries.



USE OF DISPOSABLE LITHIUM AAA BATTERIES IS PREFERRED

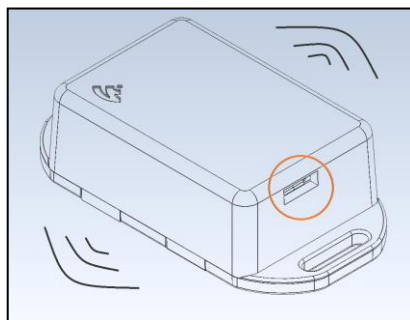
Engage with your Trakkit:

Throughout the installation process, Trakkit requires the use of its mobile phone app available on the App store and Google Play. Through this app, you will receive tracking alerts and notifications regarding firmware updates, activate your account, register devices and manage your service subscription.



Connect to your Trakkit:

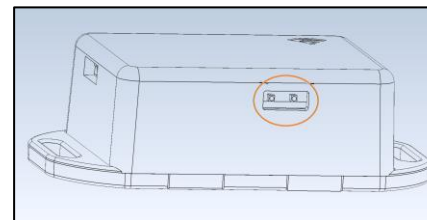
After installing batteries in your Trakkit, plug in the provided USB cable in the area shown to connect to the device and configure it to access your Home Wi-Fi network.



Detailed instructions on how to configure your device and troubleshooting help can be found at: <http://trakkit.zedly.com>

Configure your Trakkit:

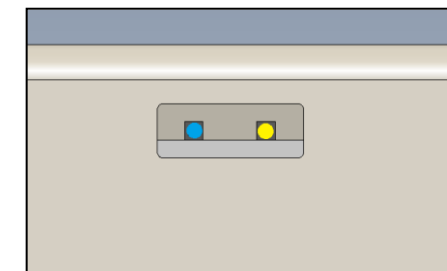
When the Trakkit powers on, look for a solid yellow light emitting from the LED window (shown below).



Next, gently double tap the device until a blue light appears, then double tap again. The blue light will begin flashing, indicating the device is in "access point mode" and is ready to pair with your mobile phone using the Trakkit App. The user should notice a solid blue light and flashing yellow light to indicate the device is in "access point mode". Use the mobile app to finalize the activation of your device.

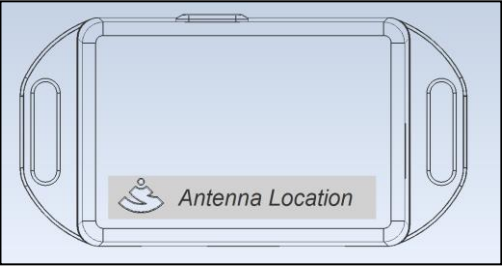
Firmware updates:

When new firmware is released, users will be prompted to connect the device via USB cable to a power source and authorize the update. This update must be performed within range of one of the home networks. Once the update is under way, both the blue and yellow LEDs will blink rapidly until the update has completed.



Mounting your Trakkit:

Your Trakkit is equipped with flanges on both sides of the device for convenient mounting wherever you need it. When mounting the device, please note the antenna is located on the top logo side of the device.



Note: Different orientations and locations may affect performance

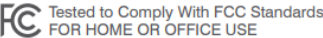
your personal non-commercial use. You may not use any content or services in a manner that has not been authorised by the content owner or service provider. Without limiting the foregoing, unless expressly authorised by the applicable content owner or service provider, you may not modify, copy, republish, upload, post, transmit, translate, sell, create derivative works, exploit, or distribute in any manner or medium any content or services displayed through this device.

Certifications

Hereby, Zedly Inc. declares that this product is in compliance with the essential requirements and other relevant provisions of Directive 1999/5/EC. The original Declaration of Conformity may be found at zedly.com/compliance.
Certified under FCC Part 15.
Certified in Canada by IC to RSS-247.
This Class B digital apparatus complies with Canadian ICES-003.
Cet appareil numérique de la classe B est conforme à la norme NMB-003 du Canada.
This device should not be installed or operated within 20cm (8 inches) of persons or other radio emitting devices.
Multipurpose Sensor FCC ID : , IC :

FCC Statement

Operation of this device is subject to the following two conditions: (1) this device may not cause interference, and (2) this device must accept any interference, including interference that may cause undesired operation of the device.



Safety Instructions

<ul style="list-style-type: none">• Read, keep and follow these instructions• Heed all warnings• Do not use this product near water or expose the product to dripping or splashing of any water or liquid.• Clean only with a dry cloth• Do not install near any heat sources such as radiators, heat	<p>registers, stoves or other apparatus (including amplifiers) that produce heat</p> <ul style="list-style-type: none">• Only use attachments and accessories specified by the manufacturer• Read our Product Usage Guidelines at: http://www.zedly.com/guidelines
---	---

CAUTION: RISK OF EXPLOSION IF BATTERY IS REPLACED BY AN INCORRECT TYPE. DISPOSE OF USED BATTERIES ACCORDING TO THE INSTRUCTIONS. VORSICHT. EXPLOSIONSGEFAHR WENN BATTERIEN EINES FALSCHEN TYPUS VERWENDET WERDEN. ENTSORGEN SIE BATTERIEN ENTSPRECHEND DER ANWEISUNGEN. ATTENTION. RISQUE D'EXPLOSION SI LA BATTERIE EST REMPLACÉE PAR UN MODÈLE INCORRECT. JETEZ LES BATTERIES USAGÉES SELON LES INSTRUCTIONS S'Y RÉFÉRANT.

WARNING: No user-serviceable parts inside. Refer all servicing to qualified service personnel.



Canada Statement

This device complies with Industry Canada license-exempt RSS standard(s). Operation is subject to the following two conditions: (1) this device may not cause interference, and (2) this device must accept any interference, including interference that may cause undesired operation of the device. Le présent appareil est conforme aux CNR d'Industrie Canada applicables aux appareils radio exempts de licence. L'exploitation est autorisée aux deux conditions suivantes: (1) l'appareil ne doit pas produire de brouillage, et (2) l'utilisateur de l'appareil doit accepter toute brouillage radioélectrique subi, même si le brouillage est susceptible d'en compromettre le fonctionnement.

Information to the User:

Changes or modifications not expressly approved by the manufacturer could void your authority to operate the equipment. This equipment has been tested and found to comply with the limits for a Class B digital device, pursuant to Part 15 of the FCC Rules. These limits are designed to provide reasonable protection against harmful interference in a residential installation. This equipment generates and can radiate radio frequency energy and, if not installed and used in accordance with the instructions, may cause harmful interference to radio communications. However, there is no guarantee that interference will not occur in a particular installation. If this equipment does cause harmful interference to radio or television reception, which can be determined by turning the equipment off and on, the user is encouraged to try to correct the interference by one or more of the following measures:

- Reorient or relocate the receiving antenna.
- Increase the separation between equipment and the receiver.
- Connect the equipment to an outlet on a circuit different from that to which the receiver is connected.
- Consult the dealer or an experienced radio/TV technician for help.

Wichtige Sicherheitshinweise

- Lesen, behalten und folgen Sie diesen Anweisungen
 - Beachten Sie alle Warnhinweise
 - Verwenden Sie das Produkt nicht in der Nähe von Wasser und vermeiden Sie Tropfen oder Spritzer von Flüssigkeiten jeder Art
 - Säubern Sie das Gerät ausschließlich mit einem trockenen Tuch
 - Vermeiden Sie die Installation in der Nähe von Wärmequellen wie Heizungen, Öfen oder anderen Geräten (inkl. Verstärker), die Hitze produzieren
 - Verwenden Sie nur Hersteller zertifiziertes Zubehör
- Règles de sécurité:
- Lire, conserver et suivre ces instructions
 - Respecter toutes les consignes de sécurité
 - Nettoyer l'appareil uniquement avec un chiffon sec
 - Ne pas utiliser à proximité et éviter tout contact avec l'eau ou un quelconque liquide
 - Ne pas installer à proximité d'une source de chaleur telle que radiateur, poêle ou autres appareils (incluant les amplificateurs) qui produisent de la chaleur
 - Utiliser uniquement des accessoires recommandés par le fabricant

Zedly is an implementer member of the Wi-Fi Alliance® and this product is Wi-Fi CERTIFIED® for consumer use.



One (1) Year Limited Warranty

Zedly, Inc. warrants this product against defects in materials and/or workmanship under normal use for a period of ONE (1) YEAR from the date of purchase by the original purchaser ("Warranty Period"). If a defect arises and a valid claim is received within the Warranty Period, then as your sole remedy (and Zedly's sole liability), Zedly will at its option either 1) repair the defect at no charge, using new or refurbished replacement parts, or 2) replace the Product with a new product that is functionally equivalent to the original, in each case within 30 days following receipt of the returned Product. A replacement product or part, assumes the remaining warranty of the original Product. When a Product or part is exchanged, any replacement item becomes your property and the replaced Product or part becomes Zedly's property. Obtaining Service: To obtain warranty service, visit support.zedly.com to speak with a service agent or open a service request. Please be prepared to describe the Product that needs service and the nature of the problem. A purchase receipt is required. The Product must be insured, and shipped freight prepaid and securely packaged. You must contact support for a Return Material Authorization Number ("RMA Number") before shipping any Product, and include the RMA Number, a Copy+ of your purchase receipt and a description of the problem you are experiencing with the Product. Any claim under this Limited Warranty must be submitted to Zedly before the end of the Warranty Period. Exclusions: This warranty does not apply to: a) damage caused by failure to follow instructions relating to the Product's use or the installation of components; b) damage caused by accident, abuse, misuse, transport, neglect, fire, floods, earthquake or other external causes; c) damage caused by service performed by anyone who is not an authorized representative of Zedly; d) accessories used in conjunction with a covered Product; e) a Product or part that has been modified to alter functionality or capability; f) items intended to be periodically replaced by the purchaser during the normal life of the Product, including, without

Correct disposal of batteries in this product (Waste Electrical & Electronic Equipment) (Applicable in countries with separate collection systems)



This marking on the product, accessories or literature indicates that the product and its electronic accessories (e.g. charger, headset, USB cable) should not be disposed of with other household waste. To prevent possible harm to the environment or human health from uncontrolled waste disposal, please separate these items from other types of waste and recycle them responsibly to promote the sustainable reuse of material resources. Household users should contact either the retailer where they purchased this product, or their local government office, for details of where and how they can take these items for environmentally safe recycling. Business users should contact their supplier and check the terms and conditions of the purchase contract. This product and its electronic accessories should not be mixed with other commercial wastes for disposal. (Applicable in countries with separate collection systems) This marking on the battery, manual or packaging indicates that the batteries in this product should not be disposed of with other household waste. Where marked, the chemical symbols Hg, Cd or Pb indicate that the battery contains mercury, cadmium or lead above the reference levels in EC Directive 2006/66. If batteries are not properly disposed of, these substances can cause harm to human health or the environment. To protect natural resources and to promote material reuse, please separate batteries from other types of waste and recycle them through your local, free battery return system.

Disclaimer:

Some content and services accessible through this device belong to third parties and are protected by copyright, patent, trademark and/or other intellectual property laws. Such content and services are provided solely for

limitation, batteries, bulbs or cables; g) a Product that is used commercially or for a commercial purpose, in each case as determined by Zedly.

EXCEPT FOR BODILY INJURY, ZEDLY SHALL NOT BE LIABLE FOR (I) ANY LOST PROFITS, COST OF PROCUREMENT OF SUBSTITUTE PRODUCTS, OR ANY INCIDENTAL OR CONSEQUENTIAL DAMAGES, OR (II) ANY AMOUNTS IN EXCESS OF THE PURCHASE PRICE FOR THE PRODUCT, IN EACH CASE WHETHER RESULTING FROM THE USE OF OR INABILITY TO USE THIS PRODUCT, OR ARISING OUT OF ANY BREACH OF THIS WARRANTY, EVEN IF COMPANY HAS BEEN ADVISED OF THE POSSIBILITY OF SUCH DAMAGES. SOME STATES DO NOT ALLOW THE EXCLUSION OR LIMITATION OF INCIDENTAL OR CONSEQUENTIAL DAMAGES, SO THE ABOVE LIMITATION AND EXCLUSIONS MAY NOT APPLY TO YOU.

TO THE EXTENT PERMITTED BY APPLICABLE LAW, ZEDLY DISCLAIMS ANY AND ALL STATUTORY OR IMPLIED WARRANTIES, INCLUDING WITHOUT LIMITATION, WARRANTIES OF MERCHANTABILITY, FITNESS FOR A PARTICULAR PURPOSE AND WARRANTIES AGAINST HIDDEN OR LATENT DEFECTS. IF ZEDLY CANNOT LAWFULLY DISCLAIM STATUTORY OR IMPLIED WARRANTIES, THEN TO THE EXTENT PERMITTED BY LAW, ALL SUCH WARRANTIES SHALL BE LIMITED IN DURATION TO THE WARRANTY PERIOD. SOME STATES DO NOT ALLOW LIMITATIONS ON HOW LONG AN IMPLIED WARRANTY LASTS, SO THE ABOVE LIMITATIONS MAY NOT APPLY TO YOU.

This warranty gives you specific legal rights and you may also have other rights, which vary from state to state. To exercise your rights under this warranty, please follow the instructions above under the heading "Obtaining Service", or contact Zedly at Zedly, Inc., 584 North Cortez Dr. Margate, FL 33068