

PBT110



SPORT FIT WIRELESS EARBUDS

PBT110 | USER MANUAL



Questions?
Need some help?
This manual will help you
enjoy your new product



If you still have questions,
call our help line:
1-877-768-8481



or visit us at:
www.southern telecom.com
Click on "Product Support"



PLR IP Holdings, LLC, its licensees and affiliates, fully support all electronic waste initiatives. As responsible stewards of the environment, and to avoid violating established laws, you should properly dispose of this product in compliance with local authorities or the retailer where you purchased this product to determine a location where you can appropriately dispose of the product.

- Consult the dealer or an experienced radio/TV technician for help.
- Connect the equipment into an outlet on a circuit different from that to which the receiver is connected.
- Increase the separation between the equipment and receiver.
- Reorient or relocate the receiving antenna.

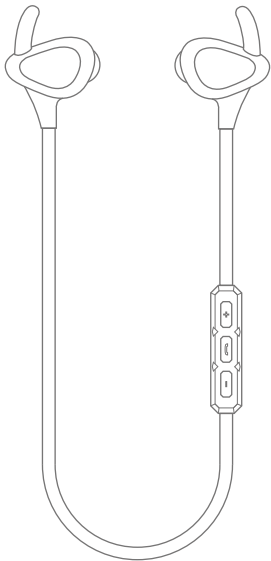
turning the equipment off and on, the user is encouraged to try to correct the interference by one or more of the following measures:
Note: This equipment has been tested and found to comply with the limits for a Class B digital device, pursuant to part 15 of the FCC Rules. These limits are designed to provide reasonable protection against harmful interference in a residential installation. This equipment generates, uses and can radiate radio frequency energy and, if not installed and used in accordance with the instructions, may cause harmful interference to radio communications. However, there is no guarantee that interference will not occur in a particular installation. If this equipment does cause harmful interference to radio or television reception, which can be determined by turning the equipment off and on, the user is encouraged to try to correct the interference by one or more of the following measures:

(1) This device may not cause harmful interference, and
(2) This device must accept any interference received, including interference that may cause undesired operation.

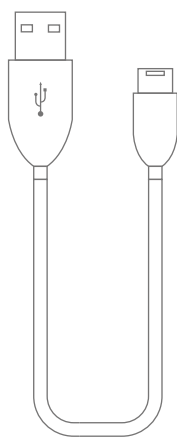
Caution: Changes or modifications not expressly approved by the party responsible for compliance could void the user's authority to operate the equipment.



IN THE BOX



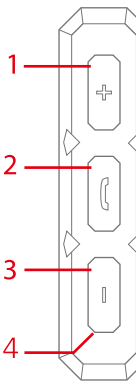
Earbuds



Micro USB
Charging Cable

LOCATION OF CONTROLS

(Front)



(Front of control piece)

1. [+] button: Quick press - Increase volume
Long press - Skip to next track
2. [Play/Pause] button: Quick press - Play/pause
Quick press - Answer/end call
Long press - Power ON/OFF
3. [-] button: Quick press - Decrease volume
Long press - Skip to previous track
4. LED Indicator

(Side)

5. USB port

(Back)

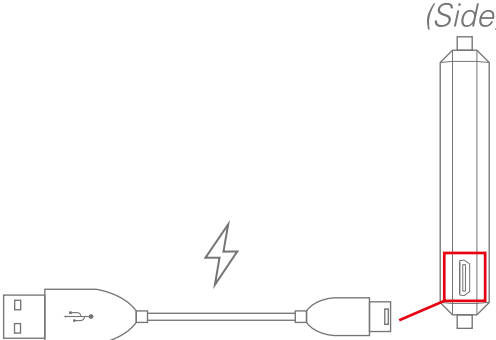
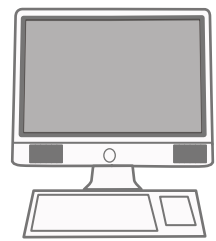
6. Microphone

(Side)



CHARGING THE EARBUDS

Attach the small end of the micro USB cable to the USB port. Connect the large end to your computer or other USB charging device/adaptor. The LED indicator will turn solid RED while charging and turn off when fully charged.

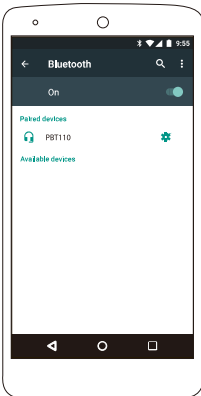
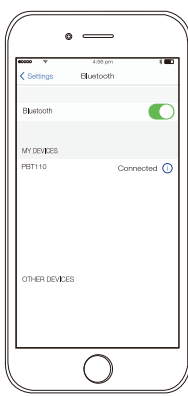


Make sure you charge the earbuds for at least 1 to 2 hours before using it for the first time.

PAIRING THE EARBUDS

1. Long press the [-] button for 8 seconds. A voice will be heard and the LED indicator will flash RED and BLUE.
2. Set your Bluetooth-enabled device to search for Bluetooth devices. When your mobile Bluetooth-enabled device finds the earbuds, select "PBT110" from the list of found devices.
3. After a successful pairing, a voice will be heard and the LED indicator will slowly flash BLUE.

On an Apple or Android
• Go to **SETTINGS > BLUETOOTH**
(Make sure Bluetooth is turned ON)



Powering ON/OFF

- Long press the [-] Button for 8 seconds to turn the earbuds ON/OFF. A tone will indicate that the earbuds are powered ON/OFF.

Answering Phone Calls

- To answer a phone call quick press the [Play/Pause] button.
- To hang up, quick press the [-] button. Music playback will automatically resume.

To enjoy music wirelessly on your earbuds, make sure that they are properly paired to your Bluetooth-enabled device. If you are pairing the device for the first time, please consult the "Pairing the Earbuds" part of this user guide.

Playing/Pausing Music

- Quick press the [Play/Pause] button to play/pause the music.

Skipping Songs

- Long press the [+] and [-] buttons to go to skip tracks.

Adjusting the Volume

- Quick press the [+] and [-] buttons to increase and decrease the volume

USING THE EARBUDS

WARRANTY

This product as supplied and distributed new by AIT, Inc. ("AIT") to the original consumer purchaser is warranted by AIT against defects in material and workmanship for a period of one year from your date of purchase ("Warranty"). In the unlikely event that this product is defective, or does not perform properly, you may within one year from your original date of purchase return it to the authorized service center for repair or exchange.

TO OBTAIN WARRANTY SERVICE:

- Call the Customer Support number located below, or go to our website portal to receive an SRO number.
- Provide proof of the date of purchase within the package (dated bill of sale).
- Prepay all shipping costs to the authorized service center, and remember to insure your return.
- Include a return shipping address (no P.O. Boxes), a telephone contact number, and the defective unit within the package.
- Describe the defect or reason you are returning the product.

Your product will be repaired or replaced, at our option, for the same or similar model of equal value if examination by the service center determines this product is defective. Products received damaged as a result of shipping, will require you to file a claim with the carrier.

The shipping address of the authorized service center is:

Customer Service Dept. 36
c/o Southern Telecom
400 Kennedy Drive
Sayreville NJ 08872

IN NO EVENT WILL AIT, ITS MANUFACTURERS, DISTRIBUTORS OR PLR IP HOLDINGS, LLC BE LIABLE FOR ANY INCIDENTAL, DIRECT, INDIRECT, SPECIAL, PUNITIVE OR CONSEQUENTIAL DAMAGES (SUCH AS, BUT NOT LIMITED TO, DAMAGES FOR LOSS OF PROFITS, BUSINESS, SAVINGS, DATA OR RECORDS) RELATED TO THIS PRODUCT. EXCEPT AS STATED HEREIN, NO OTHER WARRANTIES SHALL APPLY.



Questions?
Need some help?
This manual will help you
enjoy your new product



If you still have questions,
call our help line:
1-877-768-8481



or visit us at:
www.southern telecom.com
Click on "Product Support"