

**EUT Internal Photos**

Figure 7  
Internal View

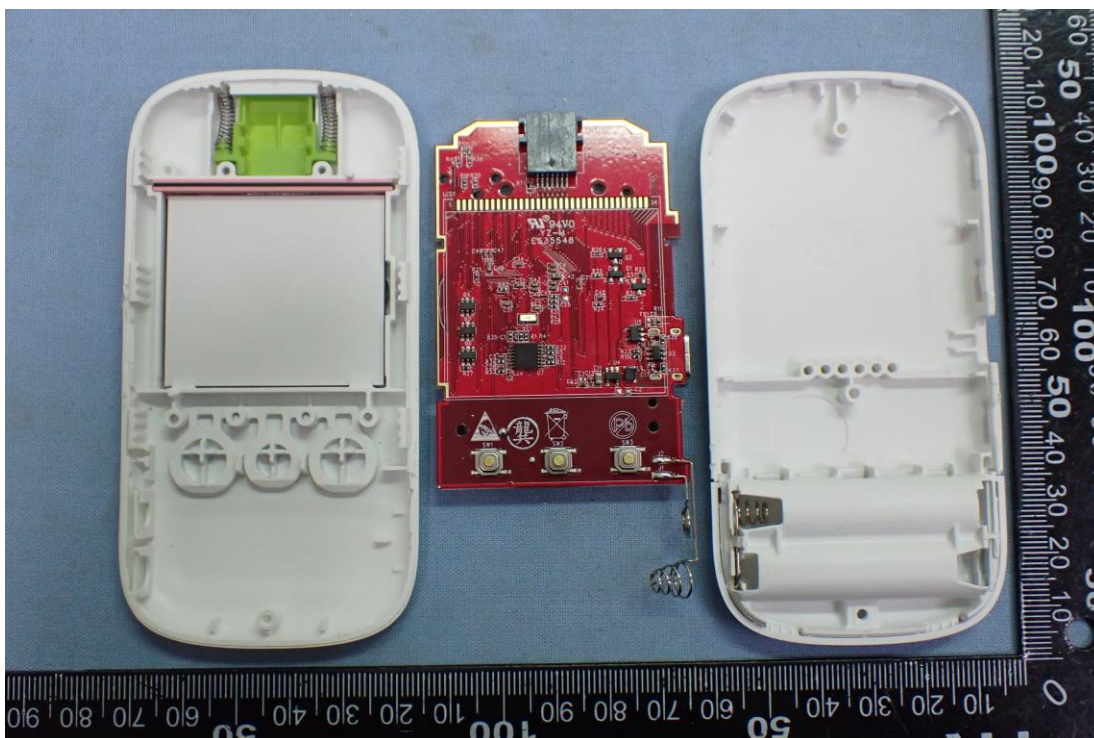


Figure 8  
Internal View (PCB Board, Back View)

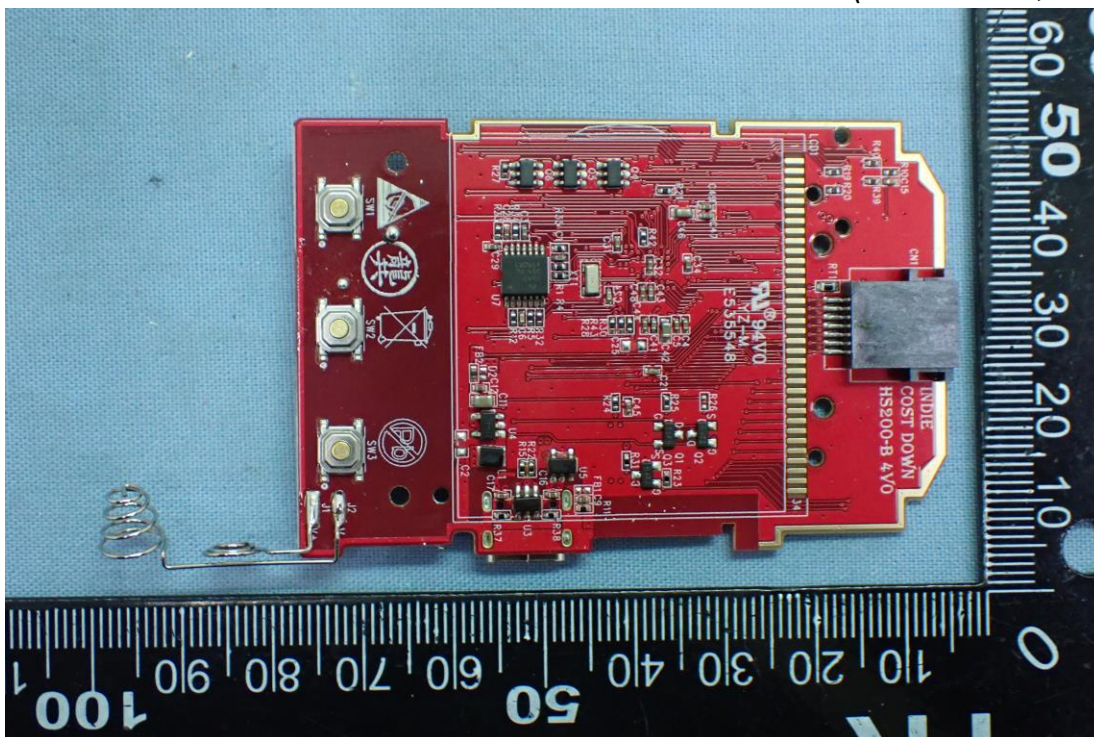




Figure 9  
Internal View (PCB Board, Front View)

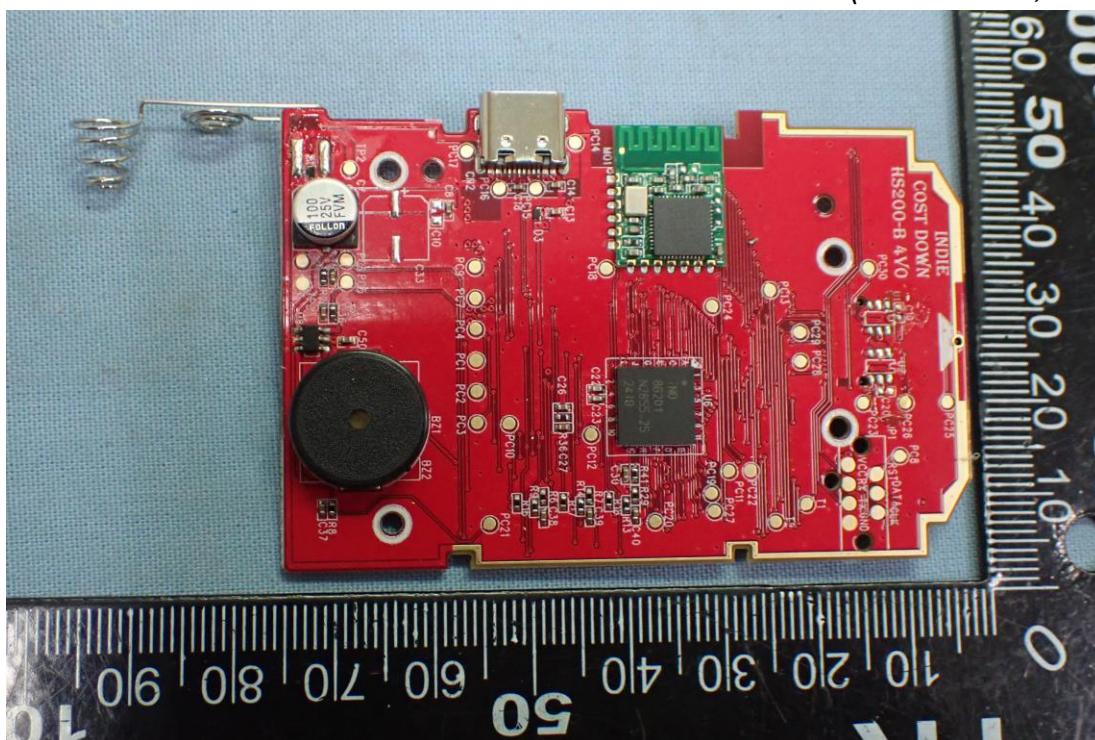


Figure 10  
Internal View (Removed RF Module)

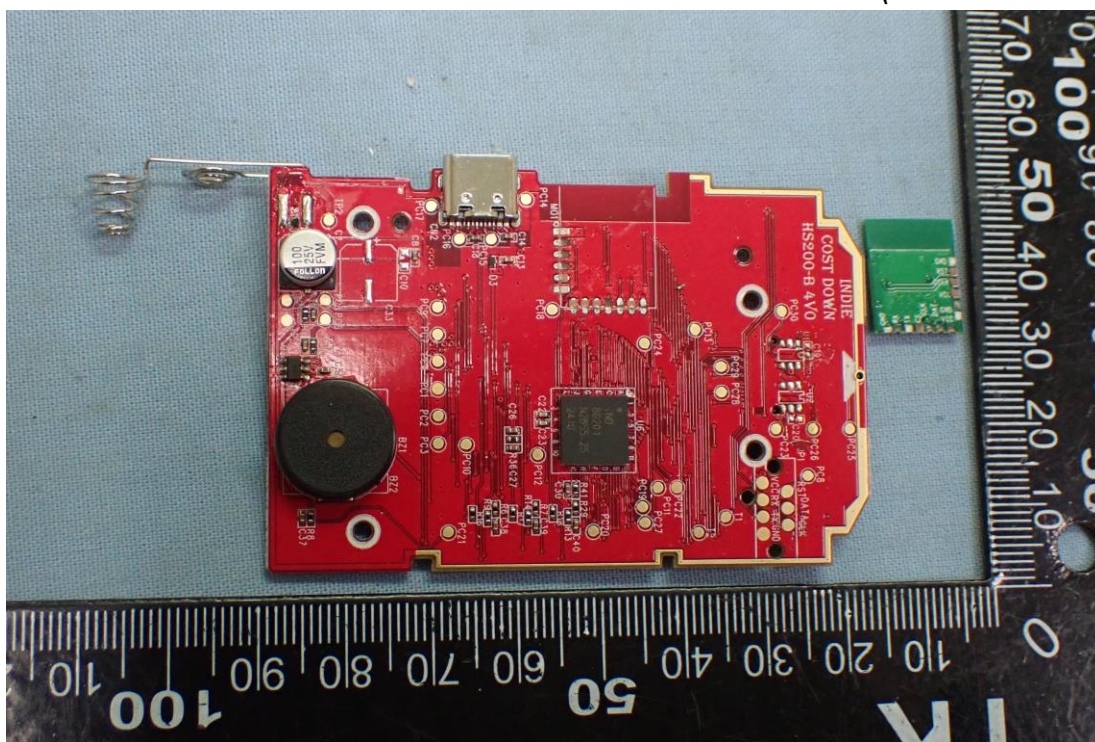




Figure 11  
Internal View (RF Module, Back View)

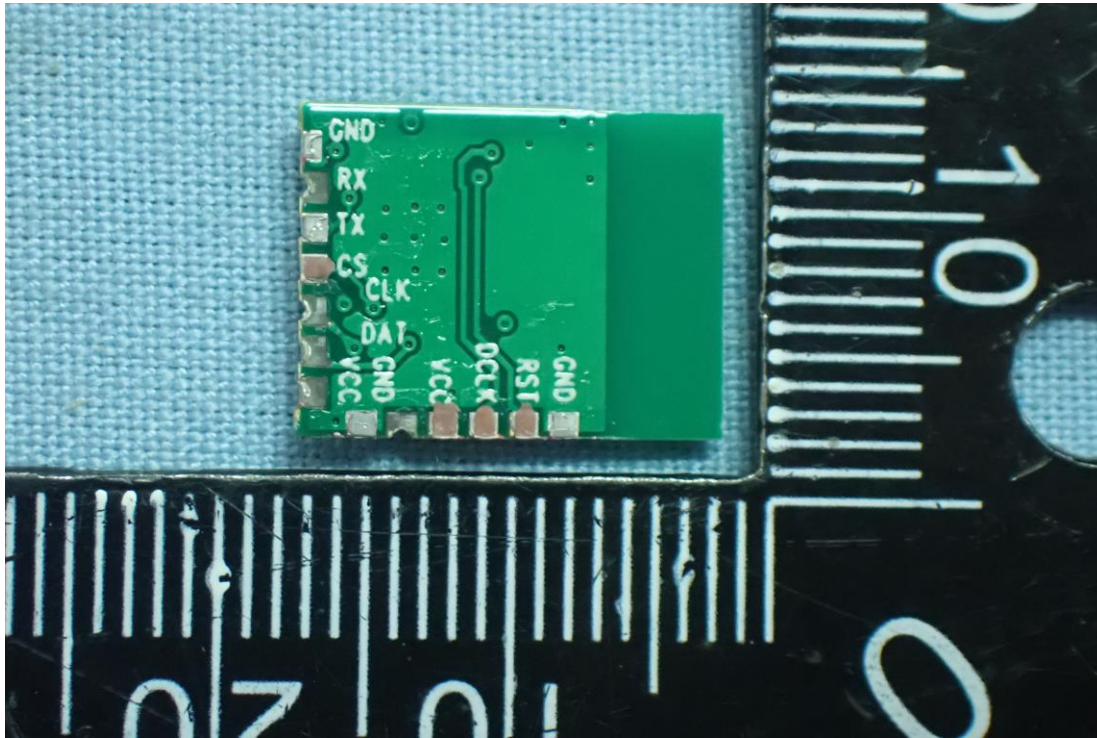


Figure 12  
Internal View (RF Module, Front View)

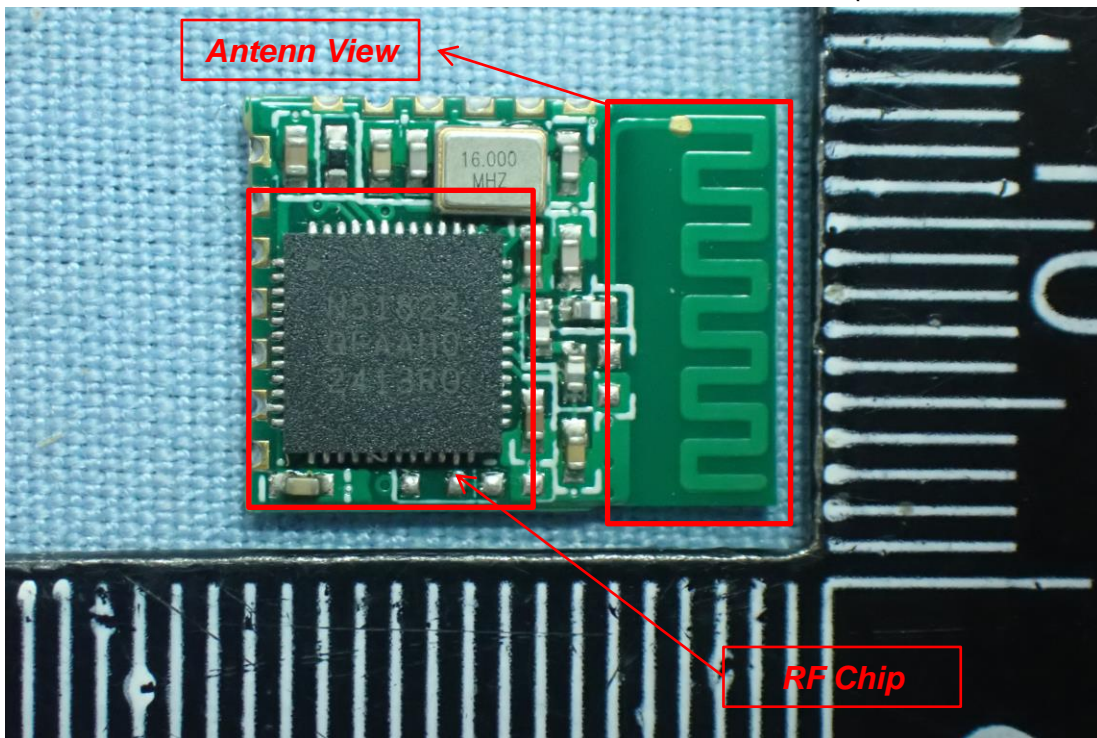




Figure 13  
Internal View (RF Chip View)

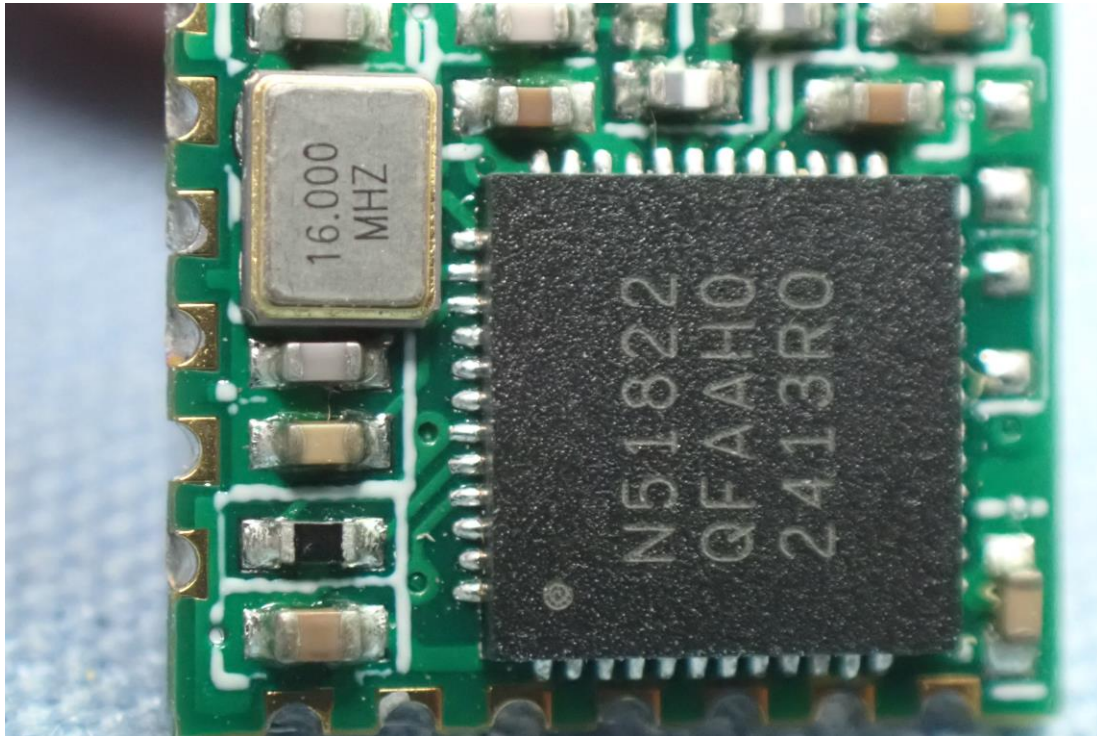


Figure 14  
Internal View (Removed LCD Panel)



Figure 15  
Internal View (LCD Panel, Back View)

