



With a four-side keypad, mono-rammy laser module, and batteries thin as, tiny sleek, wireless set puts convenience and control comfortably at your fingertips. The keyboard also offers a palm rest for comfort, vertical storage to save space. The laser mouse feels good in either hand with a contoured design and soft rubber side grips. Advanced 2.4 GHz wireless offers a long-range wireless connection that virtually eliminates delays, dropouts and interference. Included, tiny, unifying receiver stays in your laptop, and you can easily add a compatible wireless mouse or number pad without the hassle of multiple USB receivers.

- Mouse
- User Guide

- 30m Working Range: Work comfortably with ease at your desk or away
- Precision Tracking: The high-definition optical sensor tracks the mouse's movements with precision, so you can click with accuracy
- Split Focus: Split your focus between the mouse and the screen
- Split Proof: Protect your keyboard and mouse from those accidental spills
- Plug & Play: Simply insert the wireless USB receiver into your device and you'll be up and running quickly as the mouse driver will download and install automatically
- Noise Reduction: The wireless USB receiver stays in your notebook or desktop without affecting other USB ports
- Ergonomic Contoured Shape: The compact, ergonomic design helps keep you comfortable wherever you want to use your laptop—at home, at work, or on the go
- Reliable Wireless Connection: Using a compact nano receiver, provides a virtually unlimited freedom of mobility for you with a completely reliable wireless connection so you can always be productive
- Compatibility: Compatible with Windows® and Mac®

### Precautions

Please read all safety instructions and warnings thoroughly before using this product. Improper use of this product may result in damage to this or attached products.

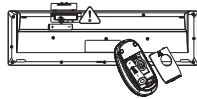
- 1. Do not disassemble the device or attempt to fix it.
- 2. Do not attempt to replace any part of this product. Battery is replaceable.
- 3. Do not crush, puncture, or dispose of in fire.
- 4. Do not store or use the device in a high temperature environment, including intense sunlight or heat.
- 5. Avoid excessive drops, bumps, abrasions and impacts.
- 6. If there is any reason to believe that there is internal damage to the device, discontinue use immediately.

If you find that the device is too hot, is emitting an odor, or is deformed, punctured or exhibits any suspicious or abnormal behavior, discontinue use immediately and contact our customer service.

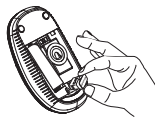
A diagram illustrating the connection of external devices. On the left, a computer mouse is shown with a cable ending in a USB connector. On the right, a mobile phone is shown with a USB cable connected to its bottom port. Both the mouse and the phone are connected to the USB ports of the device shown in the previous diagram. The mouse is connected to the top USB port, and the phone is connected to the bottom USB port.

1. Left Button
2. Right Button
3. Scroll Wheel
4. Battery Case

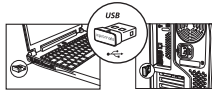
1. Remove the Battery case cover and insert the battery as shown in the image



2. Remove the Nano-USB receiver



3. Insert the Nano-USB receiver into your Desktop PC or Laptop. The drivers will download and install automatically.



**FCC Information and Copyright**

This equipment has been tested and found to comply with the limits for a Class B digital device, pursuant to part 15 of the FCC Rules. These limits are designed to provide reasonable protection against harmful interference in a residential installation. This equipment generates, uses, and can radiate radio frequency energy and, if not installed and used in accordance with the instructions, may cause interference to radio communications. However, there is no guarantee that interference will not occur in a specific installation. If you experience interference, you may wish to take the following steps:

- Reorient or relocate the receiving antenna.
- Increase the separation between the equipment and receiver.
- Connect the equipment into an outlet on a circuit different from that to which the receiver is connected.
- Consult the dealer or an experienced radio/TV technician for help.

This device complies with part 15 of the FCC Rules. Operation is subject to the following two conditions:

- (1) This device may not cause harmful interference.
- (2) This device must accept any interference, including interference that may cause undesired operation.

The user is not authorized to modify or not expressly approved by the party responsible for compliance could void the user's authority to operate the equipment.