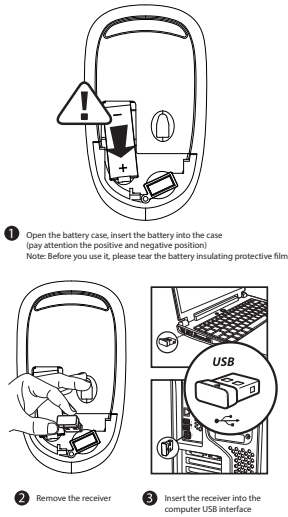


# User manual

Ultrathin silent wireless mouse



Note: The USB receiver is placed in the mouse's battery compartment

## Product features

- Silent buttons up to 3 millions clicks
- 15m wireless transmission distance
- 250Hz super high speed rate of return
- Intelligent connection, drive no needed
- Comfortable cherry wheel
- Intelligent power saving design

## Package contents:

- Wireless mouse
- Nano receiver
- User manual



## Data parameter

Data transmission: 1 Mbps  
Frequency: 2402.85MHz-2480.85MHz  
Channel: 16  
Engine: no light  
Distance: 15m  
Voltage: 1.5V  
Current: 11mA  
Mouse key life: more than 3 millions  
Size: 113\*64\*32mm  
Weight: 64g

## Tracking Performance:

Mouse resolution: 1600DPI  
Mouse rate of return: 250Hz

## System requirement:

Windows: 2000/ME/XP(\*64)/Vista/7/8/10  
Mac OS X(V10.4 above)  
Workable USB port

#### FCC Information and Copyright

This equipment has been tested and found to comply with the limits for a Class B digital device, pursuant to part 15 of the FCC Rules. These limits are designed to provide reasonable protection against harmful interference in a residential installation. This equipment generates, uses and can radiate radio frequency energy and, if not installed and used in accordance with the instructions, may cause harmful interference to radio communications. However, there is no guarantee that interference will not occur in a particular installation. If this equipment does cause harmful interference to radio or television reception, which can be determined by turning the equipment off and on, the user is encouraged to try to correct the interference by one or more of the following measures:

- Reorient or relocate the receiving antenna.
- Increase the separation between the equipment and receiver.
- Connect the equipment into an outlet on a circuit different from that to which the receiver is connected.
- Consult the dealer or an experienced radio/TV technician for help.

This device complies with part 15 of the FCC Rules. Operation is subject to the following two conditions: (1) This device may not cause harmful interference, and (2) this device must accept any interference received, including interference that may cause undesired operation.

changes or modifications not expressly approved by the party responsible for compliance could void the user's authority to operate the equipment. This equipment complies with FCC radiation exposure limits set forth for an uncontrolled environment. The device has been evaluated to meet general RF exposure requirement. The device can be used in portable exposure condition without restriction.