

Quick Installation Guide



300Mbps Wireless PCI Express Adapter

This device complies with part 15 of the FCC rules. Operation is subject to the following two conditions (1) this device may not cause harmful interference, and (2) this device must accept any interference received, including interference that may cause undesired operation.

Catalogue

Product Introduction.....	1
Package Content.....	2
Hardware Installation.....	3
Software Installation.....	4
Join a Wireless Network.....	6
Software uninstall.....	9
Appendix.....	10

Product Introduction

Product Overview

This wireless adapter is highly integrated and cost-effective Wireless Adapter that provides PCI Express interface, and full compliance with IEEE802.11a/b/g/n standards. Wireless transmission rates can reach up to 300Mbps. Using the Wireless Desktop PCI-E Adapter not only can you connect your desktop computer to a high-speed Wi-Fi network and experience faster files transmission and high-speed Internet browsing from further distances across your home than that in previous-generation Wireless n technology, but also you can enjoy high performance wireless viewing HD multimedia and real-time online war game. This Desktop PCI-E Adapter is the best choice for the desktop computer users who want to enjoy a better wireless performance and high-speed Wi-Fi network.

- Complies with IEEE 802.11n/b/g standards
- Supports PCI-E 1.1 X1 bus
- Wireless transmission rates up to 300Mbps
- Supports Cisco CCX
- Supports multiple BSSID

FCC Warning Statement

Changes or modifications not expressly approved by the party responsible for compliance could void the user's authority to operate the equipment.

This equipment has been tested and found to comply with the limits for a Class B digital device, pursuant to Part 15 of the FCC Rules. These limits are designed to provide reasonable protection against harmful interference in a residential installation. This equipment generates uses and can radiate radio frequency energy and, if not installed and used in accordance with the instructions, may cause harmful interference to radio communications. However, there is no guarantee that interference will not occur in a particular installation. If this equipment does cause harmful interference to radio or television reception, which can be determined by turning the equipment off and on, the user is encouraged to try to correct the interference by one or more of the following measures:

- - Reorient or relocate the receiving antenna.
- - Increase the separation between the equipment and receiver.
- - Connect the equipment into an outlet on a circuit different from that to which the receiver is connected.
- - Consult the dealer or an experienced radio/TV technician for help.

FCC Radiation Exposure Statement

The antennas used for this transmitter must be installed to provide a separation distance of at least 20 cm from all persons and must not be co-located for operating in conjunction with any other antenna or transmitter.

Product Introduction

Topological Graph



Step one: Install the Wireless Adapter on the host of the desktop computer

Step two: Install the Wireless Adapter driver.

Step three: Connect to the wireless network

Package Content

Package Content



Installation CD

300Mbps Wireless PCI Express Adapter

Quick Installation Guide

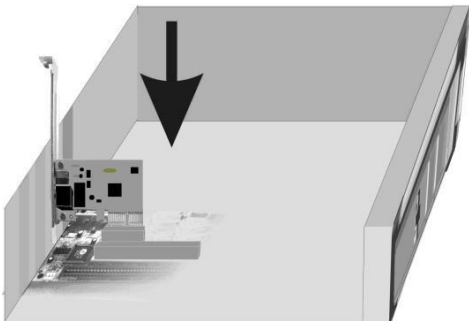
If any of the above is omitted, please contact your distributor

Friendship Prompt

Supported operating systems: Windows7 32/64, Windows8.1 32/64, Windows 10 32/64.

Hardware Installation

Hardware Installation

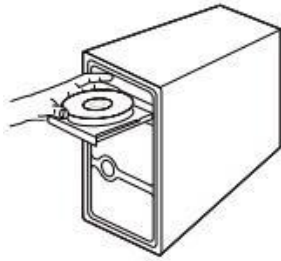


Steps:

1. Please shut down the computer, unplug its power cord and remove its chassis cover.
2. Inserting PCI EXPRESS X1 PCI Bus port of Wireless Adapter into PCI EXPRESS X1 slot of PC. Press the Wireless Adapter into the slot firmly.
3. Install chassis cover of PC.
4. Reconnect the computer power cord, and switch computer power on.

Software Installation

Windows7(As a example)



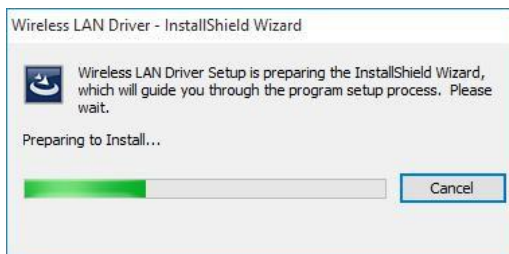
1

Put the Wireless Adapter CD-ROM into computer's CD driver.



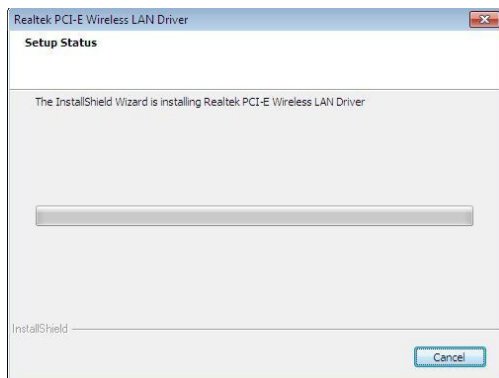
2

Double-click the computer's CD driver icon.



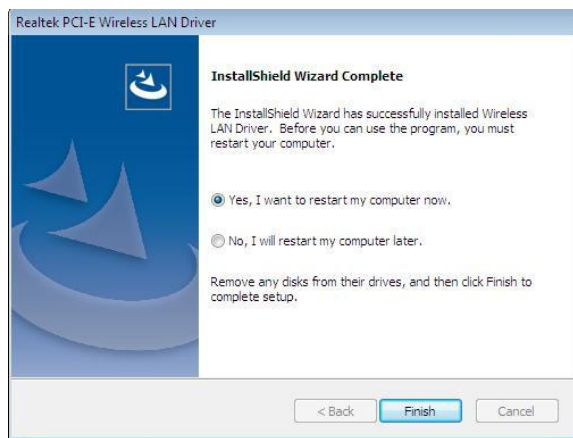
3

Double-click  , The driver starts installing the following installation wizard.




4

The driver installation is in progress.



5


Click  , You can use the wireless adapter after restarting the computer

Join a Wireless Network

Windows 7

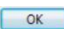


【1-1】

Click the wireless  in your system tray (lower-right corner). Click on a network (SSID) and click the Connect button or directly double-click it.



【1-2】

If you are prompted to provide a security key, simply enter it exactly as it is on your wireless router or access point and then  .




【1-3】

When **Connected** appears next to the selected wireless network (SSID), you have successfully connected to it.

Windows 8.1




【2-1】

Click the wireless icon in your system tray (lower-right corner) . The utility will display any available wireless networks in your area. Click on a network (SSID) and click the Connect button or directly double-click it.



【2-2】

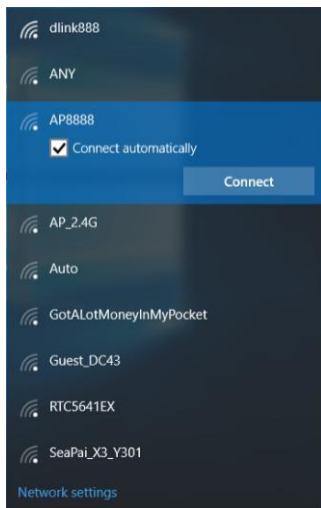
If you are prompted to provide a security key, simply enter it exactly as it is on your wireless router or access point and then click .




【2-3】

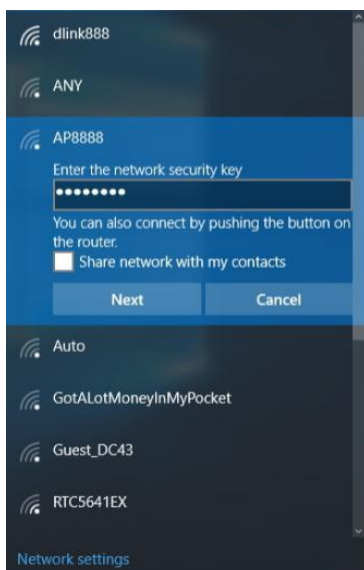
When **Connected** appears next to the selected wireless network (SSID), you have successfully connected to it.

Windows 10




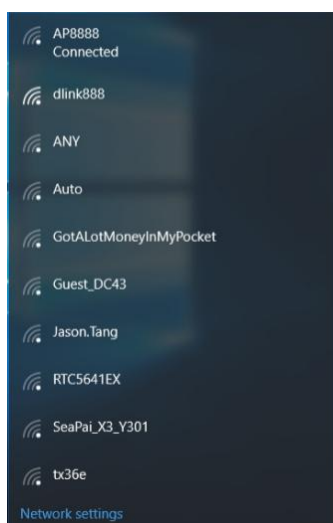
【3-1】

Click the wireless icon in your system tray (lower-right ). The utility will display any available wireless networks in your area. Click on a network (SSID) and click the Connect button or directly double-click it.



【3-2】

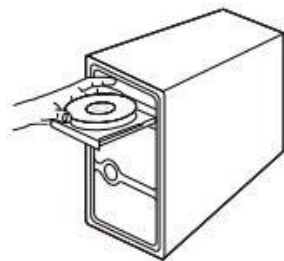
If you are prompted to provide a security key, simply enter it exactly as it is on your wireless router or access point and then .



【3-3】

When **Connected** appears next to the selected wireless network (SSID), you have successfully connected to it.

Software uninstall



1


Put the Wireless Adapter CD-ROM into computer's CD driver.

2

Double-click the computer's CD driver icon.

EAP	2017/6/14 15:50
IHV	2017/6/14 15:50
Release notes	2017/6/14 15:50
RTWLANE_Driver	2017/6/14 15:50
Autorun	2017/5/31 14:15
Install	2017/5/31 14:15
Setup	2017/5/31 14:15
setup.iss	2017/5/31 14:15
UnInstall	2017/5/31 14:15
Uninstall.iss	2017/5/31 14:15

3

Double-click  **UnInstall** , Uninstall the wireless adapter driver.

Appendix

Hardware Specifications	
Standards	IEEE 802.11n, IEEE 802.11g, IEEE 802.11b
Operating Frequency	2.4GHz
Signal Rate	Up to 300Mbps
Modulation	IEEE 802.11b:CCK, QPSK, BPSK IEEE 11g: OFDM IEEE 11n:QPSK, BPSK, 16-QAM, 64-QAM
Transmit Power	<30dBm
Indicators	2.4G WIFI
Interfaces	PCI EXPRESS X1
Antenna	2* 2dBi omni directional antennas
Dimensions (W x D x H)	65X39.4X1.6mm
Environment	Operating Temperature: 0℃~40℃ StorageTemperature:-40℃~70℃ Operating Humidity:10%~90%RH non-condensing StorageHumidity:5%~90%RH non-condensing