

Introduction to your inhaler

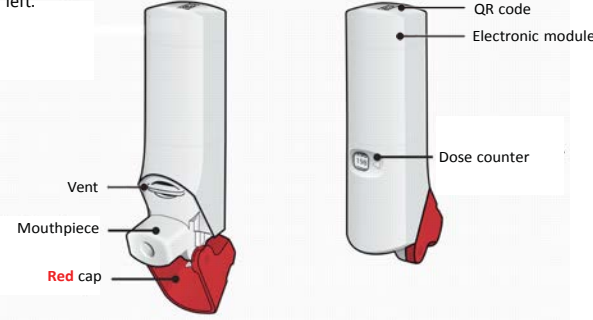
When you are ready to use your inhaler for the first time, remove the inhaler from the foil pouch.

There are 3 main parts of your inhaler including:

- the white inhaler with the mouthpiece
- the **red** cap that covers the mouthpiece and the vent of the inhaler
- the electronic module

There is an electronic module built into the top of the inhaler, which stores and transmits information (via Bluetooth to a smart device application) about your inhaler use and helps you to use your inhaler correctly. The electronic module does not control or interfere with the delivery of the medication through the inhaler.

There is a dose counter in the back of the inhaler with a viewing window that shows you how many inhalations of medicine you have left.



- Your inhaler contains 200 inhalations.
- The dose counter shows the number of inhalations left in your inhaler.
- When there are 20 inhalations left, the dose counter numbers will change to red and you should replace it with a new inhaler.
- When the dose counter displays '0', your inhaler is empty and you should stop using the inhaler.



Important

- Always close the **red** cap after each inhalation so your inhaler will be ready for you to take the next inhalation. Do not open the **red** cap unless you are ready for the next inhalation.
- You will hear a “click” sound when the **red** cap is opened fully. If you do not hear the “click” sound, the inhaler may not be activated to give you an inhalation of medicine.
- **The inhaler does not have an activation button or medicine canister.** When you open the **red** cap, an inhalation will be activated for delivery of the medicine.
- **The inhaler does not need to be Bluetooth enabled or connected to the smart device application in order for it to work and for you to take your medicine.**
- You must take your inhalation within **one minute** of opening the **red** cap.
- In general, the technique for administering the inhaler to children is similar to that for adults. Children should use the inhaler under adult supervision, as instructed by the patient’s physician.
- Do not use a spacer or volume holding chamber with the inhaler. The inhaler does not need priming.
- Do not open the **red** cap unless you are taking an inhalation. Repeatedly opening and closing the **red** cap without inhaling will waste the medicine and may damage your inhaler.
- Your inhaler contains dry powder so it is important that you do not blow or breathe into it.
- Do not expose your inhaler to medical equipment that are known sources of Electromagnetic Interference (such as MRI or CAT scanner).
- Your inhaler can be taken through standard security systems, such as metal detectors.

FCC Statement

This device complies with Part 15 of the FCC Rules. Operation is subject to the following two conditions:

- (1) This device may not cause harmful interference, and
- (2) This device must accept any interference received, including interference that may cause undesired operation.

The user shall be cautioned that changes/modifications not approved by the responsible party could void the user’s authority to operate the equipment.

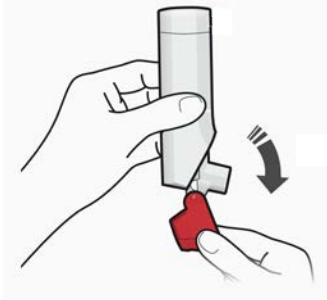
Symbol Definitions

Type B Applied Part Electronic module ingress protection classification: **IP22**

Step 1. Open

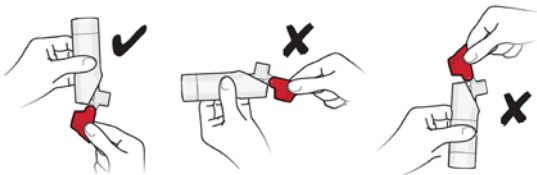
Make sure the red cap is closed before you start using your inhaler.

- Hold the inhaler upright and open the **red** cap fully until you feel and hear a “click”.
- Each time you open the **red** cap and it “clicks”, an inhalation is ready to be inhaled.



Remember:

- For correct use, **hold the inhaler upright** as you open the **red** cap.
- **Do not** hold the inhaler in any other way as you open the **red** cap.
- **Do not** open the **red** cap until you are ready to take an inhalation.
 - You must take your inhalation within **one minute** of opening the **red** cap.

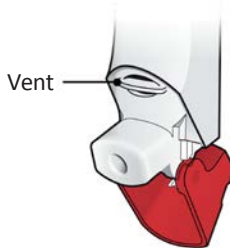


Step 2. Inhale

- Before you inhale, breathe out (exhale) through your mouth and push as much air from your lungs as you can.
- Do not exhale into the inhaler mouthpiece.

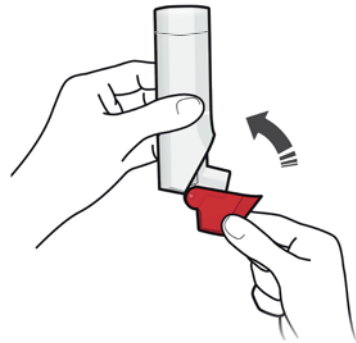


- Put the mouthpiece in your mouth and close your lips tightly around it.
- Do not block the vent above the mouthpiece with your lips or fingers.
- **Breathe in quickly and deeply through your mouth to deliver the inhalation of medicine to your lungs.**



- Remove the inhaler from your mouth.
- Hold your breath for about 10 seconds or for as long as you comfortably can.
- Your inhaler delivers your inhalation of medicine as a very fine powder that you may or may not taste or feel.

Step 3. Close



- Close the **red** cap firmly over the mouthpiece.
- **Make sure you close the red cap after each inhalation so that the inhaler will be ready for your next inhalation.**

If you need another inhalation, close the **red** cap and then repeat steps 1-3.



Storing your inhaler

- Store your inhaler at room temperature between 59°F and 77°F (15°C and 25°C).
- Avoid exposure to extreme heat, cold or humidity.
- Keep the **red** cap on the inhaler closed during storage.
- Keep your inhaler dry and clean at all times.
- **Keep your inhaler and all medicines out of reach of children.**

Cleaning your inhaler

- **Do not wash or put any part of your inhaler in water.**
- Your inhaler contains a powder and must be kept clean and dry at all times.
- If the mouthpiece needs cleaning, gently wipe it with a dry cloth or tissue.

Replacing your inhaler

- The dose counter on the back of your inhaler shows how many inhalations you have left.
- When there are 20 inhalations left, the dose counter numbers will change to red and you should refill your prescription or ask your doctor for another prescription.
- When the dose counter displays '0', your inhaler is empty and you should stop using the inhaler and dispose of it appropriately.
- Dispose of the inhaler appropriately 13 months after removing it from the foil pouch for the first time, when the dose counter displays '0', or after the expiration date on the package, whichever comes first.
- Your inhaler contains a lithium-manganese dioxide battery and should be disposed of in accordance with state and local regulations.

Support

- If you have any questions about your inhaler, go to [www.\[TRADENAME\].com](http://www.[TRADENAME].com) or call 1-XXX-XXX-XXXX.

Setting up connectivity to your smart device

- Visit the App Store on your smart device and search for [APPNAME].
- Download the app to your smart device.
- Open the app on your smart device and follow the in-app instructions.
- If you are having trouble setting up your [APPNAME] app, go to [\[TRADENAME\].com/app](http://[TRADENAME].com/app) or call 1-XXX-XXX-XXXX for assistance.

