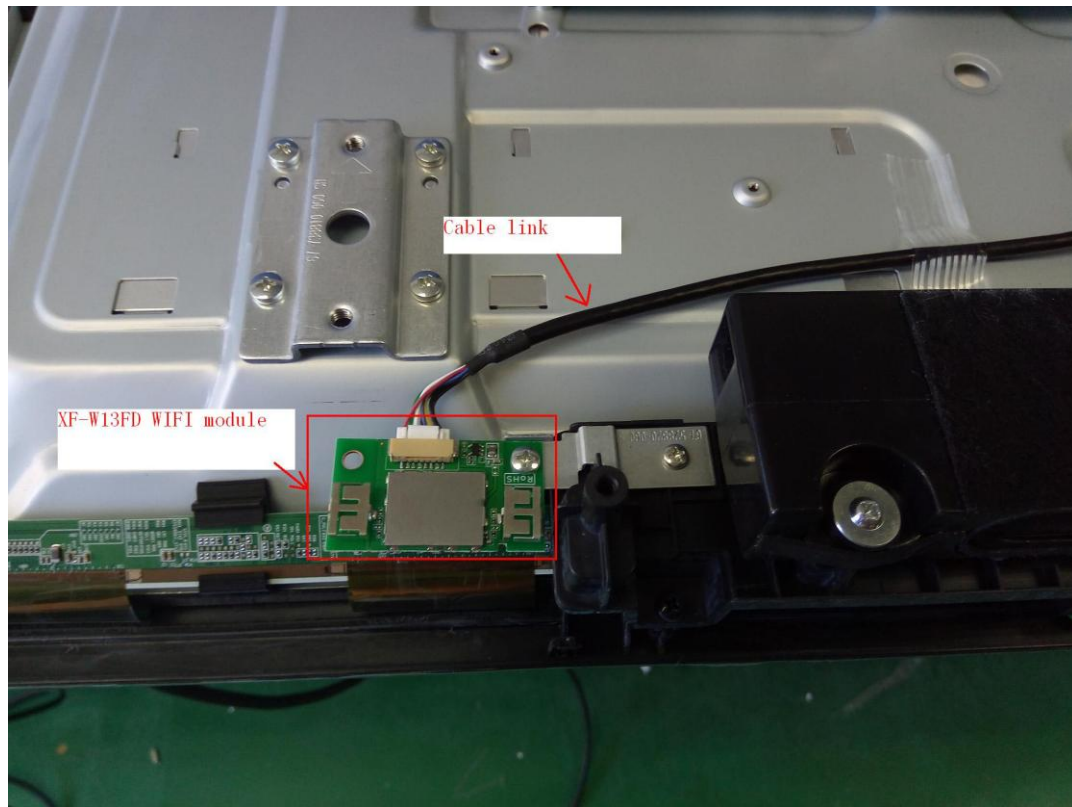
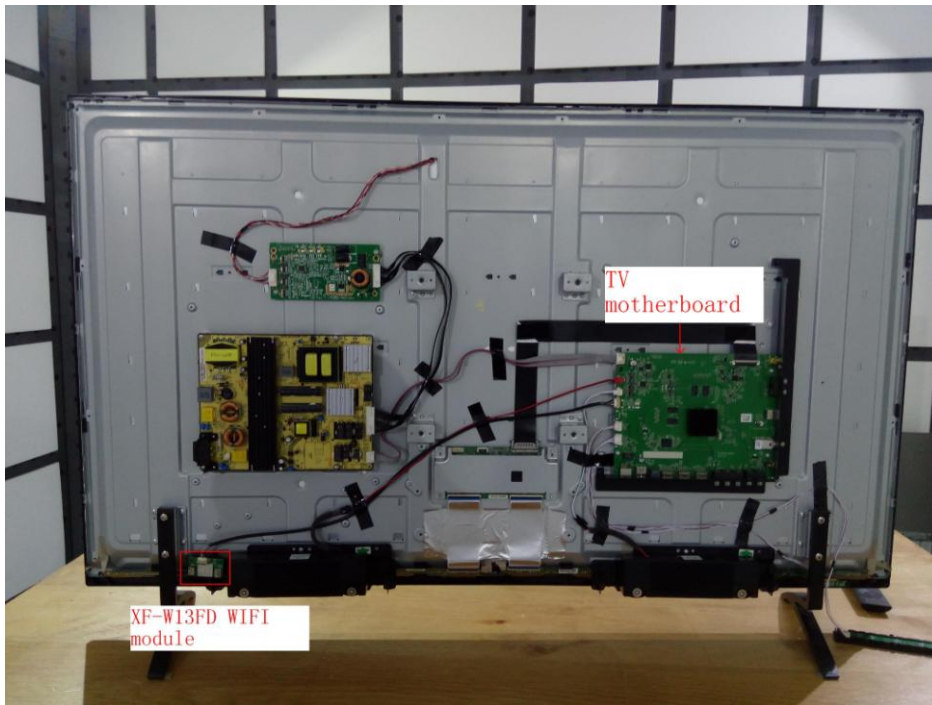


XF-W13FD WIFI Integration Manual

This module is installed in the IP TV and makes the TV surf the internet, the installation and location are as following: the module is installed in the place which the TV had been reserved, then connect module and TV by cable link, the TV motherboard had been integrated with module's driver and operation software, so the end user can watch the IPTV directly. The Module integration is only conducted by authorised or dedicated installers. The module implemented by the module grantee itself and the module will be only implemented in TVs





FCC CAUTION:

Any changes or modifications not expressly approved by the party responsible for compliance could void the user's authority to operate the equipment.

This device complies with Part 15 of FCC Rules. Operation is Subject to following two conditions:

- (1) This device may not cause harmful interference, and
- (2) This device must accept any interference received including interference that cause undesired operation.

FCC STATEMENT:

This equipment has been tested and found to comply within the

limits for a Class B digital device, pursuant to part 15 of the FCC Rules. These limits are designed to provide reasonable protection against harmful interference in a residential installation.

This equipment generates, uses, and can radiate radio frequency energy and, if not installed and used in accordance with the instructions, may cause harmful interference to radio

communications. However, there is no guarantee that interference will not occur in a particular installation. If this equipment does cause harmful interference to radio or television reception, which can be determined by turning the equipment off and on, the user is encouraged to try to correct the interference by one or more of the following measures:

- Reorient or relocate the receiving antenna
- Increase the separation between the equipment and receiver
- Connect the equipment into an outlet on a different circuit from that to which the receiver is connected
- Consult the dealer or an experienced TV technician for help.

USERS MANUAL OF THE END PRODUCT-TVS:

The end user has to be informed that any changes or modifications not expressly approved by the manufacturer could void the user's authority to operate this equipment. additional FCC part 15.19 statement is required to be available in the user's manual: This device complies with Part 15 of FCC rules. Operation is subject to

the following two conditions: (1) this device may not cause harmful interference and (2) this device must accept any interference received, including interference that may cause undesired operation.

LABEL OF THE END PRODUCT-TVS:

The final end product TVS must be labeled in a visible area with the following “Contains FCC ID: 2AJSWXF-W13FD, the following FCC part 15.19 statement has to also be available on the label: This device complies with Part 15 of FCC rules. Operation is subject to the following two conditions: (1) this device may not cause harmful interference and (2) this device must accept any interference received, including interference that may cause undesired operation.

The OEM integrator or the host manufacturer is responsible for the overall compliance of the host products