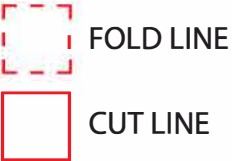
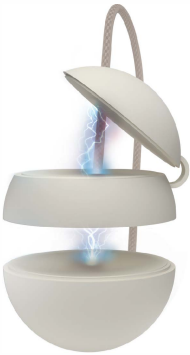


PRINT ARTWORK ON DIRECTLY ON PAPER.
DO NOT PRINT RED FOLD AND CUT LINES. OPEN USER MANUAL DIMENSIONS: 6.46”W x 5.5” H



15W 3-IN-1 WIRELESS
MAGNETIC CHARGER

IJAST419-FB



USER
MANUAL

•YOUR IJOY PRODUCT

Thank you for purchasing and using the "IJOY WIRELESS MAGNETIC CHARGER". This product provides a high quality charging experience. Before using this product, carefully read this manual to in order to operate at maximum benefit. Please ask your local dealer or call us if you have any questions.

IJOY Wireless Magnetic Charger x1
User Manual x1
Charging cable x1

•PRODUCT SPECIFICATIONS

- Compatibility: All Qi-compatible devices
- Smart Phone:
Input: 9V/2A, 5V/2A; Output: 15W(Max)
- Earphone:
Input: 5V/1A, Output: 3W(Max)
- Apple Watch:
Input: 5V/1A, Output: 2.5W (Max)
- Working frequency: 110-205KHZ
- Conversion efficiency: 75%

•COMPATIBLE FEATURES

-iPhone® 12 and newer models
-MagSafe® phone cases
-Apple® AirPods® Generation 3/2/Pro/Pro 2
-Apple® Watch: 8, Ultra, 7, 6, SE, 5, 4, 3, 2(Not compatible with Series 1)



Referenced brands and trademarks are for compatibility listing only, not associated with this product. All trademarks are registered to their respective owners. Apple®, iPhone®, Apple watch®, Airpods® are licensed or registered trademarks of Apple Inc.

QUEST USA CORP.
495 Flatbush Ave Brooklyn, NY 11225

© GOIJOY & IJOY are registered trademarks of QUEST USA CORP.
All other trademarks and trade names are property of their respective owners.
Designed by GOIJOY & IJOY in New York. All rights reserved QUEST USA CORP.

Made in Malaysia.

•OTHER IMPORTANT SAFETY INFORMATION

Disposal of old electronic & electronic equipment (Applicable in the European Union and other European Counties with separate collection systems) The trash can symbol (seen on the bottom) on the production indicates that this product shall not be treated as household waste. Instead it shall be handed over to the applicable collection point for recycling of electronic equipment. By ensuring this product is disposed of correctly, you will help prevent potential negative consequences for the environment and human health, which could otherwise be caused by inappropriate waste handling. For more detailed information about this product, please contact your local household waste disposal service or the shop where you purchased this item.



•PRODUCT DIAGRAM

The wireless magnetic charger has a built-in magnetic mechanism for charging mobile phones. Its small and exquisite design providing a convenient and versatile charging experience.



NOTE: No power adapter, if you need to purchase or use the original mobile phone adapter, please use QC2.0 adapter.

•WARNING

1. Do not squeeze or collide.
2. Do not disassemble or put into the fire, water, to avoid causing short circuit leakage.
3. Do not use the wireless charger in severe high temperature, wet or corrosive environment to avoid leakage of damaged circuit.
4. Do not place too close to the magnetic stripe or chip magnetic card (ID card, bank card, etc.), to avoid causing magnetic card failure.
5. Please keep the distance between the implanted medical device (pacemakers, cochlear implants, etc.) and the wireless charger at least 20cm to avoid potential devices for the medical device.
6. Children should be watched after to ensure that they don't play with the wireless charger as toys to avoid unnecessary accidents.
7. Please keep the charger and receiver away from water and other liquids.
8. To clean the charger, ensure that the power supply is disconnected.
9. Use the ambient temperature maintained at 0-45°C.

•BATTERY DISPOSAL

Please do not attempt to change the battery yourself. If the battery has died, you should follow the disposal instructions listed here. Never dispose of used batteries/electronics with ordinary solid wastes. Always dispose of used batteries/electronics in accordance with the prevailing community regulations that apply to the disposal of batteries/electronics. If there are no local regulations concerning battery/electronics disposal, please dispose of the device in a waste bin for electronic devices. Many electronics retailers now recycle batteries and other electronic components at no charge.

•OTHER IMPORTANT SAFETY INFORMATION

Disposal of old electrical & electronic equipment (Applicable in the European Union and other European Countries with separate collection systems.) The trash can symbol (seen on bottom right) on the product or on its packaging indicates that this product shall not be treated as household waste. Instead it shall be handed over to the applicable collection point for recycling of electronic equipment. By ensuring this product is disposed of correctly, you will help prevent potential negative consequences for the environment and human health, which could otherwise be caused by inappropriate waste handling. For more detailed information about this product, please contact your local household waste disposal service or the shop where you purchased this item.

•FCC ID STATEMENT

FCC ID: 2AJQ7TRAVELCHARGER

This device complies with Part 15 of the FCC Rules. Operation is subject to the following two conditions:

- (1) This device may not cause harmful interferencex and
- (2) This device must accept any interference received, including interference that may cause undesired operation.

Warning: Changes or modifications not expressly approved by the party responsible for compliance could void the user's authority to operate the equipment.

NOTE: This equipment has been tested and found to comply with the limits for a Class B digital device pursuant to Part 15 of the FCC Rules. These limits are designed to provide reasonable protection against harmful interference in a residential installation. This equipment generates uses and can radiate radio frequency energy andx if not installed and used in accordance with the instructionsx may cause harmful interference to radio communications. Howeverx there is no guarantee that interference will not occur in a particular installation. If this equipment does cause harmful interference to radio or television reception which can be determined by turning the equipment off and onx the user is encouraged to try to correct the interference by one or more of the following measures:
Reorient or relocate the receiving antenna.
Increase the separation between the equipment and receiver.
Connect the equipment into an outlet on a circuit different from that to which the receiver is connected.
Consult the dealer or an experienced radio/TV technician for help.

FCC Radiation Exposure Statement
This equipment complies with FCC radiation exposure limits set forth for an uncontrolled environment. This equipment should be installed and operated with minimum distance of 20 cm between the radiator and your body. This transmitter must not be co-located or operating in conjunction with any other antenna or transmitter.