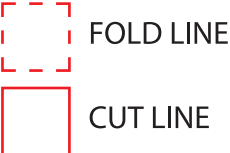


PRINT ARTWORK ON DIRECTLY ON PAPER.
DO NOT PRINT RED FOLD AND CUT LINES. OPEN USER MANUAL DIMENSIONS: 6.46”W x 5.5” H



ijoy

Wireless Magnetic Power Bank

FESTIVAL
RGB 5000MAH
POWERBANK

IJ10385-FB



USER
MANUAL

•YOUR IJOY PRODUCT

Thank you for purchasing and using the “RGB 5000MAH POWERBANK”. This product provides a high quality charging experience. Before using this product, carefully read this manual in order to operate at maximum benefit. Please ask your local dealer or call us if you have any questions.

- 1 - MAGNETIC WIRELESS POWER BANK
- 1 - CHARGING CABLE
- 1 - USER MANUAL

•PRODUCT SPECIFICATIONS

- Size: 100*67*19 mm
- Rated Energy: 18.5Wh/3.7V
- Battery Capacity: 5000mAh
- Output Capacity: 3300mAh
- Input Voltage: 5V=2A
- Type-A/C Output Voltage: 5V=2A
- Wireless Output: 5W
- FCC ID: 2AJQ7POWERBANK2

ijoy

Distributed by QUEST USA CORP.
495 Flatbush Ave Brooklyn, NY 11225

© GOIJOY & IJOY are registered trademarks of QUEST USA CORP. All other trademarks and trade names are property of their respective owners. Designed by GOIJOY & IJOY in New York. All rights reserved QUEST USA CORP.

Made in China.

•FCC ID STATEMENT

This device complies with part 15 of the FCC Rules. Operation is subject to the following two conditions:

- (1) This device may not cause harmful interference, and
- (2) this device must accept any interference received, including interference that may cause undesired operation.

Warning: Changes or modifications not expressly approved by the party responsible for compliance could void the user’s authority to operate the equipment.

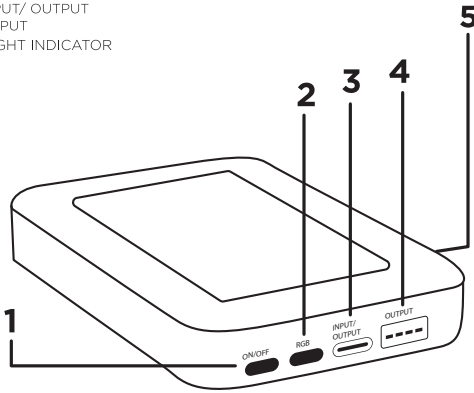
NOTE: This equipment has been tested and found to comply with the limits for a Class B digital device, pursuant to Part 15 of the FCC Rules. These limits are designed to provide reasonable protection against harmful interference in a residential installation. This equipment generates uses and can radiate radio frequency energy and, if not installed and used in accordance with the instructions, may cause harmful interference to radio communications. However, there is no guarantee that interference will not occur in a particular installation. If this equipment does cause harmful interference to radio or television reception, which can be determined by turning the equipment off and on, the user is encouraged to try to correct the interference by one or more of the following measures:

Reorient or relocate the receiving antenna.
Increase the separation between the equipment and receiver. Connect the equipment into an outlet on a circuit different from that to which the receiver is connected.
Consult the dealer or an experienced radio/TV technician for help.

RF warning statement:
The device has been evaluated to meet general RF exposure requirement. The device can be used in portable exposure condition without restriction.

•BUTTONS & INPUTS

- 1. POWER
- 2. RGB MODES/BRIGHTNESS
- 3. TYPE-C INPUT/ OUTPUT
- 4. USB A OUTPUT
- 5. POWER LIGHT INDICATOR



•FUNCTIONS

POWER

- There are two button switches at the bottom of the power bank. Press and hold the RGB switch for 2 seconds to turn on/off the LED light.

CYCLE THROUGH COLOR MODES

- In order to cycle through the available color modes, press once the RGB switch for changing the light modes.

AVAILABLE MODES

- Fixed Color Mode:
White-Warm White-Red-Green-Blue-Yellow-Purple-Cyan-Flash
-Strobe-Fade-Smooth

•COMPATIBILITY INFORMATION

- Magnetic Feature Compatible with iPhone 12/PRO/PRO MAX/MINI and newer.

•OTHER IMPORTANT SAFETY INFORMATION

Disposal of old electronic & electronic equipment (Applicable in the European Union and other European Counties with separate collection systems) The trash can symbol (seen on the bottom) on the production indicates that this product shall not be treated as household waste. Instead it shall be handed over to the applicable collection point for recycling of electronic equipment. By ensuring this product is disposed of correctly, you will help prevent potential negative consequences for the environment and human health, which could otherwise be caused by inappropriate waste handling. For more detailed information about this product, please contact your local household waste disposal service or the shop where you purchased this item.

⚠ For your safety, please always use appropriate 5V input charger/Adapter to charge the product. DO NOT USE Quick Charging USB Adapter to charge the product, as it might damage the product.

⚠ CAUTION: Risk of Fire and Burns.Do Not Open, Crush, Heat Above 40 C or Incinerate. Follow Manufacturer’s Instructions.



•WARNING

- Do not disassemble or modify the product.
- Do not put pressure on this product and prevent any impact.
- Keep the product away from fire and do not submerge it in water.
- For indoor use ONLY. Do not use the product in hot, humid or corrosive conditions to avoid damage to the internal circuit.
- Do not place cards equipped with a magnetic strip or chip (such as ID and credit cards) close to the product, in order to avoid possible card reading failures.
- Do not place metal objects (such as coins or keys) on the product.
- Keep a distance of at least 20cm between medical devices (pacemakers, cochlear implants, etc.) and the product, in order to avoid potential interference with the medical devices.
- Keep the product away from children. This product is not a suitable children's toy.
- In order to increase charging performance, avoid using the product in places with high temperatures or lack of heat dissipation.
- Unplug the device when unused for long periods of time.