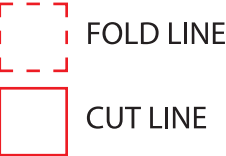


PRINT ARTWORK ON DIRECTLY ON PAPER.  
DO NOT PRINT RED FOLD AND CUT LINES. OPEN USER MANUAL DIMENSIONS: 6.46”W x 5.5” H



KLAZZO

WIRELESS HEADPHONES

KLAZZO

FCC ID: 2AJQ7KLAZZO



USER  
MANUAL

for use with  
 Bluetooth  
enabled devices

•YOUR KLAZZO PRODUCT

Thank you for purchasing and using the "Klazzo Headphones" Wireless Headphones. This product can provide a high quality listening experience through phones, computers, and multimedia. Before using this product, carefully read this manual to in order to operate at maximum benefit. Please ask your local dealer or call us if you have any questions.

IJOY KLAZZO x 1  
Charging Cable x 1  
User Manual x 1  
AUX Cable x 1

•PRODUCT SPECIFICATIONS

- PLAYTIME: UP TO 18 HOURS
- CHARGE TIME: 4 HRS
- BATTERY CAPACITY: 400 MAH
- FEATURES: BT/LED
- BLUETOOTH VERSION: 5.0
- BLUETOOTH RANGE: UP TO 10M

Distributed by  
Quest USA Corp.  
495 Flatbush Ave Brooklyn, NY 11225

© GOIJOY & IJOY are registered trademarks of Quest USA Corp. All other trademarks and trade names are property of their respective owners. Designed by GOIJOY & IJOY in New York. All rights reserved Quest USA Corp.

Made in China.

The Bluetooth® word mark and logos are registered trademarks owned by Bluetooth SIG, Inc. and any use of such marks by QUEST USA CORP. is under license. Other trademarks and trade names are those of their respective owners.

•IMPORTANT: Charge the device when it is turned off.



•BATTERY CAUTION

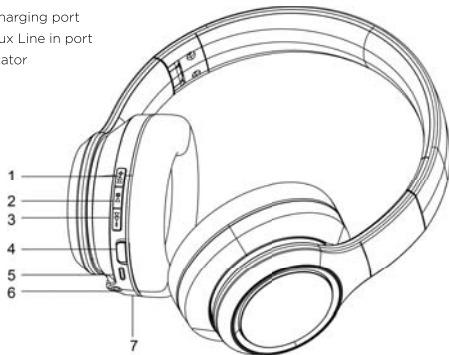
The battery used in this device may present a risk of fire, explosion or chemical burn if used incorrectly. Never use or charge the battery if it appears to be leaking, discolored, deformed or in any way abnormal. Never disassemble the unit or attempt to remove the battery as that could cause leakage of alkaline solution or other electrolytic substances. Never expose the battery to any liquid. Never expose the battery to excessive heat such as direct light or fire. Always keep the battery out of the reach of infants and small children.

•BATTERY DISPOSAL

Please do not attempt to change the battery yourself. If the battery has died, you should follow the disposal instructions listed here. Never dispose of used batteries/electronics with ordinary solid wastes. Always dispose of used batteries/electronics in accordance with the prevailing community regulations that apply to the disposal of batteries/electronics. If there are no local regulations concerning battery/electronics disposal, please dispose of the device in a waste bin for electronic devices. Many electronics retailers now recycle batteries and other electronic components at no charge.

•FEATURES

- 1- Volume + ( Short press) / Next song (Long press)
- 2- Play / Pause / Pick up / Hang up / Reject / Re-dial calls
- 3- Volume - ( Short press) / Previous song (Long press)
- 4- On /Off
- 5- Type C Charging port
- 6- 3.5mm Aux Line in port
- 7- LED Indicator



•OTHER IMPORTANT SAFETY INFORMATION

Disposal of old electronic & electronic equipment (Applicable in the European Union and other European Counties with separate collection systems) The trash can symbol (seen on the bottom) on the production indicates that this product shall not be treated as household waste. Instead it shall be handed over to the applicable collection point for recycling of electronic equipment. By ensuring this product is disposed of correctly, you will help prevent potential negative consequences for the environment and human health, which could otherwise be caused by inappropriate waste handling. For more detailed information about this product, please contact your local household waste disposal service or the shop where you purchased this item.



•WARNING

1. Do not expose this product to rain or damp conditions.
2. Prevent this item from falling as it could cause serious damage.
3. Do not dismantle, repair or modify this product by yourself, contact an authorized specialist.
4. In order to avoid any risk, do not dispose of this product inappropriately or throw it into the re as there is a built-in Lithium battery.
5. Clean with a dry cloth.
6. Do not place this item near sources of heat or expose to direct sunlight.
7. Do not insert any metal objects into this device as there is a risk of causing a short circuit in the unit.
8. Excessive sound pressure from earphones and headphones can cause hearing loss.

•OPERATION

Switch ON/ OFF button to ON position to power on the headphone, The White LED will flash quickly to indicate that the device is ready to be paired.

From the Bluetooth menu of your device, search for new devices and select "Klazzo Headphones" to pair. Once they are paired successfully, you will hear a confirmation sound.

Switch ON/ OFF button to OFF position to power off the headphone.

•AUDIO INPUT (LINE IN)

Insert the audio cable 3.5mm into the headphones, and connect the other end of the audio cable into your mp3 / mp4 player / mobile phone or other compatible device to play your music.

•HANDS-FREE CALLS

When the device is connected via Bluetooth, you can use the hands-free function. Short press Play Button to pick up / hang up an incoming call and long press it to reject the incoming call. Short press Play Button twice consequently to redial the last phone number.

•CHARGING

Use the cable in the package for charging. Connect USB cable to computer / AC adapter. Connect the Type C USB end of this cable into the Type C USB port of your device. During charging, the indicator light will turn red. When the headphone is fully charged the red indicator light will turn off.

•FCC ID STATEMENT

This device complies with part 15 of the FCC Rules. Operation is subject to the following two conditions:  
(1) This device may not cause harmful interference, and  
(2) this device must accept any interference received, including interference that may cause undesired operation.  
Warning: Changes or modifications not expressly approved by the party responsible for compliance could void the user's authority to operate the equipment.

NOTE: This equipment has been tested and found to comply with the limits for a Class B digital device, pursuant to Part 15 of the FCC Rules. These limits are designed to provide reasonable protection against harmful interference in a residential installation. This equipment generates uses and can radiate radio frequency energy and, if not installed and used in accordance with the instructions, may cause harmful interference to radio communications. However, there is no guarantee that interference will not occur in a particular installation. If this equipment does cause harmful interference to radio or television reception, which can be determined by turning the equipment off and on, the user is encouraged to try to correct the interference by one or more of the following measures:

Reorient or relocate the receiving antenna.  
Increase the separation between the equipment and receiver, Connect the equipment into an outlet on a circuit different from that to which the receiver is connected.  
Consult the dealer or an experienced radio/TV technician for help.

RF warning statement:  
The device has been evaluated to meet general RF exposure requirement. The device can be used in portable exposure condition without restriction.