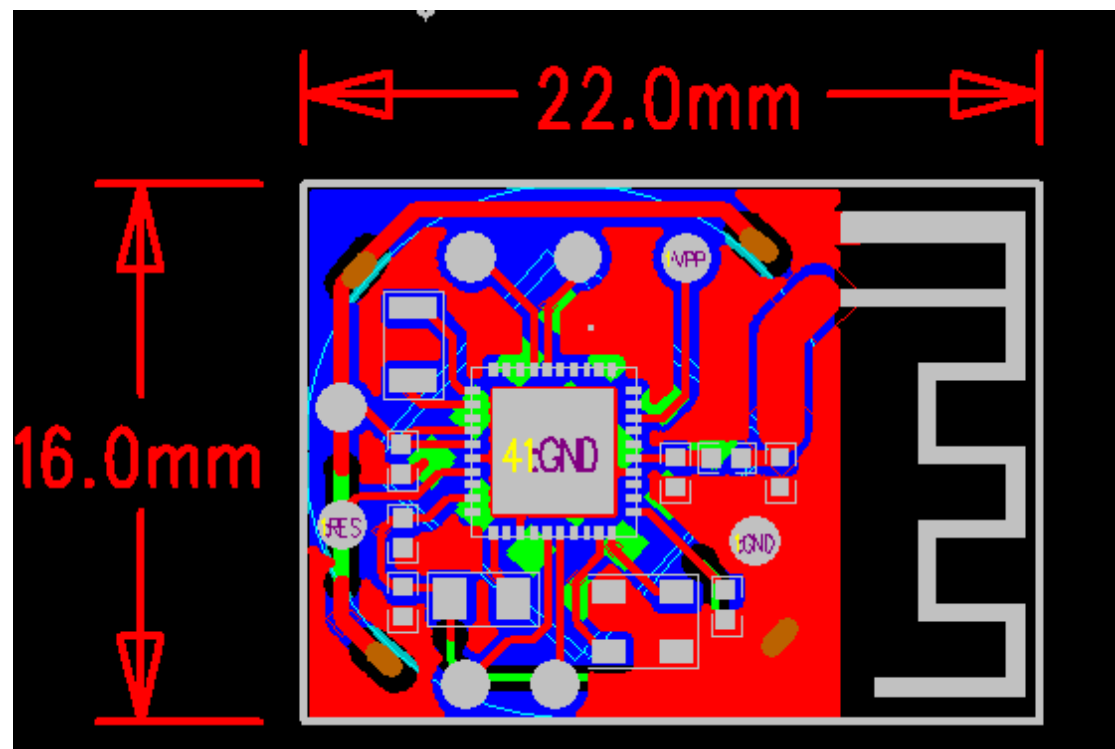


User manual

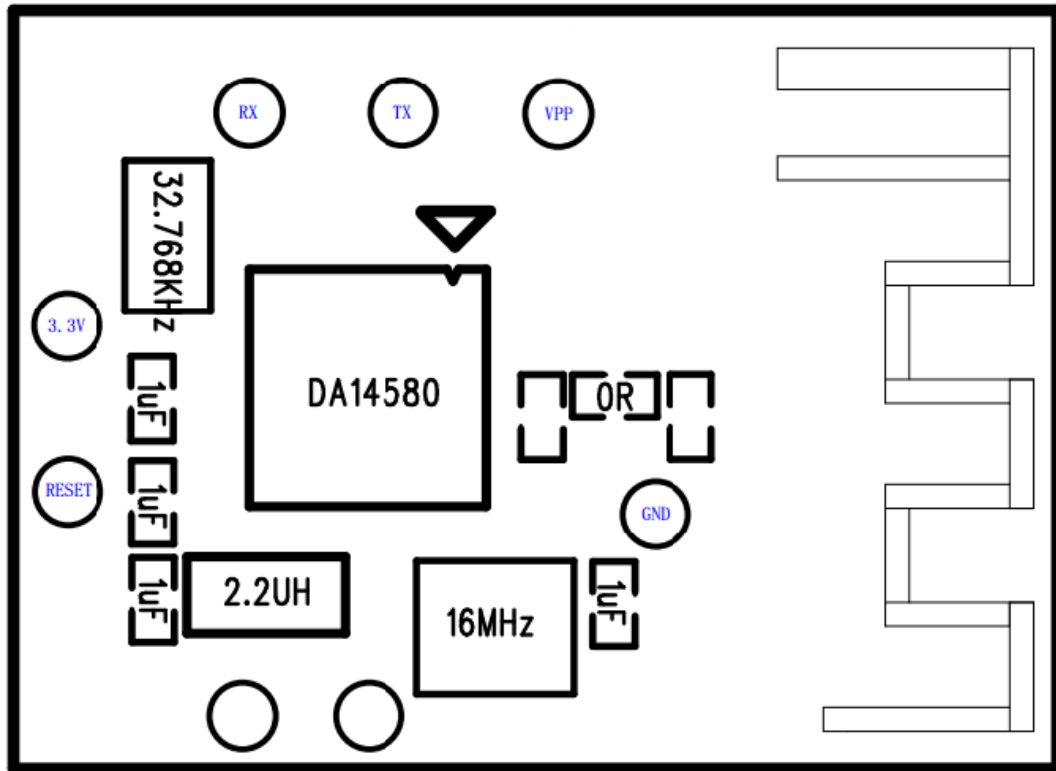
Beacon device uses advertising communication channel only. As what the word “beacon” literally means, such devices send data packets at a certain time interval, and the data transmitted can be obtained by those devices such as mobile phones. That is, iBeacon is only a simple application of BLE advertising mode, and provides the support for the user to edit the broadcasting contents on its basis.

When you get into the working range of the beacon, your application program will receive notifications, even when the application is in the background. Even if the application is not running it can also be awakened. The application then can send contents such as push messages, or the messages that prompt the user to open an application to view the promotion advertisements from business (and the advertisements can be obtained from the website), or other related contents.

Size



Foot position



Installation instructions

Insert the battery of correct type into the battery holder and the module will start to work. Pay attention to the battery polarity.

FCC Statement

This device complies with part 15 of the FCC Rules. Operation is subject to the following two conditions: (1) This device may not cause harmful interference, and (2) this device must accept any interference received, including interference that may cause undesired operation.

Changes or modifications not expressly approved by the party responsible for compliance could void the user's authority to operate the equipment.

FCC Radiation Exposure Statement

This modular complies with FCC RF radiation exposure limits set forth for an uncontrolled environment. This transmitter must not be co-located or operating in conjunction with any other antenna or transmitter.

If the FCC identification number is not visible when the module is installed inside another device, then the outside of the device into which the module is installed must also display a label referring to the enclosed module. This exterior label can use wording such as the following: "Contains Transmitter

Module FCC ID: 2AJOV-AW16AZ Or Contains FCC ID: 2AJOV-AW16AZ”

When the module is installed inside another device, the user manual of the host must contain below warning statements;

1. This device complies with Part 15 of the FCC Rules. Operation is subject to the following two conditions:

(1) This device may not cause harmful interference.

(2) This device must accept any interference received, including interference that may cause undesired operation.

2. Changes or modifications not expressly approved by the party responsible for compliance could void the user's authority to operate the equipment.

The devices must be installed and used in strict accordance with the manufacturer's instructions as described in the user documentation that comes with the product

Any company of the host device which install this modular with limit modular approval should perform the test of radiated emission

and spurious emission according to FCC part 15C : 15.247 and 15.209 requirement, Only if the test result comply with FCC part 15C : 15.247 and 15.209 requirement, then the host can be sold legally.