



User's Guide

SMART DETECTOR: SMOKE + CARBON MONOXIDE + AIR QUALITY

ATTENTION: Please read carefully and save in a safe place

For 1st Generation Model Z1A

Hi! We're Birdi

Thanks for inviting us into your home. We're here to help. In the 21st century you shouldn't worry about an emergency at home while you're away, be left in the dark about the quality of the air you're breathing or be bothered by false alarms and late-night beeps. Now there's a better way. We hope you find Birdi to be as smart and elegant as your home deserves. It's time to experience what home health and safety can be.

TABLE OF CONTENTS

WELCOME HOME.....	3
PLACEMENT.....	7
INSTALLATION.....	14
WARNINGS & ALARMS.....	18
TESTING.....	20
MAINTENANCE.....	21
HEALTH.....	24
SAFETY.....	26
EVACUATION PLAN.....	35
CERTIFICATIONS.....	38
LEGAL.....	40

Welcome Home



ENGINEERING MEETS ART

A sleek replacement for your smoke + CO alarm. A modern shape, warm stone finish, simple quiet button and colorful light ring unite into a refreshingly new experience.



FEWER FALSE ALARMS

Our unique broad-spectrum sensor is industry-certified to excel at detecting both fast + slow burning fires, reducing false alerts from burnt toast to steamy showers.



NEVER ANNOYING

Birdi doesn't wake you with chirps at 2AM. When the long-life AA batteries that power your Smart Detector run low, we'll simply help you get new ones through our app.



SIMPLE CONTROL

No hubs. Just link to Wi-Fi and each Birdi wirelessly interconnects to alert in every room. Sync with your smart home to lower energy bills, increase safety + control comfort.



ALWAYS CONNECTED

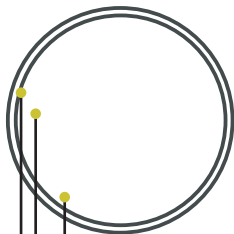
Quiet alarms right from your phone. And don't worry if you miss a notification. Birdi can dispatch the authorities with our Emergency Concierge Service.



PERSONALIZED TIPS

Birdi tracks what's happening indoors and outdoors to make you safer and healthier. Whether there's a tornado or sudden spike of dust, we'll let you know what you can do.

FRONT

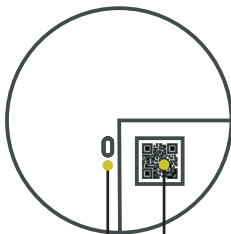


Siren alerts you with a loud sound in an emergency

Push the button to silence alarms, run tests and connect to Wi-Fi

Light ring changes colors to notify you of events

BACK



USB-C connector port

Battery compartment:
3 AA Energizer Ultimate
Lithium batteries (L91)

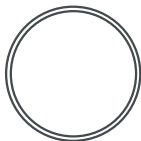
5.71"
14.5 cm



1.46"
3.7 cm

Welcome Home

INSIDE THE BOX



Smart Detector



Mounting Plate



4 Mounting Screws

SMART FEATURE REQUIREMENTS



Wi-Fi Network

802.11 b/g/n Router
at 2.4 GHz with Internet



Smartphone

iPhone & Android. Bluetooth
for real-time interaction

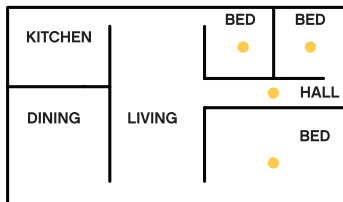
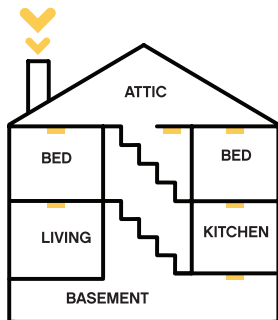


Birdi App

Free Birdi account with
valid email address

Placement

Recommended to place one Smart Detector on every floor + sleeping room. Please follow your local regulations.



CONFORMS TO
UL STDs 217 & 2034
CERTIFIED TO
STDs ULC S531-02 & CSA 6.19-01



Placement

BEFORE INSTALLING

A smoke and CO alarm monitors the air and when a problem reaches the sensor, it alarms, giving you time to escape before an emergency spreads. It only gives an early warning if it's installed, maintained and located properly. Have a plan in place to help everyone in the home escape quickly.

It's recommended to have a qualified technician install smoke / CO alarms and wiring, in accordance with articles 210 and 300.3B of the National Electrical Code ANSI, plus NFPA 70, 72 & 720. Check with your building codes and other codes in your jurisdiction to know what type you require and how to ensure this unit and it's installation is compliant to your regulations.

TWO WAYS TO POWER



Battery

Energizer Ultimate
Lithium AA (LR9)



Wired

Birdi Electrical Adapter

WHERE TO INSTALL

The National Fire Protection Association recommends installing combination Smoke and Carbon Monoxide Alarms in the following areas:

- Inside and outside of every sleeping area.

- On every level of your home, including finished attics and basements.

- If a hall outside a sleeping area is more than 40 feet / 12 meters long, install a unit at each end.

- At the top of first-to-second floor stairway.

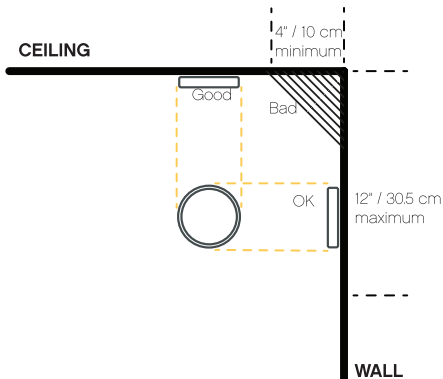
- At the bottom of basement stairway.

Mount with Birdi logo upright and “Do Not Paint” label positioned to be easily visible from the ground. In any location, make sure there’s no obstruction that could prevent smoke or carbon monoxide from reaching the Smart Detector.

Placement

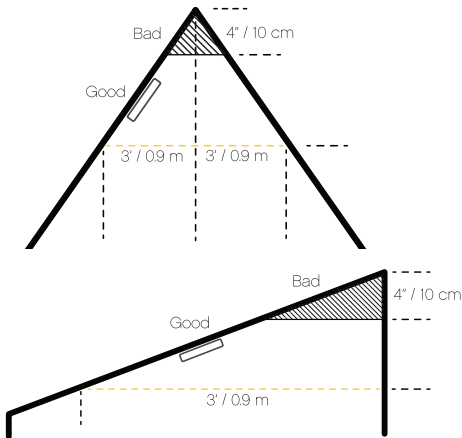
INSTALLING ON A PERPENDICULAR CEILING OR WALL

Ensure that the device is at least 4 inches / 10 cm from the link point of wall and ceiling. It is recommended to install on ceiling, but if mounted on wall, ensure it is not further than 12 inches / 30.5 cm from the link point to the furthest point of the device. Position so that “Do Not Paint” label is readily visible after the alarm is mounted.



INSTALLING ON A SLOPED CEILING

Ensure the device is between 4 inches to 3 feet / 10 cm to 0.9 m of the link point. Regulation NFPA 72 states: Smoke alarms in rooms with ceiling slopes greater than 1 foot in 8 feet / 0.3m in 2.4 m horizontally shall be located on the high side of the room.



WHERE NOT TO INSTALL

Do not install Smart Detectors in garages, crawl spaces, furnace rooms or unfinished attics.

Keep at least 5 feet / 1.5 meters away from a cooking appliance, furnace or fuel burning heat source. In smaller homes or in manufactured homes where this distance cannot be maintained, install the Alarm as far away from the source as possible.

Installing the Alarm closer will not damage the Alarm, but may increase the frequency of unwanted alarms.

Areas where the temperature can fall below 0°F / -17°C or rise above 110°F / 43°C. Extreme temperatures can change functionality of the device.

Ventilated areas: Don't install a smoke alarm near a window, door, or forced-air register where drafts could interfere with its operation. Moving air can blow smoke away from the sensor.

Dirty areas: insects, dust and dirt can clog the sensing chamber.

Lights: Less than 12" / 305 mm next to fluorescent lamps.

Moist places: Avoid installing smoke alarms near moist or occasionally moist places such as immediately close to a shower or kitchen, where steam can cause false alarms.

Stay current: Position and location vary according to local requirements. Always check with your Fire Marshall and building codes to adhere to the latest updates in life safety regulations.

INSTALLATION CODE

THIS EQUIPMENT SHOULD BE INSTALLED IN ACCORDANCE WITH THE NATIONAL FIRE PROTECTION ASSOCIATION'S STANDARD 72

For your information, the National Fire Alarm & Signaling Code, NFPA 72, reads as follows: 29.5.1 Required Detection. 29.5.1.1 Where required by applicable laws, codes, or standards for a specific type of occupancy, approved single- and multiple-station smoke alarms shall be installed as follows: (1) In all sleeping rooms + guest rooms (2) Outside of each separate dwelling unit sleeping area, within 21 ft (6.4 m) of any door to a sleeping room, with the distance measured along a path of travel (3) On every level of a dwelling unit, including basements (4) On every level of a residential board and care occupancy (small facility), including basements and excluding crawl spaces and unfinished attics (5)*In the living area(s) of a guest suite. (6) In the living area(s) of a residential board and care occupancy (small facility).

(Reprinted with permission from NFPA 72-2016, **National Fire Alarm and Signaling Code** Copyright ©2015, National Fire Protection Association, Quincy, MA. This reprinted material is not the complete and official position of the NFPA on the referenced subject, which is represented only by the standard in its entirety.)



WARNING This product is not designed to meet compliance with Occupational Safety and Health Administration (OSHA) commercial or industrial standards

Installation

SETUP HAS NEVER BEEN EASIER

Simply remove your old smoke and/or carbon monoxide alarm and replace it with Birdi. Review all local fire and electrical codes before installing or hire a qualified technician.



1. Get the Birdi App

Before you install your Birdi Smart Detector on the ceiling or wall, we recommend setting it up with the Birdi app. Simply download the free app and create an account. Just search for Birdi on the Apple App Store™ or Google Play™ to find us. Your Smart Detector will still work without it, but without some of the advanced features.



2. Set up your Birdi Smart Detector

The Birdi app will quickly guide you through the full set up process. Don't worry, it shouldn't take more than 5 minutes. Remove the battery tab to wake it up when instructed or if you plan to install without an app + internet connection.



3. Add more Birdi Smart Detectors

If you have more devices, add them before mounting any to the wall. Each subsequent setup will be even faster than the 1st one, taking around 2 minutes. Make sure to mark the location on each device to keep track of where each will be installed.



4. Test before installing

Setup through the app will automatically run digital tests on your device to make sure it's working. For additional safety, you should run a manual test by pressing the button twice to enter test mode. Once it glows green to indicate that it passed the tests, you're ready to install.



DANGER: ELECTRICAL SHOCK HAZARD

Failure to turn off the power may result in serious electrical shock, injury or death.

Installation



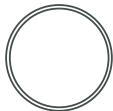
5. Replace your old smoke alarm

Twist and remove the old alarm. Unscrew the backplate and remove it from the ceiling. With wired units, to prevent an electrical shock, make sure the power is off on the existing alarm. Turn off power at the circuit breaker of fuse box. Power is indicated by the green power light. Use caution since your old alarm might make a really loud sound when you disconnect it.



6. Install the Birdi mounting plate

Screw the mounting plate to the wall or ceiling using the Birdi screws.



7. Mount Birdi & Test

Push the Birdi Smart Detector against the mounting plate and slightly twist clockwise until it clicks into place. You can run a manual test again to ensure everything is working properly.

WIRELESS INTERCONNECT

Devices can be wirelessly interconnected in the setup process using the Birdi app. After this happens, they will work as multi-station smoke/CO alarms so that in an emergency, when one alarms, they all alarm. In a false alarm, the device that was triggered must be quieted physically using the button or with the Birdi app from the room that it was triggered in. Devices can operate as a single and/or multiple station device (12 maximum). Interconnect does not work with smoke or CO alarms by other brands.



WARNING Interconnect range can vary depending on circumstance. Location, conditions and number of wireless devices can all impact functionality. Metal objects in particular, can cause interference. It is recommended to have devices within a 50 ft / 15 m range of one another. After installing, immediately test to ensure range and reliability. To increase range, add more Birdi devices

INSTALLATION RECOMMENDATION

California State Fire Marshal (CSFM) advises: "Early warning detection is best achieved by the installation of fire detection equipment in all rooms and areas of the household as follows: A Smoke Alarm installed in each separate sleeping area (in the vicinity, but outside bedrooms), and Heat or Smoke Alarms in the living rooms, dining rooms, bedrooms, kitchens, hallways, finished attics, furnace rooms, closets, utility and storage rooms, basements, and attached garages".

Warnings + Alarms

Birdi notifies by making specific sounds, flashing lights in a certain manner and broadcasting alarms through the Birdi app. Additional services are provided with the Birdi Security Concierge Service, which also broadcasts alerts through landline phones, directly to authorities and more.

BIRDI HAS 2 TYPES OF ALARMS

1. Warnings A gentle yellow pulse and a friendly app message lets you know that something may be wrong to help you fix a situation before it gets dangerous. This happens when we detect elevated levels of smoke or carbon monoxide.

2. Emergencies A rapid red flashing and app alert let's you know when smoke and/or carbon monoxide levels are at emergency levels. Note: the smoke alarm takes priority when carbon monoxide is also present.

Be advised: Recent studies have shown smoke alarms may not awaken all sleeping individuals. In the event of an emergency at night, please ensure everyone is awakened and assist anyone who may be incapable of safely evacuating the area unassisted.

SILENCING ALARMS

Alarms can be silenced with the button or via Birdi app. This must be done from originating device or within close proximity via app and only after you have checked conditions to verify the situation is safe. However, if the emergency levels we detect are too high, the alarm can't be silenced.

LIGHTS + SOUNDS



Smoke Detection

Warning: Pulsing yellow light & 1 chirp/min

Emergency: Flashing red light & 3 long beeps



Carbon Monoxide Detection

Emergency: Flashing red light & 4 rapid beeps



Quiet Indication

Pulsing yellow light



Setup & Manual Test

Pulsing blue light



Problem Indication

Low Battery: Flashing yellow light & 1 chirp/min

End-of-Life: Flashing yellow light & 2 rapid chirps/min

EMERGENCY CONCIERGE



Premium Service

27 / 7 emergency dispatch (optional with no contract)

Testing

Testing helps to make sure everything is functioning properly and is best practice according to international life safety certification standards.

SELF-TESTING: AUTOMATIC

Birdi tests itself constantly to make sure that everything is working properly. If there's a problem, we'll let you know by signaling the warning state or end-of-life state. We'll notify you about the specific issue by sending you a message through the Birdi app.

MANUAL CHECK: SINGLE PRESS

Press once to check the status. Green means the device is working. Blue means it is working and is also connected to the internet. Yellow indicates a problem.

MANUAL TESTING: DOUBLE PRESS

Press the button twice to start a test. After countdown beeps, the device will test the smoke alarm state by flashing red with 3 long beeps then test the carbon monoxide alarm by flashing red with 4 short beeps. Once the test ends, the device will glow green. If you do not hear or see any alerts during the test, please reset the device and try again. If this problem continues to persist, contact support.



WARNING Weekly testing is required. Never test the smoke sensor with an actual fire or with a cigarette. Never test the carbon monoxide sensor by using a car exhaust or with a real gas source

Properly maintaining your Birdi Smart Detector can help ensure a well-functioning device for the next 10 years.

CLEANING

The outside of the device can be cleaned using a damp towel. Do not use cleaning solvents. To clear the inside, use a vacuum or gently spray with compressed air. Do not use air fresheners or other aerosols as they can damage the sensors and do not get water inside as it can cause irreversible damage. For your protection, do not open the device as it can impact life safety functionality. If household cleaning supplies or other contaminants with VOCs are used, fully ventilate room for best performance. Do not paint.

RESETTING

Press the button and hold for about 30 seconds. Device will turn blue then turn red. Once it flashes red, let go. It will then turn off and reset. Once it has reset, the device will pulse green.

BATTERY FUNCTIONALITY

For any device employing a battery, constant exposure to high or low humidity may reduce battery life.

BATTERY LIFETIME

Your Smart Detector is certified to last at least 1-year and may last longer. Actual battery lifetime varies and depends on the environment where it is installed. If device is in low battery mode, you must replace the batteries.

REPLACING BATTERIES

Birdi does our best not to annoy you. We'll alert you through the app when your batteries start to get low. This will give you a chance to replace them before we start to broadcast the legally-required chirp.

To replace the 3 batteries, first dismount the device. Open the battery door. Make sure to only install the batteries indicated: AA Energizer® Ultimate Lithium (L91) long-lasting batteries. These can be ordered directly from us for your convenience, or found at your local store. They must be lined up in the proper orientation to function, as indicated by the label inside to match polarity: + to + and - to -. Insert the batteries in the order indicated by the label (first with #1, then #2, then #3).

Note The device cannot be installed on the mounting plate without the batteries inserted.



WARNING Do not use any other batteries than ones specified by Birdi. Different battery types can negatively impact functionality. Never remove batteries to silence an alarm. Please open a window or fan the air in case of a false alarm

TROUBLE

If the device shows a flashing yellow light with 1 chirp per minute, the device may have low batteries or other troubles. First refer to the Birdi App to see if what information the device may have sent. Second you can visit **support.birdihome.com** to troubleshoot. If none of these solutions work, please return to Birdi for servicing.

END-OF-LIFE

If the device shows a flashing yellow light with 2 rapid chirps every 60 seconds, the device has reached end-of-life. Please discontinue use and replace your Smart Detector.

Note: The expiration date for the device is 10-years from the date of production, due to the electrochemical composition of the Carbon Monoxide sensor. After the device expires, it will automatically enter end-of-life mode.

SERVICING

If you need help at any time, please visit **support.birdihome.com**. If your device needs servicing, get a return number from the support team and send to:

Birdi
Returns Department (#)
1479 Folsom Street
San Francisco, CA, 94103 USA

Health

Birdi is packed with sensors to keep you and your loved ones healthy and happy. We compare conditions indoors and outdoors and provide helpful personalized insights and tips so you can always have the best air and highest level of comfort.



TEMPERATURE

Your home climate is important for your comfort, safety and the cost of your utility bills. We provide real-time information, as well as notifications if it gets too hot or cold or if we identify sudden drops or spikes that could indicate additional dangers or damage.



HUMIDITY

Measuring the amount of water vapor in the air is an important indicator of how well you'll breathe & sleep as well as a factor in the structural integrity of your home. We'll notify you when conditions are outside of pleasant levels and at times when prolonged conditions could be causing problems, like when mold may be developing.



AMBIENT LIGHT

Lighting impacts your mood, sleep and affects the overall climate and conditions in your home. Tracking can help in many ways from reducing your utility costs to helping you have more restful nights.



STALE AIR

Carbon dioxide CO₂ (not to be confused by carbon monoxide, the extremely deadly gas that we also monitor for) is produced by almost all living things, especially us humans. When exposure builds up, it can affect your concentration, energy levels and can cause headaches. It can also indicate of other harmful issues, such as the buildup of toxic Volatile Organic Compound (VOC) fumes. These are produced by paint furniture, and household chemicals like cleaning supplies. Our unique sensor technology provides insights, throughout the day and while you're sleeping to help keep your air the freshest possible.



PARTICULATE MATTER

Birdi's unique sensor technology goes beyond basic air quality sensing, calibrated to track the amounts of specific contaminants in the air at your location in the world.

Cigarette Smoke Is someone smoking in your home who shouldn't be? We'll let you know.

Cooking Odors That exhaust fan isn't only for smoke. Those particles can be a health-hazard. We'll let you know if they are.

Fine Dust Particles PM_{2.5} This type of dust can be extremely dangerous, causing conditions including asthma, acute respiratory infections, lung cancer, cardiovascular disease, respiratory diseases, premature delivery, birth defects, and even premature death.

Safety

At Birdi, safety is our priority. Our systems and sensors are constantly learning to provide you with the fewest false alarms and fastest response times from first responders. After all, especially in an emergency, you and your loved ones deserve nothing but the best.



APP ALERTS + ALARM QUIETING

You can now track emergencies at home from anywhere in the world on the Birdi app. Whether there's an alarm or low batteries, we can alert you and help prevent the dreaded chirping. You can even quiet false alarms easily, right from your phone.



PRECISION SMOKE SENSOR

Our wide-spectrum sensor uses two wavelengths of light to quickly detect both flaming + smoldering fires, while minimizing false alarms. Better tracking in both fast and slow burning fires is key to keeping you safe no matter what type of flames.



WEATHER EMERGENCY ALERTS

Extreme weather strikes suddenly. We alert you as fast as possible to prepare your family, pets and property.



CIGARETTE + STEAM DETECTION

Stop worrying about hidden dangers to pipes or in attics. We can even save you money by integrating with smart homes + utility companies.



HEAT + FREEZE WARNINGS

Stop worrying about hidden dangers to pipes or in attics. We can even save you money by integrating with smart homes + utility companies.



ADVANCED CARBON MONOXIDE TRACKING

In large amounts, carbon monoxide (CO) is the silent killer. Even before an emergency, Birdi warns about low-levels of exposure that can cause health problems. Our sensor lasts the legal maximum of 10 years.



LAYERED DATA SECURITY

Birdi provides advanced security with end-to-end encryption and authentication between our systems and devices. Layers of access ensure further protection. The personal information you want kept private is safe with us.

LIMITATIONS OF SMOKE + CO ALARMS

SMOKE ALARMS MAY NOT WAKEN ALL INDIVIDUALS Create an escape plan and practice fire drills with the whole family.

SMOKE ALARMS CANNOT WORK WITHOUT POWER Units cannot work if the batteries are missing, dead or disconnected and if there is no wired connection.

UNITS CANNOT DETECT IF SMOKE/CO DOES NOT REACH THE ALARMS Units will only detect smoke or CO at the sensor, even if smoke and/or CO is present in other areas. Doors and other obstructions may affect the rate that smoke and/or CO reaches the sensors.

MOBILE NOTIFICATIONS Our devices can notify you anywhere in the world, not just when you're home. But these virtual alerts are only as reliable as your home Wi-Fi connection. If there is no internet connection, alerts will only occur from the device and not be broadcast to the Birdi app.

ACUTE SENSITIVITY This carbon monoxide alarm is designed to detect carbon monoxide gas from ANY source of combustion. While this device is designed to protect individuals from the acute effects of carbon monoxide exposure. It will not fully safeguard individuals with specific medical conditions. If in doubt consult a medical practitioner.

PROPER MAINTENANCE OF APPLIANCES Installation of this device should not be used as a substitute for proper installation, use, and maintenance of fuel-burning appliances, including ventilation and exhaust systems.

EXTREME CONDITIONS Device can fail in conditions such as excessive dust.

RESIDENTIAL USE This device is specifically designed for residential use and may not be adequate in non-residential applications.

WHAT TO DO IN A FIRE

Smoke Detection

Our smoke sensors were redesigned from the ground up to be the best on the market. The result is a broad-spectrum sensor that is the industry leader in detecting both fast-burning and smoldering fires.

WARNING: There are certain situations where a smoke alarm may not be effective. For example:

- 1. Fires where a person is intimate** with the flaming, such as when a person's clothes catch fire while cooking.
- 2. Fires where the smoke is blocked** from reaching the detector due to a closed door or other obstruction.
- 3. Incendiary fires where the fire grows** so rapidly that an occupant's escape is blocked even with properly located detectors.
- 4. Fires caused by smoking cigarettes in bed** (seriously, you should never do that).

WHAT IS CARBON MONOXIDE

Carbon Monoxide (CO) is the silent killer. CO is an invisible, odorless, tasteless gas and it can be deadly. CO is produced when fossil fuels do not burn completely or are exposed to heat. Sources can include natural gas, gasoline, kerosene, propane, oil, wood, coal, and charcoal. Common sources of CO include appliances like oil or gas burning furnaces, gas ovens, charcoal grills and wood-burning fireplaces. Without proper maintenance or ventilation or in a malfunction, CO levels can rise quickly. Particularly in energy efficient homes that are “air-tight”, this can be a real danger by “trapping” CO inside.

CARBON MONOXIDE DETECTION

Unlike most carbon monoxide alarms, we provide insights from low level leaks to maximize protection for people especially at risk, including children and the elderly.



WARNING This alarm will only indicate the presence of carbon monoxide gas at the sensor. Carbon monoxide gas may be present in other areas.

The following symptoms are related to CARBON MONOXIDE POISONING and are to be discussed with ALL members of the household:

Mild exposure Slight headache, nausea, vomiting, fatigue (often described as flu-like symptoms).

Medium exposure Severe throbbing headache, drowsiness, confusion, fast heart rate.

Extreme exposure Unconsciousness, convulsions, cardiorespiratory failure, brain damage, death.

Many cases of reported CARBON MONOXIDE POISONING indicate that while victims are aware they are not well, they become so disoriented they are unable to save themselves by either exiting the building or calling for assistance. Young children and household pets are typically the first affected.



WARNING This product is intended for use in ordinary indoor locations of family living units. It is not designed to measure compliance with Occupational Safety and Health Administration (OSHA) commercial or industrial standards.

POTENTIAL CAUSES OF CARBON MONOXIDE SITUATIONS

Excessive spillage or reverse venting of fuel burning appliances caused by:

Wind direction and/or velocity, including high gusts of wind. Heavy air in vent pipes (cold/humid air with extended periods between cycles).

Negative pressure differential resulting from the use of exhaust fans.

Simultaneous operation of several fuel burning appliances competing for limited fresh air.

Vent pipe connection vibrating loose from clothes dryers, furnaces, or water heaters.

Obstructions in or unconventional vent pipe designs which amplify the above situations.

Extended operation of unvented fuel burning devices (range, oven, fireplace, etc.)

Temperature inversions which can trap exhaust close to the ground.

Car idling in an open or closed attached garage, or near a home.

Appliances that should NEVER operate inside, such as a charcoal grill or portable generator.

WHAT TO DO IN A CARBON MONOXIDE EMERGENCY

WARNING: Actuation of your CO alarm indicates the presence of carbon monoxide (CO) which can KILL YOU. If alarm signal sounds:

1. Operate reset/silence button;
2. Call your emergency services [fire department or 911];

TelephoneNumber:_____

3. Immediately move to fresh air – outdoors or by an open door/window. Do a head count to check that all persons are accounted for. Do not reenter the premises nor move away from the open door/window until the emergency services responders have arrived, the premises have been aired out, and your alarm remains in its normal condition.

4. After following steps 1 – 3, if your alarm reactivates within a 24 hour period, repeat steps 1 – 3 and call a qualified appliance technician

TelephoneNumber:_____

to investigate for sources of CO from fuel burning equipment and appliances, and inspect for proper operation of this equipment. If problems are identified during this inspection have the equipment serviced immediately. Note any combustion equipment not inspected by the technician and consult the manufacturers' instructions, or contact the manufacturers directly, for more information about CO safety and this equipment. Make sure that motor vehicles are not, and have not been, operating in an attached garage or adjacent to the residence.

BATTERY SAFETY

Recommended batteries are Energizer Ultimate Lithium L91 AA, using the chemical system Lithium-Iron Disulfide. They are not designed for recharge. Battery should not be opened or burned. Exposure to the ingredients contained within or their combustion products could be harmful. Dispose in accordance with all applicable federal, state and local regulations. Battery contains Perchlorate Material – special handling may apply. For more information visit dtsc.ca.gov/hazardouswaste/perchlorate

WHAT TO DO WITH BATTERIES IF EXPOSED TO A FIRE

In case of fire where lithium batteries are present, apply a smothering agent such as METL-X, sand, dry ground dolomite, or soda ash, or flood the area with water. A smothering agent will extinguish burning lithium batteries. Water may not extinguish burning batteries but will cool the adjacent batteries and control the spread of fire. Burning batteries will burn themselves out. Virtually all fires involving lithium batteries can be controlled with water. When water is used, however, hydrogen gas may evolve. In a confined space, hydrogen gas can form an explosive mixture. In this situation, smothering agents are recommended.

Fire fighters should wear self-contained breathing apparatus. Burning lithium-iron disulfide batteries produce hydrogen sulfide gas, sulfur dioxide gas, toxic and corrosive lithium hydroxide fumes.



WARNING (1) keep away from small children. If swallowed, promptly see doctor; have doctor phone (202) 625-3333 collect. (2) Fire, explosion, burn hazard. Do not open battery, dispose of in fire, heat above 212°F / 100°C, expose contents to water, recharge, put in backwards, mix with used or other battery types-may explode or leak + cause personal injury

EVACUATION PLAN

Your ability to get out of your home safely in an emergency depends on advance warning from smoke alarms and advance planning.

Pull together everyone in your household and make a plan. Walk through your home and inspect all possible exits and escape routes. Households with children should consider drawing a floor plan of your home, marking two ways out of each room, including windows and doors. Also, mark the location of each smoke alarm.

BASIC FIRE ESCAPE PLANNING

Draw a map of your home. Show all doors and windows. Visit each room. Find two ways out.

All windows and doors should open easily. You should be able to use them to get outside.

Make sure your home has smoke alarms. Push the test button to make sure each alarm is working.

Pick a meeting place outside. It should be in front of your home. Everyone should meet at the meeting place.

Make sure your house or building number can be seen from the street. Talk about your plan with everyone in your home.

Learn the emergency phone number for your fire department and enter it into the app and directly into your mobile phone's address book for easy backup access. Practice your home fire escape drill.

If there are infants, older adults, or family members with mobility limitations, make sure that someone is assigned to assist them in the fire drill and in the event of an emergency.

Evacuation Plan

PUTTING YOUR PLAN TO THE TEST

Practice your home fire escape plan twice a year, making the drill as realistic as possible.

Allow children to master fire escape planning and practice before holding a fire drill at night when they are sleeping. The objective is to practice, not to frighten, so telling children there will be a drill before they go to bed can be as effective as a surprise drill.

It's important to determine during the drill whether children and others can readily waken to the sound of the smoke alarm. If they fail to awaken, make sure that someone is assigned to wake them up as part of the drill and in a real emergency situation.

If your home has two floors, every family member (including children) must be able to escape from the second floor rooms. Escape ladders can be placed in or near windows to provide an additional escape route. Review the manufacturer's instructions carefully so you'll be able to use a safety ladder in an emergency. Practice setting up the ladder from a first floor window to make sure you can do it correctly and quickly. Children should only practice with a grown-up, and only from a first-story window. Store the ladder near the window, in an easily accessible location. You don't want to have to search for it during a fire. Always choose the escape route that is safest – the one with the least amount of smoke and heat – but be prepared to escape under toxic smoke if necessary. When you do your fire drill, everyone in the family should practice getting low and going under the smoke to your exit. Closing doors on your way out slows the spread of fire, giving you more time to safely escape.

In some cases, smoke or fire may prevent you from exiting your home or apartment building. To prepare for an emergency like this, practice

“sealing yourself in for safety” as part of your home fire escape plan. Close all doors between you & the fire. Use duct tape or towels to seal the door cracks and cover air vents to keep smoke from coming in. If possible, open your windows at the top and bottom so fresh air can get in. Call the fire department to report your exact location. Wave a flashlight or light-colored cloth at the window to let the fire department know where you are located.

EMERGENCY TELEPHONE NUMBER

NEAREST HOSPITAL OR MEDICAL CENTER

FIRST AID KIT LOCATION

FIRE EXTINGUISHER LOCATION

EMERGENCY EXIT INSTRUCTIONS

Certifications

FEDERAL COMMUNICATIONS COMMISSION (FCC) COMPLIANCE

This equipment has been tested and found to comply with the limits for a Class B digital device, pursuant to part 15 of the FCC Rules. These limits are designed to provide reasonable protection against harmful interference in a residential installation. This equipment generates, uses and can radiate radio frequency energy and, if not installed and used in accordance with the instructions, may cause harmful interference to radio communications. However, there is no guarantee that interference will not occur in a particular installation. If this equipment does cause harmful interference to radio or television reception, which can be determined by turning the equipment off and on, the user is encouraged to try to correct the interference by one or more of the following measures:

- Reorient or relocate the receiving antenna.
- Increase the separation between the equipment and receiver
- Connect the equipment into an outlet on a circuit different from that to which the receiver is connected
- Consult the dealer or an experienced radio/TV technician for help.

This device complies with part 15 of FCC rules. Operation is subject to the following two conditions:

1. This device may not cause harmful interference.
2. This device must accept any interference received, including interference that may cause undesired operation.

RF EXPOSURE INFORMATION

This equipment complies with FCC radiation exposure limits set forth for an uncontrolled environment. In order to avoid the possibility of exceeding the FCC radio frequency exposure limits, human proximity to the antenna shall not be less than 20cm during normal operation.

INDUSTRY CANADA (IC) COMPLIANCE

English This device complies with Industry Canada License-exempt RSS standard(s). Operation is subject to the following two conditions: (1) this device may not cause interference, and (2) this device must accept any interference, including interference that may cause undesired operation of the device.

Under Industry Canada regulations, this radio transmitter may only operate using an antenna of a type and maximum (or lesser) gain approved for the transmitter by Industry Canada. To reduce potential radio interference to other users, the antenna type and its gain should be so chosen that the equivalent isotropically radiated power (e.i.r.p.) is not more than that necessary for successful communication.

French Le présent appareil est conforme aux CNR d'Industrie Canada applicables aux appareils radio exempts de licence. L'exploitation est autorisée aux deux conditions suivantes: (1) l'appareil ne doit pas produire de brouillage, et (2) l'utilisateur de l'appareil doit accepter tout brouillage radioélectrique subi, même si le brouillage est susceptible d'en compromettre le fonctionnement.

Conformément à la réglementation d'Industrie Canada, le présent émetteur radio peut fonctionner avec une antenne d'un type et d'un gain maximal (ou inférieur) approuvé pour l'émetteur par Industrie Canada. Dans le but de réduire les risques de brouillage radioélectrique à l'intention des autres utilisateurs, il faut choisir le type d'antenne et son gain de sorte que la puissance isotrope rayonnée équivalente (p.i.r.e.) ne dépasse pas l'intensité nécessaire à l'établissement d'une communication satisfaisante.

WARRANTY

BY USING YOUR BIRDI SMART DETECTOR PRODUCT YOU ARE AGREEING TO BE BOUND BY THE TERMS OF THE BIRDI ONE (1) YEAR LIMITED WARRANTY ("WARRANTY") AS SET OUT BELOW. DO NOT USE YOUR PRODUCT UNTIL YOU HAVE READ THE TERMS OF THE WARRANTY. IF YOU DO NOT AGREE TO THE TERMS OF THE WARRANTY, DO NOT USE THE PRODUCT AND RETURN IT WITHIN THE RETURN PERIOD AND IN ACCORDANCE WITH BIRDI'S RETURN POLICY.

THIS LIMITED WARRANTY GIVES YOU SPECIFIC LEGAL RIGHTS. YOU MAY ALSO HAVE OTHER LEGAL RIGHTS THAT VARY BY STATE, COUNTRY, OR PROVINCE. THE DISCLAIMERS, EXCLUSIONS, AND LIMITATIONS OF LIABILITY UNDER THIS LIMITED WARRANTY WILL NOT APPLY TO THE EXTENT PROHIBITED BY APPLICABLE LAW. FOR A FULL DESCRIPTION OF YOUR LEGAL RIGHTS YOU SHOULD REFER TO THE LAWS APPLICABLE IN YOUR STATE, COUNTRY, OR PROVINCE.

Birdi's warranty obligations for this hardware product are limited to the terms set forth below:

CNRY, Inc. ("Birdi") warrants this Birdi home security hardware product and accessories contained in the original packaging against defects in materials and workmanship when used normally in accordance with Birdi's technical specifications and user manual for a period of ONE (1) YEAR from the date of original retail purchase by the end-user or purchaser ("Warranty Period"). If during this warranty period a defect arises and you submit a valid claim to Birdi and follow the instructions for returning the product, we will, at our option, either (i) repair the product using either new or refurbished parts, (ii) replace the product with a new or refurbished product, or (iii) refund the purchase price of the product. A replacement product assumes the remaining warranty period of the original product or ninety (90) days from the date of replacement or repair, whichever provides longer coverage for you. When a product is exchanged, any replacement item becomes your property and the replaced item becomes Birdi's property. When a refund is given, the product for which the refund is provided must be returned to Birdi and becomes Birdi's property.

To obtain warranty service for any product that is subject to the foregoing warranty, the consumer must notify Birdi to obtain a Return Material Authorization ("RMA") and return the defective product together with proof of purchase to the address specified by Birdi in connection with the RMA. This Limited Warranty applies only to hardware products manufactured by or for Birdi that can be identified by the "Birdi" trade name, or logo affixed to them. This warranty does not apply: (i) to consumable parts, such as batteries, unless failure has occurred due to a defect in materials or workmanship of the Birdi product itself; (ii) to cosmetic damage, including but not limited to scratches, dents and broken plastic on ports; (iii) defects or damage caused by misuse, accident (including, without limitation, collision, fire and the spillage of food or liquid), neglect, abuse, alteration, unusual stress, modification, improper or unauthorized repair, installation, testing, or improper storage; (iv) to damage caused by operating the product outside the permitted or intended uses described

by Birdi; (v) to damage caused by use with non-Birdi products. This Limited Warranty does not apply to any software, even if packaged or sold with Birdi hardware. Birdi does not warrant that the operation of the product will be uninterrupted or error-free.

Birdi will use reasonable commercial efforts to deliver the products as described. Birdi is not responsible for damage arising from failure to follow instructions relating to the product's use.

IP

© CNRY, Inc. All rights reserved. Birdi is a trademark of CNRY Inc. Apple and the Apple logo are trademarks of Apple Inc., registered in the U.S. and other countries. Please note that use of this accessory with iPhone may affect wireless performance. Google Play and the Google Play logo are trademarks of Google Inc. The Bluetooth® word mark and logos are registered trademarks owned by Bluetooth SIG Inc. registered in the U.S. and other countries. Wi-Fi® is a registered trademark of the Wi-Fi Alliance. National Fire Alarm & Signaling Code® and NFPA 72® are registered trademarks of the National Fire Protection Association, Inc. All other trademarks belong to their respective owners. More at birdihome.com/legal



birdi

CNRY, INC © 2016
1479 Folsom Street
San Francisco, California 94103 USA
www.birdihome.com

FCC Caution:

Any Changes or modifications not expressly approved by the party responsible for compliance could void the user's authority to operate the equipment.

This device complies with part 15 of the FCC Rules. Operation is subject to the following two conditions: (1) This device may not cause harmful interference, and (2) this device must accept any interference received, including interference that may cause undesired operation.

This equipment complies with FCC radiation exposure limits set forth for an uncontrolled environment .This equipment should be installed and operated with minimum distance 20cm between the radiator& your body.