

## Congratulations on your purchase !! 4ft Bluetooth KD Marching Drummer Nutcracker User Manual



### Safety Instructions:

Read and follow all instructions carefully before using the product and retain for future reference.

1. This product is not intended for permanent installation or use.
2. Do not mount or place near gas or electric heaters, fireplace, candles or other similar sources of heat.
3. Do not secure product wiring with staples or nails or place on sharp hooks.
4. Unplug the product when leaving the house, when retiring for the night, or if left unattended.
5. This is an electric product, not to be played with or placed where small children can reach.
6. Do not hang ornaments or other objects on the product or cord.
7. Before using or reusing, inspect the product carefully. Discard any products that have cuts, damages or frayed wire insulation cord, cracks, loose connections or exposed copper wire.

## IMPORTANT SAFETY INSTRUCTIONS

When using electrical products, basic precautions should always be practiced including the following:

1. READ AND FOLLOW ALL SAFETY INSTRUCTIONS.”
2. Read and follow all instructions that are on the product or provided with the product.
3. Do not use an extension cord.
4. Reference the National Electrical Code, ANSI/NFPA 70, specifically for the installation of wiring and clearances from power and lighting conductors.
5. Do not install or use within 10 feet of a pool.
6. Do not use in a bathroom.
7. WARNING: Risk of Electric Shock. When used outdoors, install only to a covered Class A GFCI protected receptacle that is weatherproof with the power unit connected to the receptacle. If one is not provided, contact a qualified electrician for proper installation. Ensure that the power unit and cord do not interfere with completely closing the receptacle cover.
8. WARNING: Risk of Electric Shock. Mount the unit at a height greater than 1 foot from the ground surface.
9. SAVE THESE INSTRUCTIONS – This manual contains important safety and operating instructions for power units.

# KD Assembly Instructions:

Open the carton and take out all the product components from the packing.

Components in the box:

1. 1 PC Polyethylene Soldier Nutcracker Head



2. 1 PC Magnesium Body with Arms



3. 2 PCS boots



4. 1 PC Center Pole with stabilizer Cap  
(Packed in outer Polyform)



5. 1 PC Base



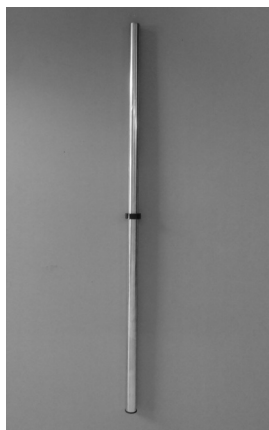
6. 1 PC UL listed Adaptor



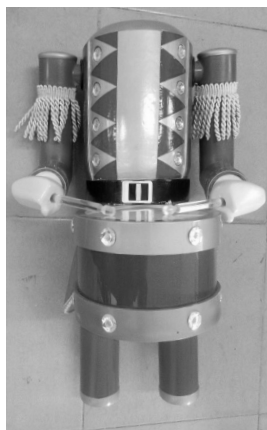
7. 1 PC Instruction sheet



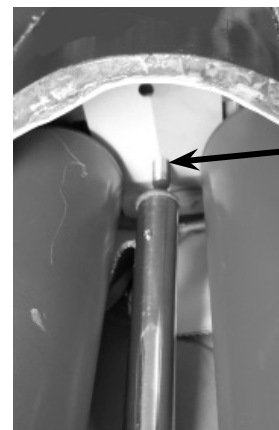
Follow the pictures to assemble each component together.



1. Center Pole with stabilizer  
Cap(4) (Packed in outer Polyform)



2. Magnesium Body(2)



Screw

3. Screw the Center Pole(4) to  
the end of the body(2)



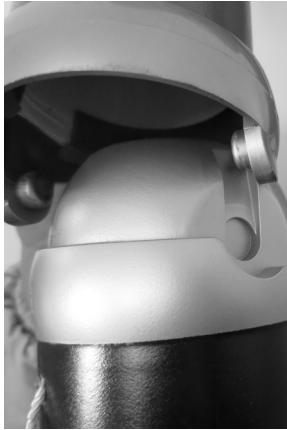
4. The Base(6)



5. Insert Center Pole(4)  
on the Base(5)



6. The Boots(3) (Left and  
Right boots are same)



7. Insert the boots(3) on the body(2)



8. Soldier Nutcracker Head(1)



9. Insert the Head(1) on the Body(2)



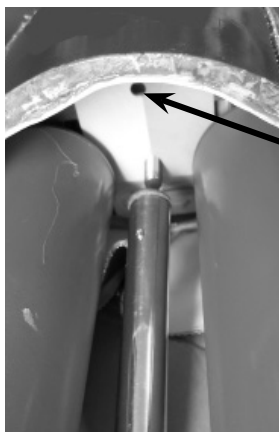
10. Finished Product.

## Functions:

1. Connection the adaptor to the power supply. Figure 1.
2. Press the ON/OFF Button, starts turning head, drumming, marching and hat's LED lights, drumstick lights and drum side light comes on. (Motion, LED and lights are always on until ON/OFF button is pressed off.)
3. Press the MODE Button and hold 3sec. to turn on Bluetooth. Press the MODE Button and hold 3sec again turn off Bluetooth. (To connect the device with Nutcracker, go to "Bluetooth Connection Instructions")
4. After Bluetooth is on, press MODE button(Not Hold) again changes to USB mode. Press the MODE Button(Not Hold) again changes to Bluetooth mode. (To connect the USB drive with Nutcracker, go to "USB Mode Instructions")
5. Press again back to Bluetooth mode.
6. When the Nutcracker plays music (Bluetooth or USB mode), the body's LED lights, drumhead light and drum edge LED lights will flash following music.
7. When music stops or pauses the body's LED lights, drumhead light and drum edge LED lights will go "OFF".

Figure 1.

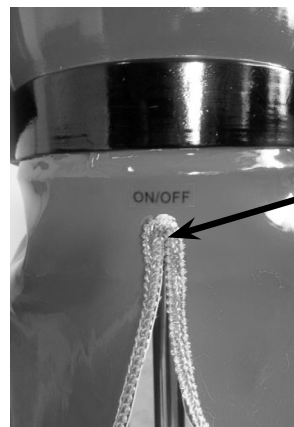
Adaptor connection port



Power Jack

Figure 1.

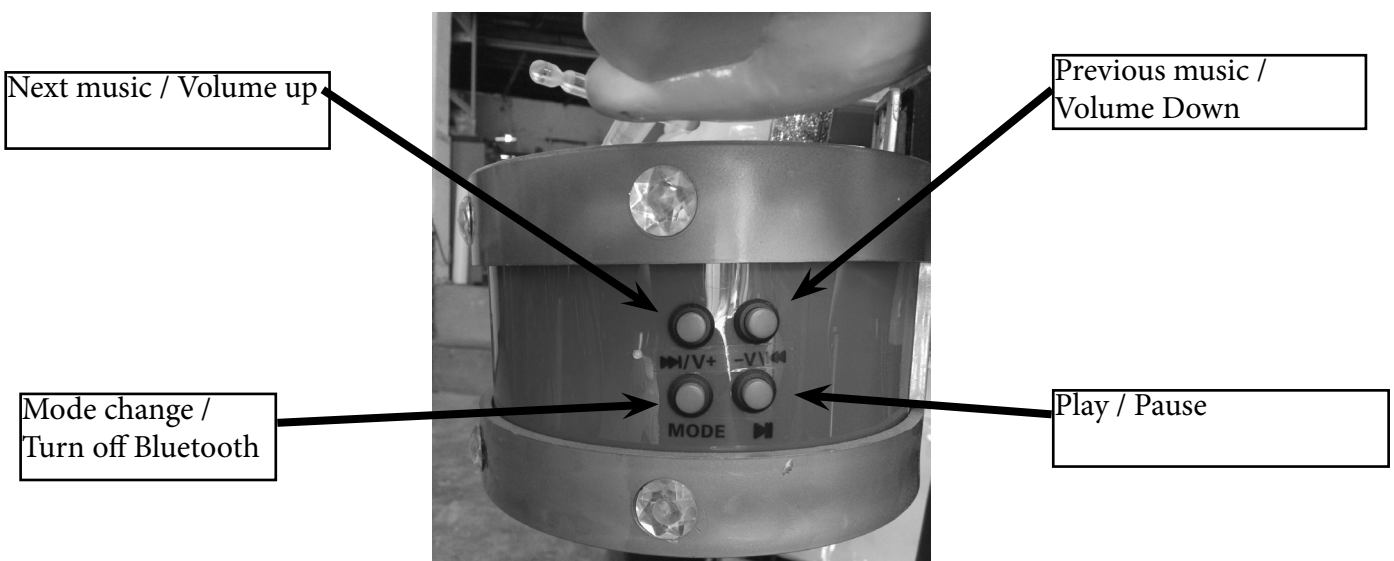
ON/OFF Button



ON/OFF Button

Figure 3.

Control Button on the Left side of Drum



# Bluetooth Connection Instructions

## Power Bluetooth On

Make sure both devices you want to connect have the Bluetooth function turned on. In the case of cell phones, laptop or computer, the Bluetooth function typically defaults to being powered off to conserve battery power in the device.

## Pair Devices

1. The Bluetooth Search function is typically located within a special Bluetooth menu in the options settings in the phone, laptop or computer.
2. Turn on Bluetooth and press "Search devices". Once your device finds the "T-2016" device name, then press the "T-2016" for the devices to link the two together.
3. When connected, the Nutcracker will repeat the words "Paired". Then go to the cell phone, laptop or computer's music player and play the music you choose. The Nutcracker will begin to play your devices music.
4. The Volume is controlled by the cell phone, laptop or computer.

# USB Mode Instructions

1. Insert the USB drive to the Nutcracker.
2. Press the Play / Pause button once to play music. Press again to Pause.
3. Press the Next music / Volume up button once to Next music
4. Press the Previous music / Volume Down button once to Previous music
5. Press and hold the Next music / Volume up or Previous music / Volume Down button to control the volume.

## CAUTION:

This is NOT a Toy. This is a Christmas Animated display figure. Disconnect the plug when the unit is not under supervision of an adult.

## Specification of Adaptor:

AC/AC Adaptor

MODEL: MAS-01201670



Input: 120VAC 60Hz

Output: 12VAC 1000mA 12VA

CUL Certificate number : E115626 71Z4

Efficiency Level: IV 115VAC



AC/AC ADAPTER		
CLASS 2 POWER UNITS		
MODEL NO: MAS-01201670		LISTED
INPUT:120VAC 60HZ		E115626
OUTPUT: 12VAC 1000mA 12VA		71Z4
EFFICIENCY LEVEL 	115VAC	0515
WARNING: Risk Of Electric Shock . Mount the unit at a height greater than 1 foot from the ground surface		Raintight
		MADE IN CHINA

# Care and Maintenance

1. It is recommended to not operate your Marching Drummer Nutcracker for more than 8 hours per day.  
Operating this figure for longer periods of time can place the motor under stress and shorten the life of the functions.
2. After use, store in a dry and clean area.
3. Clean with a semi dry towel.
4. Do not use any chemicals or detergents to clean.

Please contact one of our Product Specialists for assembly assistance or questions at TOLL FREE NUMBER :  
1 - (888) 529-6524

MADE IN CHINA

Page. 5

Warning: Changes or modifications to this unit not expressly approved by the party responsible for compliance could void the user's authority to operate the equipment.

NOTE: This equipment has been tested and found to comply with the limits for a Class B digital device, pursuant to Part 15 of the FCC Rules. These limits are designed to provide reasonable protection against harmful interference in a residential installation. This equipment generates, uses and can radiate radio frequency energy and, if not installed and used in accordance with the instructions, may cause harmful interference to radio communications.

However, there is no guarantee that interference will not occur in a particular installation. If this equipment does cause harmful interference to radio or television reception, which can be determined by turning the equipment off and on, the user is encouraged to try to correct the interference by one or more of the following measures:

- ☐ Reorient or relocate the receiving antenna.
- ☐ Increase the separation between the equipment and receiver.
- ☐ Connect the equipment into an outlet on a circuit different from that to which the receiver is connected.
- ☐ Consult the dealer or an experienced radio/TV technician for help.

This device complies with Part 15 of the FCC Rules. Operation is subject to the following two conditions : (1) this device may not cause harmful interference, and (2) this device must accept any interference received, including interference that may cause undesired operation.

The device must not be co-located or operating in conjunction with any other antenna or transmitter. This device complies with FCC's radiation exposure limits set forth for an uncontrolled environment

In case of any questions you can contact Our customer service number: 1-800-321-1484.

"This device must be installed to provide a separation distance of at least 20 cm from all persons."

Made In China