

Thank you for purchasing this Glue Smart lock (GL04X.CX) and Glue Wi-Fi Hub (GL01X.CX)

Handling Guidelines

- You should only use your Glue Smart Lock in conjunction with the Glue Wi-Fi Hub – this ensures that the Glue Smart Lock will perform as designed, with maximum security and functionality.
- It is your responsibility to ensure that unauthorised persons do not have access to your account with Glue. We strongly recommend all Glue Smart Lock users to use PIN code protection with all mobile devices on which the Glue application is installed.
- Please retain all instructions, packaging and installation tools.
- Before using the Device(s), familiarize all users with how the Device(s) and our services work and make sure that all users have read and understand our Terms of Purchase, Terms of Use and Privacy Policy. If you have any questions, please do not hesitate to contact the Glue team through our website at www.gluehome.com/support
- The Device(s) and our services are most effective and will perform as designed, if your home Wi-Fi network is functioning. If your home Wi-Fi network is not functioning, the Glue Smart Lock will function via Blue tooth communication only when the user's phone is within a range of 3 metres.
- The Glue Wi-Fi Hub should be placed in a location where it is able to have unimpeded communication with the Glue Smart Lock.
- The Glue Wi-Fi Hub should be located no less than 1 metre and no greater than 5 metres from the Glue Smart lock.
- Utilise your Glue Smart Lock in accordance with recommendations set out for physical key usage by your household insurer.
- Wipe the Glue Smart Lock with a soft damp cloth to clean. To clean the Glue Wi-Fi Hub, remove from the power socket and wipe body only with a soft DRY cloth.

Battery Handling

- Ensure that the battery replacement warnings on the app are adhered to as instructed.
- Batteries are to be installed as instructed – take care not to put the batteries in to the product in the wrong orientation. The + and – icons on the battery should be orientated in accordance with the + and – icons in the base of the battery housing.
- When inserting the batteries, it is easiest to insert the negative (-) end first.
- Only standard 1.5V AA batteries should be used with the Glue Smart Lock, rechargeable batteries are not suitable for use.
- When replacing the batteries, ensure that the ribbon is correctly placed underneath the batteries with the end of the ribbon exposed – to enable you to remove the batteries with ease on the next occasion.
- If the Glue Smart Lock is to be unused for an extended period of time, please remove the batteries to help protect against battery leakage.
- To disconnect your Glue Smart Lock, remove all the batteries.
- To disconnect your Glue Wi-Fi Hub, either switch off at the power socket or remove from the power socket.

Restrictions of use

- The Glue smart lock is rated at 6V DC. This Glue Wi-Fi Hub is rated at 110 – 120V AC 50/60 Hz only.
- The Device(s) should be used and stored between the following temperatures 14°F and 104°F.
- Ensure that the Device(s) are not located in direct sunlight for prolonged periods of the day.
- The Device(s) should not become wet during use.
- Ensure that the Device(s) are not used in excessively dusty environments.
- The Device(s) must not have been misused, abused, disassembled or modified in any way.
- This device is verified to comply with part 15 of the FCC Rules for use with cable television service.
- This device complies with part 15 of the FCC Rules. Operation is subject to the following two conditions:
 1. This device may not cause harmful interference, and
 2. this device must accept any interference received, including interference that may cause undesired operation.
- Please note that changes or modifications not expressly approved by the party responsible for compliance could void the user's authority to operate the equipment.
- Please note that changes or modifications not expressly approved by the party responsible for compliance could void the user's authority to operate the equipment.

Compliance information

Note: This equipment has been tested and found to comply with the limits for a Class B digital device, pursuant to part 15 of the FCC Rules. These limits are designed to provide reasonable protection against harmful interference in a residential installation. This equipment generates, uses and can radiate radio frequency energy and, if not installed and used in accordance with the instructions, may cause harmful interference to radio communications. However, there is no guarantee that interference will not occur in a particular installation. If this equipment does cause harmful interference to radio or television reception, which can be determined by turning the equipment off and on, the user is encouraged to try to correct the interference by one or more of the following measures:

- Reorient or relocate the receiving antenna.
- Increase the separation between the equipment and receiver.
- Connect the equipment into an outlet on a circuit different from that to which the receiver is connected.
- Consult the dealer or an experienced radio/TV technician for help.

Radio-frequency Radiation Information

- This equipment complies with radio frequency exposure limits set forth by the FCC for an uncontrolled environment.
- This equipment should be installed and operated with a minimum distance of 5 cm between the device and the user or bystanders.
- This device must not be co-located or operating in conjunction with any other antenna or transmitter.

Transmitter Antenna for Licence-Exempt Radio Apparatus Information

- This radio transmitter IC:21878-LOCKV2 & IC:21878-HUBV1 has been approved by Industry Canada to operate with the antenna types listed below with the maximum permissible gain indicated. Antenna types not included in this list, having a gain greater than the maximum gain indicated for that type, are strictly prohibited for use with this device.
- Le présent émetteur radio IC:21878-LOCKV2 & IC:21878-HUBV1 a été approuvé par l'Industrie du Canada pour fonctionner avec les types d'antenne énumérés ci-dessous et ayant un gain admissible maximal. Les types d'antenne non inclus dans cette liste, et dont le gain est supérieur au gain maximal indiqué, sont strictement interdits pour l'exploitation de l'émetteur.

Notice for Licence-Exempt Radio Apparatus

- This device complies with Industry Canada's licence-exempt RSSs. Operation is subject to the following two conditions:
 - (1) This device may not cause interference; and
 - (2) This device must accept any interference, including interference that may cause undesired operation of the device.
- Le présent appareil est conforme aux CNR d'Industrie Canada applicables aux appareils radio exempts de licence. L'exploitation est autorisée aux deux conditions suivantes:
 - (1) l'appareil ne doit pas produire de brouillage;
 - (2) l'utilisateur de l'appareil doit accepter tout brouillage radioélectrique subi, même si le brouillage est susceptible d'en compromettre le fonctionnement.
- This equipment complies with radio frequency exposure limits set forth by the Industry Canada for an uncontrolled environment.
- This equipment should be installed and operated with a minimum distance of 20 cm between the device and the user or bystanders.
- This device must not be co-located or operating in conjunction with any other antenna or transmitter.
- Cet équipement est conforme aux limites d'exposition aux radiofréquences définies par l'Industrie du Canada pour un environnement non contrôlé.
- Cet équipement doit être installé et utilisé avec un minimum de 20 cm de distance entre le dispositif et l'utilisateur ou des tiers.
- Ce dispositif ne doit pas être utilisé à proximité d'une autre antenne ou d'un autre émetteur.

Innovation, Science and Economic Development Canada ICES-003 Compliance Label
CAN ICES-3 (B)/NMB-3(B)

Please read these instructions, our Terms and Conditions and our Privacy Policy carefully and make sure that you understand them, before you start using the Device(s). Our Terms and Conditions and Privacy Policy can be found at our website, www.gluehome.com.

By downloading the Glue application and registering an account with Glue you acknowledge that you have read, agreed to and accept the Terms and Conditions and Privacy Policy and commits to adhere to them. Please note that Glue may update the Terms and Conditions and Privacy Policy from time to time, in accordance with the Terms and Conditions and Privacy Policy.

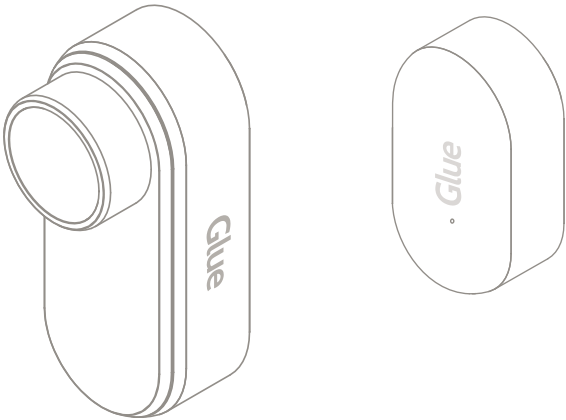
SKU01.13/14/15 20161206 US/CA FCC



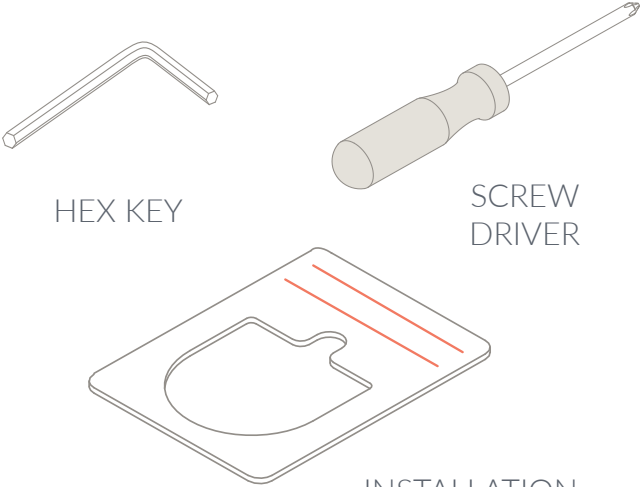
INSTALLATION GUIDE

CONTENTS

GLUE SMART LOCK GLUE WI-FI HUB

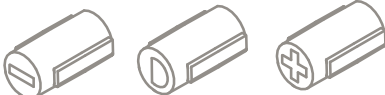


YOU WILL USE THESE PARTS DURING INSTALLATION

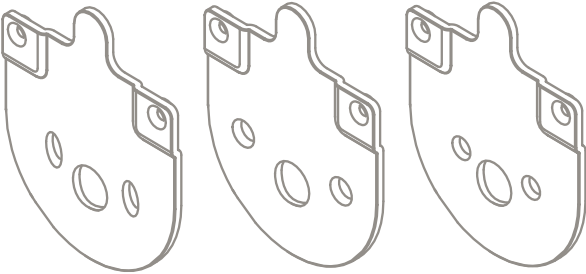


INSTALLATION TEMPLATE

YOU WILL USE ONE OF EACH OF THESE PARTS



INSERTS



DOOR PLATES

For any help or support visit www.gluehome.com/support

DOWNLOAD THE APP



GLUE LOCK