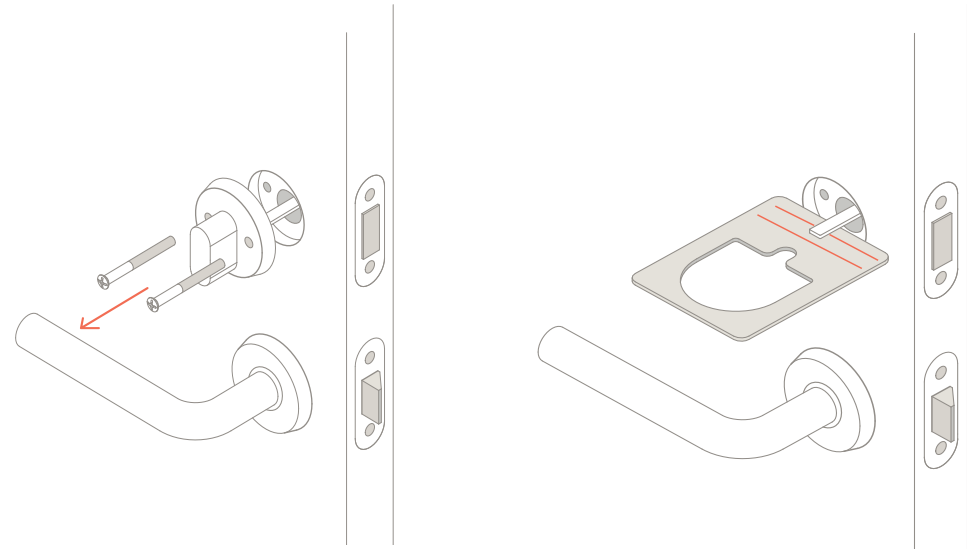
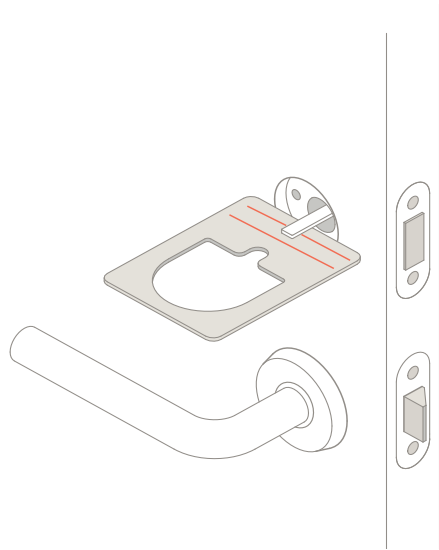


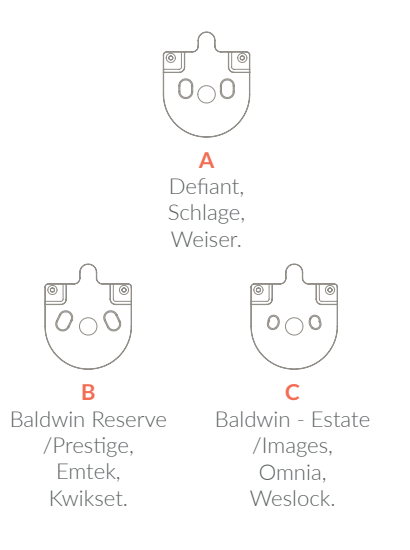
Step 1. Download the app. Secure the lock cylinder on the outside of the door with tape. This ensures it is held securely in place, whilst you fit your Glue Smart Lock.



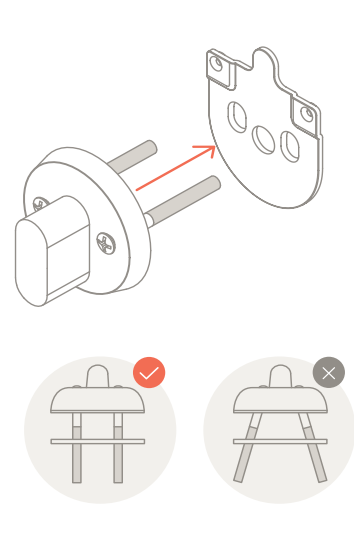
Step 2. Remove the existing thumb turn, by unscrewing the two screws in the thumb turn plate. Keep these screws as you will use them later, if they are long enough.



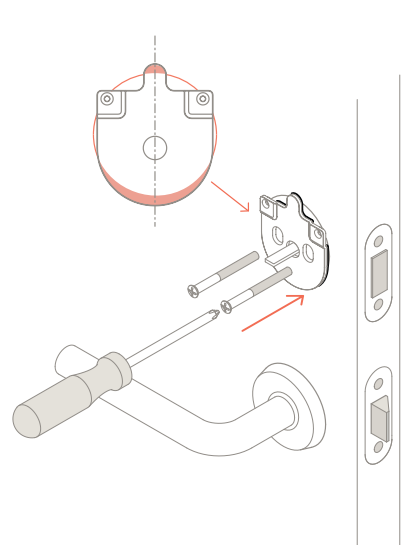
Step 3. Measure the existing tail piece in your lock using the install template. The end should sit between the **MAX** and **MIN** lines. **If not contact support@gluehome.com**



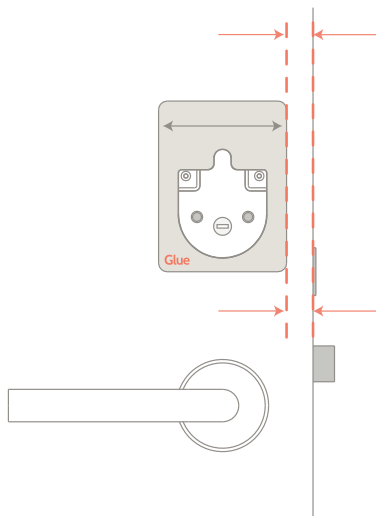
Step 4. Use the guide above to select the correct door plate. If you do not know the brand or it is not listed; go to Step 5 to help select the correct one.



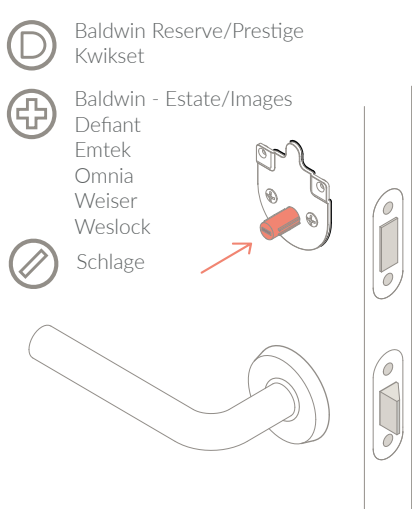
Step 5. To select the correct door plate, put the screws in your existing thumb plate and slide the door plates on. The correct plate is the one that the screws remain parallel in.



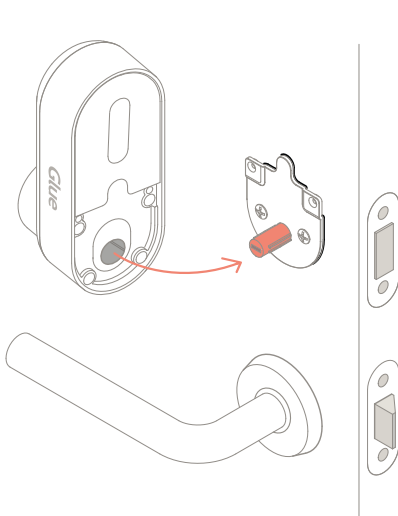
Step 6. Attach the door plate loosely using the screws from Step 2. Ensure the door plate is central and touching the door top and bottom. The rubber side faces the door.



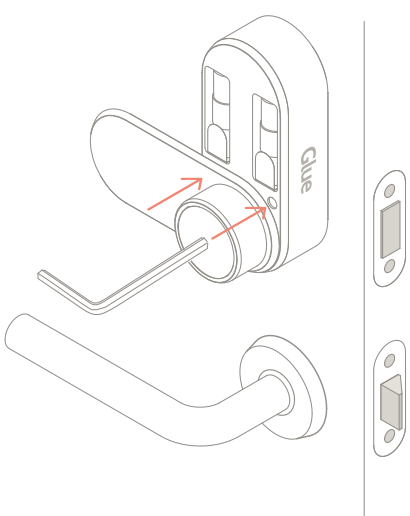
Step 7. Ensure the door plate is straight by using the Glue Installation Template as a guide with the side of the door. Now fully tighten the screws, but do not over tighten.



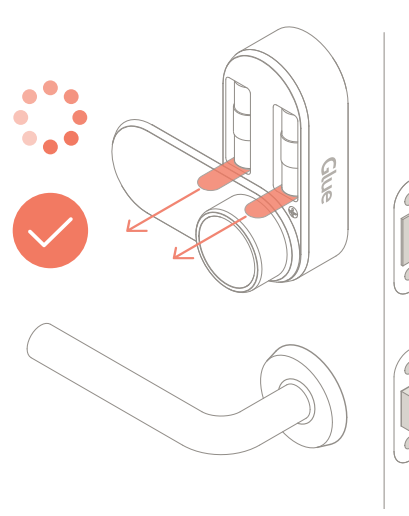
Step 8. Use the guide above to select the correct insert. If you do not know the brand or it is not listed, select the one that is the best fit with the existing tail piece.



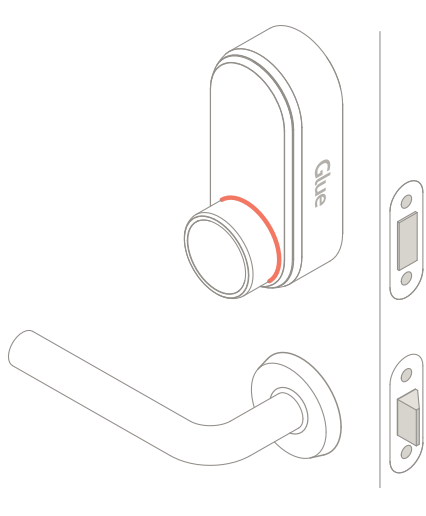
Step 9. Turn the thumb turn on the Glue Smart Lock to the approximate centre, so the slots inside align with the insert. Then slide the Glue Smart Lock onto the door plate.



Step 10. Screw the Glue Smart Lock to the door plate. Turn the thumb turn on the Glue Smart Lock to check the latch opens and closes smoothly, if not return to Step 4.



Step 11. Check the lock is securely fastened to the door. If not, check all screws are tightened. Then remove the battery tabs. The light behind the thumb turn will glow.



Step 12. Your Glue Smart Lock is now ready to calibrate. **Continue following the instructions in "Add new Glue Lock" in the app.**