

Test setup photos of EUT

1. Orthogonal plane of EUT

- The testing was set in the below orthogonal plane and measured.

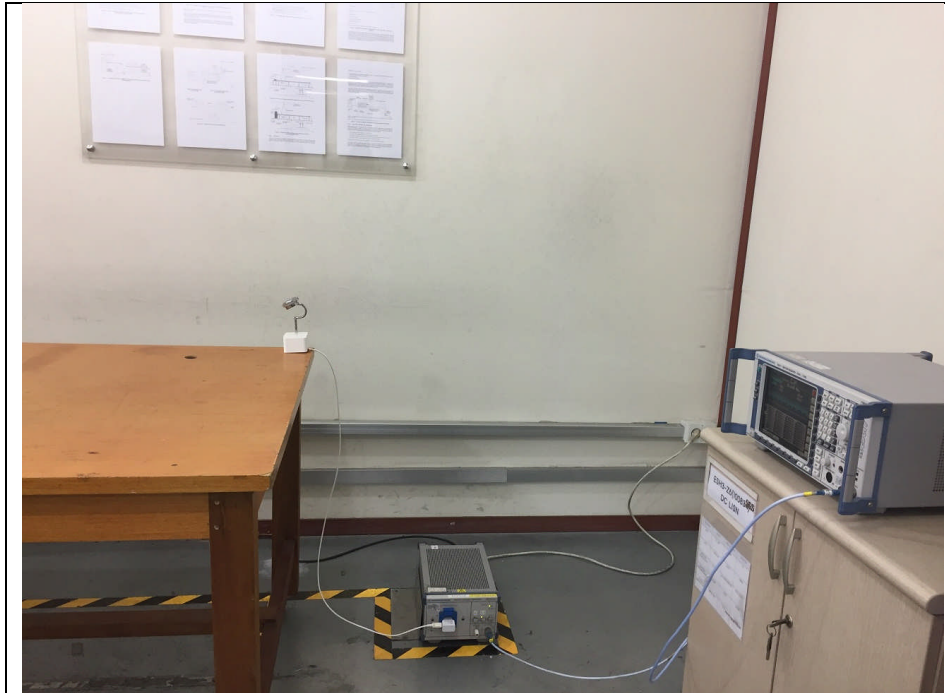
X-axis



2. Photo of Radiated Spurious Emission Test (Below 30 MHz)



3. Photos of AC Power line emission test



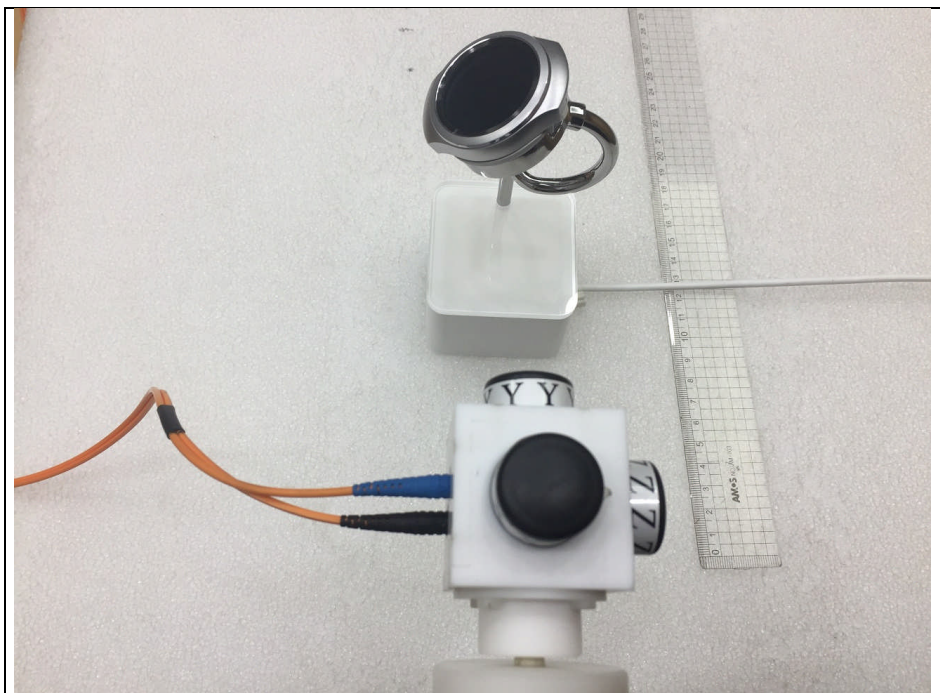
4. Photos of MPE test Set up

A. E-Field Probe

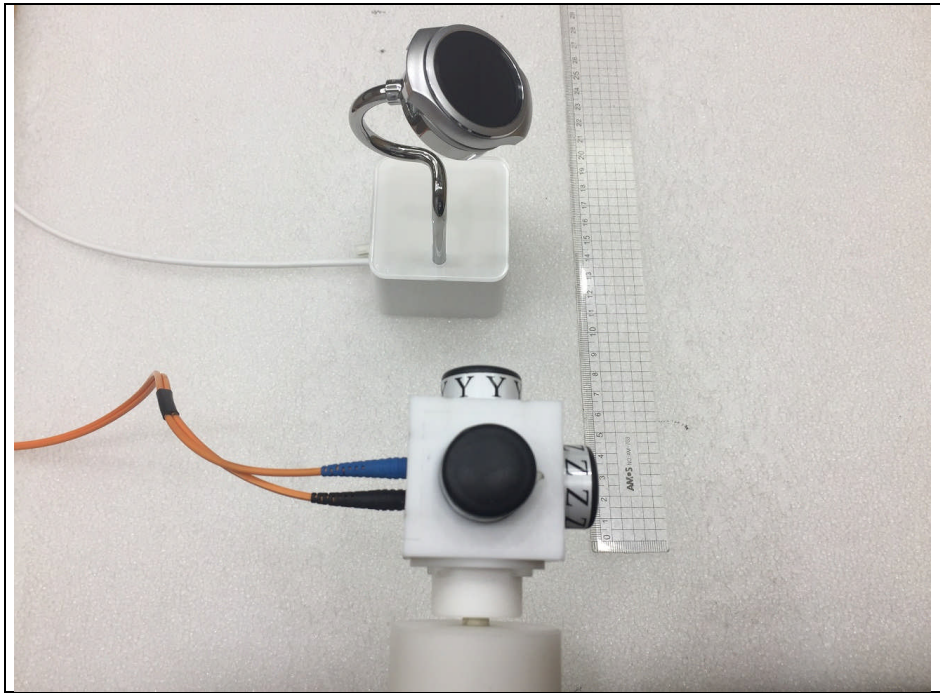
Probe Position A



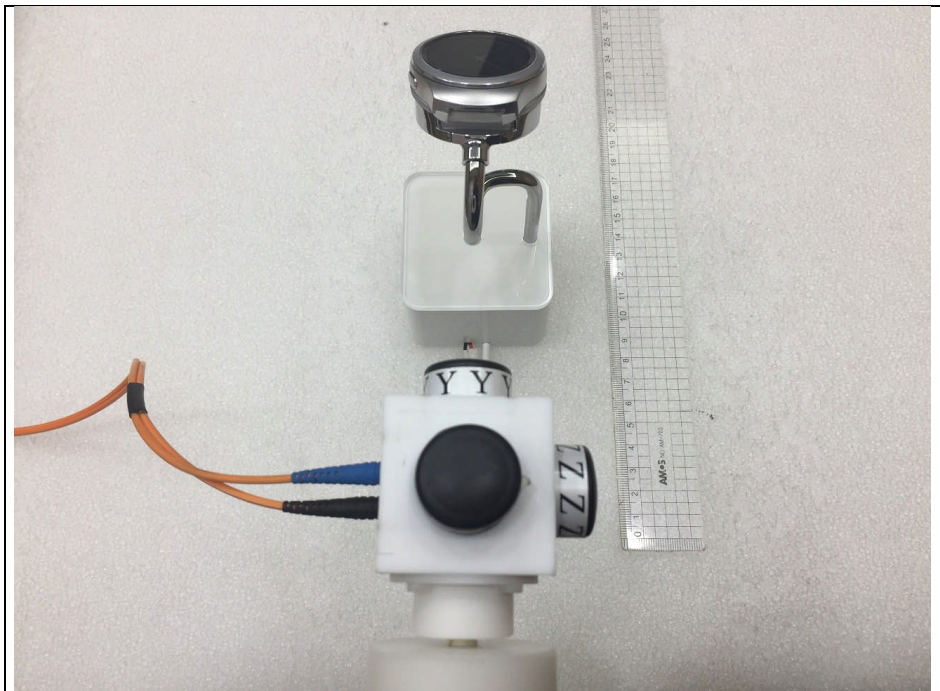
Probe Position B



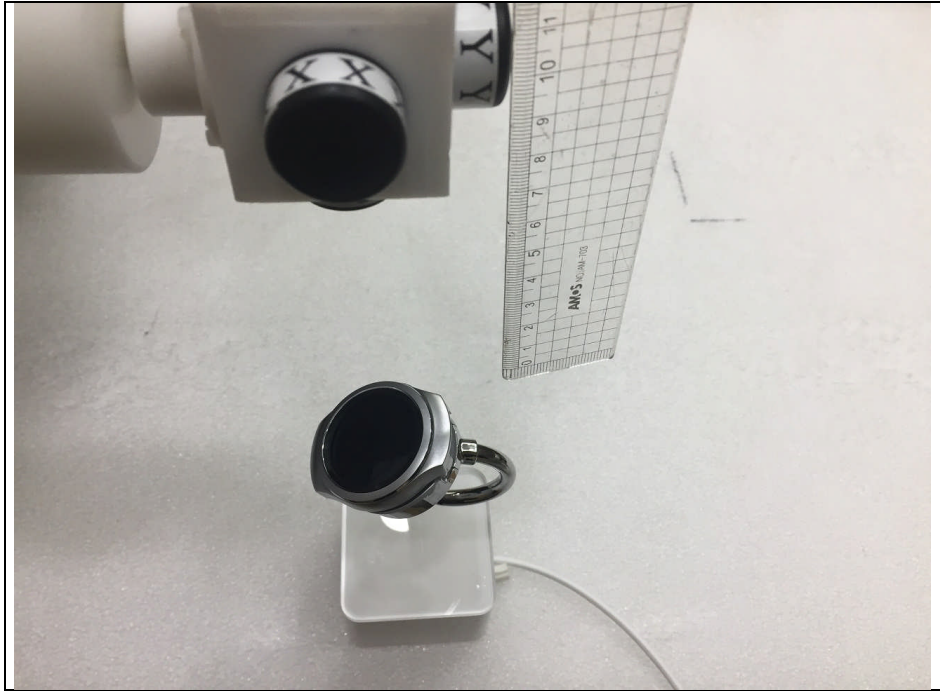
Probe Position C



Probe Position D



Probe Position E



B. B-Field Probe

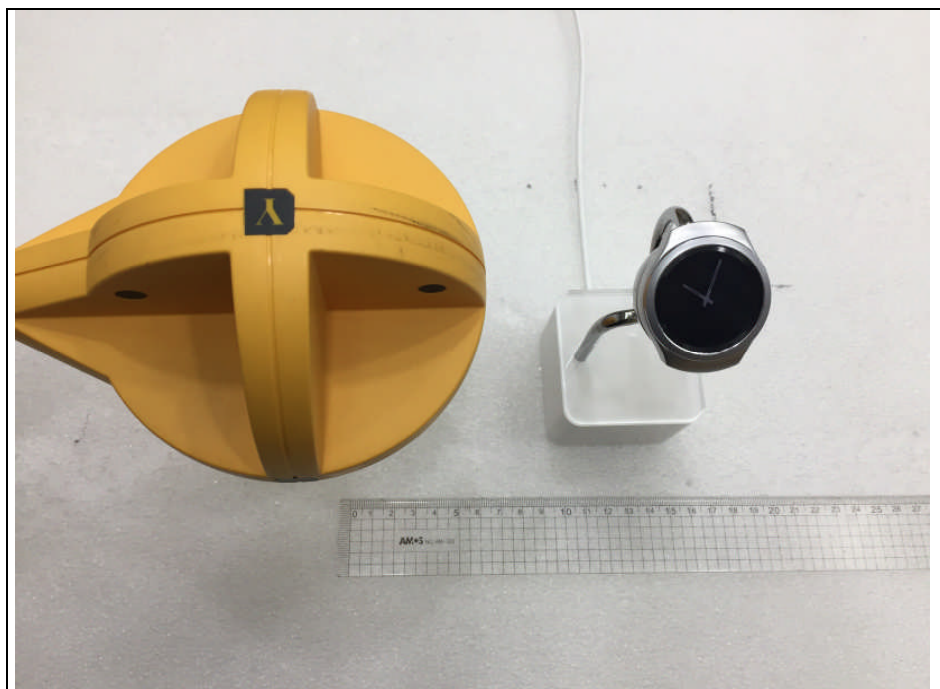
Probe Position A



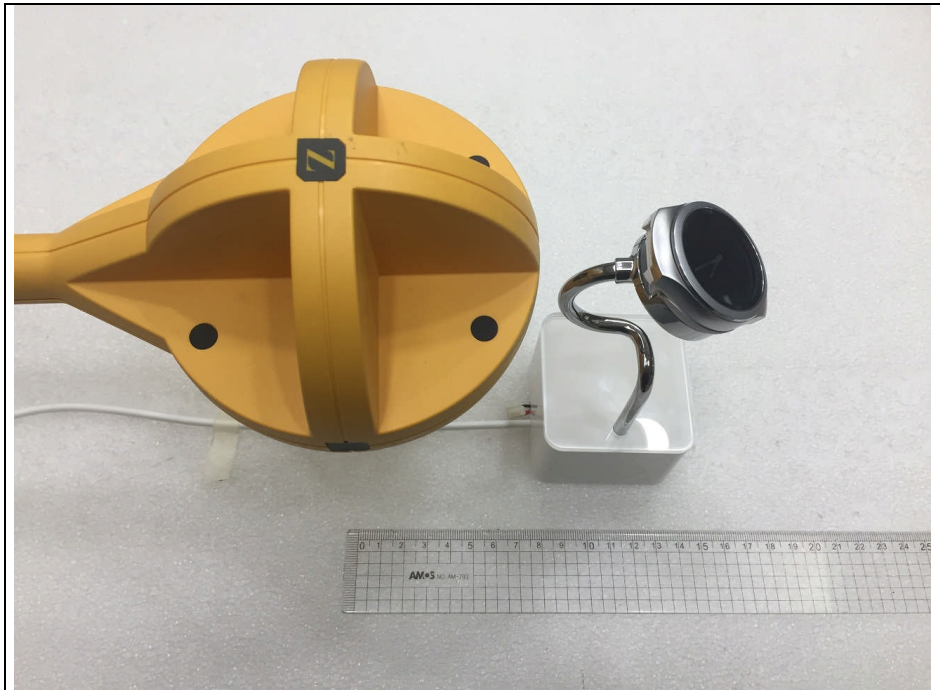
Probe Position B



Probe Position C



Probe Position D



Probe Position E

