

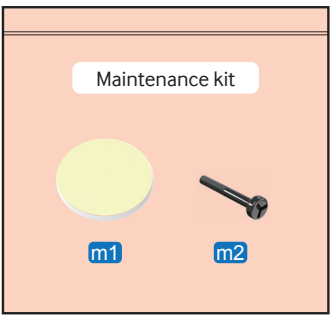


Please, read carefully the installation manual before installing it, and install it according to the manual. Please, keep the manual for a future reference.

► Before installing, Please check up the parts.



■ Maintenance kit  
Use if the product needs to be reinstalled.



## ► Installation Guide - Gear S3 frontier/classic Normal Security Set

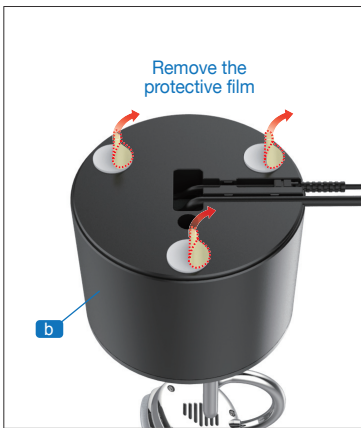
### ■ Assembling flow



### ⚠ CAUTION A. - Cautions when attaching the double-sided tape.

1. After removing the protective film from the double-sided adhesive tape, preserve the tape so that it doesn't get dirty.  
**If touching the tape with a hand or foreign materials get on it, its adhesive strength can be significantly deteriorated.**
2. The adhesive tape will have full adhesive strength after the 24 hours from its placement.  
Please do not use the products right after its placement.

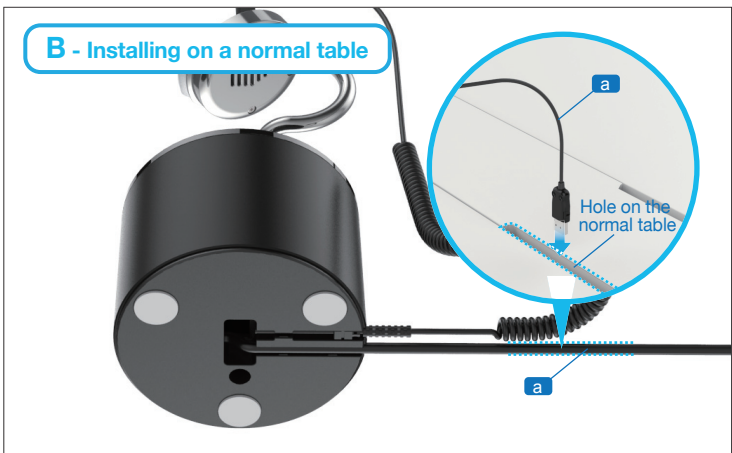
**1** Remove the protective film from all double-sided tapes on the bottom surface of the cradle (b).



**2-A** Insert the Charging & security cable (a) into the hole on the smart table while facing downward, and attach the cradle over the hole on the table.



**2-B** Array the Charging & security cable (a) into the cable guide of the cradle properly, insert it into the hole on the table in the direction to the rear side of the cradle and attach it on the proper position firmly.



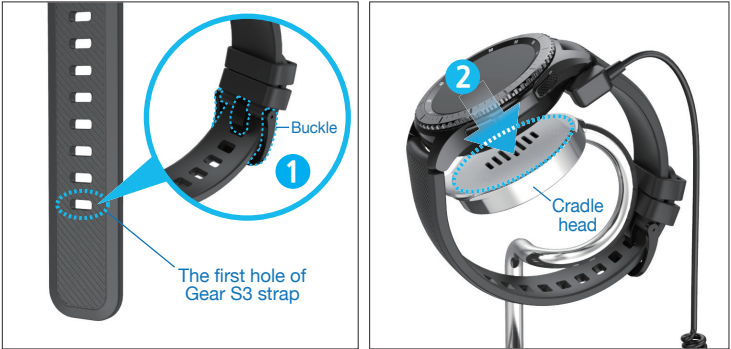
**3** Loosen the screw (silver) in the direction where the strap buckle side using the screw driver included in the package.  
※ Make sure that the screw in the direction where the buckle side be loose.  
※ Keep the screw (silver) separated from Gear S3 carefully.



**4** Assemble the Security sensor (c) along Gear S3 while paying attention to the assembling direction. After assembling the Security sensor correctly, fix the Gear S3 and the Security sensor firmly using the black screw (g) for fixing the Security sensor included in the package.  
※ Before assembling the product, make sure to check the screw color (black).



**5** Install the buckle in the first hole of Gear S3 strap as below figure, and put the device on the center of cradle head.  
※ Make sure that the buckle should be installed in the first hole of strap.  
※ The wireless charger and the magnet are built in cradle head.

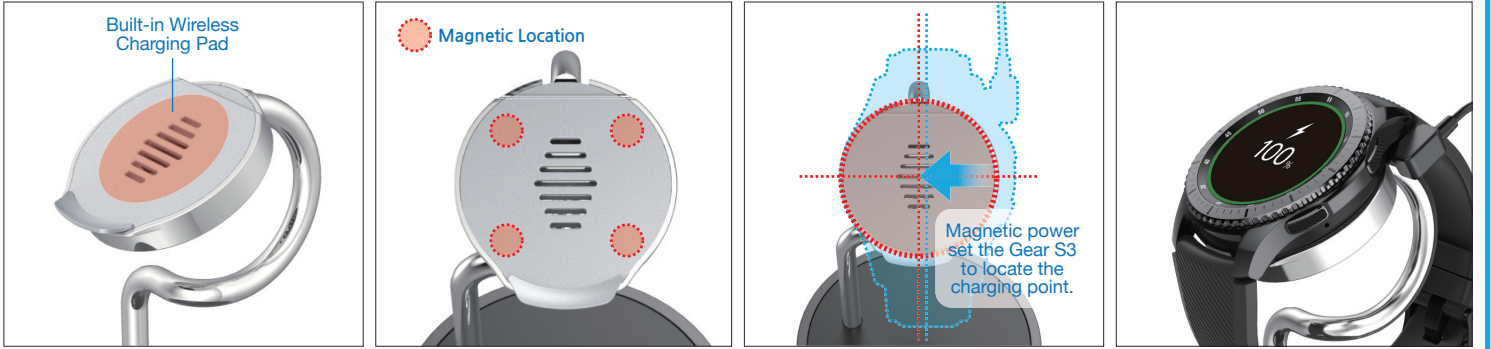


**6** When mounting Gear S3 on the cradle head, check if the cable of the Security sensor (c) is installed correctly to direction of the rear side of the cradle as shown in the figure below.  
※ If the Security sensor is installed in the wrong direction, install it again by checking the assembling direction in 3 of the installation guide.

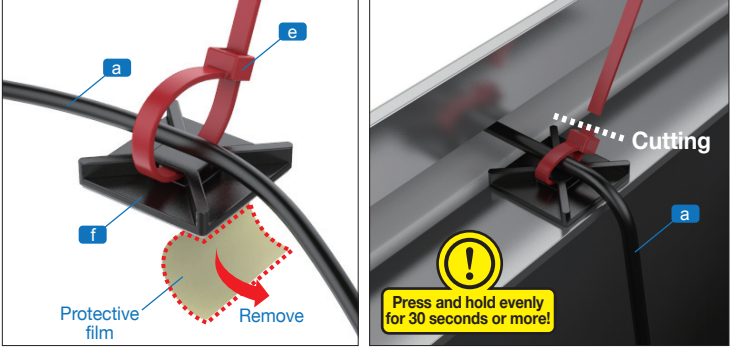


Auto adjustment head by magnet

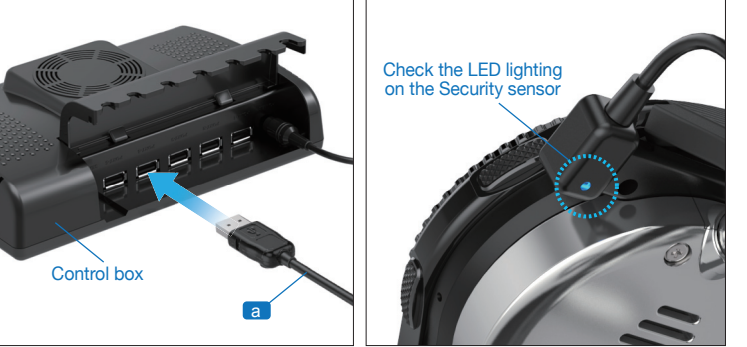
The coil for wireless charging function and magnetic to places the Gear S3 in right charging point are built in head of security cradle. When put the Gear S3 onto cradle, the magnetic power guides the device to center of cradle. If it is set apart from center, the charging will not Working.



**7** Assemble the security cable (a) temporarily using the cable tie (e) and the cable tie mount (f). Remove the protective film from the double-sided table on the bottom surface of the cable tie mount, attach the cable tie mount (f) firmly on the proper position on the table, pull and tighten up the table tie (e) completely and cut off any excess part.



**8** After finishing the installation, connect the security cable connector (a) to the Control box and turn on the power. If the power supply is connected normally, LED on the Security sensor will turn on.



► How to separate the Security sensor

※ Before separating the Security sensor, make sure to turn off the Control box.

**1** Turn off the Control box, separate the security cable connector (a), and loosen the black screw (g) assembled to the Security sensor.  
※ If you separate the connector (a) without turning off the Control box, an alarm will occur.



**2** Separate the Security sensor (c) and assemble the screw (silver) for Gear S3.  
※ Make sure to use the screw (silver) separated from Gear S3 before installing the Security sensor. If the screw (black) for installing the Security sensor is used, it will not be assembled normally.



► Safety warning

**Warning:** To prevent the injury of the user or other people and property damage, the following instructions must be followed.

- Do not expose the product to fire or other electric heaters!
  - There is a danger of fire or damage to the product.
- Do not disassemble, repair, or remodel the product!
  - There is a danger of injury.
  - Please call the service center when repair is necessary.
- Do not forcefully bend or pull the wire!
  - There is a danger of damage to the product or injury to the user.
- When the wire is disconnected or breaks away, do not touch the wire with bare hands, but always wear protective hand gloves!
  - The disconnected part of the wire is sharp, thus, may cause injury.
- Do not use the wire for purposes other than as a security alarm device, and do not allow access to children!
  - Winding the wire around your neck or body may result in death or serious injury.
- Do not touch the wire when there is lightning and thunder!
  - There is a danger of electric shock.

※ The specifications and design of the product may be modified without prior notice for the improvement of product performance.

► Information

■ Limited warranty

| Item  | Warranty Period |
|---|-----------------|
| Gear S3 frontier/classic Normal Security Set                                  | One-year        |
| *In case of user's fault during the warranty period it is not free of charge. |                 |

■ Manufacturer Information

|              |   |
|--------------|---|
| Manufacturer | KUMOH Electronics Co.,Ltd   |
| Address      | 35, Gilju-ro 444beon-gil, Wonmi-gu, Bucheon-si, Gyeonggi-do (Seoul 14556 Korea) |
| Tel          | 82-32-662-2000  |
| Fax          | 82-32-662-9312  |
| E-mail       | info@kumohco.co.kr  |

**FCC Warning Statement**

FCC Part 15.19

This device complies with part 15 of the FCC Rules. Operation is subject to the following two conditions: (1) this device may not cause harmful interference, and (2) this device must accept any interference received, including interference that may cause undesired operation.

FCC Part 15.21

Any changes or modifications (including the antennas) to this device that are not expressly approved by the manufacturer may void the user's authority to operate the equipment.

**FCC Radiation Exposure Statement**

This equipment complies with FCC Radiation exposure limits set forth for an uncontrolled environment. This device and its antenna must not be co-located or operating in conjunction with any other antenna or transmitter.

This equipment should be installed and operated with a minimum distance of 10cm between the radiator and your body.

**IC Warning Statement**

This device complies with Industry Canada licence-exempt RSS standard(s).

Operation is subject to the following two conditions: (1) this device may not cause interference, and (2) this device must accept any interference, including interference that may cause undesired operation of the device.

Le présent appareil est conforme aux CNR d'Industrie Canada applicables aux appareils radio exempts de licence. L'exploitation est autorisée aux deux conditions suivantes : (1) L'appareil ne doit pas produire de brouillage, et (2) L'utilisateur de l'appareil doit accepter tout brouillage radioélectrique subi, même si le brouillage est susceptible d'en compromettre le fonctionnement.

**IC Radiation Exposure Statement**

This equipment complies with IC RF Radiation exposure limits set forth for an uncontrolled environment. This device and its antenna must not be co-located or operating in conjunction with any other antenna or transmitter.

This equipment should be installed and operated with a minimum distance of 10cm between the radiator and your body.

Cet équipement est conforme aux limites établies par Industrie Canada en matière d'exposition aux radiofréquences dans un environnement non contrôlé. Cet appareil et son antenne ne doivent pas être colocalisés ou fonctionner en conjonction avec tout autre antenne ou émetteur.

Cet équipement doit être installé et utilisé avec une distance minimale de 10cm entre le radiateur et votre corps.