

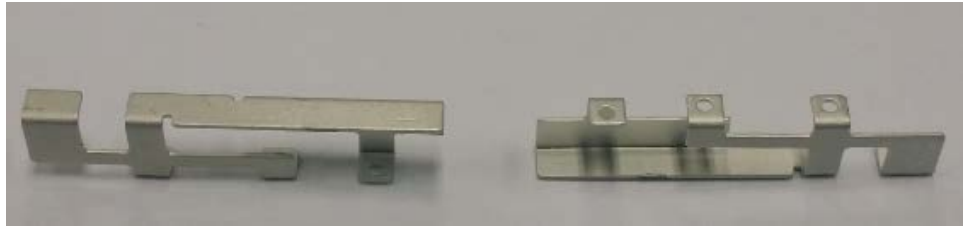
2400 – 2500 & 5150 – 5875 MHz Dual Band Antenna

(802.11 a/b/g/n, includes frequencies of Bluetooth, ZigBee, and Wi-Fi products)

Part Number: 2108517-2

Product Facts

- This dual WIFI antenna Provides available SMT method Easy-to-use
- RoHS compliant
- Available in tape & reel



Recommendations

- Minimum matching circuits required
- This antenna provides very high performance And broad Bandwidth.
- Bandwidth and performance is dependent on ground plane size.

Specifications

Frequency Range(MHz) --

2400-2500; 5150-5875

Peak Gain-- +3dBi

VSWR-- <3.0:1

Azimuth Beamwidth—Omni directional

Power Handling— 3 Watt cw

Feed Point Impedance—50 ohms

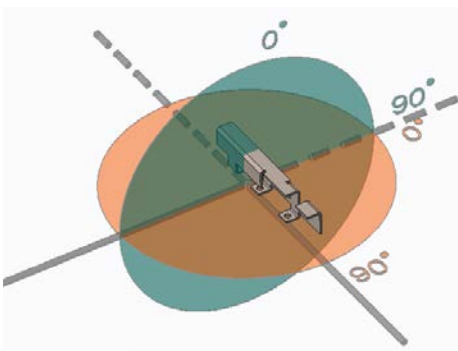
Size—22.75*2.4*4.8mm

Weight— 0.33g

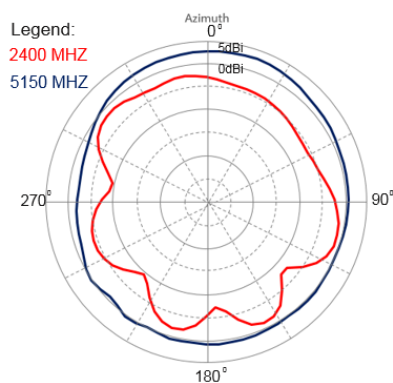
Mounting—Surface-mount

Keep Out Area—See diagram on page 2

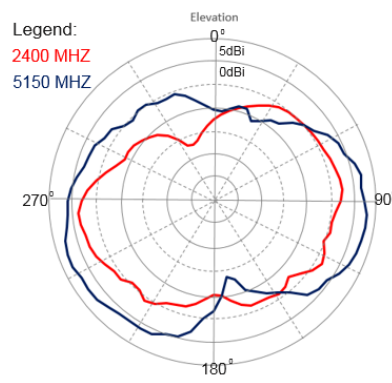
Test Orientation in Free Space



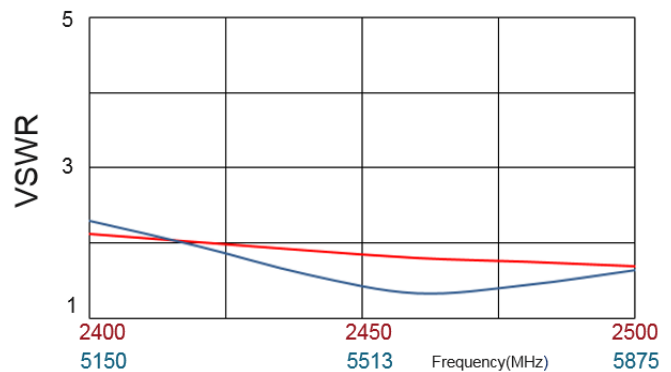
Azimuth



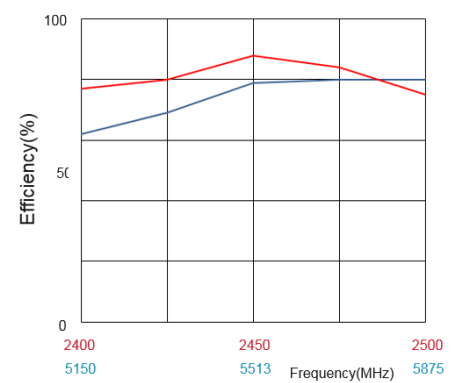
Elevation



VSWR



Efficiency



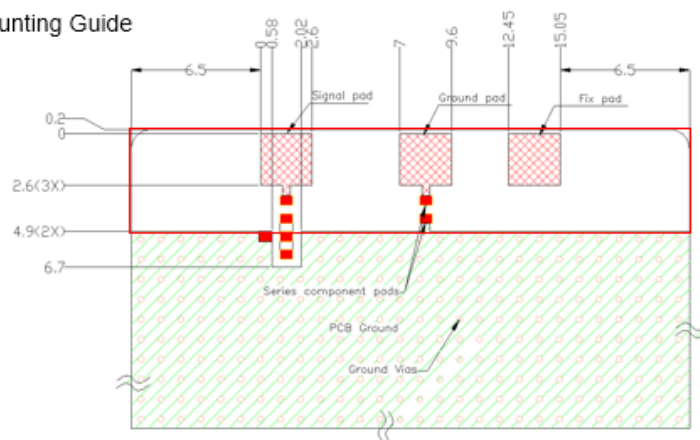
2400 – 2500 & 5150 – 5875 MHz Dual Band Antenna


(802.11 a/b/g/n, includes frequencies of Bluetooth, ZigBee, and Wi-Fi products)

Part Number: 2108517-2

(Continued)

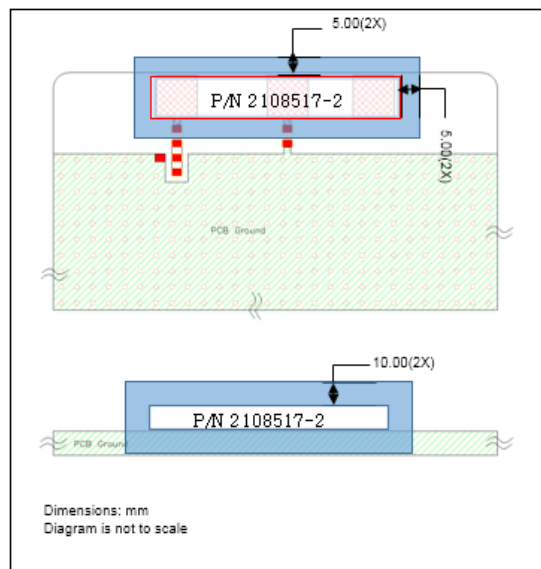
Mounting Guide



- NOTES: 1. Suggested matching component pads.
2. Antenna must be mounted on the edge of PCB.
3. NC = No connection (mechanical mounting pads).
4. No copper allowed in designated area on all PCB layers - 
5. For more information please call TE.

Dimensions: mm
Diagram is not to scale

Keep Out Area



Approx. Dimensions

