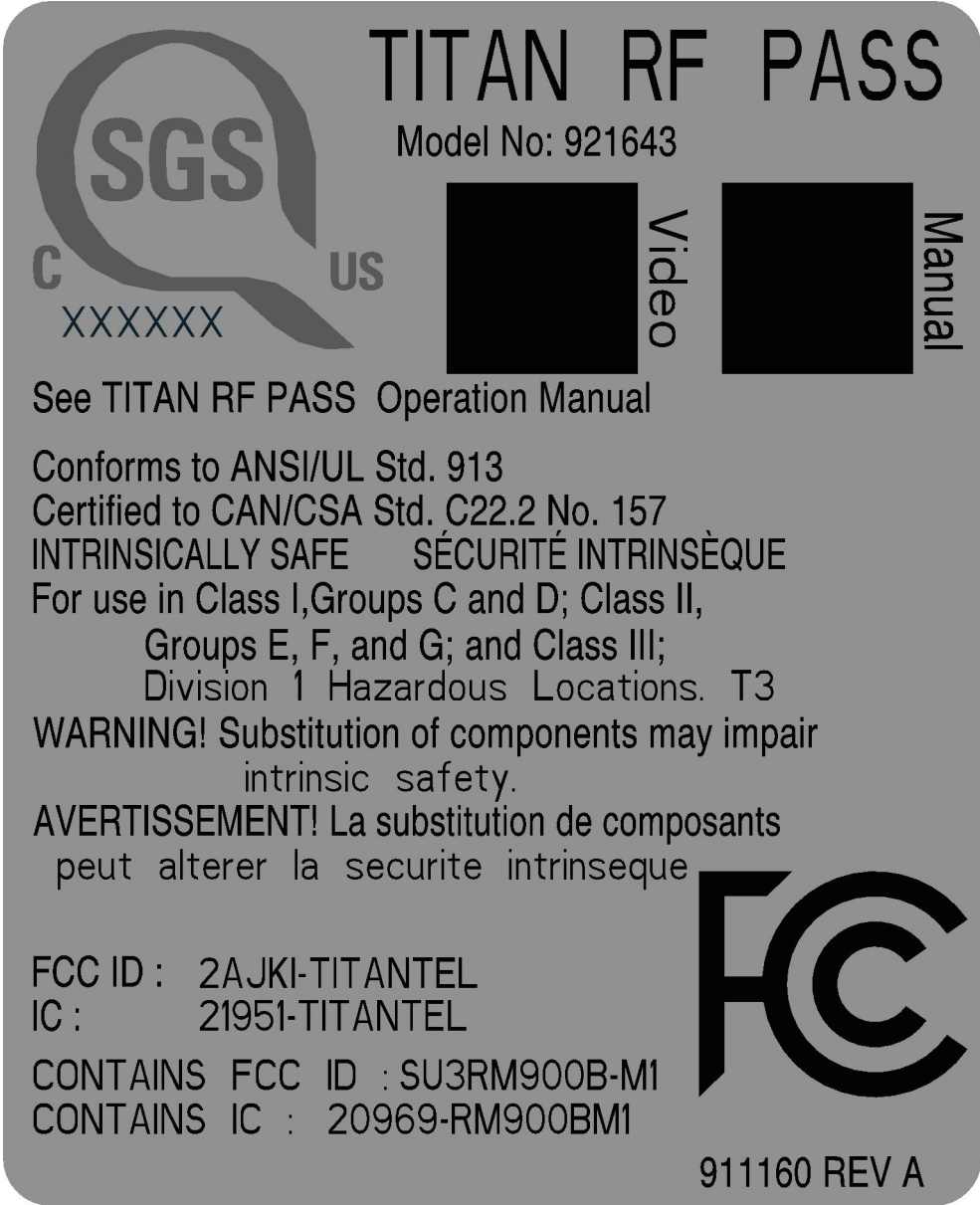
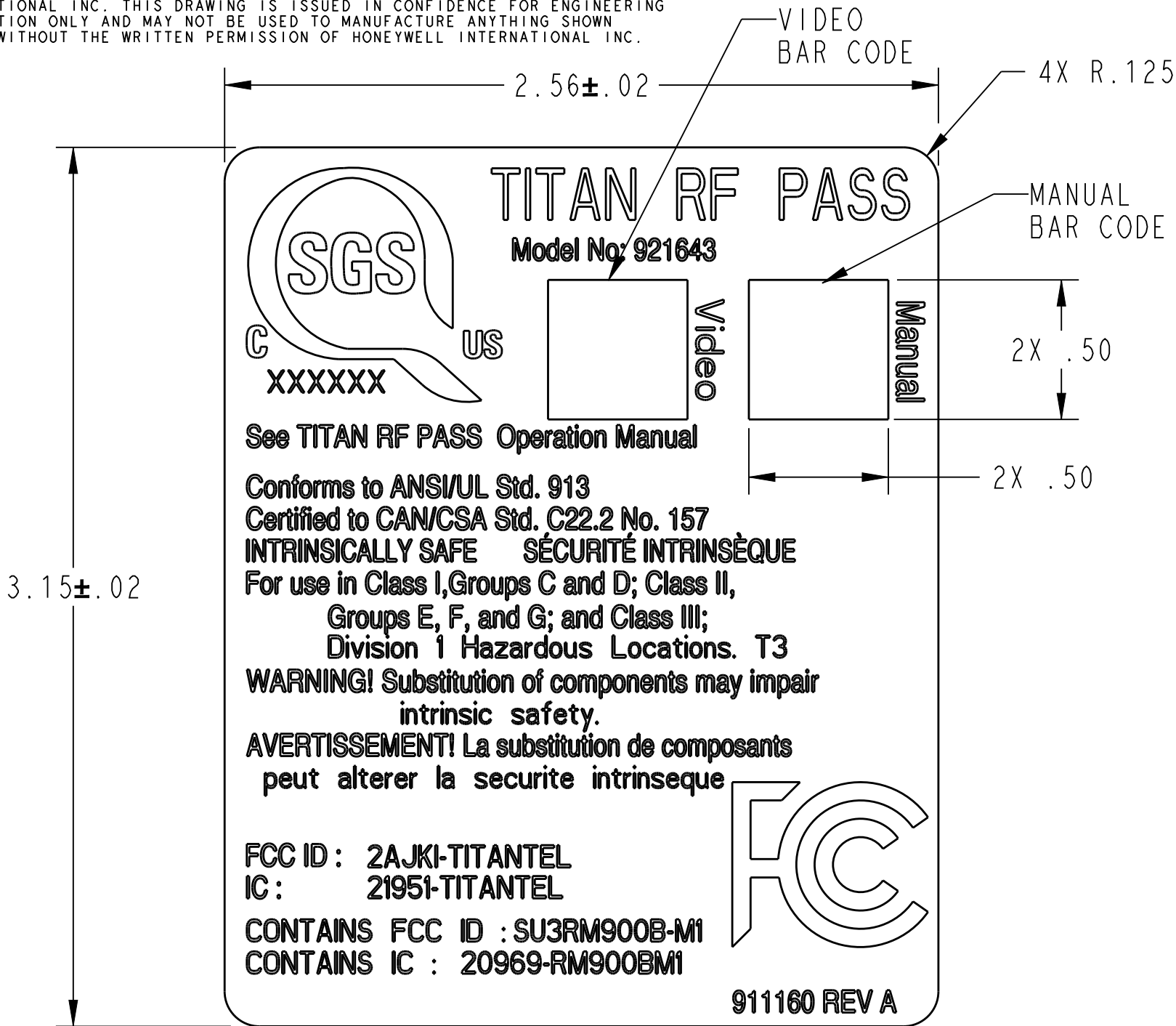


THE MATERIAL DISCLOSED HEREON IS THE PROPRIETARY RIGHT OF HONEYWELL INTERNATIONAL INC. THIS DRAWING IS ISSUED IN CONFIDENCE FOR ENGINEERING INFORMATION ONLY AND MAY NOT BE USED TO MANUFACTURE ANYTHING SHOWN HEREON WITHOUT THE WRITTEN PERMISSION OF HONEYWELL INTERNATIONAL INC.

REVISIONS					
LTR	E.O. TYPE & NO.	DRAWN BY	DATE	APPROVED	DATE
A	ECN #2018-4930	BNK	02-01-19		



REFER TO ARTWORK, VIEW IS FOR REFERENCE ONLY

ARTWORK TO BE AS PER IMAGE SHOWN

SCALE 2/1

PRINTED MATERIAL SPECIFICATION(ART WORK NO.: 911160A-ART)

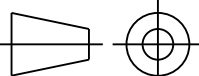
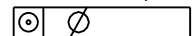
- ART WORK OVERALL DIMENSIONS: 2.56±.02 X 3.15±.02 X .125 CORNER RADIUS
- MATERIAL 1: NONE
MATERIAL 2: NONE
- PRINT COLORS(S): BLACK ON PANTONE 423, GREY BACKGROUND
- PROTECTIVE FINISH: 1 MIL CLEAR PPET LAMINATION W/PERM ADHESIVE
- SUBSTRATE MATERIAL: 2 MIL WHITE C.I. 40#BG POLYESTER W/PERM ADHESIVE
- ADHESIVE: S8020 PERMANENT, PRESSURE SENSITIVE, WATER-RESISTANT
- SCORING: NONE
- FOLDING: NONE
- STAPLING: NONE
- RECOMMENDED PACKAGING: ROLLS
- SPECIAL INSTRUCTIONS: FONT - SANS SERIF, OPTIONAL
WEATHERING AND TEMPERATURE EXTREMES.

2. C OF C REQUIRED FOR MATERIALS AND ALL LISTED CHARACTERISTICS.

- MAIN BODY TEXT TO BE 2MM HIGH, MINIMUM. SGS LOGO TO BE 10MM HIGH MINIMUM.

NOTES: UNLESS OTHERWISE SPECIFIED

MI OR MITP:
CAD FILE NAME: PRO/E 911160

				PART NUMBER	DESCRIPTION		DRAWING NUMBER	ITEM NO.
				QUANTITY	PARTS LIST			
<div>UNLESS OTHERWISE SPECIFIED:</div> <div>PROJECTION:</div> <div></div> <div>DIMENSIONS ARE IN INCHES</div> <div>TOLERANCES: .XX±0.03 .XXX±0.005</div> <div>ANGLES: ± 0.5</div> <div>SURFACE ROUGHNESS: ✓</div> <div>ALL DIA'S </div> <div>REMOVE BURRS AND BREAK SHARP EDGES:</div> <div>FILLET AND CORNER RADII:</div> <div>DIMENSIONING PER ANSI Y14.100-2013</div> <div>INTERPRET THREADS PER FED-STD-H28</div> <div>DO NOT SCALE DRAWING</div> <div>"♦" DENOTES KEY CHARACTERISTIC PER EP-155</div>				MATERIAL:		<div>Honeywell Safety Products</div> <div>3001 South Susan Street - Santa Ana, CA 92704</div>		
				FINAL PROTECTIVE FINISH:		<div>IS, RFPASS, LABEL,</div> <div>TELEMETRY</div>		
				DRAWN BNK				
				ENGINEER BNK				
				APPROVAL				
MAX MAX		SIZE C	CAGE CODE 56434	DWG. NO. 911160				
		SCALE: 2/1 AND NOTED			SHEET 1 OF 1			