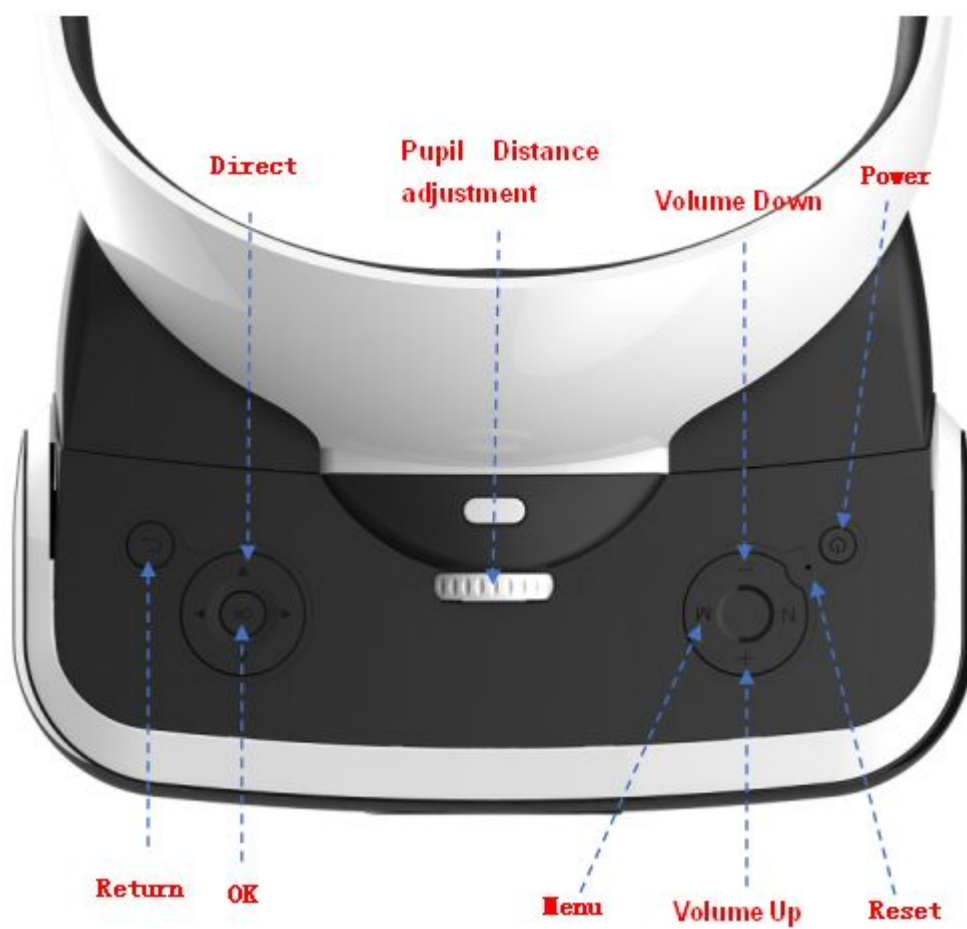


CP-V8 VR

User Manual

CP-V8 is a head-mounted virtual reality device that provides an immersive experience for a wide range of users.

Apparatus construct





USB. 2.0 Port

Object distance
adjustment

earphone
slot

TF card
port

Headband
adjustment



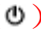








Charge the Device

Connect the charger to V8 USB2.0 port and use the only approved original USB cable and the 2A power adapter.

During the period of using the V8 device, the image on the screen may be connected temporarily inactive if the device is interrupted with the charger.

Meanwhile, the screen re-calibrates itself and the V8 will don't recognize the movement of the head.

Function Keys

Item	Function
Power ()	Extended Press: Turn on/off the device Short Press: Awake/Standby
Reset ()	Insert a Pin to restart the machine
Manual ()	Short Press: Brightness Adjustment, Volume UP/Down, Application off Extended Press: Gyro-position Calibration
Volume ()	Short Press: Volume Up/Down
OK ()	Short Press: To enter menu
Return ()	Short Press: Return the Previous function page
Direction -Up ()	Short Press: To select upwards
Direction -Down ()	Short Press: To select downwards
Direction-Left ()	Short Press: To select the left-forward
Direction-Right ()	Short Press: To select the right- forward

Indicator

Situation	Function
OFF	LED OFF
ON	Working: LED Blue; Standby: LED OFF
Charging	LED Blazing Charging finished:LED blue

Basic function

Application Keys

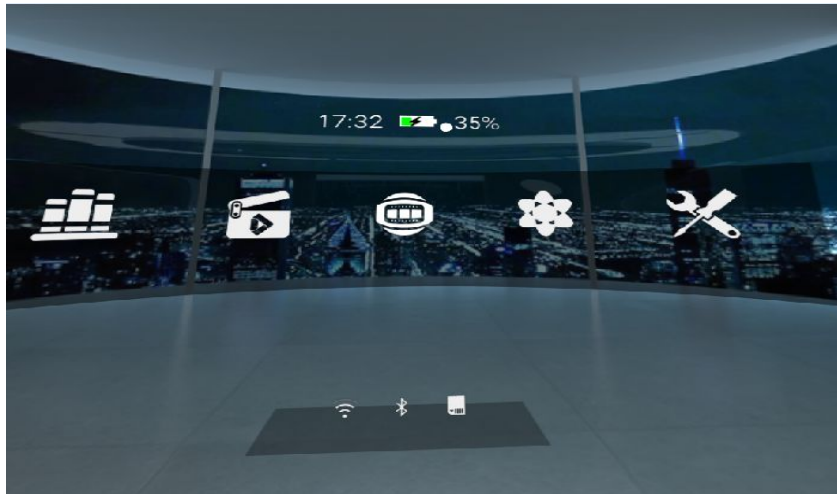
The key sheet locates on the side of the machine and functions are selected by keys or Gyroscope Cursor. Some of parts of application cann't be supported by the Up/down direction keys

VR Launcher

Using Gyroscope cursor or tapping the key sheet to operate the device,the keys pay auxiliary function

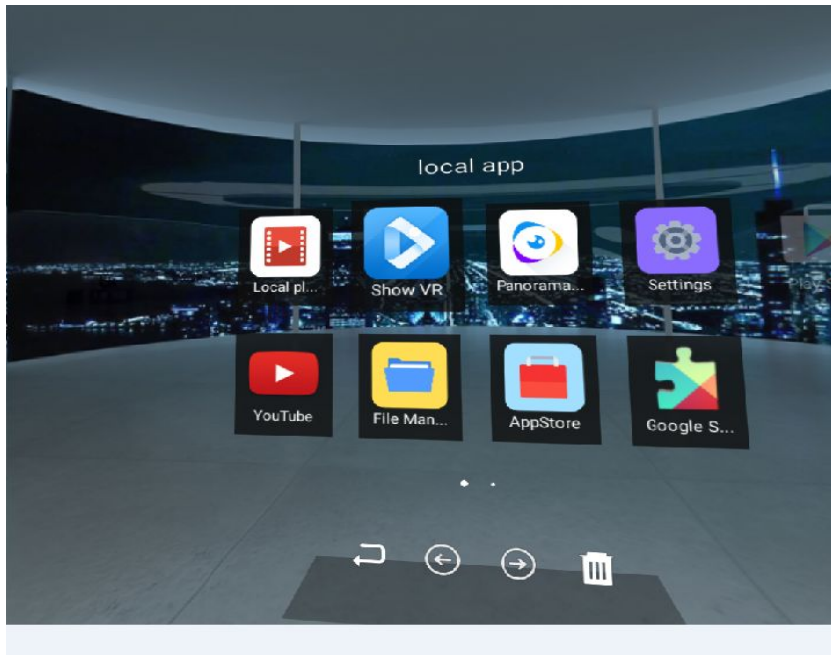
Main Interface

Tap OK to enter Application or the sub-menu when using Gyroscope cursor to operate the device



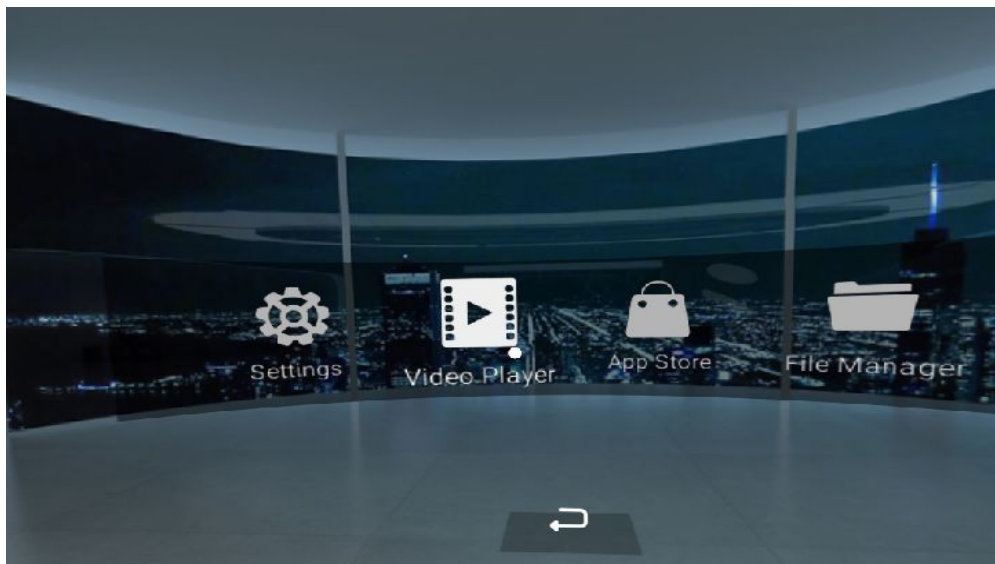
Local Applications

1. There are 2 ways to switch pages in Local Application page including using the Gyroscope cursor or tapping the keys.
2. There are four function keys; Left and right keys to switch the list page; Delete key to delete the APP; Return key to return to the home page.
3. Press the return key to return to the Home page



Tools

1. Tap OK to enter the sub-menu when Gyroscope cursor points onto the desired item
2. Press Return Button to exit Apps or back from Sub-menu to previous menu.
3. On the page of Setting, Local Theater, Marketing and Files, use the Return OR Back button to operate the device.

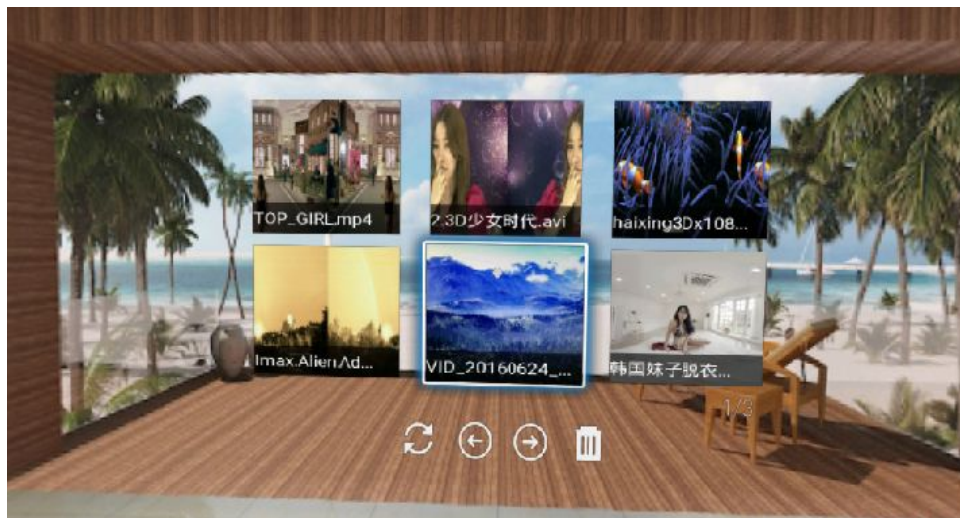


Theater

Tap OK to enter the sub-menu when Gyroscope cursor points onto the Theater;
 This operation are applied in other functions adjustment;
 The keys of the all-in-one device pay auxiliary function

Mode Operation for the list page

1. Tap OK to enter the sub-menu when Gyroscope cursor points onto the list page. Left/right direction keys on the device or menu are used to swift pages
2. There are 4 function keys of the page below. The refresh button is used to refresh the media file; Left/Right button is used to swift the list pages. Detect button is used to detect the local video file.
3. In the list page,press the return page to exit the application.



Mode Operation for the Playback menu

1. Tap OK to enter the sub-menu when Gyroscope cursor points onto the Playback item.
2. In the page of Playback menu,turn head perspective downwards to show the playback progress bar; Tap the keypad to lock the screen when Gyroscope cursor points onto the playback progress bar.
3. The Playback page has six function options and the progress bar, i.e. Switch pause and playback mode, switch loop mode, adjust brightness and volume,adjust video playback progress, enter menu page, and return to the list page
4. In Playback page,press the return page to previous menu.



Panorama OL

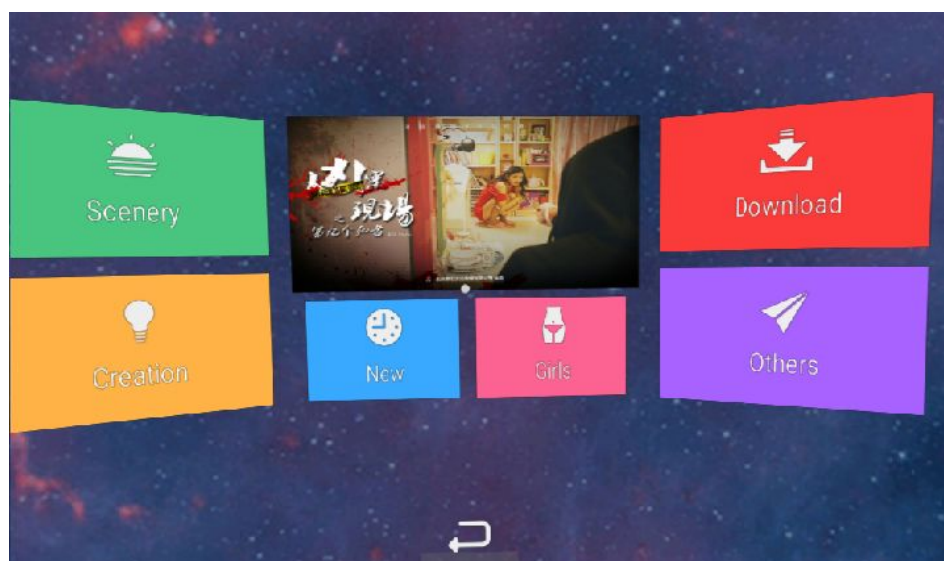
Tap OK to enter the sub-menu when Gyroscope cursor points onto the desired item

This operation are applied in this menu and other functions adjustment of Playback menu;

The keys of the all-in-one device pay auxiliary function

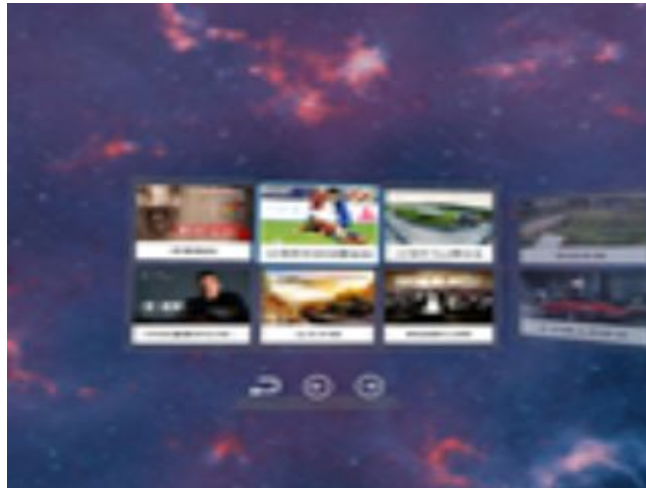
Mode Operation for home page

1. Tap OK to enter the sub-menu when Gyroscope cursor points onto the list page
2. In the list page,press the return page to exit the application.



Mode Operation for the list page

- 1、Tap OK to enter the sub-menu when Gyroscope cursor points onto the list page.
- 2、There are 3 function keys of the page below. Left/Right button is used to swift the list pages. Return button is used to return the previous menu.

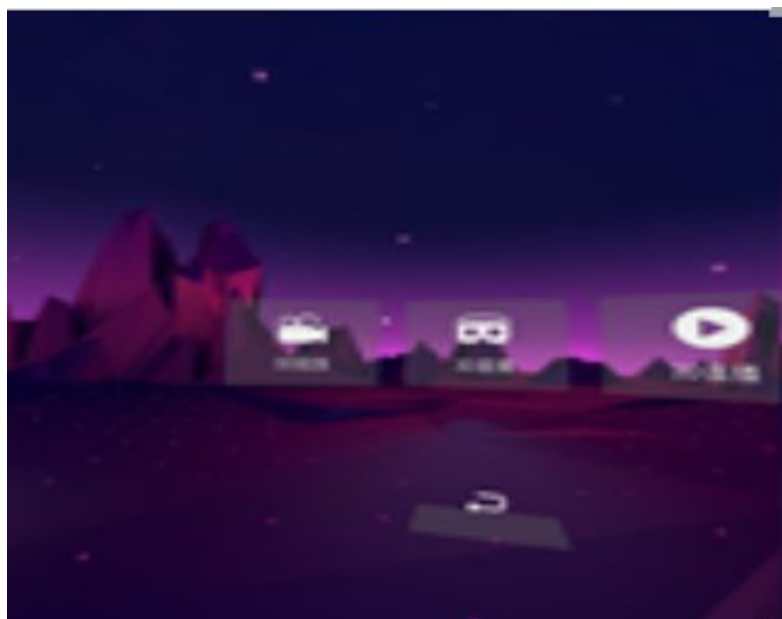


Changba Live

Tap OK to enter the sub-menu when Gyroscope cursor points onto the Changba Live item.
This operation applied to enter the Playback and the other functions adjustment of this menu.
The keys pay auxiliary function.

Mode Operation home menu

1. Tap OK to enter the sub-menu when Gyroscope cursor points onto the desired item.
2. Press the return page to exit the application.



Mode Operation for list menu

1. Tap OK to enter the sub-menu when Gyroscope cursor points onto the desired item.
2. Tap OK to enter the sub-menu when Gyroscope cursor points onto next page. Left/right direction keys on the device or menu are used to swift pages
3. There are 3 function keys of the page below. Left/Right button is used to swift the list pages. Return button is used to return the previous menu.



Mode Operation for Play Menu

1. Tap OK to enter the sub-menu when Gyroscope cursor points onto the desired item.
2. In the page of Playback menu,turn head perspective downwards to show the playback progress bar; Tap the keypad to lock the screen when Gyroscope cursor points onto the playback progress bar.
3. The Playback page has four function options and the progress bar, i.e. Switch pause and playback mode, adjust brightness and volume, and return to the previous page.
In the list page,press the return page to exit the application.
4. In the list page,press the return page to return the previous page.

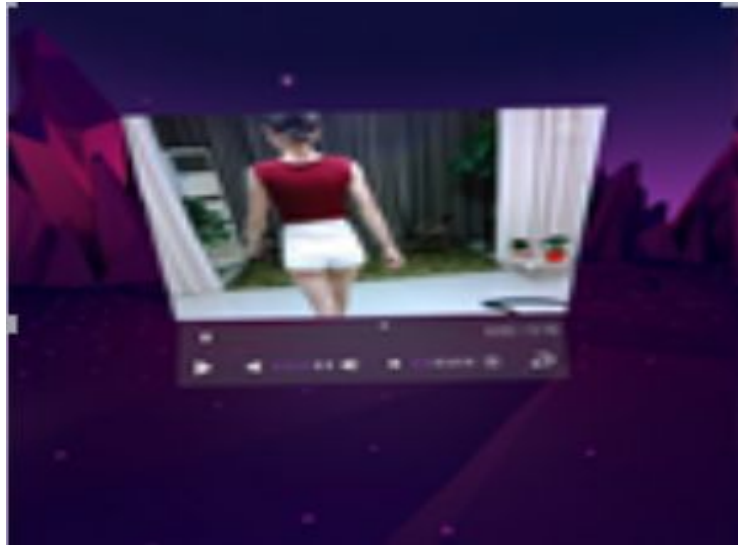
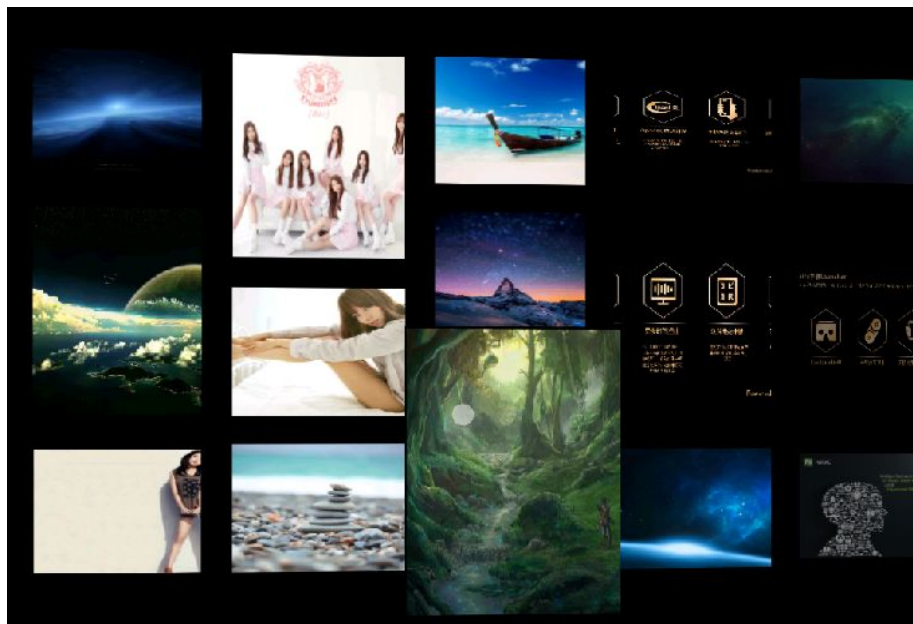


Photo Wall

Tap OK to enter the sub-menu when Gyroscope cursor points onto the Photo Wall item.

Mode Operation of the list page

1. Tap OK key to swift pages when Gyroscope cursor points onto the non-current page.



2. Tap OK key to enter Picture page when Gyroscope cursor points onto the picture.



3. Tap OK key to see next picture in the menu.
4. In the picture page, press the return icon to return the previous page. In Picture Wall, press the return icon to exit the App.

Panorama Image

Tap OK to enter the sub-menu when Gyroscope cursor points onto the desired item.

Mode operation for list page

1. Tap OK to see the picture when Gyroscope cursor points onto the desired item.





2. In the picture page, press the return button to previous menu. Exit the App after pressing the return again.



Applications

Apps Detection

Tap the “local ” icon, and then “”, after “” turns red, select the application, and click the “X” on the top right corner of the application to delete the application.

Language Setting

To change the language, tap setting--General--Language, and then select the desired language

Troubleshooting

Image on the screen is moving randomly

V8 may be subject to artificial magnetic interference from computer, TV, or electronic transmission lines , please avoid using it in the area of magnetic setting.

Cannot start

Please check if the device is out of power for no use in a long time

Security of information

To protect yourself and others from harm or to protect your device from damage, please read all of the following information before use

- Set the device for its intended purpose.
- Do not drop the electrical appliances/devices or collision of them.
- Do not use or store it in dirty areas or surroundings full of dusty.
Dust and sharp objects will affect the use and viewing results.
- Do not allow the connector to contact with conductors, such as: liquids, dust, metal filings and pencil, which may cause a short circuit or corrosion at the connector and cause an explosion, fire or equipment damage.
- Do not bite or suck the device

Children or animals will be choked because of swallowing small parts of the device

- Do not place the device in a surroundings of smoke and fog to avoid damage

Humidity and all types of liquids may damage device parts or electronic circuits

- Do not use the device when an error occurs,;

Do not continue to use after an error occurs. The devices may cause discomfort or injury then.

- Do not use the device in hospitals, airplanes or automobiles or other surroundings affected by interference which will result in damage and meanwhile, incurs injury or property loss.

Protect your hearing and ears when using a headset

- Excessive exposure to loud sounds can cause hearing loss

• Always turn the volume down before plugging headphones into the audio source and use the required minimum volume setting before viewing the video

- Make sure the headset cord is not wrapped around the solid transmission

If the device is broken or damaged, do not use it again.

Broken lens may be harmful to your hands and face

Use manufacturer-approved batteries, chargers, accessories

Users will not be responsible for the use of non-original accessories

Do not disassemble, modify, or repair device

Any changes or modifications to the device is out of manufacturer's warranty.

Please note the followings to clean the device

Do not place batteries or devices on or in-heating devices

Do not squeeze or puncture the device

Qualified technician is allowed to repair the device only

Warning

Incorrectly replacement of battery may incur explosion

Only same type or equivalent type of battery can be replaced to the device

Batteries shall not be exposed to sunlight, such as fire or the excessive heat

FCC Note

changes or modifications not expressly approved by the party responsible for compliance could void the user's authority to operate the equipment.

Note: This equipment has been tested and found to comply with the limits for a Class B digital device, pursuant to Part 15 of the FCC Rules. These limits are designed to provide reasonable protection against harmful interference in a residential installation. This equipment generates, uses, and can radiate radio frequency energy, and if not installed and used in accordance with the instructions, may cause harmful interference to radio communications. However, there is no guarantee that interference will not occur in a particular installation. If this equipment does cause harmful interference to radio or television reception, which can be determined by turning the equipment off and on, the user is encouraged to try to correct the interference by one or more of the following measures:

- Reorient or relocate the receiving antenna.
- Increase the separation between the equipment and receiver.
- Connect the equipment into an outlet on a circuit different from that to which the receiver is connected.
- Consult the dealer or an experienced radio/TV technician for help.