

User Manual

Automobile adjustable muffler remote controller and motor system

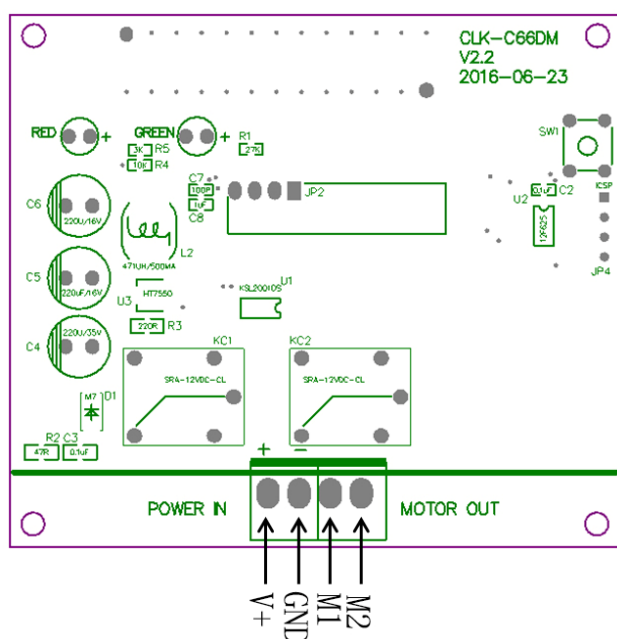
Product model: VK0102-KIT

Version: V1.0

Technical indicators:

- 1 Input voltage: DC12V
- 2 RF frequency: 433.92MHz
- 3 RF working mode: super heterodyne reception
- 4 receiving sensitivity: >97dbm
- 5 remote control distance: 5 meters in the open space
- 6 decoding method: MCU software decoding
- 7 can store the number of remote control: 20
- 8 support for remote control type: learning code
- 9 work mode: point move.
- 10 connection mode: fixed connection post
- 11 switch output: positive and negative motor
- 12 circuit board size: 78.2*68.5*14mm (L * w * h)

Physical map:



Connection description:

- +V: 12V input power
- - GND: 12V input power cathode
- M1, M2: motor output

Three. Operating instructions:**Clear code:**

Step 1: press the button on the control panel.

Second step: when the red LED goes out, that is, the automatic removal of the code of the remote control.

The third step: after the removal of the original study of the code over the remote control is no longer controlled.

Learning to code:

The first step: according to the 1 control panel on the code button, the red LED lights lit.

Second step: wait for the red LED indicator light to press the remote control button.

The third step: the control panel red LED indicator light flashes continuously for 3 times, the system automatically assigns the working mode to move.

Function introduction:

Button "A" to control the motor is turned, the button "B" control motor reversal, Button "C" to control the motor is raise, the button "D" control motor down, the functional model for the point of control.

Matters needing attention:

Do not live operation, should be shut down the power to operate, to detect the use of power after the No.

When the remote control voltage is insufficient, please timely and change the battery (the remote control battery voltage is insufficient, the general remote control distance becomes close).

The use of wireless electronic products should pay attention to avoid the metal mask, large electronic equipment, electromagnetic fields, etc. there is a strong interference source, to avoid the remote control and receiving distance is short or not working properly.

Do not use this electronic products. Non normal use will reduce product performance and life, serious damage to the product will also give you the security risks.

FCC Notice:

This device complies with Part 15 of the FCC Rules. Operation is subject to the following two conditions: (1) This device may not cause harmful interference. (2) This device must accept any interference received, including interference that may cause undesired operation.

NOTE: This equipment has been tested and found to comply with the limits for a Class B digital device, pursuant to Part 15 of the FCC Rules. These limits are designed to provide reasonable protection against harmful interference in a residential installation. This equipment generates uses and can radiate radio frequency energy and, if not installed and used in accordance with the instructions, may cause harmful interference to radio communications. However, there is no guarantee that interference will not occur in a particular installation. If this equipment does cause harmful interference to radio or television reception, which can be determined by turning the equipment off and on, the user is encouraged to try to correct the interference by one or more of the following measures:

- Reorient or relocate the receiving antenna.
- Increase the separation between the equipment and receiver.
- Connect the equipment into an outlet on a circuit different from that to which the receiver is connected.
- Consult the dealer or an experienced radio/TV technician for help.

WARNING: Changes or modifications not expressly approved by the party responsible for compliance could void the user's authority to operate the equipment.