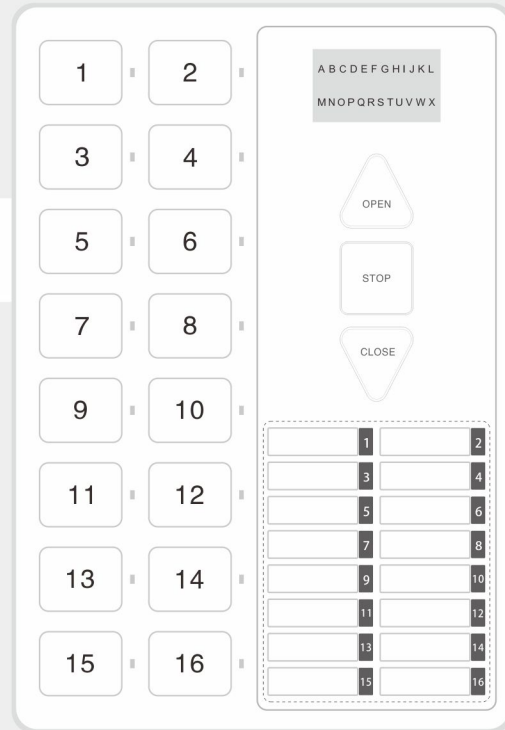


# LCD屏16通道遥控器

## 安装与使用说明书

### ① LCD屏16通道遥控器，界面描述：

1. 正面右上方有一个显示屏，命名为[LCD]
2. 正面左侧有16个按键，为16个通道的选择按键(分别命名为[CH1] ~ [CH16])
3. 正面右侧有3个按键，为控制按键(从上到下分别命名为[OPEN], [STOP], [CLOSE])
4. 背面有一个按键，为设置按键(命名为[SET])



### ② 遥控器设置：

1. 配对ID码：
  - 1.1 长按[SET]按键3秒，[LCD]上会显示<SET>，表示进入设置模式
  - 1.2 选择需要对码的通道号(按键[CH1] ~ [CH16])
  - 1.3 按[STOP]键
  - 1.4 [LCD]会显示发射图标
  - 1.5 配对ID码结束
2. 更改开关方向：
  - 2.1 长按[SET]按键3秒，[LCD]上会显示<SET>，表示进入设置模式
  - 2.2 选择需要更改开关方向的通道号(按键[CH1] ~ [CH16])
  - 2.3 按[OPEN]键
  - 2.4 [LCD]会显示发射图标
  - 2.5 更改开关方向结束
3. 删除ID码：
  - 3.1 长按[SET]按键3秒，[LCD]上会显示<SET>，表示进入设置模式
  - 3.2 选择需要删除ID码的通道号(按键[CH1] ~ [CH16])
  - 3.3 按[CLOSE]键
  - 3.4 [LCD]会显示发射图标
  - 3.5 删除ID码结束
4. 正常控制：
  - 4.1 选择需要控制的通道号(按键[CH1] ~ [CH16])(开机默认通道号是[CH1])
  - 4.2 按控制按键([OPEN]或[STOP]或[CLOSE])
  - 4.3 [LCD]会显示发射图标
  - 4.4 控制结束

### ③ PC端操作：

安装驱动：

1. 进入文件夹.\MultiRemote\Driver, 双击驱动安装文件CH341SER, 出现“图1”所示界面

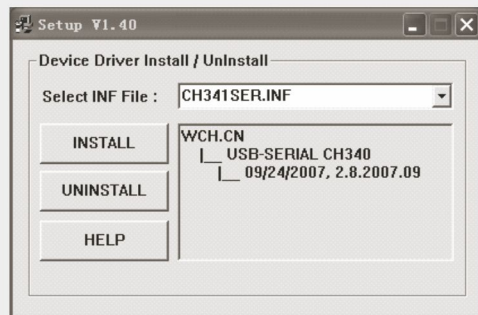


图1

正常操作：

1. 用USB线把PC和16通道设备连接起来
2. 按16通道设备上的任一按键使[LCD]亮起来
3. 打开PC端软件，打开界面如“图2”所示
4. 点击[Connect]按键连接16通道设备
5. 在相应的文本框中输入文本(每个文本框共2行，每行最多12个字符)
6. 点击[Update]按键把设置的文本更新到16通道设备中
7. 设置完成

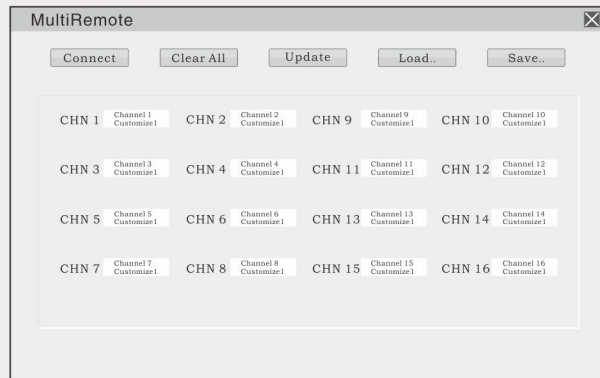


图2

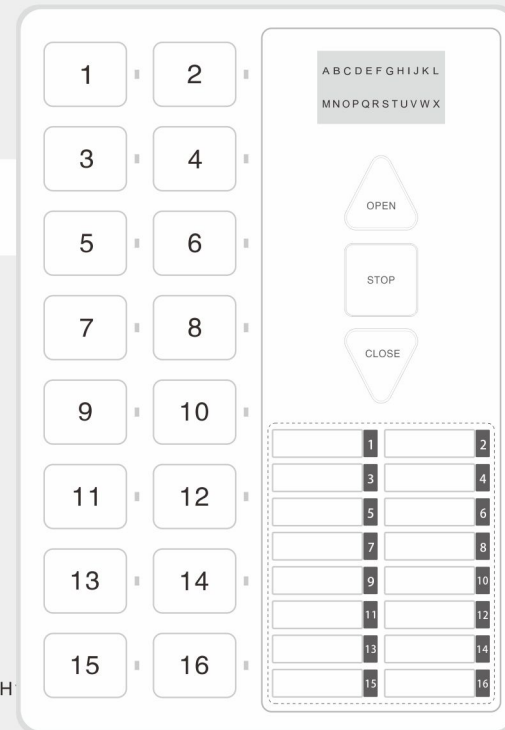
其它按键功能如下：

- [Clear All]: 清除所有文本内容  
[Load..]: 加载设置  
[Save..]: 保存当前设置

# The Function of 16-channel Remote Controller with LCD

### ① 16- channel remote controller which include LCD screen. The description of interface:

1. There is a LCD display at the upper right of the front side.
2. There are 16 buttons at the left of the front side. Which is named CH1 to CH16.
3. There are 3 buttons on the right also, which is the Control Buttons. They are named OPEN, STOP and CLOSE).
4. There is a set button on the back.



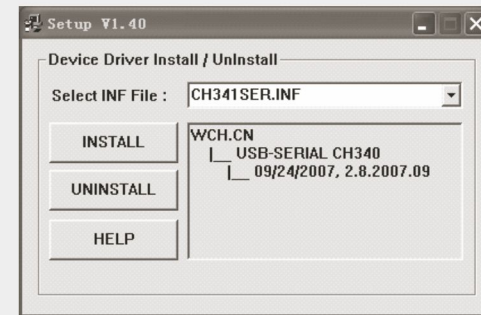
### ② The operation of this device:

1. Matching the ID code
  - 1.1 Clicking the “SET” button 3s.,when it enter set-up mode, the “SET” will appeared on the LED screen.
  - 1.2 Select the channel number which need to code.[clicking button (CH1~CH16)]
  - 1.3 Clicking the “STOP” button
  - 1.4 LCD screen will show the launch icon.
  - 1.5 Matching the ID code is end.
- 2.. Changing the switch direction
  - 2.1 Clicking the “SET” button 3s.,when it enter set-up mode, the “SET” will appeared on the LED screen.
  - 2.2 Select the channel number which need to change the switch direction.[clicking button(CH1~CH16)]
  - 2.3 LCD screen will show the launch icon.
  - 2.4 Changing the switch direction is end.
- 3.Deleting the ID code:
  - 3.1 Clicking the “SET” button 3s.,when it enter set-up mode, the “SET” will appeared on the LED screen.
  - 3.2 Select the channel number which need to delete the ID code.[clicking button(CH1~CH16)]
  - 3.3 Clicking the “CLOSE” button
  - 3.4 LCD screen will show the launch icon.
  - 3.5 Deleting the ID code is end.
- 4.Normal control
  - 4.1 Selecting the channel number which need to control. clicking button(CH1~CH16).The default boot is (CH1)
  - 4.2 Clicking the control button([OPEN] or (STOP) or (CLOSE))
  - 4.3 LCD screen will show the launch icon.
  - 4.4 Control is end

### ③ Operation of PC:

Install drive:

1. Get into the folder:\MultiRemote\Drive, Double click the drive to install file of CH341SER. Then the interface will show as “Picture one” .Next, click “INSTALL” to install in. Just a moment, the installation is end.



Picture 1

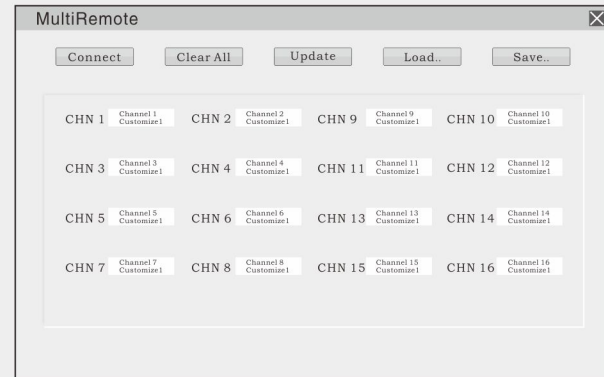
Normal operate:

1. Using the USB line to connect the PC and 16-channel device
2. Clicking any button of the 16 frequency device to make the LED screen light.
3. Open the PC software. The Open interface like the “Picture 2”
4. Clicking the “Connect” button to connect the 16-channel device
5. Inputting the version which need to correspond at the test box(each text box has two rows, each rows no more than 12 characters.
6. Clicking the “Update” button to make the version to update in the 16-channel device.
7. Set up is end

#### FCC Requirement:

This device complies with part 15 of the FCC Rules. Operation is subject to the following two conditions:

- (1) This device may not cause harmful interference, and
  - (2) this device must accept any interference received, including interference that may cause undesired operation.
- changes or modifications not expressly approved by the party responsible for compliance could void the user's authority to operate the equipment.



Picture 2

Function of other button:  
(Clear ALL):Clean all text up  
(Load.):Load setting  
(Save.):save current setting