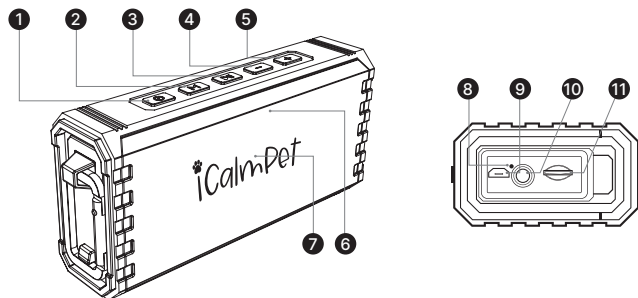


# iCalmPet™

## Ruff 'n Ready™

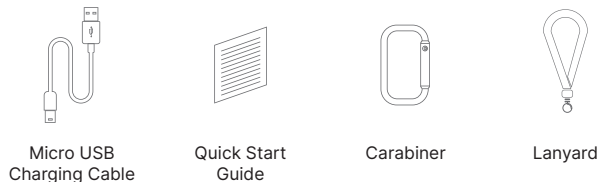
### GETTING STARTED

#### OVERVIEW

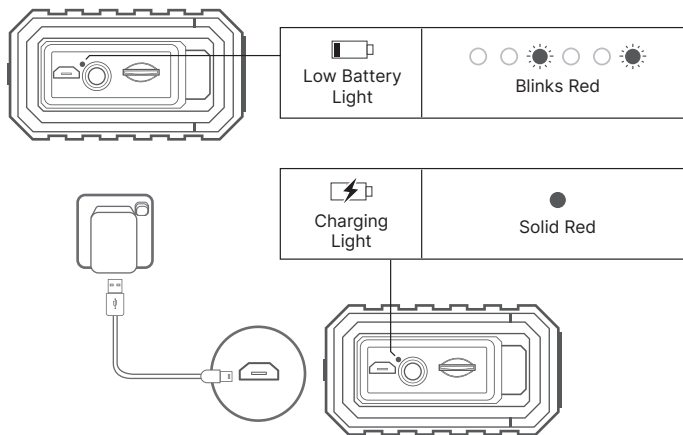


- 1 Power Button
- 2 Mode Button
- 3 Play / Pause Button
- 4 Volume - / Previous Track Button
- 5 Volume + / Next Track Button
- 6 LED Status Indicator
- 7 Integrated Microphone
- 8 LED Charging Indicator
- 9 Charging Port (Micro USB)
- 10 AUX Input Port
- 11 microSD™ Card Slot

#### PACKAGE CONTENTS

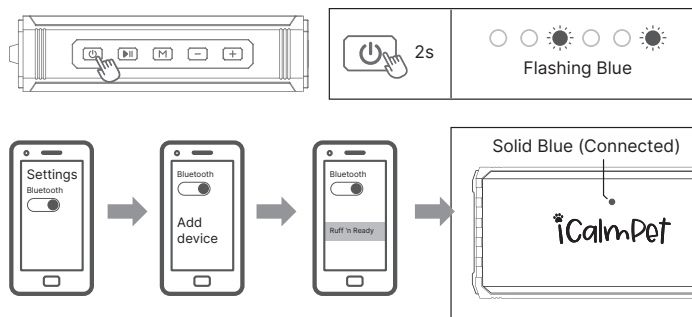


#### CHARGING THE SPEAKER



PORT FLAP: Ensure that the protective silicone cover flap is appropriately sealed for effective waterproofing and to securely safeguard ports.

#### PAIRING THE SPEAKER TO YOUR DEVICE FOR THE FIRST TIME



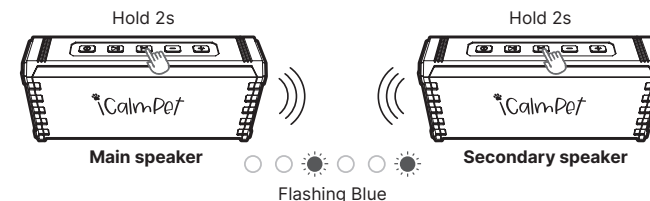
#### CONTROLS

##### Playback Mode

Button	Action	Button	Action
Hold 2s		Press 1s	Skip Track Back / Replay
Press 1s		Press And Hold	Lower Vol.
Press 1s		Press 1s	Skip Track Forward
Hold 2s	Manually Trigger Bluetooth® Pairing Mode	Press And Hold	Raise Vol.

**NOTE:** The iCalmPet Ruff 'n Ready will continue to play until it is powered off or until the battery is fully discharged.

#### TRUE WIRELESS STEREO



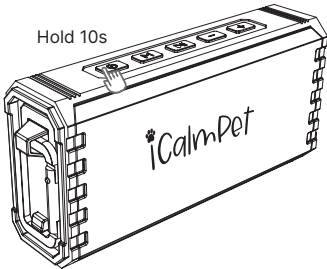
An audio prompt will play from both speakers while searching for one another to pair. A second prompt will play from the main speaker upon successful pairing. Once the True Wireless Stereo pairing is complete, connect your mobile phone to the main speaker via Bluetooth to start playing.

Office Address:  
iCalmPet  
1467 Siskiyou Blvd, #30  
Ashland, OR 97520 USA  
iCalmPet.com  
Tel: 541.482.2134  
Email: CustomerService@iCalmPet.com

PN: 03MF84450000 Rev A

Manufactured by **CREATIVE®**

HARDWARE RESET



The hardware reset function is intended for use in situations where the device has experienced a crash or cannot be powered on. To initiate a hardware reset, press and hold the power button for 10 seconds.

TECHNICAL SPECIFICATIONS

**Frequency Response:** 80–20,000 Hz  
**SNR:** ≥ 75 dB  
**Total playtime:** Up to 10 hours, actual battery life may vary depending on playback volume  
**Bluetooth Version:** *Bluetooth* 5.3  
**Operating Frequency:** 2402–2480 MHz  
**Operating Range:** Up to 10m / 33 ft, measured in open space. Walls and structures may affect range of device  
**Maximum RF Output Power:** 6 dBm

**Supported Bluetooth Profiles:** A2DP (Advanced Audio Distribution Profile), AVRCP (Audio / Video Remote Control Profile), HFP (Hands-free Profile)  
**Supported Codec:** SBC  
**Lithium-ion Battery rating:** 3.7V, 3600 mAh (13.32 Wh)  
**Input rating:** 5V --- 1A  
**Max Operating Temperature:** 45°C

SAFETY & REGULATORY INFORMATION

Ruff 'n Ready ( Model No: MF8445 )

Read this instruction carefully and completely before using the product. Refer to the following information to use your product safely, and to reduce the chance of electric shock, short-circuiting, damage, fire, hearing impairment or other hazards. Improper handling may void the warranty for your product. For more information, read the 60-Day Defective Merchandise Warranty located two pages over.

- To avoid corrosion or deformation, do not expose the product to extreme temperatures (hairdryer, heater, extended exposure to sunlight, etc.) If your product gets wet, dry it immediately.
- If your product is water-resistant, dry immediately if it has been immersed in water or exposed to moisture.
- Charge products with built-in rechargeable batteries at ambient temperatures between 10 and 40°C/50 and 104°F
- When not using the product for extended periods of time, charge its built-in rechargeable battery regularly (about every 3 months).

- Disposal of a battery into fire or a hot oven, or mechanically crushing or cutting of a battery, that can result in an explosion.
- Leaving a battery in an extremely high temperature surrounding environment that can result in an explosion or the leakage of flammable liquid or gas.
- A battery subjected to extremely low air pressure that may result in an explosion or the leakage of flammable liquid or gas.
- Use only attachments/accessories/spare parts supplied or recommended by Creative.
- Clean the product only with a soft, dry cloth.
- Do not dismantle or attempt to repair your product.
- Do not pierce, crush or set fire to your product.
- Keep your product away from strong magnetic objects.
- Keep the product, accessories and packaging parts out of reach of children and pets to prevent accidents. Swallowing and choking hazard.

**Warning on Choking Hazard**  
CHOKING HAZARD – Small Parts  
Not for children under 3yrs.

Notice for USA  
Federal Communication Commission (FCC) Interference Statement

**FCC Part 15:** This equipment has been tested and found to comply with the limits for a Class B digital device, pursuant to Part 15 of the FCC Rules. These limits are designed to provide reasonable protection against harmful interference in a residential installation. This equipment generates, uses and can radiate radio frequency energy and, if not installed and used in accordance with instructions, may cause harmful interference to radio communications. However, there is no guarantee that interference will not occur in a particular installation. If this equipment does cause harmful interference to radio or television reception, which can be determined by turning the equipment off and on, the user is encouraged to try to correct the interference by one or more of the following measures:

- Reorient or relocate the receiving antenna.
- Increase the separation between the equipment and receiver.
- Connect the equipment to an outlet on a circuit different from that to which the receiver is connected.
- Consult the dealer or an experienced radio/TV technician for help.

**CAUTION:**  
This product is intended for use with FCC certified computer equipment. Please check the equipment operating/ installation manual and/or with the equipment manufacturer to verify/confirm if your equipment is suitable prior to the installation or use of the product.

BATTERIES DIRECTIVE

**FOR INTEGRATED BATTERY**  
This product contains a Lithium Ion/polymer battery that should only be removed by an authorized recycling centre. By recycling this product at your local authorized recycling centre, the battery will be removed and recycled separately.

- Additional guidelines for wireless devices**
- The short wave radio frequency signals of a wireless device may impair the operation of other electronic and medical devices.
  - Switch off the device where it is prohibited. Do not use the device in medical facilities, aircraft, refueling points, close to automatic doors, automatic fire alarms or other automatically controlled devices.
  - Keep this device at least 20 cm from pacemakers and other medical devices. Radio waves may impair the operation of pacemakers and other medical devices.

This device complies with part 15 of the FCC Rules. Operation is subjected to the following two conditions:

1. This device may not cause harmful interference, and
2. This device must accept any interference received, including interference that may cause undesired operation.

**CAUTION:** To comply with the limits of the Class B digital device, pursuant to Part 15 of the FCC Rules, this device must be installed with computer equipment certified to comply with Class B limits.

All cables used to connect to the computer and peripherals must be shielded and grounded. Operation with non-certified computers or non-shielded cables may result in interference to radio or television reception.

**MODIFICATION:** Any changes or modifications not expressly approved by the grantee of this device could void the user's authority to operate the device.

**Federal Communication Commission (FCC) Radiation Exposure Statement**  
This equipment complies with FCC radiation exposure limits set forth for an uncontrolled environment. This transmitter must not be co-located or operating in conjunction with any other antenna or transmitter.

The portable device is designed to meet the requirements for exposure to radio waves established by the FCC RF exposure guidelines. These requirements set a SAR limit of 1.6 W/kg averaged over one gram of tissue. The highest SAR value is measured at a distance of 0mm between the radiator and the body.

- For models with embedded battery**
- Do not attempt to remove the embedded battery. The product must be disposed of according to local environmental regulations. For product service information, go to [www.iCalmPet.com](http://www.iCalmPet.com).
  - Do not expose to excessive heat such as sunshine, fire or the like.

**CAUTION:** Risk of explosion if battery is replaced by incorrect types. Replace only with the same or equivalent type.

SUPPLIER'S DECLARATION OF CONFORMITY  
According to CFR Title 47 §2.1077

<b>Importer's Name:</b> Creative Labs, Inc.	<b>has been tested according to the FCC / CISPR22 requirement for Class B devices and found compliant with the following standards:</b>
<b>Importer's Address:</b> 1900 McCarthy Boulevard Suite 103, Milpitas, CA 95035 Tel: (408)428-6600 / (408) 546-6003	<b>EMI/EMC: FCC Part 15 Subpart B &amp; C</b> This device complies with part 15 of the FCC Rules. Operation is subject to the following two conditions: 1. This device may not cause harmful interference, and 2. This device must accept any interference received, including interference that may cause undesirable operation.
declares under its sole responsibility that the product	<b>Supplementary Information:</b> Robert Gilsdorf Director, Business Development and Sales Creative Labs, Inc. 19 May 2023
<b>Trade Name:</b> iCalmPet	
<b>Model Numbers:</b> MF8445	
<b>Product Name:</b> Ruff 'n Ready	

60-DAY DEFECTIVE MERCHANDISE WARRANTY - Ruff 'n Ready

In the event of a defective iCalmPet product purchased directly from iCalmPet.com, a replacement unit will be provided within 60-days of purchase.

- To receive a replacement:**
1. Email us with specific details: [CustomerSupport@iCalmPet.com](mailto:CustomerSupport@iCalmPet.com)
  2. Replacement, return instructions, and process will be provided to you by our Customer Service Representative before you take any action.
    - a. Replacements will be shipped within 5-business days after receipt of returned unit.
    - b. Notification of replacement shipment will be provided via email.
  3. Shipping fees for defective units (i.e., return of defective unit to iCalmPet, and replacement unit to customer) are the responsibility of iCalmPet. Any original upgraded shipping fees will not be refunded.
  4. Issuance of replacements are based on conditions of items returned at the sole discretion of iCalmPet.

- To qualify for our Defective Merchandise Warranty:**
- Your unit cannot have been damaged; it must be returned in like-new condition in original packaging.
  - If you disassemble your iCalmPet Player for any reason, it is no longer returnable.
  - Players must have been purchased directly from iCalmPet.com.
  - Units purchased from a 3rd party are not warrantied under the guidelines stated above. Units that are purchased from any party other than iCalmPet.com may have alternative refund/replacement warranties that differ from iCalmPet. In this instance, you should contact the 3rd party from which you purchased the product.
  - Due to current unpredictability of product supply, iCalmPet reserves the right to substitute any iCalmPet component with a like product of same or higher value.
  - Further information: Visit the iCalmPet.com Returns page ([icampet.com/customer-service/returns](http://icampet.com/customer-service/returns)).

**Please note: Due to the fluidity of product procurement, iCalmPet.com reserves the right to substitute any iCalm component with a like component of same or higher value.**

© 2023 BioAcoustic Research, Inc. All rights reserved. iCalmPet™ and Ruff 'n Ready™ are registered trademarks of BioAcoustic Research, Inc. Creative, the Creative logo are trademarks or registered trademarks of Creative Technology Ltd in the United States and/or other countries. The microSD Logo is a trademark of SD-3C, LLC. The Bluetooth® word mark and logo are owned by the Bluetooth SIG, Inc. and any use of such marks by BioAcoustic Research and Creative Technology Ltd, Inc. is under license. All other trademarks are the property of their respective owners and are hereby recognized as such. All specifications are subject to change without notice. Actual product may differ slightly from images shown. Use of this product is subject to a limited warranty.