



SAR EVALUATION REPORT

| | | | |
|-------------------------|--|---|---------------------|
| Test Report No. | W178R-D021 | | |
| AGR.No. | A177A-472R | | |
| Applicant | LifePrint Products, Inc. | | |
| | 4667 Golden Fothill Parkway, Suite 102 El Dorado Hills, | | |
| | CA 95762 | | |
| Model Name | LP002 | | |
| DUT Type | Lifeprint 3x4.5 Photo Printer | | |
| Application Type | Certification | | |
| FCC ID | 2AJH8LP002 | | |
| Date of Report | Aug 09, 2017 | | |
| Date of Test | Aug 03, 2017 ~ Aug 07, 2017 | | |
| Test Laboratory | ONETECH | | |
| | 43-14, Jinsaegol-gil, Chowol-eup, Gwangju-si, Gyeonggi-do, 12735, | | |
| | Korea | | |
| Procedures | KDB 447498, KDB 865664 | | |
| | IEEE 1528-2013 | | |
| | ANSI/IEEE C95.1, C95.3 | | |
| | FCC CFR §2.1093 | | |
| | RSS-102 Issue 5 | | |
| Max SAR(1g) | 1.170 W/kg | | |
| Test Opinion | Satisfied to FCC requirements | | |
| Report Author | Jungwook Kim |  _____ | Aug 09, 2017 |
| Test Engineer | Youngyong Kim |  _____ | Aug 09, 2017 |

This report details the results of the testing carried out on one sample, the results contained in this test report do not relate to other samples of the same product. The manufacturer should ensure that all products in series production are in conformity with the product sample detailed in this report.

This report may only be reproduced and distribute in full. If the product in this report is used in any configuration other than that detailed in the report, the manufacturer must ensure the new system complies with all relevant standards. Any mention of ONETECH Corp. or testing done by ONETECH Corp. In connection with distribution or use of the product described in this report must be approved by ONETECH Corp. in writing.

TABLE OF CONTENTS

| | |
|---|-----------|
| 1. DUT INFORMATION | 3 |
| 2. INTRODUCTION | 4 |
| 3. SAR MEASUREMENT SETUP | 5 |
| 4. MEASUREMENT UNCERTAINTY | 9 |
| 5. ANSI/IEEE C95.1-2005 RF EXPOSURE LIMIT | 11 |
| 6. SYSTEM AND LIQUID VERIFICATION | 12 |
| 7. SAR MEASUREMENT PROCEDURES | 16 |
| 8. TEST EQUIPMENT LIST | 18 |
| 9. RF CONDUCTED POWER | 20 |
| 10. SAR TEST RESULTS | 22 |
| ANNEX A. SYSTEM VERIFICATION PLOTS | 23 |
| ANNEX B. SAR TEST PLOTS | 25 |
| ANNEX C. PHOTOGRAPHS | 37 |
| ANNEX D. ANTENNA INFORMATION | 41 |
| ANNEX E. PROBE AND DIPOLE CALIBRATION CERTIFICATES | 43 |

1. DUT INFORMATION

| | |
|---------------------------------|--|
| DUT Description | Lifeprint 3x4.5 Photo Printer |
| Model Name | LP002 |
| Multiple Model Name | N/A |
| Serial Number | Identical Prototype |
| Mode of Operation | WLAN |
| TX Frequency Range | 2 412 MHz ~ 2 472 MHz (802.11b/g/n_HT20) 2 402 MHz ~ 2 480 MHz (Bluetooth) |
| Maximum Average Conducted Power | 802.11g : 17.10 dBm (Max. Allowed target power : 16 ± 1.5 dBm) Bluetooth : 5.77 dBm (ch 39) |
| Summary of peak SAR | Head Tissue : 1.170 W/kg Body Tissue : 1.062 W/kg |
| Body Worn Accessory | N/A |
| Antenna Type & Gain | Type : Chip Antenna Gain : 2 400 MHz : 1.0 dBi / 2 442 MHz : 1.8 dBi / 2 485 MHz : 0.5 dBi |
| Antenna Operation | 1 Antenna Transmit |
| Battery | DC 7.4 V / 1 000 mA |

2. INTRODUCTION

The FCC and Industry Canada have adopted the guidelines for evaluating the environmental effects of radio frequency (RF) radiation in ET Docket 93-62 on Aug. 6, 1996 and Health Canada Safety Code 6 to protect the public and workers from the potential hazards of RF emissions due to FCC-regulated portable devices.

The safety limits used for the environmental evaluation measurements are based on the criteria published by the American National Standards Institute (ANSI) for localized specific absorption rate (SAR) in IEEE/ANSI C95.1-1992 Standard for Safety Levels with Respect to Human Exposure to Radio Frequency Electromagnetic Fields, 3 kHz to 300 GHz and Health Canada RF Exposure Guidelines Safety Code 6. The measurement procedure described in IEEE/ANSI C95.3-2002 Recommended Practice for the Measurement of Potentially Hazardous Electromagnetic Fields - RF and Microwave is used for guidance in measuring the Specific Absorption Rate (SAR) due to the RF radiation exposure from the Equipment Under Test (EUT). These criteria for SAR evaluation are similar to those recommended by the International Committee for Non-Ionizing Radiation Protection (ICNIRP) in Biological Effects and Exposure Criteria for Radiofrequency Electromagnetic Fields," Report No. Vol 74. SAR is a measure of the rate of energy absorption due to exposure to an RF transmitting source. SAR values have been related to threshold levels for potential biological hazards.

2.1 SAR Definition

Specific Absorption Rate is defined as the time derivative (rate) of the incremental energy (dU) absorbed by (dissipated in) an incremental mass (dm) contained in a volume element (dV) of a given density (ρ).

$$SAR = \frac{d}{dt} \left(\frac{dW}{dm} \right) = \frac{d}{dt} \left(\frac{dW}{\rho dV} \right)$$

SAR is expressed in units of watts per kilogram (W/kg). SAR can be related to the electric field at a point by

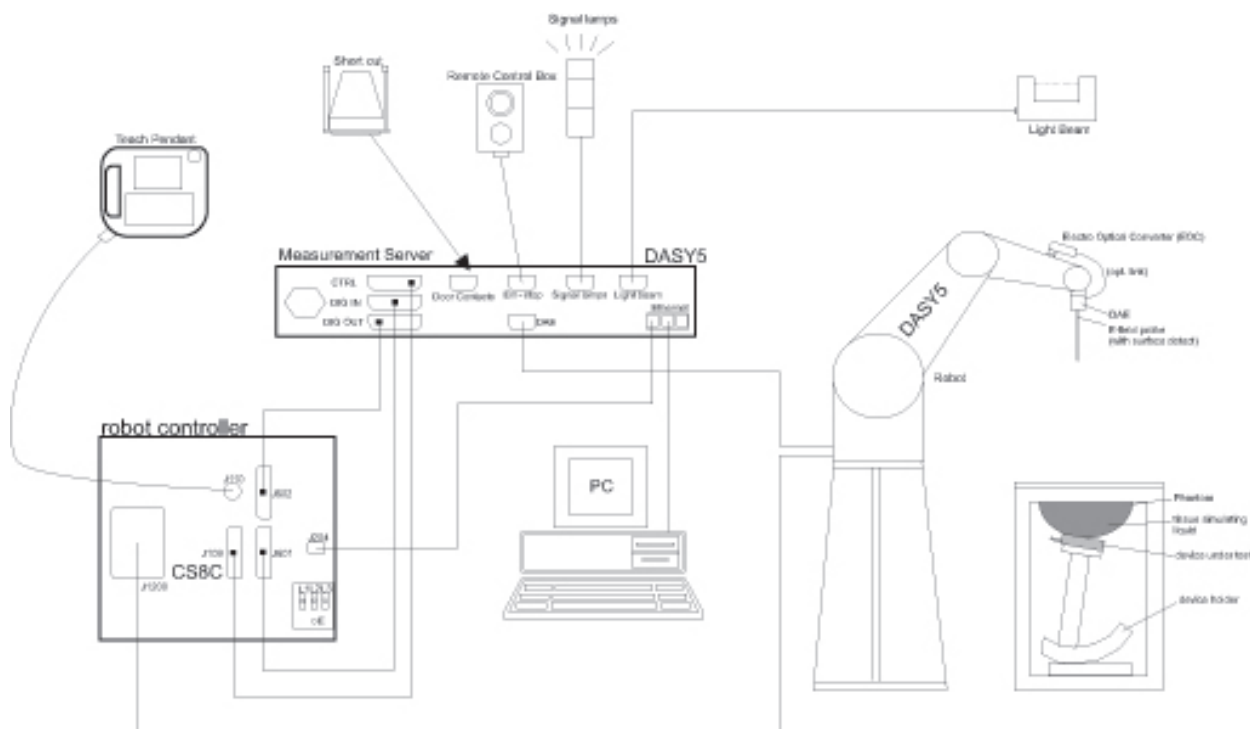
$$SAR = \frac{\sigma |E|^2}{\rho}$$

where:


- σ = conductivity of the tissue (S/m)
- ρ = mass density of the tissue (kg/m³)
- E = rms electric field strength (V/m)

3. SAR MEASUREMENT SETUP


- A standard high precision 6-axis robot with controller, teach pendant and software. An arm extension for accommodating the data acquisition electronics (DAE).
- An isotropic Field probe optimized and calibrated for the targeted measurement.
- Data acquisition electronics (DAE) which performs the signal amplification, signal multiplexing,
- AD-conversion, offset measurements, mechanical surface detection, collision detection, etc. The unit is battery powered with standard or rechargeable batteries. The signal is optically transmitted to the EOC.
- The Electro-optical converter (EOC) performs the conversion from optical to electrical signals for the digital communication to the DAE. To use optical surface detection, a special version of the EOC is required. The EOC signal is transmitted to the measurement server.
- The function of the measurement server is to perform the time critical tasks such as signal filtering, control of the robot operation and fast movement interrupts.
- The Light Beam used is for probe alignment. This improves the (absolute) accuracy of the probe positioning.
- A computer running WinXP or Win7 and the DASY5 software.
- Remote control and teach pendant as well as additional circuitry for robot safety such as warning lamps, etc.
- The phantom, the device holder and other accessories according to the targeted measurement.




3.1 Dasy 5 system

| DASY52 SAR | |
|---|--|
|  | <p>DASY52 SAR is a cost-effective package for demonstration of compliance of mobile phones with specific absorption rate (SAR) limits. The fastest and most accurate scanner on the market, it is fully compatible with all worldwide standards for transmitters operating at the ear or near the body (<200 mm from the skin).</p> |
| <p>Components (typical configuration)</p> | <ul style="list-style-type: none"> 1 TX90XL Stäubli Robot and Controller CS8c incl. Cabinet 1 EOCx Electro Optical Converter (mounted on robot arm) 1 Robot Stand for TX90XL 1 Robot Arm Extension and Adaptors 1 Robot Remote Control 1 LB5 Light Beam Switch for Probe Tooling (incl. LB Adaptor) 1 Light Beam Mounting Plate 1 DASY5 Measurement Server 1 PC Intel Core 2 Dual / 3.16 GHz (or higher) incl. Color-Monitor 23" - 4 GB RAM, 220 GB HD (or larger) / Win7 1 SAM Twin Phantom V5.0 incl. Support DASY5 1 MD4HHTV5 Mounting Device for Hand-Held Transmitters 1 DAEx Data Acquisition Electronics 1 ES3DVx SAR Probe (incl. ConvF for HSL at 900 and 1750 MHz) |

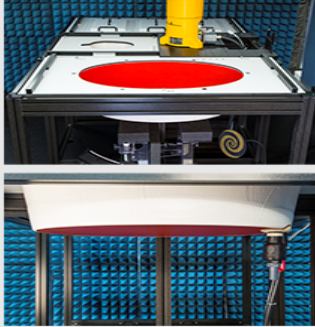
3.2 E-Field Probe (EX3DV4)

| EX3DV4 Smallest Isotropic E-Field Probe for Dosimetric Measurements (Preliminary Specifications) | |
|--|--|
|  | <p>Symmetrical design with triangular core Built-in shielding against static charges PEEK enclosure material (resistant to organic solvents, e.g., DGBE)</p> |
| <p>Calibration</p> | <p>ISO/IEC 17025 calibration service available.</p> |
| <p>Frequency</p> | <p>10 MHz to > 6 GHz Linearity: ± 0.2 dB (30 MHz to 6 GHz)</p> |
| <p>Directivity</p> | <p>± 0.3 dB in TSL (rotation around probe axis) ± 0.5 dB in TSL (rotation normal to probe axis)</p> |
| <p>Dynamic Range</p> | <p>10 µW/g to > 100 mW/g Linearity: ± 0.2 dB (noise: typically < 1 µW/g)</p> |
| <p>Dimensions</p> | <p>Overall length: 337 mm (Tip: 20 mm) Tip diameter: 2.5 mm (Body: 12 mm) Typical distance from probe tip to dipole centers: 1 mm</p> |
| <p>Application</p> | <p>High precision dosimetric measurements in any exposure scenario (e.g., very strong gradient fields); the only probe that enables compliance testing for frequencies up to 6 GHz with precision of better 30%.</p> |

3.3 E-Field Probe(ES3DV3)

| ES3DV3 Isotropic E-Field Probe for Dosimetric Measurements | |
|---|--|
|  | Symmetrical design with triangular core Interleaved sensors Built-in shielding against static charges PEEK enclosure material (resistant to organic solvents, e.g., DGBE) |
| Calibration | ISO/IEC 17025 calibration service available. |
| Frequency | 10 MHz to 4 GHz; Linearity: ± 0.2 dB (30 MHz to 4 GHz) |
| Directivity | ± 0.2 dB in TSL (rotation around probe axis) ± 0.3 dB in TSL (rotation normal to probe axis) |
| Dynamic Range | 5 μ W/g to > 100 mW/g; Linearity: ± 0.2 dB |
| Dimensions | Overall length: 337 mm (Tip: 20 mm) Tip diameter: 3.9 mm (Body: 12 mm) Distance from probe tip to dipole centers: 2.0 mm |
| Application | General dosimetry up to 4 GHz Dosimetry in strong gradient fields Compliance tests of mobile phones |
| Compatibility | DASY3, DASY4, DASY52 SAR and higher, EASY4/MRI |

3.4 ELI Phantom

| ELI Phantom | |
|---|---|
|  | <p>The ELI phantom is used for compliance testing of handheld and body-mounted wireless devices in the frequency range of 30 MHz to 6 GHz. ELI is fully compatible with the IEC 62209-2 standard and all known tissue simulating liquids. ELI has been optimized regarding its performance and can be integrated into our standard phantom tables. A cover prevents evaporation of the liquid. Reference markings on the phantom allow installation of the complete setup, including all predefined phantom positions and measurement grids, by teaching three points. The phantom is compatible with all SPEAG dosimetric probes and dipoles.</p> <p>ELI V5.0 and higher has the same shell geometry and is manufactured from the same material as ELI V4.0, but has reinforced top structure. ELI V6.0, released in August 2014, has the same shell geometry as ELI V4.0 but offers increased longterm stability.</p> |
| Material | Vinyl ester, fiberglass reinforced (VE-GF) |
| Liquid Compatibility | The phantom shell is compatible with SPEAG tissue simulating liquids (sugar and oil based). Use of other liquids may render the phantom warranty void (see note or consult SPEAG support). |
| Shell Thickness | 2.0 \pm 0.2 mm (bottom plate) |
| Dimensions | Major axis: 600 mm Minor axis: 400 mm |
| Filling Volume | approx. 30 liters |
| Support | DASY6: standard-size platform slot DASY52 stand-alone: SPEAG standard phantom table |
| Accessories | Mounting Device and Adaptors |

3.5 Mounting Device



Mounting Device for Laptops

MD4LAPV5 - Mounting Device for Laptops and other Body-Worn Transmitters

In combination with the Twin SAM V5.0/V5.0c or ELI Phantoms, the Mounting Device (Body-Worn) enables testing of transmitter devices according to IEC 62209-2 specifications. The device holder can be locked for positioning at flat phantom section.

Material: Polyoxymethylene (POM), PET-G, Foam

4. MEASUREMENT UNCERTAINTY

Uncertainty of SAR equipment for measurement Body 0.3 GHz to 3 GHz

| No. | | Error Description | Uncertainty Value (1 g) (%) | Uncertainty Value (10 g) (%) | Probe Dist. | Div. | C _i (1 g) | C _i (10 g) | U _i (t) (1 g) | U _i (t) (10 g) | V _i or V _{eff} |
|-----|-----------------------|--|-----------------------------|------------------------------|-------------|------------|----------------------|-----------------------|--------------------------|---------------------------|------------------------------------|
| 1 | U(PR _c) | Probe Calibration | 6.30 | 6.30 | N | 1.00 | 1.00 | 1.00 | 6.30 | 6.30 | ∞ |
| 2 | U(PR _i) | Isotropy | 1.87 | 1.87 | R | $\sqrt{3}$ | 1.00 | 1.00 | 1.08 | 1.08 | ∞ |
| 3 | U(L) | Linearity | 0.60 | 0.60 | R | $\sqrt{3}$ | 1.00 | 1.00 | 0.35 | 0.35 | ∞ |
| 4 | U(PR _{mr}) | Probe modulation response | 2.40 | 2.40 | R | $\sqrt{3}$ | 1.00 | 1.00 | 1.39 | 1.39 | ∞ |
| 6 | U(DL) | Detection Limits | 1.00 | 1.00 | R | $\sqrt{3}$ | 1.00 | 1.00 | 0.58 | 0.58 | ∞ |
| 5 | U(BE) | Boundary effect | 1.00 | 1.00 | R | $\sqrt{3}$ | 1.00 | 1.00 | 0.58 | 0.58 | ∞ |
| 7 | U(RE) | Readout Electronics | 0.30 | 0.30 | N | 1.00 | 1.00 | 1.00 | 0.30 | 0.30 | ∞ |
| 8 | U(T _{sr}) | Response Time | 0.80 | 0.80 | R | $\sqrt{3}$ | 1.00 | 1.00 | 0.46 | 0.46 | ∞ |
| 9 | U(T _{sr}) | Integration Time | 2.60 | 2.60 | R | $\sqrt{3}$ | 1.00 | 1.00 | 1.50 | 1.50 | ∞ |
| 10 | U(A _{amb}) | RF ambient conditions-noise | 3.00 | 3.00 | R | $\sqrt{3}$ | 1.00 | 1.00 | 1.73 | 1.73 | ∞ |
| 11 | U(A _{amb}) | RF ambient conditions-reflections | 3.00 | 3.00 | R | $\sqrt{3}$ | 1.00 | 1.00 | 1.73 | 1.73 | ∞ |
| 12 | U(PR _{sr}) | Probe positioner mech. Restrictions | 0.40 | 0.40 | R | $\sqrt{3}$ | 1.00 | 1.00 | 0.23 | 0.23 | ∞ |
| 13 | U(PR _{sr}) | Probe positioning with respect to phantom shell | 2.90 | 2.90 | R | $\sqrt{3}$ | 1.00 | 1.00 | 1.67 | 1.67 | ∞ |
| 14 | U(PP _{max}) | Post-processing(for max. SAR evaluation) | 2.00 | 2.00 | R | $\sqrt{3}$ | 1.00 | 1.00 | 1.15 | 1.15 | ∞ |
| 15 | U(DL) | Device Holder Uncertainty | 3.60 | 3.60 | N | 1.00 | 1.00 | 1.00 | 3.60 | 3.60 | 5.00 |
| 16 | U(PO _{sr}) | Test sample positioning | 0.92 | 0.94 | N | 1.00 | 1.00 | 1.00 | 0.92 | 0.94 | 9.00 |
| 17 | U(PS) | Power scaling | 0.00 | 0.00 | R | $\sqrt{3}$ | 1.00 | 1.00 | 0.00 | 0.00 | ∞ |
| 18 | U(PD) | Drift of output power(measured SAR drift) | 5.00 | 5.00 | R | $\sqrt{3}$ | 1.00 | 1.00 | 2.89 | 2.89 | ∞ |
| 19 | U(PL) | Phantom Uncertainty | 6.10 | 6.10 | R | $\sqrt{3}$ | 1.00 | 1.00 | 3.52 | 3.52 | ∞ |
| 20 | U(CS _{org}) | Algorithm for correcting SAR for deviations in permittivity and conductivity | 1.90 | 1.90 | N | 1.00 | 1.00 | 0.84 | 1.90 | 1.60 | ∞ |
| 21 | U(EL _{lc}) | Liquid Conductivity (meas.) | 1.39 | 1.26 | N | 1.00 | 0.78 | 0.71 | 1.08 | 0.89 | 5.00 |
| 22 | U(EL _{pc}) | Liquid Permittivity (meas.) | 0.34 | 0.38 | N | 1.00 | 0.23 | 0.26 | 0.08 | 0.10 | 5.00 |
| 23 | U(EL _{sr}) | Liquid conductivity(temperature uncertainty) | 1.87 | 1.71 | R | $\sqrt{3}$ | 0.78 | 0.71 | 0.84 | 0.70 | ∞ |
| 24 | U(EL _{sr}) | Liquid permittivity(temperature uncertainty) | 0.11 | 0.13 | R | $\sqrt{3}$ | 0.23 | 0.26 | 0.01 | 0.02 | ∞ |
| | | Uc(sar) Combined standard uncertainty (%) | | | | | | | 9.82 | 9.73 | 275 |
| | | Extended uncertainty U(%) | | | | | | | 19.63 | 19.47 | |

Uncertainty of SAR equipment for measurement Body 3 GHz to 6 GHz

| No. | | Error Description | Uncertainty Value (1 g) (%) | Uncertainty Value (10 g) (%) | Probe Dist. | Div. | C ₁ (1 g) | C ₁ (10 g) | U _i (g) (1 g) | U _i (g) (10 g) | V _i or V _{eff} |
|-----|-----------------------|--|-----------------------------|------------------------------|-------------|------------|----------------------|-----------------------|--------------------------|---------------------------|------------------------------------|
| 1 | U(PR _c) | Probe Calibration | 6.30 | 6.30 | N | 1.00 | 1.00 | 1.00 | 6.30 | 6.30 | ∞ |
| 2 | U(PR _i) | Isotropy | 1.87 | 1.87 | R | $\sqrt{3}$ | 1.00 | 1.00 | 1.08 | 1.08 | ∞ |
| 3 | U(L) | Linearity | 0.60 | 0.60 | R | $\sqrt{3}$ | 1.00 | 1.00 | 0.35 | 0.35 | ∞ |
| 4 | U(PR _{mr}) | Probe modulation response | 2.40 | 2.40 | R | $\sqrt{3}$ | 1.00 | 1.00 | 1.39 | 1.39 | ∞ |
| 6 | U(DL) | Detection Limits | 1.00 | 1.00 | R | $\sqrt{3}$ | 1.00 | 1.00 | 0.58 | 0.58 | ∞ |
| 5 | U(BE) | Boundary effect | 2.00 | 2.00 | R | $\sqrt{3}$ | 1.00 | 1.00 | 1.15 | 1.15 | ∞ |
| 7 | U(RE) | Readout Electronics | 0.30 | 0.30 | N | 1.00 | 1.00 | 1.00 | 0.30 | 0.30 | ∞ |
| 8 | U(T _{rr}) | Response Time | 0.80 | 0.80 | R | $\sqrt{3}$ | 1.00 | 1.00 | 0.46 | 0.46 | ∞ |
| 9 | U(T _{ir}) | Integration Time | 2.60 | 2.60 | R | $\sqrt{3}$ | 1.00 | 1.00 | 1.50 | 1.50 | ∞ |
| 10 | U(A _{nr}) | RF ambient conditions–noise | 3.00 | 3.00 | R | $\sqrt{3}$ | 1.00 | 1.00 | 1.73 | 1.73 | ∞ |
| 11 | U(A _{rr}) | RF ambient conditions–reflections | 3.00 | 3.00 | R | $\sqrt{3}$ | 1.00 | 1.00 | 1.73 | 1.73 | ∞ |
| 12 | U(PR _{rr}) | Probe positioner mech. Restrictions | 0.80 | 0.80 | R | $\sqrt{3}$ | 1.00 | 1.00 | 0.46 | 0.46 | ∞ |
| 13 | U(PR _{rr}) | Probe positioning with respect to phantom shell | 6.70 | 6.70 | R | $\sqrt{3}$ | 1.00 | 1.00 | 3.87 | 3.87 | ∞ |
| 14 | U(PP _{arr}) | Post-processing(for max. SAR evaluation) | 4.00 | 4.00 | R | $\sqrt{3}$ | 1.00 | 1.00 | 2.31 | 2.31 | ∞ |
| 15 | U(DU) | Device Holder Uncertainty | 3.60 | 3.60 | N | 1.00 | 1.00 | 1.00 | 3.60 | 3.60 | 5.00 |
| 16 | U(PO _{arr}) | Test sample positioning | 1.81 | 1.42 | N | 1.00 | 1.00 | 1.00 | 1.81 | 1.42 | 9.00 |
| 17 | U(Ps) | Power scaling | 0.00 | 0.00 | R | $\sqrt{3}$ | 1.00 | 1.00 | 0.00 | 0.00 | ∞ |
| 18 | U(PD) | Drift of output power(measured SAR drift) | 5.00 | 5.00 | R | $\sqrt{3}$ | 1.00 | 1.00 | 2.89 | 2.89 | ∞ |
| 19 | U(PL) | Phantom Uncertainty | 6.60 | 6.60 | R | $\sqrt{3}$ | 1.00 | 1.00 | 3.81 | 3.81 | ∞ |
| 20 | U(CS _{arr}) | Algorithm for correcting SAR for deviations in permittivity and conductivity | 1.90 | 1.90 | N | 1.00 | 1.00 | 0.84 | 1.90 | 1.60 | ∞ |
| 21 | U(EL _{lc}) | Liquid Conductivity (meas.) | 1.29 | 1.18 | N | 1.00 | 0.78 | 0.71 | 1.01 | 0.84 | 5.00 |
| 22 | U(EL _{lc}) | Liquid Permittivity (meas.) | 0.59 | 0.67 | N | 1.00 | 0.23 | 0.26 | 0.14 | 0.17 | 5.00 |
| 23 | U(EL _{lc}) | Liquid conductivity(temperature uncertainty) | 0.95 | 0.87 | R | $\sqrt{3}$ | 0.78 | 0.71 | 0.43 | 0.36 | ∞ |
| 24 | U(EL _{lc}) | Liquid permittivity(temperature uncertainty) | 0.05 | 0.06 | R | $\sqrt{3}$ | 0.23 | 0.26 | 0.01 | 0.01 | ∞ |
| | | U_c(sar) Combined standard uncertainty (%) | | | | | | | 10.84 | 10.72 | 396 |
| | | Extended uncertainty U(%) | | | | | | | 21.68 | 21.44 | |

5. ANSI/IEEE C95.1-2005 RF EXPOSURE LIMIT

In order for users to be aware of the body-worn operating requirements for meeting RF exposure compliance, operating instructions and cautions statements are included in the user’s manual.

5.1 Uncontrolled Environment

Uncontrolled Environments are defined as locations where there is the exposure of individuals who have no knowledge or control of their exposure. The general population/uncontrolled exposure limits are applicable to situations in which the general public may be exposed or in which persons who are exposed as a consequence of their employment may not be made fully aware of the potential for exposure or cannot exercise control over their exposure. Members of the general public would come under this category when exposure is not employment-related; for example, in the case of a wireless transmitter that exposes persons in its vicinity.

5.2 Controlled Environment

Controlled Environments are defined as locations where there is exposure that may be incurred by persons who are aware of the potential for exposure, (i.e. as a result of employment or occupation). In general, occupational/controlled exposure limits are applicable to situations in which persons are exposed as a consequence of their employment, who have been made fully aware of the potential for exposure and can exercise control over their exposure. This exposure category is also applicable when the exposure is of a transient nature due to incidental passage through a location where the exposure levels may be higher than the general population/uncontrolled limits, but the exposed person is fully aware of the potential for exposure and can exercise control over his or her exposure by leaving the area or by some other appropriate means.

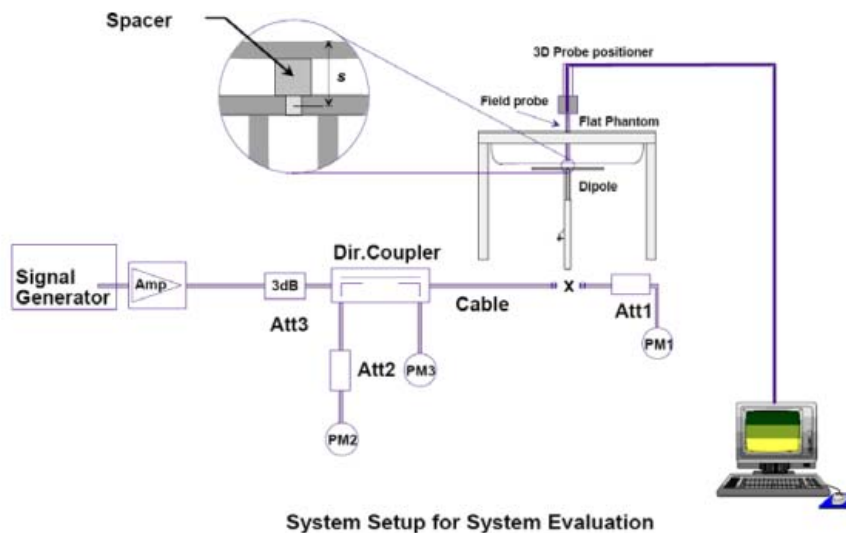
Human Exposure Limits

| | UNCONTROLLED ENVIRONMENT General Population (W/kg) or (mW/g) | CONTROLLED ENVIROMENT Professional Population (W/kg) or (mW/g) |
|--|--|--|
| SPATIAL PEAK SAR ¹ Brain | 1.60 | 8.00 |
| SPATIAL AVERAGE SAR ² Whole Body | 0.08 | 0.40 |
| SPATIAL PEAK SAR ³ Hands, Feet, Ankles, Wrists | 4.00 | 20.00 |

¹ The Spatial Peak value of the SAR averaged over any 1 gram of tissue (defined as a tissue volume in the shape of a cube) and over the appropriate averaging time.
² The Spatial Average value of the SAR averaged over the whole body.
³ The Spatial Peak value of the SAR averaged over any 10 grams of tissue (defined as a tissue volume in the shape of a cube) and over the appropriate averaging time.

6. SYSTEM AND LIQUID VERIFICATION

6.1 System Verification setup



The system performance check verifies that the system operates within its specifications. System and operator errors can be detected and corrected. It is recommended that the system performance check be performed prior to any usage of the system in order to guarantee reproducible results. The system performance check uses normal SAR measurements in a simplified setup with a well characterized source. This setup was selected to give a high sensitivity to all parameters that might fail or vary over time. The system check does not intend to replace the calibration of the components, but indicates situations where the system uncertainty is exceeded due to drift or failure.

In the simplified setup for system evaluation, the DUT is replaced by a calibrated dipole and the power source is replaced by a continuous wave that comes from a signal generator. The calibrated dipole must be placed beneath the flat phantom section of the SAM twin phantom with the correct distance holder. The distance holder should touch the phantom surface with a light pressure at the reference marking and be oriented parallel to the long side of the phantom. The equipment setup is shown below:

1. Signal Generator
2. Amplifier
3. Directional Coupler
4. Power Meter
5. Calibrated Dipole

The output power on dipole port must be calibrated to 30 dBm (1000 mW) before dipole is connected.

Numerical reference SAR values (W/kg) for reference dipole and flat phantom

| 1 | 2 | 3 | 4 | 5 | 6 |
|------------------|----------------------------------|-----------------|------------------|--|--|
| Frequency MHz | Phantom shell thickness mm | 1 g SAR W/kg | 10 g SAR W/kg | Local SAR at surface (above feedpoint) W/kg | Local SAR at surface (y = 2 cm offset from feedpoint) W/kg |
| 300 | 6.3 | 3.02 | 2.04 | 4.40 | 2.10 |
| 300 | 2.0 | 2.85 | 1.94 | 4.14 | 2.00 |
| 450 | 6.3 | 4.92 | 3.28 | 7.20 | 3.20 |
| 450 | 2.0 | 4.58 | 3.05 | 6.75 | 2.98 |
| 750 | 2.0 | 8.49 | 5.55 | 12.6 | 4.59 |
| 835 | 2.0 | 9.56 | 6.22 | 14.1 | 4.90 |
| 900 | 2.0 | 10.9 | 6.99 | 16.4 | 5.40 |
| 1 450 | 2.0 | 29.0 | 16.0 | 50.2 | 6.50 |
| 1 800 | 2.0 | 36.4 | 20.1 | 69.5 | 6.80 |
| 1 900 | 2.0 | 39.7 | 20.5 | 72.1 | 6.60 |
| 1 950 | 2.0 | 40.5 | 20.9 | 72.7 | 6.60 |
| 2 000 | 2.0 | 41.1 | 21.1 | 74.6 | 6.50 |
| 2 450 | 2.0 | 52.4 | 24.0 | 104 | 7.70 |
| 2 585 | 2.0 | 55.9 | 24.4 | 119 | 7.90 |
| 2 600 | 2.0 | 55.3 | 24.6 | 113 | 8.29 |
| 3 000 | 2.0 | 63.8 | 25.7 | 140 | 9.50 |
| 3 500 | 2.0 | 67.1 | 25.0 | 169 | 12.1 |
| 3 700 | 2.0 | 67.4 | 24.2 | 178 | 12.7 |
| 5 000 | 2.0 | 77.9 | 22.1 | 305 | 15.1 |
| 5 200 | 2.0 | 76.5 | 21.6 | 310 | 15.9 |
| 5 500 | 2.0 | 83.3 | 23.4 | 349 | 18.1 |
| 5 800 | 2.0 | 78.0 | 21.9 | 341 | 20.3 |

6.2 Liquid Validation

The dielectric parameters were checked prior to assessment using the DAK dielectric probe kit. The dielectric parameters measured are reported in each correspondent section.

6.3 Recommended Tissue Dielectric Parameters

The head and body tissue dielectric parameters recommended by KDB865664 have been incorporated in the following table.

| Target Frequency (MHz) | Head | | Body | |
|---------------------------|--------------|----------------|--------------|----------------|
| | ϵ_r | σ (S/m) | ϵ_r | σ (S/m) |
| 150 | 52.3 | 0.76 | 61.9 | 0.80 |
| 300 | 45.3 | 0.87 | 58.2 | 0.92 |
| 450 | 43.5 | 0.87 | 56.7 | 0.94 |
| 835 | 41.5 | 0.90 | 55.2 | 0.97 |
| 900 | 41.5 | 0.97 | 55.0 | 1.05 |
| 915 | 41.5 | 0.98 | 55.0 | 1.06 |
| 1450 | 40.5 | 1.20 | 54.0 | 1.30 |
| 1610 | 40.3 | 1.29 | 53.8 | 1.40 |
| 1800 – 2000 | 40.0 | 1.40 | 53.3 | 1.52 |
| 2450 | 39.2 | 1.80 | 52.7 | 1.95 |
| 3000 | 38.5 | 2.40 | 52.0 | 2.73 |
| 5800 | 35.3 | 5.27 | 48.2 | 6.00 |

(ϵ_r = relative permittivity, σ = conductivity and $\rho = 1000 \text{ kg/m}^3$)

6.4 Liquid Confirmation Results

6.4.1 System Verification

| Frequency (MHz) | Tissue Type | Liquid Temp.(°C) | Parameter | Target Value | Measured Value | Deviation | Limit (%) | Date |
|-----------------|-------------|------------------|--------------|--------------|----------------|-----------|-----------|---------------|
| 2 450 | Head | 21.1 | Permittivity | 39.2 | 39.0 | -0.61% | ± 5 | 2017, Aug, 03 |
| | | | Conductivity | 1.80 | 1.79 | -0.61% | ± 5 | |
| 2 450 | Body | 21.3 | Permittivity | 52.7 | 52.5 | -0.37% | ± 5 | 2017, Aug, 07 |
| | | | Conductivity | 1.95 | 1.98 | 1.71% | ± 5 | |

6.4.2 Test Channel

| Frequency (MHz) | Tissue Type | Liquid Temp.(°C) | Parameter | Target Value | Measured Value | Deviation | Limit (%) | Date |
|-----------------|-------------|------------------|--------------|--------------|----------------|-----------|-----------|---------------|
| 2 412 | Head | 21.1 | Permittivity | 39.3 | 39.1 | -0.48% | ± 5 | 2017, Aug, 03 |
| | | | Conductivity | 1.76 | 1.75 | -1.00% | ± 5 | |
| 2 437 | Head | 21.1 | Permittivity | 39.2 | 39.0 | -0.55% | ± 5 | 2017, Aug, 03 |
| | | | Conductivity | 1.79 | 1.77 | -0.76% | ± 5 | |
| 2 462 | Head | 21.1 | Permittivity | 39.2 | 38.9 | -0.64% | ± 5 | 2017, Aug, 03 |
| | | | Conductivity | 1.81 | 1.80 | -0.51% | ± 5 | |
| 2 412 | Body | 21.3 | Permittivity | 52.8 | 52.6 | -0.20% | ± 5 | 2017, Aug, 07 |
| | | | Conductivity | 1.90 | 1.94 | 2.02% | ± 5 | |
| 2 437 | Body | 21.3 | Permittivity | 52.7 | 52.6 | -0.30% | ± 5 | 2017, Aug, 07 |
| | | | Conductivity | 1.93 | 1.97 | 1.85% | ± 5 | |
| 2 462 | Body | 21.3 | Permittivity | 52.7 | 52.5 | -0.42% | ± 5 | 2017, Aug, 07 |
| | | | Conductivity | 1.96 | 2.00 | 1.61% | ± 5 | |

6.5 System Verification Results

| Freq. (MHz) | Tissue Type | Amb. Temp (°C) | Liquid Temp (°C) | Input Power (mW) | Dipole S/N | Probe S/N | Measured SAR 1g | 1W Normalized SAR 1g | 1W Target SAR 1g | Deviation | Date |
|-------------|-------------|----------------|------------------|------------------|------------|-----------|-----------------|----------------------|------------------|-----------|---------------|
| 2 450 | Head | 21.2 | 21.1 | 250 | 923 | 3716 | 13.3 | 53.2 | 51.9 | 2.50% | 2017, Aug, 03 |
| 2 450 | Body | 21.4 | 21.3 | 250 | 923 | 3716 | 13.3 | 53.2 | 52.3 | 1.72% | 2017, Aug, 07 |

7. SAR MEASUREMENT PROCEDURES

Step 1: Power Reference Measurement

The Power Reference Measurement and Power Drift Measurements are for monitoring the power drift of the device under test in the batch process. The Minimum distance of probe sensors to surface determines the closest measurement point to phantom surface. The minimum distance of probe sensors to surface is 2 mm. This distance cannot be smaller than the Distance of sensor calibration points to probe tip as defined in the probe properties.

Step 2: Area Scan

The Area Scan is used as a fast scan in two dimensions to find the area of high field values, before doing a fine measurement around the hot spot. The sophisticated interpolation routines implemented in DASYS software can find the maximum locations even in relatively coarse grids. When an Area Scan has measured all reachable points, it computes the field maximal found in the scanned area, within a range of the global maximum. The range (in dB) is specified in the standards for compliance testing.

For example, a 2 dB range is required in IEEE Standard 1528 and IEC 62209 standards, whereby 3 dB is a requirement when compliance is assessed in accordance with the ARIB standard (Japan). If only one Zoom Scan follows the Area Scan, then only the absolute maximum will be taken as reference. For cases where multiple maximums are detected, the number of Zoom Scans has to be increased accordingly.

Step 3: Zoom Scan

Zoom Scans are used to assess the peak spatial SAR values within a cubic averaging volume containing 1 g and 10 g of simulated tissue. The Zoom Scan measures 5x5x7 points within a cube whose base faces are centered on the maxima found in a preceding area scan job within the same procedure. When the measurement is done, the Zoom Scan evaluates the averaged SAR for 1 g and 10 g and displays these values next to the job's label.

Step 4: Power drift measurement

The Power Drift Measurement measures the field at the same location as the most recent power reference measurement within the same procedure, and with the same settings. The Power Drift Measurement gives the field difference in dB from the reading conducted within the last Power Reference Measurement. This allows a user to monitor the power drift of the device under test within a batch process. The measurement procedure is the same as Step 1.

Step 5: Z-Scan

The Z Scan measures points along a vertical straight line. The line runs along the Z-axis of a one dimensional grid. In order to get a reasonable extrapolation, the extrapolated distance should not be larger than the step size in Z-direction.

* Z Scan Report on Liquid Measure the height ANNEX C. Liquid Depth photo to replace

| | | ≤ 3 GHz | > 3 GHz |
|--|------------------------------------|--|---|
| Maximum distance from closest measurement point (geometric center of probe sensors) to phantom surface | | 5 ± 1 mm | $\frac{1}{2} \cdot \delta \cdot \ln(2) \pm 0.5$ mm |
| Maximum probe angle from probe axis to phantom surface normal at the measurement location | | $30^\circ \pm 1^\circ$ | $20^\circ \pm 1^\circ$ |
| Maximum area scan spatial resolution: $\Delta x_{Area}, \Delta y_{Area}$ | | ≤ 2 GHz: ≤ 15 mm 2 – 3 GHz: ≤ 12 mm | 3 – 4 GHz: ≤ 12 mm 4 – 6 GHz: ≤ 10 mm |
| | | When the x or y dimension of the test device, in the measurement plane orientation, is smaller than the above, the measurement resolution must be \leq the corresponding x or y dimension of the test device with at least one measurement point on the test device. | |
| Maximum zoom scan spatial resolution: $\Delta x_{Zoom}, \Delta y_{Zoom}$ | | ≤ 2 GHz: ≤ 8 mm 2 – 3 GHz: ≤ 5 mm* | 3 – 4 GHz: ≤ 5 mm* 4 – 6 GHz: ≤ 4 mm* |
| Maximum zoom scan spatial resolution, normal to phantom surface | uniform grid: $\Delta z_{Zoom}(n)$ | ≤ 5 mm | 3 – 4 GHz: ≤ 4 mm 4 – 5 GHz: ≤ 3 mm 5 – 6 GHz: ≤ 2 mm |
| | graded grid | $\Delta z_{Zoom}(1)$: between 1 st two points closest to phantom surface | ≤ 4 mm |
| | | $\Delta z_{Zoom}(n>1)$: between subsequent points | $\leq 1.5 \cdot \Delta z_{Zoom}(n-1)$ |
| Minimum zoom scan volume | x, y, z | ≥ 30 mm | 3 – 4 GHz: ≥ 28 mm 4 – 5 GHz: ≥ 25 mm 5 – 6 GHz: ≥ 22 mm |
| <p>Note: δ is the penetration depth of a plane-wave at normal incidence to the tissue medium; see draft standard IEEE P1528-2011 for details.</p> <p>* When zoom scan is required and the <i>reported</i> SAR from the area scan based <i>1-g SAR estimation</i> procedures of KDB 447498 is ≤ 1.4 W/kg, ≤ 8 mm, ≤ 7 mm and ≤ 5 mm zoom scan resolution may be applied, respectively, for 2 GHz to 3 GHz, 3 GHz to 4 GHz and 4 GHz to 6 GHz.</p> | | | |

8. TEST EQUIPMENT LIST

| Manufacturer | Model | Serial No. | CaL.Due | Used |
|--------------|-----------------------------|-----------------|------------|------|
| STAUBLI | RX90XL | F07/56X0A1/A/01 | N/A | V |
| STAUBLI | CS8C Speag TX90XL | F07/56X0A1/C/01 | N/A | V |
| SPEAG | SE UMS 011 AA | 1019 | N/A | V |
| STAUBLI | RX90BL | F01/5J92A1/A/01 | N/A | |
| STAUBLI | CS7MBsp RX90BL | F01/5J92A1/C/01 | N/A | |
| SPEAG | SE UMS 001 BC | 1164 | N/A | |
| STAUBLI | SP1 | D 211 421 02 | N/A | V |
| STAUBLI | Manual Control III Operator | D 221 340 01 | N/A | |
| Di-Soric | LB5 | 80 | N/A | V |
| Di-Soric | LB2 | 270 | N/A | |
| SPEAG | Twin Phantom | TP-1069 | N/A | |
| SPEAG | Twin Phantom | TP-1086 | N/A | |
| SPEAG | Twin Phantom | TP-1112 | N/A | |
| SPEAG | Twin Phantom | TP-1155 | N/A | |
| SPEAG | ELI4 Phantom | 1030 | N/A | |
| SPEAG | ELI4 Phantom V8.0 | TP-2056 | N/A | V |
| SPEAG | Triple Phantom | 1119 | N/A | |
| SPEAG | Mounting Device | N/A | N/A | V |
| SPEAG | Mounting Device | SM LH1 001 AC | N/A | |
| Agilent | 85033E | N/A | N/A | V |
| SPEAG | DAE4 | 444 | 11/22/2017 | V |
| SPEAG | DAE3 | 383 | 03/16/2018 | |
| SPEAG | DAE4 | 663 | 07/18/2018 | |
| SPEAG | EX3DV4 | 3666 | 05/29/2018 | |
| SPEAG | ES3DV3 | 3171 | 07/20/2018 | |
| SPEAG | EX3DV4 | 3716 | 11/22/2017 | V |
| SPEAG | D835V2 | 4d172 | 07/20/2018 | |
| SPEAG | D1750V2 | 1122 | 07/21/2018 | |
| SPEAG | D1950V2 | 1156 | 07/28/2018 | |
| SPEAG | D2450V2 | 923 | 11/17/2017 | V |
| SPEAG | D5GHzV2 | 1094 | 11/19/2017 | |
| SPEAG | DAK-3.5 | 1140 | 11/29/2017 | V |
| HP | 8665B | 3744A01333 | 09/25/2017 | V |
| EMPOWER | BBS3Q7ELU-2001 | 1009D/C0105 | 09/25/2017 | V |
| VARIAN | VZC6961K11212 | 6673 | 09/25/2017 | |
| HP | 778D | 12679 | 09/25/2017 | |
| Agilent | 772D | 2839A01119 | 09/25/2017 | V |
| Agilent | E4419B | MY41291366 | 09/25/2017 | V |
| HP | 437B | 3125U25121 | 09/25/2017 | V |
| HP | 8481H | 3318A18722 | 09/25/2017 | V |
| HP | 8481H | 3318A17600 | 09/25/2017 | V |
| HP | 8481A | 1550A14928 | 09/25/2017 | V |
| WAINWRIGHT | WLJS1500-6EF | 1 | 09/26/2017 | |
| WAINWRIGHT | WLJS3000-6EF | 1 | 09/26/2017 | |

| | | | | |
|---------------------|-----------------|------------|------------|---|
| Agilent | E8357A | US41070399 | 09/25/2017 | V |
| LKM Electronic Gmbh | DTM3000-special | 3247 | 09/28/2017 | V |
| CAS | TE-201 | 14011777-2 | 09/28/2017 | |
| CAS | TE-201 | 14011777-1 | 09/28/2017 | V |
| Bird | 50-6A-MFN-30 | 14100882-1 | 09/25/2017 | V |
| Bird | 50-6A-MFN-30 | 14100882-2 | 09/25/2017 | |

9. RF CONDUCTED POWER

9.1 802.11b

| Mode | Freq. (MHz) | CH | Conducted Power (dBm) | | | | Tolerance (dBm) |
|---------|-------------|----|-----------------------|-------|-------|-------|-----------------|
| | | | Data Rate (Mbps) | | | | |
| | | | 1 | 2 | 5.5 | 11 | |
| 802.11b | 2 412 | 1 | 16.90 | 16.95 | 16.66 | 16.50 | 16.0 ± 1.5 |
| | 2 437 | 6 | 16.83 | 16.88 | 16.62 | 16.52 | |
| | 2 462 | 11 | 16.88 | 16.94 | 16.63 | 16.50 | |

9.2 802.11g

| Mode | Freq. (MHz) | CH | Conducted Power (dBm) | | | | | | | | Tolerance (dBm) |
|---------|-------------|----|-----------------------|-------|-------|-------|-------|-------|-------|-------|-----------------|
| | | | Data Rate (Mbps) | | | | | | | | |
| | | | 6 | 9 | 12 | 18 | 24 | 36 | 48 | 54 | |
| 802.11g | 2 412 | 1 | 17.10 | 16.92 | 16.80 | 16.53 | 15.91 | 14.63 | 13.47 | 12.54 | 16.0 ± 1.5 |
| | 2 437 | 6 | 17.04 | 16.93 | 16.85 | 16.60 | 15.87 | 14.65 | 13.50 | 12.46 | |
| | 2 462 | 11 | 17.03 | 16.93 | 16.80 | 16.54 | 15.90 | 14.64 | 13.52 | 12.50 | |

9.3 802.11n HT20

| Mode | Freq. (MHz) | CH | Conducted Power (dBm) | | | | | | | | Tolerance (dBm) |
|--------------|-------------|----|-----------------------|-------|-------|-------|-------|-------|-------|-------|-----------------|
| | | | Data Rate (Mbps) | | | | | | | | |
| | | | MCS0 | MCS1 | MCS2 | MCS3 | MCS4 | MCS5 | MCS6 | MCS7 | |
| 802.11n HT20 | 2 412 | 1 | 15.70 | 15.32 | 15.11 | 14.93 | 14.54 | 14.20 | 13.33 | 11.36 | 16.0 ± 1.5 |
| | 2 437 | 6 | 15.62 | 15.40 | 15.19 | 14.95 | 14.52 | 14.24 | 13.33 | 11.30 | |
| | 2 462 | 11 | 15.70 | 15.39 | 15.13 | 14.98 | 14.57 | 14.26 | 13.31 | 11.36 | |

9.4 Bluetooth

BDR

| Mode | Freq. (MHz) | CH | DH1 | DH3 | DH5 | Tolerance (dBm) |
|----------|-------------|----|------|------|------|-----------------|
| BDR (1M) | 2402 | 0 | 0.86 | 4.10 | 4.77 | 4.50 ± 1.5 |
| | 2441 | 39 | 1.87 | 5.10 | 5.77 | |
| | 2480 | 78 | 1.72 | 4.96 | 5.63 | |

EDR

| Mode | Freq. (MHz) | CH | DH1 | DH3 | DH5 | Tolerance (dBm) |
|----------|-------------|----|-------|------|------|-----------------|
| EDR (2M) | 2402 | 0 | -2.61 | 0.20 | 0.83 | 1.50 ± 1.5 |
| | 2441 | 39 | -1.10 | 1.72 | 2.32 | |
| | 2480 | 78 | -1.30 | 1.53 | 2.16 | |
| EDR (3M) | 2402 | 0 | -2.60 | 0.19 | 0.82 | |
| | 2441 | 39 | -1.10 | 1.70 | 2.32 | |
| | 2480 | 78 | -1.25 | 1.53 | 2.17 | |

10.SAR TEST RESULTS

< 802.11g 6 Mbps Head Tissue SAR_0mm distance from Phantom >

| Mode | Position | Freq. (MHz) | CH | Conducted Power (dBm) | Max. Allowed Power (dBm) | Scaling Factor | Measured 1g SAR (W/kg) | Reported SAR (W/kg) |
|----------|----------|-------------|----|-----------------------|--------------------------|----------------|------------------------|---------------------|
| 802.11g | Bottom | 2 412 | 1 | 17.10 | 17.50 | 1.10 | 0.643 | 0.705 |
| | | 2 437 | 6 | 17.04 | 17.50 | 1.11 | 0.818 | 0.909 |
| | | 2 462 | 11 | 17.03 | 17.50 | 1.11 | 1.020 | 1.137 |
| | Front | 2 437 | 6 | 17.04 | 17.50 | 1.11 | 0.135 | 0.150 |
| | Back | 2 437 | 6 | 17.04 | 17.50 | 1.11 | 0.297 | 0.330 |
| | Right | 2 437 | 6 | 17.04 | 17.50 | 1.11 | 0.114 | 0.127 |
| Repeated | Bottom | 2 462 | 11 | 17.03 | 17.50 | 1.11 | 1.050 | 1.170 |

< 802.11g 6 Mbps Body Tissue SAR_0mm distance from Phantom >

| Mode | Position | Freq. (MHz) | CH | Conducted Power (dBm) | Max. Allowed Power (dBm) | Scaling Factor | Measured 1g SAR (W/kg) | Reported SAR (W/kg) |
|----------|----------|-------------|----|-----------------------|--------------------------|----------------|------------------------|---------------------|
| 802.11g | Bottom | 2 412 | 1 | 17.10 | 17.50 | 1.10 | 0.577 | 0.633 |
| | | 2 437 | 6 | 17.04 | 17.50 | 1.11 | 0.747 | 0.830 |
| | | 2 462 | 11 | 17.03 | 17.50 | 1.11 | 0.953 | 1.062 |
| | Front | 2 437 | 6 | 17.04 | 17.50 | 1.11 | 0.124 | 0.138 |
| | Back | 2 437 | 6 | 17.04 | 17.50 | 1.11 | 0.281 | 0.312 |
| | Right | 2 437 | 6 | 17.04 | 17.50 | 1.11 | 0.098 | 0.109 |
| Repeated | Bottom | 2 462 | 11 | 17.03 | 17.50 | 1.11 | 0.934 | 1.041 |

ANNEX A. SYSTEM VERIFICATION PLOTS

< 2 450 MHz Head Tissue / Date : Aug 03, 2017 >

DUT: Dipole 2450 MHz; Type: D2450V2; Serial: D2450V2 - SN:923

Communication System: CW; Frequency: 2450 MHz; Duty Cycle: 1:1

Medium parameters used: $f = 2450$ MHz; $\sigma = 1.79$ mho/m; $\epsilon_r = 39$; $\rho = 1000$ kg/m³

Phantom section: Flat Section

DASY5 Configuration:

- Probe: EX3DV4 - SN3716; ConvF(7.3, 7.3, 7.3); Calibrated: 2016-11-22
- Sensor-Surface: 2mm (Mechanical Surface Detection)
- Electronics: DAE4 Sn444; Calibrated: 2016-11-22
- Phantom: ELI V8.0; Type: QD OVA 004 AA; Serial: 2056
- Measurement SW: DASY5, V5.0 Build 125; SEMCAD X Version 13.4 Build 125

2 450 MHz SPC/Area Scan (71x101x1): Measurement grid: dx=12mm, dy=12mm

Maximum value of SAR (interpolated) = 20.4 mW/g

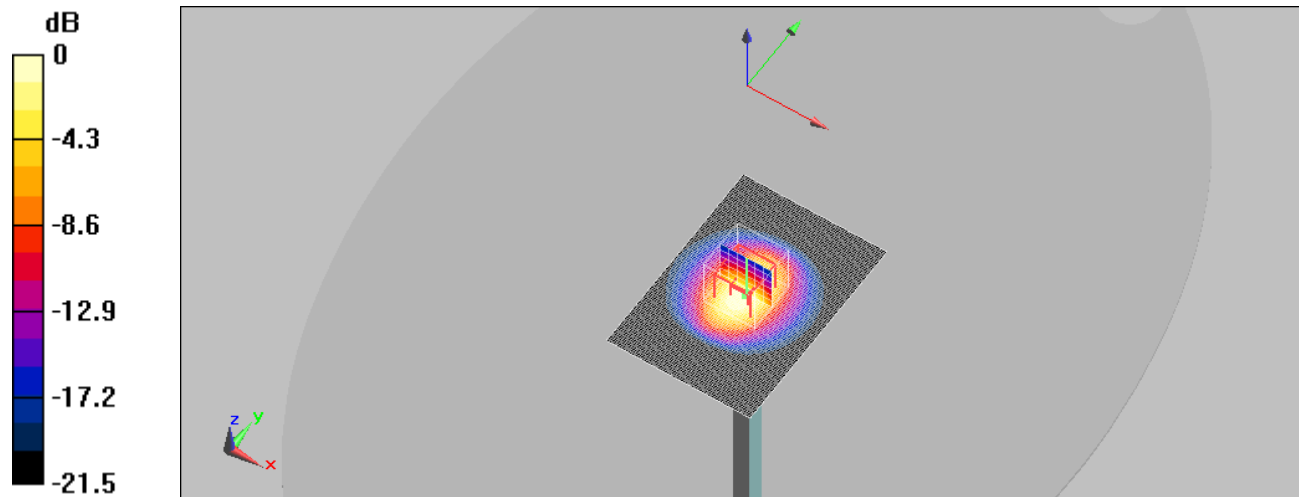
2 450 MHz SPC/Zoom Scan (7x7x7)/Cube 0: Measurement grid: dx=5mm, dy=5mm, dz=5mm

Reference Value = 105.8 V/m; Power Drift = 0.017 dB

Peak SAR (extrapolated) = 26.7 W/kg

SAR(1 g) = 13.3 mW/g; SAR(10 g) = 6.27 mW/g

Maximum value of SAR (measured) = 19.9 mW/g



0 dB = 19.9mW/g

< 2 450 MHz Body Tissue / Date : Aug 07, 2017 >

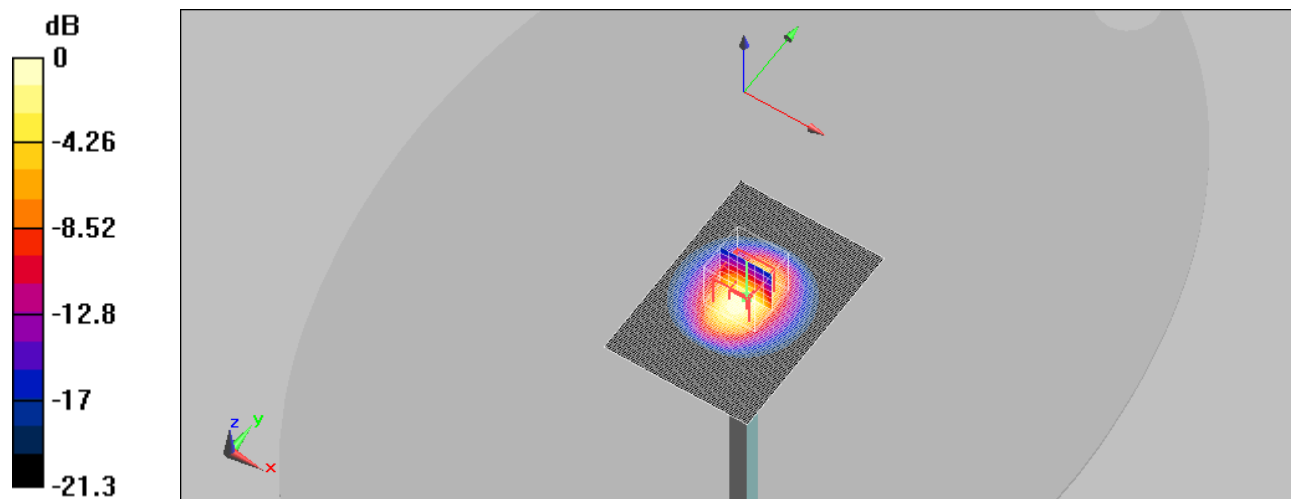
DUT: Dipole 2450 MHz; Type: D2450V2; Serial: D2450V2 - SN:923
Communication System: CW; Frequency: 2450 MHz;Duty Cycle: 1:1
Medium parameters used: f = 2450 MHz; σ = 1.98 mho/m; ϵ_r = 52.5; ρ = 1000 kg/m3
Phantom section: Flat Section

DASY5 Configuration:

- Probe: EX3DV4 - SN3716; ConvF(7.2, 7.2, 7.2); Calibrated: 2016-11-22
- Sensor-Surface: 2mm (Mechanical Surface Detection)
- Electronics: DAE4 Sn444; Calibrated: 2016-11-22
- Phantom: ELI V8.0; Type: QD OVA 004 AA; Serial: 2056
- Measurement SW: DASY5, V5.0 Build 125; SEMCAD X Version 13.4 Build 125

2 450 MHz SPC/Area Scan (71x101x1): Measurement grid: dx=12mm, dy=12mm
Maximum value of SAR (interpolated) = 20.7 mW/g

2 450 MHz SPC/Zoom Scan (7x7x7)/Cube 0: Measurement grid: dx=5mm, dy=5mm, dz=5mm
Reference Value = 99.2 V/m; Power Drift = 0.033 dB
Peak SAR (extrapolated) = 26.9 W/kg
SAR(1 g) = 13.3 mW/g; SAR(10 g) = 6.27 mW/g
Maximum value of SAR (measured) = 20.1 mW/g



0 dB = 20.1mW/g

ANNEX B. SAR TEST PLOTS

< 802.11g_Head Tissue_6 Mbps_CH1_Bottom_0mm / Date :Aug 03, 2017 >

DUT: LP002; Type: Sample; Serial: Not Specified

Communication System: 802.11 b/g/n; Frequency: 2412 MHz;Duty Cycle: 1:1

Medium parameters used (interpolated): $f = 2412$ MHz; $\sigma = 1.75$ mho/m; $\epsilon_r = 39.1$; $\rho = 1000$ kg/m³

Phantom section: Flat Section

DASY5 Configuration:

- Probe: EX3DV4 - SN3716; ConvF(7.3, 7.3, 7.3); Calibrated: 2016-11-22
- Sensor-Surface: 2mm (Mechanical Surface Detection)
- Electronics: DAE4 Sn444; Calibrated: 2016-11-22
- Phantom: ELI V8.0; Type: QD OVA 004 AA; Serial: 2056
- Measurement SW: DASY5, V5.0 Build 125; SEMCAD X Version 13.4 Build 125

802.11g_ch 1_6 Mbps_Bottom/Area Scan (101x51x1): Measurement grid: dx=12mm, dy=12mm

Maximum value of SAR (interpolated) = 0.666 mW/g

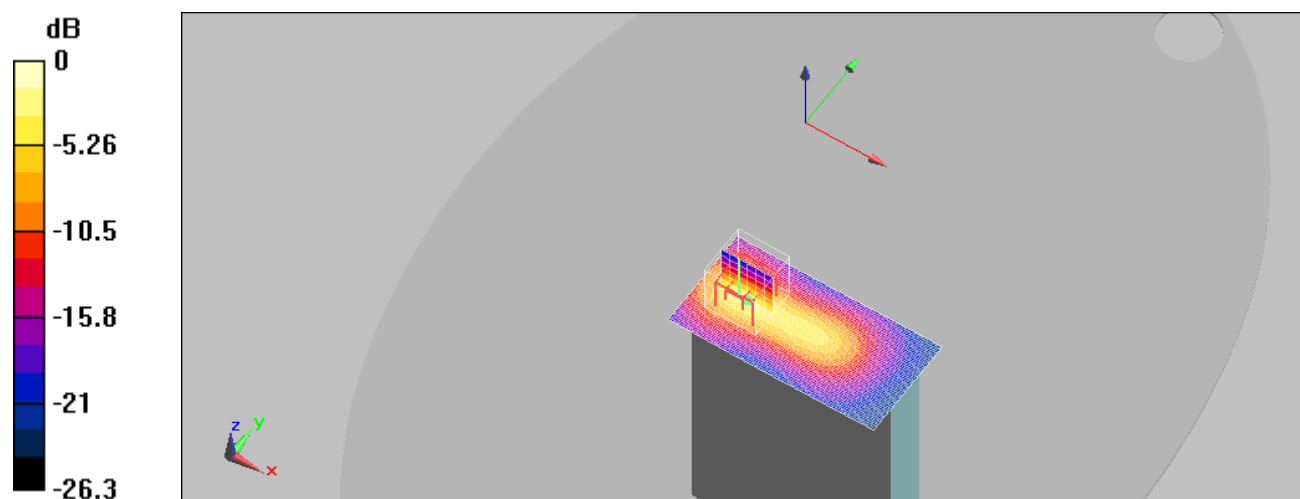
802.11g_ch 1_6 Mbps_Bottom/Zoom Scan (7x7x7)/Cube 0: Measurement grid: dx=5mm, dy=5mm, dz=5mm

Reference Value = 16.8 V/m; Power Drift = 0.00687 dB

Peak SAR (extrapolated) = 1.77 W/kg

SAR(1 g) = 0.643 mW/g; SAR(10 g) = 0.232 mW/g

Maximum value of SAR (measured) = 1.22 mW/g



0 dB = 1.22mW/g

< 802.11g_Head Tissue_6 Mbps_CH6_Bottom_0mm / Date :Aug 03, 2017 >

DUT: LP002; Type: Sample; Serial: Not Specified

Communication System: 802.11 b/g/n; Frequency: 2437 MHz;Duty Cycle: 1:1

Medium parameters used (interpolated): $f = 2437$ MHz; $\sigma = 1.77$ mho/m; $\epsilon_r = 39$; $\rho = 1000$ kg/m³

Phantom section: Flat Section

DASY5 Configuration:

- Probe: EX3DV4 - SN3716; ConvF(7.3, 7.3, 7.3); Calibrated: 2016-11-22
- Sensor-Surface: 2mm (Mechanical Surface Detection)
- Electronics: DAE4 Sn444; Calibrated: 2016-11-22
- Phantom: ELI V8.0; Type: QD OVA 004 AA; Serial: 2056
- Measurement SW: DASY5, V5.0 Build 125; SEMCAD X Version 13.4 Build 125

802.11g_ch 6_6 Mbps_Bottom/Area Scan (101x51x1): Measurement grid: dx=12mm, dy=12mm

Maximum value of SAR (interpolated) = 0.842 mW/g

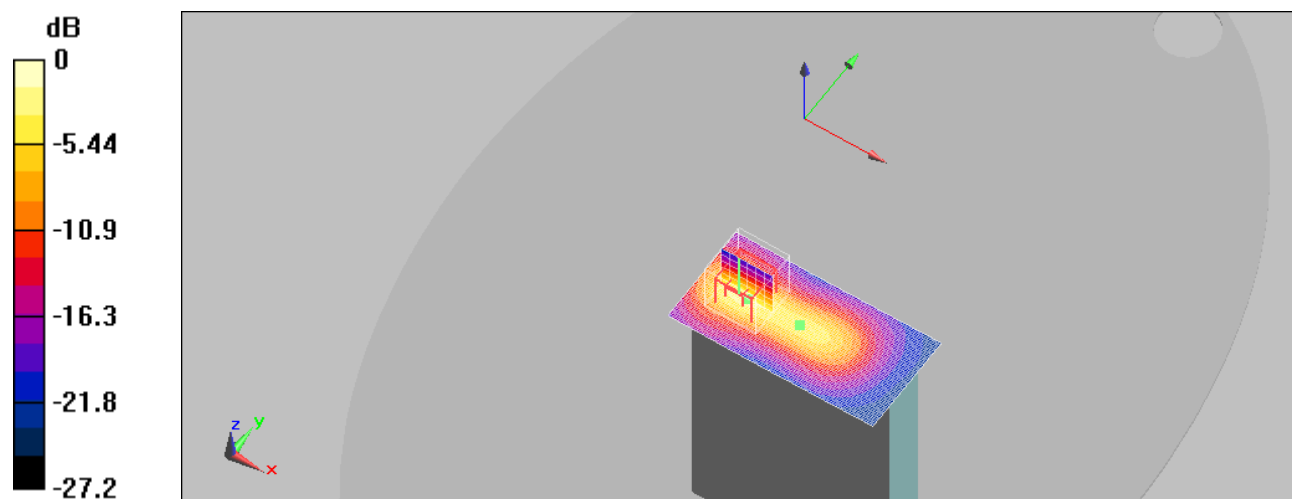
802.11g_ch 6_6 Mbps_Bottom/Zoom Scan (7x7x7)/Cube 0: Measurement grid: dx=5mm, dy=5mm, dz=5mm

Reference Value = 18.9 V/m; Power Drift = -0.00647 dB

Peak SAR (extrapolated) = 2.24 W/kg

SAR(1 g) = 0.818 mW/g; SAR(10 g) = 0.297 mW/g

Maximum value of SAR (measured) = 1.58 mW/g



0 dB = 1.58mW/g

< 802.11g_Head Tissue_6 Mbps_CH11_Bottom_0mm / Date :Aug 03, 2017 >

DUT: LP002; Type: Sample; Serial: Not Specified

Communication System: 802.11 b/g/n; Frequency: 2462 MHz;Duty Cycle: 1:1

Medium parameters used (interpolated): $f = 2462$ MHz; $\sigma = 1.8$ mho/m; $\epsilon_r = 38.9$; $\rho = 1000$ kg/m³

Phantom section: Flat Section

DASY5 Configuration:

- Probe: EX3DV4 - SN3716; ConvF(7.3, 7.3, 7.3); Calibrated: 2016-11-22
- Sensor-Surface: 2mm (Mechanical Surface Detection)
- Electronics: DAE4 Sn444; Calibrated: 2016-11-22
- Phantom: ELI V8.0; Type: QD OVA 004 AA; Serial: 2056
- Measurement SW: DASY5, V5.0 Build 125; SEMCAD X Version 13.4 Build 125

802.11g_ch 11_6 Mbps_Bottom/Area Scan (101x51x1): Measurement grid: dx=12mm, dy=12mm

Maximum value of SAR (interpolated) = 1.09 mW/g

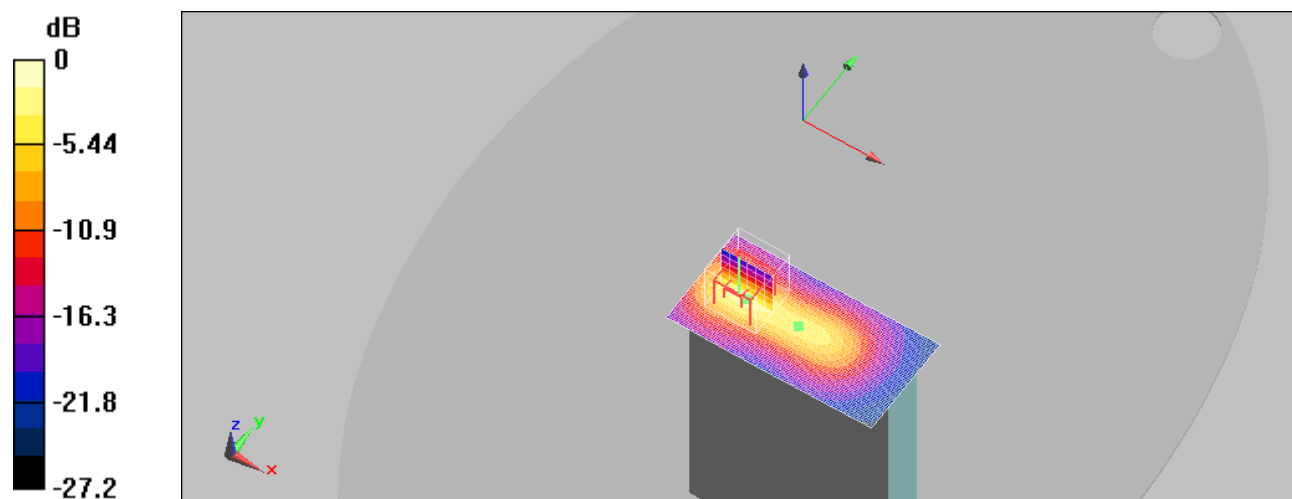
802.11g_ch 11_6 Mbps_Bottom/Zoom Scan (7x7x7)/Cube 0: Measurement grid: dx=5mm, dy=5mm, dz=5mm

Reference Value = 20.5 V/m; Power Drift = -0.00836 dB

Peak SAR (extrapolated) = 2.79 W/kg

SAR(1 g) = 1.02 mW/g; SAR(10 g) = 0.371 mW/g

Maximum value of SAR (measured) = 1.91 mW/g



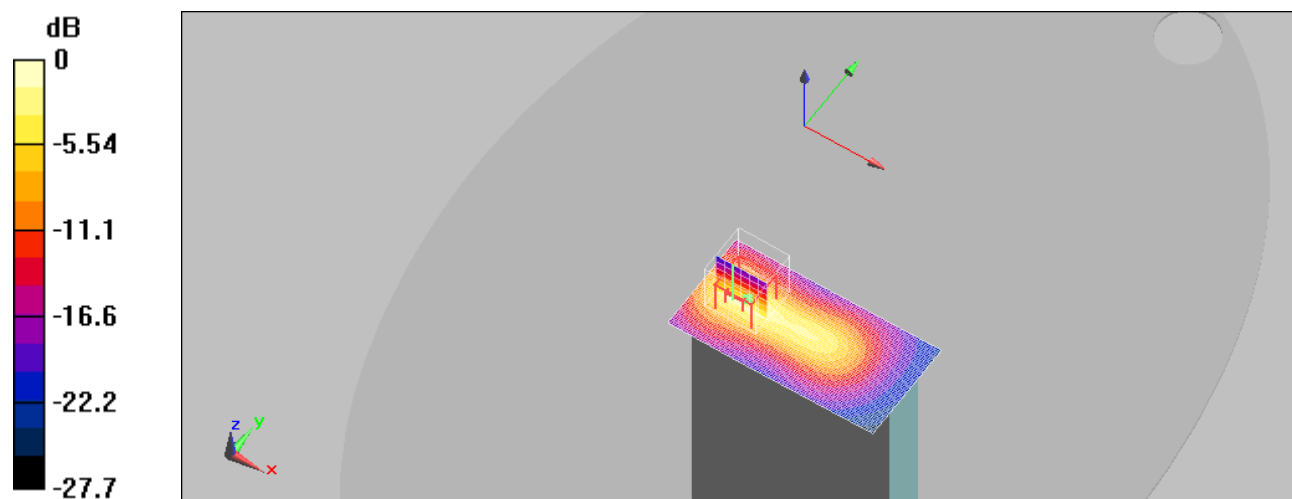
0 dB = 1.91mW/g

< 802.11g_Head Tissue_6 Mbps_CH11_Bottom_0mm_Repeated / Date :Aug 03, 2017 >

DUT: LP002; Type: Sample; Serial: Not Specified
 Communication System: 802.11 b/g/n; Frequency: 2462 MHz;Duty Cycle: 1:1
 Medium parameters used (interpolated): $f = 2462$ MHz; $\sigma = 1.8$ mho/m; $\epsilon_r = 38.9$; $\rho = 1000$ kg/m³
 Phantom section: Flat Section
 DASY5 Configuration:
 - Probe: EX3DV4 - SN3716; ConvF(7.3, 7.3, 7.3); Calibrated: 2016-11-22
 - Sensor-Surface: 2mm (Mechanical Surface Detection)
 - Electronics: DAE4 Sn444; Calibrated: 2016-11-22
 - Phantom: ELI V8.0; Type: QD OVA 004 AA; Serial: 2056
 - Measurement SW: DASY5, V5.0 Build 125; SEMCAD X Version 13.4 Build 125

802.11g_ch 11_6 Mbps_Bottom/Area Scan (101x51x1): Measurement grid: dx=12mm, dy=12mm
 Maximum value of SAR (interpolated) = 1.21 mW/g

802.11g_ch 11_6 Mbps_Bottom/Zoom Scan (7x7x7)/Cube 0: Measurement grid: dx=5mm, dy=5mm, dz=5mm
 Reference Value = 20.5 V/m; Power Drift = 0.049 dB
 Peak SAR (extrapolated) = 2.88 W/kg
 SAR(1 g) = 1.05 mW/g; SAR(10 g) = 0.384 mW/g
 Maximum value of SAR (measured) = 1.67 mW/g



0 dB = 1.67mW/g

< 802.11g_Head Tissue_6 Mbps_CH6_Front_0mm / Date :Aug 03, 2017 >

DUT: LP002; Type: Sample; Serial: Not Specified

Communication System: 802.11 b/g/n; Frequency: 2437 MHz;Duty Cycle: 1:1

Medium parameters used (interpolated): $f = 2437$ MHz; $\sigma = 1.77$ mho/m; $\epsilon_r = 39$; $\rho = 1000$ kg/m³

Phantom section: Flat Section

DASY5 Configuration:

- Probe: EX3DV4 - SN3716; ConvF(7.3, 7.3, 7.3); Calibrated: 2016-11-22
- Sensor-Surface: 2mm (Mechanical Surface Detection)
- Electronics: DAE4 Sn444; Calibrated: 2016-11-22
- Phantom: ELI V8.0; Type: QD OVA 004 AA; Serial: 2056
- Measurement SW: DASY5, V5.0 Build 125; SEMCAD X Version 13.4 Build 125

802.11g_ch 6_6 Mbps_Front/Area Scan (131x61x1): Measurement grid: dx=12mm, dy=12mm
 Maximum value of SAR (interpolated) = 0.180 mW/g

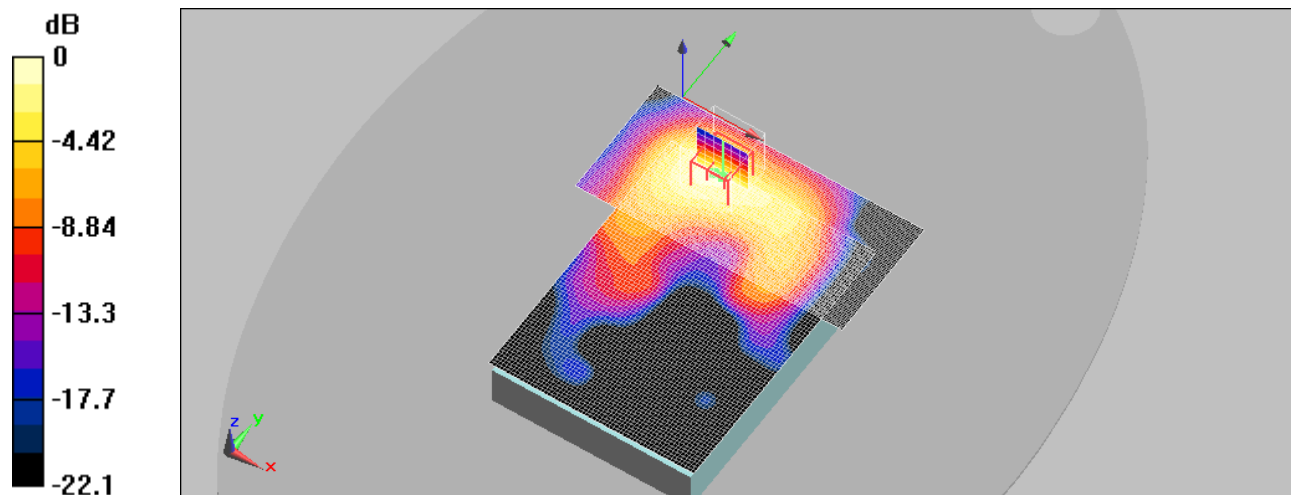
802.11g_ch 6_6 Mbps_Front/Zoom Scan (7x7x7)/Cube 0: Measurement grid: dx=5mm, dy=5mm, dz=5mm

Reference Value = 0.902 V/m; Power Drift = -0.069 dB

Peak SAR (extrapolated) = 0.258 W/kg

SAR(1 g) = 0.135 mW/g; SAR(10 g) = 0.069 mW/g

Maximum value of SAR (measured) = 0.196 mW/g



0 dB = 0.196mW/g

< 802.11g_Head Tissue_6 Mbps_CH6_Back_0mm / Date :Aug 03, 2017 >

DUT: LP002; Type: Sample; Serial: Not Specified

Communication System: 802.11 b/g/n; Frequency: 2437 MHz;Duty Cycle: 1:1

Medium parameters used (interpolated): $f = 2437$ MHz; $\sigma = 1.77$ mho/m; $\epsilon_r = 39$; $\rho = 1000$ kg/m³

Phantom section: Flat Section

DASY5 Configuration:

- Probe: EX3DV4 - SN3716; ConvF(7.3, 7.3, 7.3); Calibrated: 2016-11-22
- Sensor-Surface: 2mm (Mechanical Surface Detection)
- Electronics: DAE4 Sn444; Calibrated: 2016-11-22
- Phantom: ELI V8.0; Type: QD OVA 004 AA; Serial: 2056
- Measurement SW: DASY5, V5.0 Build 125; SEMCAD X Version 13.4 Build 125

802.11g_ch 6_6 Mbps_Back/Area Scan (131x61x1): Measurement grid: dx=12mm, dy=12mm
 Maximum value of SAR (interpolated) = 0.485 mW/g

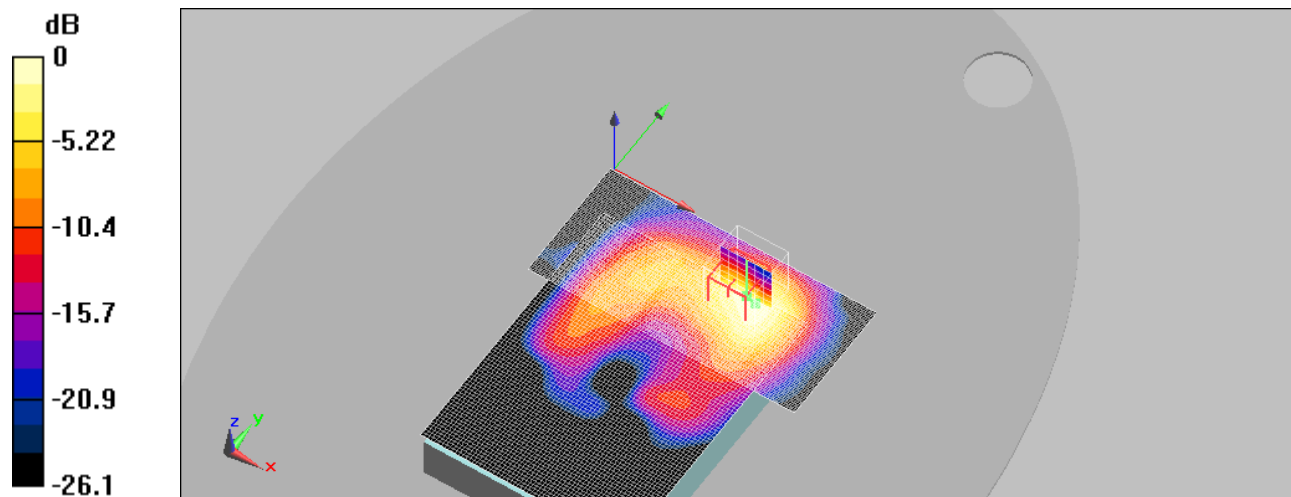
802.11g_ch 6_6 Mbps_Back/Zoom Scan (7x7x7)/Cube 0: Measurement grid: dx=5mm, dy=5mm, dz=5mm

Reference Value = 0.497 V/m; Power Drift = 0.150 dB

Peak SAR (extrapolated) = 0.655 W/kg

SAR(1 g) = 0.297 mW/g; SAR(10 g) = 0.132 mW/g

Maximum value of SAR (measured) = 0.480 mW/g



0 dB = 0.480mW/g

< 802.11g_Head Tissue_6 Mbps_CH6_Right_0mm / Date :Aug 03, 2017 >

DUT: LP002; Type: Sample; Serial: Not Specified

Communication System: 802.11 b/g/n; Frequency: 2437 MHz;Duty Cycle: 1:1

Medium parameters used (interpolated): $f = 2437$ MHz; $\sigma = 1.77$ mho/m; $\epsilon_r = 39$; $\rho = 1000$ kg/m³

Phantom section: Flat Section

DASY5 Configuration:

- Probe: EX3DV4 - SN3716; ConvF(7.3, 7.3, 7.3); Calibrated: 2016-11-22
- Sensor-Surface: 2mm (Mechanical Surface Detection)
- Electronics: DAE4 Sn444; Calibrated: 2016-11-22
- Phantom: ELI V8.0; Type: QD OVA 004 AA; Serial: 2056
- Measurement SW: DASY5, V5.0 Build 125; SEMCAD X Version 13.4 Build 125

802.11g_ch 6_6 Mbps_Right/Area Scan (81x51x1): Measurement grid: dx=12mm, dy=12mm
 Maximum value of SAR (interpolated) = 0.166 mW/g

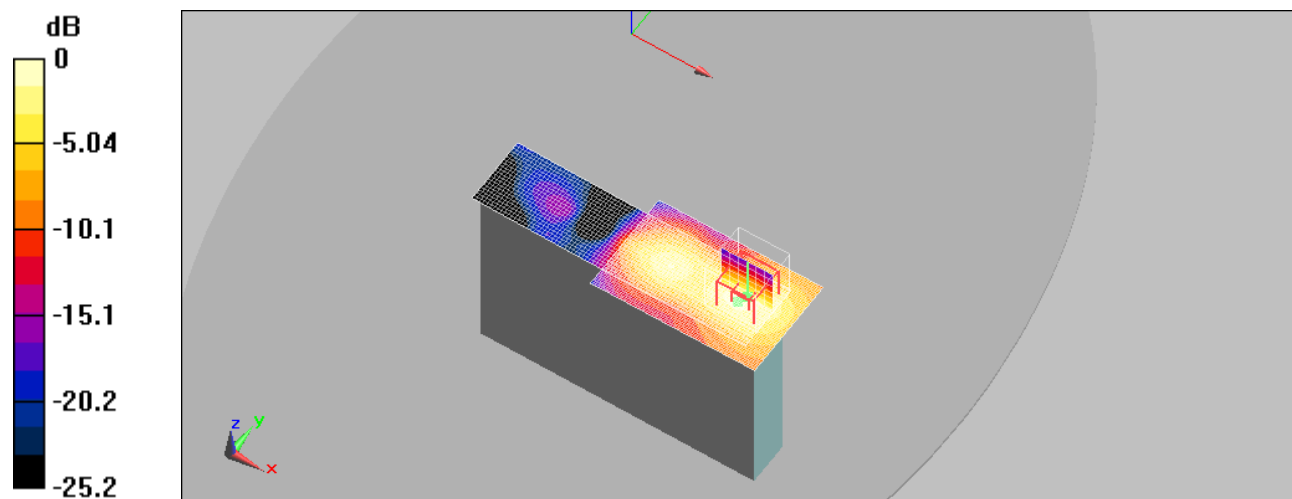
802.11g_ch 6_6 Mbps_Right/Zoom Scan (7x7x7)/Cube 0: Measurement grid: dx=5mm, dy=5mm, dz=5mm

Reference Value = 4.89 V/m; Power Drift = 0.031 dB

Peak SAR (extrapolated) = 0.227 W/kg

SAR(1 g) = 0.114 mW/g; SAR(10 g) = 0.055 mW/g

Maximum value of SAR (measured) = 0.172 mW/g



0 dB = 0.172mW/g

< 802.11g_Body Tissue_6 Mbps_CH1_Bottom_0mm / Date :Aug 07, 2017 >

DUT: LP002; Type: Sample; Serial: Not Specified

Communication System: 802.11 b/g/n; Frequency: 2412 MHz;Duty Cycle: 1:1

Medium parameters used (interpolated): $f = 2412$ MHz; $\sigma = 1.94$ mho/m; $\epsilon_r = 52.6$; $\rho = 1000$ kg/m³

Phantom section: Flat Section

DASY5 Configuration:

- Probe: EX3DV4 - SN3716; ConvF(7.2, 7.2, 7.2); Calibrated: 2016-11-22
- Sensor-Surface: 2mm (Mechanical Surface Detection)
- Electronics: DAE4 Sn444; Calibrated: 2016-11-22
- Phantom: ELI V8.0; Type: QD OVA 004 AA; Serial: 2056
- Measurement SW: DASY5, V5.0 Build 125; SEMCAD X Version 13.4 Build 125

802.11g_ch 1_6 Mbps_Bottom/Area Scan (101x51x1): Measurement grid: dx=12mm, dy=12mm

Maximum value of SAR (interpolated) = 0.811 mW/g

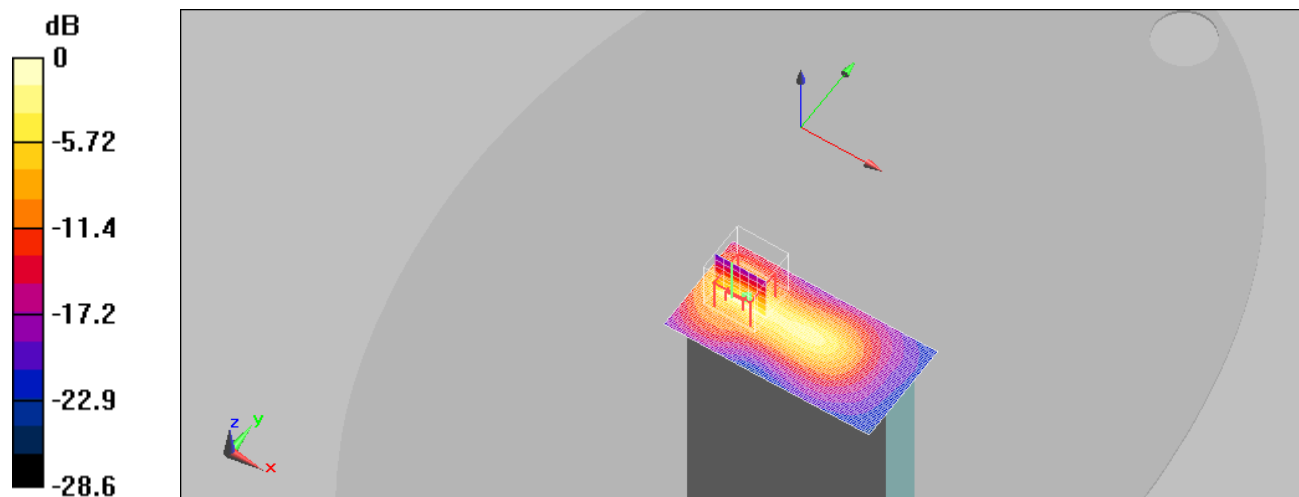
802.11g_ch 1_6 Mbps_Bottom/Zoom Scan (7x7x7)/Cube 0: Measurement grid: dx=5mm, dy=5mm, dz=5mm

Reference Value = 15.5 V/m; Power Drift = -0.039 dB

Peak SAR (extrapolated) = 1.55 W/kg

SAR(1 g) = 0.577 mW/g; SAR(10 g) = 0.211 mW/g

Maximum value of SAR (measured) = 0.993 mW/g



0 dB = 0.993mW/g

< 802.11g_Body Tissue_6 Mbps_CH6_Bottom_0mm / Date :Aug 07, 2017 >

DUT: LP002; Type: Sample; Serial: Not Specified

Communication System: 802.11 b/g/n; Frequency: 2437 MHz;Duty Cycle: 1:1

Medium parameters used (interpolated): $f = 2437$ MHz; $\sigma = 1.97$ mho/m; $\epsilon_r = 52.6$; $\rho = 1000$ kg/m³

Phantom section: Flat Section

DASY5 Configuration:

- Probe: EX3DV4 - SN3716; ConvF(7.2, 7.2, 7.2); Calibrated: 2016-11-22
- Sensor-Surface: 2mm (Mechanical Surface Detection)
- Electronics: DAE4 Sn444; Calibrated: 2016-11-22
- Phantom: ELI V8.0; Type: QD OVA 004 AA; Serial: 2056
- Measurement SW: DASY5, V5.0 Build 125; SEMCAD X Version 13.4 Build 125

802.11g_ch 6_6 Mbps_Bottom/Area Scan (101x51x1): Measurement grid: dx=12mm, dy=12mm

Maximum value of SAR (interpolated) = 1.2 mW/g

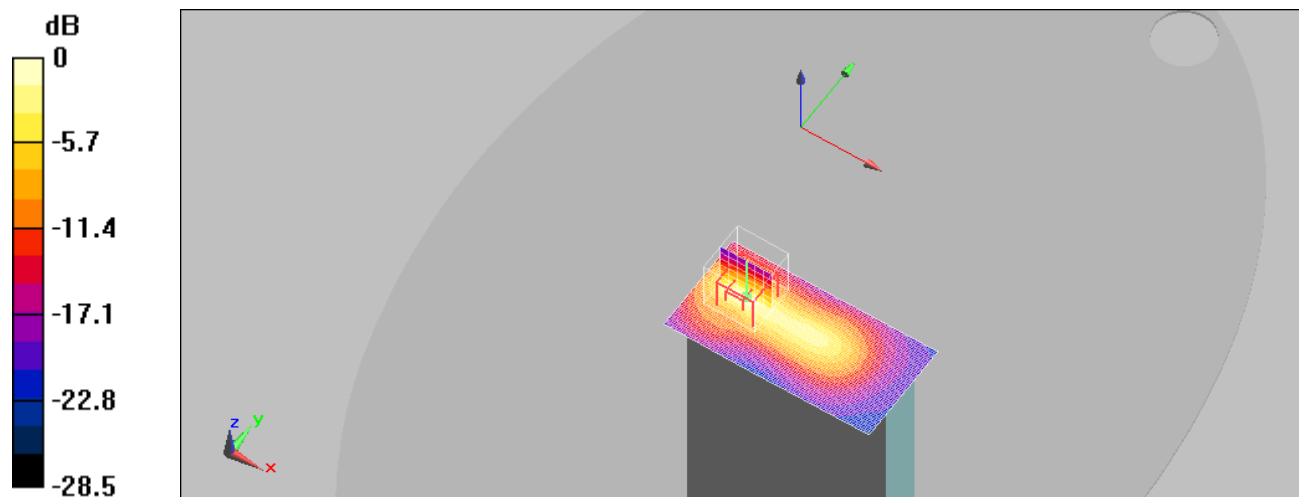
802.11g_ch 6_6 Mbps_Bottom/Zoom Scan (7x7x7)/Cube 0: Measurement grid: dx=5mm, dy=5mm, dz=5mm

Reference Value = 16.9 V/m; Power Drift = -0.052 dB

Peak SAR (extrapolated) = 2.01 W/kg

SAR(1 g) = 0.747 mW/g; SAR(10 g) = 0.274 mW/g

Maximum value of SAR (measured) = 1.2 mW/g



0 dB = 1.2mW/g

< 802.11g_Body Tissue_6 Mbps_CH11_Bottom_0mm / Date :Aug 07, 2017 >

DUT: LP002; Type: Sample; Serial: Not Specified

Communication System: 802.11 b/g/n; Frequency: 2462 MHz;Duty Cycle: 1:1

Medium parameters used (interpolated): $f = 2462$ MHz; $\sigma = 2$ mho/m; $\epsilon_r = 52.5$; $\rho = 1000$ kg/m³

Phantom section: Flat Section

DASY5 Configuration:

- Probe: EX3DV4 - SN3716; ConvF(7.2, 7.2, 7.2); Calibrated: 2016-11-22
- Sensor-Surface: 2mm (Mechanical Surface Detection)
- Electronics: DAE4 Sn444; Calibrated: 2016-11-22
- Phantom: ELI V8.0; Type: QD OVA 004 AA; Serial: 2056
- Measurement SW: DASY5, V5.0 Build 125; SEMCAD X Version 13.4 Build 125

802.11g_ch 11_6 Mbps_Bottom/Area Scan (101x51x1): Measurement grid: dx=12mm, dy=12mm

Maximum value of SAR (interpolated) = 1.3 mW/g

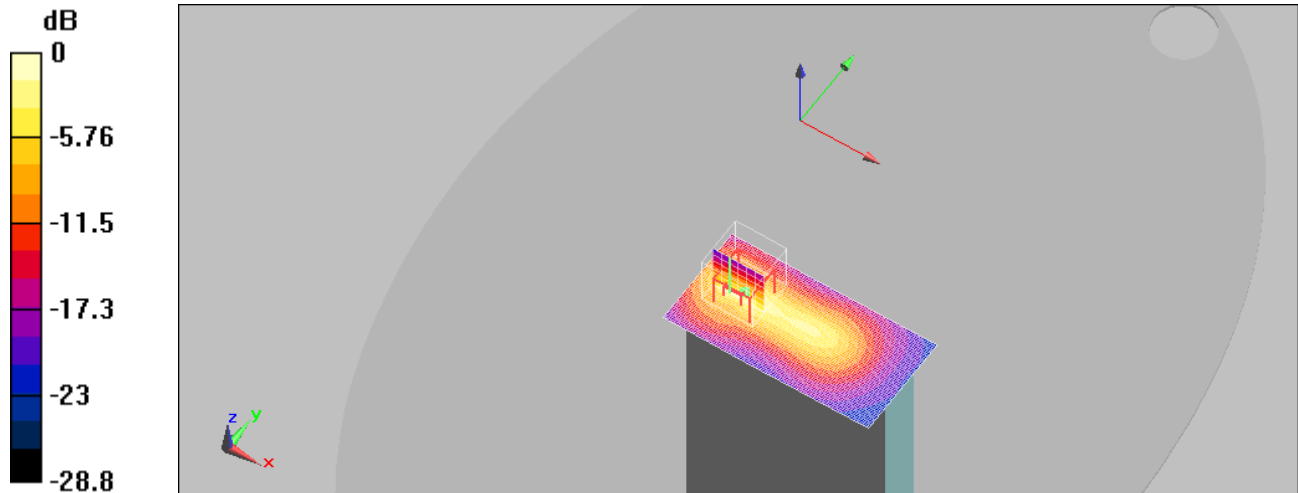
802.11g_ch 11_6 Mbps_Bottom/Zoom Scan (7x7x7)/Cube 0: Measurement grid: dx=5mm, dy=5mm, dz=5mm

Reference Value = 18.6 V/m; Power Drift = 0.031 dB

Peak SAR (extrapolated) = 2.57 W/kg

SAR(1 g) = 0.953 mW/g; SAR(10 g) = 0.351 mW/g

Maximum value of SAR (measured) = 1.63 mW/g



0 dB = 1.63mW/g

< 802.11g_Body Tissue_6 Mbps_CH11_Bottom_0mm_Repeated / Date :Aug 07, 2017 >

DUT: LP002; Type: Sample; Serial: Not Specified

Communication System: 802.11 b/g/n; Frequency: 2462 MHz;Duty Cycle: 1:1

Medium parameters used (interpolated): $f = 2462$ MHz; $\sigma = 2$ mho/m; $\epsilon_r = 52.5$; $\rho = 1000$ kg/m³

Phantom section: Flat Section

DASY5 Configuration:

- Probe: EX3DV4 - SN3716; ConvF(7.2, 7.2, 7.2); Calibrated: 2016-11-22
- Sensor-Surface: 2mm (Mechanical Surface Detection)
- Electronics: DAE4 Sn444; Calibrated: 2016-11-22
- Phantom: ELI V8.0; Type: QD OVA 004 AA; Serial: 2056
- Measurement SW: DASY5, V5.0 Build 125; SEMCAD X Version 13.4 Build 125

802.11g_ch 11_6 Mbps_Bottom/Area Scan (101x51x1): Measurement grid: dx=12mm, dy=12mm

Maximum value of SAR (interpolated) = 1.26 mW/g

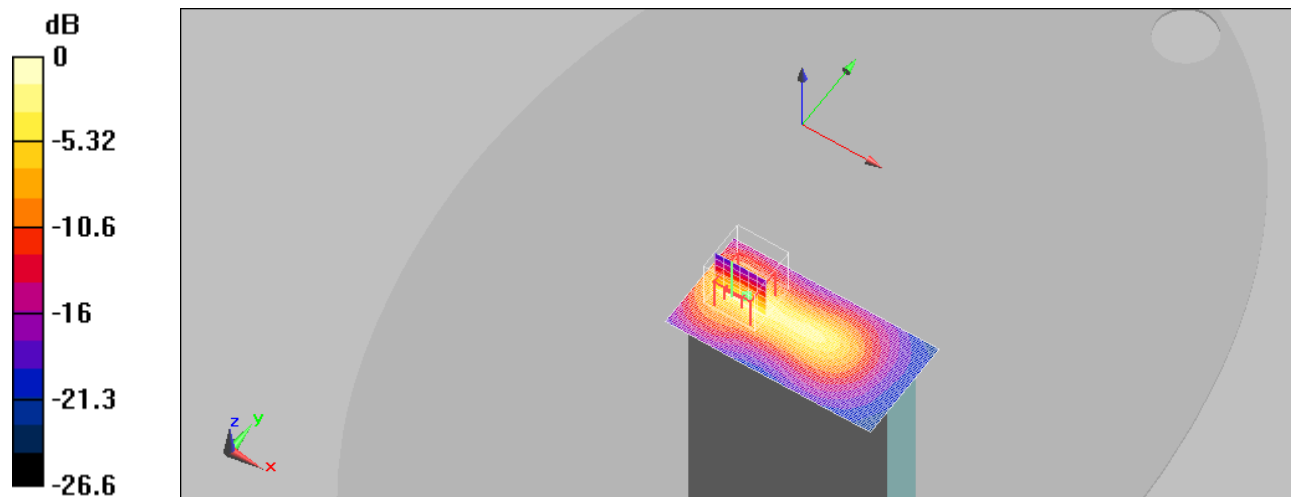
802.11g_ch 11_6 Mbps_Bottom/Zoom Scan (7x7x7)/Cube 0: Measurement grid: dx=5mm, dy=5mm, dz=5mm

Reference Value = 18.9 V/m; Power Drift = 0.171 dB

Peak SAR (extrapolated) = 2.51 W/kg

SAR(1 g) = 0.934 mW/g; SAR(10 g) = 0.341 mW/g

Maximum value of SAR (measured) = 1.49 mW/g



0 dB = 1.49mW/g

< 802.11g_Body Tissue_6 Mbps_CH6_Front_0mm / Date :Aug 07, 2017 >

DUT: LP002; Type: Sample; Serial: Not Specified

Communication System: 802.11 b/g/n; Frequency: 2437 MHz;Duty Cycle: 1:1

Medium parameters used (interpolated): $f = 2437$ MHz; $\sigma = 1.97$ mho/m; $\epsilon_r = 52.6$; $\rho = 1000$ kg/m³

Phantom section: Flat Section

DASY5 Configuration:

- Probe: EX3DV4 - SN3716; ConvF(7.2, 7.2, 7.2); Calibrated: 2016-11-22
- Sensor-Surface: 2mm (Mechanical Surface Detection)
- Electronics: DAE4 Sn444; Calibrated: 2016-11-22
- Phantom: ELI V8.0; Type: QD OVA 004 AA; Serial: 2056
- Measurement SW: DASY5, V5.0 Build 125; SEMCAD X Version 13.4 Build 125

802.11g_ch 6_6 Mbps_Front/Area Scan (131x61x1): Measurement grid: dx=12mm, dy=12mm
 Maximum value of SAR (interpolated) = 0.165 mW/g

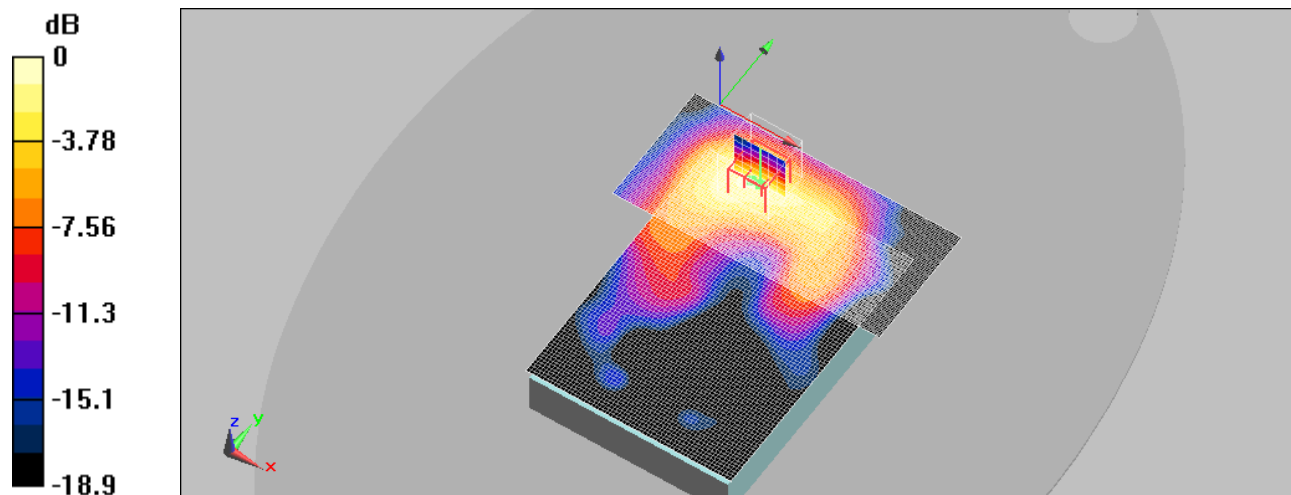
802.11g_ch 6_6 Mbps_Front/Zoom Scan (7x7x7)/Cube 0: Measurement grid: dx=5mm, dy=5mm, dz=5mm

Reference Value = 0.595 V/m; Power Drift = 0.035 dB

Peak SAR (extrapolated) = 0.237 W/kg

SAR(1 g) = 0.124 mW/g; SAR(10 g) = 0.065 mW/g

Maximum value of SAR (measured) = 0.178 mW/g



0 dB = 0.178mW/g

< 802.11g_Body Tissue_6 Mbps_CH6_Back_0mm / Date :Aug 07, 2017 >

DUT: LP002; Type: Sample; Serial: Not Specified

Communication System: 802.11 b/g/n; Frequency: 2437 MHz;Duty Cycle: 1:1

Medium parameters used (interpolated): $f = 2437$ MHz; $\sigma = 1.97$ mho/m; $\epsilon_r = 52.6$; $\rho = 1000$ kg/m³

Phantom section: Flat Section

DASY5 Configuration:

- Probe: EX3DV4 - SN3716; ConvF(7.2, 7.2, 7.2); Calibrated: 2016-11-22
- Sensor-Surface: 2mm (Mechanical Surface Detection)
- Electronics: DAE4 Sn444; Calibrated: 2016-11-22
- Phantom: ELI V8.0; Type: QD OVA 004 AA; Serial: 2056
- Measurement SW: DASY5, V5.0 Build 125; SEMCAD X Version 13.4 Build 125

802.11g_ch 6_6 Mbps_Back/Area Scan (131x61x1): Measurement grid: dx=12mm, dy=12mm
 Maximum value of SAR (interpolated) = 0.465 mW/g

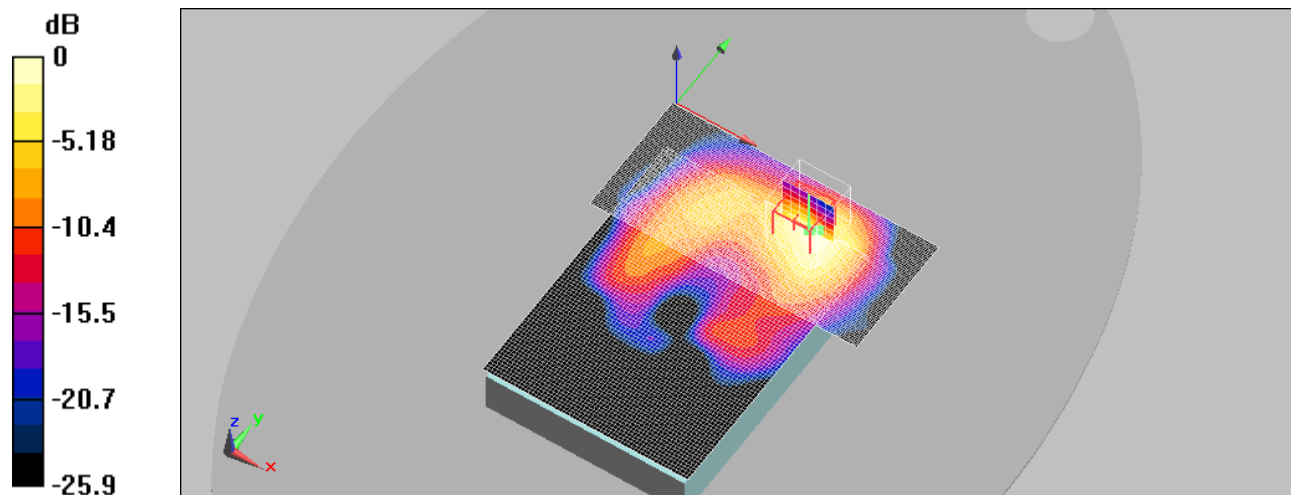
802.11g_ch 6_6 Mbps_Back/Zoom Scan (7x7x7)/Cube 0: Measurement grid: dx=5mm, dy=5mm, dz=5mm

Reference Value = 1.01 V/m; Power Drift = 0.024 dB

Peak SAR (extrapolated) = 0.608 W/kg

SAR(1 g) = 0.281 mW/g; SAR(10 g) = 0.126 mW/g

Maximum value of SAR (measured) = 0.449 mW/g



0 dB = 0.449mW/g

< 802.11g_Body Tissue_6 Mbps_CH6_Right_0mm / Date :Aug 07, 2017 >

DUT: LP002; Type: Sample; Serial: Not Specified

Communication System: 802.11 b/g/n; Frequency: 2437 MHz;Duty Cycle: 1:1

Medium parameters used (interpolated): $f = 2437$ MHz; $\sigma = 1.97$ mho/m; $\epsilon_r = 52.6$; $\rho = 1000$ kg/m³

Phantom section: Flat Section

DASY5 Configuration:

- Probe: EX3DV4 - SN3716; ConvF(7.2, 7.2, 7.2); Calibrated: 2016-11-22
- Sensor-Surface: 2mm (Mechanical Surface Detection)
- Electronics: DAE4 Sn444; Calibrated: 2016-11-22
- Phantom: ELI V8.0; Type: QD OVA 004 AA; Serial: 2056
- Measurement SW: DASY5, V5.0 Build 125; SEMCAD X Version 13.4 Build 125

802.11g_ch 6_6 Mbps_Right/Area Scan (81x51x1): Measurement grid: dx=12mm, dy=12mm
 Maximum value of SAR (interpolated) = 0.144 mW/g

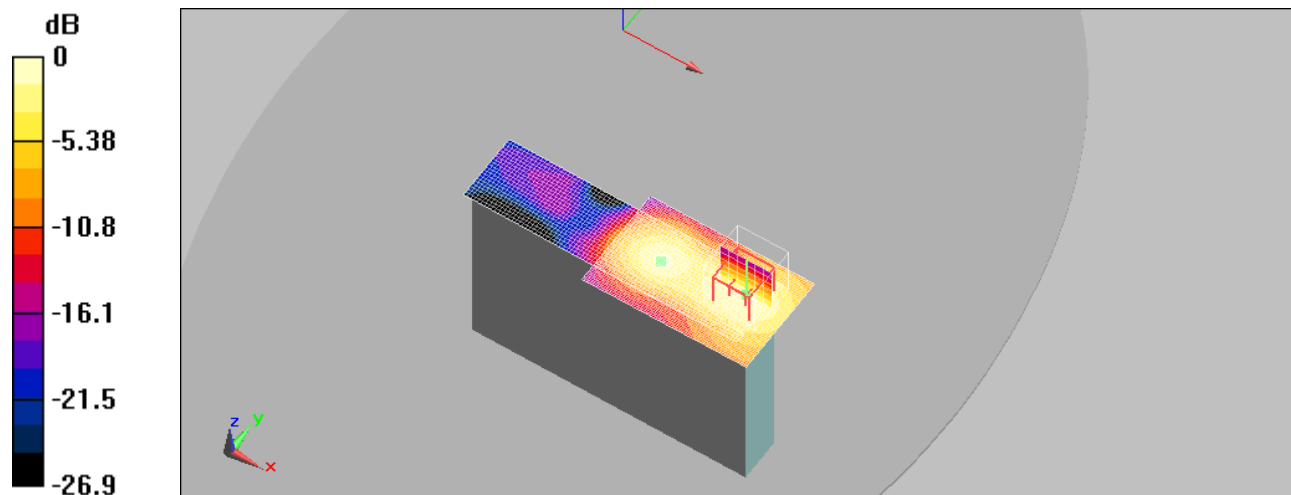
802.11g_ch 6_6 Mbps_Right/Zoom Scan (7x7x7)/Cube 0: Measurement grid: dx=5mm, dy=5mm, dz=5mm

Reference Value = 4.13 V/m; Power Drift = -0.106 dB

Peak SAR (extrapolated) = 0.196 W/kg

SAR(1 g) = 0.097 mW/g; SAR(10 g) = 0.047 mW/g

Maximum value of SAR (measured) = 0.146 mW/g



0 dB = 0.146mW/g

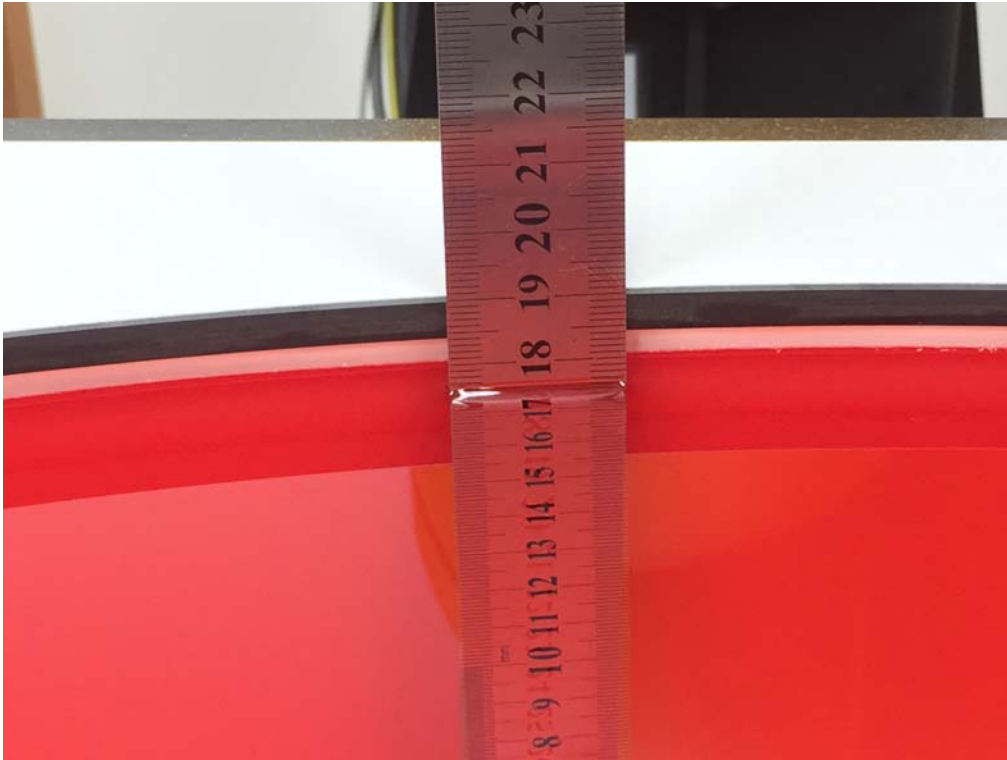
ANNEX C. PHOTOGRAPHS

< System Verification >



< 2 450 MHz >

< Liquid Depth >



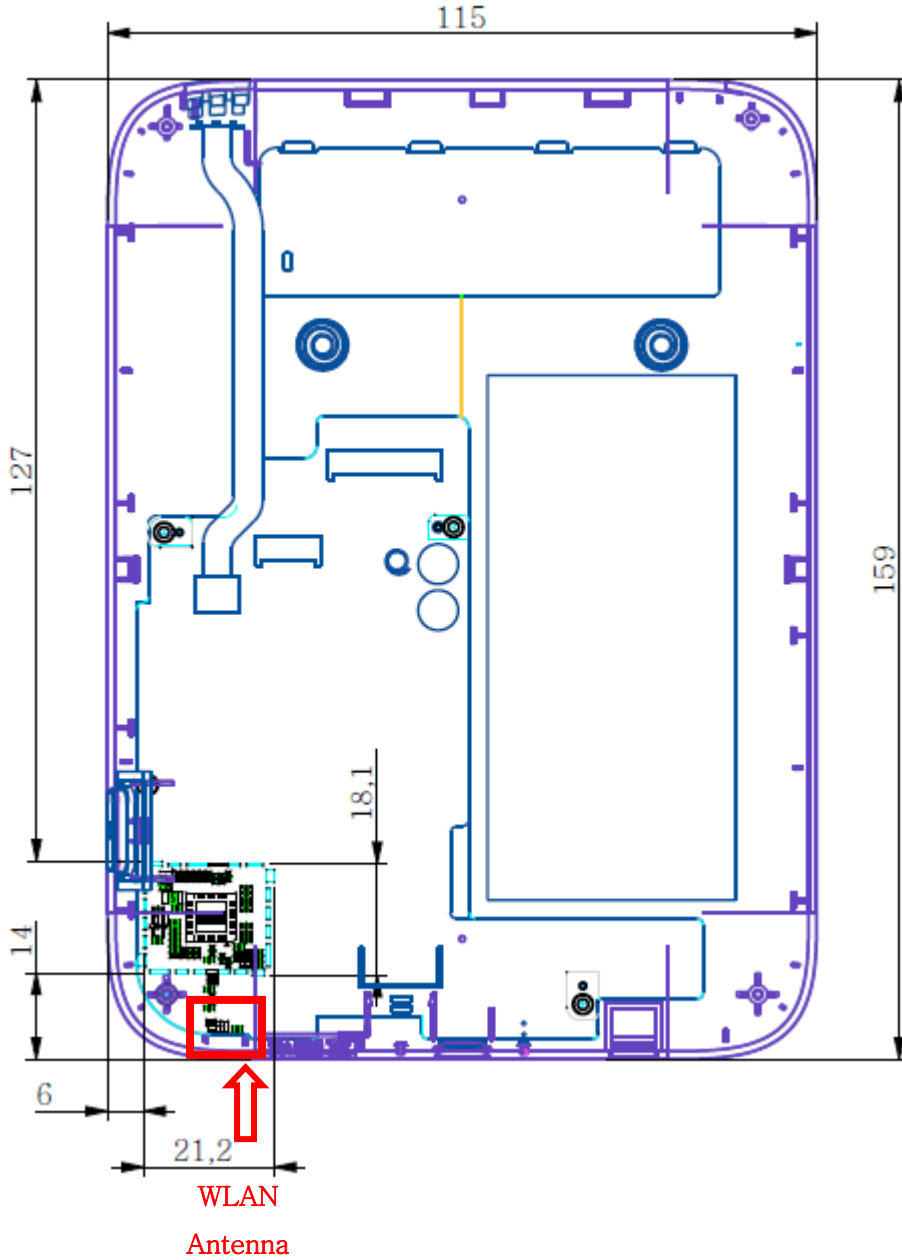
< Head Tissue 2 450 MHz >



< Body Tissue 2 450 MHz >

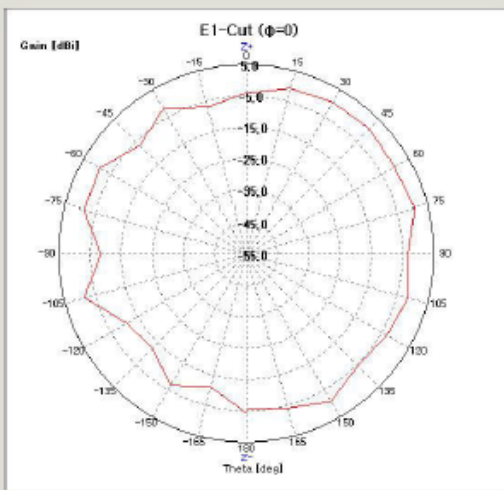
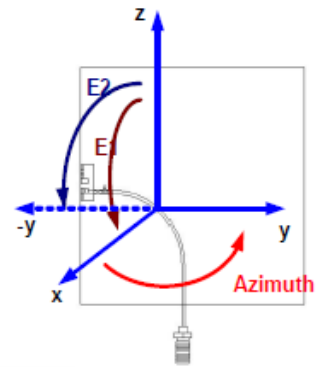
ANNEX D. ANTENNA INFORMATION

< Antenna Location >

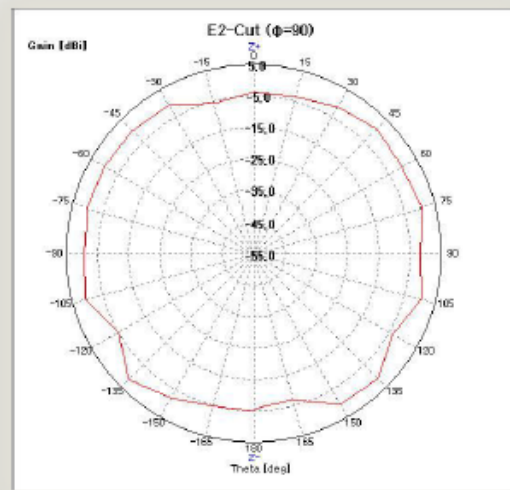


< Antenna Data Sheet >

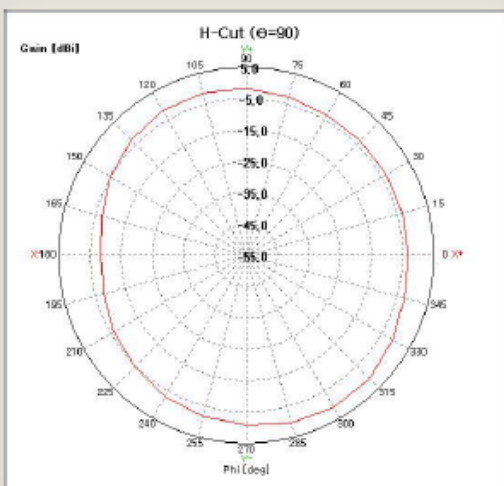
| Freq. [MHz] | Efficiency (%) | Avg. Gain (dBi) | Peak Gain (dBi) |
|-------------|----------------|-----------------|-----------------|
| 2400 | 54.2 | -2.7 | 1.0 |
| 2442 | 71.5 | -1.5 | 1.8 |
| 2485 | 56.5 | -2.5 | 0.5 |



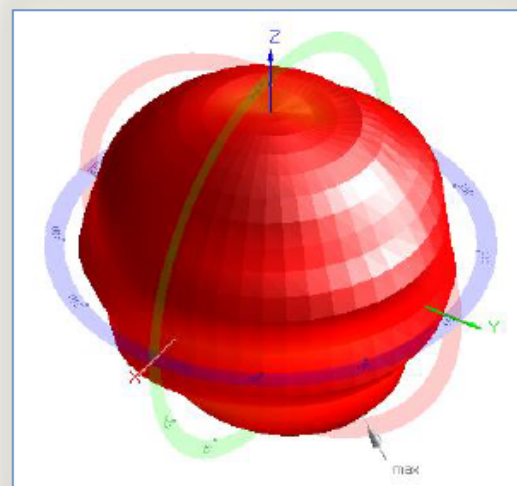
[Elevation1 plane @2.442GHz]



[Elevation2 plane @2.442GHz]



[Azimuth plane @2.442GHz]



[3D Radiation Pattern]

ANNEX E. PROBE AND DIPOLE CALIBRATION CERTIFICATES

< E-Field Probe : EX3DV4 – SN 3716 >

**Calibration Laboratory of
Schmid & Partner
Engineering AG**
Zeughausstrasse 43, 8004 Zurich, Switzerland



S Schweizerischer Kalibrierdienst
C Service suisse d'étalonnage
S Servizio svizzero di taratura
S Swiss Calibration Service

Accredited by the Swiss Accreditation Service (SAS)
The Swiss Accreditation Service is one of the signatories to the EA
Multilateral Agreement for the recognition of calibration certificates

Accreditation No.: **SCS 0108**

Client **Onetech (Dymstec)**

Certificate No: **EX3-3716_Nov16**

CALIBRATION CERTIFICATE

Object: **EX3DV4 - SN:3716**

Calibration procedure(s): **QA CAL-01.v9, QA CAL-14.v4, QA CAL-23.v5, QA CAL-25.v6
Calibration procedure for dosimetric E-field probes**

Calibration date: **November 22, 2016**

This calibration certificate documents the traceability to national standards, which realize the physical units of measurements (SI).
The measurements and the uncertainties with confidence probability are given on the following pages and are part of the certificate.

All calibrations have been conducted in the closed laboratory facility: environment temperature (22 ± 3)°C and humidity < 70%.

Calibration Equipment used (M&TE critical for calibration)

| Primary Standards | ID | Cal Date (Certificate No.) | Scheduled Calibration |
|----------------------------|------------------|-----------------------------------|------------------------|
| Power meter NRP | SN: 104778 | 06-Apr-16 (No. 217-02288/02289) | Apr-17 |
| Power sensor NRP-Z91 | SN: 103244 | 06-Apr-16 (No. 217-02288) | Apr-17 |
| Power sensor NRP-Z91 | SN: 103245 | 06-Apr-16 (No. 217-02289) | Apr-17 |
| Reference 20 dB Attenuator | SN: S5277 (20x) | 05-Apr-16 (No. 217-02293) | Apr-17 |
| Reference Probe ES3DV2 | SN: 3013 | 31-Dec-15 (No. ES3-3013_Dec15) | Dec-16 |
| DAE4 | SN: 660 | 23-Dec-15 (No. DAE4-660_Dec15) | Dec-16 |
| Secondary Standards | ID | Check Date (in house) | Scheduled Check |
| Power meter E4419B | SN: GB41293874 | 06-Apr-16 (in house check Jun-16) | In house check: Jun-18 |
| Power sensor E4412A | SN: MY41498087 | 06-Apr-16 (in house check Jun-16) | In house check: Jun-18 |
| Power sensor E4412A | SN: 000110210 | 06-Apr-16 (in house check Jun-16) | In house check: Jun-18 |
| RF generator HP 8648C | SN: US3642U01700 | 04-Aug-99 (in house check Jun-16) | In house check: Jun-18 |
| Network Analyzer HP 8753E | SN: US37390585 | 18-Oct-01 (in house check Oct-16) | In house check: Oct-17 |

| | | | |
|----------------|-------------------------------|--|---------------|
| Calibrated by: | Name Jeton Kastrati | Function Laboratory Technician | Signature |
| Approved by: | Name Katja Pokovic | Function Technical Manager | Signature |

Issued: November 28, 2016

This calibration certificate shall not be reproduced except in full without written approval of the laboratory.

**Calibration Laboratory of
Schmid & Partner
Engineering AG**
Zeughausstrasse 43, 8004 Zurich, Switzerland



S Schweizerischer Kalibrierdienst
C Service suisse d'étalonnage
S Servizio svizzero di taratura
S Swiss Calibration Service

Accredited by the Swiss Accreditation Service (SAS)
The Swiss Accreditation Service is one of the signatories to the EA
Multilateral Agreement for the recognition of calibration certificates

Accreditation No.: **SCS 0108**

Glossary:

| | |
|-----------------------|---|
| TSL | tissue simulating liquid |
| NORM _{x,y,z} | sensitivity in free space |
| ConvF | sensitivity in TSL / NORM _{x,y,z} |
| DCP | diode compression point |
| CF | crest factor (1/duty_cycle) of the RF signal |
| A, B, C, D | modulation dependent linearization parameters |
| Polarization φ | φ rotation around probe axis |
| Polarization θ | θ rotation around an axis that is in the plane normal to probe axis (at measurement center), i.e., θ = 0 is normal to probe axis |
| Connector Angle | information used in DASY system to align probe sensor X to the robot coordinate system |

Calibration is Performed According to the Following Standards:

- a) IEEE Std 1528-2013, "IEEE Recommended Practice for Determining the Peak Spatial-Averaged Specific Absorption Rate (SAR) in the Human Head from Wireless Communications Devices: Measurement Techniques", June 2013
- b) IEC 62209-1, "Procedure to measure the Specific Absorption Rate (SAR) for hand-held devices used in close proximity to the ear (frequency range of 300 MHz to 3 GHz)", February 2005
- c) IEC 62209-2, "Procedure to determine the Specific Absorption Rate (SAR) for wireless communication devices used in close proximity to the human body (frequency range of 30 MHz to 6 GHz)", March 2010
- d) KDB 865664, "SAR Measurement Requirements for 100 MHz to 6 GHz"

Methods Applied and Interpretation of Parameters:

- **NORM_{x,y,z}**: Assessed for E-field polarization θ = 0 (f ≤ 900 MHz in TEM-cell; f > 1800 MHz: R22 waveguide). NORM_{x,y,z} are only intermediate values, i.e., the uncertainties of NORM_{x,y,z} does not affect the E²-field uncertainty inside TSL (see below ConvF).
- **NORM(f)_{x,y,z} = NORM_{x,y,z} * frequency_response** (see Frequency Response Chart). This linearization is implemented in DASY4 software versions later than 4.2. The uncertainty of the frequency response is included in the stated uncertainty of ConvF.
- **DCP_{x,y,z}**: DCP are numerical linearization parameters assessed based on the data of power sweep with CW signal (no uncertainty required). DCP does not depend on frequency nor media.
- **PAR**: PAR is the Peak to Average Ratio that is not calibrated but determined based on the signal characteristics
- **A_{x,y,z}; B_{x,y,z}; C_{x,y,z}; D_{x,y,z}; VR_{x,y,z}**: A, B, C, D are numerical linearization parameters assessed based on the data of power sweep for specific modulation signal. The parameters do not depend on frequency nor media. VR is the maximum calibration range expressed in RMS voltage across the diode.
- **ConvF and Boundary Effect Parameters**: Assessed in flat phantom using E-field (or Temperature Transfer Standard for f ≤ 800 MHz) and inside waveguide using analytical field distributions based on power measurements for f > 800 MHz. The same setups are used for assessment of the parameters applied for boundary compensation (alpha, depth) of which typical uncertainty values are given. These parameters are used in DASY4 software to improve probe accuracy close to the boundary. The sensitivity in TSL corresponds to NORM_{x,y,z} * ConvF whereby the uncertainty corresponds to that given for ConvF. A frequency dependent ConvF is used in DASY version 4.4 and higher which allows extending the validity from ± 50 MHz to ± 100 MHz.
- **Spherical isotropy (3D deviation from isotropy)**: in a field of low gradients realized using a flat phantom exposed by a patch antenna.
- **Sensor Offset**: The sensor offset corresponds to the offset of virtual measurement center from the probe tip (on probe axis). No tolerance required.
- **Connector Angle**: The angle is assessed using the information gained by determining the NORM_x (no uncertainty required).

EX3DV4 – SN:3716

November 22, 2016

Probe EX3DV4

SN:3716

Manufactured: August 14, 2009
Calibrated: November 22, 2016

Calibrated for DASY/EASY Systems
(Note: non-compatible with DASY2 system!)

EX3DV4- SN:3716

November 22, 2016

DASY/EASY - Parameters of Probe: EX3DV4 - SN:3716

Basic Calibration Parameters

| | Sensor X | Sensor Y | Sensor Z | Unc (k=2) |
|---|----------|----------|----------|---------------|
| Norm ($\mu\text{V}/(\text{V}/\text{m})^2$) ^A | 0.48 | 0.52 | 0.46 | $\pm 10.1 \%$ |
| DCP (mV) ^B | 98.3 | 99.1 | 99.4 | |

Modulation Calibration Parameters

| UID | Communication System Name | | A dB | B dB $\sqrt{\mu\text{V}}$ | C | D dB | VR mV | Unc ^E (k=2) |
|-----|---------------------------|---|---------|------------------------------|-----|---------|----------|---------------------------|
| 0 | CW | X | 0.0 | 0.0 | 1.0 | 0.00 | 157.3 | $\pm 2.5 \%$ |
| | | Y | 0.0 | 0.0 | 1.0 | | 157.5 | |
| | | Z | 0.0 | 0.0 | 1.0 | | 153.9 | |

The reported uncertainty of measurement is stated as the standard uncertainty of measurement multiplied by the coverage factor k=2, which for a normal distribution corresponds to a coverage probability of approximately 95%.

^A The uncertainties of Norm X,Y,Z do not affect the E²-field uncertainty inside TSL (see Pages 5 and 6).

^B Numerical linearization parameter: uncertainty not required.

^E Uncertainty is determined using the max. deviation from linear response applying rectangular distribution and is expressed for the square of the field value.

EX3DV4- SN:3716

November 22, 2016

DASY/EASY - Parameters of Probe: EX3DV4 - SN:3716

Calibration Parameter Determined in Head Tissue Simulating Media

| f (MHz) ^C | Relative Permittivity ^F | Conductivity (S/m) ^F | ConvF X | ConvF Y | ConvF Z | Alpha ^G | Depth ^G (mm) | Unc (k=2) |
|----------------------|------------------------------------|---------------------------------|---------|---------|---------|--------------------|-------------------------|-----------|
| 2450 | 39.2 | 1.80 | 7.30 | 7.30 | 7.30 | 0.30 | 1.06 | ± 12.0 % |
| 5200 | 36.0 | 4.66 | 5.14 | 5.14 | 5.14 | 0.35 | 1.80 | ± 13.1 % |
| 5300 | 35.9 | 4.76 | 4.95 | 4.95 | 4.95 | 0.35 | 1.80 | ± 13.1 % |
| 5500 | 35.6 | 4.96 | 4.61 | 4.61 | 4.61 | 0.40 | 1.80 | ± 13.1 % |
| 5600 | 35.5 | 5.07 | 4.49 | 4.49 | 4.49 | 0.40 | 1.80 | ± 13.1 % |
| 5800 | 35.3 | 5.27 | 4.53 | 4.53 | 4.53 | 0.40 | 1.80 | ± 13.1 % |

^C Frequency validity above 300 MHz of ± 100 MHz only applies for DASY v4.4 and higher (see Page 2), else it is restricted to ± 50 MHz. The uncertainty is the RSS of the ConvF uncertainty at calibration frequency and the uncertainty for the indicated frequency band. Frequency validity below 300 MHz is ± 10, 25, 40, 50 and 70 MHz for ConvF assessments at 30, 64, 128, 150 and 220 MHz respectively. Above 5 GHz frequency validity can be extended to ± 110 MHz.

^F At frequencies below 3 GHz, the validity of tissue parameters (ϵ and σ) can be relaxed to ± 10% if liquid compensation formula is applied to measured SAR values. At frequencies above 3 GHz, the validity of tissue parameters (ϵ and σ) is restricted to ± 5%. The uncertainty is the RSS of the ConvF uncertainty for indicated target tissue parameters.

^G Alpha/Depth are determined during calibration. SPEAG warrants that the remaining deviation due to the boundary effect after compensation is always less than ± 1% for frequencies below 3 GHz and below ± 2% for frequencies between 3-6 GHz at any distance larger than half the probe tip diameter from the boundary.

EX3DV4- SN:3716

November 22, 2016

DASY/EASY - Parameters of Probe: EX3DV4 - SN:3716

Calibration Parameter Determined in Body Tissue Simulating Media

| f (MHz) ^C | Relative Permittivity ^F | Conductivity (S/m) ^F | ConvF X | ConvF Y | ConvF Z | Alpha ^G | Depth ^G (mm) | Unc (k=2) |
|----------------------|------------------------------------|---------------------------------|---------|---------|---------|--------------------|-------------------------|-----------|
| 2450 | 52.7 | 1.95 | 7.20 | 7.20 | 7.20 | 0.38 | 0.80 | ± 12.0 % |
| 5200 | 49.0 | 5.30 | 4.59 | 4.59 | 4.59 | 0.45 | 1.90 | ± 13.1 % |
| 5300 | 48.9 | 5.42 | 4.42 | 4.42 | 4.42 | 0.45 | 1.90 | ± 13.1 % |
| 5500 | 48.6 | 5.65 | 4.08 | 4.08 | 4.08 | 0.50 | 1.90 | ± 13.1 % |
| 5600 | 48.5 | 5.77 | 4.00 | 4.00 | 4.00 | 0.50 | 1.90 | ± 13.1 % |
| 5800 | 48.2 | 6.00 | 4.16 | 4.16 | 4.16 | 0.50 | 1.90 | ± 13.1 % |

^C Frequency validity above 300 MHz of ± 100 MHz only applies for DASY v4.4 and higher (see Page 2), else it is restricted to ± 50 MHz. The uncertainty is the RSS of the ConvF uncertainty at calibration frequency and the uncertainty for the indicated frequency band. Frequency validity below 300 MHz is ± 10, 25, 40, 50 and 70 MHz for ConvF assessments at 30, 64, 128, 150 and 220 MHz respectively. Above 5 GHz frequency validity can be extended to ± 110 MHz.

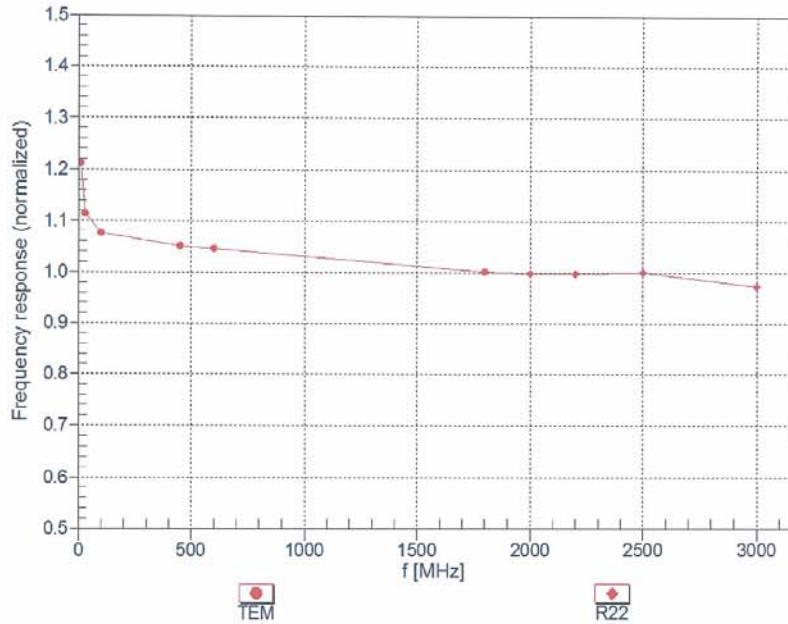
^F At frequencies below 3 GHz, the validity of tissue parameters (ϵ and σ) can be relaxed to ± 10% if liquid compensation formula is applied to measured SAR values. At frequencies above 3 GHz, the validity of tissue parameters (ϵ and σ) is restricted to ± 5%. The uncertainty is the RSS of the ConvF uncertainty for indicated target tissue parameters.

^G Alpha/Depth are determined during calibration. SPEAG warrants that the remaining deviation due to the boundary effect after compensation is always less than ± 1% for frequencies below 3 GHz and below ± 2% for frequencies between 3-6 GHz at any distance larger than half the probe tip diameter from the boundary.

EX3DV4-SN:3716

November 22, 2016

Frequency Response of E-Field (TEM-Cell:ifi110 EXX, Waveguide: R22)



Uncertainty of Frequency Response of E-field: $\pm 6.3\%$ (k=2)

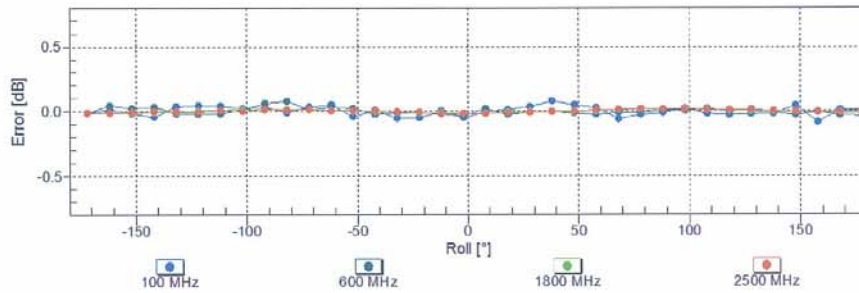
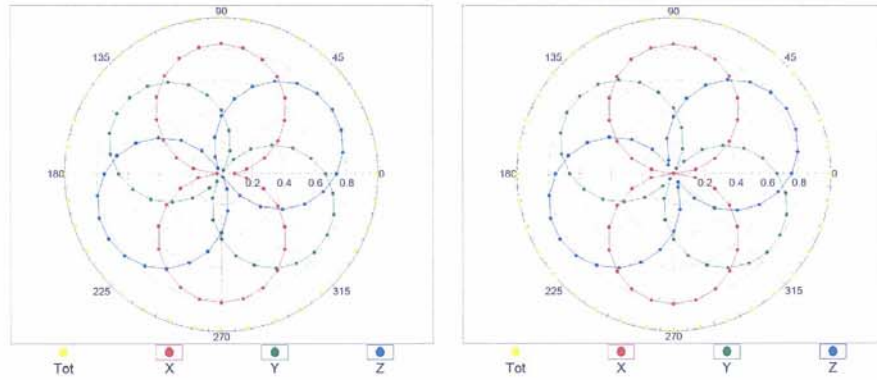
EX3DV4- SN:3716

November 22, 2016

Receiving Pattern (ϕ), $\theta = 0^\circ$

f=600 MHz,TEM

f=1800 MHz,R22

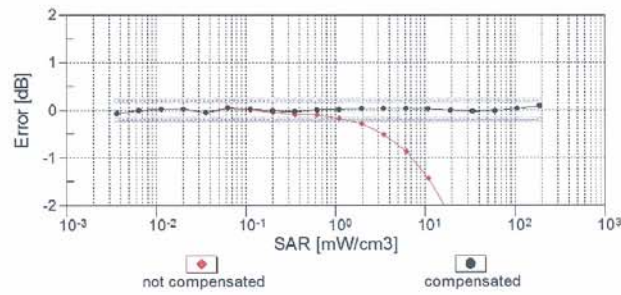
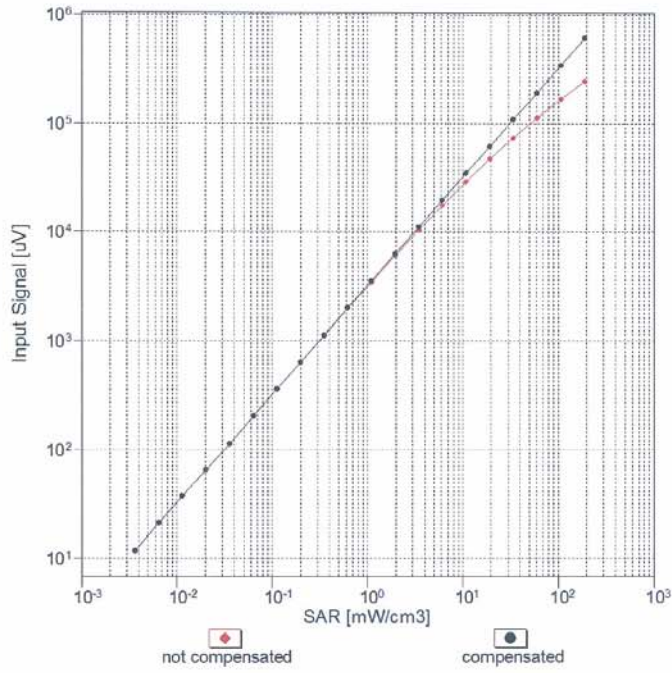


Uncertainty of Axial Isotropy Assessment: $\pm 0.5\%$ (k=2)

EX3DV4- SN:3716

November 22, 2016

Dynamic Range f(SAR_{head})
(TEM cell , f_{eval}= 1900 MHz)

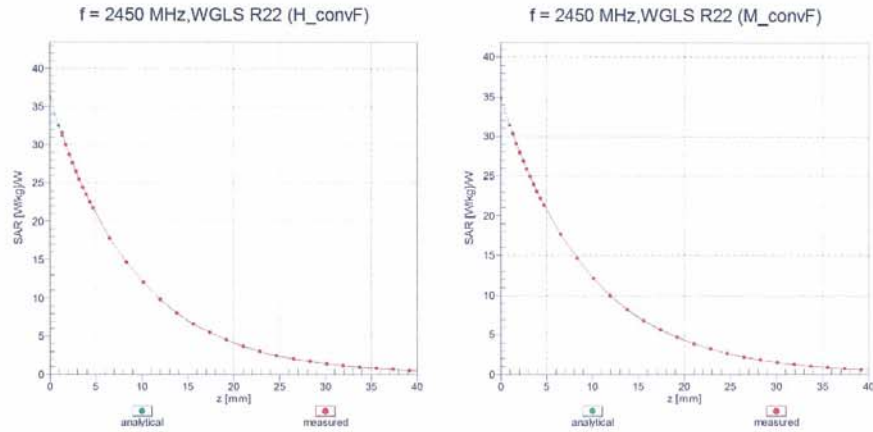


Uncertainty of Linearity Assessment: ± 0.6% (k=2)

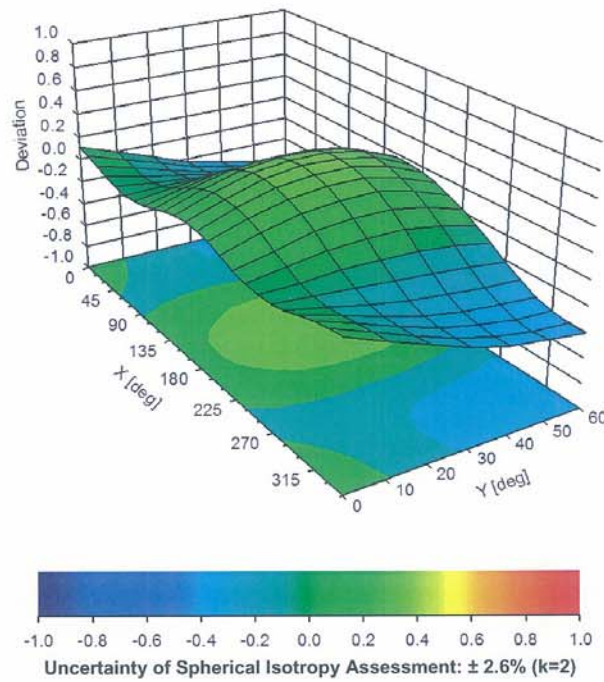
EX3DV4- SN:3716

November 22, 2016

Conversion Factor Assessment



Deviation from Isotropy in Liquid Error (ϕ, ϑ), $f = 900$ MHz



EX3DV4- SN:3716

November 22, 2016

DASY/EASY - Parameters of Probe: EX3DV4 - SN:3716

Other Probe Parameters

| | |
|---|------------|
| Sensor Arrangement | Triangular |
| Connector Angle (°) | 108.1 |
| Mechanical Surface Detection Mode | enabled |
| Optical Surface Detection Mode | disabled |
| Probe Overall Length | 337 mm |
| Probe Body Diameter | 10 mm |
| Tip Length | 9 mm |
| Tip Diameter | 2.5 mm |
| Probe Tip to Sensor X Calibration Point | 1 mm |
| Probe Tip to Sensor Y Calibration Point | 1 mm |
| Probe Tip to Sensor Z Calibration Point | 1 mm |
| Recommended Measurement Distance from Surface | 1.4 mm |

< Dipole Antenna : D2450V2 – SN 923 >

**Calibration Laboratory of
Schmid & Partner
Engineering AG**
Zeughausstrasse 43, 8004 Zurich, Switzerland



S Schweizerischer Kalibrierdienst
C Service suisse d'étalonnage
S Servizio svizzero di taratura
S Swiss Calibration Service

Accredited by the Swiss Accreditation Service (SAS)
The Swiss Accreditation Service is one of the signatories to the EA
Multilateral Agreement for the recognition of calibration certificates

Accreditation No.: **SCS 0108**

Cient **Onetech (Dymstec)**

Certificate No: **D2450V2-923_Nov15**

| CALIBRATION CERTIFICATE | | | | | | | | | | | | | | | | | | | | | | | | | | | | | | | | | | | | | | | | | | | | | | | |
|--|--|-----------------------------------|---------------------------|-------------------|------|----------------------------|-----------------------|----------------------|------------|---------------------------|--------|-----------------------|------------|---------------------------|--------|-----------------------|------------|---------------------------|--------|----------------------------|----------------|---------------------------|--------|-----------------------------|--------------------|---------------------------|--------|------------------------|----------|--------------------------------|--------|------|---------|--------------------------------|--------|---------------------|------|-----------------------|-----------------|-------------------------|--------|-----------------------------------|------------------------|---------------------------|------------------|-----------------------------------|------------------------|
| Object | D2450V2 - SN: 923 | | | | | | | | | | | | | | | | | | | | | | | | | | | | | | | | | | | | | | | | | | | | | | |
| Calibration procedure(s) | QA CAL-05.v9 Calibration procedure for dipole validation kits above 700 MHz | | | | | | | | | | | | | | | | | | | | | | | | | | | | | | | | | | | | | | | | | | | | | | |
| Calibration date: | November 18, 2015 | | | | | | | | | | | | | | | | | | | | | | | | | | | | | | | | | | | | | | | | | | | | | | |
| <p>This calibration certificate documents the traceability to national standards, which realize the physical units of measurements (SI). The measurements and the uncertainties with confidence probability are given on the following pages and are part of the certificate.</p> <p>All calibrations have been conducted in the closed laboratory facility: environment temperature (22 ± 3)°C and humidity < 70%.</p> <p>Calibration Equipment used (M&TE critical for calibration)</p> <table border="1"> <thead> <tr> <th>Primary Standards</th> <th>ID #</th> <th>Cal Date (Certificate No.)</th> <th>Scheduled Calibration</th> </tr> </thead> <tbody> <tr> <td>Power meter EPM-442A</td> <td>GB37480704</td> <td>07-Oct-15 (No. 217-02222)</td> <td>Oct-16</td> </tr> <tr> <td>Power sensor HP 8481A</td> <td>US37292783</td> <td>07-Oct-15 (No. 217-02222)</td> <td>Oct-16</td> </tr> <tr> <td>Power sensor HP 8481A</td> <td>MY41092317</td> <td>07-Oct-15 (No. 217-02223)</td> <td>Oct-16</td> </tr> <tr> <td>Reference 20 dB Attenuator</td> <td>SN: 5058 (20k)</td> <td>01-Apr-15 (No. 217-02131)</td> <td>Mar-16</td> </tr> <tr> <td>Type-N mismatch combination</td> <td>SN: 5047.2 / 06327</td> <td>01-Apr-15 (No. 217-02134)</td> <td>Mar-16</td> </tr> <tr> <td>Reference Probe EX3DV4</td> <td>SN: 7349</td> <td>30-Dec-14 (No. EX3-7349_Dec14)</td> <td>Dec-15</td> </tr> <tr> <td>DAE4</td> <td>SN: 601</td> <td>17-Aug-15 (No. DAE4-601_Aug15)</td> <td>Aug-16</td> </tr> </tbody> </table> <table border="1"> <thead> <tr> <th>Secondary Standards</th> <th>ID #</th> <th>Check Date (in house)</th> <th>Scheduled Check</th> </tr> </thead> <tbody> <tr> <td>RF generator R&S SMT-06</td> <td>100972</td> <td>15-Jun-15 (in house check Jun-15)</td> <td>In house check: Jun-18</td> </tr> <tr> <td>Network Analyzer HP 8753E</td> <td>US37390585 S4206</td> <td>18-Oct-01 (in house check Oct-15)</td> <td>In house check: Oct-16</td> </tr> </tbody> </table> | | | | Primary Standards | ID # | Cal Date (Certificate No.) | Scheduled Calibration | Power meter EPM-442A | GB37480704 | 07-Oct-15 (No. 217-02222) | Oct-16 | Power sensor HP 8481A | US37292783 | 07-Oct-15 (No. 217-02222) | Oct-16 | Power sensor HP 8481A | MY41092317 | 07-Oct-15 (No. 217-02223) | Oct-16 | Reference 20 dB Attenuator | SN: 5058 (20k) | 01-Apr-15 (No. 217-02131) | Mar-16 | Type-N mismatch combination | SN: 5047.2 / 06327 | 01-Apr-15 (No. 217-02134) | Mar-16 | Reference Probe EX3DV4 | SN: 7349 | 30-Dec-14 (No. EX3-7349_Dec14) | Dec-15 | DAE4 | SN: 601 | 17-Aug-15 (No. DAE4-601_Aug15) | Aug-16 | Secondary Standards | ID # | Check Date (in house) | Scheduled Check | RF generator R&S SMT-06 | 100972 | 15-Jun-15 (in house check Jun-15) | In house check: Jun-18 | Network Analyzer HP 8753E | US37390585 S4206 | 18-Oct-01 (in house check Oct-15) | In house check: Oct-16 |
| Primary Standards | ID # | Cal Date (Certificate No.) | Scheduled Calibration | | | | | | | | | | | | | | | | | | | | | | | | | | | | | | | | | | | | | | | | | | | | |
| Power meter EPM-442A | GB37480704 | 07-Oct-15 (No. 217-02222) | Oct-16 | | | | | | | | | | | | | | | | | | | | | | | | | | | | | | | | | | | | | | | | | | | | |
| Power sensor HP 8481A | US37292783 | 07-Oct-15 (No. 217-02222) | Oct-16 | | | | | | | | | | | | | | | | | | | | | | | | | | | | | | | | | | | | | | | | | | | | |
| Power sensor HP 8481A | MY41092317 | 07-Oct-15 (No. 217-02223) | Oct-16 | | | | | | | | | | | | | | | | | | | | | | | | | | | | | | | | | | | | | | | | | | | | |
| Reference 20 dB Attenuator | SN: 5058 (20k) | 01-Apr-15 (No. 217-02131) | Mar-16 | | | | | | | | | | | | | | | | | | | | | | | | | | | | | | | | | | | | | | | | | | | | |
| Type-N mismatch combination | SN: 5047.2 / 06327 | 01-Apr-15 (No. 217-02134) | Mar-16 | | | | | | | | | | | | | | | | | | | | | | | | | | | | | | | | | | | | | | | | | | | | |
| Reference Probe EX3DV4 | SN: 7349 | 30-Dec-14 (No. EX3-7349_Dec14) | Dec-15 | | | | | | | | | | | | | | | | | | | | | | | | | | | | | | | | | | | | | | | | | | | | |
| DAE4 | SN: 601 | 17-Aug-15 (No. DAE4-601_Aug15) | Aug-16 | | | | | | | | | | | | | | | | | | | | | | | | | | | | | | | | | | | | | | | | | | | | |
| Secondary Standards | ID # | Check Date (in house) | Scheduled Check | | | | | | | | | | | | | | | | | | | | | | | | | | | | | | | | | | | | | | | | | | | | |
| RF generator R&S SMT-06 | 100972 | 15-Jun-15 (in house check Jun-15) | In house check: Jun-18 | | | | | | | | | | | | | | | | | | | | | | | | | | | | | | | | | | | | | | | | | | | | |
| Network Analyzer HP 8753E | US37390585 S4206 | 18-Oct-01 (in house check Oct-15) | In house check: Oct-16 | | | | | | | | | | | | | | | | | | | | | | | | | | | | | | | | | | | | | | | | | | | | |
| Calibrated by: | Name Leif Klysner | Function Laboratory Technician | Signature | | | | | | | | | | | | | | | | | | | | | | | | | | | | | | | | | | | | | | | | | | | | |
| Approved by: | Katja Pokovic | Technical Manager | | | | | | | | | | | | | | | | | | | | | | | | | | | | | | | | | | | | | | | | | | | | | |
| | | | Issued: November 19, 2015 | | | | | | | | | | | | | | | | | | | | | | | | | | | | | | | | | | | | | | | | | | | | |
| This calibration certificate shall not be reproduced except in full without written approval of the laboratory. | | | | | | | | | | | | | | | | | | | | | | | | | | | | | | | | | | | | | | | | | | | | | | | |

**Calibration Laboratory of
Schmid & Partner
Engineering AG**
Zeughausstrasse 43, 8004 Zurich, Switzerland



S Schweizerischer Kalibrierdienst
C Service suisse d'étalonnage
S Servizio svizzero di taratura
S Swiss Calibration Service

Accredited by the Swiss Accreditation Service (SAS)
The Swiss Accreditation Service is one of the signatories to the EA
Multilateral Agreement for the recognition of calibration certificates

Accreditation No.: **SCS 0108**

Glossary:

TSL tissue simulating liquid
ConvF sensitivity in TSL / NORM x,y,z
N/A not applicable or not measured

Calibration is Performed According to the Following Standards:

- a) IEEE Std 1528-2013, "IEEE Recommended Practice for Determining the Peak Spatial-Averaged Specific Absorption Rate (SAR) in the Human Head from Wireless Communications Devices: Measurement Techniques", June 2013
- b) IEC 62209-1, "Procedure to measure the Specific Absorption Rate (SAR) for hand-held devices used in close proximity to the ear (frequency range of 300 MHz to 3 GHz)", February 2005
- c) IEC 62209-2, "Procedure to determine the Specific Absorption Rate (SAR) for wireless communication devices used in close proximity to the human body (frequency range of 30 MHz to 6 GHz)", March 2010
- d) KDB 865664, "SAR Measurement Requirements for 100 MHz to 6 GHz"

Additional Documentation:

- e) DASY4/5 System Handbook

Methods Applied and Interpretation of Parameters:

- *Measurement Conditions:* Further details are available from the Validation Report at the end of the certificate. All figures stated in the certificate are valid at the frequency indicated.
- *Antenna Parameters with TSL:* The dipole is mounted with the spacer to position its feed point exactly below the center marking of the flat phantom section, with the arms oriented parallel to the body axis.
- *Feed Point Impedance and Return Loss:* These parameters are measured with the dipole positioned under the liquid filled phantom. The impedance stated is transformed from the measurement at the SMA connector to the feed point. The Return Loss ensures low reflected power. No uncertainty required.
- *Electrical Delay:* One-way delay between the SMA connector and the antenna feed point. No uncertainty required.
- *SAR measured:* SAR measured at the stated antenna input power.
- *SAR normalized:* SAR as measured, normalized to an input power of 1 W at the antenna connector.
- *SAR for nominal TSL parameters:* The measured TSL parameters are used to calculate the nominal SAR result.

The reported uncertainty of measurement is stated as the standard uncertainty of measurement multiplied by the coverage factor $k=2$, which for a normal distribution corresponds to a coverage probability of approximately 95%.

Measurement Conditions

DASY system configuration, as far as not given on page 1.

| | | |
|------------------------------|------------------------|-------------|
| DASY Version | DASY5 | V52.8.8 |
| Extrapolation | Advanced Extrapolation | |
| Phantom | Modular Flat Phantom | |
| Distance Dipole Center - TSL | 10 mm | with Spacer |
| Zoom Scan Resolution | dx, dy, dz = 5 mm | |
| Frequency | 2450 MHz ± 1 MHz | |

Head TSL parameters

The following parameters and calculations were applied.

| | Temperature | Permittivity | Conductivity |
|---|-----------------|--------------|------------------|
| Nominal Head TSL parameters | 22.0 °C | 39.2 | 1.80 mho/m |
| Measured Head TSL parameters | (22.0 ± 0.2) °C | 38.2 ± 6 % | 1.87 mho/m ± 6 % |
| Head TSL temperature change during test | < 0.5 °C | ---- | ---- |

SAR result with Head TSL

| SAR averaged over 1 cm ³ (1 g) of Head TSL | Condition | |
|---|--------------------|--------------------------|
| SAR measured | 250 mW input power | 13.3 W/kg |
| SAR for nominal Head TSL parameters | normalized to 1W | 51.9 W/kg ± 17.0 % (k=2) |

| SAR averaged over 10 cm ³ (10 g) of Head TSL | condition | |
|---|--------------------|--------------------------|
| SAR measured | 250 mW input power | 6.14 W/kg |
| SAR for nominal Head TSL parameters | normalized to 1W | 24.2 W/kg ± 16.5 % (k=2) |

Body TSL parameters

The following parameters and calculations were applied.

| | Temperature | Permittivity | Conductivity |
|---|-----------------|--------------|------------------|
| Nominal Body TSL parameters | 22.0 °C | 52.7 | 1.95 mho/m |
| Measured Body TSL parameters | (22.0 ± 0.2) °C | 52.7 ± 6 % | 2.02 mho/m ± 6 % |
| Body TSL temperature change during test | < 0.5 °C | ---- | ---- |

SAR result with Body TSL

| SAR averaged over 1 cm ³ (1 g) of Body TSL | Condition | |
|---|--------------------|--------------------------|
| SAR measured | 250 mW input power | 13.3 W/kg |
| SAR for nominal Body TSL parameters | normalized to 1W | 52.3 W/kg ± 17.0 % (k=2) |

| SAR averaged over 10 cm ³ (10 g) of Body TSL | condition | |
|---|--------------------|--------------------------|
| SAR measured | 250 mW input power | 6.22 W/kg |
| SAR for nominal Body TSL parameters | normalized to 1W | 24.7 W/kg ± 16.5 % (k=2) |

Appendix (Additional assessments outside the scope of SCS 0108)

Antenna Parameters with Head TSL

| | |
|--------------------------------------|--------------------------------|
| Impedance, transformed to feed point | 55.2 Ω + 0.2 j Ω |
| Return Loss | - 26.2 dB |

Antenna Parameters with Body TSL

| | |
|--------------------------------------|--------------------------------|
| Impedance, transformed to feed point | 50.7 Ω + 3.8 j Ω |
| Return Loss | - 28.2 dB |

General Antenna Parameters and Design

| | |
|----------------------------------|----------|
| Electrical Delay (one direction) | 1.158 ns |
|----------------------------------|----------|

After long term use with 100W radiated power, only a slight warming of the dipole near the feedpoint can be measured.

The dipole is made of standard semirigid coaxial cable. The center conductor of the feeding line is directly connected to the second arm of the dipole. The antenna is therefore short-circuited for DC-signals. On some of the dipoles, small end caps are added to the dipole arms in order to improve matching when loaded according to the position as explained in the "Measurement Conditions" paragraph. The SAR data are not affected by this change. The overall dipole length is still according to the Standard.

No excessive force must be applied to the dipole arms, because they might bend or the soldered connections near the feedpoint may be damaged.

Additional EUT Data

| | |
|-----------------|--------------------|
| Manufactured by | SPEAG |
| Manufactured on | September 26, 2013 |

DASY5 Validation Report for Head TSL

Date: 18.11.2015

Test Laboratory: SPEAG, Zurich, Switzerland

DUT: Dipole 2450 MHz ; Type: D2450V2; Serial: D2450V2 - SN: 923

Communication System: UID 0 - CW; Frequency: 2450 MHz

Medium parameters used: $f = 2450$ MHz; $\sigma = 1.87$ S/m; $\epsilon_r = 38.2$; $\rho = 1000$ kg/m³

Phantom section: Flat Section

Measurement Standard: DASY5 (IEEE/IEC/ANSI C63.19-2011)

DASY52 Configuration:

- Probe: EX3DV4 - SN7349; ConvF(7.67, 7.67, 7.67); Calibrated: 30.12.2014;
- Sensor-Surface: 1.4mm (Mechanical Surface Detection)
- Electronics: DAE4 Sn601; Calibrated: 17.08.2015
- Phantom: Flat Phantom 5.0 (front); Type: QD000P50AA; Serial: 1001
- DASY52 52.8.8(1222); SEMCAD X 14.6.10(7331)

Dipole Calibration for Head Tissue/Pin=250 mW, d=10mm/Zoom Scan (7x7x7)/Cube 0:

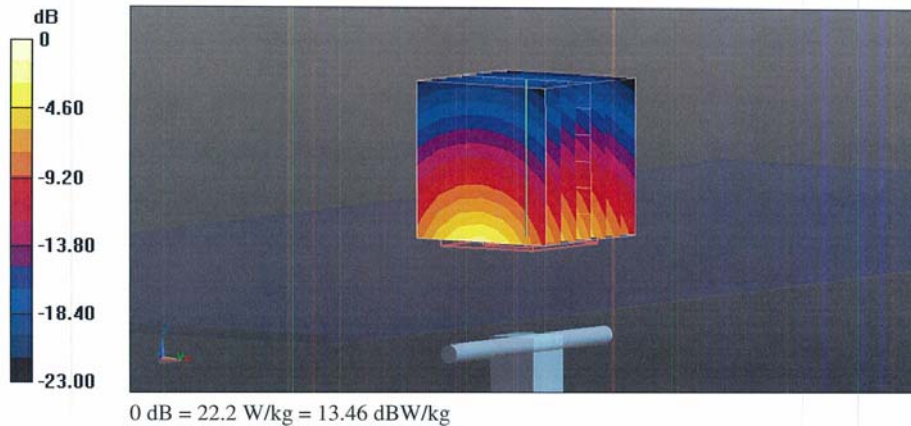
Measurement grid: dx=5mm, dy=5mm, dz=5mm

Reference Value = 114.0 V/m; Power Drift = 0.04 dB

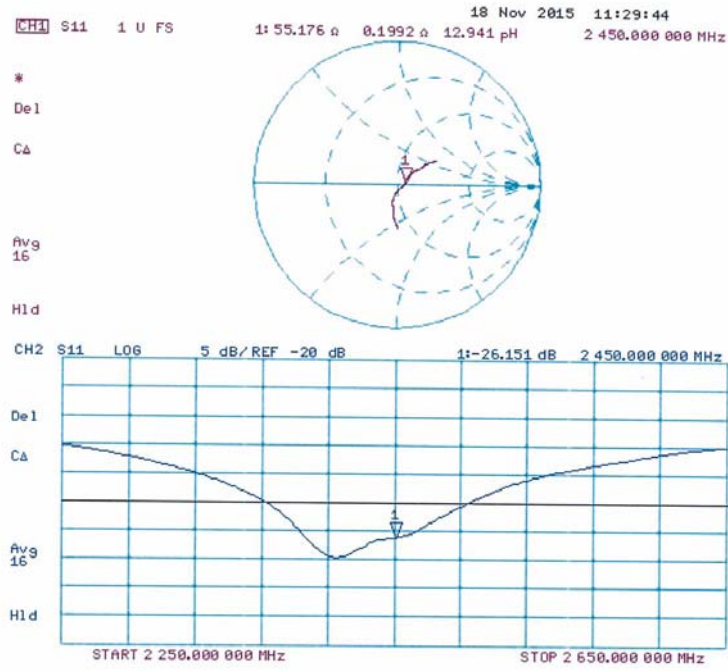
Peak SAR (extrapolated) = 27.7 W/kg

SAR(1 g) = 13.3 W/kg; SAR(10 g) = 6.14 W/kg

Maximum value of SAR (measured) = 22.2 W/kg



Impedance Measurement Plot for Head TSL



DASY5 Validation Report for Body TSL

Date: 18.11.2015

Test Laboratory: SPEAG, Zurich, Switzerland

DUT: Dipole 2450 MHz ; Type: D2450V2; Serial: D2450V2 - SN: 923

Communication System: UID 0 - CW; Frequency: 2450 MHz

Medium parameters used: $f = 2450$ MHz; $\sigma = 2.02$ S/m; $\epsilon_r = 52.7$; $\rho = 1000$ kg/m³

Phantom section: Flat Section

Measurement Standard: DASY5 (IEEE/IEC/ANSI C63.19-2011)

DASY52 Configuration:

- Probe: EX3DV4 - SN7349; ConvF(7.53, 7.53, 7.53); Calibrated: 30.12.2014;
- Sensor-Surface: 1.4mm (Mechanical Surface Detection)
- Electronics: DAE4 Sn601; Calibrated: 17.08.2015
- Phantom: Flat Phantom 5.0 (back); Type: QD000P50AA; Serial: 1002
- DASY52 52.8.8(1222); SEMCAD X 14.6.10(7331)

Dipole Calibration for Body Tissue/Pin=250 mW, d=10mm/Zoom Scan (7x7x7)/Cube 0:

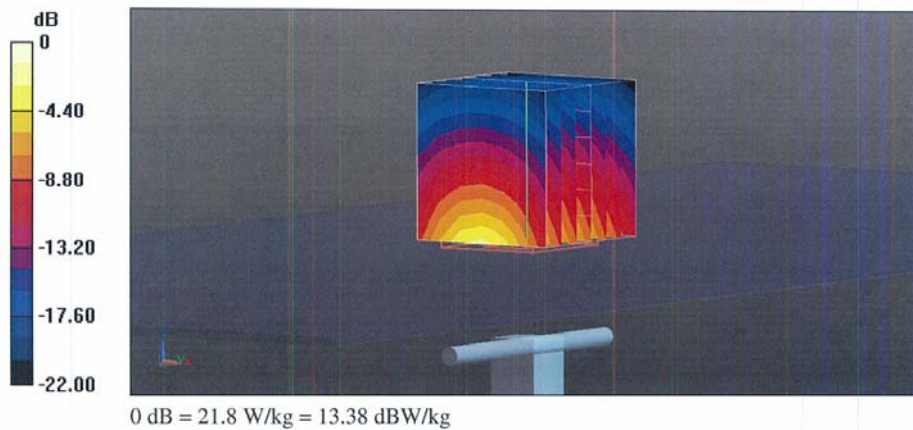
Measurement grid: dx=5mm, dy=5mm, dz=5mm

Reference Value = 108.4 V/m; Power Drift = 0.03 dB

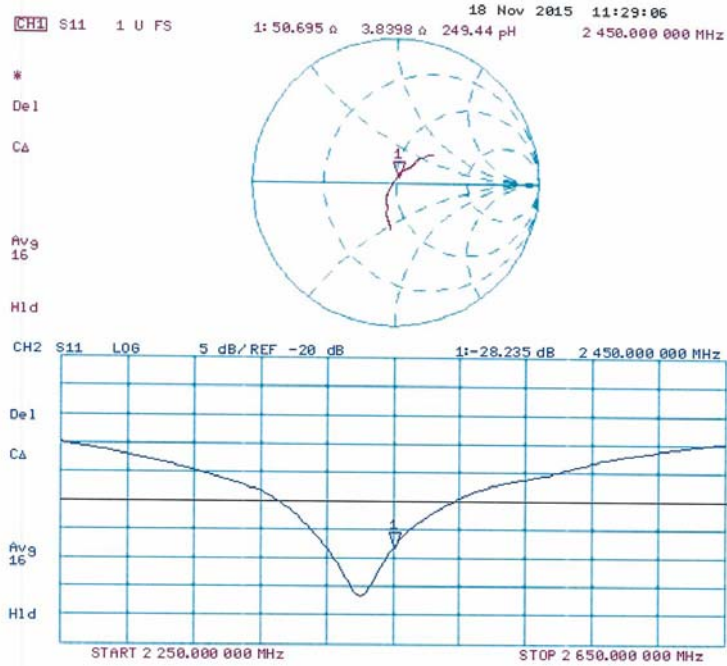
Peak SAR (extrapolated) = 26.6 W/kg

SAR(1 g) = 13.3 W/kg; SAR(10 g) = 6.22 W/kg

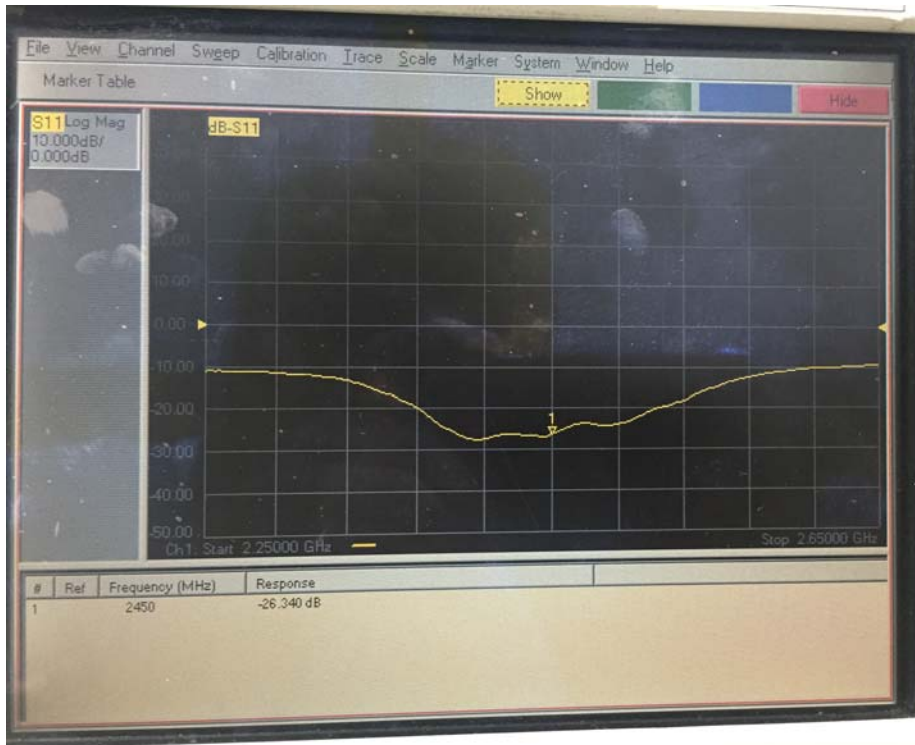
Maximum value of SAR (measured) = 21.8 W/kg



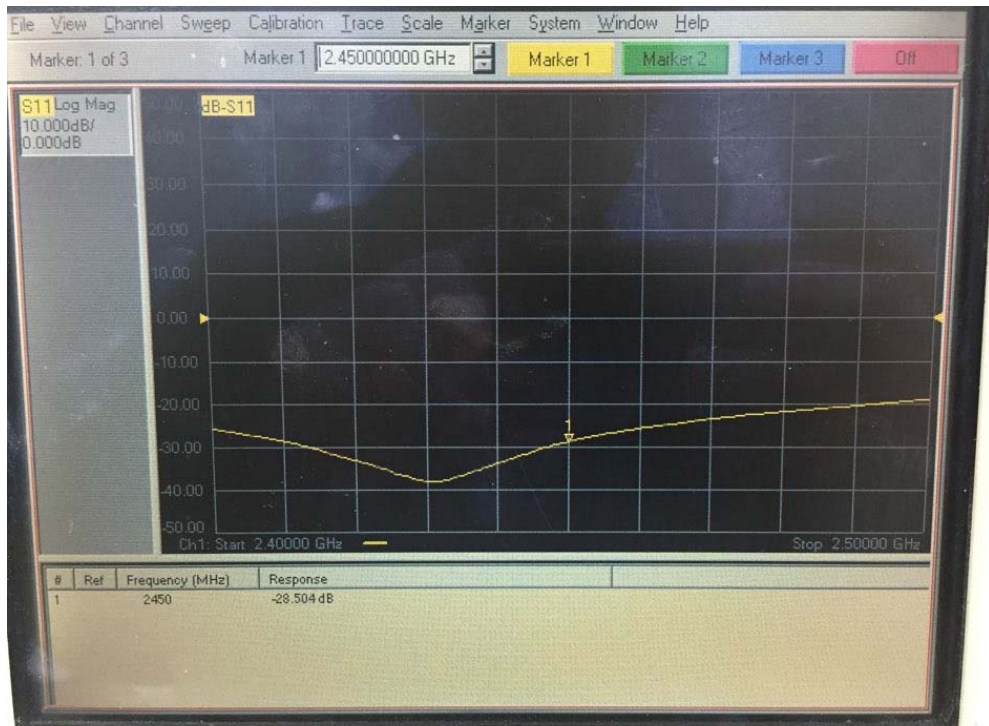
Impedance Measurement Plot for Body TSL



Return Loss for Head simulant tissue (measured on Aug 01, 2017)



Return Loss for Body simulant tissue (measured on Nov 22, 2016)



< Dielectric Probe : DAK-3.5 SN 1140 >

**Calibration Laboratory of
Schmid & Partner
Engineering AG**
Zeughausstrasse 43, 8004 Zurich, Switzerland



S Schweizerischer Kalibrierdienst
C Service suisse d'étalonnage
S Servizio svizzero di taratura
S Swiss Calibration Service

Accredited by the Swiss Accreditation Service (SAS)
The Swiss Accreditation Service is one of the signatories to the EA
Multilateral Agreement for the recognition of calibration certificates

Accreditation No.: SCS 0108

Client **Onetech (Dymstec)**

Certificate No: **OCP-DAK3.5-1140_Nov16**

| CALIBRATION CERTIFICATE | | | |
|--|--|---|------------------------------------|
| Object | DAK-3.5 - SN: 1140 | | |
| Calibration procedure(s) | QA CAL-33.v2 Calibration of dielectric parameter probes | | |
| Calibration date: | November 29, 2016 | | |
| <p>This calibration certificate documents the traceability to national standards, which realize the physical units of measurements (SI). The measurements and the uncertainties with confidence probability are given on the following pages and are part of the certificate.</p> <p>All calibrations have been conducted in the closed laboratory facility: environment temperature (22 ± 3)°C and humidity < 70%.</p> <p>Calibration Equipment used (M&TE critical for calibration)</p> | | | |
| Primary Standards | ID # | Cal Date (Certificate No.) | Scheduled Calibration |
| OCP DAK-3.5 (weighted) | SN: 1249 | 8-Oct-16 (OCP-DAK3.5-1249_Oct16) | Oct-17 |
| Secondary Standards | ID # | Check Date (in house) | Scheduled Check |
| Rohde & Schwarz ZVA50 | T0170 | 9-Jun-16 (in house check Jun-16) | Jun-17 |
| Digital Thermometer DTM3000 | 2148 | 20-May-16 (DTM-2148_May16) | May-17 |
| Methanol 99.9% Type 34860 | STBF2902V | 14-Apr-16 (bottle opened, check Apr-16) | Apr-17 |
| Head Liquid, HSL U12 | 121204-1 | 14-Apr-16 (in house check Apr-16) | Apr-17 |
| 0.1 mol/L NaCl solution Type 35275 | SZBF3280V | 14-Apr-16 (in house check Apr-16) | Apr-17 |
| 0.05 mol/L NaCl solution | 160413-1 | 14-Apr-16 (in house check Apr-16) | Apr-17 |
| Head Gel, SL AGH U08 AB-B | 150430 | 14-Apr-16 (in house check Apr-16) | Apr-17 |
| Solid Substrate | AK9 | 14-Apr-16 (in house check Apr-16) | Apr-17 |
| Calibrated by: | Name Ferenc Muranyi | Function External Expert | Signature <i>Ferenc Muranyi</i> |
| Approved by: | Katja Pokovic | Technical Manager | <i>Katja Pokovic</i> |
| | | | Issued: November 29, 2016 |
| This calibration certificate shall not be reproduced except in full without written approval of the laboratory. | | | |

**Calibration Laboratory of
Schmid & Partner
Engineering AG**
Zeughausstrasse 43, 8004 Zurich, Switzerland



S Schweizerischer Kalibrierdienst
C Service suisse d'étalonnage
S Servizio svizzero di taratura
S Swiss Calibration Service

Accredited by the Swiss Accreditation Service (SAS)
The Swiss Accreditation Service is one of the signatories to the EA
Multilateral Agreement for the recognition of calibration certificates

Accreditation No.: **SCS 0108**

References

- [1] IEEE Std 1528-2013, "IEEE Recommended Practice for Determining the Peak Spatial-Averaged Specific Absorption Rate (SAR) in the Human Head from Wireless Communications Devices: Measurement Techniques", June 2013
- [2] IEC 62209 – 1, "Specific Absorption Rate (SAR) in the frequency range of 300 MHz to 3 GHz – Measurement Procedure, Part 1: Hand-held mobile wireless communication devices", February 2005
- [3] IEC 62209-2 Ed.1, "Human Exposure to Radio Frequency Fields from Handheld and Body-Mounted Wireless Communication Devices – Human models, Instrumentation, and Procedures Part 2: Procedure to determine the specific absorption rate (SAR) for mobile wireless communication devices used in close proximity to the human body (frequency range of 30 MHz to 6 GHz)", March 2010
- [4] A. P. Gregory and R. N. Clarke, "NPL Report MAT 23", January 2012
Tables of the Complex Permittivity of Dielectric Reference Liquids at Frequencies up to 5 GHz
- [5] DAK Professional Handbook, SPEAG, August 2016
- [6] A. Toropainen et al, "Method for accurate measurement of complex permittivity of tissue equivalent liquids", Electronics Letters 36 (1) 2000 pp32-34
- [7] J. Hilland, "Simple sensor system for measuring the dielectric properties of saline solutions", Meas. Sci. Technol. 8 pp901–910 (1997)
- [8] K. Nörtemann, J. Hilland and U. Kaatzte, "Dielectric Properties of Aqueous NaCl Solutions at Microwave Frequencies", J. Phys. Chem. A 101 pp6864-6869 (1997)
- [9] R. Buchner, G. T. Hefter and Peter M. May, "Dielectric Relaxation of Aqueous NaCl Solutions", J. Phys. Chem. A 103 (1) (1999)

Description of the dielectric probe

Dielectric probes are used to measure the dielectric parameters of tissue simulating media in a wide frequency range. The complex permittivity $\epsilon_r^* = (\epsilon'/\epsilon_0) - j(\epsilon''/\epsilon_0)$ is determined from the S parameters measured with a vector network analyzer (VNA) with software specific to the probe type. The parameters of interest e.g. in standards [1, 2, 3] and for other applications are presented and calculated as follows:

(Relative) permittivity ϵ' (real part of $\epsilon_r^* = (\epsilon'/\epsilon_0) - j(\epsilon''/\epsilon_0)$ where $\epsilon_0 = 8.854 \text{ pF/m}$ is the permittivity in free space)

Conductivity $\sigma = 2 \pi f \epsilon'' \epsilon_0$,

Loss Tangent = (ϵ''/ϵ')

The OCP (open ended coaxial) is a cut off section of 50 Ohm transmission line, similar to the system described in [1, 2, 3, 5], used for contact measurement. The material is measured either by touching the probe to the surface of a solid/gelly or by immersing it into a liquid media. The electromagnetic fields at the probe end fringe into the material to be measured, and its parameters are determined from the change of the S_{11} parameters. With larger diameter of the dielectrics, the probe can be used down to lower frequencies.

The flange surrounding the active area shapes the near field similar to a semi-infinite geometry and is inserted fully into the measured lossy liquid.

The probe is connected with a phase and amplitude stable cable to a VNA which is then calibrated with Open, Short and a Liquid with well-known parameters. All parts in the setup influencing the amplitude and phase of the signal are important and shall remain stable.

Handling of the item

Before usage, the active probe area has to be cleaned from any material residuals potentially contaminating the reference standards. The metal and dielectric surface must be protected to keep the precision of the critical mechanical dimensions. The connector and cable quality are critical; any movements between calibration and measurement shall be avoided. The temperature must be stable and must not differ from the material temperature.

Methods Applied and Interpretation of Parameters

The calibration of the dielectric probe system is done in the steps described below for the desired frequency range and calibration package (SAR/MRI liquids, Semi-solid/solid material). Because the standard calibration in step 3 is critical for the results in steps 4 to 8, the sequence 3 to 8 is repeated 3 times. As a result, the result from these 3 sets is represented.

1. Configuration and mechanical / optical status.
2. Measurement resolution is 5 MHz from 10 to 300 MHz, 50 MHz from 300 to 6000 MHz and 250 MHz from 6 to 20 GHz.
3. Standard calibration uses Air / Short / Liquid. 1 liter liquid quantity is used to reduce the influence the reflections. The liquid type is selected depending on the lowest frequency and probe diameter:
 DAK-1.2, DAK-3.5, Agilent OCP: de-ionized water (approx. 22 °C)
 DAK-12: saline solution with static conductivity 1 S/m (approx. 22 °C)
 NPL OCP: pure ethanol (approx. 22 °C)
4. The cable used in the setup stays in a fixed position, i.e. the probe is fixed and measuring from the top in an angle of typ. 20° from the vertical axis. For DAK and Agilent probes, the refresh function (air standard) is used previous to the individual measurements in order to compensate for possible deviations from cable movements. After insertion of the probe into a liquid, the possible air bubbles are removed from the active surface.
5. Measurement of multiple shorts if not already available from the calibration in the previous step (NPL). Evaluation of the deviation from the previous calibration short with graphical representation of the complex quantities and magnitude over the frequency range. Probe specific short is used. This assessment shows ability to define a short circuit at the end of the probe for the VNA calibration in the setup which is essential at high frequencies and depends on the probe surface quality.
6. Measurement of validation liquids in a quantity of 1 liter at well defined temperature. Evaluation of the deviations from the target. The targets base on traceable data from reference sources. The deviation of the measurement is graphically presented for permittivity and conductivity (for lossy liquids) or loss tangent (for low losses at low frequencies).
7. Measurement of lossy liquids in a quantity of 1 liter at well defined temperature. Head tissue simulating liquid or saline solution with 0.5 S/m static conductivity are representative. The target data base on traceable data from reference sources or from multiple measurements with precision reference probes or different evaluations such as transmission line or slotted line methods. Evaluation of the deviation from the target and graphical representation for permittivity and conductivity over the frequency range
8. Semi-solid / solid material calibration:
 Measurements of an elastic lossy broadband semi-solid gel with parameters close to the head tissue target. Measurements of a planar very low loss solid microwave-substrate. The average of 4 measurements of the same sample at different location is shown as a single result. The deviation of the permittivity and conductivity from the reference data is evaluated.
 Measurements of a planar very low loss solid microwave-substrate. The average of 4 measurements of the same sample at different location is shown as a single result. The relative deviation of the permittivity and the absolute deviation of the loss tangent is evaluated.
 The targets base on multiple measurements (on the same material batch at identical temperature) on convex and planar surfaces with precision reference OCP.

- The measurement on semi-solid / solid materials is sensitive to the quality and planarity of the probe contact area, such as air gaps due to imperfect probes (resulting lower permittivity values).
9. Table for the probe uncertainty: The uncertainty of the probe depending on probe type, size, material parameter range and frequency is given in a table. It represents the best measurement capability of the specific probe but does not include the material (deviation from the target values).
 10. Appendix with detailed results of all measurements with the uncertainties for the specific measurement. In addition to the probe uncertainty (see above), it includes the uncertainty of the reference material used for the measurement. A set of results from independent calibrations represents the capability of the setup and the lossy materials used, including the precision of the measured material and the influence of temperature deviations. Temperature and operator influence was minimized and gives a good indication of the achievable repeatability of a measurement.
 11. Summary assessment of the measured deviations and detailed comments if not typical for the probe type.

Dielectric probe identification and configuration data

Item description

| | |
|------------------|---|
| Probe type | OCP Open-ended coaxial probe |
| Probe name | SPEAG Dielectric Assessment Kit DAK-3.5 |
| Type No | SM DAK 040 CA |
| Serial No | 1140 |
| Description | Open-ended coaxial probe with flange Flange diameter: 19.0 mm Dielectric diameter: 3.5 mm Material: stainless steel |
| Connector 1 | PC 3.5 pos. |
| Software version | DAK Measurement Solver 2.4.0.679 Calibration Type: Air / short / water (set to measured water temp.) Probe type: "DAK3.5" (software setting) |
| Further settings | VNA bandwidth setting: 50 Hz |

SCS 0108 Accessories used for customer probe calibration

| | |
|-------|---|
| Cable | Huber & Suhner Sucoflex 404, SN: 4361, length 1 m, PC3.5 neg. – PC3.5 neg. |
| Short | DAK-3.5 shorting block, type SM DAK 200 BA Contact area covered with cleaned Cu stripe |

Additional items used during measurements

| | |
|-----------|--------------------------------------|
| Adapter 1 | PC3.5 pos. – PC2.4 (VNA side) |
| Adapter 2 | PC3.5 pos. – PC3.5 neg. (probe side) |

Notes

- Before the calibration, the connectors of the probe and cable were inspected and cleaned.
- Probe visual inspection: according to requirements
- Short inspection: according to the requirements

Probe Uncertainty

The following tables provide material and frequency specific uncertainties (k=2) for the dielectric probe. The values in the tables represent the measurement capability for the probe when measuring a material in the indicated parameter range. They include all uncertainties of

- probe system
- possible systematic errors due to the design
- calibration
- temperature differences during the calibration and measurements, as described,
- VNA noise

Apart from the material used for the calibration (de-ionized water), material uncertainties of the reference materials used during the measurement in Appendix A are not included in these tables.

| DAK-3.5 | | | | |
|--------------------------|--|------------------|----------------------|------------|
| Permittivity range | | Frequency range | (sigma / LT range) | Unc. (k=2) |
| 1 – 15 | | 10 MHz - 20 MHz | | --- |
| | | 20 MHz - 200 MHz | | --- |
| | | 200 MHz - 3 GHz | LT < 0.1 | 2.4% |
| | | 3 GHz - 6 GHz | LT < 0.1 | 2.0% |
| | | 6 GHz - 20 GHz | LT < 0.1 | 2.1% |
| 10 – 40 | | 10 MHz - 20 MHz | | --- |
| | | 20 MHz - 200 MHz | | --- |
| | | 200 MHz - 3 GHz | sigma : 1 – 10 S/m | 1.9% |
| | | 3 GHz - 6 GHz | sigma : 1 – 10 S/m | 2.3% |
| | | 6 GHz - 20 GHz | sigma > 10 S/m | 3.5% |
| 35 – 100 | | 10 MHz - 20 MHz | | --- |
| | | 20 MHz - 200 MHz | | --- |
| | | 200 MHz - 3 GHz | sigma : 1 – 10 S/m | 1.8% |
| | | 3 GHz - 6 GHz | sigma : 1 – 10 S/m | 1.9% |
| | | 6 GHz - 20 GHz | sigma > 10 S/m | 2.4% |
| Conductivity range (S/m) | | Frequency range | (epsilon / LT range) | Unc. (k=2) |
| 1 – 10 | | 10 MHz - 20 MHz | | --- |
| | | 20 MHz - 200 MHz | | --- |
| | | 200 MHz - 3 GHz | eps : 35 - 100 | 2.7% |
| | | 3 GHz - 6 GHz | eps : 35 - 100 | 3.0% |
| | | 6 GHz - 20 GHz | eps : 10 - 40 | 3.0% |
| Loss tangent range | | Frequency range | (epsilon / LT range) | Unc. (k=2) |
| < 0.1 | | 10 MHz - 20 MHz | | --- |
| | | 20 MHz - 200 MHz | | --- |
| | | 200 MHz - 3 GHz | eps : 1 - 15 | 0.03 |
| | | 3 GHz - 6 GHz | eps : 1 - 15 | 0.03 |
| | | 6 GHz - 20 GHz | eps : 1 - 15 | 0.03 |

Calibration Results

Uncertainty limits ($k=2$) for the material measurements in the figures of Appendix A are represented with red dashed lines. These uncertainties contain - in addition to probe uncertainty - the uncertainty of the material target parameter determination.

The measurements show the results obtained from independent calibrations for the same material. The differences between the individual measurement curves give therefore an indication for the obtainable repeatability and shall lie within the uncertainties stated in the tables.

Materials for DAK-3.5 calibration:

Appendix A with curves for Methanol, HSL, and 0.05 mol/L NaCl solution (200 MHz - 6 GHz, optional 20 GHz), HS gel and low loss solid substrate are optional.

Appendix A: Detailed Results (additional assessments outside the scope of SCS0108)

A.1 Probe appearance and calibration sequence

A.1.1 Appearance

The OCP appearance is fully according to the expectations:

- the flange surface is intact

A.1.2 Calibration sequence

The following sequence was repeated 3 times in the low frequency range from 200 – 300 MHz in 5 MHz steps and in the high frequency range from 300 to 6000 MHz in 50 MHz steps, and from 6 GHz to 20 GHz in 250 MHz steps.

- Air
- Short 1 short, then immediate verification with a second short (with eventual repetition)
- Water De-ionized water, temperature measured and set in the software (for DAK-12 0.1 mol/L saline solution, temperature measured and set in the software)
- Methanol Pure methanol, temperature measured and set in the software
- Liquids Measurement of further liquids (e.g. Head tissue simulating liquid and 0.05 mol/l saline)
- Cleaning Probe washed with water and isopropanol at the end of the sequence.
- Shorts 4 additional separate short measurements to determine the deviation from the original
- Refresh Refresh with Air
- Solid 4 separate solid low loss planar substrate measurements to determine one average (optional)
- Semisolid 4 separate head gel measurements on fresh intact surface to determine one average (optional)
- Cleaning Probe washed with water and isopropanol at the end of the sequence

Evaluation of the additional shorts from the calibrated (ideal) short point at the left edge of the Smith Chart, represented as magnitude over the frequency range (fig. 2.1.x) and in polar representation (fig. 2.2.x).

Evaluation of the Liquid measurements and representation of the permittivity and conductivity deviation from their reference data at the measurement temperature. The results of each of the 3 calibrations is shown in the appendix for each material (fig. 3ff) in black, red, blue. The red dashed line shows the uncertainty of the reference material parameter determination.

Evaluation of the Semisolid measurements (optional) by representing the 3 average deviations (each resulting from the 4 separate measurements per set), equivalent to the liquid measurement. Representation of the permittivity and conductivity deviation from their reference data at the nominal temperature.

Evaluation of the Solid measurements (optional) by representing the 3 average deviations (each resulting from the 4 separate measurements per set), equivalent to the liquid measurement. Representation of the permittivity deviation from their reference data and the loss tangent at the nominal temperature.

A.2 Short residual magnitudes

After each of the 3 calibrations with a single short (as per the DAK software), 4 additional separate, short measurements were performed after the liquid measurements and evaluated from the S11 data. The residuals in the graphs represent the deviation from the ideal short point on the polar representation on the VNA screen.

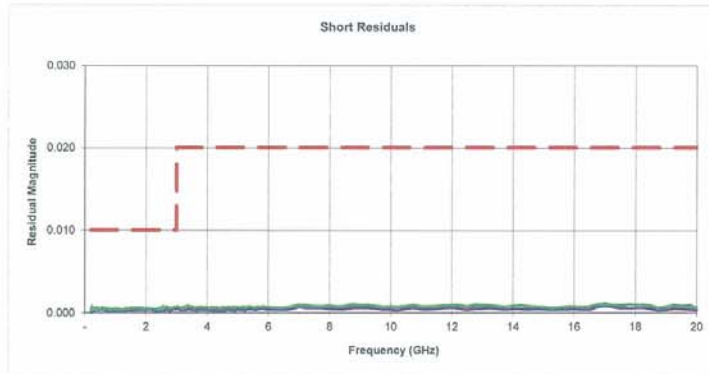


Fig. 2.1a Magnitude of the residual of the shorts, 200 MHz – 20 GHz, after calibration a)

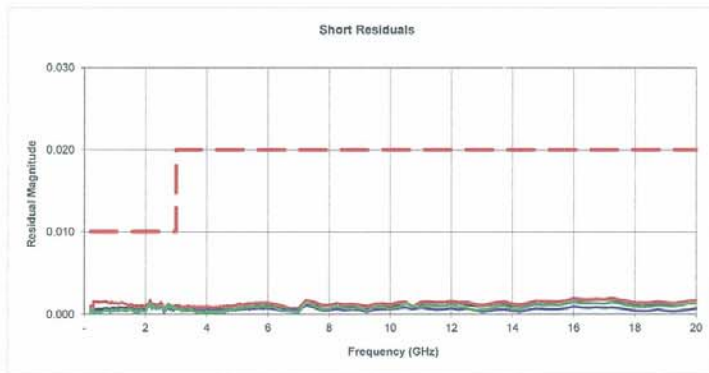


Fig. 2.1b Magnitude of the residual of the shorts, 200 MHz – 20 GHz, after calibration b)

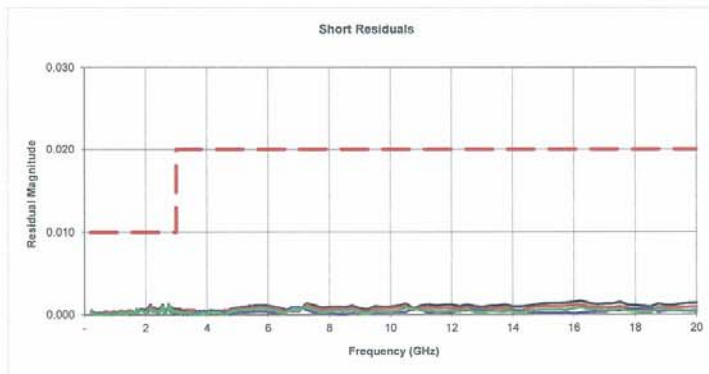


Fig. 2.1c Magnitude of the residual of the shorts, 200 MHz – 20 GHz, after calibration c)

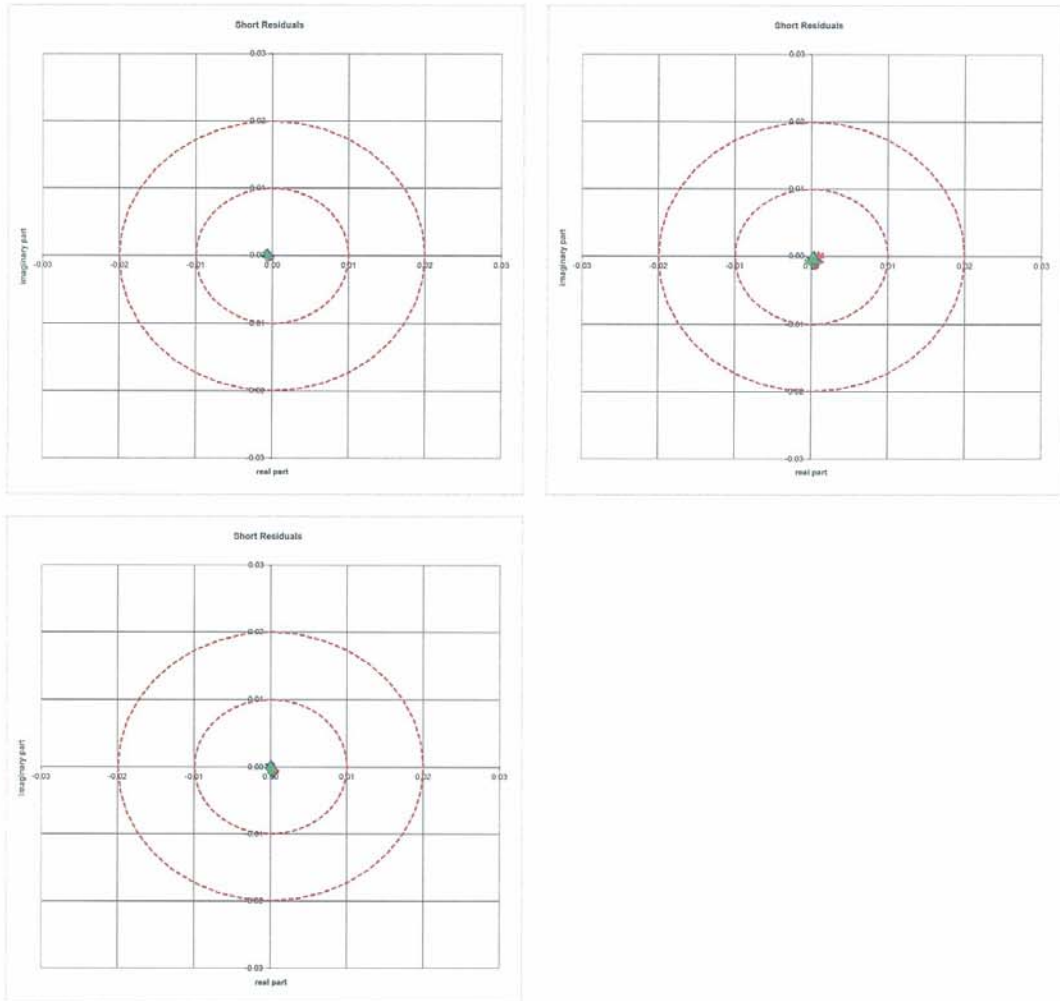


Fig. 2.2a-c Complex representation of the residuals of the shorts, 200 MHz - 20 GHz, after calibrations a)-b) in the top and c) in the bottom

All shorts have good quality. Some minor deviations might be visible from contact quality (left - right).

A.3 Methanol

Methanol (99.9% pure) was measured at a temperature of 22 +/- 2 °C. The liquid temperature was stabilized within 0.05 °C of the desired temperature. Deviations are presented relative to the nominal material parameters at this temperature, calculated from NPL data for this temperature.

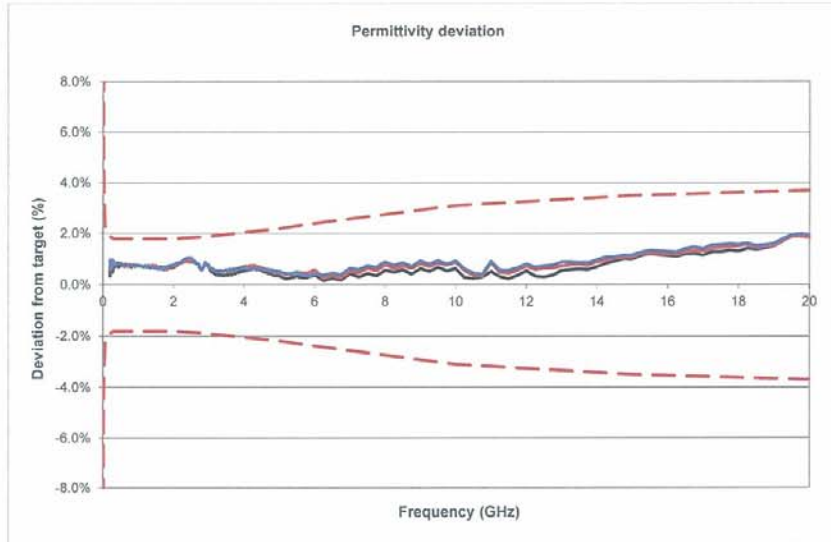


Fig. 3.1 Methanol permittivity deviation from target, 200 MHz – 20 GHz

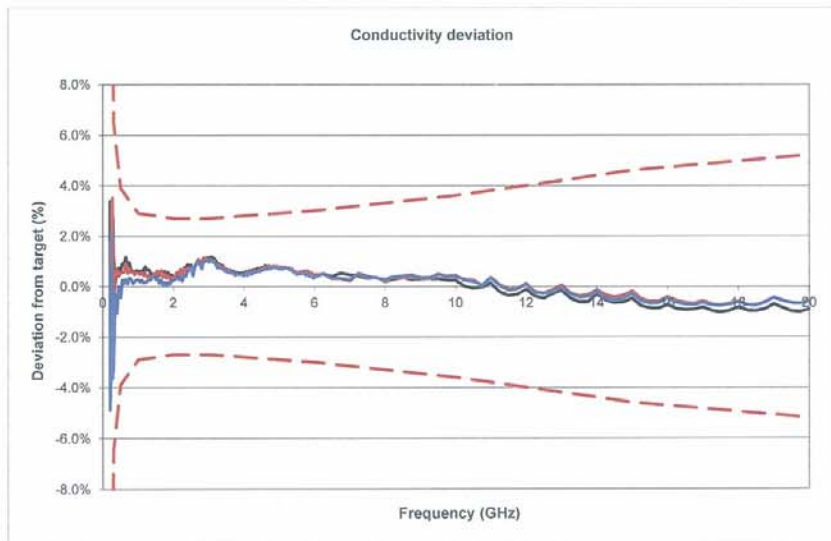


Fig. 3.2 Methanol conductivity deviation from target, 200 MHz – 20 GHz

Conductivity error can be high at low frequencies due to the low absolute conductivity values.

A.4 Head Tissue

Broadband head simulating liquid was measured at a temperature of 22 +/- 2 °C. The liquid temperature was stabilized within 0.05 °C of the desired temperature. Deviations are presented relative to the reference data for this material. Those parameters have been evaluated from multiple measurements on the used bath with precision reference OCP and further methods.

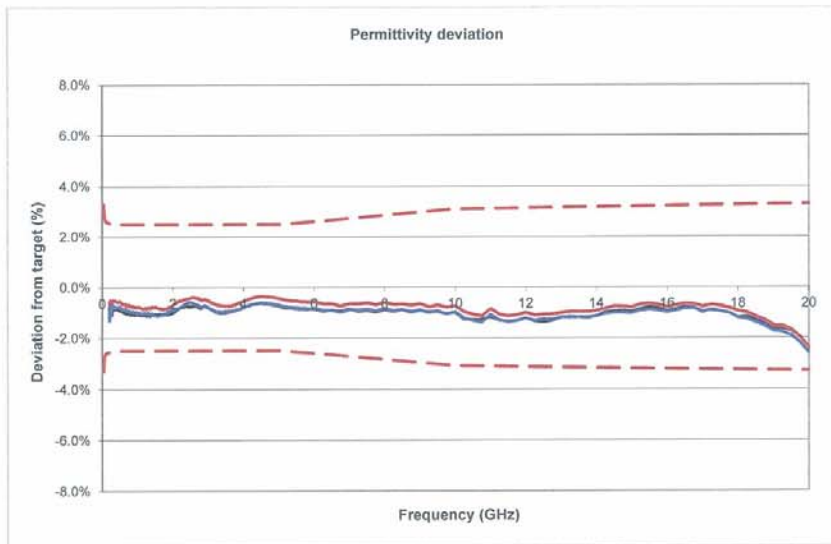


Fig. 4.1 HSL permittivity deviation from target, 200 MHz – 20 GHz

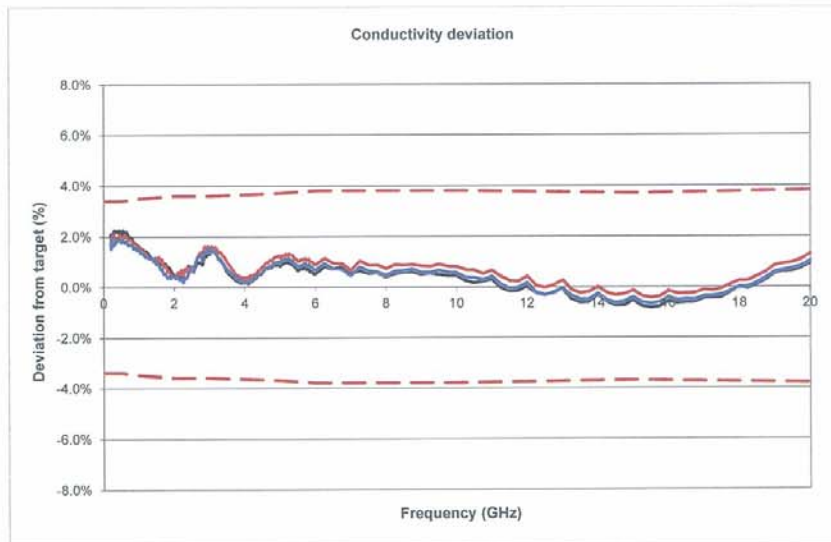


Fig. 4.2 HSL conductivity deviation from target, 200 MHz – 20 GHz

A.5 0.05 mol/L NaCl solution

0.05 mol/L NaCl / water solution has a static conductivity of 0.5 S/m, similar to MRI HCL (High Conductivity Liquid). It was measured at a temperature of 22 +/- 2 °C. The liquid temperature was stabilized within 0.05 °C of the desired temperature. Deviations are presented relative to the reference data for this material. These parameters have been derived from the theoretical model according to [7], matched to the measurements from reference probes and other sources. A quantity of 1 liter was used for the measurement.

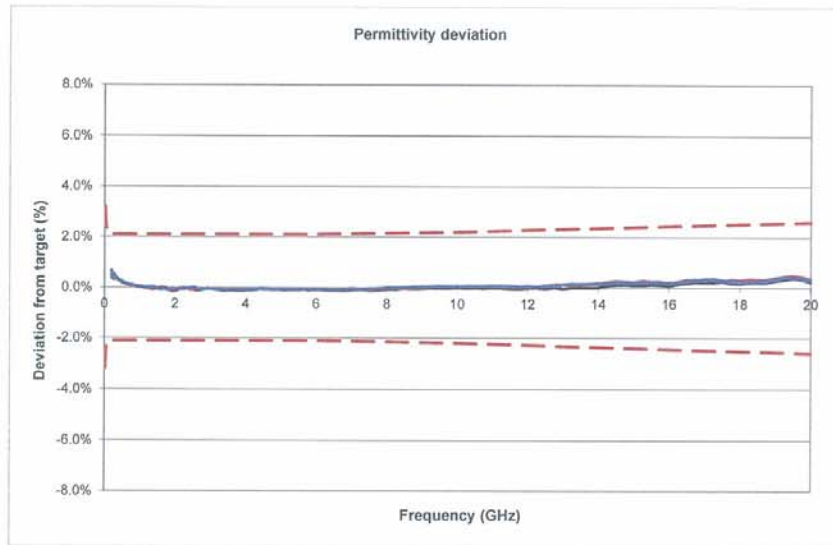


Fig. 5.1 0.05 mol/L solution permittivity deviation from target, 200 MHz – 20 GHz

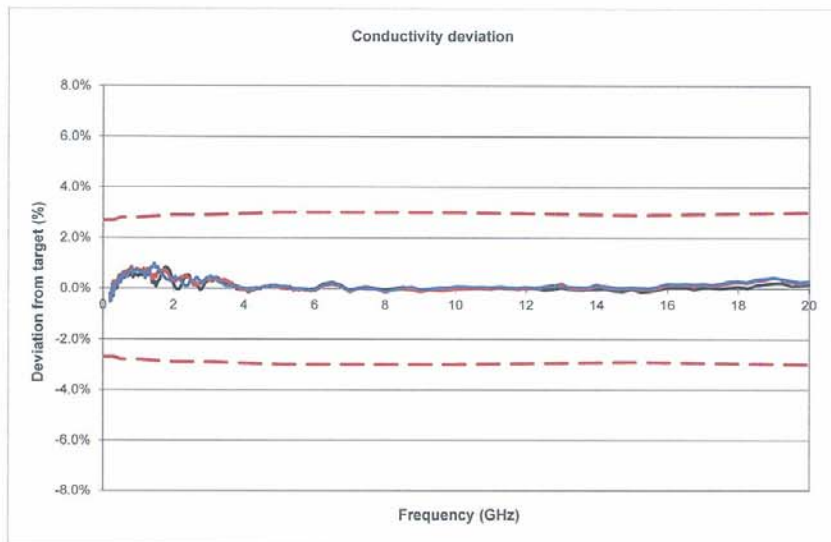


Fig. 5.2 0.05 mol/L solution conductivity deviation from target, 200 MHz – 20 GHz

Appendix B: Nominal parameters of reference materials used for calibration (additional assessments outside the scope of SCS0108)

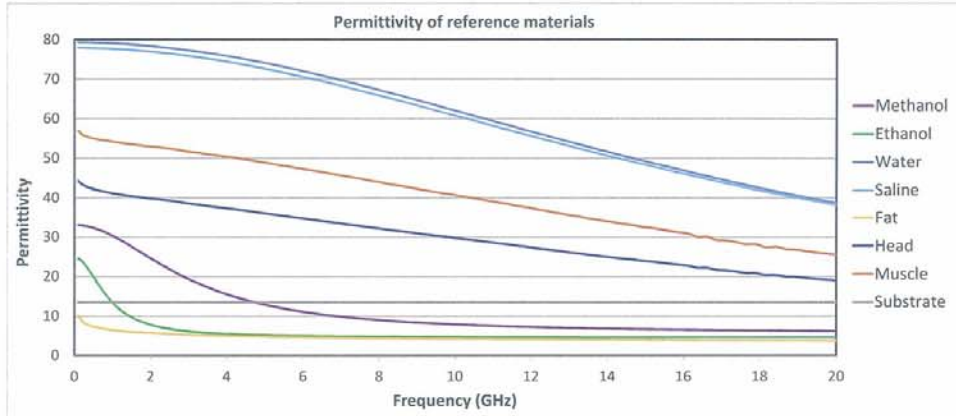


Fig. B.1 Permittivity of reference materials

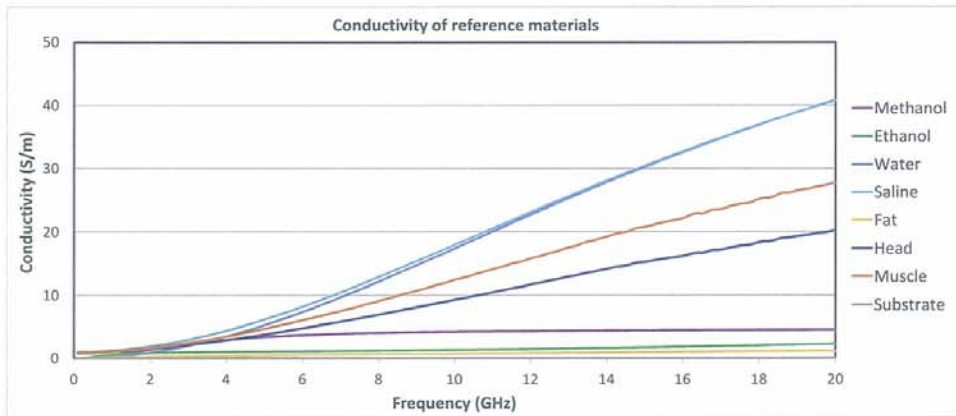


Fig. B.2 Conductivity of reference materials

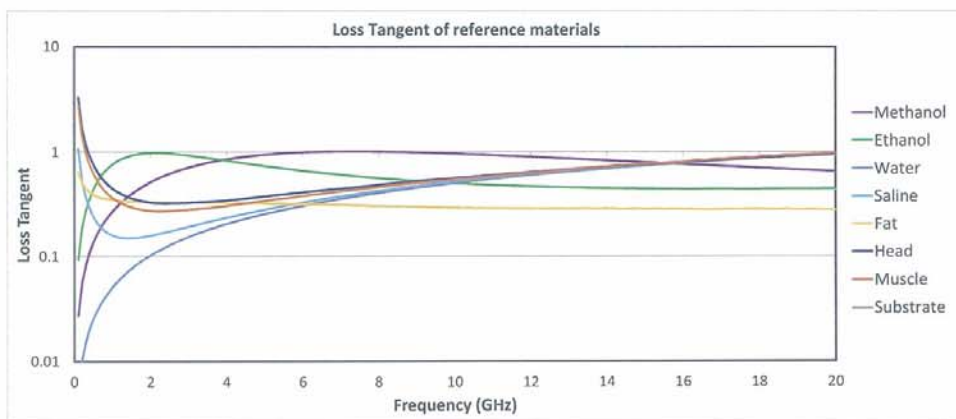


Fig. B.3 Loss tangent of reference materials